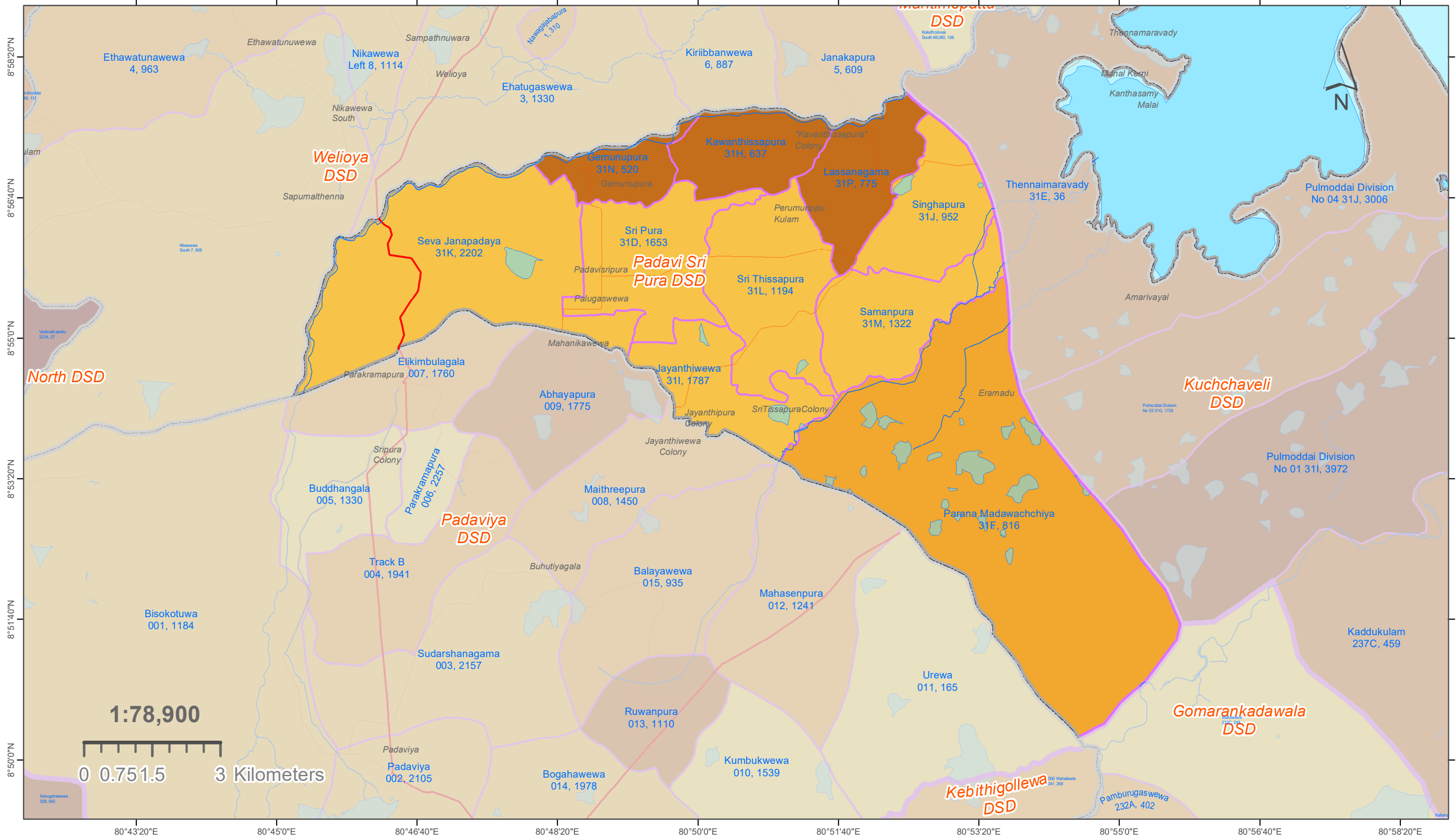


MAP 5303 A: GN DIVISIONS OF PADAVI SRI PURA DS DIVISION, TRINCOMALEE DISTRICT. (192) OVERLAYED WITH DEPENDANCY RATIO - 2012 (Percentage of Age less than 15 & over 60 Population)



Legend

	District Boundaries
	DSD Boundaries
	0.0 - 29.3
	29.4 - 52.5
	52.6 - 59.9
	60.0 - 66.5
	66.6 - 74.8
	74.9 - 92.7
	92.8 - 158.9

	Expressways
	Main Roads
	Secondary Roads
	Tertiary Roads

Water Areas

	Water Areas
	Streams / Rivers

****Dependency Ratio =**
(Persons Aged below 15 years
and above 59 years /
Persons Aged 15 to 59 years) * 100

Label Descriptions:

GN Div. Name
GND Num., Population

Place Names

Daranagama

Ex: Siyambalape South
274A, 6127



Note:
Used 2011/12 data-sets of Administrative Division (District / DSD / GND) Boundaries and Population data sets of Department of Census & Statistics.

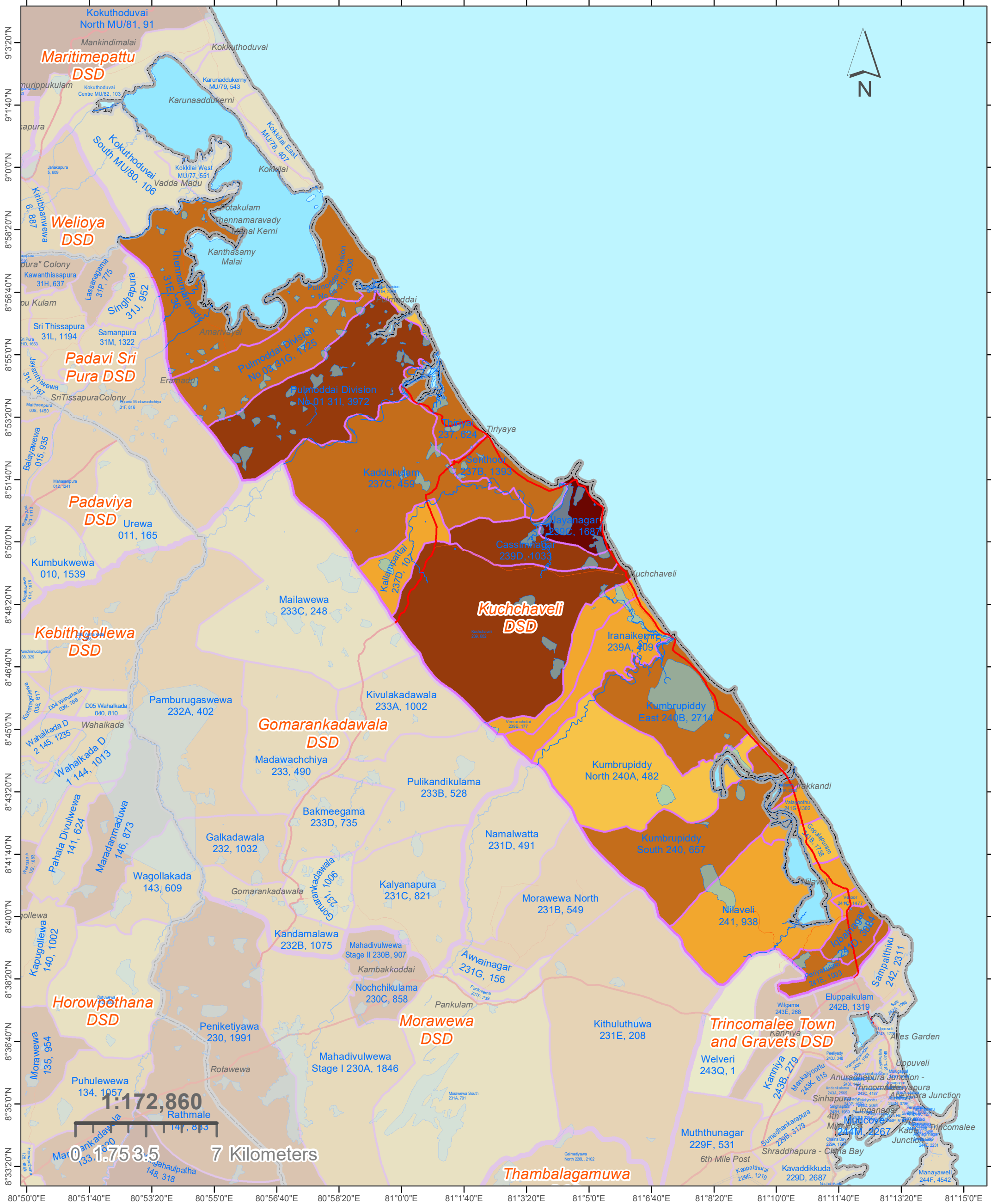
Used 2020 Open Street Map Layers used for Feature Layers (Roads / Places / Water Bodies / Streams).

Software Used: Arc Map of Esri Organisation.

Prepared by the Cartography Division of Department of Census & Statistics.

MAP 5306 A: GN DIVISIONS OF KUCHCHAVELI DS DIVISION, TRINCOMALEE DISTRICT. (193)

OVERLAYED WITH DEPENDANCY RATIO - 2012 (Percentage of Age less than 15 & over 60 Population)



	District Boundaries		Water Areas		52.6 - 59.9
	DSD Boundaries		Streams / Rivers		60.0 - 66.5
	Expressways	GND - Dependency Ratio**			66.6 - 74.8
	Main Roads		0.0 - 29.3		74.9 - 92.7
	Secondary Roads		29.4 - 52.5		92.8 - 158.9
	Tertiary Roads	**Dependency Ratio = (Persons Aged below 15 years and above 59 years / Persons Aged 15 to 59 years) * 100			

Label Descriptions:

GN Div. Name *Place Names*
GND Num., Population

Ex: *Siyambalape South* *Daranagama*
 274A, 6127

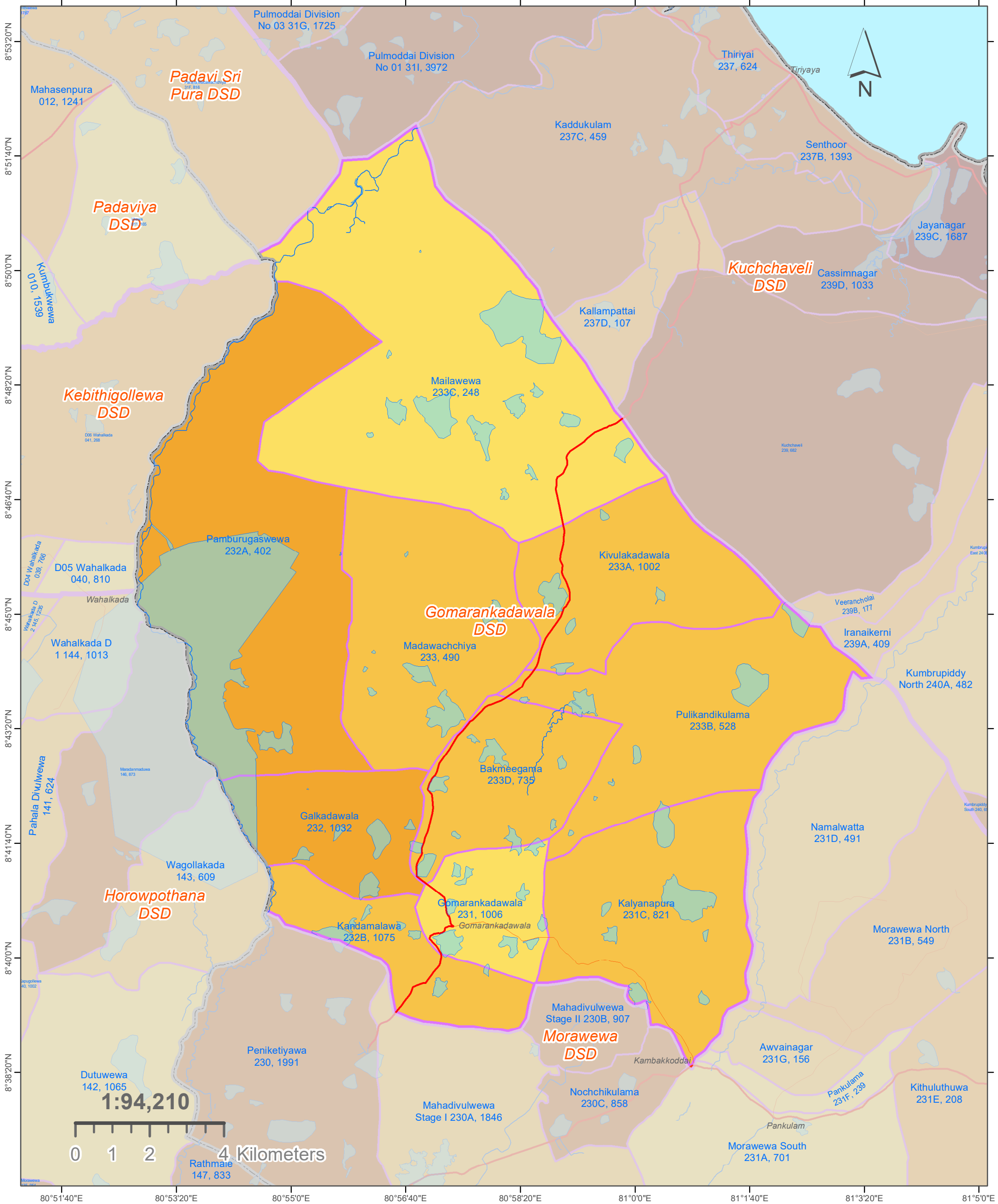
Note:
 Used 2011/12 data-sets of Administrative Division (District / DSD / GND) Boundaries and Population data sets of Department of Census & Statistics.

Used 2020 Open Street Map Layers used for Feature Layers (Roads / Places / Water Bodies / Streams).

Software Used: Arc Map of Esri Organisation.

Prepared by the Cartography Division of Department of Census & Statistics.

MAP 5309 A: GN DIVISIONS OF GOMARANKADAWALA DS DIVISION, TRINCOMALEE DISTRICT. (194)
OVERLAYED WITH DEPENDANCY RATIO - 2012 (Percentage of Age less than 15 & over 60 Population)



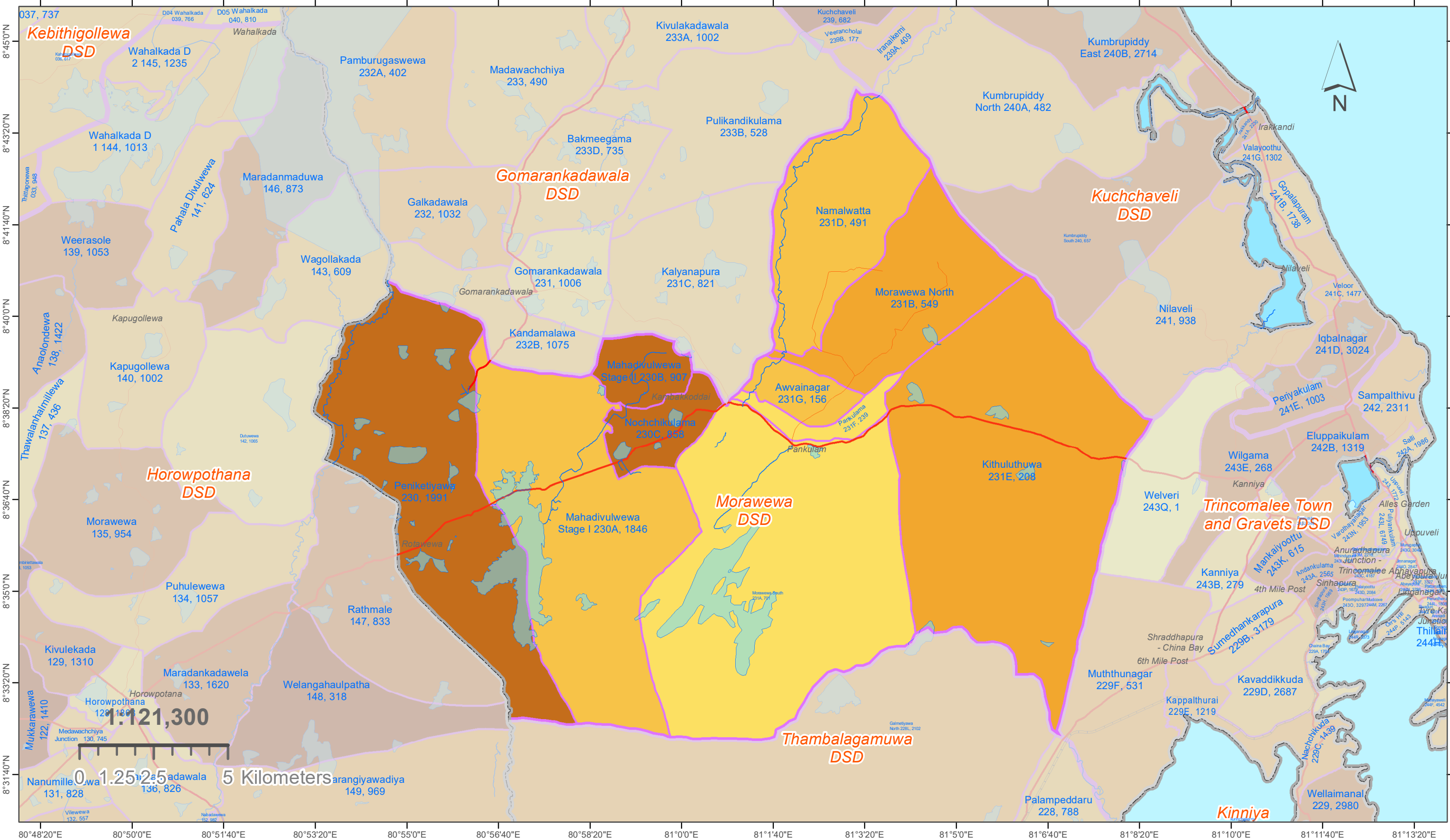
District Boundaries	Water Areas	52.6 - 59.9	Label Descriptions: GN Div. Name GND Num., Population
DSD Boundaries	Streams / Rivers	60.0 - 66.5	
Expressways	GND - Dependency Ratio**	66.6 - 74.8	Place Names
Main Roads		74.9 - 92.7	
Secondary Roads	0.0 - 29.3	92.8 - 158.9	Daraganama
Tertiary Roads	29.4 - 52.5		

**Dependency Ratio = $\frac{\text{Persons Aged below 15 years and above 59 years}}{\text{Persons Aged 15 to 59 years}} * 100$

1:94,210
0 1 2 4 Kilometers

Note:
Used 2011/12 data-sets of Administrative Division (District / DSD / GND) Boundaries and Population data sets of Department of Census & Statistics.
Used 2020 Open Street Map Layers used for Feature Layers (Roads / Places / Water Bodies / Streams).
Software Used: Arc Map of Esri Organisation.
Prepared by the Cartography Division of Department of Census & Statistics.

MAP 5312 A: GN DIVISIONS OF MORAWEWA DS DIVISION, TRINCOMALEE DISTRICT. (195) OVERLAYED WITH DEPENDANCY RATIO - 2012 (Percentage of Age less than 15 & over 60 Population)



Legend

	District Boundaries
	DSD Boundaries
	0.0 - 29.3
	29.4 - 52.5

	52.6 - 59.9
	60.0 - 66.5
	66.6 - 74.8
	74.9 - 92.7
	92.8 - 158.9

	Expressways
	Main Roads
	Secondary Roads
	Tertiary Roads
	Water Areas
	Streams / Rivers

Label Descriptions:

GN Div. Name
GND Num., Population

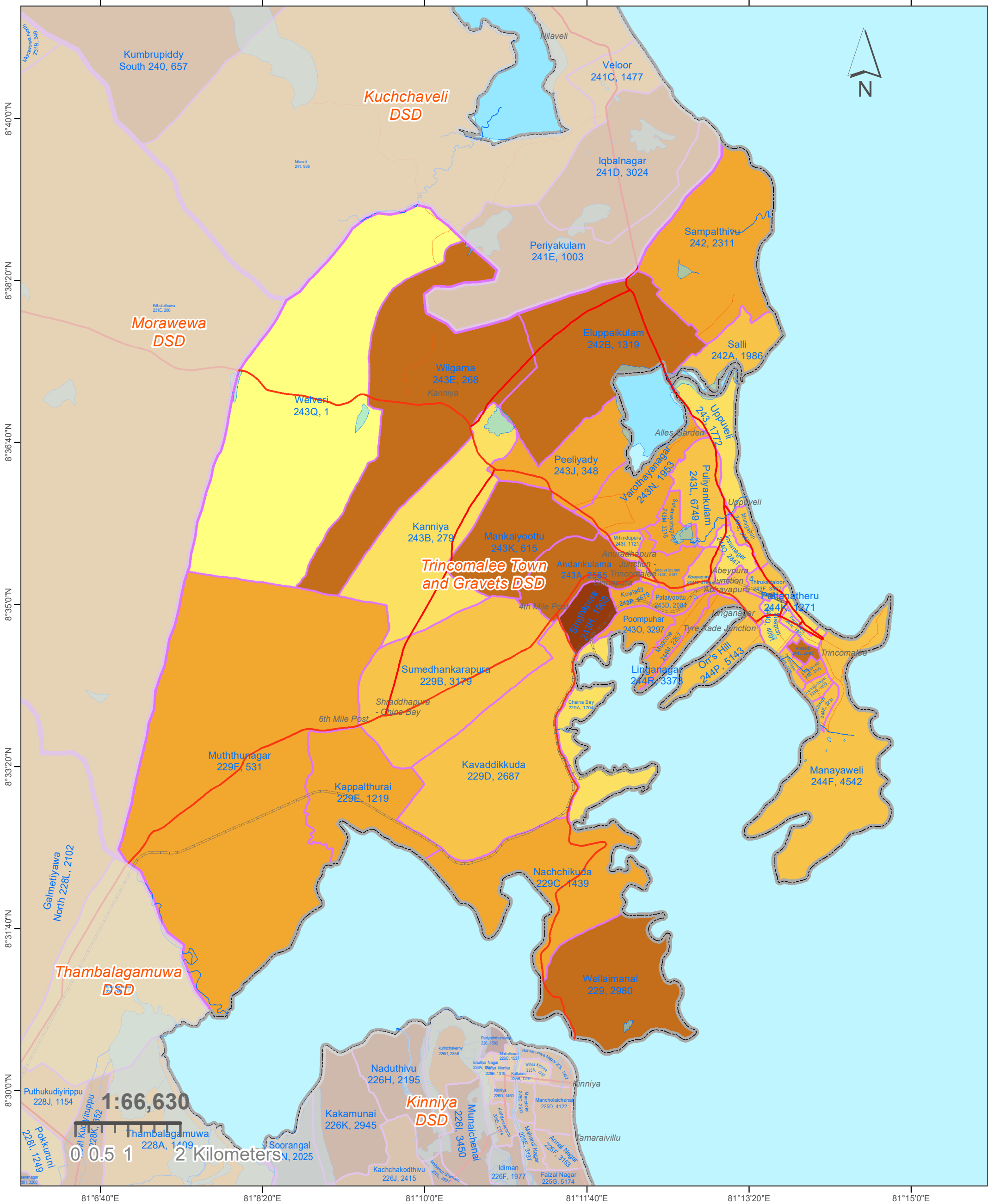
Ex: Siyambalape South
274A, 6127

Place Names
Daranagama



Note:
Used 2011/12 data-sets of Administrative Division (District / DSD / GND) Boundaries and Population data sets of Department of Census & Statistics.
Used 2020 Open Street Map Layers used for Feature Layers (Roads / Places / Water Bodies / Streams).
Software Used: Arc Map of Esri Organisation.
Prepared by the Cartography Division of Department of Census & Statistics.

MAP 5315 A: GN DIVISIONS OF TRINCOMALEE TOWN AND GRAVETS DS DIVISION, TRINCOMALEE DISTRICT. (19)
OVERLAYED WITH DEPENDANCY RATIO - 2012 (Percentage of Age less than 15 & over 60 Population)

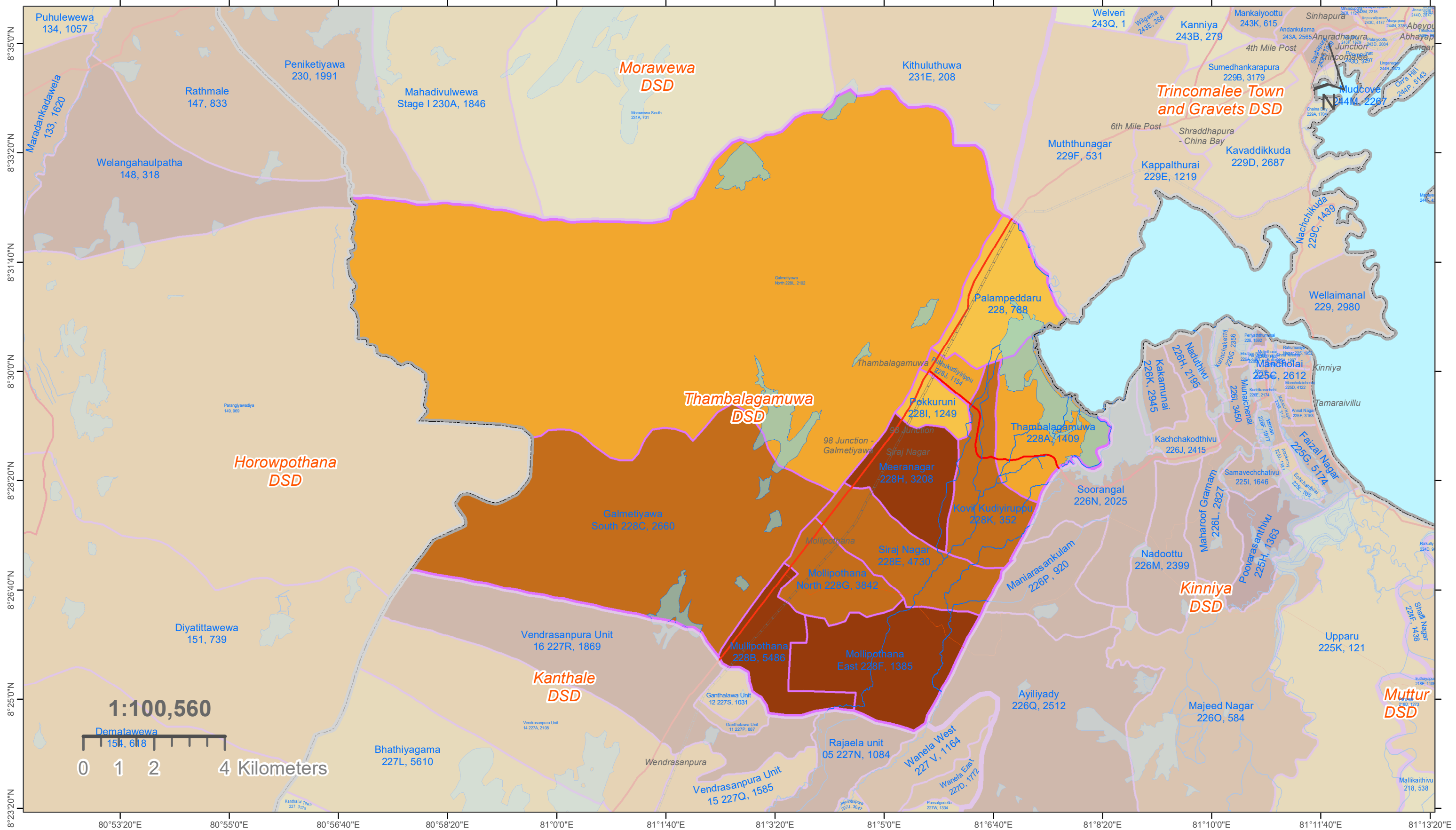


	District Boundaries		Water Areas		52.6 - 59.9
	DSD Boundaries		Streams / Rivers		60.0 - 66.5
	Expressways	GND - Dependency Ratio**			66.6 - 74.8
	Main Roads		0.0 - 29.3		74.9 - 92.7
	Secondary Roads		29.4 - 52.5		92.8 - 158.9
	Tertiary Roads	**Dependency Ratio = (Persons Aged below 15 years and above 59 years / Persons Aged 15 to 59 years) * 100			

Label Descriptions:	
<i>GN Div. Name</i>	Place Names
<i>GND Num., Population</i>	
Ex: Siyambalape South	Daranagama
274A, 6127	

Note:
 Used 2011/12 data-sets of Administrative Division (District / DSD / GND) Boundaries and Population data sets of Department of Census & Statistics.
 Used 2020 Open Street Map Layers used for Feature Layers (Roads / Places / Water Bodies / Streams).
 Software Used: Arc Map of Esri Organisation.
 Prepared by the Cartography Division of Department of Census & Statistics.

MAP 5318 A: GN DIVISIONS OF THAMBALAGAMUWA DS DIVISION, TRINCOMALEE DISTRICT. (197) OVERLAYED WITH DEPENDANCY RATIO - 2012 (Percentage of Age less than 15 & over 60 Population)



Legend

	District Boundaries		52.6 - 59.9		Expressways		Water Areas
	DSD Boundaries		60.0 - 66.5		Main Roads		Streams / Rivers
GND - Dependency Ratio**			66.6 - 74.8		Secondary Roads		
	0.0 - 29.3		74.9 - 92.7		Tertiary Roads		
	29.4 - 52.5		92.8 - 158.9				

****Dependency Ratio =**
(Persons Aged below 15 years
and above 59 years /
Persons Aged 15 to 59 years) * 100

Label Descriptions:

GN Div. Name
GND Num., Population *Place Names*

Ex: *Siyambalape South*
274A, 6127 *Daranagama*



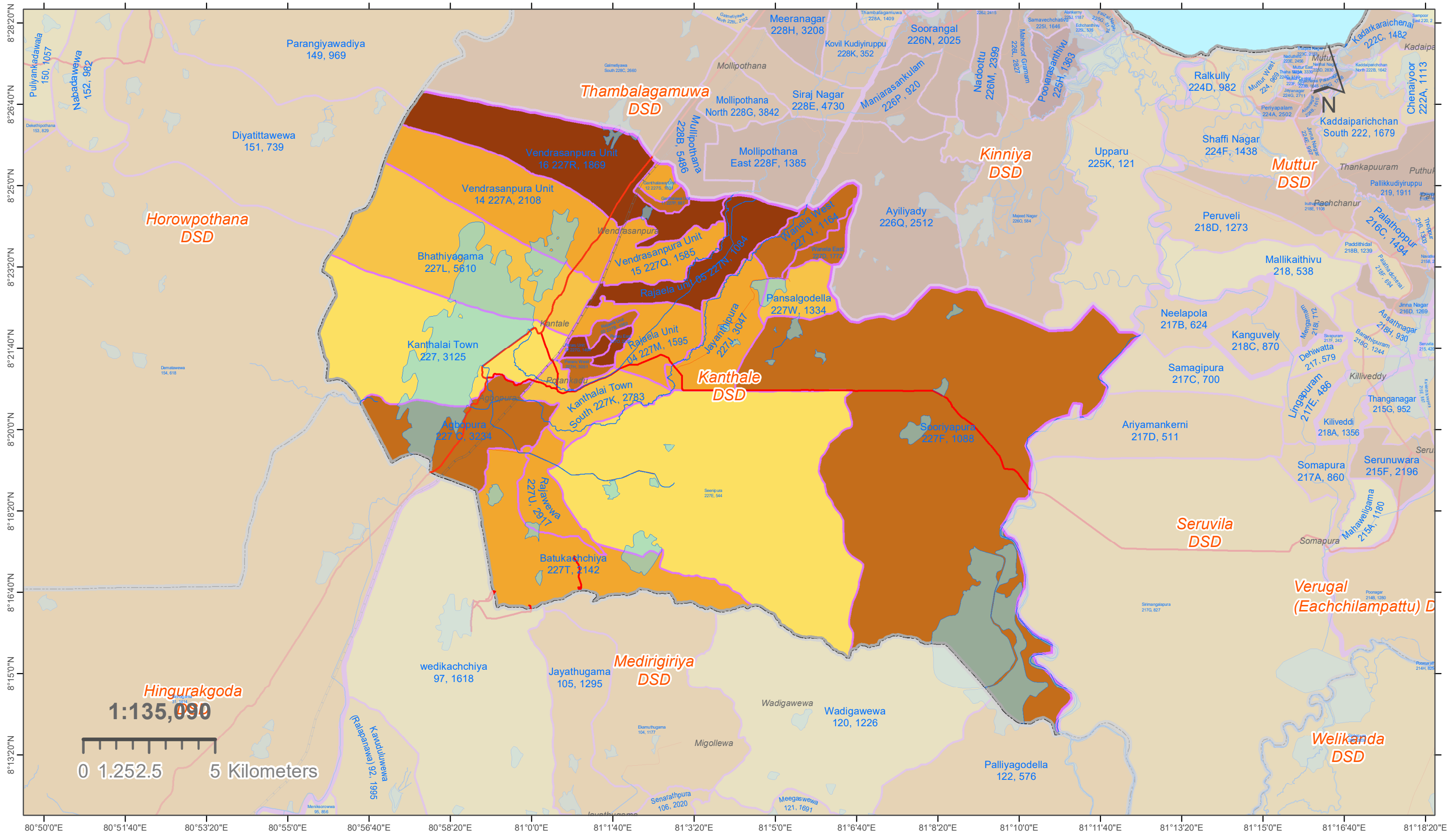
Note:
Used 2011/12 data-sets of Administrative Division (District / DSD / GND) Boundaries and Population data sets of Department of Census & Statistics.

Used 2020 Open Street Map Layers used for Feature Layers (Roads / Places / Water Bodies / Streams).

Software Used: Arc Map of Esri Organisation.

Prepared by the Cartography Division of Department of Census & Statistics.

MAP 5321 A: GN DIVISIONS OF KANTHALE DS DIVISION, TRINCOMALEE DISTRICT. (198) OVERLAYED WITH DEPENDANCY RATIO - 2012 (Percentage of Age less than 15 & over 60 Population)



Legend

- District Boundaries
- DSD Boundaries
- GND - Dependency Ratio****
- 0.0 - 29.3
- 29.4 - 52.5
- 52.6 - 59.9
- 60.0 - 66.5
- 66.6 - 74.8
- 74.9 - 92.7
- 92.8 - 158.9
- Expressways
- Main Roads
- Secondary Roads
- Tertiary Roads
- Water Areas
- Streams / Rivers

**Dependency Ratio =
(Persons Aged below 15 years
and above 59 years /
Persons Aged 15 to 59 years) * 100

Label Descriptions:

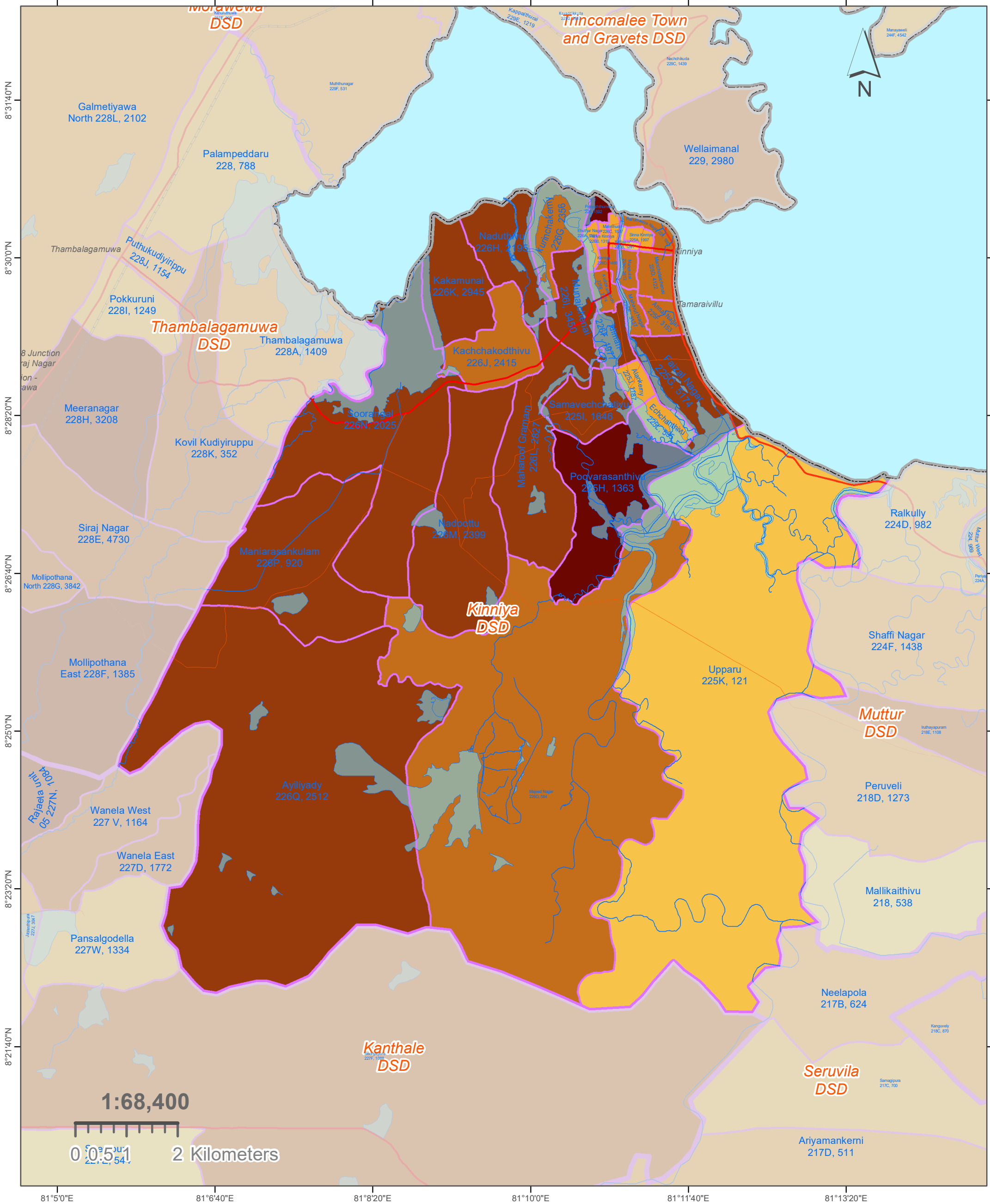
- GN Div. Name
 - GND Num., Population
 - Place Names
 - Daranagama
- Ex: Siyambalape South 274A, 6127



Note:
Used 2011/12 data-sets of Administrative Division (District / DSD / GND) Boundaries and Population data sets of Department of Census & Statistics.
Used 2020 Open Street Map Layers used for Feature Layers (Roads / Places / Water Bodies / Streams).
Software Used: Arc Map of Esri Organisation.
Prepared by the Cartography Division of Department of Census & Statistics.

MAP 5324 A: GN DIVISIONS OF KINNIYA DS DIVISION, TRINCOMALEE DISTRICT. (199)

OVERLAYED WITH DEPENDANCY RATIO - 2012 (Percentage of Age less than 15 & over 60 Population)



	District Boundaries		Water Areas		52.6 - 59.9
	DSD Boundaries		Streams / Rivers		60.0 - 66.5
	Expressways	GND - Dependency Ratio**			66.6 - 74.8
	Main Roads		0.0 - 29.3		74.9 - 92.7
	Secondary Roads		29.4 - 52.5		92.8 - 158.9
	Tertiary Roads	**Dependency Ratio = $\frac{\text{Persons Aged below 15 years and above 59 years}}{\text{Persons Aged 15 to 59 years}} * 100$			

Label Descriptions:

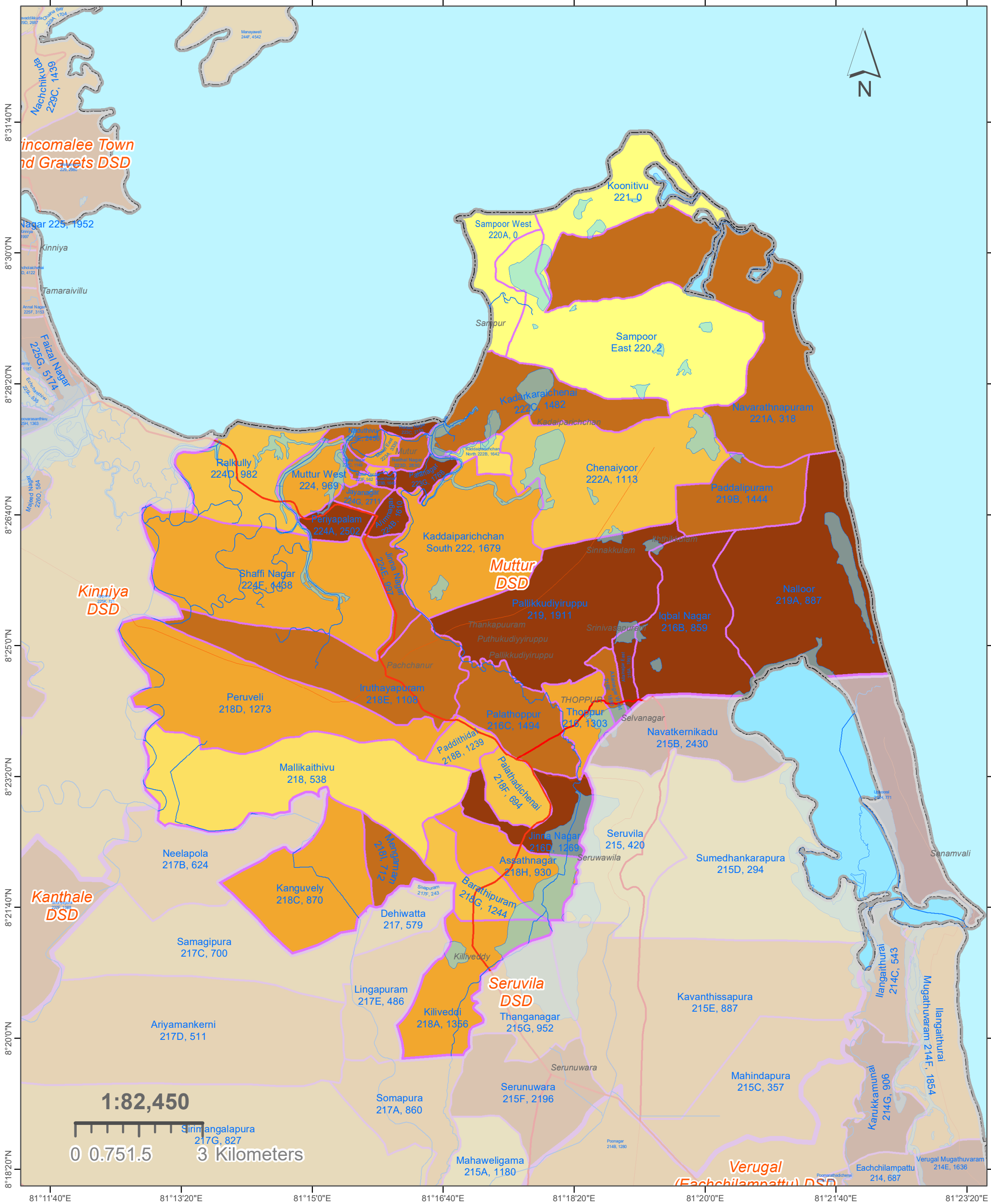
GN Div. Name *Place Names*
GND Num., Population

Ex: *Siyambalape South* *Daranagama*
 274A, 6127

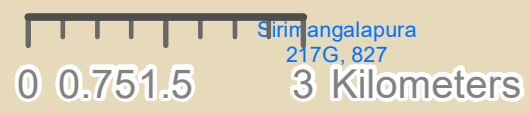
Note:
 Used 2011/12 data-sets of Administrative Division (District / DSD / GND) Boundaries and Population data sets of Department of Census & Statistics.
 Used 2020 Open Street Map Layers used for Feature Layers (Roads / Places / Water Bodies / Streams).
 Software Used: Arc Map of Esri Organisation.
 Prepared by the Cartography Division of Department of Census & Statistics.

MAP 5327 A: GN DIVISIONS OF MUTTUR DS DIVISION, TRINCOMALEE DISTRICT. (200)

OVERLAYED WITH DEPENDANCY RATIO - 2012 (Percentage of Age less than 15 & over 60 Population)



1:82,450



- District Boundaries
- DSD Boundaries
- Expressways
- Main Roads
- Secondary Roads
- Tertiary Roads
- Water Areas
- Streams / Rivers
- GND - Dependency Ratio****
- 0.0 - 29.3
- 29.4 - 52.5
- 52.6 - 59.9
- 60.0 - 66.5
- 66.6 - 74.8
- 74.9 - 92.7
- 92.8 - 158.9

**Dependency Ratio =
(Persons Aged below 15 years and above 59 years /
Persons Aged 15 to 59 years) * 100

Label Descriptions:

- GN Div. Name
- GND Num., Population
- Place Names
- Ex: Siyambalape South 274A, 6127**
- Daraganama

Note:
Used 2011/12 data-sets of Administrative Division (District / DSD / GND) Boundaries and Population data sets of Department of Census & Statistics.

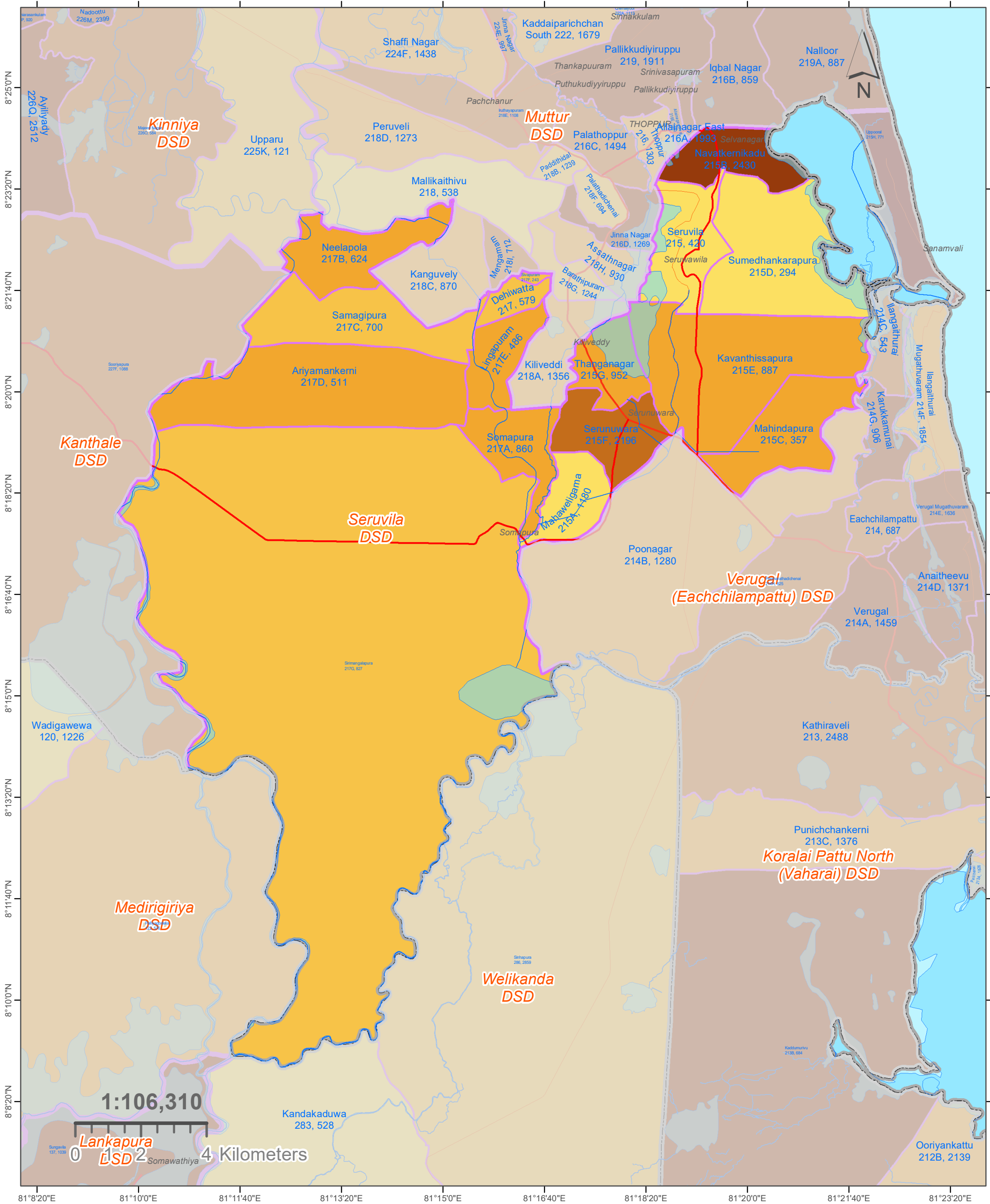
Used 2020 Open Street Map Layers used for Feature Layers (Roads / Places / Water Bodies / Streams).

Software Used: Arc Map of Esri Organisation.

Prepared by the Cartography Division of Department of Census & Statistics.

MAP 5330 A: GN DIVISIONS OF SERUVILA DS DIVISION, TRINCOMALEE DISTRICT. (201)

OVERLAYED WITH DEPENDANCY RATIO - 2012 (Percentage of Age less than 15 & over 60 Population)



	District Boundaries		Water Areas		52.6 - 59.9
	DSD Boundaries		Streams / Rivers		60.0 - 66.5
	Expressways	GND - Dependency Ratio**			66.6 - 74.8
	Main Roads		0.0 - 29.3		74.9 - 92.7
	Secondary Roads		29.4 - 52.5		92.8 - 158.9
	Tertiary Roads	**Dependency Ratio = (Persons Aged below 15 years and above 59 years / Persons Aged 15 to 59 years) * 100			

Label Descriptions:	
	GN Div. Name
	GND Num., Population
	Place Names
	Daraganama
Ex: Siyambalape South 274A, 6127	

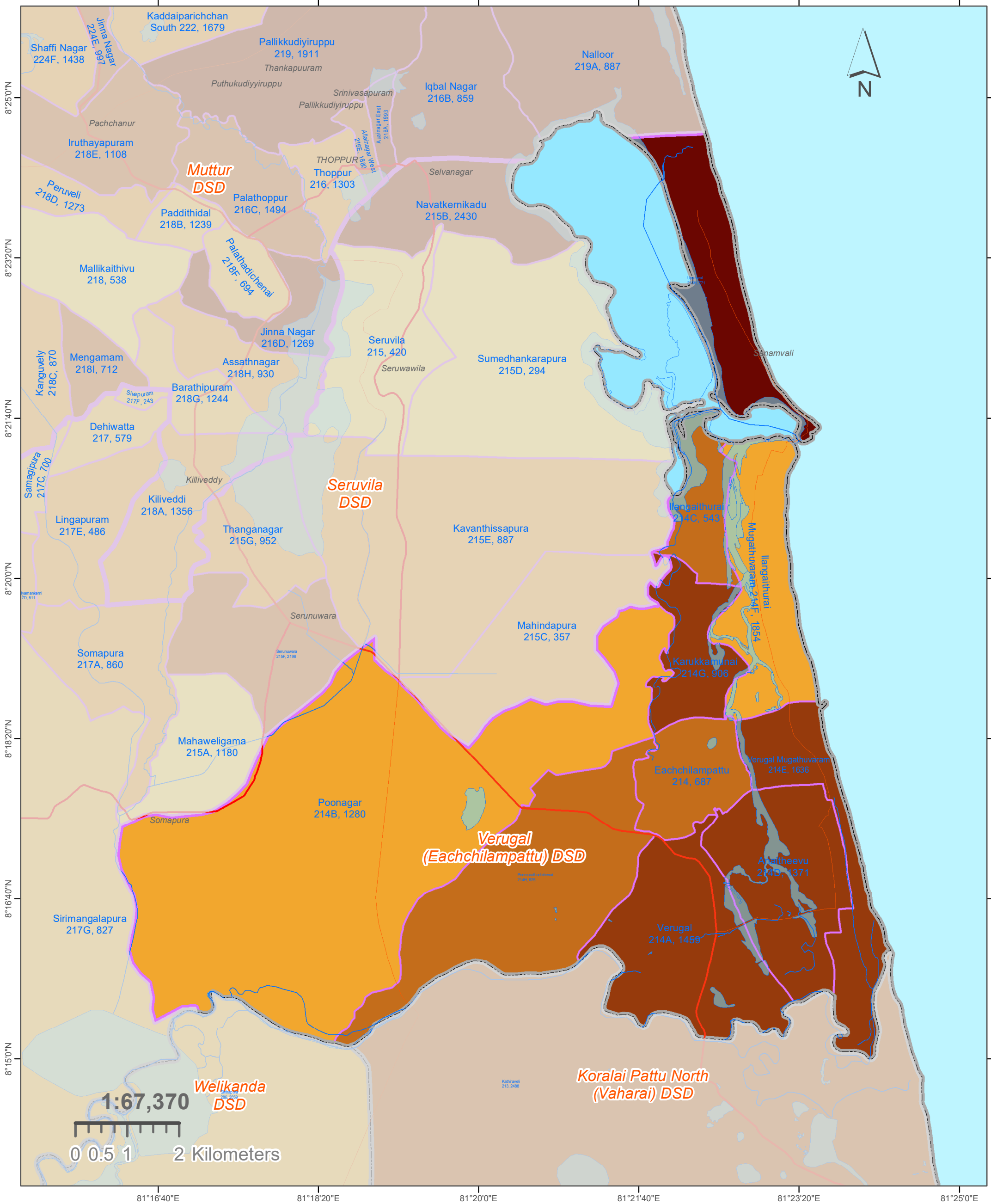
Note:
Used 2011/12 data-sets of Administrative Division (District / DSD / GND) Boundaries and Population data sets of Department of Census & Statistics.

Used 2020 Open Street Map Layers used for Feature Layers (Roads / Places / Water Bodies / Streams).

Software Used: Arc Map of Esri Organisation.

Prepared by the Cartography Division of Department of Census & Statistics.

MAP 5333 A: GN DIVISIONS OF VERUGAL (EACHCHILAMPATTU) DS DIVISION, TRINCOMALEE DISTRICT. (202)
OVERLAYED WITH DEPENDANCY RATIO - 2012 (Percentage of Age less than 15 & over 60 Population)



	District Boundaries		Water Areas		52.6 - 59.9	Label Descriptions:	Place Names	
	DSD Boundaries		Streams / Rivers		60.0 - 66.5			
	Expressways	GND - Dependency Ratio**			66.6 - 74.8	GN Div. Name GND Num., Population	Daraganama	
	Main Roads		0.0 - 29.3		74.9 - 92.7			
	Secondary Roads		29.4 - 52.5		92.8 - 158.9	Ex: Siyambalape South 274A, 6127		
	Tertiary Roads	**Dependency Ratio = (Persons Aged below 15 years and above 59 years / Persons Aged 15 to 59 years) * 100						

Note:
 Used 2011/12 data-sets of Administrative Division (District / DSD / GND) Boundaries and Population data sets of Department of Census & Statistics.

Used 2020 Open Street Map Layers used for Feature Layers (Roads / Places / Water Bodies / Streams).

Software Used: Arc Map of Esri Organisation.

Prepared by the Cartography Division of Department of Census & Statistics.