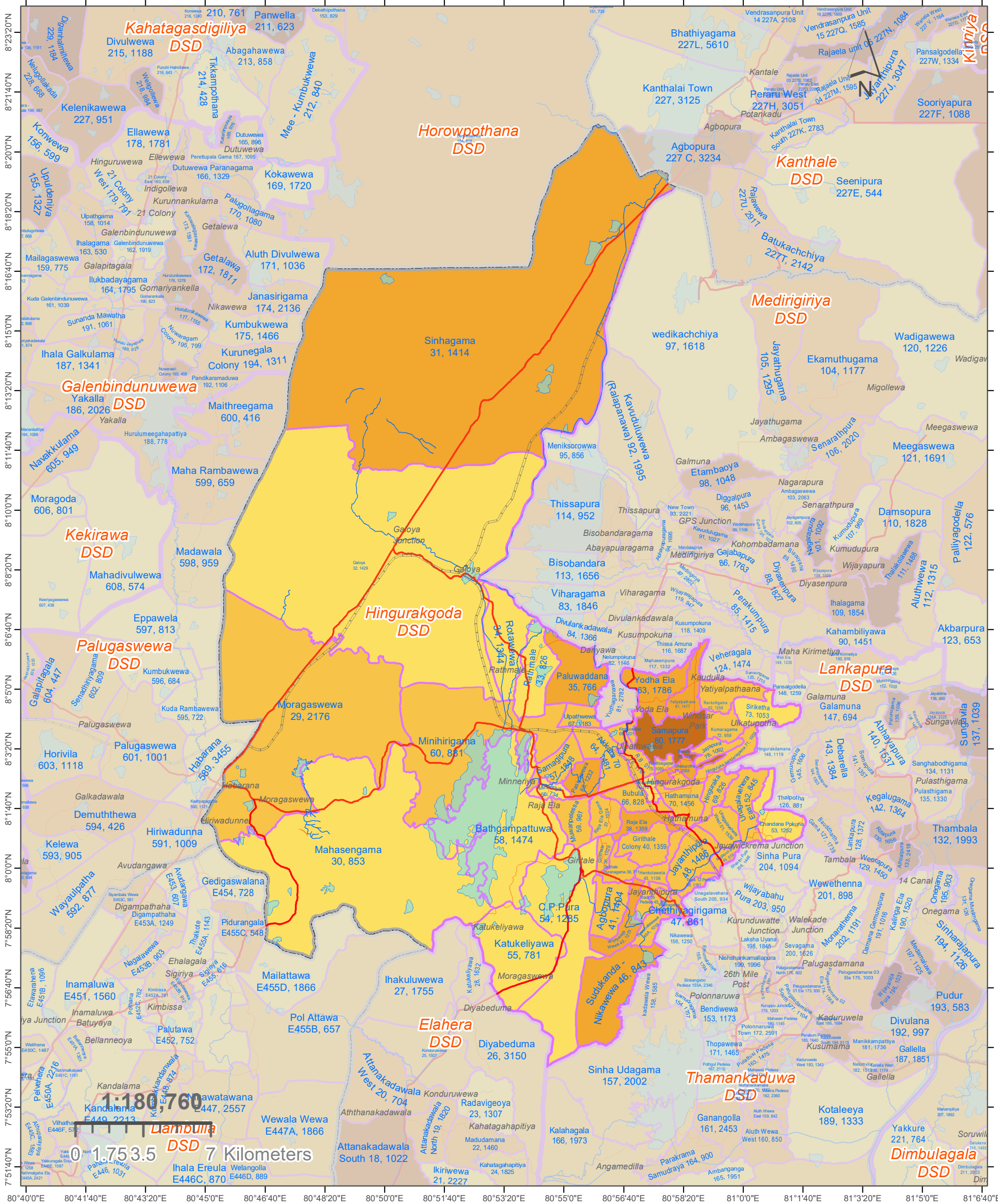


MAP 7203 A: GN DIVISIONS OF HINGURAKGODA DS DIVISION, POLONNARUWA DISTRICT. (271)

OVERLAYED WITH DEPENDANCY RATIO - 2012 (Percentage of Age less than 15 & over 60 Population)



	District Boundaries		Water Areas		52.6 - 59.9
	DSD Boundaries		Streams / Rivers		60.0 - 66.5
	Expressways	GN - Dependency Ratio**			66.6 - 74.8
	Main Roads		0.0 - 29.3		74.9 - 92.7
	Secondary Roads		29.4 - 52.5		92.8 - 158.9
	Tertiary Roads	**Dependency Ratio = (Persons Aged below 15 years and above 59 years / Persons Aged 15 to 59 years) * 100			

Label Descriptions:

GN Div. Name Place Names
 GND Num., Population

Ex: Siyambalape South Daranagama
 274A, 6127

Note:
 Used 2011/12 data-sets of Administrative Division (District / DSD / GND) Boundaries and Population data sets of Department of Census & Statistics.

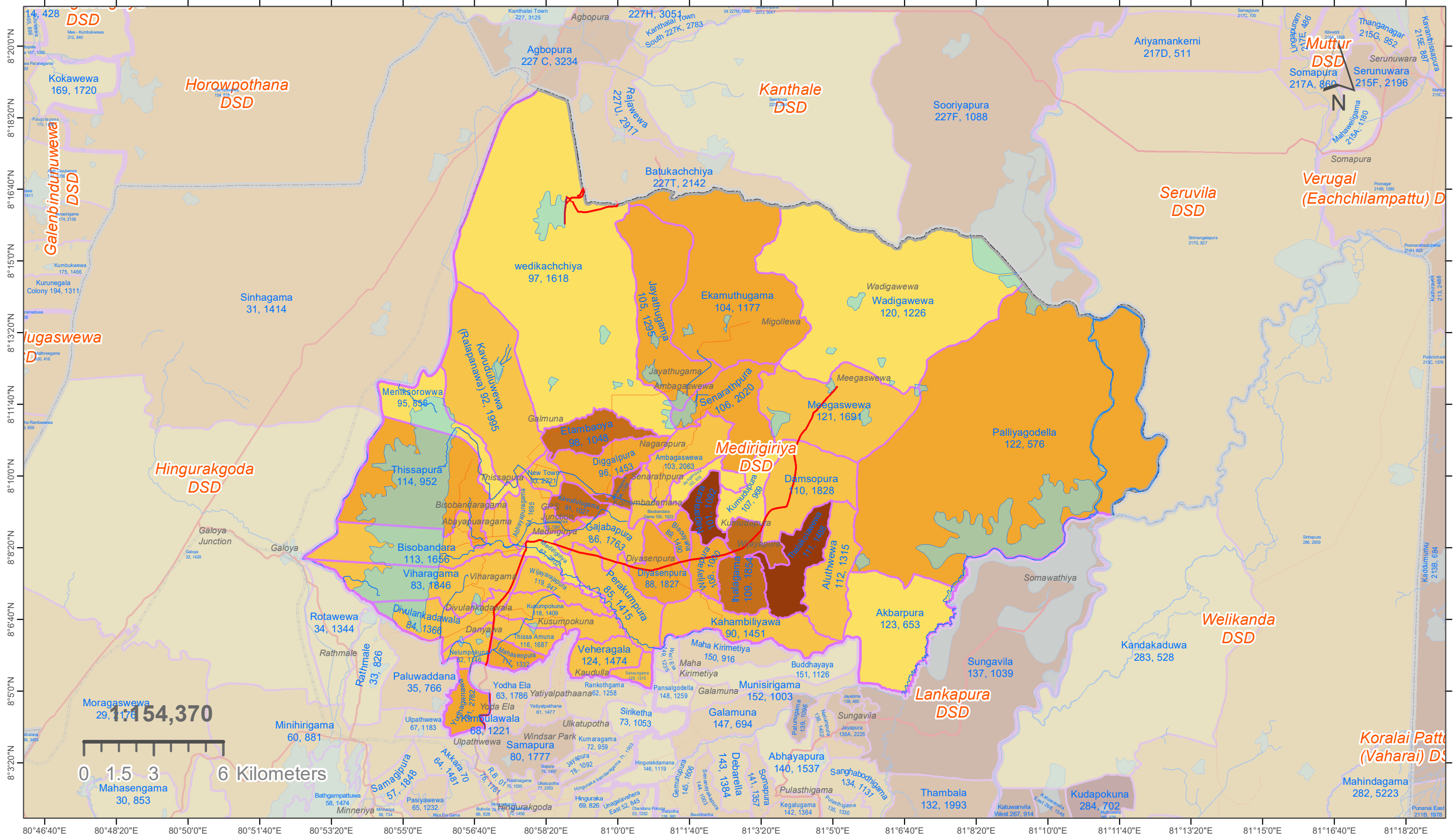
Used 2020 Open Street Map Layers used for Feature Layers (Roads / Places / Water Bodies / Streams).

Software Used: Arc Map of Esri Organisation.

Prepared by the Cartography Division of Department of Census & Statistics.



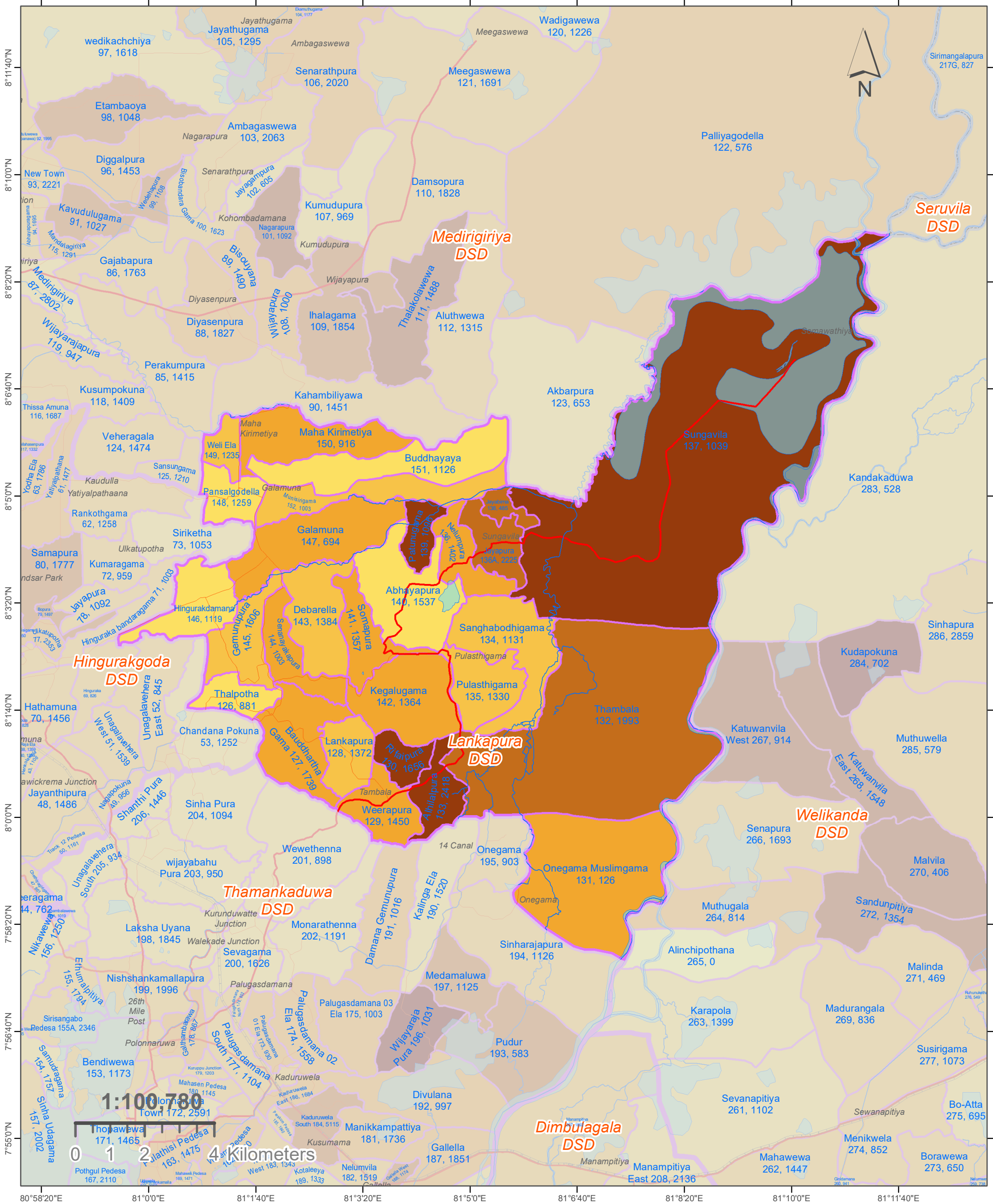
MAP 7206 A: GN DIVISIONS OF MEDIRIGIRIYA DS DIVISION, POLONNARUWA DISTRICT. (272) OVERLAYED WITH DEPENDANCY RATIO - 2012 (Percentage of Age less than 15 & over 60 Population)



Legend District Boundaries DSD Boundaries GND - Dependency Ratio** 0.0 - 29.3 29.4 - 52.5 52.6 - 59.9 60.0 - 66.5 66.6 - 74.8 74.9 - 92.7 92.8 - 158.9 Expressways Main Roads Secondary Roads Tertiary Roads Water Areas Streams / Rivers 		Label Descriptions: GN Div. Name GND Num., Population Place Names Ex: Siyambalape South 274A, 6127 Daranagama	<p>Note: Used 2011/12 data-sets of Administrative Division (District / DSD / GND) Boundaries and Population data sets of Department of Census & Statistics.</p> <p>Used 2020 Open Street Map Layers used for Feature Layers (Roads / Places / Water Bodies / Streams).</p> <p>Software Used: Arc Map of Esri Organisation.</p> <p>Prepared by the Cartography Division of Department of Census & Statistics.</p>
---	--	--	--

MAP 7209 A: GN DIVISIONS OF LANKAPURA DS DIVISION, POLONNARUWA DISTRICT. (273)

OVERLAYED WITH DEPENDANCY RATIO - 2012 (Percentage of Age less than 15 & over 60 Population)



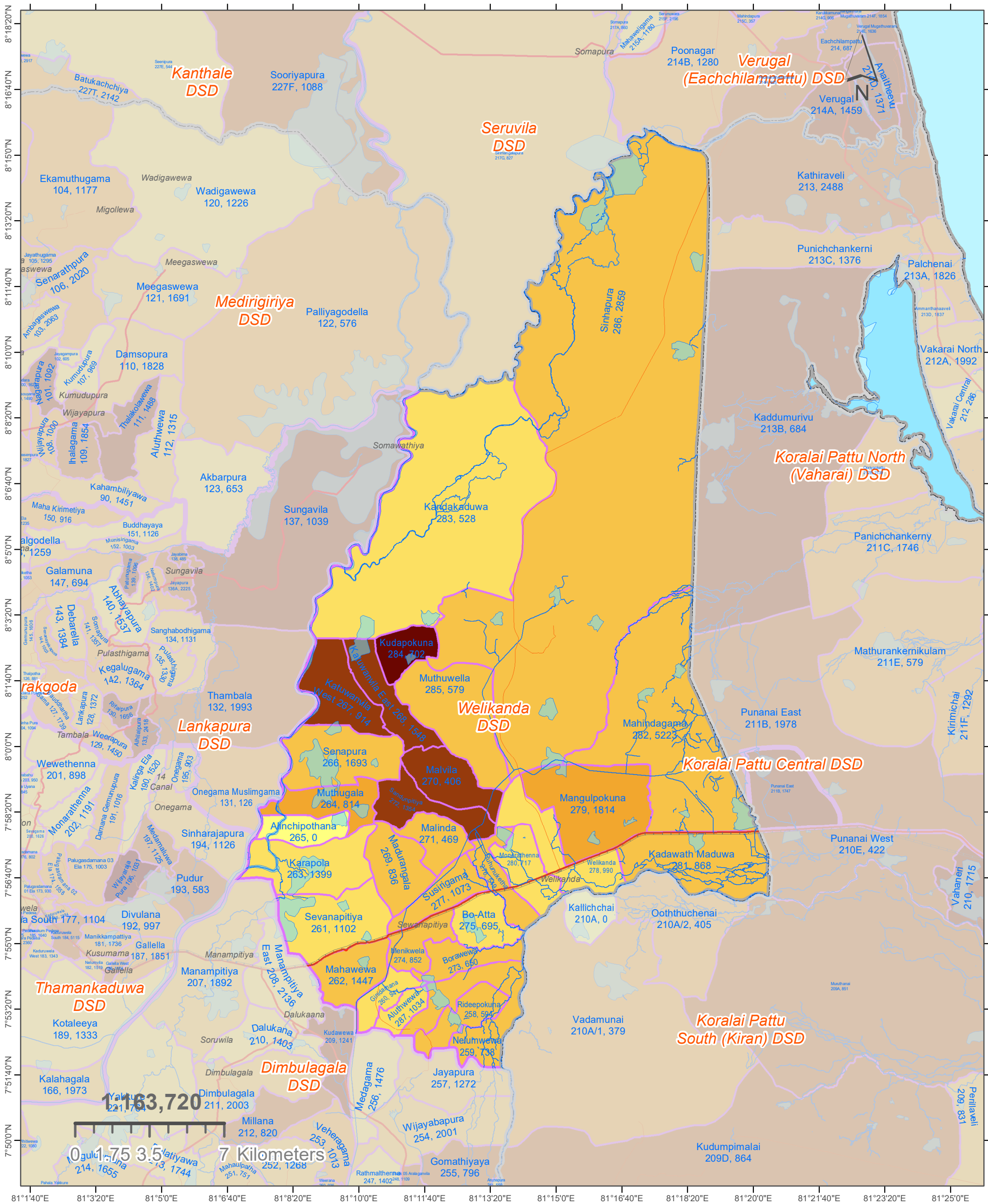
	District Boundaries		Water Areas		52.6 - 59.9
	DSD Boundaries		Streams / Rivers		60.0 - 66.5
	Expressways	GN - Dependency Ratio**			66.6 - 74.8
	Main Roads		0.0 - 29.3		74.9 - 92.7
	Secondary Roads		29.4 - 52.5		92.8 - 158.9
	Tertiary Roads	**Dependency Ratio = (Persons Aged below 15 years and above 59 years / Persons Aged 15 to 59 years) * 100			

Label Descriptions:	
<i>GN Div. Name</i>	Place Names
<i>GND Num., Population</i>	
Ex: Siyambalape South	Daranagama
274A, 6127	

Note:
Used 2011/12 data-sets of Administrative Division (District / DSD / GND) Boundaries and Population data sets of Department of Census & Statistics.
Used 2020 Open Street Map Layers used for Feature Layers (Roads / Places / Water Bodies / Streams).
Software Used: Arc Map of Esri Organisation.
Prepared by the Cartography Division of Department of Census & Statistics.

MAP 7210 A: GN DIVISIONS OF WELIKANDA DS DIVISION, POLONNARUWA DISTRICT. (274)

OVERLAYED WITH DEPENDANCY RATIO - 2012 (Percentage of Age less than 15 & over 60 Population)



	District Boundaries		Water Areas		52.6 - 59.9
	DSD Boundaries		Streams / Rivers		60.0 - 66.5
	Expressways	GND - Dependency Ratio**			66.6 - 74.8
	Main Roads		0.0 - 29.3		74.9 - 92.7
	Secondary Roads		29.4 - 52.5		92.8 - 158.9
	Tertiary Roads	**Dependency Ratio = (Persons Aged below 15 years and above 59 years / Persons Aged 15 to 59 years) * 100			

Label Descriptions:

GN Div. Name *Place Names*
GND Num., Population

Ex: Siyambalape South Daranagama
 274A, 6127

Note:
 Used 2011/12 data-sets of Administrative Division (District / DSD / GND) Boundaries and Population data sets of Department of Census & Statistics.

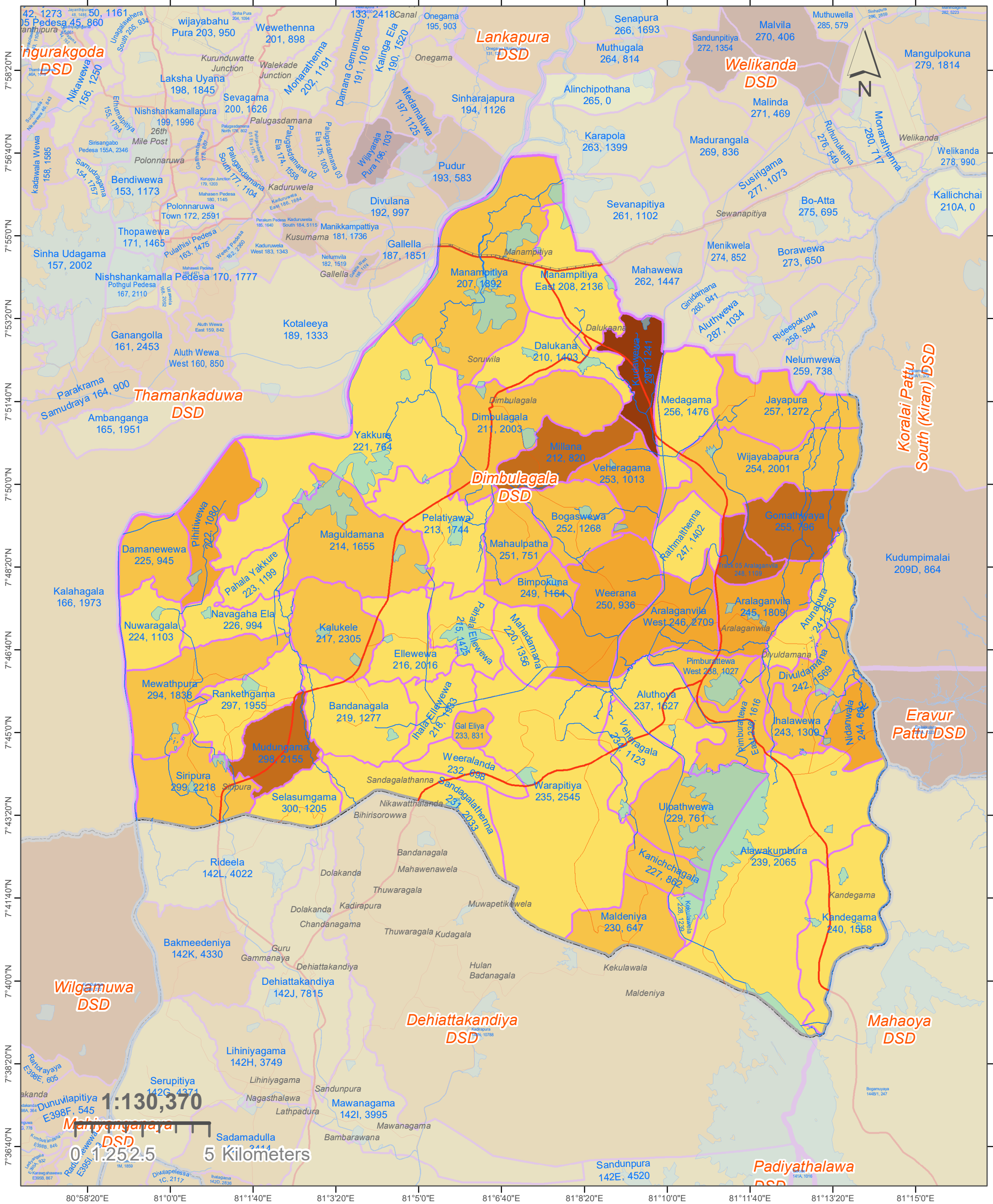
Used 2020 Open Street Map Layers used for Feature Layers (Roads / Places / Water Bodies / Streams).

Software Used: Arc Map of Esri Organisation.

Prepared by the Cartography Division of Department of Census & Statistics.

MAP 7212 A: GN DIVISIONS OF DIMBULAGALA DS DIVISION, POLONNARUWA DISTRICT. (275)

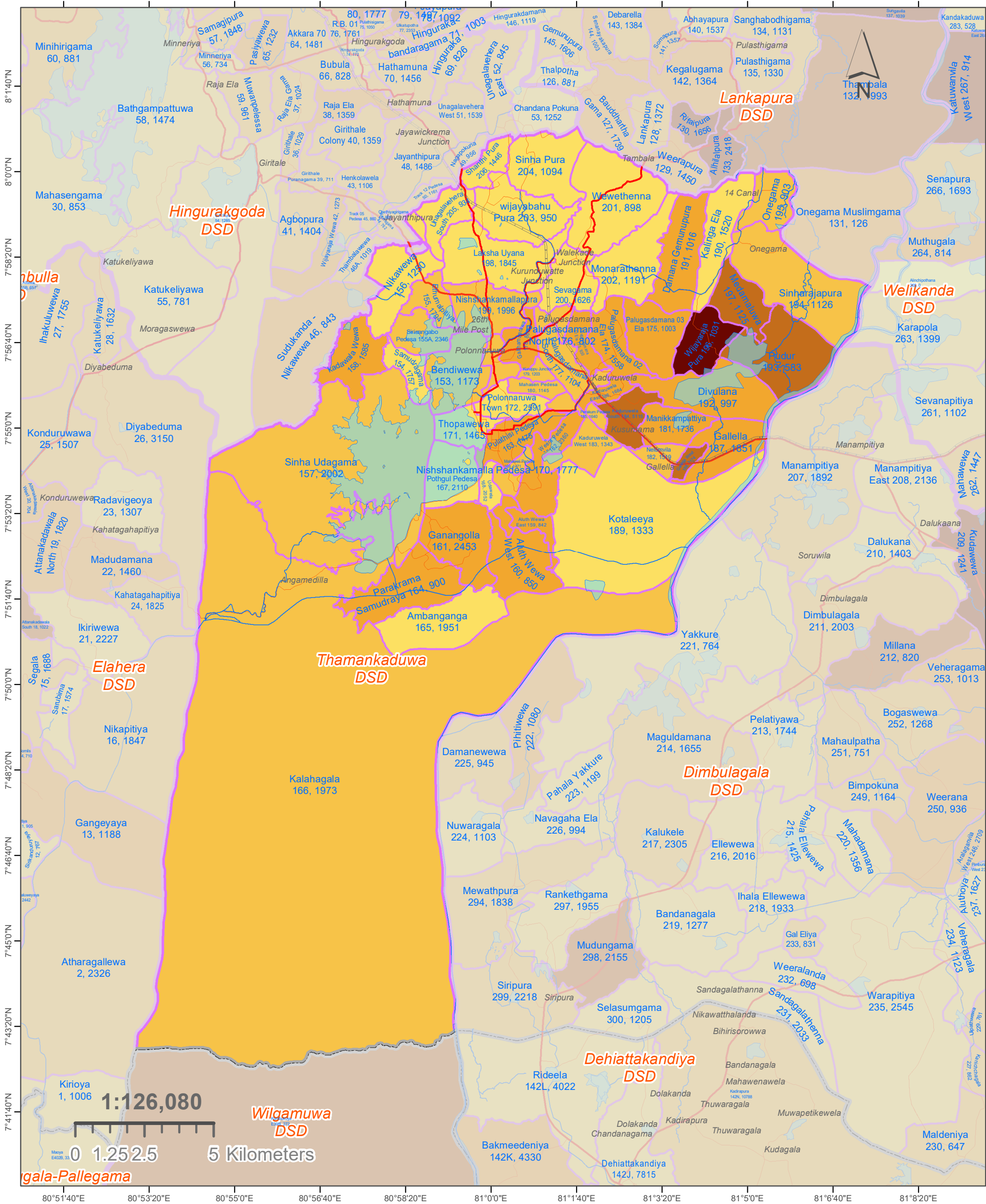
OVERLAYED WITH DEPENDANCY RATIO - 2012 (Percentage of Age less than 15 & over 60 Population)



<ul style="list-style-type: none"> District Boundaries DSD Boundaries Expressways Main Roads Secondary Roads Tertiary Roads 	<ul style="list-style-type: none"> Water Areas Streams / Rivers <p>GND - Dependency Ratio**</p> <ul style="list-style-type: none"> 0.0 - 29.3 29.4 - 52.5 52.6 - 59.9 60.0 - 66.5 66.6 - 74.8 74.9 - 92.7 92.8 - 158.9 	<p>**Dependency Ratio = (Persons Aged below 15 years and above 59 years / Persons Aged 15 to 59 years) * 100</p>	<p><u>Label Descriptions:</u></p> <p><i>GN Div. Name</i> <i>Place Names</i> <i>GND Num., Population</i></p> <p>Ex: Siyambalape South <i>Daranagama</i> 274A, 6127</p>	<p>Note: Used 2011/12 data-sets of Administrative Division (District / DSD / GND) Boundaries and Population data sets of Department of Census & Statistics.</p> <p>Used 2020 Open Street Map Layers used for Feature Layers (Roads / Places / Water Bodies / Streams).</p> <p> Software Used: Arc Map of Esri Organisation.</p> <p>Prepared by the Cartography Division of Department of Census & Statistics.</p>
---	---	---	--	--

MAP 7215 A: GN DIVISIONS OF THAMANKADUWA DS DIVISION, POLONNARUWA DISTRICT. (276)

OVERLAYED WITH DEPENDANCY RATIO - 2012 (Percentage of Age less than 15 & over 60 Population)



	District Boundaries		Water Areas		52.6 - 59.9
	DSD Boundaries		Streams / Rivers		60.0 - 66.5
	Expressways	GND - Dependency Ratio**			66.6 - 74.8
	Main Roads		0.0 - 29.3		74.9 - 92.7
	Secondary Roads		29.4 - 52.5		92.8 - 158.9
	Tertiary Roads	**Dependency Ratio = (Persons Aged below 15 years and above 59 years / Persons Aged 15 to 59 years) * 100			

Label Descriptions:

GN Div. Name *Place Names*
GND Num., Population

Ex: Siyambalape South 274A, 6127 Daranagama

Note:
 Used 2011/12 data-sets of Administrative Division (District / DSD / GND) Boundaries and Population data sets of Department of Census & Statistics.

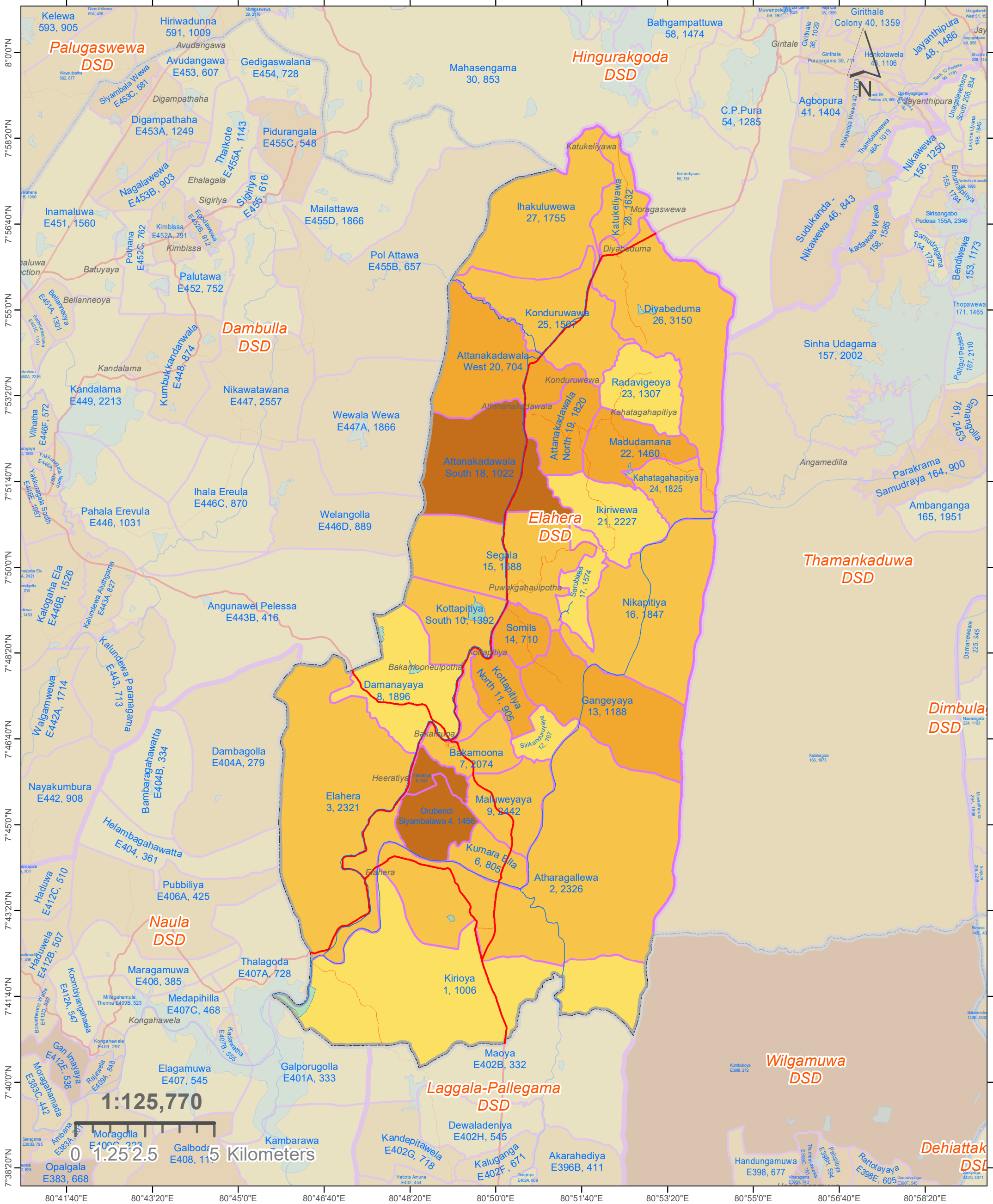
Used 2020 Open Street Map Layers used for Feature Layers (Roads / Places / Water Bodies / Streams).

Software Used: Arc Map of Esri Organisation.

Prepared by the Cartography Division of Department of Census & Statistics.

MAP 7218 A: GN DIVISIONS OF ELAHERA DS DIVISION, POLONNARUWA DISTRICT. (277)

OVERLAYED WITH DEPENDANCY RATIO - 2012 (Percentage of Age less than 15 & over 60 Population)



	District Boundaries		Water Areas		52.6 - 59.9
	DSD Boundaries		Streams / Rivers		60.0 - 66.5
	Expressways	GND - Dependency Ratio**			66.6 - 74.8
	Main Roads		0.0 - 29.3		74.9 - 92.7
	Secondary Roads		29.4 - 52.5		92.8 - 158.9
	Tertiary Roads	**Dependency Ratio = (Persons Aged below 15 years and above 59 years / Persons Aged 15 to 59 years) * 100			

Label Descriptions:

GN Div. Name *Place Names*
GND Num., Population

Ex: Siyambalape South 274A, 6127 Daranagama

Note:
Used 2011/12 data-sets of Administrative Division (District / DSD / GND) Boundaries and Population data sets of Department of Census & Statistics.

Used 2020 Open Street Map Layers used for Feature Layers (Roads / Places / Water Bodies / Streams).

Software Used: Arc Map of Esri Organisation.

Prepared by the Cartography Division of Department of Census & Statistics.