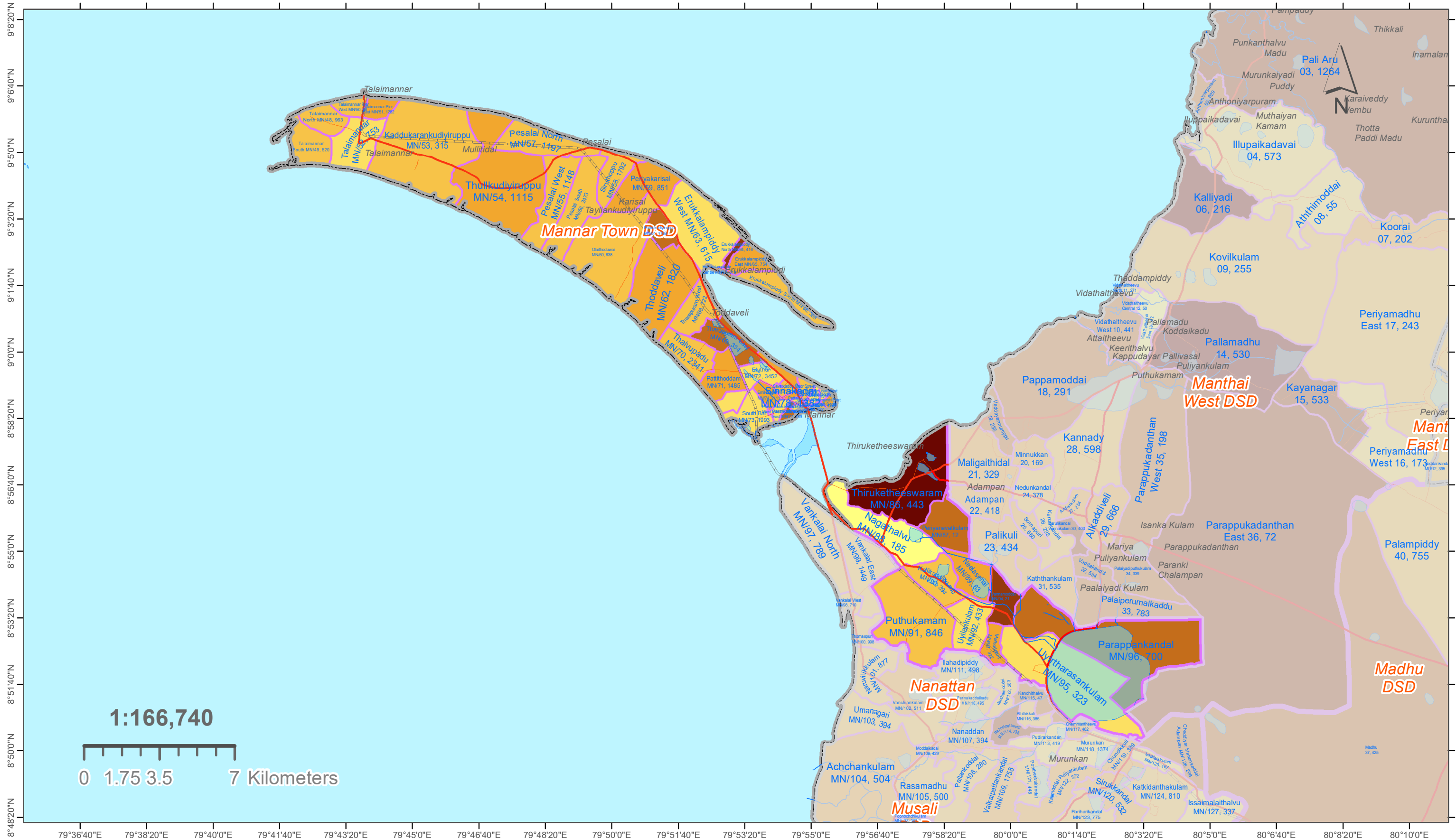


# MAP 4203 A: GN DIVISIONS OF MANNAR TOWN DS DIVISION, MANNAR DISTRICT. (139) OVERLAYED WITH DEPENDANCY RATIO - 2012 (Percentage of Age less than 15 & over 60 Population)



**Legend**

	District Boundaries		Expressways		Water Areas
	DSD Boundaries		Main Roads		Streams / Rivers
	<b>GND - Dependency Ratio**</b>		Secondary Roads	<b>**Dependency Ratio =</b> (Persons Aged below 15 years and above 59 years / Persons Aged 15 to 59 years) * 100	
	0.0 - 29.3		Tertiary Roads		
	52.6 - 59.9				
	60.0 - 66.5				
	66.6 - 74.8				
	74.9 - 92.7				
	92.8 - 158.9				

**Label Descriptions:**

GN Div. Name  
GND Num., Population

Place Names

Daranagama

Ex: Siyambalape South  
274A, 6127



**Note:**  
Used 2011/12 data-sets of Administrative Division (District / DSD / GND) Boundaries and Population data sets of Department of Census & Statistics.

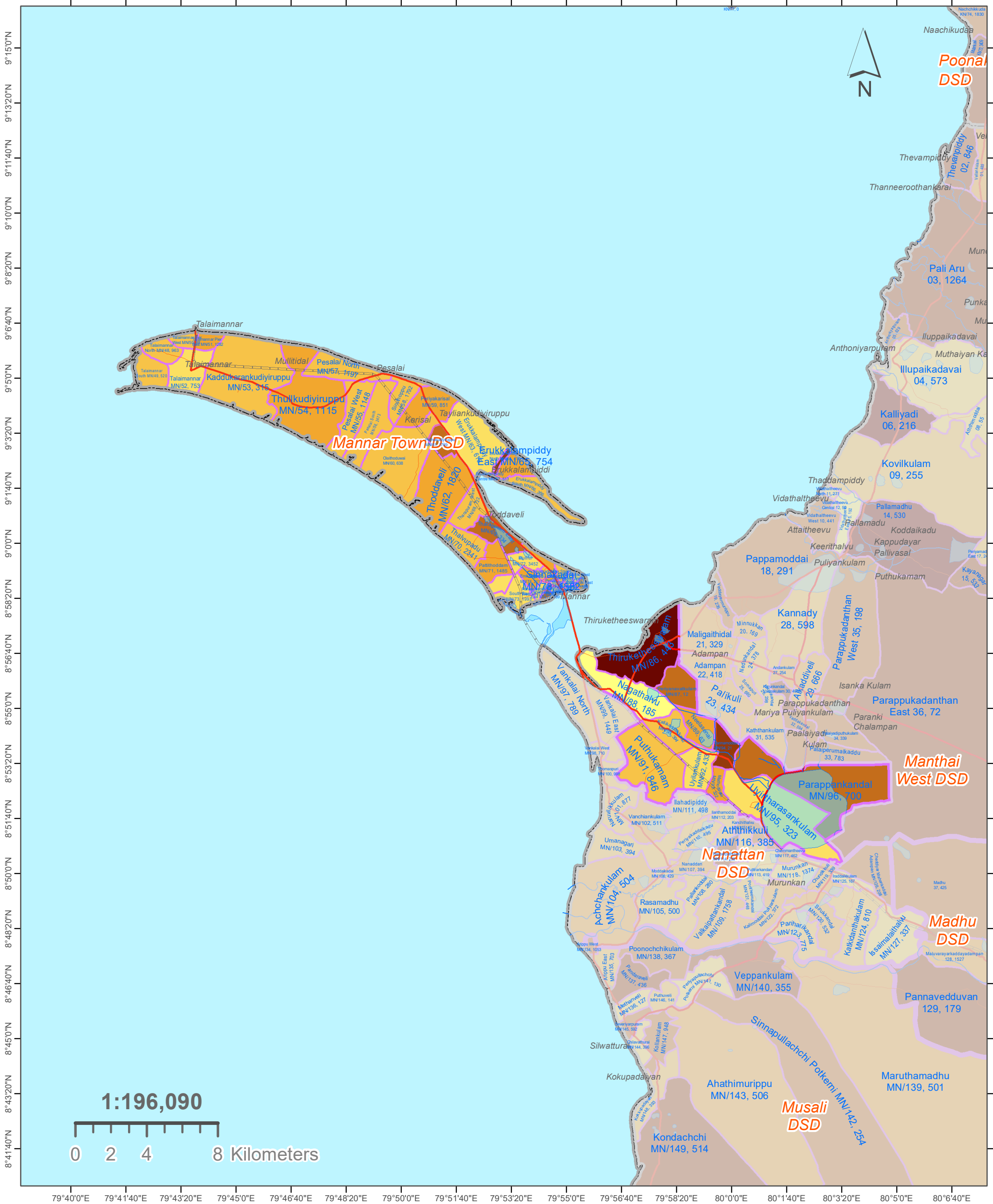
Used 2020 Open Street Map Layers used for Feature Layers (Roads / Places / Water Bodies / Streams).

Software Used: Arc Map of Esri Organisation.

Prepared by the Cartography Division of Department of Census & Statistics.

# MAP 4203 A: GN DIVISIONS OF MANNAR TOWN DS DIVISION, MANNAR DISTRICT. (139)

OVERLAYED WITH DEPENDANCY RATIO - 2012 (Percentage of Age less than 15 & over 60 Population)



	District Boundaries		Water Areas		52.6 - 59.9
	DSD Boundaries		Streams / Rivers		60.0 - 66.5
	Expressways	<b>GND - Dependency Ratio**</b>			66.6 - 74.8
	Main Roads		0.0 - 29.3		74.9 - 92.7
	Secondary Roads		29.4 - 52.5		92.8 - 158.9
	Tertiary Roads	**Dependency Ratio = (Persons Aged below 15 years and above 59 years / Persons Aged 15 to 59 years) * 100			

**Label Descriptions:**

GN Div. Name      Place Names  
 GND Num., Population

Ex: Siyambalape South      Daranagama  
 274A, 6127

Note:  
 Used 2011/12 data-sets of Administrative Division (District / DSD / GND) Boundaries and Population data sets of Department of Census & Statistics.

Used 2020 Open Street Map Layers used for Feature Layers (Roads / Places / Water Bodies / Streams).

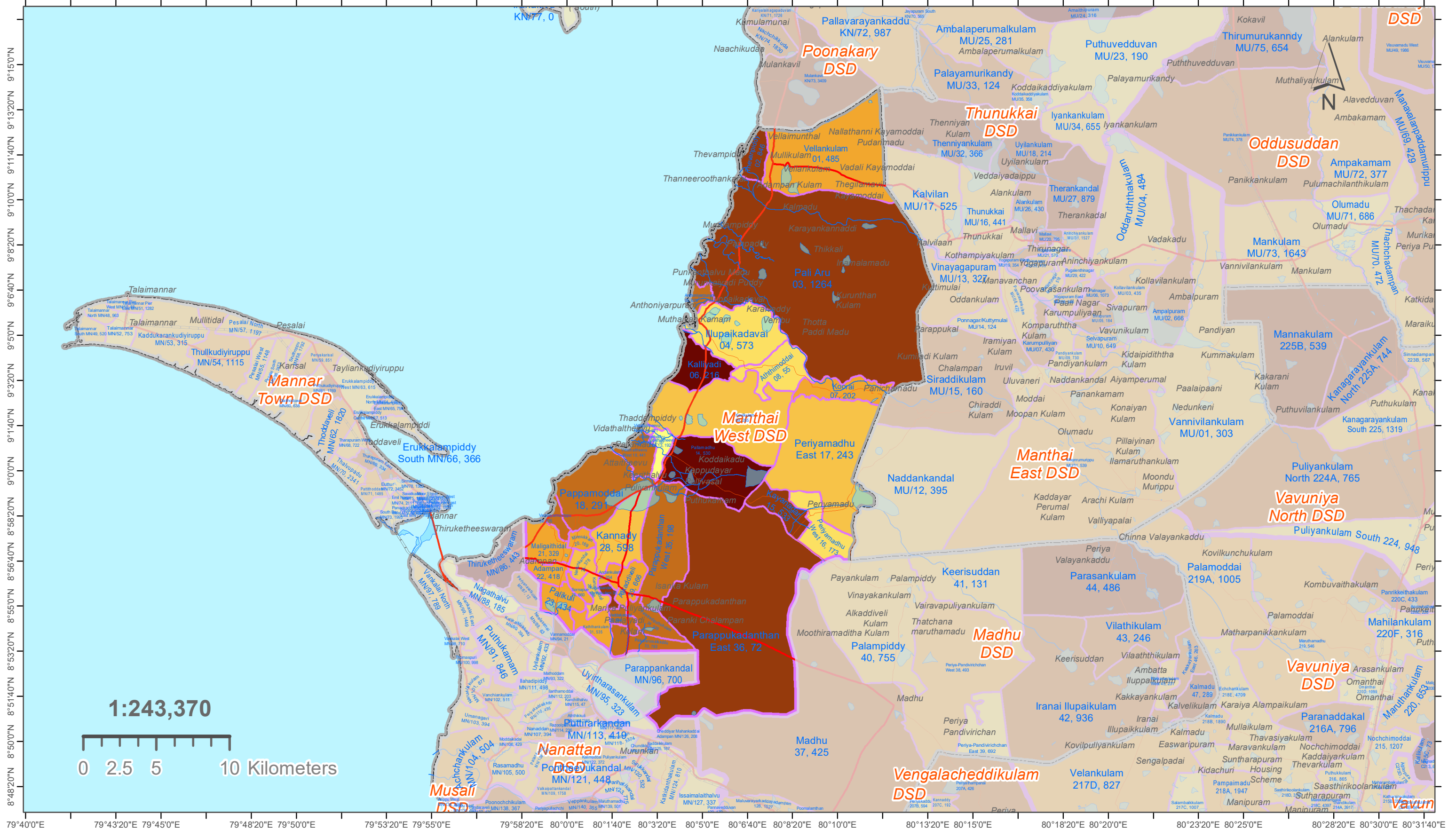
Software Used: Arc Map of Esri Organisation.

Prepared by the Cartography Division of Department of Census & Statistics.





# MAP 4206 A: GN DIVISIONS OF MANTHAI WEST DS DIVISION, MANNAR DISTRICT. (140) OVERLAYED WITH DEPENDANCY RATIO - 2012 (Percentage of Age less than 15 & over 60 Population)

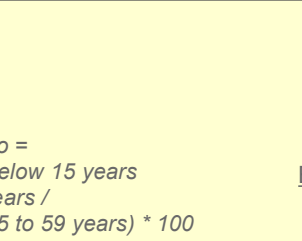
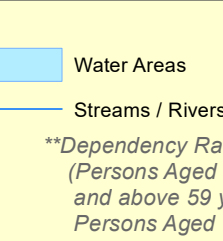


**Legend**

	District Boundaries		Expressways		Water Areas
	DSD Boundaries		Main Roads		Streams / Rivers
	<b>GN - Dependency Ratio**</b>		Secondary Roads	<b>**Dependency Ratio =</b> (Persons Aged below 15 years and above 59 years / Persons Aged 15 to 59 years) * 100	
	0.0 - 29.3		Tertiary Roads		
	29.4 - 52.5				
	52.6 - 59.9				
	60.0 - 66.5				
	66.6 - 74.8				
	74.9 - 92.7				
	92.8 - 158.9				

**Label Descriptions:**

GN Div. Name GND Num., Population	Place Names
Ex: Siyambalape South 274A, 6127	Daranagama

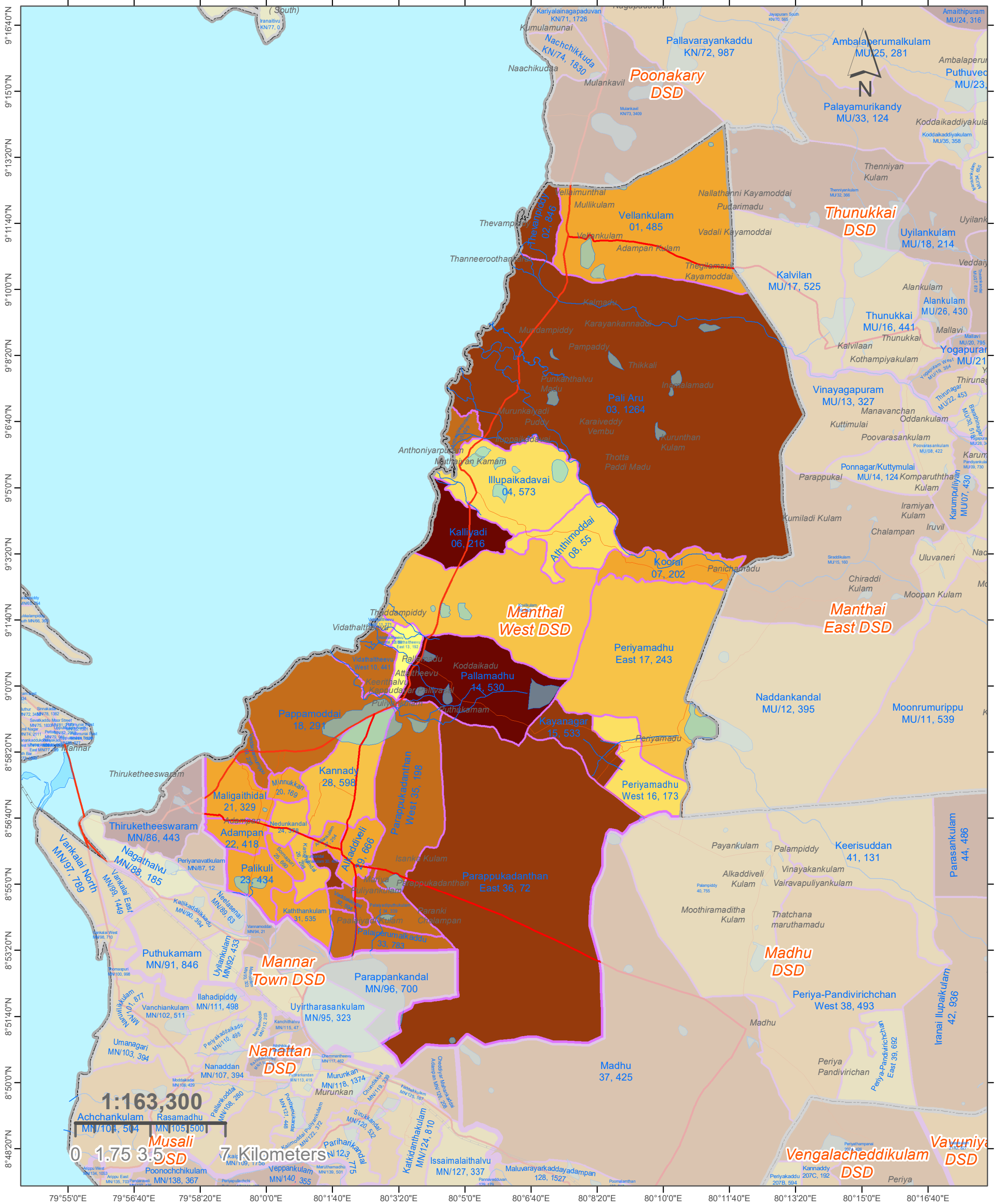


Note:  
Used 2011/12 data-sets of Administrative Division (District / DSD / GND)  
Boundaries and Population data sets of Department of Census & Statistics.  
Used 2020 Open Street Map Layers used for Feature Layers  
(Roads / Places / Water Bodies / Streams ).  
Software Used: Arc Map of Esri Organisation.  
Prepared by the Cartography Division of Department of Census & Statistics.



# MAP 4206 A: GN DIVISIONS OF MANTHAI WEST DS DIVISION, MANNAR DISTRICT. (140)

## OVERLAYED WITH DEPENDANCY RATIO - 2012 (Percentage of Age less than 15 & over 60 Population)



	District Boundaries		Water Areas		52.6 - 59.9
	DSD Boundaries		Streams / Rivers		60.0 - 66.5
	Expressways	<b>GND - Dependency Ratio**</b>			66.6 - 74.8
	Main Roads		0.0 - 29.3		74.9 - 92.7
	Secondary Roads		29.4 - 52.5		92.8 - 158.9
	Tertiary Roads	**Dependency Ratio = (Persons Aged below 15 years and above 59 years / Persons Aged 15 to 59 years) * 100			

<b>Label Descriptions:</b>	
<i>GN Div. Name</i>	Place Names
<i>GND Num., Population</i>	
Ex: Siyambalape South 274A, 6127	Daranagama

Note:  
Used 2011/12 data-sets of Administrative Division (District / DSD / GND) Boundaries and Population data sets of Department of Census & Statistics.

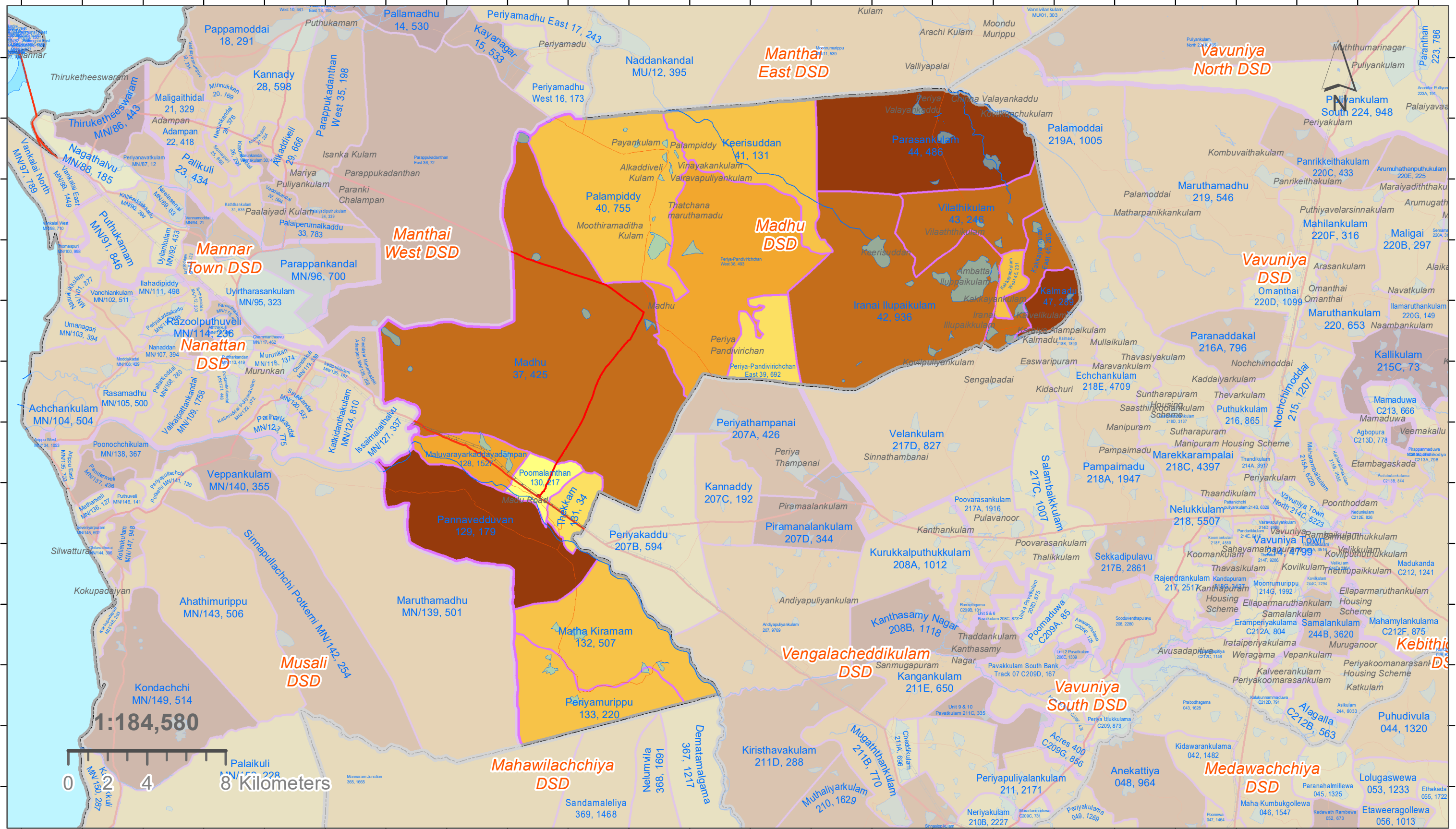
Used 2020 Open Street Map Layers used for Feature Layers (Roads / Places / Water Bodies / Streams).

Software Used: Arc Map of Esri Organisation.

Prepared by the Cartography Division of Department of Census & Statistics.



# MAP 4209 A: GN DIVISIONS OF MADHU DS DIVISION, MANNAR DISTRICT. (141) OVERLAYED WITH DEPENDANCY RATIO - 2012 (Percentage of Age less than 15 & over 60 Population)



### Legend

- District Boundaries
- DSD Boundaries
- GND - Dependency Ratio\*\***
- 0.0 - 29.3
- 29.4 - 52.5
- 52.6 - 59.9
- 60.0 - 66.5
- 66.6 - 74.8
- 74.9 - 92.7
- 92.8 - 158.9
- Expressways
- Main Roads
- Secondary Roads
- Tertiary Roads
- Water Areas
- Streams / Rivers

\*\*Dependency Ratio =  
(Persons Aged below 15 years  
and above 59 years /  
Persons Aged 15 to 59 years) \* 100

### Label Descriptions:

GN Div. Name  
GND Num., Population  
Place Names

Ex: Siyambalape South  
274A, 6127  
Daranagama



Note:  
Used 2011/12 data-sets of Administrative Division (District / DSD / GND)  
Boundaries and Population data sets of Department of Census & Statistics.

Used 2020 Open Street Map Layers used for Feature Layers  
(Roads / Places / Water Bodies / Streams).

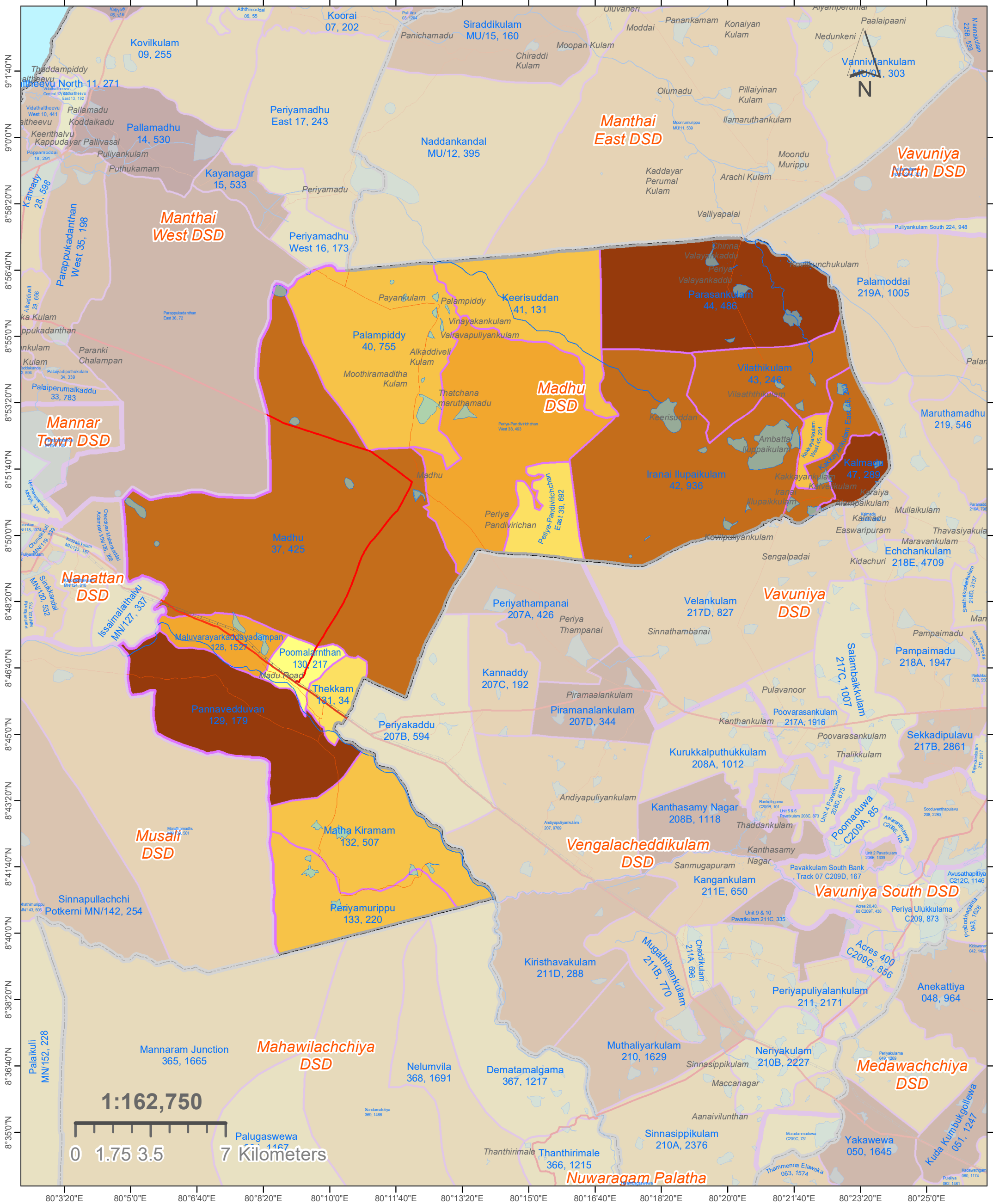
Software Used: Arc Map of Esri Organisation.

Prepared by the Cartography Division of Department of Census & Statistics.



# MAP 4209 A: GN DIVISIONS OF MADHU DS DIVISION, MANNAR DISTRICT. (141)

## OVERLAYED WITH DEPENDANCY RATIO - 2012 (Percentage of Age less than 15 & over 60 Population)



	District Boundaries		Water Areas		52.6 - 59.9
	DSD Boundaries		Streams / Rivers		60.0 - 66.5
	Expressways	<b>GND - Dependency Ratio**</b>			66.6 - 74.8
	Main Roads		0.0 - 29.3		74.9 - 92.7
	Secondary Roads		29.4 - 52.5		92.8 - 158.9
	Tertiary Roads	**Dependency Ratio = (Persons Aged below 15 years and above 59 years / Persons Aged 15 to 59 years) * 100			

**Label Descriptions:**

*GN Div. Name*      *Place Names*  
*GND Num., Population*

Ex: *Siyambalape South*      *Daranagama*  
 274A, 6127

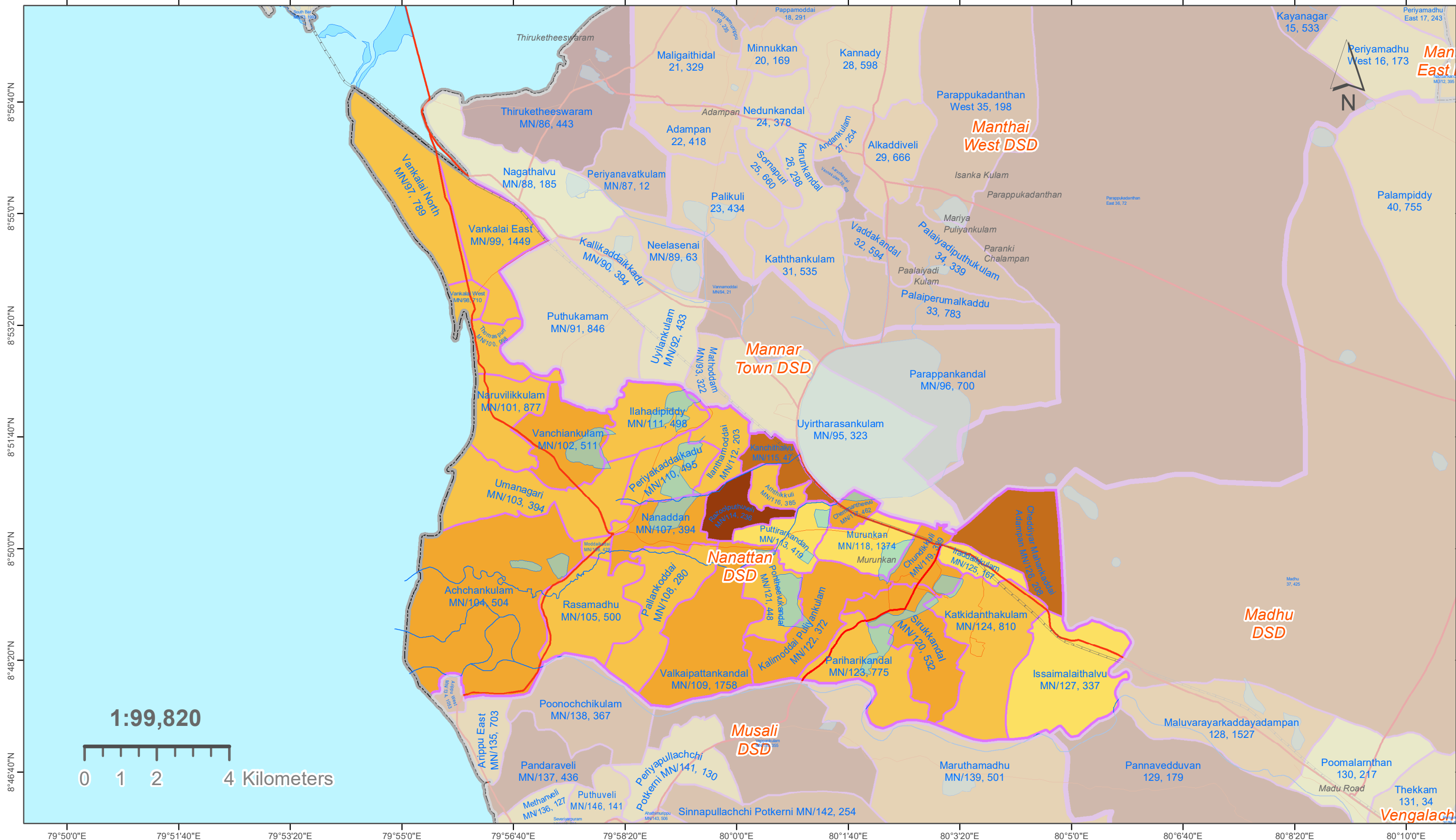
Note:  
 Used 2011/12 data-sets of Administrative Division (District / DSD / GND) Boundaries and Population data sets of Department of Census & Statistics.

Used 2020 Open Street Map Layers used for Feature Layers (Roads / Places / Water Bodies / Streams).

Software Used: Arc Map of Esri Organisation.

Prepared by the Cartography Division of Department of Census & Statistics.

# MAP 4212 A: GN DIVISIONS OF NANATTAN DS DIVISION, MANNAR DISTRICT. (142) OVERLAYED WITH DEPENDANCY RATIO - 2012 (Percentage of Age less than 15 & over 60 Population)



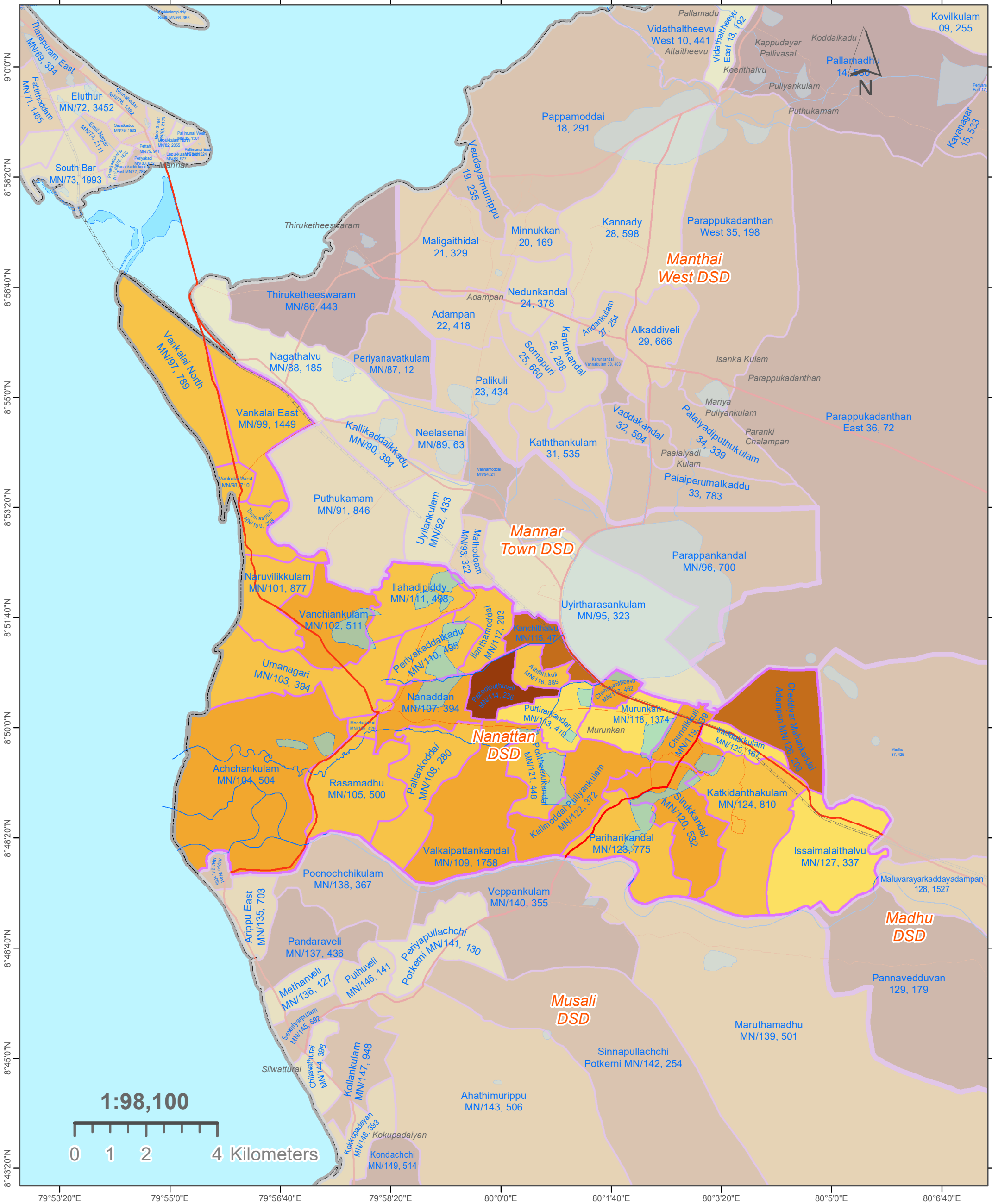
Legend		Label Descriptions:	
	District Boundaries	<b>GN Div. Name</b>	Place Names
	DSD Boundaries	<b>GND Num., Population</b>	Daranagama
<b>GND - Dependency Ratio**</b>		<b>Ex: Siyambalape South</b>	
	0.0 - 29.3	<b>274A, 6127</b>	
	29.4 - 52.5		
	52.6 - 59.9		
	60.0 - 66.5		
	66.6 - 74.8		
	74.9 - 92.7		
	92.8 - 158.9		
	Expressways		
	Main Roads		
	Secondary Roads		
	Tertiary Roads		
	Water Areas		
	Streams / Rivers		

**\*\*Dependency Ratio = (Persons Aged below 15 years and above 59 years / Persons Aged 15 to 59 years) \* 100**

**Note:** Used 2011/12 data-sets of Administrative Division (District / DSD / GND) Boundaries and Population data sets of Department of Census & Statistics.  
Used 2020 Open Street Map Layers used for Feature Layers (Roads / Places / Water Bodies / Streams).  
Software Used: Arc Map of Esri Organisation.  
Prepared by the Cartography Division of Department of Census & Statistics.



# MAP 4212 A: GN DIVISIONS OF NANATTAN DS DIVISION, MANNAR DISTRICT. (142) OVERLAYED WITH DEPENDANCY RATIO - 2012 (Percentage of Age less than 15 & over 60 Population)



**Legend:**

- District Boundaries
- DSD Boundaries
- Expressways
- Main Roads
- Secondary Roads
- Tertiary Roads
- Water Areas
- Streams / Rivers
- GND - Dependency Ratio\*\*
  - 0.0 - 29.3
  - 29.4 - 52.5
  - 52.6 - 59.9
  - 60.0 - 66.5
  - 66.6 - 74.8
  - 74.9 - 92.7
  - 92.8 - 158.9

**Label Descriptions:**

GN Div. Name  
GND Num., Population

**Ex: Siyambalape South**  
274A, 6127

Place Names  
Daraganama

Note:  
Used 2011/12 data-sets of Administrative Division (District / DSD / GND) Boundaries and Population data sets of Department of Census & Statistics.

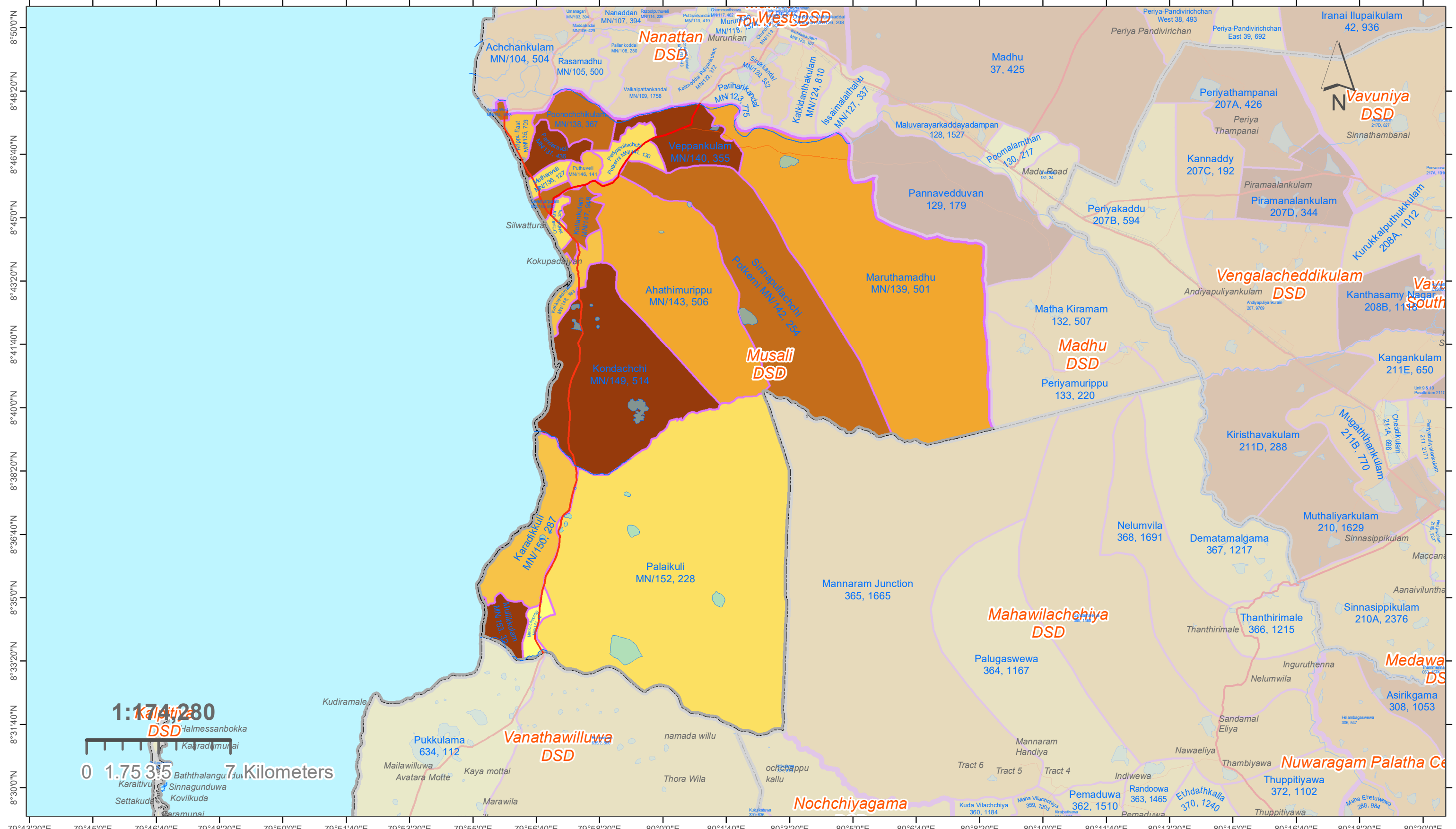
Used 2020 Open Street Map Layers used for Feature Layers (Roads / Places / Water Bodies / Streams).

Software Used: Arc Map of Esri Organisation.

Prepared by the Cartography Division of Department of Census & Statistics.



# MAP 4215 A: GN DIVISIONS OF MUSALI DS DIVISION, MANNAR DISTRICT. (143) OVERLAYED WITH DEPENDANCY RATIO - 2012 (Percentage of Age less than 15 & over 60 Population)



**Legend**

	District Boundaries		Expressways		Water Areas
	DSD Boundaries		Main Roads		Streams / Rivers
<b>GND - Dependency Ratio**</b>					
	0.0 - 29.3		Secondary Roads	**Dependency Ratio = (Persons Aged below 15 years and above 59 years / Persons Aged 15 to 59 years) * 100	
	29.4 - 52.5		Tertiary Roads		
	52.6 - 59.9				
	60.0 - 66.5				
	66.6 - 74.8				
	74.9 - 92.7				
	92.8 - 158.9				

**Label Descriptions:**

GN Div. Name  
GND Num., Population

Place Names

Daranagama

Ex: Siyambalape South  
274A, 6127



**Note:**  
Used 2011/12 data-sets of Administrative Division (District / DSD / GND) Boundaries and Population data sets of Department of Census & Statistics.

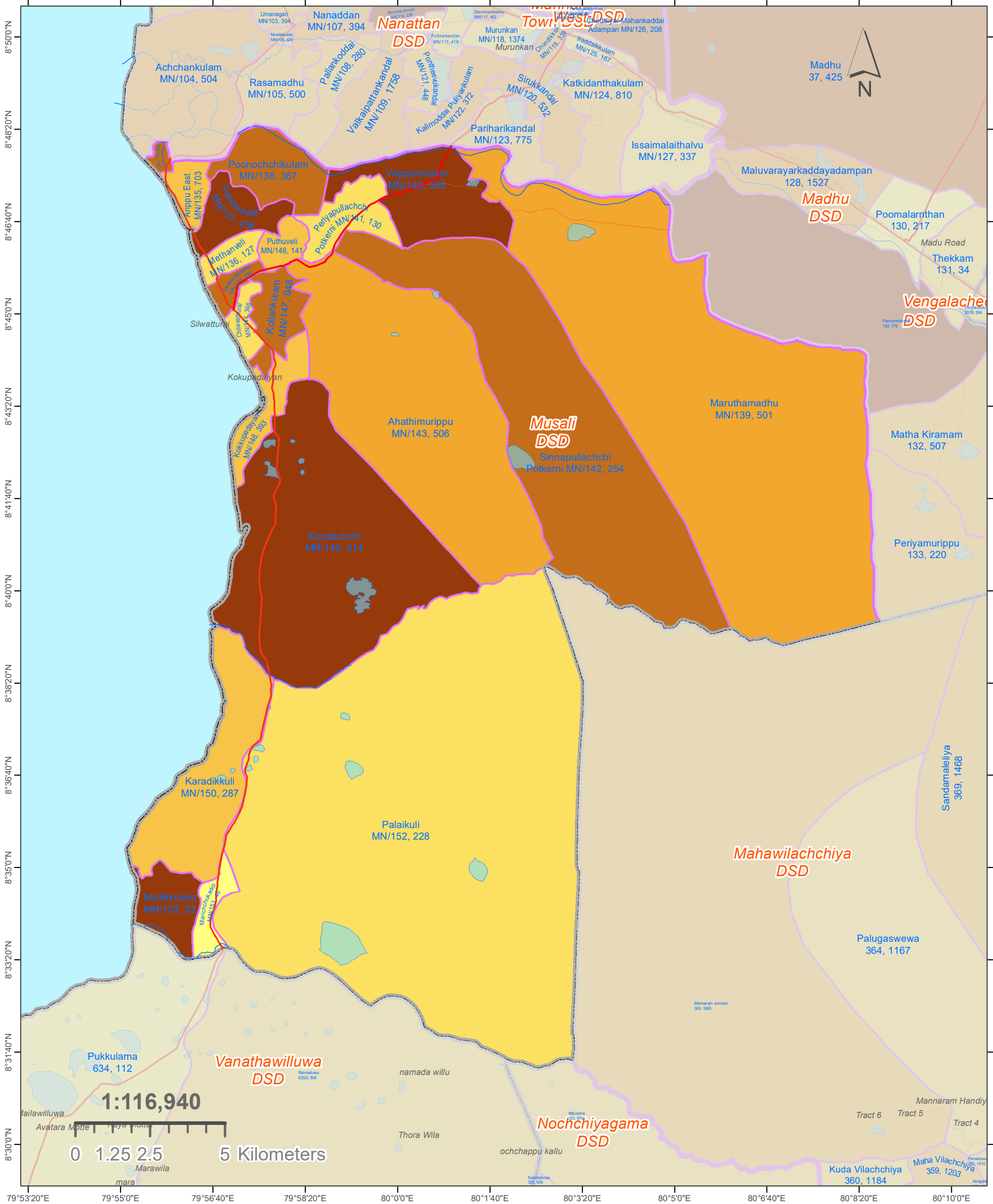
Used 2020 Open Street Map Layers used for Feature Layers (Roads / Places / Water Bodies / Streams).

Software Used: Arc Map of Esri Organisation.

Prepared by the Cartography Division of Department of Census & Statistics.

# MAP 4215 A: GN DIVISIONS OF MUSALI DS DIVISION, MANNAR DISTRICT. (143)

## OVERLAYED WITH DEPENDANCY RATIO - 2012 (Percentage of Age less than 15 & over 60 Population)



	District Boundaries		Water Areas		52.6 - 59.9
	DSD Boundaries		Streams / Rivers		60.0 - 66.5
	Expressways	<b>GND - Dependency Ratio**</b>			66.6 - 74.8
	Main Roads		0.0 - 29.3		74.9 - 92.7
	Secondary Roads		29.4 - 52.5		92.8 - 158.9
	Tertiary Roads	**Dependency Ratio = (Persons Aged below 15 years and above 59 years / Persons Aged 15 to 59 years) * 100			

<b>Label Descriptions:</b>	
	GN Div. Name
	GND Num., Population
	Place Names
	DaranaGama

Ex: Siyambalape South 274A, 6127

Note:  
Used 2011/12 data-sets of Administrative Division (District / DSD / GND) Boundaries and Population data sets of Department of Census & Statistics.

Used 2020 Open Street Map Layers used for Feature Layers (Roads / Places / Water Bodies / Streams ).

Software Used: Arc Map of Esri Organisation.

Prepared by the Cartography Division of Department of Census & Statistics.