

Colombo Consumer Price Index (CCPI)-(BASE 2021=100) May 2026

29-05-2026

Department of Census and Statistics

Ministry of Finance, Planning and Economic Development

The Department of Census and Statistics (DCS) is the authorized agency responsible for compiling the Colombo Consumer Price Index (CCPI). Following internationally accepted guidelines, the base year has been revised from 2013=100 to 2021=100 in order to accommodate changing expenditure patterns and incorporate changes in goods and services available in the market. Accordingly, with the new base year, the CCPI (Base 2021=100) has been released monthly since February 2023 on the last working day of each month. It is emphasized that index numbers or inflation figures compiled under different base years cannot be compared.

The CCPI is compiled to measure the average change in the prices of goods and services purchased by households in urban areas of the Colombo District. Price collection for the index (Base 2021=100) is carried out at 10 price collection centers located in Peliyagoda, Maradana, Wellawatta, Dematagoda, Grandpass, Kirulapone, Nugegoda, and Rathmalana, as well as at two dedicated economic centers, namely Narahenpita and Rathmalana.

Prices are collected weekly from outlets located within each of the above-mentioned market areas, including Sathosa outlets and supermarkets. The consumer basket includes 426 items, representing the typical consumption expenditure of urban households. The CPI weights are derived from the Household Income and Expenditure Survey (HIES) 2019.

- ▣ The CCPI for all items for May 2026 stood at 203.4, recording an increase of 1.8 index points from 201.6 in April 2026.
- ▣ The overall rate of inflation, as measured by the CCPI on a year-on-year (Y-o-Y) basis, stood at 5.5% in May 2026.

Content

[Source Publication](#) For more details on the revision of base year, please click here: [Technical Note on Base Year Revision](#) statistics.gov.lk

1. Variations in Colombo Consumer Price Index

Month-on-month changes in the Colombo Consumer Price Index are briefly described below.

Table 1- Monthly Changes by main Groups of Market Basket

Major Group*	Index Number			Monthly Changes of the Expenditure Values (Rs.)			Monthly Changes of the Index (%) ¹		
	May. 2025	Apr. 2026	May. 2026	May. 2025	Apr. 2026	May. 2026	May. 2025	Apr. 2026	May. 2026
	All Items	192.8	201.6	203.4	1436.59	5380.92	1625.48	0.82	2.99
Food and Non-Alcoholic Beverages	244.8	245.1	247.1	1546.35	1006.80	481.86	0.88	0.56	0.26
Non-Food	174.3	186.2	187.9	-109.76	4374.12	1143.63	-0.06	2.43	0.62
Alcoholic beverages Tobacco and Narcotic	245.6	251.4	253.0	-12.17	33.81	23.85	-0.01	0.02	0.01
Clothing and Foot wear	252.3	261.0	256.5	3.53	12.72	-90.91	0.00	0.01	-0.05
Housing, Water, Electricity, Gas and Other Fuels	132.8	140.1	141.9	-24.75	1012.54	510.10	-0.01	0.56	0.28
Furnishing Household Equipment & Routine Household Maintenance	186.2	191.5	193.4	6.46	12.84	58.54	0.00	0.01	0.03
Health	184.8	191.4	192.6	22.82	26.07	46.13	0.01	0.01	0.02
Transport	223.9	251.7	255.0	-183.31	3147.29	379.85	-0.10	1.75	0.21
Restaurant and Hotels	240.1	263.9	268.6	62.13	643.55	219.73	0.04	0.36	0.12
Other	172.5	180.2	180.2	15.53	-514.70	-3.66	0.01	-0.29	0.00

Note 1: The market basket consists of 12 main groups, of which eight recorded significant changes in May 2026; details are given in Table 2.

Note 2: The monthly percentage change of the index is calculated based on expenditure values.

Note 3: 1 Percentages of items do not tally with the overall percentage due to rounding

1.1 Month on Month (M on M) Change of CCPI:

The CCPI for all items for May 2026 was 203.4, recording an increase of 1.8 index points or 0.88 percent compared to 201.6 in April 2026. This represents an increase in expenditure value of Rs. 1,625.48 in the market basket.

1.1.1 Contribution to M-on-M Changes:

Contributions to the change in the CCPI from April 2026 to May 2026 are presented in Table 02. The month-on-month change was driven by an increase of 0.26% in Food items and an increase of 0.62% in Non-Food items.

1.1.2 Contribution of Food and Non-Alcoholic Beverages items 0.26%

As shown in Table 2, increases were reported for Vegetables (0.27%), Sea Fish (0.22%), Big Onion (0.06%), Dried Fish (0.04%), Limes (0.04%), Yoghurt (0.03%), Chicken (0.02%), Milk Packets (liquid) (0.02%), Red Onion (0.02%), Curd (0.02%), Green Gram (0.01%), Bread (Normal) (0.01%), Cake (0.01%), Cow Milk (0.01%), Soya Meat (0.01%), Ginger (0.01%), and Coffee Powder (0.01%), while decreases were reported for Fresh Fruits (0.17%), Rice (0.10%), Eggs (0.08%), Coconut Oil (0.05%), Coconut (0.04%), Dhal-Mysore (0.03%), Curry Leaves (0.03%), Sugar (0.01%), and Potatoes (0.01%).

1.1.3 Contribution of Non-Food items: 0.62%

Increases in value changes were reported for the groups of 'Housing, Water, Electricity, Gas and Other Fuels' (0.28%), 'Transport' (0.21%), 'Restaurants and Hotels' (0.12%), 'Furnishing Household Equipment and Routine Household Maintenance' (0.03%), 'Health' (0.02%) and 'Alcoholic beverages, Tobacco and Narcotic (0.01%)' while decreases in value changes were reported for the group of 'Clothing & Footwear' (0.05%).

Further, a slight price increase was reported in the group of 'Miscellaneous Goods and Services', while a slight price decrease was reported in the group of 'Recreation and Culture'. Meanwhile, the price indices of the 'Education' and 'Communication' groups remained unchanged during the month.

Table 2: Contribution to the changes in CCPI from April 2026 to May 2026 (Base2021=100)

	Rs.Cts.	Value Change		
		% change		Net effect
		Increase	Decrease	
Food	481.86	0.79	0.53	0.26
1 Rice	-192.15		0.10	
<i>Rice - (Samba)</i>	-180.01		0.10	
2 Green gram	16.04	0.01		
3 Bread (Normal)	16.50	0.01		
4 Cake	12.24	0.01		
5 Chicken	39.19	0.02		
6 Sea Fish	412.91	0.22		
7 Dried Fish	67.04	0.04		
<i>Sprats (dry)</i>	18.21	0.01		
<i>Katta (dry)</i>	47.27	0.03		
8 Milk packets (liquid)	40.23	0.02		
9 Cow milk	16.16	0.01		
10 Yoghurt	60.64	0.03		
11 Curd	28.04	0.02		
12 Eggs	-146.99		0.08	
13 Coconuts	-74.47		0.04	
14 Coconut oil	-96.09		0.05	
15 Fresh Fruits	-310.21		0.17	
<i>Banana - Kolikuttu</i>	-27.11		0.01	
<i>Papaw</i>	-235.20		0.13	
<i>Mangoes</i>	-26.38		0.01	
<i>Pineapple</i>	-10.30		0.01	
16 Vegetables	495.13	0.27		
17 Potatoes	-18.79		0.01	
18 Dhal - Mysore	-56.03		0.03	
19 Red onions	36.66	0.02		
20 Big Onion	115.21	0.06		
21 Soya meat	10.81	0.01		
22 Sugar	-25.52		0.01	
23 Limes	75.05	0.04		
24 Curry leaves	-50.96		0.03	
25 Ginger	9.32	0.01		
26 Coffee powder	15.25	0.01		
27 Others	-13.36		0.01	

Non-Food		1143.63	0.67	0.05	0.62
28	Alcoholic beverages Tobacco and Narcotic	23.85	0.01		
29	Clothing& Footwear	-90.91		0.05	
30	Housing, Water, Electricity, Gas, And Other Fuels	510.10	0.28		
	<i>Materials for Maintenance</i>	52.57	0.03		
	<i>Electricity bill</i>	109.51	0.06		
	<i>L. P. Gas</i>	337.75	0.18		
	<i>Kerosene oil</i>	10.28	0.01		
31	Furnishing Household Equipment & Routine Household Maintenance	58.54	0.03		
32	Health	46.13	0.02		
	<i>Consultation fees to specialists</i>	45.76	0.02		
33	Transport	379.85	0.21		
	<i>Petrol</i>	214.47	0.12		
	<i>Diesel</i>	23.88	0.01		
	<i>Lubricating oil</i>	37.06	0.02		
	<i>Cost of servicing of vehicles</i>	93.82	0.05		
34	Restaurant and Hotels	219.73	0.12		
35	Others	-3.66		0.00	
All Items		1625.48	1.46	0.58	0.88

*Percentages of items do not tally with overall percentage due to rounding off.

2. Inflation

The CCPI is an economic indicator constructed to measure inflation, which is defined as the percentage change in the CCPI over a period of time. There are two commonly used measures of inflation. One measure is Year-on-Year (Y-o-Y) or Point-to-Point inflation, which is the percentage change in the CCPI over the previous 12 months. The other measure is Moving Average Inflation, which is the percentage difference between the average CCPI of the latest 12 months and the average CCPI of the preceding 12 months.

Table 03: Movements of the CCPI (Base: 2021=100)

Year	Month	All Item				Food				Non-Food				
		Index Number	% Change Month on Month	Inflation %		Index Number	% Change Month on Month	Inflation %		Index Number	% Change Month on Month	Inflation %		
				Y on Y	12 Month Moving Avg.			Y on Y	12 Month Moving Avg.			Y on Y	12 Month Moving Avg.	
2025	May	192.8	0.8	-0.7	-1.2	244.8	2.7	5.2	0.8	174.3	-0.1	-3.3	-2.1	
	June	194.5	0.9	-0.6	-1.4	249.3	1.8	4.3	1.1	175.0	0.4	-2.8	-2.5	
	July	194.1	-0.2	-0.3	-1.6	243.0	-2.5	1.5	1.1	176.7	1.0	-1.2	-2.8	
	August	193.3	-0.4	1.2	-1.5	239.4	-1.5	2.0	1.2	177.0	0.2	0.8	-2.8	
	September	193.7	0.2	1.5	-1.4	240.1	0.3	2.9	1.4	177.1	0.1	0.7	-2.7	
	October	193.8	0.1	2.1	-1.2	240.0	0.0	3.5	1.6	177.4	0.2	1.4	-2.5	
	November	193.4	-0.2	2.1	-0.8	238.6	-0.6	3.0	1.8	177.3	-0.1	1.7	-2.1	
	December	195.8	1.2	2.1	-0.5	247.9	3.9	3.0	2.0	177.3	0.0	1.8	-1.7	
	2026	January	197.0	0.6	2.3	0.0	249.4	0.6	3.3	2.5	178.3	0.6	1.8	-1.1
		February	195.3	-0.9	1.6	0.5	242.9	-2.6	0.2	2.6	178.3	0.0	2.3	-0.4
		March	195.8	0.3	2.2	0.9	240.9	-0.8	0.7	2.6	179.7	0.8	2.9	0.2
		April	201.6	3.0	5.4	1.6	245.1	1.7	2.8	2.7	186.2	3.6	6.8	1.0
May		203.4	0.9	5.5	2.1	247.1	0.8	0.9	2.3	187.9	0.9	7.8	2.0	

Note: Year on Year inflation, 12 Month Moving Average inflation and Month on Month change were calculated using the rounding off index numbers

2.1 Year on Year (Y-on-Y) Inflation

The overall rate of inflation, as measured by the CCPI on a year-on-year (Y-o-Y) basis, stood at 5.5% in May 2026, compared to 5.4% in April 2026 (Table 03). The Y-o-Y inflation of the Food Group decreased to 0.9% in May 2026 from 2.8% in April 2026, while the Y-o-Y inflation of the Non-Food Group increased to 7.8% in May 2026 from 6.8% in April 2026.

2.2 Contribution to Y-on-Y inflation:

For the month of May 2026, on Y-on-Y basis, contribution to inflation by food commodities was 0.31%.

The contribution of Non-Food items was 5.20%. This was mainly due to price increases in the groups of 'Transport' (2.02%), 'Housing, Water, Electricity, Gas and Other Fuels' (1.49%), 'Restaurants and Hotels' (0.76%), 'Education' (0.31%), 'Miscellaneous Goods and Services' (0.19%), 'Health' (0.16%), 'Furnishing Household Equipment and Routine Household Maintenance' (0.13%), 'Alcoholic Beverages Tobacco and Narcotics' (0.06%), 'Clothing and Footwear' (0.05%) and 'Communication' (0.02%).

Further, a slight price increase was reported in the group of 'Recreation and Culture'.

Table 04: Contribution to the changes in CCPI (Base 2021=100) year on year basis May 2026 as compared to May 2025

Sub Group/Commodity	Value Change	Increase	Decrease	Net effect
	Rs.Cts.	%	%	%
FOOD AND NON-ALCOHOLIC BEVERAGES	553.35			0.31
Rice	-139.67		0.08	
Rice flour	37.90	0.02		
Wheat flour	12.35	0.01		
Ulundu flour	-14.68		0.01	
Green gram	20.64	0.01		
Gram	-11.79		0.01	
Cowpea	14.23	0.01		
Bread (Normal)	39.28	0.02		
Buns	20.08	0.01		
Cake	12.24	0.01		
Bread (Special)	10.82	0.01		
Noodles	-27.61		0.02	
Chicken	470.69	0.27		
Beef	28.74	0.02		
Pork	50.23	0.03		
Mutton	19.34	0.01		
Sea fish	556.43	0.31		

Prawns	19.70	0.01	
Dried Fish	454.73	0.26	
Canned fish	26.57	0.02	
Maldives fish	30.26	0.02	
Milk packets (liquid)	52.46	0.03	
Cow milk	19.85	0.01	
Milk powder	349.51	0.20	
Infant milk powder	40.41	0.02	
Yoghurt	79.55	0.04	
Curd	34.18	0.02	
Eggs	74.11	0.04	
Coconuts	-952.68		0.54
Butter	-12.37		0.01
Margarine	17.20	0.01	
Coconut oil	52.96	0.03	
Cadju nuts & Groundnuts	21.16	0.01	
FRESH FRUITS	145.81	0.08	
Vegetable	-842.40		0.48
Potatoes	-83.01		0.05
Dhal Mysoor	21.46	0.01	
Big Onions	291.79	0.16	
Garlic	-46.82		0.03
Sugar	-38.29		0.02
Ice-cream	33.51	0.02	
Juggery	-14.75		0.01
Chili powder	84.85	0.05	
Pepper powder	19.40	0.01	
Dried chillies	161.08	0.09	
Curry powder	34.77	0.02	
Salt	-209.11		0.12
Turmeric powder	-55.02		0.03
Limes	38.29	0.02	
Curry leaves	-51.00		0.03
Cinnamon	15.28	0.01	
Tamarind	-115.13		0.06
Cumin & Panel seeds	-12.61		0.01
Ginger	-173.02		0.10
Coffee powder	40.23	0.02	
Tea dust/ leaves	-72.16		0.04
Soft drinks	38.86	0.02	
Fruit drinks/ Cordials	-75.58		0.04

NON-FOOD	9205.58	5.20	0.00	5.20
Alcoholic beverages Tobacco and Narcotic	113.60	0.06		
Clothing and Foot Wear	85.73	0.05		
<i>Clothing</i>	<i>76.28</i>	<i>0.04</i>		
<i>Footwear</i>	<i>9.46</i>	<i>0.01</i>		
Housing, Water, Electricity, Gas and Other Fuels	2634.12	1.49		
<i>Housing rent</i>	<i>564.47</i>	<i>0.32</i>		
<i>Materials for Maintenance</i>	<i>83.75</i>	<i>0.05</i>		
<i>Electricity bill</i>	<i>1022.05</i>	<i>0.58</i>		
<i>L. P. Gas</i>	<i>853.55</i>	<i>0.48</i>		
<i>Kerosene oil</i>	<i>110.30</i>	<i>0.06</i>		
Furnishing Household Equipment and Routine Household Maintenance	228.50	0.13		
<i>Washing powder</i>	<i>-25.86</i>		<i>0.01</i>	
<i>Wages to servants</i>	<i>174.33</i>	<i>0.10</i>		
Health	287.96	0.16		
<i>Fees to private medical practices</i>	<i>159.19</i>	<i>0.09</i>		
<i>Consultation fees to specialists</i>	<i>82.39</i>	<i>0.05</i>		
<i>Fees to Aurvadic practitioners</i>	<i>10.38</i>	<i>0.01</i>		
<i>Payments. to medical laboratories</i>	<i>16.30</i>	<i>0.01</i>		
<i>Scan (US,CT etc.)</i>	<i>9.49</i>	<i>0.01</i>		
<i>Payments to private hospitals</i>	<i>14.20</i>	<i>0.01</i>		
Transport	3582.60	2.02		
<i>Petrol</i>	<i>348.27</i>	<i>0.20</i>		
<i>Diesel</i>	<i>67.69</i>	<i>0.04</i>		
<i>Lubricating oil</i>	<i>218.45</i>	<i>0.12</i>		
<i>Cost of servicing of vehicles</i>	<i>211.62</i>	<i>0.12</i>		
<i>Bus fare</i>	<i>17.81</i>	<i>0.01</i>		
<i>Van fare (other than schooling)</i>	<i>59.66</i>	<i>0.03</i>		
<i>Three wheelers fare (other than schooling)</i>	<i>31.89</i>	<i>0.02</i>		
<i>Transport for schooling/ preschooling</i>	<i>31.87</i>	<i>0.02</i>		
<i>Air lines fare</i>	<i>27.64</i>	<i>0.02</i>		
Communication	33.23	0.02		
<i>Telephones</i>	<i>24.99</i>	<i>0.01</i>		
Education	555.12	0.31		
<i>Pre-school fees (K.G)</i>	<i>29.14</i>	<i>0.02</i>		
<i>Primary School fees (International)</i>	<i>57.38</i>	<i>0.03</i>		
<i>Tuition fees</i>	<i>125.57</i>	<i>0.07</i>		
<i>Secondary school fees (International)</i>	<i>160.82</i>	<i>0.09</i>		
<i>Course fees (Higher education)</i>	<i>161.37</i>	<i>0.09</i>		

Course fees vocational training	20.84	0.01
Restaurant and hotels	1341.08	0.76
Miscellaneous Goods and Services	338.73	0.19
Hair cutting and shaving charges	54.40	0.03
Hair dressing and Beauty culture services	16.93	0.01
Hand bags	60.63	0.03
Agrahara Insurance	203.49	0.11
Other	4.90	0.00
All Items	9758.93	5.5

*Percentages of items do not tally with overall percentage due to rounding off.

Movements in the CCPI (Base 2021=100) for Head Line, Food, Non-Food and Year on Year Inflation

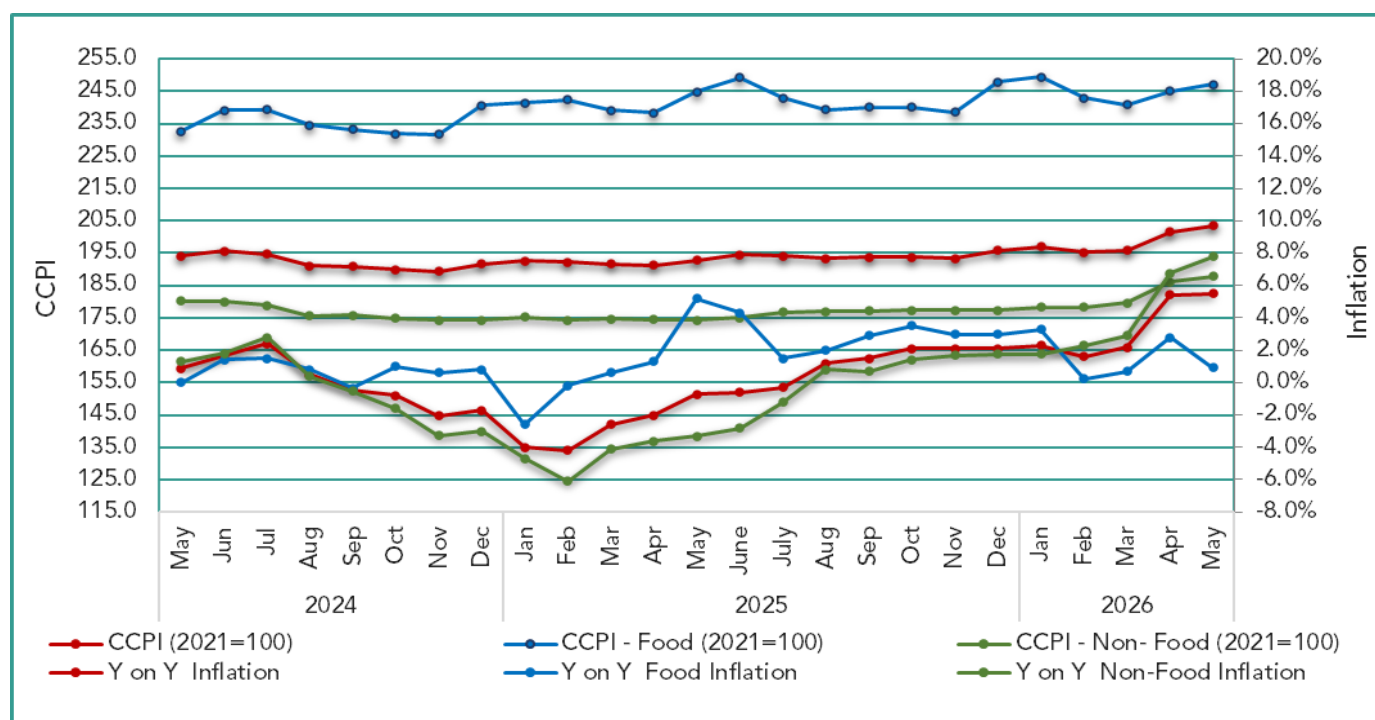


Table 05: Monthly average open market retail prices of selected items of Colombo Consumer Price Index May 2025, April 2026 & May 2026

Item	Unit	Retail Prices (Rs. Cts)			Retail Price Changes (%)	
		2025 May	2026 Apr.	2026 May	May 26/ May 25	May 26/ Apr. 26
1. Rice- Kekulu – Red	Kg	222.94	204.99	203.86	-0.08	-0.01
2. Rice- Kekulu – White	Kg	220.22	217.32	216.81	-0.02	-0.01
3. Rice –Nadu - White	Kg	231.74	229.01	228.67	0.00	0.00
4. Rice –Nadu - Red	Kg	241.12	235.09	235.63	-0.07	0.00
5. Rice– Samba	Kg	249.01	275.10	252.83	0.07	0.06
6. Cowpea	Kg	819.56	935.51	903.95	0.14	-0.03


7.Green Grams	Kg	873.60	889.44	944.74	0.00	0.00
8. Coconut	Each	211.24	170.40	166.94	-0.19	-0.04
9. Coconut Oil	750ml	683.21	749.26	706.68	0.11	0.02
10.Chicken	Kg	1137.76	1325.66	1342.73	0.12	0.05
11. Eggs	Each	29.32	40.68	33.13	0.18	0.07
12. Red Onion	Kg	433.41	379.57	427.02	-0.19	-0.13
13. Big Onion	Kg	139.29	189.28	221.89	-0.02	-0.10
14. Potatoes	Kg	306.92	276.89	268.11	-0.08	0.03
15. Garlic	Kg	619.80	548.44	537.17	-0.17	-0.01
16. Dried Chilies	Kg	791.40	1125.70	1132.73	0.26	0.02
17. Green Chilies	Kg	582.80	574.72	571.35	-0.59	-0.24
18. Sugar	Kg	236.40	232.95	226.05	-0.07	0.02
19. Pepper	Kg	2751.15	2843.75	2857.56	0.04	0.00
Vegetables-						
20. Ash Plantain	Kg	257.63	293.42	277.08	0.01	-0.13
21. Carrot	Kg	779.25	452.64	435.18	-0.50	-0.02
22. Snake Gourd	Kg	491.02	356.39	457.09	-0.04	-0.11
23. Tomatoes	Kg	934.87	245.27	398.77	-0.23	-0.33
24. Capsicum	Kg	987.33	484.00	535.47	-0.38	-0.34
25. Beetroot	Kg	672.79	323.40	360.72	0.02	-0.31
26. Beans	Kg	633.52	518.25	694.54	0.03	-0.03
Fruits						
27. Banana	Kg	262.91	249.33	268.19	0.02	0.08
28. Papaw	Kg	196.07	340.71	236.13	0.17	-0.08
29. Mangoes	Each	332.51	195.06	174.38	-0.19	0.28
Fresh Fish –						
30. Seer	Kg	3431.09	3728.02	3853.36	0.38	-0.01
31.Talapath	Kg	2774.61	2676.96	2790.75	0.17	-0.03
32.Paraw	Kg	2288.19	2621.63	2869.27	0.24	-0.03
Dried Fish -						
33.Katta	Kg	2500.85	2840.20	3022.22	0.11	0.03
34. Sprats	Kg	1030.84	1514.94	1548.55	0.27	0.05
Fuel -						
35. Kerosene Oil	Lt	178.54	255.00	262.86	0.16	0.16
36. Petrol (CPC & IOC)	Lt	293.64	398.00	407.43	-0.01	0.05
37. Diesel (CPC & IOC)	Lt	275.29	382.00	389.86	0.03	0.06
38. Gas- Avg.	12.5kg	3792.50	4574.38	5086.34	0.12	0.04
Litro	12.5kg	3690.00	4377.50	4765.00	0.29	0.09
Laughs	12.5kg	4100.00	5165.00	6050.36	0.48	0.17




The Vision of DCS

"To be the leader in the region in producing timely statistical information to achieve the country's development goals."

The Mission of DCS

"Making contribution in the socioeconomic development of the country by providing accurate timely statistics, more Effectively by means of new technology, and utilising the services of dedicated staff under a strategic leadership to become a prosperous nation in the globalised environment."

 Department of Census & Statistics,
Sankyana Mandiraya
No. 306/71, Polduwa
Road,Battaramulla

 information@statistics.gov.lk
 +94 11 2147000
 +94 11 2147011
 statistics.gov.lk

This publication is produced by the Prices and Wages Division
 5th floor, Department of Census and Statistics
 prices@statistics.gov.lk
 +94 11 2147414  +94 11 2147444