

# Colombo Consumer Price Index (CCPI)-(BASE 2021=100) March 2026

31-03-2026

Department of Census and Statistics

Ministry of Finance, Planning and Economic Development

The Department of Census and Statistics (DCS) is the authorized agency to compile the Colombo Consumer Price Index (CCPI). Following internationally accepted guidelines, it has been arranged to revise the base year from 2013=100 to 2021=100 in order to accommodate the changing expenditure patterns and incorporate changes of goods and services available in the market. Accordingly, with respect to the new base, CCPI (Base 2021=100) will be released monthly commencing from February 2023 on the last working day of each month. It is emphasized that index numbers or inflation figures compiled under different base years cannot be compared.

The CCPI is compiled to indicate average changes in the prices of goods and services purchased by households in urban areas of Colombo District. The price collection of the index (Base 2021=100) covers 10 price collection centers in Peliyagoda, Maradana, Wellawatta, Dematagoda, Grandpass, Kirulapone, Nugegoda, Rathmalana, and two Dedicated Economic Centers, namely Narahenpita and Rathmalana.

Prices are collected weekly from the outlets located within each of the above market areas including Sathosa and a supermarket. The consumer basket includes 426 items, which represent the typical urban household consumption expenditure. The CPI weights are derived from the Household Income and Expenditure Survey (HIES) 2019.

- ▮ The CCPI for all items for the month of March 2026 is 195.8 and it records an increase of 0.5 index points compared to February 2026, for which the index was 195.3.
- ▮ The overall rate of inflation as measured by the CCPI on Y-on-Y basis is 2.2% in March 2026.

## Content

[Source Publication](#) For more details on the revision of base year, please click here: [Technical Note on Base Year Revision](#)

## 1. Variations in Colombo Consumer Price Index

Month on month changes in the Colombo Consumer Price Index is briefly described below.

**Table 1- Monthly Changes by main Groups of Market Basket**

Major Group*	Monthly Changes of the						Monthly Changes		
	Index Number			Expenditure Values (Rs.)			of the Index (%) <sup>1</sup>		
	Mar.	Feb.	Mar.	Mar.	Feb.	Mar.	Mar.	Feb.	Mar.
	2025	2026	2026	2025	2026	2026	2025	2026	2026
All Items	191.6	195.3	195.8	-542.77	-1538.34	451.99	-0.31	-0.85	0.25
Food and Non Alcoholic Beverages	239.2	242.9	240.9	-750.97	-1563.47	-487.27	-0.43	-0.86	-0.27
Non Food	174.6	178.3	179.7	208.20	25.13	939.26	0.12	0.01	0.52
Alcoholic Beverages, Tobacco and Narcotics	247.1	249.2	248.2	45.49	-1.24	-16.01	0.03	0.00	-0.01
Housing, Water, Electricity, Gas and Other Fuels	132.6	136.6	137.0	115.12	10.94	128.92	0.07	0.01	0.07
Transport	226.9	224.4	228.8	-2.33	-42.98	506.81	0.00	-0.02	0.28
Education	182.3	189.4	191.4	0.00	0.00	92.19	0.00	0.00	0.05
Restaurant and Hotels	238.8	250.2	250.5	0.00	20.63	10.11	0.00	0.01	0.01
Miscellaneous Goods and Services	195.6	200.4	207.3	13.92	2.94	203.85	0.01	0.00	0.11
Other	182.6	187.0	187.1	35.98	34.84	13.39	0.02	0.02	0.01

Note 1 : There are 12 main groups of the market basket. Significant changes in March 2026 were noted in seven groups, details on which are given in Table 2.

Note 2: Monthly change of the index (%) is calculated using expenditure values.

Note 3:<sup>1</sup> Percentage of items does not tally with overall percentage due to rounding off.

### 1.1 Month on Month (M on M) Change of CCPI:

The CCPI for all items for the month of March 2026 was 195.8 and it recorded an increase of 0.5 index points or 0.25 percent compared to February 2026 for which the index was 195.3. This represents an increase in expenditure value by Rs 451.99 in the "Market Basket".

#### 1.1.1 Contribution to M on M Changes:

Contributions to the change in CCPI from February 2026 to March 2026 are presented in Table 02. The month-on-month change was contributed by a decrease in Food items by 0.27% and an increase in Non Food items by 0.52%.

#### 1.1.2 Contribution of Food and Non-Alcoholic Beverages items: -0.27%

As shown in Table 02, decreases in value change were reported for Vegetables (0.21%), Sea Fish (0.09%), Coconuts (0.08%), Green Chillies (0.06%), Big Onions (0.04%), Red Onions (0.02%), Turmeric Powder (0.02%), Limes (0.01%), Fresh Fruits (0.01%) and Ginger (0.01%).

While increases in value change were reported for Chicken (0.08%), Rice (0.05%), Dried Fish (0.03%), Eggs (0.03%), Coconut Oil (0.02%), Chilli Powder (0.01%), Sugar (0.01%), Potatoes (0.01%), Beef (0.01%), Dried Chillies (0.01%), Mysore Dhal (0.01%), Maldives Fish (0.01%) and Tea Dust (0.01%).

### 1.1.3 Contribution of Non-Food items: 0.52%

Increases in value change were reported for the groups of 'Transport' (0.28%), 'Miscellaneous Goods and Services' (0.11%), 'Housing, Water, 'Electricity', Gas and Other Fuels' (0.07%), Education (0.05%) and 'Restaurants and Hotels' (0.01%). While a decrease in value change was reported for the group of 'Alcoholic Beverages Tobacco and Narcotic' (0.01%).

Further, slight price increases were reported in the groups of 'Clothing and Footwear', 'Furnishing Household Equipment and Routine Household Maintenance' and 'Health', while a slight price decrease was reported in the group of 'Recreation and Culture'. Meanwhile, the price index of 'Communication' group remained unchanged during the month.

**Table 02: Contribution to the changes in CCPI from February 2026 to March 2026  
(Base2021=100)**

Food	Rs.Cts.	Value Change		Net effect
		% change		
		Increase	Decrease	
	<b>-487.27</b>	<b>0.27</b>	<b>0.54</b>	<b>-0.27</b>
1 Rice	93.08	0.05		
<i>Rice - (Kekulu white)</i>	-11.45		0.01	
<i>Rice - (Kekulu - red)</i>	-9.50		0.01	
<i>Rice - (Samba)</i>	114.89	0.06		
2 Chicken	135.23	0.08		
3 Beef	11.96	0.01		
4 Sea Fish	-158.85		0.09	
5 Dried Fish	62.42	0.03		
<i>Sprats (dry)</i>	36.54	0.02		
<i>Katta (dry)</i>	19.13	0.01		
6 Maldives fish	9.39	0.01		
7 Eggs	49.20	0.03		
8 Coconuts	-146.10		0.08	
9 Coconut oil	29.09	0.02		
10 Fresh Fruits	-15.91		0.01	
<i>Banana</i>	31.22	0.02		
<i>Papaw</i>	-88.76		0.05	
<i>Apple</i>	13.24	0.01		
<i>Mangoes</i>	65.57	0.04		
<i>Pineapple</i>	9.88	0.01		
<i>Water Melon</i>	-51.18		0.03	
11 Vegetables	-368.73		0.21	
12 Potatoes	15.84	0.01		
13 Mysore Dhal	10.30	0.01		
14 Red onions	-42.51		0.02	
15 Big Onion	-70.27		0.04	
16 Green chilies	-99.99		0.06	
17 Sugar	17.59	0.01		
18 Chilli Powder	23.16	0.01		
19 Dried chilies	11.64	0.01		
20 Turmeric powder	-35.99		0.02	
21 Limes	-19.42		0.01	
22 Ginger	-10.49		0.01	
23 Tea Dust	9.36	0.01		
24 Others	2.72	0.00		

<b>Non Food</b>	<b>939.26</b>	<b>0.53</b>	<b>0.01</b>	<b>0.52</b>
25 Alcoholic Beverages Tobacco and Narcotic	-16.01		0.01	
26 Housing, Water, Electricity, Gas and Other Fuels	128.92	0.07		
<i>L. P. Gas</i>	90.47	0.05		
<i>Kerosene oil</i>	38.45	0.02		
27 Transport	506.81	0.28		
<i>Petrol and other fuel</i>	327.40	0.18		
<i>Diesel</i>	47.88	0.03		
<i>Cost of servicing of vehicles</i>	16.64	0.01		
<i>Van (other than schooling)</i>	15.30	0.01		
<i>Air lines</i>	97.81	0.05		
28 Education	92.19	0.05		
<i>Tuition fees (Secondary Education)</i>	92.19	0.05		
29 Restaurant and Hotels	10.11	0.01		
30 Miscellaneous Goods and Services	203.85	0.11		
<i>Insurance/ Aghara</i>	203.49	0.11		
31 Others	13.39	0.01		
<b>All Items</b>	<b>451.99</b>	<b>0.80</b>	<b>0.55</b>	<b>0.25</b>

\*Percentages of items do not tally with overall percentage due to rounding off.

## 2. Inflation

The CCPI is an economic indicator constructed to measure inflation which is defined as the percentage change in CCPI over the year. There are two measures of inflation in general use. One measure is Year on Year base or Point to Point inflation (The percentage change in the CCPI during the last 12 months). The other measure is Moving Average Inflation (The percentage difference between the average Price Index of last 12 months and the average Price Index of previous 12 months).

**Table 03: Movements of the CCPI (Base: 2021=100)**

Year	Month	All Item				Food				Non Food				
		Index Number	% Change Month on Month	Inflation %		Index Number	% Change Month on Month	Inflation %		Index Number	% Change Month on Month	Inflation %		
				Y on Y	12 Month Moving Avg.			Y on Y	12 Month Moving Avg.			Y on Y	12 Month Moving Avg.	
2025	March	191.6	-0.3	-2.6	-0.8	239.2	-1.3	0.6	0.5	174.6	0.2	-4.1	-1.4	
	April	191.2	-0.2	-2.0	-1.1	238.4	-0.3	1.3	0.4	174.4	-0.1	-3.6	-1.8	
	May	192.8	0.8	-0.7	-1.2	244.8	2.7	5.2	0.8	174.3	-0.1	-3.3	-2.1	
	June	194.5	0.9	-0.6	-1.4	249.3	1.8	4.3	1.1	175.0	0.4	-2.8	-2.5	
	July	194.1	-0.2	-0.3	-1.6	243.0	-2.5	1.5	1.1	176.7	1.0	-1.2	-2.8	
	August	193.3	-0.4	1.2	-1.5	239.4	-1.5	2.0	1.2	177.0	0.2	0.8	-2.8	
	September	193.7	0.2	1.5	-1.4	240.1	0.3	2.9	1.4	177.1	0.1	0.7	-2.7	
	October	193.8	0.1	2.1	-1.2	240.0	0.0	3.5	1.6	177.4	0.2	1.4	-2.5	
	November	193.4	-0.2	2.1	-0.8	238.6	-0.6	3.0	1.8	177.3	-0.1	1.7	-2.1	
	December	195.8	1.2	2.1	-0.5	247.9	3.9	3.0	2.0	177.3	0.0	1.8	-1.7	
	2026	January	197.0	0.6	2.3	0.0	249.4	0.6	3.3	2.5	178.3	0.6	1.8	-1.1
		February	195.3	-0.9	1.6	0.5	242.9	-2.6	0.2	2.6	178.3	0.0	2.3	-0.4
March		195.8	0.3	2.2	0.9	240.9	-0.8	0.7	2.6	179.7	0.8	2.9	0.2	

Note: Year on Year inflation, 12 Month Moving Average inflation and Month on Month change were calculated using the rounding off index numbers

## 2.1 Year on Year (Y-on-Y) Inflation

The overall rate of inflation as measured by the CCPI on Y-on-Y basis is 2.2% in March 2026 and Y-on-Y inflation calculated for the month of February 2026 was 1.6% (Table 03). The Y-on-Y inflation of Food Group increased to 0.7% in March 2026 from 0.2% in February 2026 and the Y-on-Y inflation of Non Food Group increased to 2.9% in March 2026 from 2.3% in February 2026.

## 2.2 Contribution to Y on Y inflation:

For the month of March 2026, on Y-on-Y basis, contribution to inflation by food commodities was 0.23%.

The contribution of Non Food items was 1.97%. This was mainly due to price increases in the groups of 'Housing, Water, Electricity, Gas and Other Fuels' (0.74%), 'Restaurants and Hotels' (0.31%), 'Education' (0.24%), 'Miscellaneous Goods and Services' (0.19%), 'Health' (0.14%), 'Transport' (0.13%), 'Clothing and Footwear' (0.11%), 'Furnishing Household Equipment and Routine Household Maintenance' (0.06%), 'Communication' (0.02%), 'Recreation and Culture' (0.01%) and 'Alcoholic Beverages Tobacco and Narcotics' (0.01%).

**Table 04: Contribution to the changes in CCPI (Base 2021=100) year on year basis March 2026 as compared to March 2025**

Sub Group/Commodity	Value	Increase	Decrease	Net
	Rs.Cts.	%	%	%
<b>FOOD AND NON ALCOHOLIC BEVERAGES</b>	<b>407.42</b>			<b>0.23</b>
Rice	-24.43		0.01	
Chicken	302.37	0.17		
Pork	61.85	0.04		
Sea fish	1212.26	0.69		
Dried Fish	270.95	0.15		
Milk powder	407.76	0.23		
Infant milk powder	-60.61		0.03	
Yoghurt	-79.55		0.05	
Eggs	111.97	0.06		
Coconuts	-846.63		0.48	
Coconut oil	145.71	0.08		
Vegetable	-511.17		0.29	
Potatoes	-50.18		0.03	
Dhal Mysoor	-72.13		0.04	
Red onions	-66.13		0.04	
Garlic	-63.63		0.04	
Green chilies	-454.37		0.26	
Sugar	-62.51		0.04	
Chilli powder	28.42	0.02		
Dried chilies	104.24	0.06		
Salt	-46.16		0.03	
Tamarind	-88.66		0.05	
Ginger	-92.9		0.05	

<b>NON FOOD</b>	<b>3463.23</b>	<b>1.97</b>	<b>0.00</b>	<b>1.97</b>
Alcoholic beverages Tobacco and Narcotic	16.96	0.01		
Clothing and Foot Wear	190.45	0.11		
<i>Clothing</i>	181.43	0.10		
<i>Footwear</i>	9.02	0.01		
Housing, Water, Electricity, Gas and Other Fuels	1298.13	0.74		
<i>Housing rent</i>	564.47	0.32		
<i>Material for construction</i>	-176.87		0.1	
<i>Electricity bill</i>	681.37	0.39		
<i>L. P. Gas</i>	192.02	0.11		
<i>Kerosene oil</i>	37.14	0.02		
Furnishing Household Equipment and Routine	112.76	0.06		
<i>Energy saving bulbs</i>	-81.79		0.05	
<i>Washing powder</i>	-41.38		0.02	
<i>Wages to servants</i>	167.94	0.10		
Health	248.83	0.14		
<i>Fees to private medical practices</i>	159.19	0.09		
<i>Consultation fees to specialists</i>	46.76	0.03		
<i>Fees to Aurvadic practitioners</i>	10.38	0.01		
<i>Scan CT</i>	9.86	0.01		
<i>Payments to private hospitals</i>	15.15	0.01		
Transport	221.4	0.13		
<i>Petrol</i>	-49.56		0.03	
<i>Diesel</i>	21.82	0.01		
<i>Cost of servicing of vehicles</i>	124.62	0.07		
<i>Vehicle maintenance expenses (Repair charges)</i>	15.64	0.01		
<i>Bus fare</i>	-9.92		0.01	
<i>Van (other than schooling)</i>	29.16	0.02		
<i>Transport for schooling/ pre schooling</i>	31.89	0.02		
<i>Air lines</i>	48.5	0.03		
Communication	33.23	0.02		
<i>Telephones</i>	24.99	0.01		
Recreation and Culture	23.26	0.01		
Education	425.45	0.24		
<i>Pre-school fees (K.G)</i>	29.14	0.02		
<i>Tuition fees</i>	125.57	0.07		
<i>School fees (International)</i>	218.2	0.12		
<i>Course fees (Higher education)</i>	31.7	0.02		
<i>Course fees vocational training</i>	20.84	0.01		
Restaurant and hotels	550.04	0.31		
Miscellaneous Goods and Services	342.72	0.19		
<i>Hair cutting and shaving charges</i>	54.4	0.03		
<i>Hair dressing and Beauty culture services</i>	16.93	0.01		
<i>Hand bags/ Traveling bags</i>	63.24	0.04		
<i>Insurance/ Agrahara</i>	203.49	0.12		
<b>All Items</b>	<b>3870.65</b>			<b>2.2</b>

\*Percentages of items do not tally with overall percentage due to rounding off.

Movements in the CCPI (Base 2021=100) for Head Line, Food, Non Food and Year on Year Inflation

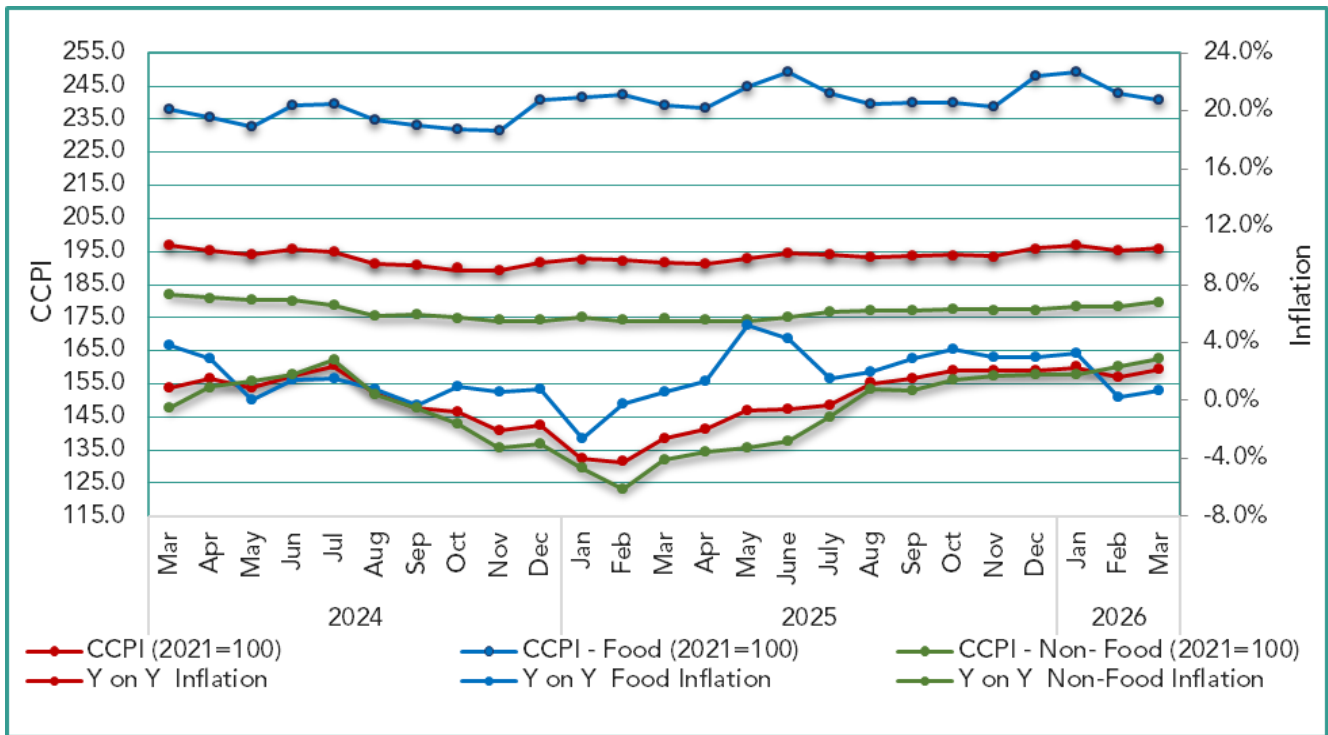


Table 05: Monthly average open market retail prices of selected items of Colombo Consumer Price Index March 2025, February 2026 & March 2026

Item	Unit	Retail Prices (Rs. Cts)			Retail Price Changes (%)	
		2025 Mar.	2026 Feb.	2026 Mar.	Mar. 26/ Mar. 25	Mar. 26/ Feb. 26
1. Rice - Kekulu - Red	Kg	225.93	209.85	208.42	-0.08	-0.01
2. Rice - Kekulu - White	Kg	221.11	217.85	216.19	-0.02	-0.01
3. Rice - Nadu - White	Kg	229.66	229.79	229.66	0.00	0.00
4. Rice - Nadu - Red	Kg	253.64	236.38	236.11	-0.07	0.00
5. Rice - Samba	Kg	246.18	249.66	263.88	0.07	0.06
6. Cowpea	Kg	820.73	961.61	932.67	0.14	-0.03
7. Green Grams	Kg	794.23	796.29	795.79	0.00	0.00
8. Coconut	Each	209.93	177.35	170.56	-0.19	-0.04
9. Coconut Oil	750ml	603.02	654.70	667.59	0.11	0.02
10. Chicken	Kg	1138.82	1211.60	1270.49	0.12	0.05
11. Eggs	Each	31.24	34.46	36.99	0.18	0.07
12. Red Onion	Kg	456.65	426.09	371.06	-0.19	-0.13
13. Big Onion	Kg	188.62	204.96	185.07	-0.02	-0.10
14. Potatoes	Kg	300.73	269.87	277.27	-0.08	0.03
15. Garlic	Kg	661.41	552.37	549.12	-0.17	-0.01
16. Dried Chillies	Kg	843.07	1039.29	1063.96	0.26	0.02
17. Green Chillies	Kg	1376.21	740.69	561.38	-0.59	-0.24
18. Sugar	Kg	242.13	220.48	225.23	-0.07	0.02
19. Pepper	Kg	2729.62	2835.25	2838.28	0.04	0.00
<b>Vegetables</b>						
20. Ash Plantain	Kg	289.99	336.86	292.69	0.01	-0.13
21. Carrot	Kg	846.49	433.96	425.81	-0.50	-0.02
22. Snake Gourd	Kg	372.08	401.76	358.67	-0.04	-0.11
23. Tomatoes	Kg	333.28	381.19	255.82	-0.23	-0.33


24. Capsicum	Kg	963.72	908.00	601.16	-0.38	-0.34
25. Beetroot	Kg	338.73	500.42	344.55	0.02	-0.31
26. Beans	Kg	489.82	520.24	506.55	0.03	-0.03
<b>Fruits</b>						
27. Banana	Kg	262.91	249.33	268.19	0.02	0.08
28. Papaw	Kg	362.33	464.67	425.21	0.17	-0.08
29. Mangoes	Each	291.51	184.86	236.27	-0.19	0.28
<b>Fresh Fish</b>						
30. Seer	Kg	2835.14	3940.22	3917.80	0.38	-0.01
31. Talapath	Kg	2449.20	2934.28	2853.54	0.17	-0.03
32. Paraw	Kg	2150.96	2751.27	2658.05	0.24	-0.03
<b>Dried Fish</b>						
33. Katta	Kg	2321.85	2504.56	2578.23	0.11	0.03
34. Sprats	Kg	1076.50	1296.38	1363.83	0.27	0.05
<b>Fuel</b>						
35. Kerosene Oil	Lt	183.00	182.00	211.39	0.16	0.16
36. Petrol (CPC & IOC)	Lt	309.00	292.43	306.82	-0.01	0.05
37. Diesel (CPC & IOC)	Lt	286.00	277.43	293.18	0.03	0.06
38. Gas - Avg.	12.5kg	3685.00	3981.35	4126.18	0.12	0.04
Litro	12.5kg	3690.00	3690.00	3818.57	0.03	0.03
Laughs	12.5kg	3680.00	4295.71	4458.57	0.21	0.04

**The Vision of DCS**

"To be the leader in the region in producing timely statistical information to achieve the country's development goals."

**The Mission of DCS**

"Making contribution in the socioeconomic development of the country by providing accurate timely statistics, more Effectively by means of new technology, and utilising the services of dedicated staff under a strategic leadership to become a prosperous nation in the globalised environment."

 **Department of Census & Statistics,**  
Sankyana Mandiraya  
No. 306/71, Polduwa  
Road, Battaramulla

 info@statistics.gov.lk  
 +94 11 2147000  
 +94 11 2147011  
 statistics.gov.lk

**This publication is produced by the Prices and Wages Division**

 5<sup>th</sup> floor, Department of Census and Statistics  
 prices@statistics.gov.lk  
 +94 11 2147414  +94 11 2877945