

Colombo Consumer Price Index (CCPI)-(BASE 2021=100) February 2026

27-02-2026

Department of Census and Statistics

Ministry of Finance, Planning and Economic Development

The Department of Census and Statistics (DCS) is the authorized agency to compile Colombo Consumer Price Index (CCPI). Following internationally accepted guidelines, it has been arranged to revise the base year from 2013=100 to 2021=100 in order to accommodate the changing expenditure patterns and in cooperate changes of goods & services available in the market. Accordingly, with respect to the new base, CCPI (Base 2021=100) will be released monthly commencing from February 2023 on the last working day of each month. It is emphasized that index numbers or inflation figures compiled under different base years cannot be compared.

The CCPI is compiled to indicate average changes in the prices of goods and services purchased by households in urban areas of Colombo district. The price collection of the index (Base 2021=100) has covered 10 price collection centers in Peliyagoda, Maradana, Wellawatta, Dematagoda Grandpass, Kirulapone, Nugegoda, Rathmalana, and two Dedicated Economic Centers namely Narahenpita and Rathmalana.

Prices are collected weekly from the outlets located within each of the above market areas including Sathosa and a supermarket. The consumer basket includes 426 items, which represent the typical urban household consumption expenditure. The CPI weights are derived from the Household Income and Expenditure Survey (HIES) 2019.

- ❗ The CCPI for all items for the month of February 2026 is 195.3 and it records a decrease of 1.7 index points compared to January 2026, for which the index was 197.0.
- ❗ The overall rate of inflation as measured by CCPI on Y-on-Y basis is 1.6% in February 2026.

Content

[Source Publication](#) For more details on the revision of base year, please click here: [Technical Note on Base Year Revision](#)

1. Variations in Colombo Consumer Price Index

Month on month changes in the Colombo Consumer Price Index is briefly described below.

Table 1- Monthly Changes by main Groups of Market Basket

Major Group*	Index Number			Monthly Changes of the Expenditure Values (Rs.)			Monthly Changes of the Index (%) ¹		
	Feb. 2025	Jan. 2026	Feb. 2026	Feb. 2025	Jan. 2026	Feb. 2026	Feb. 2025	Jan. 2026	Feb. 2026
	All Items	192.2	197.0	195.3	-374.70	1068.59	-1538.34	-0.21	0.59
Food and Non Alcoholic Beverages	242.3	249.4	242.9	194.65	371.85	-1563.47	0.11	0.21	-0.86
Non Food	174.3	178.3	178.3	-569.35	696.74	25.13	-0.32	0.39	0.01
Clothing & Footwear	251.0	259.1	260.4	17.95	32.37	26.06	0.01	0.02	0.01
Housing, Water, Electricity, Gas and Other Fuels	132.2	136.6	136.6	-650.06	357.27	10.94	-0.37	0.20	0.01
Transport	226.9	224.8	224.4	0.59	63.15	-42.98	0.00	0.04	-0.02
Restaurant and Hotels	238.8	249.8	250.2	27.40	85.11	20.63	0.02	0.05	0.01
Other	182.0	186.8	186.9	34.77	158.85	10.47	0.02	0.09	0.01

Note 1: There are 12 main groups of the market basket. Significant changes in February 2026 were noted in five groups, details on which are given in Table 2.

Note 2: Monthly change of the index (%) is calculated using expenditure values.

Note 3:¹ Percentage of items does not tally with overall percentage due to rounding off.

1.1 Month on Month (M on M) Change of CCPI:

The CCPI for all items for the month of February 2026 was 195.3 and it records a decrease of 1.7 index points or 0.85 percentage compared to the month of January 2026 for which the index was 197.0. This represents a decrease in expenditure value by Rs 1,538.34 in the "Market Basket".

1.1.1 Contribution to M on M Changes:

Contributions to the change in CCPI from January 2026 to February 2026 are given in Table 02. The month-on-month change was contributed by a decrease in Food items by 0.86% and an increase in Non Food items by 0.01% respectively.

1.1.2 Contribution of Food and Non-Alcoholic Beverages items: -0.86%

As shown in table 02, decreases in value change were reported for Vegetables (0.61%), Green Chillies (0.13%), Coconut (0.08%), Sea Fish (0.06%), Big Onions (0.05%), Milk Powder (0.05%), Limes (0.04%), Potatoes (0.03%), Fruit drinks/Cordials (0.02%), Rice (0.01%), Red Onions (0.01%), Tea Dust (0.01%), Coconut Oil (0.01%), Ginger (0.01%), Eggs (0.01%) and Cowpea (0.01%).

While increases in value change were reported for Fresh Fruits (0.26%) and Chicken (0.01%),

1.1.3 Contribution of Non-Food items: 0.01%

Increases in value change were reported for the groups of 'Clothing and Footwear' (0.01%), 'Housing, Water, Electricity, Gas and Other Fuels' (0.01%) and 'Restaurant and Hotels' (0.01%), while a decrease in value change was reported for the group of 'Transport' (0.02%).

Further, very slight price increases were reported in the groups of 'Furnishing Household Equipment and Routine Household Maintenance', 'Health', 'Communication' and 'Miscellaneous goods and Services' and slight price decreases were reported in the groups of 'Alcoholic beverages Tobacco and Narcotic' and 'Recreation and Culture'. Meanwhile, the price index of 'Education' group remained unchanged during the month.

**Table 02: Contribution to the changes in CCPI from January 2026 to February 2026
(Base2021=100)**

	Rs.Cts.	Value Change		
		% change		Net effect
		Increase	Decrease	
Food	-1563.47	0.27	1.14	-0.86
1 Rice	-25.88		0.01	
<i>Rice - (Kekulu white)</i>	<i>-14.52</i>		<i>0.01</i>	
<i>Rice - (Kekulu - red)</i>	<i>-22.81</i>		<i>0.01</i>	
<i>Rice - (Samba)</i>	<i>14.30</i>	<i>0.01</i>		
2 Cowpea	-9.25		0.01	
3 Chicken	23.63	0.01		
4 Sea Fish	-101.32		0.06	
5 Milk Powder	-86.91		0.05	
6 Eggs	-10.38		0.01	
7 Coconut	-140.75		0.08	
8 Coconut oil	-15.33		0.01	
9 Fresh Fruits	472.55	0.26		
<i>Banana</i>	<i>11.50</i>	<i>0.01</i>		
<i>Papaw</i>	<i>298.69</i>	<i>0.17</i>		
<i>Apple</i>	<i>12.94</i>	<i>0.01</i>		
<i>Mangoes</i>	<i>112.33</i>	<i>0.06</i>		
<i>Pineapple</i>	<i>16.07</i>	<i>0.01</i>		
<i>Water Melon</i>	<i>18.17</i>	<i>0.01</i>		
10 Vegetables	-1106.67		0.61	
11 Potatoes	-46.19		0.03	
12 Red Onions	-20.17		0.01	
13 Big Onions	-87.21		0.05	
14 Green chilies	-242.35		0.13	
15 Limes	-69.58		0.04	
16 Ginger	-10.58		0.01	

17	Tea Dust	-15.84	0.01		
18	Fruit drinks/ Cordials	-36.72	0.02		
19	Others	-34.52	0.02		
Non Food		25.13	0.04	0.02	0.01
20	Clothing & Footwear	26.06	0.01		
21	Housing,Water,Electricity,Gas and Other Fuels	10.94	0.01		
	<i>LP Gas</i>	<i>10.19</i>	<i>0.01</i>		
22	Transport	-42.98	0.02		
	<i>Petrol</i>	<i>-35.75</i>	<i>0.02</i>		
23	Restaurant and Hotels	20.63	0.01		
24	Others	10.47	0.01		
All Items		-1538.34	0.31	1.16	-0.85

*Percentages of items do not tally with overall percentage due to rounding off.

2. Inflation

The CCPI is an economic indicator constructed to measure inflation which is defined as percentage change in CCPI over the year. There are two measures of inflation in general use. One measure is Year on Year base or Point to Point inflation (The percentage change in the CPI during the last 12 months). The other measure is Moving Average Inflation (The percentage difference between the average Price Index of last 12 months & the average Price Index of previous 12 months).

Table 03: Movements of the CCPI (Base: 2021=100)

Year	Month	All Item				Food				Non Food			
		Index Number	% Change Month on Month	Inflation %		Index Number	% Change Month on Month	Inflation %		Index Number	% Change Month on Month	Inflation %	
				Y on Y	12 Month Moving Avg.			Y on Y	12 Month Moving Avg.			Y on Y	12 Month Moving Avg.
2025	February	192.2	-0.2	-4.2	-0.5	242.3	0.3	-0.2	0.8	174.3	-0.5	-6.1	-1.1
	March	191.6	-0.3	-2.6	-0.8	239.2	-1.3	0.6	0.5	174.6	0.2	-4.1	-1.4
	April	191.2	-0.2	-2.0	-1.1	238.4	-0.3	1.3	0.4	174.4	-0.1	-3.6	-1.8
	May	192.8	0.8	-0.7	-1.2	244.8	2.7	5.2	0.8	174.3	-0.1	-3.3	-2.1
	June	194.5	0.9	-0.6	-1.4	249.3	1.8	4.3	1.1	175.0	0.4	-2.8	-2.5
	July	194.1	-0.2	-0.3	-1.6	243.0	-2.5	1.5	1.1	176.7	1.0	-1.2	-2.8
	August	193.3	-0.4	1.2	-1.5	239.4	-1.5	2.0	1.2	177.0	0.2	0.8	-2.8
	September	193.7	0.2	1.5	-1.4	240.1	0.3	2.9	1.4	177.1	0.1	0.7	-2.7
	October	193.8	0.1	2.1	-1.2	240.0	0.0	3.5	1.6	177.4	0.2	1.4	-2.5
	November	193.4	-0.2	2.1	-0.8	238.6	-0.6	3.0	1.8	177.3	-0.1	1.7	-2.1
	December	195.8	1.2	2.1	-0.5	247.9	3.9	3.0	2.0	177.3	0.0	1.8	-1.7
	2026	January	197.0	0.6	2.3	0.0	249.4	0.6	3.3	2.5	178.3	0.6	1.8
February		195.3	-0.9	1.6	0.5	242.9	-2.6	0.2	2.6	178.3	0.0	2.3	-0.4

Note: Year on Year inflation, 12 Month Moving Average inflation and Month on Month change were calculated using the rounding off index numbers

2.1 Year on Year (Y-on-Y) Inflation

The overall rate of inflation as measured by the CCPI on Y-on-Y basis is 1.6% in February 2026 and Y-on-Y inflation calculated for the month of January 2026 was 2.3% (Table 03). The Y-on-Y inflation of Food Group decreased to 0.2% in February 2026 from 3.3% in January 2026 and the Y-on-Y inflation of Non Food Group increased to 2.3% in February 2026 from 1.8% in January 2026.

2.2 Contribution to Y on Y inflation:

For the month of February 2026, on Y-on-Y basis, contribution to inflation by food commodities was 0.08%.

The contribution of Non Food items was 1.55%. This was mainly due to price increases in groups of 'Housing, Water, Electricity, Gas and Other Fuels' (0.73%), 'Restaurants and Hotels' (0.31%), 'Education' (0.19%), 'Health' (0.16%), 'Clothing and Footwear' (0.11%), 'Miscellaneous Goods and Services' (0.09%), 'Furnishing Household Equipment and Routine Household Maintenance' (0.05%), 'Alcoholic beverages Tobacco and Narcotics' (0.04%), 'Recreation and Culture' (0.02%) and 'Communication' (0.02%). However, price decrease was reported for the group of 'Transport' (0.16%).

Table 04: Contribution to the changes in CCPI (Base 2021=100) year on year basis February 2026 as compared to February 2025

Sub Group/Commodity	Value Change	Increase	Decrease	Net effect
	Rs.Cts.	%	%	%
FOOD AND NON ALCOHOLIC BEVERAGES	143.72			0.08
Rice	-209.32		0.12	
Gram	-31.97		0.02	
Bread (Normal)	-24.63		0.01	
Chicken	268.00	0.15		
Beef	31.12	0.02		
Pork	65.91	0.04		
Sea fish	1186.98	0.67		
Dried Fish	236.56	0.13		
Milk powder	407.76	0.23		
Infant milk powder	-60.61		0.03	
Yoghurt	-79.55		0.05	
Eggs	23.57	0.01		
Coconut	-753.90		0.43	
Coconut oil	139.99	0.08		
Vegetable	-544.21		0.31	
Potatoes	-56.54		0.03	
Dhal Mysoor	-77.82		0.04	
Red Onions	-90.83		0.05	
Big Onions	-49.24		0.03	
Garlic	-64.70		0.04	
Green chilies	-478.85		0.27	
Sugar	-101.76		0.06	
Dried chilies	80.48	0.05		
Salt	64.35	0.04		
Tamarind	-174.06		0.10	
Ginger	-70.63		0.04	
Fruit drinks/ Cordials	-75.58		0.04	

NON FOOD	2732.17		1.55
Alcoholic beverages Tobacco and Narcotic	78.47	0.04	
<i>Beetle leaves</i>	53.44	0.03	
<i>Arecanuts</i>	17.52	0.01	
Clothing and Footwear	189.62	0.11	
<i>Clothing</i>	180.60	0.10	
<i>Footwear</i>	9.02	0.01	
Housing, Water, Electricity, Gas and Other Fuels	1284.33	0.73	
<i>Housing rent</i>	564.47	0.32	
<i>Material for construction</i>	-61.75		0.03
<i>Electricity bill</i>	681.37	0.39	
<i>LP Gas</i>	101.55	0.06	
Furnishing Household Equipment and Routine Household Maintenance	88.96	0.05	
<i>Energy saving bulbs</i>	-81.79		0.05
<i>Washing powder</i>	-41.38		0.02
<i>Wages to servants</i>	167.94	0.10	
Health	280.89	0.16	
<i>Fees to private medical practices</i>	159.19	0.09	
<i>Consultation fees to specialists</i>	82.98	0.05	
<i>Fees to Aurvadic practitioners</i>	10.38	0.01	
<i>Scan CT</i>	11.21	0.01	
<i>Payments to private hospitals</i>	13.22	0.01	
Transport	-287.74		0.16
<i>Petrol</i>	-376.95		0.21
<i>Diesel</i>	-26.06		0.01
<i>Cost of servicing of vehicles</i>	107.98	0.06	
<i>Vehicle maintenance expenses (Repair charges)</i>	15.64	0.01	
<i>Bus fare</i>	-9.92		0.01
<i>Van (other than schooling)</i>	13.86	0.01	
<i>Transport for schooling/ pre schooling</i>	31.89	0.01	
<i>Air lines</i>	-51.63		0.03
Communication	33.23	0.02	
<i>Telephones</i>	24.99	0.01	
Recreation and Culture	38.43	0.02	
<i>Television</i>	-16.16		0.01
<i>Toys</i>	60.83	0.03	
<i>Exercise books and stationeries.</i>	-13.53		0.01
Education	333.26	0.19	
<i>Pre-school fees (K.G)</i>	29.14	0.02	
<i>Tuition fees</i>	33.37	0.02	
<i>School fees (International)</i>	218.20	0.12	
<i>Course fees (Higher education)</i>	31.70	0.02	
<i>Course fees vocational training</i>	20.84	0.01	
Restaurant and hotels	539.93	0.31	
Miscellaneous Goods and Services	152.80	0.09	
<i>Hair cutting and shaving charges</i>	69.32	0.04	
<i>Hair dressing and Beauty culture services</i>	16.93	0.01	
<i>Hand bags/ Traveling bags</i>	61.40	0.03	
All Items	2875.89		1.63

Movements in the CCPI (Base 2021=100) for Head Line, Food, Non Food and Year on Year Inflation

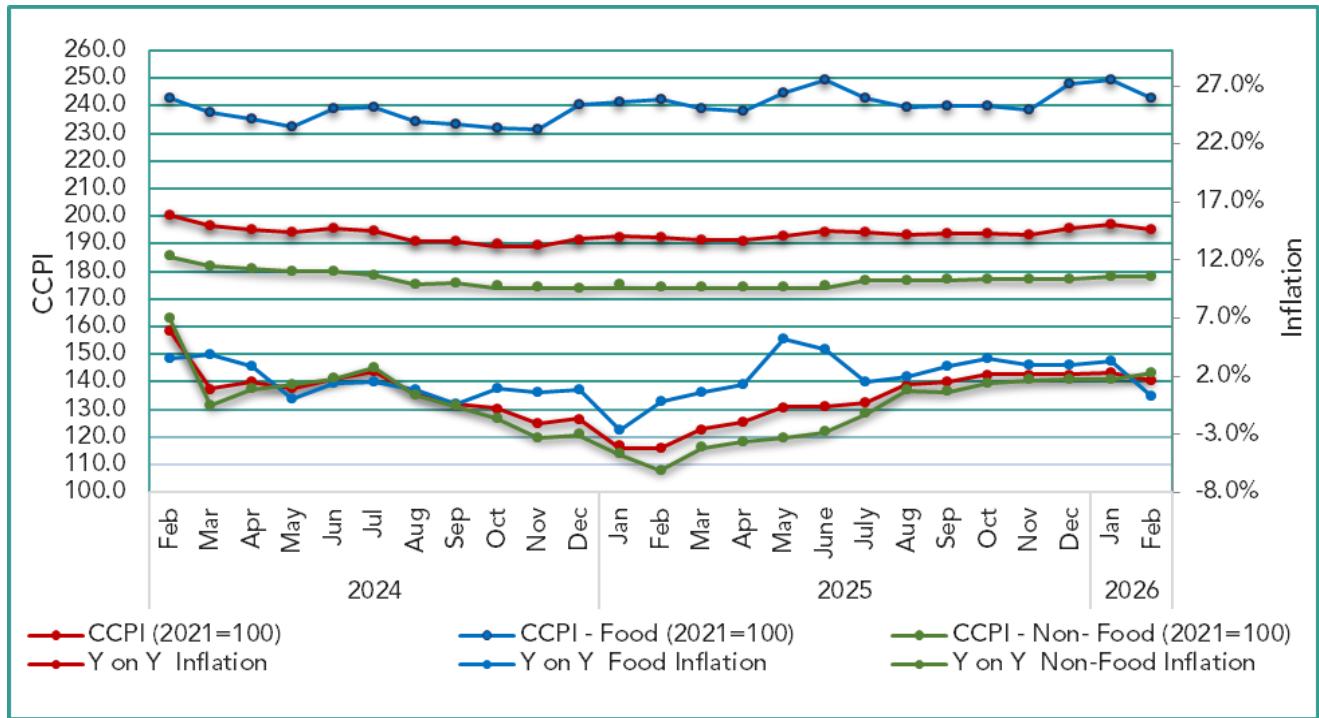


Table 05: Monthly average open market retail prices of selected items of Colombo Consumer Price Index February 2025, January 2026 & February 2026

Item	Unit	Retail Prices (Rs. Cts)			Retail Price Changes (%)	
		2025 Feb.	2026 Jan.	2026 Feb.	Feb. 26/ Feb. 25	Feb. 26/ Jan. 26
1. Rice– Kekulu – Red	Kg	235.42	213.26	209.85	-0.11	-0.02
2. Rice– Kekulu – White	Kg	224.66	219.96	217.85	-0.03	-0.01
3. Rice –Nadu - White	Kg	231.30	230.32	229.79	-0.01	0.00
4. Rice –Nadu - Red	Kg	257.97	236.76	236.38	-0.08	0.00
5. Rice– Samba	Kg	245.21	247.89	249.66	0.02	0.01
6. Cowpea	Kg	820.10	1016.46	961.61	0.17	-0.05
7. Green Grams	Kg	760.40	811.80	796.29	0.05	-0.02
8. Coconut	Each	212.41	183.90	177.35	-0.17	-0.04
9. Coconut Oil	750ml	592.66	661.49	654.70	0.10	-0.01
10. Chicken	Kg	1094.90	1201.31	1211.60	0.11	0.01
11. Eggs	Each	33.25	34.99	34.46	0.04	-0.02
12. Red Onion	Kg	543.64	452.19	426.09	-0.22	-0.06
13. Big Onion	Kg	218.89	229.64	204.96	-0.06	-0.11
14. Potatoes	Kg	296.30	291.46	269.87	-0.09	-0.07
15. Garlic	Kg	666.56	560.40	552.37	-0.17	-0.01
16. Dried Chilies	Kg	868.76	1022.19	1039.29	0.20	0.02
17. Green Chilies	Kg	1599.42	1175.30	740.69	-0.54	-0.37
18. Sugar	Kg	247.98	221.57	220.48	-0.11	0.00
19. Pepper	Kg	2751.31	2846.97	2835.25	0.03	0.00
Vegetables						
20. Ash Plantain	Kg	293.13	338.45	336.86	0.15	0.00
21. Carrot	Kg	635.45	476.80	433.96	-0.32	-0.09
22. Snake Gourd	Kg	424.60	547.28	401.76	-0.05	-0.27


23. Tomatoes	Kg	344.49	657.67	381.19	0.11	-0.42
24. Capsicum	Kg	1335.43	1174.95	908.00	-0.32	-0.23
25. Beetroot	Kg	551.03	795.24	500.42	-0.09	-0.37
26. Beans	Kg	583.84	803.53	520.24	-0.11	-0.35
Fruits						
27. Banana	Kg	262.91	249.33	268.19	0.02	0.08
28. Papaw	Kg	269.78	331.85	464.67	0.72	0.40
29. Mangoes	Each	214.64	96.79	184.86	-0.14	0.91
Fresh Fish						
30. Seer	Kg	2978.77	3951.01	3940.22	0.32	0.00
31. Talapath	Kg	2588.79	2933.64	2934.28	0.13	0.00
32. Paraw	Kg	1991.39	2695.26	2751.27	0.38	0.02
Dried Fish						
33. Katta	Kg	2115.36	2502.66	2504.56	0.18	0.00
34. Sprats	Kg	1133.76	1297.41	1296.38	0.14	0.00
Fuel -						
35. Kerosene Oil	Lt	183.00	181.43	182.00	-0.01	0.00
36. Petrol (CPC & IOC)	Lt	309.00	294.00	292.43	-0.05	-0.01
37. Diesel (CPC & IOC)	Lt	286.00	278.43	277.43	-0.03	0.00
38. Gas- Avg.	12.5kg	3685.00	3960.11	3981.35	0.04	0.01
Litro	12.5kg	3690.00	3690.00	3690.00	0.00	0.00
Laughs	12.5kg	3680.00	4250.00	4295.71	0.17	0.01



The Vision of DCS

"To be the leader in the region in producing timely statistical information to achieve the country's development goals."

The Mission of DCS

"Making contribution in the socioeconomic development of the country by providing accurate timely statistics, more Effectively by means of new technology, and utilising the services of dedicated staff under a strategic leadership to become a prosperous nation in the globalised environment."

 **Department of Census & Statistics,**
Sankyana Mandiraya
No. 306/71, Polduwa
Road, Battaramulla

 info@statistics.gov.lk
 +94 11 2147000
 +94 11 2147011
 statistics.gov.lk

This publication is produced by the Prices and Wages Division

 5th floor, Department of Census and Statistics
 prices@statistics.gov.lk
 +94 11 2147414  +94 11 2877945