

Colombo Consumer Price Index (CCPI)-(BASE 2021=100)

April 2025

30-04-2025

Department of Census and Statistics

Ministry of Finance, Planning and Economic Development

The Department of Census and Statistics (DCS) is the authorized agency to compile Colombo Consumer Price Index (CCPI). Following internationally accepted guidelines, it has been arranged to revise the base year from 2013=100 to 2021=100 in order to accommodate the changing expenditure patterns and in cooperate changes of goods & services available in the market. Accordingly, with respect to the new base, CCPI (Base 2021=100) will be released monthly commencing from February 2023 on the last working day of each month. It is emphasized that index numbers or inflation figures compiled under different base years cannot be compared.

The CCPI is compiled to indicate average changes in the prices of goods and services purchased by households in urban areas of Colombo district. The price collection of the index (Base 2021=100) has covered 10 price collection centers in Peliyagoda, Maradana, Wellawatta, Dematagoda Grandpass, Kirulapone, Nugegoda, Rathmalana, and two Dedicated Economic Centers namely Narahenpita and Rathmalana.

Prices are collected weekly from the outlets located within each of the above market areas including Sathosa and a supermarket. The consumer basket includes 426 items, which represent the typical urban household consumption expenditure. The CPI weights are derived from the Household Income and Expenditure Survey (HIES) 2019.

- 📄 The CCPI for all items for the month of April 2025 was 191.2 and it records a decrease of 0.4 index points compared to March 2025, for which the index was 191.6.
- 📄 The overall rate of inflation as measured by CCPI on Y-on-Y basis is -2.0% in April 2025

Content

- 01. Variations in Colombo Consumer Price Index (Page 1)
- 02. Inflation:(Page 5)

[🔗 Source Publication](#) For more details on the revision of base year, please click here: [Technical Note on Base Year Revision](#)

1. Variations in Colombo Consumer Price Index

Month on month changes in the Colombo Consumer Price Index is briefly described below.

Table 1- Monthly Changes by main Groups of Market Basket

Major Group*	Index Number			Monthly Changes of the Expenditure Values (Rs.)			Monthly Changes of the Index (%) ¹		
	Apr	Mar	Apr	Apr	Mar	Apr	Apr	Mar	Apr
	2024	2025	2025	2024	2025	2025	2024	2025	2025
All Items	195.2	191.6	191.2	-1422.61	-542.77	-318.45	-0.79	-0.31	-0.18
Food and Non Alcoholic Beverages	235.4	239.2	238.4	-578.68	-750.97	-203.62	-0.32	-0.43	-0.12
Non Food	180.9	174.6	174.4	-843.92	208.20	-114.84	-0.47	0.12	-0.07
Alcoholic beverages Tobacco and Narcotic	242.3	247.1	246.4	80.37	45.49	-10.80	0.04	0.03	-0.01
Clothing and Foot wear	242.1	251.3	252.1	84.96	6.15	16.03	0.05	0.00	0.01
Housing, Water, Electricity, Gas and Other Fuels	146.5	132.6	132.9	-1159.63	115.12	82.46	-0.64	0.07	0.05
Furnishing Household Equipment and Routine Household Maintenance	187.5	187.7	186.0	37.03	-21.43	-53.20	0.02	-0.01	-0.03
Transport	240.3	226.9	225.5	89.01	-2.33	-157.56	0.05	0.00	-0.09
Other	184.5	189.7	189.7	24.34	65.19	8.23	0.01	0.04	0.00

Note 1 : There are 12 main groups of the market basket. Significant changes in April 2025 were noted in six groups, details on which are given in Table 2.

Note 2: Monthly change of the index (%) is calculated using expenditure values.

Note 3:¹ Percentage of items does not tally with overall percentage due to rounding off.

1.1 Month on Month (M on M) Change of CCPI:

The CCPI for all items for the month of April 2025 was 191.2 and it records a decrease of 0.4 index points or 0.18 percentage compared to the month of March 2025 for which the index was 191.6. This represents a decrease in expenditure value by Rs 318.45 in the "Market Basket".

1.1.1 Contribution to M on M Changes:

Contributions to the change in CCPI from March 2025 to April 2025 are given in Table 02. The month-on-month change was contributed to by decrease in Food items of 0.12% and Non Food items by 0.07% respectively.

1.1.2 Contribution of Food and Non-Alcoholic Beverages items: -0.12%

As shown in table 02, decreases in value change were reported for Fresh fruits (0.17%), Coconuts (0.16%), Green Chillies (0.15%), Big Onions (0.04%), Infant Milk Powder (0.02%), Rice (0.01%), Gram (0.01%), Yoghurt (0.01%), Potatoes (0.01%), Red Onions (0.01%), Sugar (0.01%), Chilli Powder (0.01%) and Dried Chillies (0.01%).

While increases in value change were reported for Vegetables (0.24%), Fresh fish (0.13%), Milk powder (0.06%), Coconut Oil (0.03%), Ginger (0.02%), Green Gram (0.01%), Chicken (0.01%), Dried Fish (0.01%) and Eggs (0.01%).

1.1.3 Contribution of Non-Food items: -0.07%

Decreases in value change were reported for the Transport (*Petrol*) (0.09%), 'Furnishing Household Equipment and Routine Household Maintenance' (0.03%) and 'Alcoholic beverages Tobacco and Narcotic' (*Beetle leaves*) (0.01%).

Among Non-Food groups, increase in value change were reported for the groups of 'Housing, Water, Electricity, Gas and Other Fuels' (*Maintenance/Reconstruction*), (*L.P Gas*) (0.05%), Clothing and Foot wear (0.01%)

Further, a very slight price increases were reported in the groups of 'Health' and 'Miscellaneous goods and Services'. meanwhile, the price indexes of 'Communication', 'Recreation and culture', 'Education' and 'Restaurant and Hotels' groups remained unchanged during the month.

Table 02: Contribution to the change in CCPI from March 2025 to April 2025
(Base2021=100)

	Rs.Cts.	Value Change		
		% change		Net effect
		Increase	Decrease	
Food	-203.62	0.51	0.63	-0.12
1 Rice	-21.34		0.01	
<i>Rice - (Kekulu white)</i>	<i>-10.55</i>		<i>0.01</i>	
<i>Rice - (Kekulu - red)</i>	<i>-19.81</i>		<i>0.01</i>	
<i>Rice - (Samba)</i>	<i>23.42</i>	<i>0.01</i>		
2 Green gram	18.97	0.01		
3 Gram	-13.83		0.01	
4 Chicken	13.23	0.01		
5 Fresh Fish	225.29	0.13		
6 Dried Fish	14.58	0.01		
<i>Sprats (dry)</i>	<i>-25.95</i>		<i>0.01</i>	
<i>Katta (dry)</i>	<i>22.93</i>	<i>0.01</i>		
<i>Keerameen (dry)</i>	<i>14.14</i>	<i>0.01</i>		
7 Milk powder	103.76	0.06		
8 Infant milk powder	-36.19		0.02	
9 Yoghurt	-26.01		0.01	
10 Eggs	17.46	0.01		
11 Coconuts	-283.72		0.16	
12 Coconut Oil	59.04	0.03		

13	Fresh Fruits	-306.22		0.17	
	<i>Banana</i>	<i>12.23</i>	<i>0.01</i>		
	<i>Papaw</i>	<i>-294.16</i>		<i>0.17</i>	
	<i>Water Melon</i>	<i>-10.95</i>		<i>0.01</i>	
14	Vegetables	417.79	0.24		
15	Potatoes	-23.22		0.01	
16	Red onions	-13.19		0.01	
17	Big onions	-78.64		0.04	
18	Green chilies	-267.15		0.15	
19	Sugar	-12.05		0.01	
20	Chili powder	-22.12		0.01	
21	Dried chilies	-13.14		0.01	
22	Ginger	35.89	0.02		
23	Others	7.18	0.00		
	Non Food	-114.84	0.06	0.13	-0.07
24	Alcoholic beverages Tobacco and Narcotic	-10.80		0.01	
	<i>Beetle leaves</i>	<i>-13.13</i>		<i>0.01</i>	
25	Clothing and Foot wear	16.03	0.01		
26	Housing, Water, Electricity, Gas and Other Fuels	82.46	0.05		
	<i>Maintenance/ Reconstruction</i>	<i>32.98</i>	<i>0.02</i>		
	<i>L. P. Gas</i>	<i>49.48</i>	<i>0.03</i>		
27	Furnishing Household Equipment and Routine Household Maintenance	-53.20		0.03	
	<i>Energy saving bulbs</i>	<i>-54.52</i>		<i>0.03</i>	
28	Transport	-157.56		0.09	
	<i>Petrol</i>	<i>-162.48</i>		<i>0.09</i>	
29	Others	8.23		0.00	
	All Items	-318.45	0.57	0.76	-0.18

*Percentages of items do not tally with overall percentage due to rounding off.

2. Inflation

The CCPI is an economic indicator constructed to measure inflation which is defined as percentage change in CCPI over the year. There are two measures of inflation in general use. One measure is Year on Year base or Point to Point inflation (The percentage change in the CPI during the last 12 months). The other measure is Moving Average Inflation (The percentage difference between the average Price Index of last 12 months & the average Price Index of previous 12 months).

Table 03: Movements of the CCPI (Base: 2021=100)

Year	Month	All Item				Food				Non Food				
		Index Number	% Change Month on Month	Inflation %		Index Number	% Change Month on Month	Inflation %		Index Number	% Change Month on Month	Inflation %		
				Y on Y	12 Month Moving Avg.			Y on Y	12 Month Moving Avg.			Y on Y	12 Month Moving Avg.	
2024	April	195.2	-0.8	1.5	5.7	235.4	-1.0	2.9	1.2	180.9	-0.7	0.9	7.9	
	May	194.1	-0.6	0.9	3.9	232.6	-1.2	0.0	-0.3	180.3	-0.3	1.3	6.0	
	June	195.6	0.8	1.7	3.1	239.1	2.8	1.4	-0.5	180.1	-0.1	1.8	4.9	
	July	194.7	-0.5	2.4	2.8	239.4	0.1	1.5	-0.2	178.8	-0.7	2.8	4.3	
	August	191.1	-1.8	0.5	2.5	234.6	-2.0	0.8	0.2	175.6	-1.8	0.4	3.6	
	September	190.9	-0.1	-0.5	2.4	233.3	-0.6	-0.3	0.7	175.8	0.1	-0.5	3.2	
	October	189.9	-0.5	-0.8	2.2	231.9	-0.6	1.0	1.2	174.9	-0.5	-1.6	2.6	
	November	189.4	-0.3	-2.1	1.7	231.7	-0.1	0.6	1.6	174.3	-0.3	-3.3	1.8	
	December	191.7	1.2	-1.7	1.2	240.7	3.9	0.8	1.6	174.2	-0.1	-3.0	1.1	
	2025	January	192.6	0.5	-4.0	0.4	241.5	0.3	-2.6	1.1	175.2	0.6	-4.7	0.0
		February	192.2	-0.2	-4.2	-0.5	242.3	0.3	-0.2	0.8	174.3	-0.5	-6.1	-1.1
		March	191.6	-0.3	-2.6	-0.8	239.2	-1.3	0.6	0.5	174.6	0.2	-4.1	-1.4
April		191.2	-0.2	-2.0	-1.1	238.4	-0.3	1.3	0.4	174.4	-0.1	-3.6	-1.8	

Note: Year on Year inflation, 12 Month Moving Average inflation and Month on Month change were calculated using the rounding off index numbers

2.1 Year on Year (Y-on-Y) Inflation

The overall rate of inflation as measured by the CCPI on Y-on-Y basis is -2.0% in April 2025 and Y-on-Y inflation calculated for the month of March 2025 was -2.6% (Table 03). The Y-on-Y inflation of Food Group increased to 1.3% in April 2025 from 0.6% in March 2025 and the Y-on-Y inflation of Non Food Group increased to -3.6% in April 2025 from -4.1% in March 2025.

2.2 Contribution to Y on Y inflation:

For the month of April 2025, on Y-on-Y basis, contribution to inflation by food commodities was 0.40%.

The contribution of Non Food items was -2.43%. This was mainly due to price decreases in the groups of 'Housing, Water, Electricity, Gas and Other Fuels' (2.20%), 'Transport' (0.95%), 'Furnishing Household Equipment and Routine Household Maintenance' (0.03%) and 'Restaurants and Hotels' (0.01%). However, price increases in groups of items were reported for 'Education' (0.25%), 'Health' (0.23%), 'Miscellaneous Goods and Services' (0.12%), 'Clothing and Footwear' (0.11%), 'Alcoholic beverages Tobacco and Narcotics' (0.03%), and 'Recreation and Culture' (0.01%). Further, a very slight price decrease was reported in the group of 'Communication' compared to the month of April 2024.

Table 04: Contribution to the decrease in CCPI from April 2024 April 2025 (Base 2021=100)

Sub Group/Commodity	Value Change Rs.Cts.	Increase %	Decrease %	Net effect %
Food and Non Alcoholic Beverages	714.80	2.61	2.21	0.40
Rice	237.36	0.13		
Green gram	-172.21		0.10	
Bread (Normal)	-162.07		0.09	
Chicken	-254.09		0.14	
Sea fish	307.68	0.17		
Canned fish	-70.19		0.04	
Milk powder	-51.23		0.03	
Infant milk powder	-66.50		0.04	
Eggs	-317.76		0.18	
Coconuts	1839.95	1.03		
Coconut oil	402.55	0.22		
Fresh Fruits	-581.92		0.32	
Vegetable	1082.74	0.60		
Big Onions	-1488.96		0.83	
Green chilies	254.23	0.14		
Sugar	-166.47		0.09	
Chilly powder	-115.29		0.06	
Dried chilies	-104.83		0.06	
Salt	171.12	0.10		
Turmeric	142.67	0.08		
Limes	-142.12		0.08	
Tamarind	169.59	0.09		
Non Food	-4349.82	0.76	3.19	-2.43
Alcoholic beverages Tobacco and Narcotic	62.65	0.03		
Arrack	38.59	0.02		
Whiskey	12.05	0.01		
Beer	13.08	0.01		
Cigarettes	72.43	0.04		
Beetle leaves	-67.26		0.04	
Clothing and Foot Wear	202.77	0.11		
Housing, Water, Electricity, Gas and Other Fuels	-3947.38		2.20	
Housing rent	145.93	0.08		
Maintenance/ Reconstruction	274.07	0.15		
Water bills	-259.82		0.14	
Electricity bill	-3747.51		2.09	
L. P. Gas	-275.01		0.15	
Kerosene oil	-85.03		0.05	
Furnishing Household Equipment and Routine Household Maintenance	-45.57		0.03	
Health	420.65	0.23		
Fees to private medical practices	233.08	0.13		
Consultation fees to specialists	98.54	0.05		
Transport	-1702.84		0.95	
Petrol	-1572.80		0.88	
Diesel	-234.06		0.13	
bus fare	-187.93		0.10	
Communication	-4.22		0.00	
Recreation and Culture	12.59	0.01		
Exercise books and stationeries.	-82.46		0.05	
Education	453.56	0.25		
Restaurant and hotels	-16.78		0.01	
Miscellaneous Goods and Services	214.76	0.12		
All Items	-3635.01	3.37	5.40	-2.03

*Percentages of items do not tally with overall percentage due to rounding off.

Movements in the CCPI (Base 2021=100) for Head Line, Food, Non Food and Year on Year Inflation

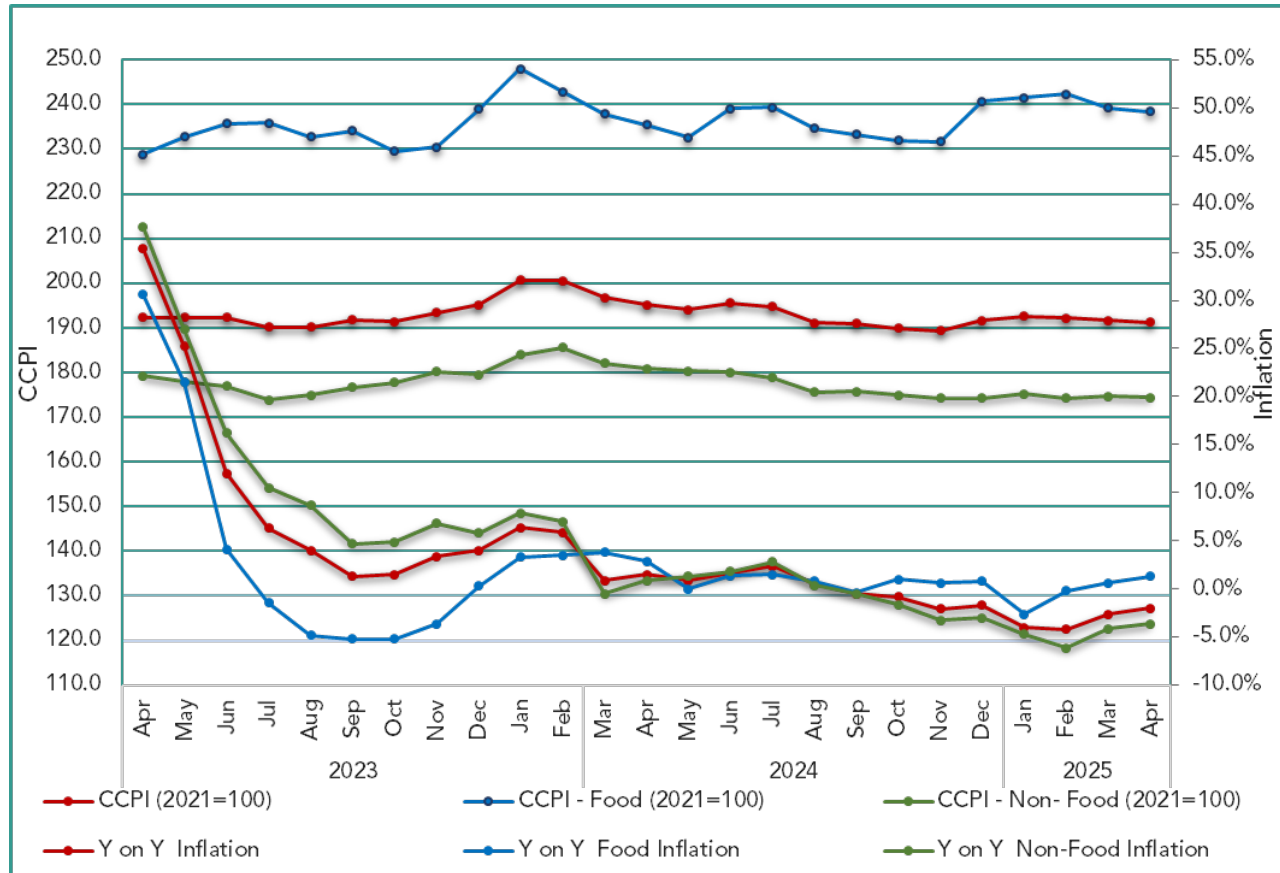


Table 05: Monthly average open market retail prices of selected items of Colombo Consumer Price Index April 2024, March 2025 & April 2025


Item	Unit	Retail Prices (Rs. Cts)			Retail Price Changes (%)	
		2024 Apr.	2025 Mar.	2025 Apr.	Apr. 25/ Apr. 24	Apr. 25/ Mar. 25
1. Rice– Kekulu – Red	Kg	191.33	225.93	222.96	16.53	-1.31
2. Rice– Kekulu – White	Kg	207.82	221.11	219.57	5.66	-0.69
3. Rice –Nadu - White	Kg	218.20	229.66	228.39	4.67	-0.55
4. Rice –Nadu - Red	Kg	222.74	253.64	244.73	9.87	-3.51
5. Rice– Samba	Kg	264.33	246.18	249.07	-5.77	1.18
6. Cowpea	Kg	976.25	820.73	813.85	-16.64	-0.84
7.Green Grams	Kg	1453.25	794.23	859.63	-40.85	8.23
8. Coconut	Each	111.17	209.93	196.73	76.97	-6.29
9. Coconut Oil	750ml	450.79	603.02	629.19	39.57	4.34
10.Chicken	Kg	1255.23	1138.82	1144.58	-8.81	0.51
11. Eggs	Each	48.45	31.24	32.14	-33.67	2.87
12. Red Onion	Kg	373.27	456.65	439.58	17.76	-3.74
13. Big Onion	Kg	587.82	188.62	166.36	-71.70	-11.80
14. Potatoes	Kg	290.45	300.73	289.88	-0.19	-3.61
15. Garlic	Kg	660.57	661.41	659.47	-0.17	-0.29
16. Dried Chilies	Kg	1037.34	843.07	815.21	-21.41	-3.30
17. Green Chilies	Kg	441.20	1376.21	897.12	103.34	-34.81
18. Sugar	Kg	283.88	242.13	238.87	-15.85	-1.34
19. Pepper	Kg	2807.79	2729.62	2739.60	-2.43	0.37
Vegetables-						
20. Ash Plantain	Kg	327.81	289.99	277.36	-15.39	-4.36
21. Carrot	Kg	407.43	846.49	660.95	62.22	-21.92
22. Snake Gourd	Kg	314.05	372.08	488.84	55.66	31.38
23. Tomatoes	Kg	270.44	333.28	525.15	94.19	57.57
24. Capsicum	Kg	649.29	963.72	915.29	40.97	-5.03
25. Beetroot	Kg	341.82	338.73	469.16	37.25	38.50
26. Beans	Kg	421.43	489.82	661.92	57.06	35.13
Fruits						
27. Banana	Kg	318.48	260.74	265.59	-16.61	1.86
28. Papaw	Kg	292.26	362.33	231.53	-20.78	-36.10
29. Mangoes	Each	410.48	291.51	287.48	-29.96	-1.38
Fresh Fish –						
30. Seer	Kg	3115.64	2835.14	2902.89	-6.83	2.39
31.Talapath	Kg	2402.84	2449.20	2522.59	4.98	3.00
32.Paraw	Kg	2196.51	2150.96	2119.73	-3.50	-1.45
Dried Fish -						
33.Katta	Kg	2186.14	2321.85	2410.15	10.25	3.80
34. Sprats	Kg	1258.92	1076.50	1028.59	-18.30	-4.45
Fuel -						
35. Kerosene Oil	Lt	248.00	183.00	183.00	-26.21	0.00
36. Petrol (CPC & IOC)	Lt	371.00	309.00	301.86	-18.64	-2.31
37. Diesel (CPC & IOC)	Lt	363.00	286.00	286.00	-21.21	0.00
38. Gas- Avg.	12.5kg	4179.37	3687.50	3762.50	-9.97	2.03
	Litro	12.5kg	4148.75	3690.00	-11.06	0.00
	Laughs	12.5kg	4271.25	3680.00	-6.82	8.15





The Vision of DCS

“To be the leader in the region in producing timely statistical information to achieve the country’s development goals.”

The Mission of DCS

“Making contribution in the socioeconomic development of the country by providing accurate timely statistics, more Effectively by means of new technology, and utilising the services of dedicated staff under a strategic leadership to become a prosperous nation in the globalised environment.”

 Department of Census & Statistics,
Sankyana Mandiraya
No. 306/71, Polduwa
Road, Battaramulla

 info@statistics.gov.lk
 +94 11 2147000
 +94 11 2147011
 statistics.gov.lk

This publication is produced by the Prices and Wages Division

 5th floor, Department of Census and Statistics
 prices@statistics.gov.lk
 +94 11 2147414  +94 11 2877945