

Colombo Consumer Price Index (CCPI)-(BASE 2021=100) February 2025

28-02-2025

Department of Census and Statistics

Ministry of Finance, Planning and Economic Development

The Department of Census and Statistics (DCS) is the authorized agency to compile Colombo Consumer Price Index (CCPI). Following internationally accepted guidelines, it has been arranged to revise the base year from 2013=100 to 2021=100 in order to accommodate the changing expenditure patterns and in cooperate changes of goods & services available in the market. Accordingly, with respect to the new base, CCPI (Base 2021=100) will be released monthly commencing from February 2023 on the last working day of each month. It is emphasized that index numbers or inflation figures compiled under different base years cannot be compared.


The CCPI is compiled to indicate average changes in the prices of goods and services purchased by households in urban areas of Colombo district. The price collection of the index (Base 2021=100) has covered 10 price collection centers in Peliyagoda, Maradana, Wellawatta, Dematagoda Grandpass, Kirulapone, Nugegoda, Rathmalana, and two Dedicated Economic Centers namely Narahenpita and Rathmalana.

Prices are collected weekly from the outlets located within each of the above market areas including Sathosa and a supermarket. The consumer basket includes 426 items, which represent the typical urban household consumption expenditure. The CPI weights are derived from the Household Income and Expenditure Survey (HIES) 2019.

- ▣ The CCPI for all items for the month of February 2025 was 192.2 and it records a decrease of 0.4 index points compared to January 2025, for which the index was 192.6.
- ▣ The overall rate of inflation as measured by CCPI on Y-on-Y basis is -4.2% in February 2025

Content

01. Variations in Colombo Consumer Price Index (Page 1)
02. Inflation:(Page 5)

 Source Publication For more details on the revision of base year, please click here: [Technical Note on Base Year Revision](#)

1. Variations in Colombo Consumer Price Index

Month on month changes in the Colombo Consumer Price Index is briefly described below.

Table 1- Monthly Changes by main Groups of Market Basket

Major Group*	Index Number			Monthly Changes of the Expenditure Values (Rs.)			Monthly Changes of the Index (%) ¹		
	Feb	Jan	Feb.	Feb	Jan	Feb.	Feb	Jan	Feb.
	2024	2025	2025	2024	2025	2025	2024	2025	2025
All Items	200.6	192.6	192.2	-92.52	831.37	-374.70	-0.05	0.47	-0.21
Food and Non Alcoholic Beverages	242.8	241.5	242.3	-1230.64	189.22	194.65	-0.67	0.11	0.11
Non Food	185.6	175.2	174.3	1138.13	642.15	-569.35	0.62	0.36	-0.32
Alcoholic beverages Tobacco and Narcotic	232.6	240.9	244.1	174.45	90.73	49.08	0.09	0.05	0.03
Clothing and Footwear	239.3	250.1	251.0	-57.03	50.14	17.95	-0.03	0.03	0.01
Housing, Water, Electricity, Gas and Other Fuels	158.7	134.4	132.2	243.92	-186.09	-650.06	0.13	-0.11	-0.37
Furnishing Household Equipment and Routine Household Maintenance	187.0	189.0	188.4	46.49	178.80	-21.01	0.03	0.10	-0.01
Recreation and Culture	180.0	182.1	181.0	16.18	20.42	-19.46	0.01	0.01	-0.01
Restaurant and Hotels	239.8	238.2	238.8	0.00	-11.82	27.40	0.00	-0.01	0.02
Miscellaneous Goods and Services	187.8	194.2	195.1	12.46	-1.90	26.16	0.01	0.00	0.01
Other	200.8	198.2	198.2	701.67	501.87	0.59	0.38	0.29	0.00

Note 1: There are 12 main groups of the market basket. Significant changes in February 2025 were noted in eight groups, details on which are given in Table2.

Note 2: Monthly change of the index (%) is calculated using expenditure values.

Note 3:¹ Percentage of items does not tally with overall percentage due to rounding off.

1.1 Month on Month (M on M) Change of CCPI:

The CCPI for all items for the month of February 2025 was 192.2 and it records a decrease of 0.4 index points or 0.21 percentage compared to the month of January 2025 for which the index was 192.6. This represents a decrease in expenditure value by Rs 374.70 in the "Market Basket".

1.1.1 Contribution to M on M Changes:

Contributions to the change in CCPI from January 2025 to February 2025 are given in Table 02. The month-on-month change was contributed to by an increase in Food items of 0.11% and decrease in Non Food items by 0.32%, respectively.

1.1.2 Contribution of Food and Non-Alcoholic Beverages items: 0.11%

As shown in table 02, increases in value change were reported for Coconuts (0.38%), Vegetables (0.25%), Fresh Fruits (0.08%), Green Chillies (0.07%), Salt (0.03%), Tamarind (0.03%), Chicken (0.01%), Juggery (0.01%) and Soft drinks (0.01%).

While decreases in value change were reported for Rice (0.24%), Fresh fish (0.22%), Big Onions (0.08%), Limes (0.05%), Dried Fish (0.02%), Potatoes (0.02%), Green Gram (0.01%), Eggs (0.01%), Canned Fish

(0.01%), Dhall Mysoor (0.01%), Red Onions (0.01%), Garlic (0.01%), Sugar (0.01%), Dried Chillies (0.01%) and Curry Powder (0.01%).

1.1.3 Contribution of Non-Food items: - 0.32%

Among Non-Food groups, decreases in value change were reported for the groups of 'Housing, Water, Electricity, Gas and Other Fuels' (0.37%), 'Furnishing Household Equipment and Routine Household Maintenance' (0.01%) and 'Recreation and Culture' (0.01%).

While increases in value change were reported for the groups of 'Alcoholic beverages Tobacco and Narcotic' (0.03%), 'Restaurant and Hotels' (0.02%), 'Clothing and Footwear' (0.01%) and 'Miscellaneous Goods and Services' (0.01%)

Further, a very slight price increase was reported in the group of 'Transport' meanwhile, the price indexes of 'Communication', 'Education' and 'Health' groups remained unchanged during the month.

Table 02: Contribution to the change in CCPI from January 2025 to February 2025
(Base2021=100)

	Rs.Cts.	Value Change		
		% change		Net effect
		Increase	Decrease	
Food	194.65	0.85	0.74	0.11
1 Rice	-425.30		0.24	
<i>Rice - (Kekulu white)</i>	<i>-75.62</i>		<i>0.04</i>	
<i>Rice - (Kekulu - red)</i>	<i>-266.21</i>		<i>0.15</i>	
<i>Rice - (Samba)</i>	<i>-62.09</i>		<i>0.04</i>	
<i>Rice - (Nadu-White)</i>	<i>-19.61</i>		<i>0.01</i>	
2 Gram	-14.56		0.01	
3 Chicken	13.37	0.01		
4 Fresh Fish	-382.27		0.22	
5 Dried Fish	-34.85		0.02	
<i>Sprats (dry)</i>	<i>-37.73</i>		<i>0.02</i>	
6 Canned fish	-15.32		0.01	
7 Eggs	-17.62		0.01	
8 Coconuts	674.89	0.38		
9 Fresh Fruits	144.94	0.08		
<i>Papaw</i>	<i>19.49</i>	<i>0.01</i>		
<i>Mangoes</i>	<i>105.50</i>	<i>0.06</i>		
<i>Water Melon</i>	<i>60.59</i>	<i>0.03</i>		
10 Vegetables	434.70	0.25		
11 Potatoes	-42.05		0.02	
12 Dhal Mysoor	-16.60		0.01	
13 Red onions	-21.78		0.01	
14 Big onions	-139.02		0.08	

15	Garlic	-12.25		0.01	
16	Green chillies	118.16	0.07		
17	Sugar	-23.31		0.01	
18	Juggery	8.97	0.01		
19	Dried chillies	-12.57		0.01	
20	Curry powder	-16.09		0.01	
21	Salt	54.08	0.03		
22	Limes	-83.45		0.05	
23	Tamarind	45.27	0.03		
24	Soft drinks	12.27	0.01		
25	Others	-54.99		0.03	
	Non Food	-569.35	0.07	0.39	-0.32
26	Alcoholic beverages Tobacco and Narcotic	49.08	0.03		
	<i>Arrack</i>	<i>16.54</i>	<i>0.01</i>		
	<i>Cigarettes</i>	<i>31.04</i>	<i>0.02</i>		
27	Clothing and Footwear	17.95	0.01		
28	Housing, Water, Electricity, Gas and Other Fuels	-650.06		0.37	
	<i>Maintenance/ Reconstruction</i>	<i>45.11</i>	<i>0.03</i>		
	<i>Electricity Bill</i>	<i>-693.53</i>		<i>0.39</i>	
29	Furnishing Household Equipment and Routine Household Maintenance	-21.01		0.01	
30	Recreation and Culture	-19.46		0.01	
	<i>Exercise books and stationeries</i>	<i>-19.46</i>		<i>0.01</i>	
31	Restaurant and Hotels	27.40	0.02		
32	Miscellaneous Goods and Services	26.16	0.01		
33	Others	0.59	0.00		
	All Items	-374.70	0.92	1.13	-0.21

*Percentages of items do not tally with overall percentage due to rounding off.

2. Inflation

The CCPI is an economic indicator constructed to measure inflation which is defined as percentage change in CCPI over the year. There are two measures of inflation in general use. One measure is Year on Year base or Point to Point inflation (The percentage change in the CPI during the last 12 months). The other measure is Moving Average Inflation (The percentage difference between the average Price Index of last 12 months & the average Price Index of previous 12 months).

Table 03: Movements of the CCPI (Base: 2021=100)

Year	Month	All Item				Food				Non Food			
		Index Number	% Change Month on Month	Inflation %		Index Number	% Change Month on Month	Inflation %		Index Number	% Change Month on Month	Inflation %	
				Y on Y	12 Month Moving Avg.			Y on Y	12 Month Moving Avg.			Y on Y	12 Month Moving Avg.
2024	February	200.6	0.0	5.9	11.3	242.8	-2.1	3.5	5.4	185.6	0.9	7.0	14.2
	March	196.7	-1.9	0.9	8.0	237.8	-2.1	3.8	2.9	182.1	-1.9	-0.5	10.5
	April	195.2	-0.8	1.5	5.7	235.4	-1.0	2.9	1.2	180.9	-0.7	0.9	7.9
	May	194.1	-0.6	0.9	3.9	232.6	-1.2	0.0	-0.3	180.3	-0.3	1.3	6.0
	June	195.6	0.8	1.7	3.1	239.1	2.8	1.4	-0.5	180.1	-0.1	1.8	4.9
	July	194.7	-0.5	2.4	2.8	239.4	0.1	1.5	-0.2	178.8	-0.7	2.8	4.3
	August	191.1	-1.8	0.5	2.5	234.6	-2.0	0.8	0.2	175.6	-1.8	0.4	3.6
	September	190.9	-0.1	-0.5	2.4	233.3	-0.6	-0.3	0.7	175.8	0.1	-0.5	3.2
	October	189.9	-0.5	-0.8	2.2	231.9	-0.6	1.0	1.2	174.9	-0.5	-1.6	2.6
	November	189.4	-0.3	-2.1	1.7	231.7	-0.1	0.6	1.6	174.3	-0.3	-3.3	1.8
	December	191.7	1.2	-1.7	1.2	240.7	3.9	0.8	1.6	174.2	-0.1	-3.0	1.1
2025	January	192.6	0.5	-4.0	0.4	241.5	0.3	-2.6	1.1	175.2	0.6	-4.7	0.0
	February	192.2	-0.2	-4.2	-0.5	242.3	0.3	-0.2	0.8	174.3	-0.5	-6.1	-1.1

Note: Year on Year inflation, 12 Month Moving Average inflation and Month on Month change were calculated using the rounding off index numbers

2.1 Year on Year (Y-on-Y) Inflation

The overall rate of inflation as measured by the CCPI on Y-on-Y basis is -4.2% in February 2025 and Y-on-Y inflation calculated for the month of January 2025 was -4.0% (Table 03). The Y-on-Y inflation of Food Group increased to -0.2% in February 2025 from -2.6% in January 2025 and the Y-on-Y inflation of Non Food Group decreased to -6.1% in February 2025 from -4.7% in January 2025.

2.2 Contribution to Y on Y inflation:

For the month of February 2025, on Y-on-Y basis, contribution to inflation by food commodities was -0.06%.

The contribution of Non Food items was -4.15%. This was mainly due to price decreases in the groups of 'Housing, Water, Electricity, Gas and Other Fuels' (4.17%), 'Transport' (0.79%) and 'Restaurants and Hotels' (0.03%). However, price increases in groups of items were reported for 'Education' (0.25%), 'Health' (0.21%), 'Clothing and Footwear' (0.13%), 'Miscellaneous Goods and Services' (0.12%), 'Alcoholic beverages Tobacco and Narcotics' (0.10%), 'Furnishing Household Equipment and Routine Household Maintenance' (0.02%) and 'Recreation and Culture' (0.01%). Further, a very slight price decrease was reported in the group of 'Communication' compared to the month of February 2024.

Table 04: Contribution to the decrease in CCPI from February 2024 February 2025
(Base 2021 = 100)

Sub Group/Commodity	Value	Increase	Decrease	Net effect
	Change			
	Rs.Cts.	%	%	%
Food and Non Alcoholic Beverages	-119.48	1.80	1.87	-0.06
Rice	223.42	0.12		
Wheat flour	-37.20		0.02	
Green gram	-113.37		0.06	
Bread (Normal)	-137.44		0.07	
Chicken	-243.54		0.13	
Sea fish	-57.95		0.03	
Dried fish	-92.78		0.05	
Canned fish	-50.94		0.03	
Eggs	-475.22		0.26	
Coconuts	2219.78	1.20		
Coconut oil	320.40	0.17		
Fresh Fruits	-158.95		0.09	
Vegetable	-936.36		0.51	
Potatoes	50.42	0.03		
Big Onions	-721.27		0.39	
Green chillies	191.12	0.10		
Sugar	-170.21		0.09	
Chili powder	-126.09		0.07	
Dried chillies	-173.42		0.09	
Tamarind	220.10	0.12		
Tea dust/ leaves	99.23	0.05		
Non Food	-7652.92	0.84	4.99	-4.15
Alcoholic beverages Tobacco and Narcotic	177.53	0.10		
<i>Arrack</i>	<i>38.59</i>	<i>0.02</i>		
<i>Whiskey</i>	<i>29.09</i>	<i>0.02</i>		
<i>Beer</i>	<i>13.08</i>	<i>0.01</i>		
<i>Cigarettes</i>	<i>72.43</i>	<i>0.04</i>		
Clothing and Footwear	237.24	0.13		
Housing, Water, Electricity, Gas and Other Fuels	-7688.15		4.17	
<i>Housing rent</i>	<i>145.93</i>	<i>0.08</i>		
<i>Water bills</i>	<i>-259.82</i>		<i>0.14</i>	
<i>Electricity bill</i>	<i>-7125.95</i>		<i>3.87</i>	
<i>L. P. Gas</i>	<i>-451.89</i>		<i>0.25</i>	
<i>Kerosene oil</i>	<i>-94.84</i>		<i>0.05</i>	
Furnishing Household Equipment and Routine Household Maintenance	41.88	0.02		
Health	389.49	0.21		
Transport	-1454.97		0.79	
<i>Petrol</i>	<i>-1410.32</i>		<i>0.77</i>	
<i>Diesel</i>	<i>-234.06</i>		<i>0.13</i>	
<i>bus fare</i>	<i>-187.93</i>		<i>0.10</i>	
Communication	-4.22		0.00	
Recreation and Culture	18.46	0.01		
Education	463.24	0.25		
Restaurant and hotels	-48.73		0.03	
Miscellaneous Goods and Services	215.31	0.12		
All Items	-7772.40	2.64	6.86	-4.22

*Percentages of items do not tally with overall percentage due to rounding off.

Movements in the CCPI (Base 2021=100) for Head Line, Food, Non Food and Year on Year Inflation

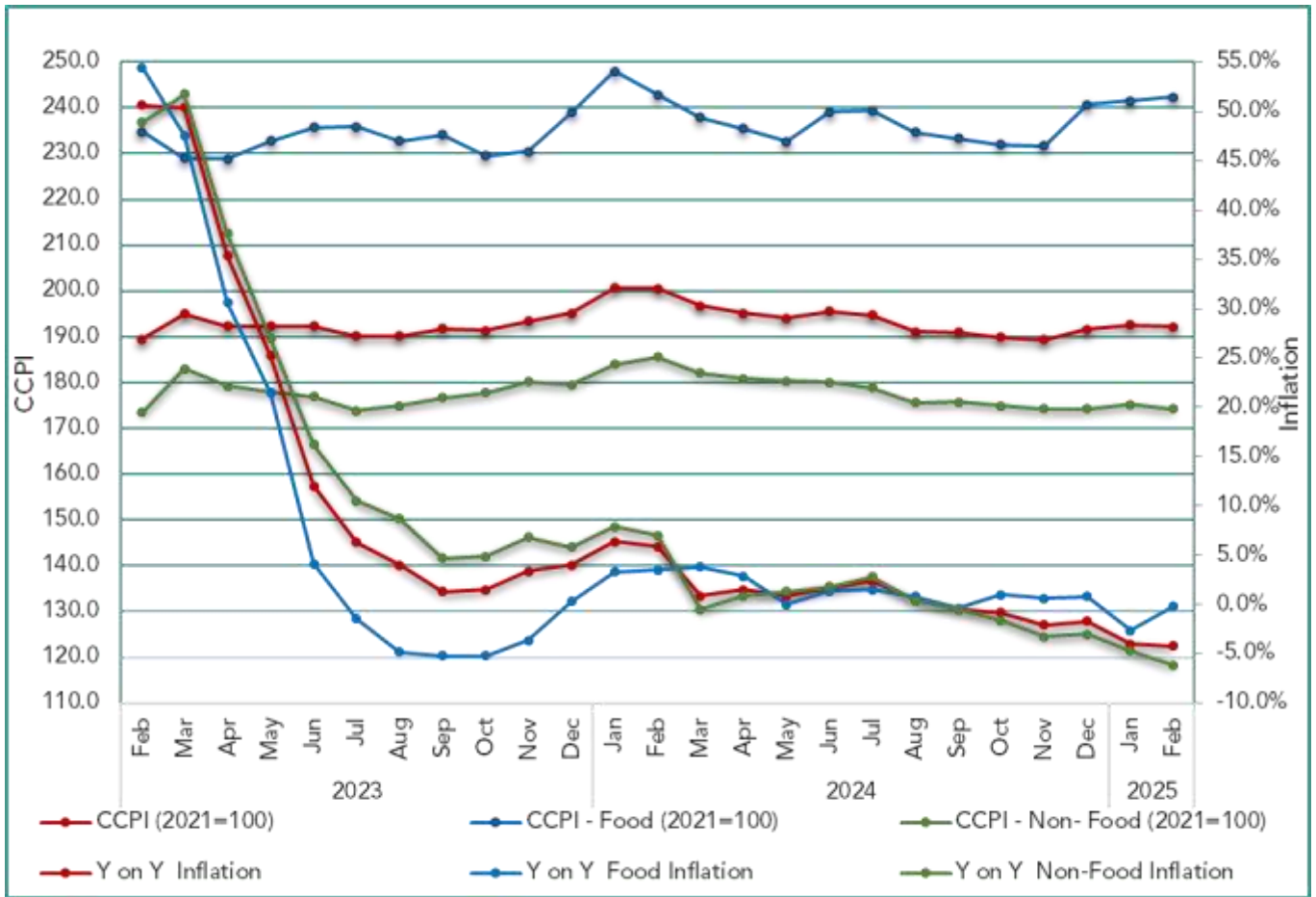


Table 05: Monthly average open market retail prices of selected items of Colombo Consumer Price Index February 2024, January 2025 & February 2025


Item	Unit	Retail Prices (Rs. Cts)			Retail Price Changes (%)	
		2024 Feb.	2025 Jan.	2025 Feb.	Feb. 25/ Feb. 24	Feb. 25 / Jan. 25
1. Rice– Kekulu – Red	Kg	196.70	275.28	235.42	19.68	-14.48
2. Rice– Kekulu – White	Kg	210.62	235.65	224.66	6.67	-4.66
3. Rice –Nadu - White	Kg	218.90	235.50	231.30	5.66	-1.79
4. Rice –Nadu - Red	Kg	220.95	259.84	257.97	16.75	-0.72
5. Rice– Samba	Kg	273.03	252.89	245.21	-10.19	-3.04
6. Cowpea	Kg	1233.66	840.28	820.10	-33.52	-2.40
7.Green Grams	Kg	1151.19	771.47	760.40	-33.95	-1.44
8. Coconut	Each	109.18	181.02	212.41	94.55	17.34
9. Coconut Oil	750ml	450.67	590.44	592.66	31.51	0.38
10.Chicken	Kg	1200.95	1089.07	1094.90	-8.83	0.53
11. Eggs	Each	57.65	34.16	33.25	-42.32	-2.65
12. Red Onion	Kg	427.74	571.83	543.64	27.10	-4.93
13. Big Onion	Kg	423.05	258.24	218.89	-48.26	-15.24
14. Potatoes	Kg	272.73	315.96	296.30	8.64	-6.22
15. Garlic	Kg	666.05	688.18	666.56	0.08	-3.14
16. Dried Chillies	Kg	1236.24	895.39	868.76	-29.73	-2.97
17. Green Chillies	Kg	1256.68	1387.52	1599.42	27.27	15.27
18. Sugar	Kg	294.00	254.28	247.98	-15.65	-2.48
19. Pepper	Kg	2812.22	2737.63	2751.31	-2.17	0.50
Vegetables-						
20. Ash Plantain	Kg	467.26	284.28	293.13	-37.27	3.11
21. Carrot	Kg	945.37	363.06	635.45	-32.78	75.03
22. Snake Gourd	Kg	465.04	425.16	424.60	-8.69	-0.13
23. Tomatoes	Kg	921.51	481.23	344.49	-62.62	-28.42
24. Capsicum	Kg	1137.72	860.27	1335.43	17.38	55.23
25. Beetroot	Kg	647.48	591.49	551.03	-14.90	-6.84
26. Beans	Kg	808.23	533.77	583.84	-27.76	9.38
Fruits						
27. Banana	Kg	291.76	262.91	255.34	-12.48	-2.88
28. Papaw	Kg	254.37	261.11	269.78	6.06	3.32
29. Mangoes	Each	155.15	131.93	214.64	38.34	62.70
Fresh Fish –						
30. Seer	Kg	3307.09	3293.02	2978.77	-9.93	-9.54
31.Talapath	Kg	2672.18	2813.45	2588.79	-3.12	-7.99
32.Paraw	Kg	2237.72	2370.90	1991.39	-11.01	-16.01
Dried Fish -						
33.Katta	Kg	2232.52	2104.59	2115.36	-5.25	0.51
34. Sprats	Kg	1331.71	1203.41	1133.76	-14.86	-5.79
Fuel -						
35. Kerosene Oil	Lt	255.50	184.25	183.00	-28.38	-0.68
36. Petrol (CPC & IOC)	Lt	369.75	309.00	309.00	-16.43	0.00
37. Diesel (CPC & IOC)	Lt	361.75	286.00	286.00	-20.94	0.00
38. Gas- Avg.	12.5kg	4372.49	3687.50	3687.50	-15.67	0.00
	Litro	12.5kg	4249.99	3690.00	-13.18	0.00
	Laughs	12.5kg	4740.00	3680.00	-22.36	0.00

The Vision of DCS

“To be the leader in the region in producing timely statistical information to achieve the country’s development goals.”

The Mission of DCS

“Making contribution in the socioeconomic development of the country by providing accurate timely statistics, more Effectively by means of new technology, and utilising the services of dedicated staff under a strategic leadership to become a prosperous nation in the globalised environment.”

 Department of Census & Statistics,
Sankyana Mandiraya
No. 306/71, Polduwa
Road, Battaramulla

 info@statistics.gov.lk
 +94 11 2147000
 +94 11 2147011
 statistics.gov.lk

This publication is produced by the Prices and Wages Division
 5th floor, Department of Census and Statistics
 prices@statistics.gov.lk
 +94 11 2147414  +94 11 2877945