



**QUARTERLY REPORT OF THE
SRI LANKA LABOUR FORCE
SURVEY**

Quarterly Report – 2015

Fourth Quarter

**DEPARTMENT OF CENSUS & STATISTICS
MINISTRY OF NATIONAL POLICIES AND ECONOMIC
AFFAIRS**

ISBN 978 – 955 – 577 – 964 – 7

Preface

In the past, information on labour force characteristics, employment and unemployment etc. were collected through labour force and socio - economic surveys conducted at five yearly time intervals. However, the employment and unemployment data are required at very short intervals to monitor the programs made in the employment generating policies of the government. Therefore, to satisfy this need, the Department of Census and Statistics (DCS) designed a labour force survey on a quarterly basis, to measure the levels and trends of employment, unemployment and labour force in Sri Lanka on a continuous basis. This survey was commenced from the first quarter of 1990 and this report is the ninety fifth in the series of quarterly reports published so far.

Current survey concepts and methods are very similar to those introduced at the beginning of the survey in 1990. However, some changes were made over the years to improve the accuracy and usefulness of the data. The significant revisions were made on the labour force survey questionnaire in 1996, 2006 and the latest revision was in 2013. The revised version was introduced for the survey conducted in 2013 First quarter, and this report consists with statistics using new concepts and classifications.

The field work of the survey for the fourth quarter 2015 was done in October, November and December in year 2015. This survey covered the whole country. A nationally representative annual sample of about 25,000 housing units have been selected for the survey in 2015. This report is based on a quarterly sample of 6,250 housing units.

*Dr. A.J. Satharasinghe
Director General of Census & Statistics*

*Department of Census & Statistics,
"Sankhyana Mandiraya",
306/71,
Polduwa Road,
Baththaramulla
02.05.2016.*

Acknowledgements

This report is ninety sixth in the series of the Quarterly Labour Force Survey which was commenced from the first quarter 1990 and is being continued by the Department of the Census and statistics.

Planning and execution of the survey was done by staff of the Sample Survey Division under the direction of Mr. H.R.Dias, Director, Sample Surveys Division and Mr. M.D. Sunil Senanayake Deputy Director, Sample Surveys Division.

The survey activities were organized and supervised by Mrs. W.A.C.Wijebandara, Mr. K.S.R.L.Senadeera, Mrs. M.D.D.D.Deepawansa, Mrs. C.Jayawickrama, Mr. A.K.D.C.N.S.Karunaratna, Mr. K.Weerasiri, Mrs. U.S.Dilrukshi, Mr. M.L.K.P.Kumara, Ms. M.W.L.C.M. Chandrarathne Statisticians & Senior Statistician, of the sample surveys division and Heads of statistics divisions in each district.

The computer data processing and final tabulations were done by Mrs. W.A.S.M.P. Gunasekara, Mr. A.M.A.E.Atapattu, Statistical Officers and Mrs. A.N. Ekanayake, Statistical Assistant of the Sample Surveys Division, under the supervision of Mrs. W.A.C.Wijebandara, Statistician using microcomputers. The statistical officers, statistical assistants, Information and Communication Technology assistants, Data Entry Officers/Coding clerks and development officers (iii), of the sample survey division are acknowledged for their valuable contribution during the whole survey process.

Developing of sample selection programme and its related computer software was done by Mr. K.M.R. Wickramasinghe, AD (ICT).

This publication was organized and prepared by Mrs. W.A.C. Wijebandara and Mr. A.K.D.C.N.S.Karunaratna Statisticians, Sample Surveys Division, assisted by Mrs. W.A.S.M.P. Gunasekara, Mr. A.M.A.E.Atapattu, Statistical officers. Mr. M.G. Perera, Statistical officer and Mrs. Asanthi Ekanayaka, Statistical Assistant assisted at the editing stage.

The Information & Communication Technology Division, under the direction of Mr. S.A.S. Bandulasena, Additional Director General (ICT) and under the supervision of Mr. P.M.R.Fernando, Deputy Director (ICT) and Mr. W.H.P.N. Weerasiri Deputy Director (ICT), was responsible for the survey data entry and preparation of data entry and computer edits programmes. Data entry was decentralized and manual editing, coding & data entry were done by responsible officers at district secretariats in all districts.

District field staff of the Department who worked on the survey deserves a special word of thanks. They include District Deputy Directors/ Senior Statisticians/ Statisticians for supervision and field Statistical Officers, who worked hard at the data collection stage, to make this survey a success. Printing of the report was done at the staff of Printing Division, under the supervision of Mr. M.J.M Fernando, Statistician.

Finally, I wish to express my appreciation to all the respondents of the survey for their valuable cooperation.

Sri Lanka Labour Force Survey
Summary Statistics on Labour Force Characteristics
2015 4th Quarter
(All Island)

15 years & over population

	Total	Male	Female	Urban	Rural
Population (15 years & over)	16,694,379	7,648,182	9,046,197	2,980,914	13,713,465
Labour force in this age group	8,947,493	5,767,293	3,180,200	1,501,982	7,445,511
Labour force participation rate	53.6	75.4	35.2	50.4	54.3
Employed population	8,558,431	5,619,829	2,938,601	1,439,176	7,119,255
Employment rate	95.7	97.4	92.4	95.8	95.6
Unemployed population	389,062	147,463	241,599	62,806	326,257
Unemployment rate	4.3	2.6	7.6	4.2	4.4
Not in labour force	7,746,886	1,880,889	5,865,997	1,478,933	6,267,954

20 years & over population

	Total	Male	Female	Urban	Rural
Population (20 years & over)	15,001,215	6,799,543	8,201,672	2,703,138	12,298,076
Labour force in this age group	8,700,111	5,598,219	3,101,892	1,466,835	7,233,276
Labour force participation rate	58.0	82.3	37.8	54.3	58.8
Employed population	8,362,796	5,480,669	2,882,127	1,407,539	6,955,257
Employment rate	96.1	97.9	92.9	96.0	96.2
Unemployed population	337,315	117,550	219,765	59,296	278,019
Unemployment rate	3.9	2.1	7.1	4.0	3.8
Not in labour force	6,301,104	1,201,324	5,099,780	1,236,303	5,064,801

Selected Labour Force Indicators ...

Indicator	Year										
	2013*	2014*	2011**	2012**	2013**	2014**	2014Q4**	2015Q1**	2015Q2**	2015Q3**	2015Q4**
Labour force participation rate											
By Gender											
Total	54.2	53.6	53.0	52.6	53.8	53.3	52.9	53.6	54.3	53.8	53.6
Male	75.0	74.8	74.0	75.0	74.9	74.6	74.3	73.9	74.8	74.7	75.4
Female	36.3	35.2	34.4	32.9	35.6	34.7	34.5	36.4	36.7	35.7	35.2
By residential sector											
Total	54.2	53.6	53.0	52.6	53.8	53.3	52.9	53.6	54.3	53.8	53.6
Urban	48.0	49.0	47.8	48.4	47.8	48.9	48.8	46.4	49.5	48.5	50.4
Rural	55.5	54.6	53.8	53.5	55.0	54.2	53.7	55.1	55.3	54.9	54.3
Unemployment Rate											
By Gender											
Total	4.3	4.3	4.2	4.0	4.4	4.3	4.4	4.7	4.5	5.0	4.3
Male	3.2	3.1	2.7	2.8	3.2	3.1	2.9	2.9	3.0	3.5	2.6
Female	6.4	6.4	7.0	6.2	6.6	6.5	7.2	7.9	7.2	7.8	7.6
By selected age Group (Year)											
20 – 29	13.0	13.5	12.3	11.3	13.0	13.7	13.5	14.1	14.7	14.9	13.0
20 – 24	19.3	20.0	17.7	16.8	19.2	20.0	21.2	20.4	21.3	21.7	15.4
25 – 29	7.5	8.1	7.6	6.6	7.5	8.3	6.9	8.7	9.2	8.8	10.9
By selected educational level : G.C.E (A/L) & above											
Total	8.4	7.9	9.0	7.5	8.6	8.1	8.8	10.1	8.5	10.1	8.1
Male	5.6	5.1	5.4	4.5	5.7	5.3	5.6	5.3	3.7	6.0	3.8
Female	11.3	10.8	13.1	10.8	11.6	11.0	12.0	14.3	12.9	14.1	12.3
Employed population											
By Gender											
Total	8,070,542	8,071,126	8,186,305	8,118,362	8,417,674	8,423,994	8,395,762	8,502,270	8,600,629	8,554,179	8,558,431
Male	5,233,167	5,292,105	5,452,723	5,469,759	5,498,815	5,548,131	5,534,061	5,488,213	5,552,614	5,605,800	5,619,829
Female	2,837,375	2,779,021	2,733,582	2,648,603	2,918,859	2,875,862	2,861,702	3,014,057	3,048,015	2,948,378	2,938,601
By industry (Percentage)											
Total	8,070,542	8,071,126	8,186,305	8,118,362	8,417,674	8,423,994	8,395,762	8,502,270	8,600,629	8,554,179	8,558,431
%	100.0	100.0	100.0	100.0	100.0	100.0	100.0	100.0	100.0	100.0	100.0
Agriculture	2,390,884	2,290,367	2,699,244	2,513,673	2,504,310	2,399,629	2,552,541	2,500,322	2,443,301	2,339,633	2,352,971
%	29.6	28.4	33.0	31.0	29.8	28.5	30.4	29.4	28.4	27.4	27.5
Industry	2,125,376	2,149,674	1,976,711	2,117,286	2,202,159	2,229,810	2,134,233	2,200,481	2,206,211	2,325,316	2,166,914
%	26.3	26.6	24.1	26.1	26.2	26.5	25.4	25.9	25.7	27.2	25.3
Services	3,554,282	3,631,085	3,510,350	3,487,403	3,711,204	3,794,554	3,708,988	3,801,467	3,951,118	3,889,230	4,038,546
%	44.0	45.0	42.9	43.0	44.1	45.0	44.2	44.7	45.9	45.5	47.2
By no. of hours worked per week (percentage)											
Total	100.0	100.0	100.0	100.0	100.0	100.0	100.0	100.0	100.0	100.0	100.0
0#	5.2	5.2	5.2	4.5	5.2	5.2	3.8	2.0	10.4	4.9	4.6
1 – 9	1.8	1.3	1.7	1.2	1.8	1.3	1.3	1.0	2.3	1.5	1.8
10 – 39	27.0	27.0	29.9	26.0	27.4	27.5	24.5	25.4	30.7	26.5	25.7
40 & above	66.0	66.4	63.1	68.3	65.6	66.0	70.4	71.6	56.6	67.1	67.9

has a job but not at work during the reference week

* Excluding Northern Province

**Whole island covered

Note : Working age population considered as (age 15 & over population)

CONTENTS

Page No.

Preface	iii
Acknowledgements	v
Highlights	vii
Summary Statistics	viii
Contents	ix
Labour Force	1
Employment	2
Unemployment	3

Tables

Table No.

1.	Historical table of Labour Force Status (current) of the Household Population, 15 years of Age and over - Both Sexes	4
1A.	Historical table of Labour Force Status (current) of the Household Population, 15 years of Age and over – Male	5
1B.	Historical table of Labour Force Status (current) of the Household Population, 15 years of Age and over – Female	5
2.	Labour Force Status (current) of the Household Population 15 years of Age and over, by Age - Both Sexes	6
2A.	Labour Force Status (current) of the Household Population 15 years of Age and over, by Age – Male	7
2B.	Labour Force Status (current) of the Household Population 15 years of Age and over, by Age – Female	7
3.	Historical table of Currently Employed persons by Age Groups (percentage) - Both Sexes	8
3A.	Historical table of Currently Employed persons by Age Groups (percentage) – Male	8
3B.	Historical table of Currently Employed persons by Age Groups (percentage) – Female	8
4.	Historical table of Currently Employed persons by Level of Education (percentage) - Both Sexes	9
4A.	Historical table of Currently Employed persons by Level of Education (percentage) – Male	9
4B.	Historical table of Currently Employed persons by Level of Education (percentage) – Female	9
5.	Historical table of Currently Employed persons by Employment Status (percentage) - Both Sexes	10
5A.	Historical table of Currently Employed persons by Employment Status (percentage) – Male	10
5B.	Historical table of Currently Employed persons by Employment Status (percentage) – Female	10
6.	Currently employed persons by Industry group (Based on ISIC Rev.4) – Both sexes	11
6A.	Currently employed persons by Industry group (Based on ISIC Rev.4) – Male	12
6B.	Currently employed persons by Industry group (Based on ISIC Rev.4) – Female	13
6C.	Historical table of currently employed population by major industry group - Both sexes	14
6D.	Historical table of currently employed population by major industry group (percentage) - Both sexes	14
7.	Currently employed persons by Occupation group (Based on ISCO 08) - Both sexes	15
7A.	Currently employed persons by Occupation group (Based on ISCO 08) – Male	16
7B.	Currently employed persons by Occupation group (Based on ISCO 08) – Female	16
8.	Currently Employed persons by hours per week actually worked at the main job and Major Industrial group (percentage) - Both Sexes	17
9.	Historical table of Currently Unemployed persons by Age Groups (percentage) - Both Sexes	18
9A.	Historical table of Currently Unemployed persons by Age Groups (percentage) – Male	18
9B.	Historical table of Currently Unemployed persons by Age Groups (percentage) – Female	18
10.	Historical table of Currently Unemployed persons by Level of Education (percentage) - Both Sexes	19
10A.	Historical table of Currently Unemployed persons by Level of Education (percentage) – Male	19
10B.	Historical table of Currently Unemployed persons by Level of Education (percentage) – Female	19
11.	Currently Unemployed Persons by Sex and Duration of Unemployment	20
12.	Standard error and coefficient of variation of selected variables	21

Appendix 1: Explanatory Notes

Appendix 2: Alternative estimates of employment, unemployment and labour force characteristics

Introduction

Highlights

- Labour force participation rate is 53.6% for the Fourth Quarter of 2015.
- Unemployment rate for the survey period is 4.3%.

Inside

- Labour Force 1
- Employment 2
- Unemployment 3
- Selected Labour Force Indicators 4

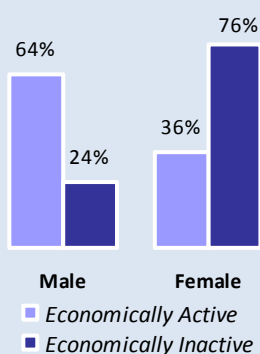


Figure 1 : Distribution of Economically active/Inactive population- Fourth quarter -2015

Sri Lanka Labour Force Survey (LFS) is designed to measure the levels and trends of employment, unemployment and labour force in Sri Lanka. LFS has been conducted quarterly, since the first quarter of 1990.

This bulletin contains labour force, employment and unemployment statistics for the fourth quarter 2015 based on the data collected in October, November and December covering the whole country.

Labour Force

This is the currently economically active population. Which is the number of persons (age 15 years & above) who are employed or unemployed during the reference week.

Labour force participation rate (LFPR)

Labour force population expressed as a percentage of the population, age 15 years and over.

Labour Force

(Economically Active Population)

Table 1 : Economically active population by gender and sector – Fourth Quarter 2015

Sector	Economically active population					
	Total	%	Male	%	Female	%
Sri Lanka	8,947,493	100.0	5,767,293	64.5	3,180,200	35.5
Urban	1,501,982	100.0	1,011,366	67.3	490,615	32.7
Rural	7,012,924	100.0	4,527,537	64.6	2,485,388	35.4
Estate	432,587	100.0	228,390	52.8	204,197	47.2

Table 2 : Economically inactive population by gender and sector – Fourth Quarter 2015

Sector	Economically inactive population					
	Total	%	Male	%	Female	%
Sri Lanka	7,746,886	100.0	1,880,889	24.3	5,865,997	75.7
Urban	1,478,933	100.0	377,468	25.5	1,101,464	74.5
Rural	6,024,246	100.0	1,431,805	23.8	4,592,440	76.2
Estate	243,708	100.0	71,616	29.4	172,092	70.6

Table 3 : LFPR by gender and year

Year	Total	Male	Female
2011	53.0	74.0	34.4
2012	52.6	75.0	32.9
2013	53.8	74.9	35.6
2014	53.3	74.6	34.7
2013 Q4	53.0	74.4	34.7
2014 Q4	52.9	74.3	34.5
2015 Q1	53.6	73.9	36.4
2015 Q2	54.3	74.8	36.7
2015 Q3	53.8	74.7	35.7
2015 Q4	53.6	75.4	35.2

Table 3 provides the information on LFPRs since year 2011. Referring the Table 3, It is important to note that, male participation to the labour force is always higher than that of females.

Considering the Table 4, the distribution of LFPR by age group and by gender depicts high male participation compared to female in all age groups. The highest participation rate for male was reported from age group 35–39 years (96.4%), while that for females was reported from the age group of 40 – 44 years (52.4%).

According to the Table 1, the estimated economically active population is about 9.0 million in the fourth quarter 2015. Of which 64.5 percent are males and 35.5 percent are females. Out of the economically inactive population 24.3 percent are males and 75.7 percent are females (Table 2).

Table 4 : LFPR by age group and gender - Fourth Quarter 2015

Age group (Years)	Total	Male	Female
Sri Lanka	53.6	75.4	35.2
15 - 19	14.6	19.9	9.3
20 - 24	56.0	74.7	40.5
25 - 29	63.6	94.3	41.5
30 - 34	65.4	94.8	42.1
35 - 39	69.3	96.4	45.6
40 - 44	72.2	95.3	52.4
45 - 49	71.4	95.1	49.6
50 - 54	66.9	93.1	44.0
55 - 59	61.5	86.3	41.2
60+	30.4	49.9	14.6

Definition of 'Employed'

Persons, who worked at least one hour during the reference period, as paid employees, employers, own account workers or contributing family workers are said to be employed. This also includes persons with a job but not at work during the reference period.

Reference Period :

Previous week of the survey week

The Employment Rate

The proportion of employed population to the total labour force.

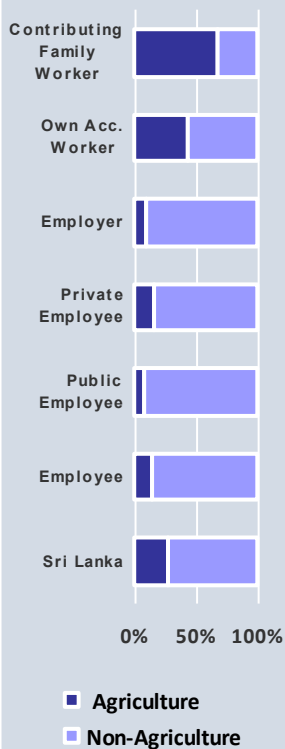


Figure 2: Distribution of employed population by employment status and Agriculture/ Non-Agriculture sector - Fourth Quarter 2015

Employment ...

Table 5: Distribution of Employed population by main industry
Fourth Quarter 2014 – Fourth Quarter 2015)

Quarter	Sri Lanka	Major Industry Group		
		Agriculture	Industries	Services
2014 Q4 (No.)	8,395,762	2,552,541	2,134,233	3,708,988
(%)	100.0	30.4	25.4	44.2
2015 Q1 (No.)	8,502,270	2,500,322	2,200,481	3,801,467
(%)	100.0	29.4	25.9	44.7
2015 Q2 (No.)	8,600,629	2,443,301	2,206,211	3,951,118
(%)	100.0	28.4	25.7	45.9
2015 Q3 (No.)	8,554,17	2,339,633	2,325,316	3,889,230
(%)	100.0	27.4	27.2	45.5
2015 Q4 (No.)	8,558,431	2,352,971	2,166,914	4,038,546
(%)	100.0	27.5	25.3	47.2

Table 5 shows the percentage distribution of employed population by main industry from fourth quarter 2014 to fourth quarter 2015. During fourth quarter of 2015, the total number of employed persons in Sri Lanka is estimated as about 8.6 million. Of which, about 47.2 percent engaged in Services sector, 25.3 percent in Industries sector and 27.5 percent in Agriculture sector.

Table 6: Distribution of employed population by employment status in Agriculture and Non-Agriculture sectors – Fourth Quarter 2015

Employment Status	Sri Lanka		Sector			
			Agriculture		Non-Agriculture	
	No.	%	No.	%	No.	%
Sri Lanka	8,558,431	100.0	2,352,971	27.5	6,205,460	72.5
Employee	4,893,832	100.0	710,694	14.5	4,183,138	85.5
Public	1,295,629	100.0	108,287	8.4	1,187,342	91.6
Private	3,598,203	100.0	602,407	16.7	2,995,796	83.3
Employer	280,055	100.0	24,842	8.9	255,213	91.1
Own Account Worker	2,698,483	100.0	1,156,372	42.9	1,542,111	57.1
Contributing Family Worker	686,061	100.0	461,063	67.2	224,998	32.8

These figures are to be treated with caution as the corresponding CV (Coefficient of variation) values are high.

Table 7: Percentage distribution of Employed population by main industry & gender – Fourth Quarter

Major Industry Group	Sri Lanka	Gender	
		Male	Female
Sri Lanka	100.0	100.0	100.0
Agriculture	27.5	25.7	30.9
Industry	25.3	25.5	24.9
Services	47.2	48.8	44.2

Main industry categories and sub sectors

Agriculture

1. Agriculture Forestry and Fishery (A)

Industries

1. Mining & Quarrying (B)
2. Manufacturing (C)
3. Construction, Electricity, gas, steam and air conditioning supply, Water supply, sewerage, waste management and remediation activities (D, E, F)

Services

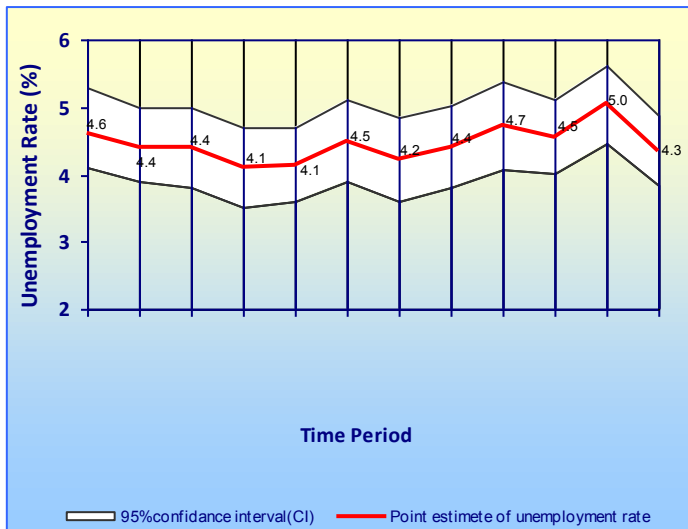
1. Wholesale and retail trade, repair of motor vehicles and motor cycles (G)
2. Transportation and storage (H)
3. Accommodation and food services activities (I)
4. Information and communication (J)
5. Financial and insurance activities (K)
6. Professional, scientific and technical activities (M)
7. Administrative and support service activities (N)
8. Public administration and defense compulsory social security (O)
9. Education (P)
10. Human health and social work activities (Q)
11. Other service activities (S)
12. Activities of households as employers; undifferentiated goods and services - producing activities of households for own use (T)
13. Real estate activities (L) Arts, entertainment and recreation (R) Activities of extra territorial organizations & bodies (U)

As could be seen from the Figure 2 & Table 6 contributing family workers are highly concentrated in Agriculture sector.

Table 7 depicts the percentage distribution of male and female employed population by main industries. Highest employment share is in service sector and this is true for both male & female, while the lowest shares are for industry sector. Among employed females 30.9 percent is in agriculture sector while this share is 25.7 percent for males.

Unemployment ...

Figure 3: Unemployment rates and its 95% confidence intervals (2013Q1 - 2015Q4)



¹Sampling error : When a sample, rather than the entire population, is surveyed, estimates differ from the true values of population they represent. This difference, or sampling error, occurs by chance, and its variability is measured by the sampling error of the estimate.

For more details, please refer the explanatory note given under the labour force link in the DCS website; www.statistics.gov.lk

Table 8: Unemployment rate by age group and gender – Fourth Quarter 2015

Age group (Years)	Sri Lanka	Gender	
		Male	Female
Sri Lanka	4.3	2.6	7.6
15–24	16.7	13.4	22.2
25–29	10.9	4.8	20.8
Over 30	1.7	0.8	3.5

These figures are to be treated with caution as the corresponding CV (Coefficient of variation) values are high.

As can be seen from Table 8, overall unemployment rate reported for female is 7.6 percent and it is 2.6 percent for male. Youth unemployment rate (age 15 – 24 years) corresponding to the fourth quarter 2015 is 16.7 percent and that reports the highest unemployment rate among all other age groups. Further rates for both males and females are 13.4 and 22.2 percent respectively for age group 15 – 24.

The survey results further revealed that the unemployment among females is higher than that of males, in all age groups. Youth and female unemployment contribute more to the overall unemployment of the country.

The highest unemployment rate is reported from the G.C.E (A/L) and above group which is about 8.1 percent. Corresponding percentages are 3.8 percent and 12.3 percent for males and females respectively. Female unemployment rates are higher than those of males in all levels of education.

Table 9: Unemployment rate by level of education – Fourth Quarter 2015

Level of Education	Unemployment Rate (%)		
	Sri Lanka	Male	Female
Sri Lanka	4.3	2.6	7.6
Below GCE O/L	2.7	1.8	4.6
GCE O/L	6.0	4.4	8.8
GCE A/L & above	8.1	3.8	12.3

This further shows that the problem of unemployment is more acute in the case of educated females than educated males, which was observed consistently over the results of previous survey rounds as well.

Definition of 'Unemployed'

Persons available and/or looking for work, and who did not work and taken steps to find a job during last four weeks and ready to accept a job given a work opportunity within next two weeks are said to be unemployed.

The Unemployment Rate

The proportion of unemployed population to the total labour force.

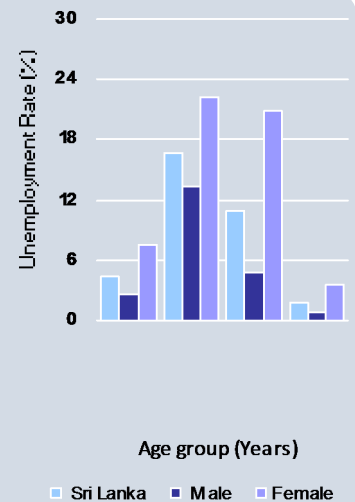


Figure 3: Unemployment rate by age group and gender – Fourth Quarter 2015

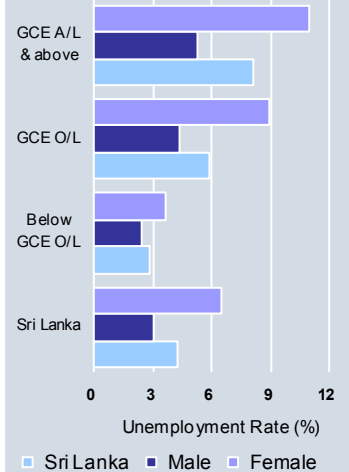


Figure 4: Unemployment rate by level of education and gender – Fourth Quarter 2015

TABLE 1 - HISTORICAL TABLE OF LABOUR FORCE STATUS (CURRENT) OF THE HOUSEHOLD POPULATION, 15 YEARS OF AGE AND OVER - BOTH SEXES

NATIONAL LEVEL DATA								
YEAR	HOUSEHOLD POPULATION (15 YEARS & OVER)	LABOUR FORCE						NOT IN LABOUR FORCE NUMBER
		TOTAL LABOUR FORCE	LABOUR FORCE PARTICI: RATE(%)	EMPLOYED		UNEMPLOYED		
				NUMBER	RATE (% TO TOTAL LABOUR FORCE)	NUMBER	RATE (% TO TOTAL LABOUR FORCE)	
2008 ¹	14,626,833	8,061,725	55.1	7,628,683	94.6	433,042	5.4	6,565,107
2009 ¹	14,876,264	8,051,089	54.1	7,579,835	94.1	471,254	5.9	6,825,175
2010 ¹	15,166,285	8,096,477	53.4	7,696,142	95.1	400,335	4.9	7,069,808
2011 ²	16,122,111	8,543,776	53.0	8,186,305	95.8	357,471	4.2	7,578,335
2012 ²	16,081,285	8,454,364	52.6	8,118,362	96.0	336,002	4.0	7,626,921
2013 ²	16,359,761	8,802,113	53.8	8,417,674	95.6	384,439	4.4	7,557,648
2014 ²	16,531,768	8,804,548	53.3	8,423,994	95.7	380,554	4.3	7,727,220
2013Q4 ²	16,364,677	8,670,987	53.0	8,319,680	95.9	351,307	4.1	7,693,690
2014Q4 ²	16,607,868	8,782,867	52.9	8,395,762	95.6	387,104	4.4	7,825,001
2015Q1 ²	16,648,811	8,924,716	53.6	8,502,270	95.3	422,446	4.7	7,724,095
2015Q2 ²	16,596,533	9,009,970	54.3	8,600,629	95.5	409,341	4.5	7,586,563
2015Q3 ²	16,742,309	9,008,135	53.8	8,554,179	95.0	453,956	5.0	7,734,175
2015Q4 ²	16,694,379	8,947,493	53.6	8,558,431	95.7	389,062	4.3	7,746,886

¹ - Excluding Northern province

² - All the districts are included

**TABLE 1A - HISTORICAL TABLE OF LABOUR FORCE STATUS (CURRENT) OF THE HOUSEHOLD POPULATION,
15 YEARS OF AGE AND OVER - MALE**

YEAR	HOUSEHOLD POPULATION (15 YEARS & OVER)	LABOUR FORCE						NOT IN LABOUR FORCE NUMBER
		TOTAL LABOUR FORCE	LABOUR FORCE PARTICI: RATE(%)	EMPLOYED		UNEMPLOYED		
				NUMBER	RATE (% TO TOTAL LABOUR FORCE)	NUMBER	RATE (% TO TOTAL LABOUR FORCE)	
2008 ¹	6,848,600	5,212,933	76.1	5,018,954	96.3	193,978	3.7	1,635,668
2009 ¹	6,925,821	5,173,106	74.7	4,949,825	95.7	223,281	4.3	1,752,715
2010 ¹	7,078,246	5,310,872	75.0	5,125,763	96.5	185,108	3.5	1,767,374
2011 ²	7,570,144	5,605,446	74.0	5,452,723	97.3	152,723	2.7	1,964,698
2012 ²	7,508,356	5,629,617	75.0	5,469,759	97.2	159,858	2.8	1,878,740
2013 ²	7,577,344	5,677,815	74.9	5,498,815	96.8	179,000	3.2	1,899,529
2014 ²	7,676,876	5,728,383	74.6	5,548,131	96.9	180,252	3.1	1,948,493
2013Q4 ²	7,532,784	5,605,495	74.4	5,451,097	97.2	154,397	2.8	1,927,290
2014Q4 ²	7,670,186	5,698,293	74.3	5,534,061	97.1	164,232	2.9	1,971,893
2015Q1 ²	7,648,271	5,650,690	73.9	5,488,213	97.1	162,477	2.9	1,997,581
2015Q2 ²	7,657,435	5,726,609	74.8	5,552,614	97.0	173,995	3.0	1,930,826
2015Q3 ²	7,773,350	5,810,483	74.7	5,605,800	96.5	204,682	3.5	1,962,867
2015Q4 ²	7,648,182	5,767,293	75.4	5,619,829	97.4	147,463	2.6	1,880,889

**TABLE 1B - HISTORICAL TABLE OF LABOUR FORCE STATUS (CURRENT) OF THE HOUSEHOLD POPULATION,
15 YEARS OF AGE AND OVER - FEMALE**

YEAR	HOUSEHOLD POPULATION (15 YEARS & OVER)	LABOUR FORCE						NOT IN LABOUR FORCE NUMBER
		TOTAL LABOUR FORCE	LABOUR FORCE PARTICI: RATE(%)	EMPLOYED		UNEMPLOYED		
				NUMBER	RATE (% TO TOTAL LABOUR FORCE)	NUMBER	RATE (% TO TOTAL LABOUR FORCE)	
2008 ¹	7,778,232	2,848,793	36.6	2,609,729	91.6	239,064	8.4	4,929,440
2009 ¹	7,950,443	2,877,983	36.2	2,630,010	91.4	247,973	8.6	5,072,460
2010 ¹	8,088,039	2,785,605	34.4	2,570,379	92.3	215,226	7.7	5,302,434
2011 ²	8,551,967	2,938,329	34.4	2,733,582	93.0	204,748	7.0	5,613,637
2012 ²	8,572,929	2,824,747	32.9	2,648,603	93.8	176,144	6.2	5,748,181
2013 ²	8,782,417	3,124,298	35.6	2,918,859	93.4	205,439	6.6	5,658,119
2014 ²	8,854,892	3,076,165	34.7	2,875,862	93.5	200,303	6.5	5,778,727
2013Q4 ²	8,831,893	3,065,493	34.7	2,868,583	93.6	196,909	6.4	5,766,400
2014Q4 ²	8,937,682	3,084,574	34.5	2,861,702	92.8	222,872	7.2	5,853,108
2015Q1 ²	9,000,540	3,274,026	36.4	3,014,057	92.1	259,969	7.9	5,726,514
2015Q2 ²	8,939,097	3,283,361	36.7	3,048,015	92.8	235,347	7.2	5,655,736
2015Q3 ²	8,968,959	3,197,652	35.7	2,948,378	92.2	249,274	7.8	5,771,307
2015Q4 ²	9,046,197	3,180,200	35.2	2,938,601	92.4	241,599	7.6	5,865,997

¹ - Excluding Northern province

² - All the districts are included

**TABLE 2 - LABOUR FORCE STATUS (CURRENT) OF THE HOUSEHOLD POPULATION 15 YEARS OF AGE AND OVER ,
BY AGE - BOTH SEXES**

(2015 4th Quarter)

AGE	HOUSEHOLD POPULATION (15 YEARS & OVER)	LABOUR FORCE						NOT IN LABOUR FORCE NUMBER
		TOTAL LABOUR FORCE	LABOUR FORCE PARTICI: RATE(%)	EMPLOYED		UNEMPLOYED		
				NUMBER	RATE	NUMBER	RATE	
ALL AGES	16,694,379	8,947,493	53.6	8,558,431	95.7	389,062	4.3	7,746,886
15 - 19 YRS	1,693,165	247,382	14.6	195,635	79.1	51,747	20.9	1,445,783
20 - 24 YRS	1,399,977	784,451	56.0	663,502	84.6	120,949	15.4	615,527
25 - 29 YRS	1,396,957	888,034	63.6	791,410	89.1	96,624	10.9	508,923
30 - 39 YRS	3,217,021	2,166,228	67.3	2,093,497	96.6	72,731	3.4	1,050,793
40 + YRS	8,987,259	4,861,398	54.1	4,814,387	99.0	47,011	1.0	4,125,861

**TABLE 2A - LABOUR FORCE STATUS (CURRENT) OF THE HOUSEHOLD POPULATION 15 YEARS OF AGE AND OVER ,
BY AGE - MALE**

(2015 4th Quarter)

AGE	HOUSEHOLD POPULATION (15 YEARS & OVER)	LABOUR FORCE						NOT IN LABOUR FORCE NUMBER
		TOTAL LABOUR FORCE	LABOUR FORCE PARTICI: RATE(%)	EMPLOYED		UNEMPLOYED		
				NUMBER	RATE (% TO TOTAL LABOUR FORCE)	NUMBER	RATE (% TO TOTAL LABOUR FORCE)	
ALL AGES	7,648,182	5,767,293	75.4	5,619,829	97.4	147,463	2.6	1,880,889
15 - 19 YRS	848,639	169,074	19.9	139,161	82.3	29,913	17.7	679,566
20 - 24 YRS	634,596	474,216	74.7	417,609	88.1	56,607	11.9	160,380
25 - 29 YRS	583,550	550,275	94.3	523,988	95.2	26,287	4.8	33,275
30 - 39 YRS	1,461,597	1,397,226	95.6	1,381,673	98.9	15,553	1.1	64,371
40 + YRS	4,119,800	3,176,501	77.1	3,157,398	99.4	19,104	0.6	943,298

**TABLE 2B - LABOUR FORCE STATUS (CURRENT) OF THE HOUSEHOLD POPULATION 15 YEARS OF AGE AND OVER ,
BY AGE - FEMALE**

(2015 4th Quarter)

AGE	HOUSEHOLD POPULATION (15 YEARS & OVER)	LABOUR FORCE						NOT IN LABOUR FORCE NUMBER
		TOTAL LABOUR FORCE	LABOUR FORCE PARTICI: RATE(%)	EMPLOYED		UNEMPLOYED		
				NUMBER	RATE (% TO TOTAL LABOUR FORCE)	NUMBER	RATE (% TO TOTAL LABOUR FORCE)	
ALL AGES	9,046,197	3,180,200	35.2	2,938,601	92.4	241,599	7.6	5,865,997
15 - 19 YRS	844,525	78,308	9.3	56,474	72.1	21,834	27.9	766,217
20 - 24 YRS	765,381	310,234	40.5	245,892	79.3	64,342	20.7	455,147
25 - 29 YRS	813,407	337,759	41.5	267,421	79.2	70,338	20.8	475,648
30 - 39 YRS	1,755,424	769,002	43.8	711,824	92.6	57,178	7.4	986,422
40 + YRS	4,867,460	1,684,897	34.6	1,656,990	98.3	27,907	1.7	3,182,563

These figures are to be treated with caution as the corresponding CV (Coefficient of variation) values are high.

**TABLE 3 - HISTORICAL TABLE OF CURRENTLY EMPLOYED PERSONS BY AGE GROUPS
(PERCENTAGE) - BOTH SEXES**

Year	All Ages	Age Groups				
		15 - 19 YRS	20 - 24 YRS	25 - 29 YRS	30 - 39 YRS	40+ YRS
2008 ¹	100.0	3.4	9.9	11.7	24.0	51.0
2009 ¹	100.0	3.4	8.6	11.5	24.4	52.1
2010 ¹	100.0	3.0	8.5	10.9	24.0	53.5
2011 ²	100.0	3.1	8.6	11.0	24.3	53.0
2012 ²	100.0	2.5	8.3	11.0	25.2	53.0
2013 ²	100.0	2.7	7.9	10.1	24.8	54.5
2014 ²	100.0	2.4	7.2	9.7	25.2	55.5
2013Q4 ²	100.0	2.4	7.4	9.6	25.6	55.0
2014Q4 ²	100.0	2.3	7.3	10.0	25.0	55.4
2015Q1 ²	100.0	2.5	7.3	9.8	24.0	56.4
2015Q2 ²	100.0	2.2	7.0	9.8	25.4	55.5
2015Q3 ²	100.0	1.9	7.7	10.0	24.0	56.4
2015Q4 ²	100.0	2.3	7.8	9.2	24.5	56.3

**TABLE 3A - HISTORICAL TABLE OF CURRENTLY EMPLOYED PERSONS BY AGE GROUPS
(PERCENTAGE) - MALE**

Year	All Ages	Age Groups				
		15 - 19 YRS	20 - 24 YRS	25 - 29 YRS	30 - 39 YRS	40+ YRS
2008 ¹	100.0	3.6	9.7	11.9	24.1	50.7
2009 ¹	100.0	3.5	8.4	11.8	24.3	52.0
2010 ¹	100.0	3.1	8.2	11.3	24.1	53.3
2011 ²	100.0	3.2	8.6	11.3	24.3	52.5
2012 ²	100.0	2.7	8.3	11.2	25.2	52.6
2013 ²	100.0	2.9	7.8	10.2	25.0	54.1
2014 ²	100.0	2.4	7.3	9.6	25.5	55.2
2013Q4 ²	100.0	2.7	7.3	9.4	25.8	54.7
2014Q4 ²	100.0	2.5	7.4	9.6	25.1	55.4
2015Q1 ²	100.0	2.5	7.3	9.7	23.8	56.6
2015Q2 ²	100.0	2.4	7.1	9.7	25.3	55.5
2015Q3 ²	100.0	1.9	7.3	10.2	23.8	56.8
2015Q4 ²	100.0	2.5	7.4	9.3	24.6	56.2

**TABLE 3B - HISTORICAL TABLE OF CURRENTLY EMPLOYED PERSONS BY AGE GROUPS
(PERCENTAGE) - FEMALE**

Year	All Ages	Age Groups				
		15 - 19 YRS	20 - 24 YRS	25 - 29 YRS	30 - 39 YRS	40+ YRS
2008 ¹	100.0	3.2	10.2	11.2	24.0	51.5
2009 ¹	100.0	3.3	8.9	11.0	24.6	52.2
2010 ¹	100.0	2.9	9.2	10.0	23.9	54.0
2011 ²	100.0	2.8	8.5	10.3	24.4	54.0
2012 ²	100.0	2.2	8.5	10.5	25.1	53.7
2013 ²	100.0	2.4	8.0	10.0	24.3	55.2
2014 ²	100.0	2.2	7.1	9.9	24.8	56.0
2013Q4 ²	100.0	1.9	7.7	9.8	25.1	55.5
2014Q4 ²	100.0	2.0	7.0	10.7	24.7	55.6
2015Q1 ²	100.0	2.5	7.3	9.8	24.3	56.1
2015Q2 ²	100.0	1.9	7.0	10.0	25.6	55.6
2015Q3 ²	100.0	2.0	8.4	9.6	24.3	55.6
2015Q4 ²	100.0	1.9	8.4	9.1	24.2	56.4

¹ - Excluding Northern province

² - All the districts are included

**TABLE 4 - HISTORICAL TABLE OF CURRENTLY EMPLOYED PERSONS BY LEVEL OF EDUCATION
(PERCENTAGE) - BOTH SEXES**

Year	Total	Level of education			
		Grade 5 & Below	Grades 6 - 10	GCE (O.L.)/ NCGE	GCE (A.L.)/ HNCE & above
2008 ¹	100.0	20.8	47.4	15.8	15.9
2009 ¹	100.0	21.1	47.2	15.5	16.2
2010 ¹	100.0	20.2	48.2	15.9	15.8
2011 ²	100.0	18.8	48.1	15.7	17.4
2012 ²	100.0	18.5	47.2	17.6	16.7
2013 ²	100.0	17.9	47.8	16.0	18.3
2014 ²	100.0	16.1	48.9	16.1	18.8
2013Q4 ²	100.0	17.6	48.1	15.6	18.7
2014Q4 ²	100.0	15.6	49.6	15.7	19.0
2015Q1 ²	100.0	16.3	49.1	17.0	17.5
2015Q2 ²	100.0	16.3	46.2	17.7	19.7
2015Q3 ²	100.0	17.1	46.8	18.1	18.0
2015Q4 ²	100.0	15.9	47.4	17.0	19.8

**TABLE 4A - HISTORICAL TABLE OF CURRENTLY EMPLOYED PERSONS BY LEVEL OF EDUCATION
(PERCENTAGE) - MALE**

Year	Total	Level of education			
		Grade 5 & Below	Grades 6 - 10	GCE (O.L.)/ NCGE	GCE (A.L.)/ HNCE & above
2008 ¹	100.0	20.1	50.6	16.1	13.2
2009 ¹	100.0	20.3	50.7	15.7	13.3
2010 ¹	100.0	19.1	51.6	16.2	13.1
2011 ²	100.0	18.3	51.0	16.1	14.6
2012 ²	100.0	17.9	51.1	17.8	13.2
2013 ²	100.0	17.6	51.4	16.2	14.8
2014 ²	100.0	16.1	52.6	16.3	15.0
2013Q4 ²	100.0	17.6	51.4	16.2	14.8
2014Q4 ²	100.0	15.5	53.8	15.9	14.8
2015Q1 ²	100.0	16.0	53.0	17.7	13.3
2015Q2 ²	100.0	16.1	50.0	18.4	15.5
2015Q3 ²	100.0	17.4	50.2	18.2	14.2
2015Q4 ²	100.0	16.2	51.2	17.0	15.7

**TABLE 4B - HISTORICAL TABLE OF CURRENTLY EMPLOYED PERSONS BY LEVEL OF EDUCATION
(PERCENTAGE) - FEMALE**

Year	Total	Level of education			
		Grade 5 & Below	Grades 6 - 10	GCE (O.L.)/ NCGE	GCE (A.L.)/ HNCE & above
2008 ¹	100.0	22.2	41.3	15.3	21.2
2009 ¹	100.0	22.5	40.6	15.3	21.7
2010 ¹	100.0	22.3	41.3	15.3	21.1
2011 ²	100.0	19.8	42.2	15.0	23.1
2012 ²	100.0	19.8	39.2	17.2	23.8
2013 ²	100.0	18.5	41.0	15.7	24.8
2014 ²	100.0	16.2	41.8	15.8	26.1
2013Q4 ²	100.0	17.4	41.8	14.6	26.1
2014Q4 ²	100.0	15.8	41.6	15.4	27.2
2015Q1 ²	100.0	16.9	42.1	15.7	25.3
2015Q2 ²	100.0	16.6	39.4	16.5	27.5
2015Q3 ²	100.0	16.6	40.2	17.9	25.3
2015Q4 ²	100.0	15.2	40.1	17.0	27.7

¹ - Excluding Northern province

² - All the districts are included

**TABLE 5 - HISTORICAL TABLE OF CURRENTLY EMPLOYED PERSONS BY EMPLOYMENT STATUS
(PERCENTAGE) - BOTH SEXES**

YEAR	TOTAL EMPLOYED	EMPLOYEE			EMPLOYER	OWN ACCOUNT WORKER	UNPAID FAMILY WORKER
		TOTAL	PUBLIC	PRIVATE			
2008 ¹	100.0	56.5	15.3	41.3	2.9	30.3	10.3
2009 ¹	100.0	57.7	15.5	42.2	2.6	29.2	10.4
2010 ¹	100.0	55.5	14.3	41.3	2.6	31.5	10.3
2011 ²	100.0	55.0	14.4	40.5	2.9	31.5	10.7
2012 ²	100.0	56.5	15.2	41.3	2.8	31.9	8.8
2013 ²	100.0	55.7	15.1	40.6	3.0	32.2	9.1
2014 ²	100.0	56.4	15.3	41.1	2.8	31.9	8.9
2013Q4 ²	100.0	56.5	15.3	41.1	2.8	32.9	7.8
2014Q4 ²	100.0	57.3	15.3	41.9	2.3	31.8	8.6
2015Q1 ²	100.0	55.2	14.7	40.5	2.7	33.0	9.1
2015Q2 ²	100.0	57.5	15.7	41.7	3.1	32.1	7.4
2015Q3 ²	100.0	54.9	14.4	40.5	3.5	32.4	9.3
2015Q4 ²	100.0	57.2	15.1	42.0	3.3	31.5	8.0

**TABLE 5A - HISTORICAL TABLE OF CURRENTLY EMPLOYED PERSONS BY EMPLOYMENT STATUS
(PERCENTAGE) - MALE**

YEAR	TOTAL EMPLOYED	EMPLOYEE			EMPLOYER	OWN ACCOUNT WORKER	UNPAID FAMILY WORKER
		TOTAL	PUBLIC	PRIVATE			
2008 ¹	100.0	57.6	13.7	43.9	4.1	34.2	4.1
2009 ¹	100.0	59.2	13.7	45.5	3.6	33.0	4.3
2010 ¹	100.0	56.2	12.8	43.4	3.5	36.0	4.3
2011 ²	100.0	55.8	12.7	43.1	3.8	36.0	4.3
2012 ²	100.0	56.6	12.8	43.8	3.8	35.9	3.6
2013 ²	100.0	56.6	12.8	43.9	4.2	36.2	3.0
2014 ²	100.0	57.3	13.0	44.3	3.7	36.1	2.9
2013Q4 ²	100.0	57.1	13.4	43.7	3.8	37.0	2.1
2014Q4 ²	100.0	57.8	12.9	45.0	3.2	36.4	2.5
2015Q1 ²	100.0	56.3	12.7	43.6	3.8	36.9	3.0
2015Q2 ²	100.0	57.6	13.0	44.7	4.0	35.9	2.4
2015Q3 ²	100.0	56.0	12.9	43.2	4.6	36.4	3.1
2015Q4 ²	100.0	57.0	12.5	44.5	4.4	35.7	2.8

**TABLE 5B - HISTORICAL TABLE OF CURRENTLY EMPLOYED PERSONS BY EMPLOYMENT STATUS
(PERCENTAGE) - FEMALE**

YEAR	TOTAL EMPLOYED	EMPLOYEE			EMPLOYER	OWN ACCOUNT WORKER	UNPAID FAMILY WORKER
		TOTAL	PUBLIC	PRIVATE			
2008 ¹	100.0	54.4	18.2	36.2	0.7	22.8	22.1
2009 ¹	100.0	55.0	19.0	36.0	0.9	22.1	22.0
2010 ¹	100.0	54.3	17.3	37.0	0.8	22.6	22.3
2011 ²	100.0	53.2	17.8	35.4	0.9	22.7	23.2
2012 ²	100.0	56.1	19.9	36.2	0.9	23.6	19.4
2013 ²	100.0	54.0	19.4	34.6	0.9	24.6	20.5
2014 ²	100.0	54.7	19.9	34.9	1.0	23.7	20.6
2013Q4 ²	100.0	55.4	19.1	36.2	0.9	25.0	18.7
2014Q4 ²	100.0	56.2	20.1	36.1	0.4	23.0	20.4
2015Q1 ²	100.0	53.1	18.4	34.7	0.8	26.1	20.0
2015Q2 ²	100.0	57.1	20.8	36.4	1.3	25.0	16.5
2015Q3 ²	100.0	52.7	17.4	35.3	1.4	24.8	21.1
2015Q4 ²	100.0	57.5	20.2	37.3	1.1	23.5	17.9

¹ - Excluding Northern province

² - All the districts are included

These figures are to be treated with caution as the corresponding CV (Coefficient of variation) values are high.

Table 6 - Currently Employed person by Industry group (Based on ISIC Fourth Revision) - both sexes

Year	Total	Industry Group																
		1	2	3	6	7	8	9	10	11	13	14	15	16	17	19	20	Other
2013	8,417,674	2,504,310	100,153	1,514,039	587,968	1,150,911	517,511	188,219	62,640	153,027	67,964	107,027	629,288	329,572	141,020	131,982	182,277	49,766
2014	8,423,994	2,399,629	79,193	1,535,243	615,374	1,110,605	527,781	199,602	71,357	160,728	52,556	112,335	654,938	341,183	138,033	143,889	219,463	62,083
2013Q4 ²	8,319,680	2,546,819	85,254	1,451,858	558,101	1,088,977	534,329	195,489	44,829	123,793	48,217	110,098	670,239	343,814	147,440	131,996	185,713	52,715
2014Q4 ²	8,395,762	2,552,541	63,375	1,429,636	644,413	1,082,248	507,602	192,308	70,667	159,215	53,955	126,958	617,131	361,229	143,487	127,970	204,680	58,347
2015Q1 ²	8,502,270	2,500,322	79,101	1,554,639	566,742	1,126,627	526,142	210,411	59,932	154,288	64,446	128,356	677,940	292,207	134,227	148,666	207,692	70,533
2015Q2 ²	8,600,629	2,443,301	39,690	1,551,418	615,103	1,097,800	521,785	202,063	66,271	174,775	70,211	138,265	690,919	393,220	144,970	167,036	203,455	80,348
2015Q3 ²	8,554,179	2,339,633	79,554	1,635,878	609,884	1,206,774	522,382	233,293	48,313	152,905	71,119	135,242	626,612	355,227	137,436	172,574	174,308	53,045
2015Q4 ²	8,558,431	2,352,971	58,207	1,505,831	602,876	1,204,910	550,042	243,467	59,551	160,115	84,658	132,241	638,676	365,508	181,053	138,716	213,160	66,450

Note: These Industry groups are based on ISIC - Rev. 4

1 Agriculture, forestry and fishing (A)

2 Mining & quarrying (B)

3 Manufacturing (C)

6 Construction, Electricity, gas, steam and air conditioning supply, Water supply, sewerage, waste management and remediation activities (D, E,F)

7 Wholesale and retail trade, repair of motor vehicles and motor cycles(G)

8 Transportation and storage (H)

9 Accommodation and food services activities (I)

10 Information and communication (J)

11 Financial and insurance activities (K)

13 Professional, scientific and technical activities (M)

14 Administrative and support service activities (N)

15 Public administration and defence compulsory social security (O)

16 Education (P)

17 Human health and social work activities (Q)

19 Other service activities (S)

20 Activities of households as employers; undifferentiated goods and services - producing activities of households for own use (T)

Other

Other

12 Real estate activities (L)

18 Arts, entertainment and recreation (R)

21 Activities of extra territorial organizations & bodies (U)

Table 6A - Currently Employed person by Industry group (Based on ISIC Fourth Revision) - Male

Year	Total	Industry Group																
		1	2	3	6	7	8	9	10	11	13	14	15	16	17	19	20	Other
2013	5,498,815	1,532,888	88,137	800,081	570,928	818,537	494,339	135,302	47,762	89,213	41,868	78,616	407,594	98,169	54,441	92,539	108,256	40,144
2014	5,548,131	1,482,816	73,998	812,534	589,244	792,808	512,240	137,400	54,237	91,064	34,806	89,998	422,979	104,820	60,202	111,841	129,848	47,295
2013Q4 ²	5,451,097	1,562,658	71,056	738,504	540,923	771,563	523,085	145,083	35,445	75,366	27,873	85,112	458,554	100,928	54,615	94,114	126,238	39,980
2014Q4 ²	5,534,061	1,582,296	60,761	761,243	625,767	766,811	489,874	133,826	48,503	85,417	32,553	101,617	401,658	106,273	59,465	105,392	133,730	38,873
2015Q1 ²	5,488,213	1,506,247	74,324	805,598	535,744	798,982	508,553	139,409	46,611	74,204	44,398	97,057	438,803	80,942	44,339	112,023	127,360	53,619
2015Q2 ²	5,552,614	1,466,298	36,805	821,316	589,311	785,229	502,178	143,852	55,560	98,147	45,088	110,491	446,884	110,485	50,383	121,926	107,179	61,483
2015Q3 ²	5,605,800	1,427,809	74,428	867,904	591,232	855,608	512,482	168,599	36,482	87,867	47,550	101,815	415,843	105,850	47,234	112,645	113,798	38,653
2015Q4 ²	5,619,829	1,444,082	55,502	800,075	579,311	865,006	533,059	161,598	45,782	93,354	54,492	98,552	426,874	103,346	57,079	110,036	138,165	53,516

Note: These Industry groups are based on ISIC - Rev. 4

¶ These figures are to be treated with caution as the corresponding CV (Coefficient of variation) values are high.

1 Agriculture, forestry and fishing (A)

2 Mining & quarrying (B)

3 Manufacturing (C)

6 Construction, Electricity, gas, steam and air conditioning supply, Water supply, sewerage, waste management and remediation activities (D, E,F)

7 Wholesale and retail trade, repair of motor vehicles and motor cycles(G)

8 Transportation and storage (H)

9 Accommodation and food services activities (I)

10 Information and communication (J)

11 Financial and insurance activities (K)

13 Professional, scientific and technical activities (M)

14 Administrative and support service activities (N)

15 Public administration and defence compulsory social security (O)

16 Education (P)

17 Human health and social work activities (Q)

19 Other service activities (S)

20 Activities of households as employers; undifferentiated goods and services - producing activities of households for own use (T)

Other

12 Other
Real estate activities (L)
18 Arts, entertainment and recreation (R)
21 Activities of extra territorial organizations & bodies (U)

Table 6B - Currently Employed person by Industry group (Based on ISIC Fourth Revision) - Female

Year	Total	Industry Group																
		1	2	3	6	7	8	9	10	11	13	14	15	16	17	19	20	Other
2013	2,918,859	971,422	12,016	713,957	17,040	332,374	23,173	52,917	14,878	63,814	26,096	28,411	221,695	231,402	86,578	39,443	74,021	9,622
2014	2,875,862	916,814	5,195	722,709	26,130	317,797	15,541	62,201	17,120	69,664	17,750	22,337	231,959	236,363	77,830	32,048	89,615	14,789
2013Q4 ²	2,868,583	984,161	14,198	713,354	17,178	317,415	11,244	50,405	9,384	48,427	20,344	24,986	211,684	242,886	92,825	37,882	59,475	12,735
2014Q4 ²	2,861,702	970,245	2,614	668,393	18,646	315,437	17,728	58,482	22,164	73,798	21,401	25,341	215,474	254,956	84,022	22,577	70,950	19,474
2015Q1 ²	3,014,057	994,075	4,777	749,041	30,997	327,645	17,589	71,002	13,321	80,084	20,049	31,299	239,137	211,265	89,888	36,643	80,332	16,914
2015Q2 ²	3,048,015	977,003	2,885	730,102	25,793	312,571	19,607	58,211	10,711	76,627	25,123	27,774	244,035	282,735	94,587	45,110	96,276	18,864
2015Q3 ²	2,948,378	911,824	5,126	767,974	18,652	351,165	9,899	64,694	11,830	65,038	23,569	33,427	210,769	249,377	90,202	59,928	60,511	14,392
2015Q4 ²	2,938,601	908,889	2,705	705,756	23,565	339,904	16,983	81,869	13,769	66,761	30,165	33,690	211,802	262,161	123,974	28,679	74,995	12,934

¶ These figures are to be treated with caution as the corresponding CV (Coefficient of variation) values are high.

1 Agriculture, forestry and fishing (A)

2 Mining & quarrying (B)

3 Manufacturing (C)

6 Construction, Electricity, gas, steam and air conditioning supply, Water supply, sewerage, waste management and remediation activities (D, E,F)

7 Wholesale and retail trade, repair of motor vehicles and motor cycles(G)

8 Transportation and storage (H)

9 Accommodation and food services activities (I)

10 Information and communication (J)

11 Financial and insurance activities (K)

13 Professional, scientific and technical activities (M)

14 Administrative and support service activities (N)

15 Public administration and defence compulsory social security (O)

16 Education (P)

17 Human health and social work activities (Q)

19 Other service activities (S)

20 Activities of households as employers; undifferentiated goods and services - producing activities of households for own use (T)

Other

12 Other
Real estate activities (L)
18 Arts, entertainment and recreation (R)
21 Activities of extra territorial organizations & bodies (U)

Table 6C: Historical table of currently employed population by major industry group - Both sexes

Major Industry Group	Year							
	2013	2014	2013Q4	2014Q4	2015Q1	2015Q2	2015Q3	2015Q4
Total	8,417,674	8,423,994	8,319,680	8,395,762	8,502,270	8,600,629	8,554,179	8,558,431
Agriculture	2,504,310	2,399,629	2,546,819	2,552,541	2,500,322	2,443,301	2,339,633	2,352,971
Industry	2,202,159	2,229,810	2,095,213	2,137,424	2,200,481	2,206,211	2,325,316	2,166,914
Services	3,711,204	3,794,554	3,677,649	3,705,797	3,801,467	3,951,118	3,889,230	4,038,546

Table 6D: Historical table of currently employed population by major industry group (percentage) - Both sexes

Major Industry Group	Year							
	2013	2014	2013Q4	2014Q4	2015Q1	2015Q2	2015Q3	2015Q4
Total	100.0	100.0	100.0	100.0	100.0	100.0	100.0	100.0
Agriculture	29.8	28.5	30.6	30.4	29.4	28.4	27.4	27.5
Industry	26.2	26.5	25.2	25.5	25.9	25.7	27.2	25.3
Services	44.1	45.0	44.2	44.1	44.7	45.9	45.5	47.2

Note: These Industry groups are based on ISIC - Rev. 4

Agriculture

1. Agriculture Forestry and Fishery (A)

Industries

1. Mining & Quarrying (B)
2. Manufacturing (C)
3. Construction, Electricity, gas, steam and air conditioning supply, Water supply, sewerage, waste management and remediation activities (D, E,F)

Services

1. Wholesale and retail trade, repair of motor vehicles and motor cycles(G)
2. Transportation and storage (H)
3. Accommodation and food services activities (I)
4. Information and communication (J)
5. Financial and insurance activities (K)
6. Professional, scientific and technical activities (M)
7. Administrative and support service activities (N)
8. Public administration and defence compulsory social security (O)
9. Education (P)
10. Human health and social work activities (Q)
11. Other service activities (S)
12. Activities of households as employers; undifferentiated goods and services - producing activities of households for own use (T)
13. Real estate activities (L) Arts, entertainment and recreation (R) Activities of extra territorial organizations & bodies (U)

Table 7 - Currently Employed person by Occupation group (Based on ISCO 08) - Both sexes

Year	Occupation group										
	Total	1	2	3	4	5	6	7	8	9	10
2013	8,417,674	393,388	532,446	499,721	311,354	935,546	1,624,971	1,439,192	708,049	1,918,771	54,235
2014	8,423,994	382,344	538,498	500,762	360,460	992,776	1,702,854	1,447,743	700,852	1,764,540	33,164
2013Q4	8,319,680	377,366	552,416	463,065	341,943	916,510	1,589,784	1,369,946	680,608	1,966,023	62,019
2014Q4	8,395,762	379,795	539,656	489,489	364,579	939,767	1,800,334	1,438,450	712,793	1,697,134	33,767
2015Q1	8,502,270	480,086	501,483	499,265	338,643	884,451	1,686,109	1,427,773	795,743	1,860,148	28,570
2015Q2	8,600,629	563,491	617,930	544,724	353,571	880,931	1,562,692	1,393,554	708,286	1,931,450	44,000
2015Q3	8,554,179	507,196	518,229	500,416	338,098	1,012,625	1,539,978	1,431,903	749,512	1,909,427	46,795
2015Q4	8,558,431	547,908	607,786	528,017	347,283	952,570	1,536,332	1,329,511	724,039	1,924,080	60,904

These figures are to be treated with caution as the corresponding CV (Coefficient of variation) values are high.

- | | | | |
|---|--|----|---|
| 1 | Managers, Senior Officials and Legislators | 6 | Skilled Agricultura, Forestry and Fishery workers |
| 2 | Professionals | 7 | Craft and Related Trades workers |
| 3 | Technicians and Associate Professionals | 8 | Plant and Machine operators and Assemblers |
| 4 | Clerks and Clerical support workers | 9 | Elementary occupations |
| 5 | Services and Sales workers | 10 | Armed Forces Occupations & unidentified occupations |

Table 7A - Currently Employed person by Occupation group (Based on ISCO 08) - Male

Year	Total	Occupation group									
		1	2	3	4	5	6	7	8	9	10
2013	5,498,815	279,252	203,625	320,862	153,574	647,849	1,064,063	975,201	614,994	1,191,062	48,333
2014	5,548,131	287,467	192,060	334,822	172,674	692,360	1,103,978	971,754	615,479	1,145,164	32,372
2013Q4	5,451,097	274,564	219,229	302,044	167,280	632,750	1,060,751	891,425	596,679	1,245,865	60,510
2014Q4	5,534,061	287,961	177,200	329,977	177,326	650,706	1,169,644	966,616	628,141	1,112,722	33,767
2015Q1	5,488,213	334,507	173,282	349,375	151,572	616,618	1,076,218	907,389	678,073	1,175,246	25,933
2015Q2	5,552,614	422,142	200,055	367,268	175,461	614,480	1,011,855	937,807	595,353	1,187,043	41,151
2015Q3	5,605,800	383,437	177,213	342,631	172,469	675,375	1,037,426	940,099	646,601	1,192,069	38,479
2015Q4	5,619,829	413,195	217,254	344,911	166,321	648,709	1,039,038	879,914	630,430	1,227,924	52,134

Table 7B - Currently Employed person by Occupation group (Based on ISCO 08) - Female

Year	Total	Occupation group									
		1	2	3	4	5	6	7	8	9	10
2013	2,918,859	114,136	328,821	178,859	157,780	287,698	560,908	463,990	93,055	727,709	5,902
2014	2,875,862	94,877	346,438	165,940	187,786	300,416	598,876	475,988	85,373	619,376	792
2013Q4	2,868,583	102,802	333,187	161,021	174,662	283,761	529,033	478,521	83,929	720,159	1,509
2014Q4	2,861,702	91,834	362,455	159,512	187,253	289,060	630,689	471,833	84,652	584,412	..
2015Q1	3,014,057	145,579	328,201	149,890	187,070	267,833	609,892	520,384	117,670	684,902	2,637
2015Q2	3,048,015	141,349	417,875	177,456	178,110	266,451	550,837	455,748	112,933	744,407	2,849
2015Q3	2,948,378	123,759	341,015	157,785	165,628	337,249	502,552	491,804	102,911	717,358	8,316
2015Q4	2,938,601	134,713	390,532	183,106	180,963	303,860	497,294	449,597	93,610	696,156	8,770

These figures are to be treated with caution as the corresponding CV (Coefficient of variation) values are high.

- | | | | |
|---|--|----|---|
| 1 | Managers, Senior Officials and Legislators | 6 | Skilled Agricultura, Forestry and Fishery workers |
| 2 | Professionals | 7 | Craft and Related Trades workers |
| 3 | Technicians and Associate Professionals | 8 | Plant and Machine operators and Assemblers |
| 4 | Clerks and Clerical support workers | 9 | Elementary occupations |
| 5 | Services and Sales workers | 10 | Armed Forces Occupations & unidentified occupations |

TABLE 8 - CURRENTLY EMPLOYED PERSONS BY HOURS PER WEEK ACTUALLY WORKED AT THE MAIN JOB AND MAJOR INDUSTRIAL GROUP (PERCENTAGE) - BOTH SEXES

MAJOR INDUSTRIAL GROUP	TOTAL	0 *	1 - 9	10 - 19	20 - 29	30 - 39	40 - 49	50 & OVER
Total	100.0	4.6	1.8	4.4	7.4	13.8	38.8	29.2
1	100.0	5.4	3.7	9.4	13.7	20.8	34.4	12.5
2	100.0	5.3	1.8	5.9	2.1	10.4	36.2	38.3
3	100.0	3.4	1.1	3.5	7.3	11.1	42.6	31.2
6	100.0	7.7	1.1	2.2	5.6	14.2	43.7	25.4
7	100.0	2.3	1.2	2.2	4.1	8.3	31.8	50.2
8	100.0	2.8	0.4	1.8	2.7	7.8	32.0	52.4
9	100.0	2.1	0.4	1.1	4.8	6.2	35.0	50.4
10	100.0	..	2.3	..	1.3	1.7	54.2	40.5
11	100.0	2.5	..	2.6	3.0	5.0	61.7	25.3
13	100.0	4.4	1.6	2.1	2.1	9.5	55.5	24.9
14	100.0	3.8	0.2	0.6	1.6	9.6	39.2	44.9
15	100.0	4.1	0.2	0.8	1.8	6.6	63.0	23.5
16	100.0	17.7	3.9	6.2	7.5	39.8	20.8	4.1
17	100.0	1.9	2.3	..	2.3	7.6	48.4	37.5
19	100.0	1.9	0.6	1.9	3.2	15.0	33.7	43.7
20	100.0	3.2	1.1	4.0	14.2	8.5	32.4	36.6
Other	100.0	1.2	1.7	7.1	4.8	11.2	39.1	34.9

* Has a job but not at work during the reference week

.. Negligible

These figures are to be treated with caution as the corresponding CV (Coefficient of variation) values are high.

Industry group

- 1 Agriculture, forestry and fishing (A)
- 2 Mining & quarrying (B)
- 3 Manufacturing (C)
- 6 Construction, Electricity, gas, steam and air conditioning supply, Water supply, sewerage, waste management and remediation activities (D, E,F)
- 7 Wholesale and retail trade, repair of motor vehicles and motor cycles(G)
- 8 Transportation and storage (H)
- 9 Accommodation and food services activities (I)
- 10 Information and communication (J)
- 11 Financial and insurance activities (K)
- 13 Professional, scientific and technical activities (M)
- 14 Administrative and support service activities (N)
- 15 Public administration and defence compulsory social security (O)
- 16 Education (P)
- 17 Human health and social work activities (Q)
- 19 Other service activities (S)
- 20 Activities of households as employers; undifferentiated goods and services - producing activities of households for own use (T)
- Other

Other

- 12 Real estate activities (L)
- 18 Arts, entertainment and recreation (R)
- 21 Activities of extra territorial organizations & bodies (U)

**TABLE 9 - HISTORICAL TABLE OF CURRENTLY UNEMPLOYED PERSONS BY AGE GROUPS
(PERCENTAGE) - BOTH SEXES**

YEAR	TOTAL	AGE GROUPS				
		15 - 19 YRS	20 - 24 YRS	25 - 29 YRS	30 - 39 YRS	40 + YRS
2008 ¹	100.0	15.8	38.4	21.5	13.6	10.6
2009 ¹	100.0	14.5	37.5	21.3	15.1	11.6
2010 ¹	100.0	14.8	38.7	21.2	14.7	10.6
2011 ²	100.0	12.8	42.5	20.6	15.6	8.5
2012 ²	100.0	14.2	40.6	18.8	15.6	10.7
2013 ²	100.0	13.7	40.9	18.1	15.2	12.1
2014 ²	100.0	14.3	39.9	19.3	15.2	11.3
2013Q4 ²	100.0	11.5	43.2	20.6	13.8	11.0
2014Q4 ²	100.0	14.7	42.5	16.0	16.0	10.8
2015Q1 ²	100.0	17.2	37.6	18.7	15.0	11.5
2015Q2 ²	100.0	12.9	40.1	20.9	15.1	11.0
2015Q3 ²	100.0	13.6	40.1	18.3	14.9	13.1
2015Q4 ²	100.0	13.3	31.1	24.8	18.7	12.1

**TABLE 9A - HISTORICAL TABLE OF CURRENTLY UNEMPLOYED PERSONS BY AGE GROUPS
(PERCENTAGE) - MALE**

YEAR	TOTAL	AGE GROUPS				
		15 - 19 YRS	20 - 24 YRS	25 - 29 YRS	30 - 39 YRS	40+ YRS
2008 ¹	100.0	19.4	37.8	19.5	9.4	13.9
2009 ¹	100.0	17.9	36.4	18.9	12.4	14.4
2010 ¹	100.0	19.6	41.2	15.5	11.7	12.0
2011 ²	100.0	17.6	44.9	16.7	13.1	7.6
2012 ²	100.0	19.5	41.6	17.1	12.4	9.4
2013 ²	100.0	16.9	44.0	15.4	11.6	12.1
2014 ²	100.0	20.1	37.5	18.2	11.7	12.4
2013Q4 ²	100.0	17.8	49.6	14.5	7.3	10.8
2014Q4 ²	100.0	20.9	40.3	15.2	9.7	13.9
2015Q1 ²	100.0	27.4	32.9	14.2	13.8	11.7
2015Q2 ²	100.0	17.0	44.9	14.6	15.4	8.1
2015Q3 ²	100.0	21.7	42.1	12.9	10.7	12.5
2015Q4 ²	100.0	20.3	38.4	17.8	10.5	13.0

**TABLE 9B - HISTORICAL TABLE OF CURRENTLY UNEMPLOYED PERSONS BY AGE GROUPS
(PERCENTAGE) - FEMALE**

YEAR	TOTAL	AGE GROUPS				
		15 - 19 YRS	20 - 24 YRS	25 - 29 YRS	30 - 39 YRS	40+ YRS
2008 ¹	100.0	12.9	38.9	23.2	17.0	8.0
2009 ¹	100.0	11.5	38.5	23.5	17.5	9.0
2010 ¹	100.0	10.7	36.5	26.1	17.4	9.3
2011 ²	100.0	9.3	40.7	23.4	17.5	9.1
2012 ²	100.0	9.4	39.8	20.3	18.6	11.9
2013 ²	100.0	10.9	38.3	20.3	18.3	12.2
2014 ²	100.0	9.0	42.0	20.2	18.4	10.4
2013Q4 ²	100.0	6.5	38.1	25.4	18.9	11.2
2014Q4 ²	100.0	10.2	44.2	16.6	20.7	8.4
2015Q1 ²	100.0	10.9	40.5	21.5	15.8	11.3
2015Q2 ²	100.0	9.8	36.5	25.6	14.9	13.2
2015Q3 ²	100.0	6.9	38.5	22.7	18.4	13.6
2015Q4 ²	100.0	9.0	26.6	29.1	23.7	11.6

These figures are to be treated with caution as the corresponding CV (Coefficient of variation) values are high.

¹ - Excluding Northern province

² - All the districts are included

TABLE 10 - HISTORICAL TABLE OF CURRENTLY UNEMPLOYED PERSONS BY LEVEL OF EDUCATION (PERCENTAGE) - BOTH SEXES

YEAR	TOTAL	LEVEL OF EDUCATION			
		GRADE 5 & BELOW	GRADES 6 - 10	GCE(O/L) NCGE	GCE(A/L) HNCE & ABOVE
2008 ¹	100.0	4.5	39.3	23.4	32.8
2009 ¹	100.0	4.3	39.9	23.1	32.7
2010 ¹	100.0	2.7	34.9	22.7	39.7
2011 ²	100.0	2.7	37.9	19.9	39.4
2012 ²	100.0	2.6	37.4	27.3	32.8
2013 ²	100.0	3.9	36.5	22.1	37.4
2014 ²	100.0	3.2	37.9	22.4	36.5
2013Q4 ²	100.0	4.8	33.8	22.3	39.1
2014Q4 ²	100.0	4.6	33.1	22.4	39.9
2015Q1 ²	100.0	2.9	33.3	24.2	39.7
2015Q2 ²	100.0	1.9	34.7	25.0	38.3
2015Q3 ²	100.0	3.1	34.1	24.6	38.3
2015Q4 ²	100.0	1.8	36.2	23.7	38.3

TABLE 10A - HISTORICAL TABLE OF CURRENTLY UNEMPLOYED PERSONS BY LEVEL OF EDUCATION (PERCENTAGE) - MALE

YEAR	TOTAL	LEVEL OF EDUCATION			
		GRADE 5 & BELOW	GRADES 6 - 10	GCE(O/L) NCGE	GCE(A/L) HNCE & ABOVE
2008 ¹	100.0	5.3	49.7	23.1	21.9
2009 ¹	100.0	4.4	48.0	25.3	22.3
2010 ¹	100.0	3.4	40.4	25.4	30.9
2011 ²	100.0	2.0	47.6	20.4	29.9
2012 ²	100.0	2.0	46.8	29.7	21.5
2013 ²	100.0	4.6	43.6	24.3	27.5
2014 ²	100.0	3.1	48.3	22.9	25.7
2013Q4 ²	100.0	4.4	44.3	23.5	27.8
2014Q4 ²	100.0	6.1	42.9	21.5	29.5
2015Q1 ²	100.0	1.9	44.7	28.4	25.1
2015Q2 ²	100.0	1.9	46.2	33.0	18.8
2015Q3 ²	100.0	1.8	41.8	31.6	24.8
2015Q4 ²	100.0	1.2	45.5	29.6	23.7

.. Negligible

TABLE 10B - HISTORICAL TABLE OF CURRENTLY UNEMPLOYED PERSONS BY LEVEL OF EDUCATION (PERCENTAGE) - FEMALE

YEAR	TOTAL	LEVEL OF EDUCATION			
		GRADE 5 & BELOW	GRADES 6 - 10	GCE(O/L) NCGE	GCE(A/L) HNCE & ABOVE
2008 ¹	100.0	3.8	30.9	23.7	41.7
2009 ¹	100.0	4.3	32.5	21.1	42.1
2010 ¹	100.0	2.1	30.1	20.5	47.3
2011 ²	100.0	3.3	30.7	19.5	46.5
2012 ²	100.0	3.0	28.8	25.1	43.1
2013 ²	100.0	3.2	30.4	20.3	46.1
2014 ²	100.0	3.2	28.5	22.1	46.2
2013Q4 ²	100.0	5.2	25.5	21.4	47.9
2014Q4 ²	100.0	3.5	25.8	23.1	47.6
2015Q1 ²	100.0	3.6	26.1	21.5	48.8
2015Q2 ²	100.0	2.0	26.2	19.1	52.8
2015Q3 ²	100.0	4.1	27.8	18.7	49.3
2015Q4 ²	100.0	2.2	30.5	20.1	47.3

These figures are to be treated with caution as the corresponding CV (Coefficient of variation) values are high.

¹ - Excluding Northern province

² - All the districts are included

TABLE 11 - CURRENTLY UNEMPLOYED PERSONS BY SEX AND DURATION OF UNEMPLOYMENT

(2015 4th Quarter)

Sex	Total	Duration		
		Less than 6 months	6 to less than 12 months	12+ months
Both sexes	389,062	137,650	99,713	151,700
%	100.0	35.4	25.6	39.0
Male	147,463	64,391	42,457	40,615
%	100.0	43.7	28.8	27.5
Female	241,599	73,259	57,255	111,085
%	100.0	30.3	23.7	46.0

STANDARD ERROR AND COEFFICIENT OF VARIATION OF SELECTED VARIABLES

 (2015 4th Quarter)

	Estimated Value	Standard Error	Coefficient of Variation (%)	Estimated Value (Ratio)	Standard Error	Coefficient of Variation (%)
General labour force characteristics						
Population (15 years & over)	16,694,379	156,446	0.9			
Employed Population	8,558,431	112,083	1.3			
Unemployed Population	389,062	24,105	6.2			
Employment Rate				95.7	0.266	0.278
Unemployment Rate				4.3	0.266	6.106
Labour Force	8,947,493	113,697	1.3			
Not in Labour Force	7,746,886	111,242	1.4			
Employed persons by major industry Groups						
1	2,352,971	96,693	4.1			
2	58,207	10,181	17.5			
3	1,505,831	52,008	3.5			
6	602,876	31,321	5.2			
7	1,204,910	48,270	4.0			
8	550,042	30,003	5.5			
9	243,467	21,902	9.0			
10	59,551	10,395	17.5			
11	160,115	15,908	9.9			
13	84,658	11,438	13.5			
14	132,241	16,100	12.2			
15	638,676	33,948	5.3			
16	365,508	26,495	7.2			
17	181,053	19,098	10.5			
19	138,716	13,803	10.0			
20	213,160	20,592	9.7			
Other	66,450	9,738	14.7			
Unemployed persons by level of education						
Below grade 5	7,234,383	134,977	1.9			
Grade 5 - 9/Year 6 - 10	9,035,546	149,257	1.7			
G.C.E.(O/L)/N.C.G.E.	3,283,407	90,407	2.8			
G.C.E.(A/L)/H.N.C.E. & above	2,787,605	98,610	3.5			
Industry group						
1 Agriculture, forestry and fishing (A)						
2 Mining & quarrying (B)						
3 Manufacturing (C)						
6 Construction, Electricity, gas, steam and air conditioning supply, Water supply, sewerage, waste management and remediation activities (D, E,F)						
7 Wholesale and retail trade, repair of motor vehicles and motor cycles(G)						
8 Transportation and storage (H)						
9 Accommodation and food services activities (I)						
10 Information and communication (J)						
11 Financial and insurance activities (K)						
13 Professional, scientific and technical activities (M)						
14 Administrative and support service activities (N)						
15 Public administration and defence compulsory social security (O)						
16 Education (P)						
17 Human health and social work activities (Q)						
19 Other service activities (S)						
20 Activities of households as employers; undifferentiated goods and services - producing activities of households for own use (T)						
Other						
	Other					
	Real estate activities (L)					
	Arts, entertainment and recreation (R)					
	Activities of extra territorial organizations & bodies (U)					

Special Statistical Appendix

EXPLANATORY NOTES

Coverage

Sri Lanka Labour Force Survey was designed to measure the levels and trends of employment, unemployment and labour force in Sri Lanka. This survey is being conducted quarterly, since the first quarter of 1990.

This quarterly survey of households is conducted through a scientifically selected sample designed to represent the civilian non-institutional population. Respondents are interviewed to obtain information about the employment status etc. of each member of the household 15 years of age and older.

The field work of the survey is done during the third week of each month, Monday through Sunday. This is known as the "survey week". The inquiry relates to activity or status are referred in the preceding week of the survey week; referred to as the "reference week".

The concepts and definitions underlying labour force data are as follows.

Concepts & Definitions

1. **Labour force:** The labour force is composed of the economically active population 15 years of age and over.
2. **The Economically Active Population:** is defined as those persons who are/were employed or unemployed during the reference period of the survey.
3. **Employed:** Persons, who during the reference period, worked as paid employees, employers, own account workers (self employed), or unpaid family workers are said to be employed. This includes persons with a job but not at work during the reference period.
4. **Unemployed:** Persons who are seeking and available for work, but had no employment during the reference period.
5. **Currently Economically Active:** A person who was employed or unemployed during the current reference period is considered to be currently economically active.
6. **Not in the Labour Force (not economically active):** Persons who were neither working nor available/looking for work are classified as "not in the labour force". Persons are not in the labour force for such reasons as: full time care of the household, full – time students, retired or old age, infirmed or disabled, or are not interested in working for one reason or another. Current and Usual definitions apply.
7. **Criteria for classification of underemployment:** In order to classify an employed persons as visibly underemployed,

(i) If the person has worked less than the normal duration in his/her main activity

In Sri Lanka scenario, 35 hours per week is taken as the cut-off point applicable to all workers, except government teachers. As in practice, though teachers do have a normal duration of work which is below the general cut-off point, they should be on a full time schedule according to the nature of their job. Further, those who do have a secondary job or those who are employers, were considered as having worked the normal duration in their respective activity.

Therefore, if the person has worked less than the normal duration in his/her activity (as described above), then the person is further questioned to ascertain whether he/She is prepared and available for further work if provided. Such persons are considered underemployed in their respective employment.

(ii) If the person has worked more than the normal duration in his/her activity

If the person has worked even more than 35 hours as usually, but he has worked less than 35 hours actually in the reference period, only due to the off season or bad weather, such persons were also further questioned to check their underemployment situation, considering them as a special category.

8. Informal Sector Employment

In order to classify a person to be employed in informal sector employment, following information were used.

- (i) Registration of the organization
- (ii) Accounts keeping practices of the organization
- (iii) Total number of regular employees of the organization.

Reliability of the estimates

Statistics based on the quarterly labour force data are subject to both sampling and non - sampling errors. When a sample rather than the entire population is surveyed, there is a chance that the sample estimates may differ from the "true" population values they represent.

The exact differences or sampling error, varies depending on the particular sample selected, and this variability is measured by the standard error of the estimate. There is about a 95 percent chance, or level of confidence, that an estimate based on a sample will differ by no more than 1.96 standard errors from the " true" population value, because of sampling error. Analyses relating to the Labour Force Survey are generally conducted at the 95 percent level of confidence.

For example, the confidence interval for the quarterly unemployment rate is on the order of

Estimated value *(of the unemployment rate)* \pm (standard error) * (1.96)

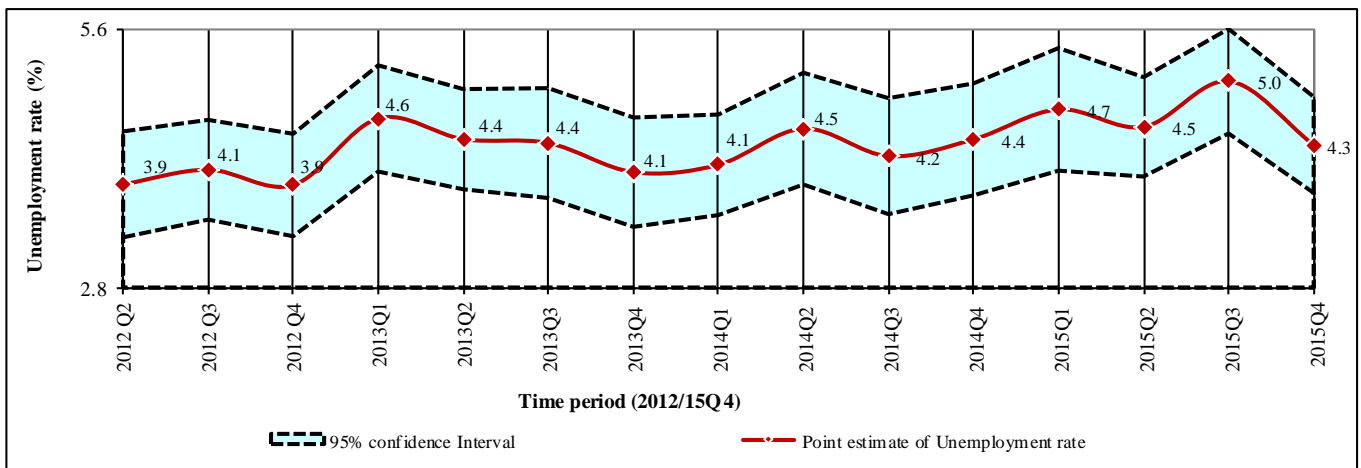
4.5 \pm (0.275) * (1.96)

(4.5 \pm 0.539)

This means, the 95 percent confidence interval on the quarterly unemployment rate could range from (5.6 to 7.2) . This implies that there is about 95 percent chance that the "true" unemployment rate lies within this interval. This range includes all the values range from 5.6 to 7.2. When the comparison of this estimate is done between two quarters, if any of the value within the 95 percent confidence interval of one quarter overlaps with the confidence interval of the other , it means that the estimates of this two quarters *are not significantly different*.

Therefore, in each quarterly labour force report, a separate table is given including approximate standard errors for some selected variables, so that users could understand this statistical scenario clearly.

Distribution of unemployment rates and 95% confidence intervals (2012Q2 - 2015Q4)



Note:

- * Survey was not conducted in the fourth quarter 2011 & first quarter 2012 due to activities of population census.

As seen in figure 2, it is very important to note that, there were no statistically significant differences between the unemployment rates reported in different time periods of 2011/2015, when sampling error was considered.

Change in survey schedule

Current survey concepts and methods are very similar to those introduced at the beginning of the survey in 1990. However, some changes have been made over the years to improve the accuracy and usefulness of the data. In January 2006, some improvements were made to the labour force survey schedule in order to fulfill the requirements of data users and also to provide additional information for planning purposes. The revision was made focusing on literacy, household economic activities, and informal sector employment and under employment etc.

From January , 2013 onwards, the lower bound of working age populations is considered as age 15, hence age 15 and over population is considered as working age population. The survey schedule is updated to obtain more precise information on following age, informal employment, informal sector, secondary occupation, wages & income , unemployment & trainings.

New Industry & Occupation classifications

From January 2013 onward the survey uses new industry & occupation classifications, such as

SLIC Rev 4:- Sri Lanka Standard Industry Classification based on International Standard Industry classification - Rev.4 (ISIC Rev 4)

SLSCO 08:- Sri Lanka Standard Classification of Occupation -2008 based on International Standard Classification of Occupation-2008 (ISCO 2008)

Note :

It is important to note that, all the data published here are the estimates based on a sample survey and these are subject to sampling errors. These sampling errors can be statistically evaluated from the survey results. Therefore, sampling error is normally measured in terms of the standard error of the particular variable. Standard error could be used to calculate the confidence limits with a prescribed accuracy where the true value of the estimates lies.

Further reliability of the estimates can be expressed in terms of Coefficient of Variation (CV). The CV is a relative measure of the sampling error and is calculated as sampling error divided by the expected value of the given characteristic.

In view of this, following table is given to show the estimates for some selected variables, it's standard error, CV and 95% Confidence interval.

It is also important to note that all the estimates we publish in this report are subject to sampling error and one should be cautious in the interpretation of results, especially with respect to the trends over time.

Estimate of Confidence Intervals for some selected characteristics

Year	Labour Force					Employed				
	No.	Standard error	C.V (%)	95% C.I.		No.	Standard error	C.V (%)	95% C.I.	
				Lower	Upper				Lower	Upper
2008 ¹	8,061,725	109,709	1.36	7,846,618	8,276,832	7,628,683	104,306	1.37	7,424,169	7,833,196
2009 ¹	8,051,089	107,213	1.33	7,840,876	8,261,302	7,579,835	102,161	1.35	7,379,527	7,780,143
2010 ¹	8,096,477	110,375	1.36	7,880,065	8,312,889	7,696,142	105,457	1.37	7,489,372	7,902,913
2011 ²	8,543,776	163,523	1.91	8,223,154	8,864,397	8,186,305	157,067	1.92	7,878,342	8,494,268
2012 ²	8,454,364	144,233	1.71	8,171,566	8,737,162	8,118,362	138,850	1.71	7,846,117	8,390,606
2013 ²	8,802,113	61,249	0.70	8,682,006	8,922,219	8,417,674	59,454	0.71	8,301,087	8,534,261
2014 ²	8,804,548	66,560	0.76	8,674,027	8,935,069	8,423,994	63,803	0.76	8,298,880	8,549,107
2013Q4 ²	8,670,987	126,440	1.46	8,422,624	8,919,350	8,319,680	121,517	1.46	8,080,987	8,558,373
2014Q4 ²	8,782,867	133,549	1.52	8,520,552	9,045,182	8,395,762	125,525	1.50	8,149,208	8,642,317
2015Q1 ²	8,924,716	122,426	1.37	8,684,252	9,165,180	8,502,270	116,189	1.37	8,274,057	8,730,483
2015Q2 ²	9,009,970	110,545	1.23	8,792,840	9,227,100	8,600,629	107,313	1.25	8,389,847	8,811,410
2015Q3 ²	9,008,135	111,434	1.24	8,789,259	9,227,010	8,554,179	108,887	1.27	8,340,306	8,768,051
2015Q4 ²	8,947,493	113,697	1.27	8,724,173	9,170,812	8,558,431	112,083	1.31	8,338,281	8,778,580

Year	Unemployed					Unemployment Rate				
	No.	Standard error	C.V (%)	95% C.I.		Rate	Standard error	C.V (%)	95% C.I.	
				Lower	Upper				Lower	Upper
2008 ¹	433,042	14,975	3.46	403,680	462,405	5.4	0.2	3.14	5.0	5.7
2009 ¹	471,254	15,683	3.33	440,503	502,004	5.9	0.2	3.07	5.5	6.2
2010 ¹	400,335	14,742	3.68	371,430	429,240	4.9	0.2	3.39	4.6	5.3
2011 ²	357,471	17,726	4.96	322,715	392,226	4.2	0.2	4.52	3.8	4.6
2012 ²	336,002	15,267	4.54	306,067	365,938	4.0	0.2	4.17	3.6	4.3
2013 ²	384,439	13,218	3.44	358,519	410,359	4.4	0.1	3.34	4.1	4.7
2014 ²	380,554	13,974	3.67	353,152	407,956	4.3	0.2	3.52	4.0	4.6
2013Q4 ²	351,307	27,187	7.7	297,903	404,710	4.1	0.3	7.46	3.5	4.6
2014Q4 ²	387,104	28,837	7.4	330,464	443,745	4.4	0.3	7.02	3.8	5.0
2015Q1 ²	422,446	31,595	7.48	360,389	484,503	4.7	0.3	7.16	4.1	5.4
2015Q2 ²	409,341	25,457	6.22	359,339	459,343	4.5	0.3	6.04	4.0	5.1
2015Q3 ²	453,956	26,638	5.87	401,634	506,278	5.0	0.3	5.73	4.5	5.6
2015Q4 ²	389,062	24,105	6.20	341,716	436,409	4.3	0.3	6.11	3.8	4.9

¹ - Excluding Northern provinces² - All the districts are included

ALTERNATIVE ESTIMATES

Alternative Estimates of Employment, Unemployment and Labour Force Characteristics

Official employment, unemployment and labour force characteristics are estimated at the Sri Lanka Labour Force Survey, based on the internationally comparable concepts and definitions recommended by the ILO. However the validity of the concepts and definitions used at the survey is questioned very often in some forums, for the appropriateness of these concepts and definitions in the Sri Lankan context.

The concepts and definitions, which were found to be controversial, are as below.

- (1) **Number of Hours of Work** : A person who work **at least one hour** during the reference week, is considered **employed**, under these definitions.
- (2) **Working Age Population** : All persons of **age 10 years and over** are considered to be in the working age, before 2013. However, this was changed as age 15 and over from 2013 onward.
- (3) **Employment Status** : All,
 - a) Paid employees, (those who work for wages/salaries).
 - b) Employers (who have at least one paid employee under them).
 - c) Own account workers (who carry out the economic activity without having anypaid employees).
 - d) Contributing family workers (who make their contribution to the economic activities carried out by their own household, without wages/salaries).

The validity of the above concepts and definitions is raised due to the following reasons.

- (1) **Number of Hours of Work** : Some pointed out that one hour per week is too low, to consider a person to be employed.
- (2) **Working Age Population** : Some pointed out those persons in the age group 10-14 yrs. are too young to be considered in the working age. (From 2013 onward the working age population is considered as age 15 and over).
- (3) **Employment Status** : Some pointed out that 'contributing family workers' may work in the family enterprise without payment because they have no other work, and so it is not appropriate to consider them as employed.

An attempt has been made to produce '**Alternative estimates of Employment, Unemployment and Labour Force Characteristics,**' by revising the original concepts and definitions so that the above issues are addressed as explained below.

The revisions made are,

- (1) **Number of Hours of Work** : Persons who work **20 hours or more per week only** are considered to be employed.
- (2) **Contributing Family Worker** : Contributing family workers are **not** considered as employed. Those contributing family workers who were reported to be seeking some other work are considered as **unemployed** and the rest of the unpaid family workers are considered as **economically inactive** (not in the labour force) so only, **a) paid employees b) employers and c) own account workers are considered to be employed.**

Following tables are based on the above alternative concepts and definitions.

Alternative Estimates of Employment, Unemployment and Labour Force Characteristics

TABLE 1 - LABOUR FORCE STATUS OF HOUSEHOLD POPULATION 15 YEARS & OVER (ALTERNATIVE ESTIMATES)

YEAR	HOUSEHOLD POPULATION (15 YEARS & OVER)		LABOUR FORCE PARTICI: RATE(%)	LABOUR FORCE				NOT IN LABOUR FORCE NUMBER
	TOTAL LABOUR FORCE	LABOUR FORCE		EMPLOYED		UNEMPLOYED		
				NUMBER	RATE (% TO TOTAL LABOUR FORCE)	NUMBER	RATE (% TO TOTAL LABOUR FORCE)	
2008 ¹	14,626,581	6,859,040	46.9	6,425,997	93.7	433,042	6.3	7,767,541
2009 ¹	14,876,264	6,836,598	46.0	6,365,344	93.1	471,254	6.9	8,039,665
2010 ¹	15,166,285	6,892,444	45.4	6,492,109	94.2	400,335	5.8	8,273,841
2011 ²	16,122,111	7,196,558	44.6	6,839,087	95.0	357,471	5.0	8,925,553
2012 ²	16,081,285	7,417,834	46.1	7,081,831	95.5	336,002	4.5	8,663,451
2013 ²	16,359,761	7,619,111	46.6	7,234,672	95.0	384,439	5.0	8,740,650
2014 ²	16,531,768	7,676,101	46.4	7,295,546	95.0	380,554	5.0	8,855,668
2013Q4 ²	16,364,677	7,660,705	46.8	7,309,398	95.4	351,307	4.6	8,703,972
2014Q4 ²	16,607,868	7,718,285	46.5	7,331,180	95.0	387,104	5.0	8,889,584
2015Q1 ²	16,638,339	7,838,029	47.1	7,415,584	94.6	422,446	5.4	8,800,309
2015Q2 ²	16,596,533	7,768,676	46.8	7,359,335	94.7	409,341	5.3	8,827,857
2015Q3 ²	16,742,309	7,826,194	46.7	7,372,238	94.2	453,956	5.8	8,916,115
2015Q4 ²	16,694,379	7,837,517	46.9	7,448,455	95.0	389,062	5.0	8,856,862

TABLE 2 - HISTORICAL TABLE OF NUMBER AND RATE OF UNEMPLOYMENT BY AGE (ALTERNATIVE ESTIMATES)

YEAR	AGE GROUP											
	TOTAL		15 - 19		20 - 24		25 - 29		30 - 39		40 & ABOVE	
	NO.	RATE	NO.	RATE	NO.	RATE	NO.	RATE	NO.	RATE	NO.	RATE
2008 ¹	433,042	6.3	68,487	27.1	166,409	20.8	93,202	10.9	58,838	3.6	46,107	1.4
2009 ¹	471,254	6.9	68,447	27.3	176,801	24.9	100,508	11.9	70,988	4.2	54,511	1.6
2010 ¹	400,335	5.8	59,339	26.5	154,788	22.5	84,777	10.5	59,041	3.6	42,390	1.2
2011 ²	357,471	5.0	45,900	21.0	151,882	20.7	73,545	8.7	55,880	3.2	30,263	0.8
2012 ²	336,056	4.5	47,690	23.6	136,553	19.5	63,135	7.3	52,541	2.8	36,084	1.0
2013 ²	384,439	5.0	52,652	22.9	157,353	21.7	69,413	8.5	58,352	3.1	46,669	1.2
2014 ²	380,615	5.0	54,300	25.9	151,742	22.2	73,421	9.3	57,906	3.0	43,185	1.1
2013Q4 ²	351,307	4.6	40,254	20.3	151,594	21.7	72,304	9.1	48,443	2.5	38,712	1.0
2014Q4 ²	387,165	5.0	56,924	26.5	164,642	23.4	61,800	7.6	62,054	3.2	41,684	1.0
2015Q1 ²	422,446	5.4	72,818	29.3	158,869	22.7	78,801	9.6	63,540	3.3	48,417	1.2
2015Q2 ²	409,341	5.3	52,674	25.7	163,952	24.2	85,724	10.3	61,855	3.1	45,136	1.1
2015Q3 ²	453,956	5.8	61,654	33.1	182,133	24.3	82,902	9.9	67,778	3.6	59,489	1.4
2015Q4 ²	389,062	5.0	51,747	25.3	120,949	17.0	96,624	12.0	72,731	3.7	47,011	1.1

1- Excluding Northern province

2 - All the districts are included

Table 3 - Currently Employed persons by Industry group (No. and percentage) (Based on ISIC Fourth Revision) - (Alternative estimates)

Year	Industry group																		
	Total	1	2	3	6	7	8	9	10	11	13	14	15	16	17	19	20	Other	
2013	No.	7,234,672	1,797,192	92,742	1,360,236	561,214	989,320	499,257	160,616	59,656	151,882	64,976	103,930	620,201	305,115	136,759	116,217	170,324	45,035
	%	100.0	24.8	1.3	18.8	7.8	13.7	6.9	2.2	0.8	2.1	0.9	1.4	8.6	4.2	1.9	1.6	2.4	0.6
2014	No.	7,295,546	1,716,094	74,133	1,396,819	579,647	970,132	510,933	175,533	66,645	157,549	49,443	109,006	637,806	319,326	135,245	135,982	204,541	56,715
	%	100.0	23.5	1.0	19.1	7.9	13.3	7.0	2.4	0.9	2.2	0.7	1.5	8.7	4.4	1.9	1.9	2.8	0.8
2013Q4	No.	7,309,398	1,919,204	79,679	1,346,366	536,051	961,763	520,591	161,235	44,019	123,793	46,387	104,901	660,000	316,230	144,889	118,806	177,875	47,611
	%	100.0	26.3	1.1	18.4	7.3	13.2	7.1	2.2	0.6	1.7	0.6	1.4	9.0	4.3	2.0	1.6	2.4	0.7
2014Q4	No.	7,331,180	1,859,358	60,921	1,318,926	607,965	944,046	489,881	176,797	66,015	159,215	53,955	122,399	611,243	343,167	143,246	124,345	191,352	58,347
	%	100.0	25.4	0.8	18.0	8.3	12.9	6.7	2.4	0.9	2.2	0.7	1.7	8.3	4.7	2.0	1.7	2.6	0.8
2015Q1	No.	7,415,584	1,812,189	79,101	1,422,450	549,459	1,003,333	508,642	175,489	59,362	153,395	60,394	122,615	669,872	270,824	130,546	136,674	199,113	62,127
	%	100.0	24.4	1.1	19.2	7.4	13.5	6.9	2.4	0.8	2.1	0.8	1.7	9.0	3.7	1.8	1.8	2.7	0.8
2015Q2	No.	7,359,335	1,739,275	37,715	1,376,727	572,636	939,485	503,050	181,732	59,123	164,580	64,885	133,071	661,235	371,554	137,363	154,186	191,603	71,114
	%	100.0	23.6	0.5	18.7	7.8	12.8	6.8	2.5	0.8	2.2	0.9	1.8	9.0	5.0	1.9	2.1	2.6	1.0
2015Q3	No.	7,372,238	1,650,625	76,287	1,472,014	581,189	1,034,998	510,351	202,059	45,549	150,430	67,722	130,244	623,160	333,165	136,608	144,690	163,127	50,021
	%	100.0	22.4	1.0	20.0	7.9	14.0	6.9	2.7	0.6	2.0	0.9	1.8	8.5	4.5	1.9	2.0	2.2	0.7
2015Q4	No.	7,448,455	1,672,025	53,739	1,373,771	580,966	1,069,561	536,652	214,017	58,197	155,969	79,148	127,007	632,428	326,629	175,239	134,594	200,263	58,250
	%	100.0	22.4	0.7	18.4	7.8	14.4	7.2	2.9	0.8	2.1	1.1	1.7	8.5	4.4	2.4	1.8	2.7	0.8

Note: The tabulation groups based on ISIC (Rev.4) are indicated as A,B,C.....U. Due to the limitations on reliability (based on CV),some of these groups have been combined.

Industry Group

1 Agriculture, forestry and fishing (A)

2 Mining & quarrying (B)

3 Manufacturing (C)

6 Construction, Electricity, gas, steam and air conditioning supply, Water supply, sewerage, waste management and remediation activities (D, E,F)

7 Wholesale and retail trade, repair of motor vehicles and motor cycles(G)

8 Transportation and storage (H)

9 Accommodation and food services activities (I)

10 Information and communication (J)

11 Financial and insurance activities (K)

13 Professional, scientific and technical activities (M)

14 Administrative and support service activities (N)

15 Public administration and defence compulsory social security (O)

16 Education (P)

17 Human health and social work activities (Q)

19 Other service activities (S)

20 Activities of households as employers; undifferentiated goods and services - producing activities of households for own use (T)

Other

Other

12 Real estate activities (L)

18 Arts, entertainment and recreation (R)

21 Activities of extra territorial organizations & bodies (U)