



**QUARTERLY REPORT OF THE
SRI LANKA LABOUR FORCE
SURVEY**

Quarterly Report – 2016

Third Quarter

**DEPARTMENT OF CENSUS & STATISTICS
MINISTRY OF NATIONAL POLICIES AND ECONOMIC
AFFAIRS**

ISBN 978 – 955 – 702 – 004 – 4

Preface

In the past, information on labour force characteristics, employment and unemployment etc. were collected through labour force and socio - economic surveys conducted at five yearly time intervals. However, the employment and unemployment data are required at very short intervals to monitor the programs made in the employment generating policies of the government. Therefore, to satisfy this need, the Department of Census and Statistics (DCS) designed a labour force survey on a quarterly basis, to measure the levels and trends of employment, unemployment and labour force in Sri Lanka on a continuous basis. This survey was commenced from the first quarter of 1990 and this report is the hundredth in the series of quarterly reports published so far.

Current survey concepts and methods are very similar to those introduced at the beginning of the survey in 1990. However, some changes were made over the years to improve the accuracy and usefulness of the data. The significant revisions were made on the labour force survey questionnaire in 1996, 2006 and the latest revision was in 2013. The revised version was introduced for the survey conducted in 2013 First quarter, and this report consists with statistics using new concepts and classifications.

The field work of the survey for the third quarter 2016 was done in April, May and June in year 2016. This survey covered the whole country. A nationally representative annual sample of about 25,750 housing units have been selected for the survey in 2016. This report is based on a quarterly sample of 6,440 housing units.

*Dr. A.J. Satharasinghe
Director General of Census & Statistics*

*Department of Census & Statistics,
"Sankhyana Mandiraya",
306/71,
Poldurva Road,
Baththaramulla
.....03.2017.*

Acknowledgements

This report is hundredth in the series of the Quarterly Labour Force Survey which was commenced from the first quarter 1990 and is being continued by the Department of the Census and Statistics.

Planning and execution of the survey was done by staff of the Sample Survey Division under the guidance of Additional Director General, Mrs. I.R. Bandara and under the direction of Mr. M.D. Sunil Senanayake Deputy Director, Sample Surveys Division.

The survey activities were organized and supervised by Mrs. W.A.C.Wijebandara, Mr. H.T.Fonseka, Mr. K.S.R.L.Senadeera, Mrs. M.D.D.D.Deepawansa, Mrs. C.Jayawickrama, Mr. A.K.D.C.N.S.Karunarathna, Mr. K.Weerasiri, Mrs. U.S.Dilrukshi, Mr. M.L.K.P.Kumara, Mrs. M.W.L.C.M. Chandrarathne, Mrs. P.D.Nanayakkara, Ms.R.P.M.Subhashini, Statisticians & Senior Statistician, of the sample surveys division.

The computer data processing and final tabulations were done by Mrs. W.A.S.M.P. Gunasekara, Mr. A.M.A.E.Atapattu, Statistical Officers and Mrs. A.N. Ekanayake, Statistical Assistant of the Sample Surveys Division, under the supervision of Mrs. W.A.C.Wijebandara, Statistician. The statistical officers, statistical assistants, Information and Communication Technology assistants, Data Entry Officers/Coding clerks and development officers (iii), of the sample survey division are acknowledged for their valuable contribution during the whole survey process.

The Information & Communication Technology Division, under the direction of Mr. S.A.S. Bandulasena, Additional Director General (ICT) and under the supervision of Mr. P.M.R.Fernando, Deputy Director (ICT) and Mr. W.H.P.N. Weerasiri Deputy Director (ICT), was responsible for the survey data entry and preparation of data entry and computer edits programmes. Data entry was decentralized and manual editing, coding & data entry were done by responsible officers at district secretariats in all districts. Developing of sample selection programme and its related computer software was done by Mr. K.M.R. Wickramasinghe, Deputy Director (ICT).

This publication was organized and prepared by Mrs. W.A.C. Wijebandara and A.K.D.C.N.S.Karunarathna, Statisticians, Sample Surveys Division, assisted by Mrs. W.A.S.M.P. Gunasekara, Mr. A.M.A.E.Atapattu, Statistical officers. Mr. M.G. Perera, Statistical officer and Mrs. Asanthi Ekanayaka, Statistical Assistant assisted at the editing stage.

District staff of the Department who worked on the survey deserves a special word of thanks, The Deputy Directors/ Senior Statisticians/ Statisticians supervised the survey and field Statistical Officers, worked hard at the data collection stage, to make this survey a success. Printing of the report was done at the staff of Printing Division, under the supervision of Mr. M.J.M Fernando, Statistician.

Finally, I wish to express my appreciation to all the respondents of the survey for their valuable cooperation.

Sri Lanka Labour Force Survey
Summary Statistics on Labour Force Characteristics
2016 3rd Quarter
(All Island)

15 years & over population

	Total	Male	Female	Urban	Rural
Population (15 years & over)	15,560,390	7,086,406	8,473,984	2,678,303	12,882,087
Labour force in this age group	8,376,002	5,315,532	3,060,469	1,333,508	7,042,494
Labour force participation rate	53.8	75.0	36.1	49.8	54.7
Employed population	7,999,821	5,171,424	2,828,397	1,275,886	6,723,935
Employment rate	95.5	97.3	92.4	95.7	95.5
Unemployed population	376,180	144,108	232,072	57,622	318,558
Unemployment rate	4.5	2.7	7.6	4.3	4.5
Not in labour force	7,184,388	1,770,874	5,413,514	1,344,795	5,839,593

20 years & over population

	Total	Male	Female	Urban	Rural
Population (20 years & over)	14,040,724	6,315,074	7,725,651	2,439,633	11,601,091
Labour force in this age group	8,143,602	5,160,745	2,982,857	1,299,033	6,844,569
Labour force participation rate	58.0	81.7	38.6	53.2	59.0
Employed population	7,830,332	5,050,923	2,779,409	1,250,034	6,580,298
Employment rate	96.2	97.9	93.2	96.2	96.1
Unemployed population	313,271	109,823	203,448	48,999	264,271
Unemployment rate	3.8	2.1	6.8	3.8	3.9
Not in labour force	5,897,122	1,154,328	4,742,794	1,140,600	4,756,522

Selected Labour Force Indicators ...

Indicator	Year									
	2011	2012	2013	2014	2015	2014Q3	2015Q3	2016Q1	2016Q2	2016Q3
Labour force participation rate										
By Gender										
Total	52.9	52.5	53.7	53.2	53.8	53.1	53.8	54.1	53.3	53.8
Male	74	74.9	74.9	74.6	74.7	74.6	74.8	75.5	74.9	75
Female	34.3	32.9	35.4	34.6	35.9	34.3	35.6	36.3	35.1	36.1
By residential sector										
Total	52.9	52.5	53.7	53.2	53.8	53.1	53.8	54.1	53.3	53.8
Urban	47.8	48.3	47.7	48.7	48.6	47	48.4	48.5	49.6	49.8
Rural	53.8	53.4	54.9	54.1	54.8	54.4	54.8	55.2	54	54.7
Unemployment Rate										
By Gender										
Total	4.2	4	4.4	4.3	4.7	4.2	5.1	4.2	4.6	4.5
Male	2.7	2.8	3.2	3.1	3	3.3	3.5	3.1	3.1	2.7
Female	7.1	6.3	6.6	6.5	7.6	6	7.8	6.1	7.3	7.6
By selected age Group (Year)										
20 – 29	12.4	11.3	13.1	13.6	14.2	14	15	14.2	14.4	14.3
20 – 24	17.7	16.7	19.3	19.9	19.7	20.8	21.7	19.7	21.2	19.8
25 – 29	7.7	6.6	7.6	8.2	9.4	8.1	8.9	9.4	8.3	9.7
By selected educational level										
GCE A/L and above										
Total	9.1	7.6	8.7	8.2	9.2	8.2	10.3	7.7	8.6	9.3
Male	5.4	4.6	5.7	5.4	4.7	6.5	6.1	5.9	4.6	4.5
Female	13.2	10.8	11.8	11.1	13.5	9.9	14.3	9.5	12.5	13.9
Employed population										
By Gender										
Total	7,591,591	7,488,704	7,681,279	7,700,489	7,830,976	7,729,955	7,807,346	7,968,931	7,815,280	7,999,821
Male	5,061,214	5,046,057	5,024,340	5,075,426	5,097,798	5,120,891	5,115,215	5,102,435	5,100,734	5,171,424
Female	2,530,377	2,442,647	2,656,938	2,625,064	2,733,178	2,609,064	2,692,131	2,866,496	2,714,545	2,828,397
By industry (Percentage)										
Total	7,591,591	7,488,704	7,681,279	7,700,489	7,830,976	7,729,955	7,807,346	7,968,931	7,815,280	7,999,821
%	100	100	100	100	100	100	100	100	100	100
Agriculture	2,511,266	2,333,342	2,321,215	2,222,859	2,244,547	2,265,894	2,168,233	2,274,722	1,961,818	2,168,982
%	33.1	31.2	30.2	28.9	28.7	29.3	27.8	28.5	25.1	27.1
Industry	1,819,608	1,940,615	1,996,730	2,027,426	2,018,171	2,042,957	2,105,576	2,068,453	2,121,365	2,144,808
%	24	25.9	26	26.3	25.8	26.4	27	26	27.1	26.8
Services	3,260,717	3,214,746	3,363,334	3,450,205	3,568,259	3,421,103	3,533,536	3,625,756	3,732,097	3,686,032
%	43	42.9	43.8	44.8	45.6	44.3	45.3	45.5	47.8	46.1
By no. of hours worked per week (percentage)										
Total	100	100	100	100	100	100	100	100	100	100
0#	5.2	4.5	5.2	5.2	5.5	4.1	4.9	3.4	5.7	4.3
1 – 9	1.7	1.1	1.8	1.3	1.7	1	1.5	1.5	1.6	1.7
10 – 39	29.9	26.1	27.5	27.6	27.2	24.7	26.7	27.3	26	26
40 & above	63.2	68.3	65.5	65.9	65.7	70.2	66.9	67.7	66.6	68

has a job but not at work during the reference week

Note : Working age population considered as (age 15 & over population)

CONTENTS

	Page No.
Preface	iii
Acknowledgements	v
Highlights	vii
Summary Statistics	viii
Contents	ix
Labour Force	1
Employment	2
Unemployment	3
Tables	
Table No.	
1. Historical table of Labour Force Status (current) of the Household Population, 15 years of Age and over - Both Sexes	4
1A. Historical table of Labour Force Status (current) of the Household Population, 15 years of Age and over – Male	5
1B. Historical table of Labour Force Status (current) of the Household Population, 15 years of Age and over – Female	5
2. Labour Force Status (current) of the Household Population 15 years of Age and over, by Age - Both Sexes	6
2A. Labour Force Status (current) of the Household Population 15 years of Age and over, by Age – Male	7
2B. Labour Force Status (current) of the Household Population 15 years of Age and over, by Age – Female	7
3. Historical table of Currently Employed persons by Age Groups (percentage) - Both Sexes	8
3A. Historical table of Currently Employed persons by Age Groups (percentage) – Male	8
3B. Historical table of Currently Employed persons by Age Groups (percentage) – Female	8
4. Historical table of Currently Employed persons by Level of Education (percentage) - Both Sexes	9
4A. Historical table of Currently Employed persons by Level of Education (percentage) – Male	9
4B. Historical table of Currently Employed persons by Level of Education (percentage) – Female	9
5. Historical table of Currently Employed persons by Employment Status (percentage) - Both Sexes	10
5A. Historical table of Currently Employed persons by Employment Status (percentage) – Male	10
5B. Historical table of Currently Employed persons by Employment Status (percentage) – Female	10
6. Currently employed persons by Industry group (Based on ISIC Rev.4) – Both sexes	11
6A. Currently employed persons by Industry group (Based on ISIC Rev.4) – Male	12
6B. Currently employed persons by Industry group (Based on ISIC Rev.4) – Female	13
6C. Historical table of currently employed population by major industry group - Both sexes	14
6D. Historical table of currently employed population by major industry group (percentage) - Both sexes	14
7. Currently employed persons by Occupation group (Based on ISCO 08) - Both sexes	15
7A. Currently employed persons by Occupation group (Based on ISCO 08) – Male	16
7B. Currently employed persons by Occupation group (Based on ISCO 08) – Female	16
8. Currently Employed persons by hours per week actually worked at the main job and Major Industrial group (percentage) - Both Sexes	17
9. Historical table of Currently Unemployed persons by Age Groups (percentage) - Both Sexes	18
9A. Historical table of Currently Unemployed persons by Age Groups (percentage) – Male	18
9B. Historical table of Currently Unemployed persons by Age Groups (percentage) – Female	18
10. Historical table of Currently Unemployed persons by Level of Education (percentage) - Both Sexes	19
10A. Historical table of Currently Unemployed persons by Level of Education (percentage) – Male	19
10B. Historical table of Currently Unemployed persons by Level of Education (percentage) – Female	19
11. Currently Unemployed Persons by Sex and Duration of Unemployment	20
12. Standard error and coefficient of variation of selected variables	21

Appendix 1: Explanatory Notes

Appendix 2: Alternative estimates of employment, unemployment and labour force characteristics

Introduction

Highlights

The statistics of this bulletin are coming from the new series of statistics after the reweighting process of labour force statistics. The detailed information on reweighting is available in "Sri Lanka Labour Force Survey Annual Report 2015" and "2012 Census based Re-weighting of Labour Force Survey Estimates" under the sub heading "Labour Force" in DCS web-site www.statistics.gov.lk.

- Labour force participation rate is 53.8% for the Third Quarter of 2016.
- Unemployment rate for the survey period is 4.5%.

Inside

Labour Force	1
Employment	2
Unemployment	3
Selected Labour Force Indicators	4

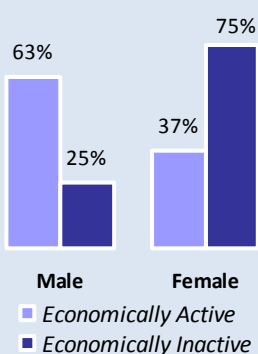


Figure 1 : Distribution of Economically active/Inactive population - Third quarter - 2016

Sri Lanka Labour Force Survey (LFS) is designed to measure the levels and trends of employment, unemployment and labour force in Sri Lanka. LFS has been conducted quarterly, since the first quarter of 1990.

This bulletin contains labour force, employment and unemployment statistics for the third quarter 2016 based on the data collected in July, August and September covering the whole country.

Labour Force

(Economically Active Population)

Table 1 : Economically active population by gender and sector - Third Quarter 2016

Sector	Economically active population					
	Total	%	Male	%	Female	%
Sri Lanka	8,376,002	100.0	5,315,532	63.5	3,060,469	36.5
Urban	1,333,508	100.0	870,441	65.3	463,067	34.7
Rural	6,598,355	100.0	4,185,612	63.4	2,412,743	36.6
Estate	444,139	100.0	259,479	58.4	184,660	41.6

Table 2 : Economically inactive population by gender and sector - Third Quarter 2016

Sector	Economically inactive population					
	Total	%	Male	%	Female	%
Sri Lanka	7,184,388	100.0	1,770,874	24.6	5,413,514	75.4
Urban	1,344,795	100.0	344,019	25.6	1,000,776	74.4
Rural	5,599,188	100.0	1,364,622	24.4	4,234,565	75.6
Estate	240,406	100.0	62,232	25.9	178,173	74.1

Table 3 : LFPR by gender and year

Year	Total	Male	Female
2011	52.9	74.0	34.3
2012	52.5	74.9	32.9
2013	53.7	74.9	35.4
2014	53.2	74.6	34.6
2015	53.8	74.7	35.9
2013 Q3	53.8	74.8	35.7
2014 Q3	53.1	74.6	34.3
2015 Q3	53.8	74.8	35.6
2016 Q1	54.1	75.5	36.3
2016 Q2	53.3	74.9	35.1
2016 Q3	53.8	75.0	36.1

Table 3 provides the information on LFPRs since year 2011. Referring the Table 3, It is important to note that, male participation to the labour force is always higher than that of females.

Considering the Table 4, the distribution of LFPR by age group and by gender depicts high male participation compared to female in all age groups. The highest participation rate for male was reported from age group 35-39 years (98.1%), while that for female was reported from the age group 45-49 years which is 54.1 percent.

Labour Force

This is the currently economically active population. Which is the number of persons (age 15 years & above) who are employed or unemployed during the reference week.

Labour force participation rate (LFPR)

Labour force population expressed as a percentage of the population, age 15 years and over.

According to the Table 1, the estimated economically active population is about 8.4 million in the Third quarter 2016. Of which 63.5 percent are males and 36.5 percent are females. Out of the economically inactive population 24.6 percent are males and 75.4 percent are females (Table 2).

Table 4 : LFPR by age group and gender - Third Quarter 2016

Age group (Years)	Total	Male	Female
Sri Lanka	53.8	75.0	36.1
15 - 19	15.3	20.1	10.4
20 - 24	55.5	71.7	42.0
25 - 29	64.4	93.1	42.8
30 - 34	66.1	97.8	41.0
35 - 39	69.1	98.1	46.5
40 - 44	74.6	97.2	53.9
45 - 49	73.2	95.4	54.1
50 - 54	67.0	94.5	45.1
55 - 59	61.0	85.4	40.1
60+	31.2	49.3	16.6

Definition of 'Employed'

Persons, who worked at least one hour during the reference period, as paid employees, employers, own account workers or contributing family workers are said to be employed. This also includes persons with a job but not at work during the reference period.

Reference Period :

Previous week of the survey week

The Employment Rate

The proportion of employed population to the total labour force.

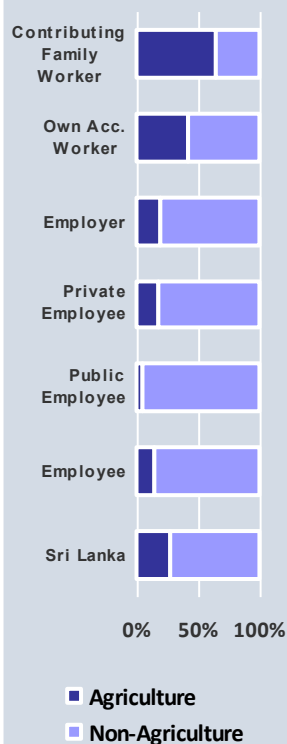


Figure 2 : Distribution of employed population by employment status and Agriculture/ Non-Agriculture sector - Third quarter 2016

Employment ...

Table 5 : Distribution of Employed population by main industry - Third Quarter 2015 - Third quarter 2016

Quarter	Sri Lanka	Major Industry Group		
		Agriculture	Industries	Services
2015 Q3 (No.)	7,807,346	2,168,233	2,105,576	3,533,536
(%)	100.0	27.8	27.0	45.3
2015 Q4 (No.)	7,828,639	2,200,361	1,957,031	3,671,247
(%)	100.0	28.1	25.0	46.9
2016 Q1 (No.)	7,968,931	2,274,722	2,068,453	3,625,756
(%)	100.0	28.5	26.0	45.5
2016 Q2 (No.)	7,815,280	1,961,818	2,121,365	3,732,097
(%)	100.0	25.1	27.1	47.8
2016 Q3 (No.)	7,999,821	2,168,982	2,144,808	3,686,032
(%)	100.0	27.1	26.8	46.1

Table 5 shows the percentage distribution of employed population by main industry from third quarter 2015 to third quarter 2016. During third quarter of 2016, the total number of employed persons in Sri Lanka is estimated as about 8.0 million. Of which, about 46.1 percent engaged in Service sector, 27.1 percent in Agriculture sector and 26.8 percent in Industries sector.

Table 6 : Distribution of employed population by employment status in Agriculture and Non - Agriculture sectors - Third quarter 2016

Employment Status	Sri Lanka		Sector			
			Agriculture		Non-Agriculture	
	No.	%	No.	%	No.	%
Sri Lanka	7,999,821	100.0	2,168,982	27.1	5,830,839	72.9
Employee	4,744,995	100.0	716,617	15.1	4,028,378	84.9
Public	1,160,518	100.0	64,727	5.6	1,095,791	94.4
Private	3,584,478	100.0	651,891	18.2	2,932,587	81.8
Employer	187,362	100.0	35,313	18.8	152,049	81.2
Own Account Worker	2,442,120	100.0	1,008,398	41.3	1,433,722	58.7
Contributing Family Worker	625,344	100.0	408,654	65.3	216,690	34.7

Table 7 : Percentage distribution of Employed population by main industry & gender - Third quarter 2016

Major Industry Group	Sri Lanka	Gender	
		Male	Female
Sri Lanka	100.0	100.0	100.0
Agriculture	27.1	25.4	30.3
Industry	26.8	26.9	26.7
Services	46.1	47.8	43.0

Main industry categories and sub sectors

Agriculture

1. Agriculture Forestry and Fishery (A)

Industries

1. Mining & Quarrying (B)
2. Manufacturing (C)
3. Construction, Electricity, gas, steam and air conditioning supply, Water supply, sewerage, waste management and remediation activities (D, E,F)

Services

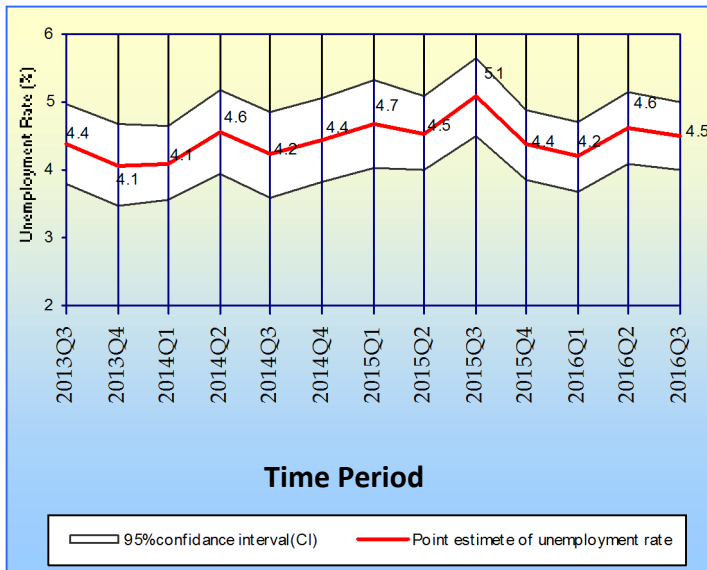
1. Wholesale and retail trade, repair of motor vehicles and motor cycles (G)
2. Transportation and storage (H)
3. Accommodation and food services activities (I)
4. Information and communication (J)
5. Financial and insurance activities (K)
6. Professional, scientific and technical activities (M)
7. Administrative and support service activities (N)
8. Public administration and defense compulsory social security (O)
9. Education (P)
10. Human health and social work activities (Q)
11. Other service activities (S)
12. Activities of households as employers; undifferentiated goods and services - producing activities of households for own use (T)
13. Real estate activities (L) Arts, entertainment and recreation (R) Activities of extra territorial organizations & bodies (U)

As could be seen from the Figure 2 & Table 6 contributing family workers are highly concentrated in Agriculture sector.

Table 7 depicts the percentage distribution of male and female employed population by main industries. The highest employment share is in service sector and this is true for both male & female, while the lowest shares are for industry sector. Among employed females 30.3 percent is in agriculture sector while this share is 25.4 percent for males.

Unemployment ...

Figure 3: Unemployment rates and its 95% confidence intervals (2013Q3-2016Q3)



¹Sampling error : When a sample, rather than the entire population, is surveyed, estimates differ from the true values of population they represent. This difference, or sampling error, occurs by chance, and its variability is measured by the sampling error of the estimate.

For more details, please refer the explanatory note given under the labour force link in the DCS website; www.statistics.gov.lk

Table 8: Unemployment rate by age group and gender – Third quarter 2016

Age group (Years)	Sri Lanka	Gender	
		Male	Female
Sri Lanka	4.5	2.7	7.6
15–24	21.6	15.7	30.6
25–29	9.7	4.4	18.3
Over 30	1.4	0.7	2.5

These figures are to be treated with caution as the corresponding CV (Coefficient of variation) values are high.

As can be seen from Table 8, overall unemployment rate reported for female is 7.6 percent and it is 2.7 percent for male. Youth unemployment rate (age 15 – 24 years) corresponding to the third quarter 2016 is 21.6 percent and that reports the highest unemployment rate among all other age groups. Further unemployment rates for male and female are 15.7 and 30.6 percent respectively for age group 15 – 24.

The survey results further revealed that the unemployment among females is higher than that of males, in all age groups. Youth and female unemployment contribute more to the overall unemployment of the country.

The highest unemployment rate is reported from the G.C.E (A/L) and above group which is about 9.3 percent. Corresponding percentages are 4.5 percent and 13.9 percent for male and female respectively. Female unemployment rates are higher than those of males in all levels of education.

Table 9: Unemployment rate by level of education – Third quarter 2016

Level of Education	Unemployment Rate (%)		
	Sri Lanka	Male	Female
Sri Lanka	4.5	2.7	7.6
Below GCE O/L	2.5	1.9	3.9
GCE O/L	5.8	4.2	8.8
GCE A/L & above	9.3	4.5	13.9

This further shows that the problem of unemployment is more acute in the case of educated females than educated males, which was observed consistently over the results of previous survey rounds as well.

Definition of 'Unemployed'

Persons available and/or looking for work, and who did not work and taken steps to find a job during last four weeks and ready to accept a job given a work opportunity within next two weeks are said to be unemployed.

The Unemployment Rate

The proportion of unemployed population to the total labour force.

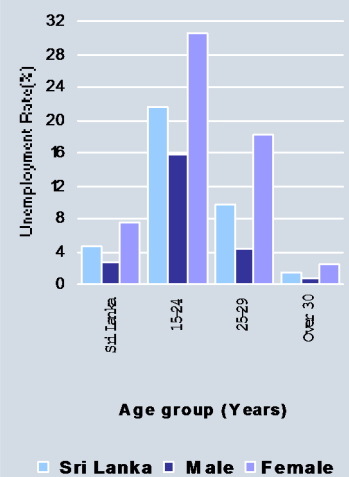


Figure 3: Unemployment rate by age group and gender – Third quarter 2016

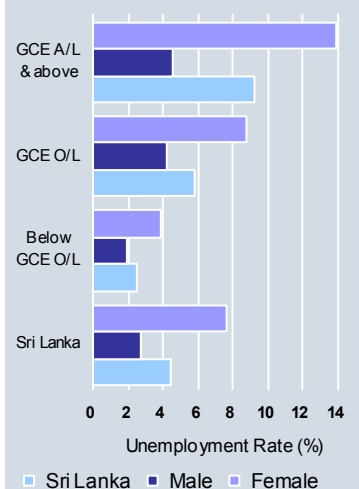


Figure 4: Unemployment rate by level of education and gender – Third quarter 2016

**TABLE 1 - HISTORICAL TABLE OF LABOUR FORCE STATUS (CURRENT) OF THE HOUSEHOLD
POPULATION, 15 YEARS OF AGE AND OVER - BOTH SEXES**

YEAR	HOUSEHOLD POPULATION (15 YEARS & OVER)	LABOUR FORCE						NOT IN LABOUR FORCE NUMBER
		TOTAL LABOUR FORCE	LABOUR FORCE PARTICI: RATE(%)	EMPLOYED		UNEMPLOYED		
				NUMBER	RATE (% TO TOTAL LABOUR FORCE)	NUMBER	RATE (% TO TOTAL LABOUR FORCE)	
2009 ¹	14,876,264	8,051,089	54.1	7,579,835	94.1	471,254	5.9	6,825,175
2010 ¹	15,166,285	8,096,477	53.4	7,696,142	95.1	400,335	4.9	7,069,808
2011 ²	14,975,989	7,926,445	52.9	7,591,591	95.8	334,854	4.2	7,049,544
2012 ²	14,857,578	7,798,407	52.5	7,488,704	96.0	309,703	4.0	7,059,171
2013 ²	14,959,065	8,033,804	53.7	7,681,279	95.6	352,526	4.4	6,925,260
2014 ²	15,134,484	8,048,884	53.2	7,700,489	95.7	348,395	4.3	7,085,600
2015 ²	15,281,945	8,214,473	53.8	7,830,976	95.3	383,496	4.7	7,067,473
2016Q1 ²	15,382,201	8,318,617	54.1	7,968,931	95.8	349,686	4.2	7,063,584
2016Q2 ²	15,383,921	8,193,266	53.3	7,815,280	95.4	377,987	4.6	7,190,655
2016Q3 ²	15,560,390	8,376,002	53.8	7,999,821	95.5	376,180	4.5	7,184,388

¹ - Excluding Northern province

² - All the districts are included and the tables consist with reweighted estimates.

**TABLE 1A - HISTORICAL TABLE OF LABOUR FORCE STATUS (CURRENT) OF THE HOUSEHOLD
POPULATION, 15 YEARS OF AGE AND OVER - MALE**

YEAR	HOUSEHOLD	LABOUR FORCE						NOT IN
	POPULATION	TOTAL	LABOUR	EMPLOYED		UNEMPLOYED		LABOUR
	(15 YEARS & OVER)	LABOUR FORCE	FORCE PARTICI: RATE(%)	NUMBER	RATE (% TO TOTAL LABOUR FORCE)	NUMBER	RATE (% TO TOTAL LABOUR FORCE)	FORCE NUMBER
2009 ¹	6,925,821	5,173,106	74.7	4,949,825	95.7	223,281	4.3	1,752,715
2010 ¹	7,078,246	5,310,872	75.0	5,125,763	96.5	185,108	3.5	1,767,374
2011 ²	7,027,780	5,203,267	74.0	5,061,214	97.3	142,053	2.7	1,824,513
2012 ²	6,932,520	5,192,686	74.9	5,046,057	97.2	146,629	2.8	1,739,835
2013 ²	6,926,750	5,187,873	74.9	5,024,341	96.8	163,533	3.2	1,738,877
2014 ²	7,025,780	5,240,034	74.6	5,075,425	96.9	164,609	3.1	1,785,746
2015 ²	7,036,944	5,255,593	74.7	5,097,798	97.0	157,794	3.0	1,781,352
2016Q1 ²	6,973,384	5,264,413	75.5	5,102,435	96.9	161,978	3.1	1,708,971
2016Q2 ²	7,030,644	5,264,919	74.9	5,100,734	96.9	164,185	3.1	1,765,725
2016Q3 ²	7,086,406	5,315,532	75.0	5,171,424	97.3	144,108	2.7	1,770,874

**TABLE 1B - HISTORICAL TABLE OF LABOUR FORCE STATUS (CURRENT) OF THE HOUSEHOLD
POPULATION, 15 YEARS OF AGE AND OVER - FEMALE**

YEAR	HOUSEHOLD	LABOUR FORCE						NOT IN
	POPULATION	TOTAL	LABOUR	EMPLOYED		UNEMPLOYED		LABOUR
	(15 YEARS & OVER)	LABOUR FORCE	FORCE PARTICI: RATE(%)	NUMBER	RATE (% TO TOTAL LABOUR FORCE)	NUMBER	RATE (% TO TOTAL LABOUR FORCE)	FORCE NUMBER
2009 ¹	7,950,443	2,877,983	36.2	2,630,010	91.4	247,973	8.6	5,072,460
2010 ¹	8,088,039	2,785,605	34.4	2,570,379	92.3	215,226	7.7	5,302,434
2011 ²	7,948,209	2,723,178	34.3	2,530,377	92.9	192,801	7.1	5,225,031
2012 ²	7,925,058	2,605,721	32.9	2,442,647	93.7	163,074	6.3	5,319,336
2013 ²	8,032,315	2,845,931	35.4	2,656,938	93.4	188,993	6.6	5,186,383
2014 ²	8,108,704	2,808,850	34.6	2,625,064	93.5	183,786	6.5	5,299,854
2015 ²	8,245,001	2,958,880	35.9	2,733,178	92.4	225,702	7.6	5,286,121
2016Q1 ²	8,408,817	3,054,204	36.3	2,866,496	93.9	187,708	6.1	5,354,613
2016Q2 ²	8,353,277	2,928,347	35.1	2,714,545	92.7	213,802	7.3	5,424,930
2016Q3 ²	8,473,984	3,060,469	36.1	2,828,397	92.4	232,072	7.6	5,413,514

¹ - Excluding Northern province

² - All the districts are included and the tables consist with reweighted estimates.

TABLE 2 - LABOUR FORCE STATUS (CURRENT) OF THE HOUSEHOLD POPULATION 15 YEARS OF AGE AND OVER, BY AGE - BOTH SEXES

AGE	HOUSEHOLD POP: (15 YEARS & OVER)	LABOUR FORCE						NOT IN LABOUR FORCE NUMBER
		TOTAL LABOUR FORCE	LABOUR FORCE PARTICI: RATE(%)	EMPLOYED		UNEMPLOYED		
				NUMBER	RATE (% TO TOTAL LABOUR FORCE)	NUMBER	RATE (% TO TOTAL LABOUR FORCE)	
ALL AGES	15,560,390	8,376,002	53.8	7,999,821	95.5	376,180	4.5	7,184,388
15 - 19 YRS	1,519,665	232,399	15.3	169,490	72.9	62,910	27.1	1,287,266
20 - 24 YRS	1,292,591	717,487	55.5	575,575	80.2	141,913	19.8	575,103
25 - 29 YRS	1,324,723	853,348	64.4	770,933	90.3	82,415	9.7	471,375
30 - 39 YRS	2,858,434	1,932,980	67.6	1,879,451	97.2	53,529	2.8	925,453
40 + YRS	8,564,977	4,639,787	54.2	4,604,374	99.2	35,413	0.8	3,925,190

TABLE 2A - LABOUR FORCE STATUS (CURRENT) OF THE HOUSEHOLD POPULATION 15 YEARS OF AGE AND OVER, BY AGE - MALE

AGE	HOUSEHOLD POP: (15 YEARS & OVER)	LABOUR FORCE						NOT IN LABOUR FORCE NUMBER
		TOTAL LABOUR FORCE	LABOUR FORCE PARTICI: RATE(%)	EMPLOYED		UNEMPLOYED		
				NUMBER	RATE (% TO TOTAL LABOUR FORCE)	NUMBER	RATE (% TO TOTAL LABOUR FORCE)	
ALL AGES	7,086,406	5,315,532	75.0	5,171,424	97.3	144,108	2.7	1,770,874
15 - 19 YRS	771,333	154,787	20.1	120,502	77.8	34,285	22.2	616,546
20 - 24 YRS	588,704	422,171	71.7	365,839	86.7	56,333	13.3	166,533
25 - 29 YRS	569,370	529,799	93.1	506,514	95.6	23,285	4.4	39,571
30 - 39 YRS	1,259,445	1,233,034	97.9	1,220,521	99.0	12,512	1.0	26,411
40 + YRS	3,897,554	2,975,741	76.3	2,958,048	99.4	17,693	0.6	921,813

TABLE 2B - LABOUR FORCE STATUS (CURRENT) OF THE HOUSEHOLD POPULATION 15 YEARS OF AGE AND OVER, BY AGE - FEMALE

AGE	HOUSEHOLD POP: (15 YEARS & OVER)	LABOUR FORCE						NOT IN LABOUR FORCE NUMBER
		TOTAL LABOUR FORCE	LABOUR FORCE PARTICI: RATE(%)	EMPLOYED		UNEMPLOYED		
				NUMBER	RATE (% TO TOTAL LABOUR FORCE)	NUMBER	RATE (% TO TOTAL LABOUR FORCE)	
ALL AGES	8,473,984	3,060,469	36.1	2,828,397	92.4	232,072	7.6	5,413,514
15 - 19 YRS	748,333	77,612	10.4	48,988	63.1	28,624	36.9	670,720
20 - 24 YRS	703,886	295,316	42.0	209,736	71.0	85,580	29.0	408,571
25 - 29 YRS	755,353	323,549	42.8	264,419	81.7	59,131	18.3	431,804
30 - 39 YRS	1,598,989	699,946	43.8	658,930	94.1	41,017	5.9	899,042
40 + YRS	4,667,423	1,664,046	35.7	1,646,325	98.9	17,720	1.1	3,003,377

These figures are to be treated with caution as the corresponding CV (Coefficient of variation)

**TABLE 3 - HISTORICAL TABLE OF CURRENTLY EMPLOYED PERSONS BY AGE GROUPS
(PERCENTAGE) - BOTH SEXES**

Year	All Ages	Age Groups				
		15 - 19 YRS	20 - 24 YRS	25 - 29 YRS	30 - 39 YRS	40+ YRS
2008 ¹	100.0	3.4	9.9	11.7	24.0	51.0
2009 ¹	100.0	3.4	8.6	11.5	24.4	52.1
2010 ¹	100.0	3.0	8.5	10.9	24.0	53.5
2011 ²	100.0	3.1	8.6	11.0	24.3	53.0
2012 ²	100.0	2.5	8.3	11.0	25.2	53.0
2013 ²	100.0	2.7	7.9	10.1	24.8	54.5
2014 ²	100.0	2.4	7.2	9.7	25.2	55.5
2015 ²	100.0	2.2	7.5	9.7	24.5	56.1
2016Q1 ²	100.0	2.1	7.0	9.1	24.4	57.4
2016Q2 ²	100.0	2.1	7.6	9.8	24.5	56.0
2016Q3 ²	100.0	2.1	7.2	9.6	23.5	57.6

**TABLE 3A - HISTORICAL TABLE OF CURRENTLY EMPLOYED PERSONS BY AGE GROUPS
(PERCENTAGE) - MALE**

Year	All Ages	Age Groups				
		15 - 19 YRS	20 - 24 YRS	25 - 29 YRS	30 - 39 YRS	40+ YRS
2008 ¹	100.0	3.6	9.7	11.9	24.1	50.7
2009 ¹	100.0	3.5	8.4	11.8	24.3	52.0
2010 ¹	100.0	3.1	8.2	11.3	24.1	53.3
2011 ²	100.0	3.2	8.7	11.3	24.3	52.5
2012 ²	100.0	2.7	8.3	11.2	25.2	52.6
2013 ²	100.0	2.9	7.8	10.2	25.0	54.1
2014 ²	100.0	2.5	7.3	9.6	25.4	55.2
2015 ²	100.0	2.3	7.3	9.7	24.4	56.2
2016Q1 ²	100.0	2.3	7.1	8.9	24.3	57.5
2016Q2 ²	100.0	2.5	7.7	9.4	24.7	55.7
2016Q3 ²	100.0	2.3	7.1	9.8	23.6	57.2

**TABLE 3B - HISTORICAL TABLE OF CURRENTLY EMPLOYED PERSONS BY AGE GROUPS
(PERCENTAGE) - FEMALE**

Year	All Ages	Age Groups				
		15 - 19 YRS	20 - 24 YRS	25 - 29 YRS	30 - 39 YRS	40+ YRS
2008 ¹	100.0	3.2	10.2	11.2	24.0	51.5
2009 ¹	100.0	3.3	8.9	11.0	24.6	52.2
2010 ¹	100.0	2.9	9.2	10.0	23.9	54.0
2011 ²	100.0	2.8	8.5	10.3	24.4	53.9
2012 ²	100.0	2.2	8.4	10.5	25.1	53.8
2013 ²	100.0	2.4	8.0	10.0	24.3	55.3
2014 ²	100.0	2.2	7.1	9.9	24.8	56.0
2015 ²	100.0	2.1	7.8	9.6	24.7	55.9
2016Q1 ²	100.0	1.8	6.8	9.5	24.6	57.3
2016Q2 ²	100.0	1.4	7.3	10.5	24.1	56.6
2016Q3 ²	100.0	1.7	7.4	9.3	23.3	58.2

¹ - Excluding Northern province

² - All the districts are included and the tables consist with reweighted estimates.

**TABLE 4 - HISTORICAL TABLE OF CURRENTLY EMPLOYED PERSONS BY LEVEL OF EDUCATION
(PERCENTAGE) - BOTH SEXES**

Year	Total	Level of education			
		Grade 5 & Below	Grades 6 - 10	GCE (O.L)/ NCGE	GCE (A.L)/ HNCE & above
2008 ¹	100.0	20.8	47.4	15.8	15.9
2009 ¹	100.0	21.1	47.2	15.5	16.2
2010 ¹	100.0	20.2	48.2	15.9	15.8
2011 ²	100.0	18.8	48.1	15.7	17.4
2012 ²	100.0	18.7	47.3	17.5	16.6
2013 ²	100.1	18.2	47.9	15.9	18.1
2014 ²	100.0	16.4	48.9	16.0	18.6
2015 ²	100.0	16.7	47.4	17.3	18.6
2016Q1 ²	100.0	17.0	46.5	16.6	19.9
2016Q2 ²	100.0	15.7	47.2	16.6	20.5
2016Q3 ²	100.0	16.3	47.8	15.7	20.1

**TABLE 4A - HISTORICAL TABLE OF CURRENTLY EMPLOYED PERSONS BY LEVEL OF EDUCATION
(PERCENTAGE) - MALE**

Year	Total	Level of education			
		Grade 5 & Below	Grades 6 - 10	GCE (O.L)/ NCGE	GCE (A.L)/ HNCE & above
2008 ¹	100.0	20.1	50.6	16.1	13.2
2009 ¹	100.0	20.3	50.7	15.7	13.3
2010 ¹	100.0	19.1	51.6	16.2	13.1
2011 ²	100.0	18.3	51.0	16.1	14.6
2012 ²	100.0	18.0	51.2	17.7	13.1
2013 ²	99.9	17.8	51.5	16.0	14.6
2014 ²	100.0	16.4	52.6	16.2	14.8
2015 ²	100.0	16.7	51.1	17.7	14.6
2016Q1 ²	100.0	17.2	50.2	16.8	15.8
2016Q2 ²	100.0	14.9	51.5	17.2	16.3
2016Q3 ²	100.0	16.7	51.2	16.0	16.1

**TABLE 4B - HISTORICAL TABLE OF CURRENTLY EMPLOYED PERSONS BY LEVEL OF EDUCATION
(PERCENTAGE) - FEMALE**

Year	Total	Level of education			
		Grade 5 & Below	Grades 6 - 10	GCE (O.L)/ NCGE	GCE (A.L)/ HNCE & above
2008 ¹	100.0	22.2	41.3	15.3	21.2
2009 ¹	100.0	22.5	40.6	15.3	21.7
2010 ¹	100.0	22.3	41.3	15.3	21.1
2011 ²	100.0	19.9	42.2	14.9	23.0
2012 ²	100.0	19.9	39.3	17.2	23.7
2013 ²	100.0	18.8	41.0	15.6	24.6
2014 ²	100.0	16.5	41.7	15.8	26.0
2015 ²	100.0	16.6	40.4	16.7	26.3
2016Q1 ²	100.0	16.7	39.9	16.3	27.1
2016Q2 ²	100.0	17.0	39.2	15.3	28.5
2016Q3 ²	100.0	15.7	41.6	15.2	27.4

¹ - Excluding Northern province

² - All the districts are included and the Tables consist with reweighted estimates.

**TABLE 5 - HISTORICAL TABLE OF CURRENTLY EMPLOYED PERSONS BY EMPLOYMENT STATUS
(PERCENTAGE) - BOTH SEXES**

YEAR	TOTAL EMPLOYED	EMPLOYEE			EMPLOYER	OWN	UNPAID
		TOTAL	PUBLIC	PRIVATE		ACCOUNT WORKER	FAMILY WORKER
2008 ¹	100.0	56.5	15.3	41.3	2.9	30.3	10.3
2009 ¹	100.0	57.7	15.5	42.2	2.6	29.2	10.4
2010 ¹	100.0	55.5	14.3	41.3	2.6	31.5	10.3
2011 ²	100.0	55.1	14.6	40.5	2.9	31.5	10.6
2012 ²	100.0	56.5	15.3	41.2	2.8	31.9	8.7
2013 ²	100.0	55.7	15.2	40.5	3.0	32.2	9.1
2014 ²	100.0	56.4	15.5	40.9	2.7	32.0	8.9
2015 ²	100.0	56.1	15.1	41.0	3.1	32.3	8.4
2016Q1 ²	100.0	56.6	14.7	41.9	2.9	32.5	7.9
2016Q2 ²	100.0	57.7	15.1	42.6	2.9	31.6	7.8
2016Q3 ²	100.0	59.3	14.5	44.8	2.3	30.5	7.8

**TABLE 5A - HISTORICAL TABLE OF CURRENTLY EMPLOYED PERSONS BY EMPLOYMENT STATUS
(PERCENTAGE) - MALE**

YEAR	TOTAL EMPLOYED	EMPLOYEE			EMPLOYER	OWN	UNPAID
		TOTAL	PUBLIC	PRIVATE		ACCOUNT WORKER	FAMILY WORKER
2008 ¹	100.0	57.6	13.7	43.9	4.1	34.2	4.1
2009 ¹	100.0	59.2	13.7	45.5	3.6	33.0	4.3
2010 ¹	100.0	56.2	12.8	43.4	3.5	36.0	4.3
2011 ²	100.0	56.0	12.8	43.1	3.8	35.9	4.3
2012 ²	100.0	56.7	12.9	43.8	3.8	35.9	3.6
2013 ²	100.0	56.6	12.9	43.8	4.1	36.2	3.0
2014 ²	100.0	57.3	13.1	44.2	3.6	36.2	2.8
2015 ²	100.0	56.7	12.8	43.9	4.2	36.3	2.8
2016Q1 ²	100.0	57.6	12.6	45.0	4.0	35.7	2.7
2016Q2 ²	100.0	58.4	12.5	45.9	4.0	34.7	2.8
2016Q3 ²	100.0	60.3	12.9	47.4	3.2	33.8	2.7

**TABLE 5B - HISTORICAL TABLE OF CURRENTLY EMPLOYED PERSONS BY EMPLOYMENT STATUS
(PERCENTAGE) - FEMALE**

YEAR	TOTAL EMPLOYED	EMPLOYEE			EMPLOYER	OWN	UNPAID
		TOTAL	PUBLIC	PRIVATE		ACCOUNT WORKER	FAMILY WORKER
2008 ¹	100.0	54.4	18.2	36.2	0.7	22.8	22.1
2009 ¹	100.0	55.0	19.0	36.0	0.9	22.1	22.0
2010 ¹	100.0	54.3	17.3	37.0	0.8	22.6	22.3
2011 ²	100.0	53.3	18.1	35.2	0.9	22.7	23.1
2012 ²	100.0	56.1	20.2	35.9	0.9	23.7	19.3
2013 ²	100.0	53.9	19.7	34.3	0.9	24.6	20.5
2014 ²	100.0	54.8	20.1	34.7	1.0	23.7	20.5
2015 ²	100.0	55.1	19.3	35.8	1.1	24.9	18.8
2016Q1 ²	100.0	55.0	18.5	36.5	1.0	26.9	17.2
2016Q2 ²	100.0	56.3	19.9	36.4	0.8	25.7	17.1
2016Q3 ²	100.0	57.6	17.5	40.1	0.7	24.5	17.2

■ These figures are to be treated with caution as the corresponding CV (Coefficient of variation)

¹ - Excluding Northern province

² - All the districts are included and the Tables consist with reweighted estimates.

Table 6 - Currently Employed person by Industry group (Based on ISIC Fourth Revision) - both sexes

Year	Total	Industry Group																
		1	2	3	6	7	8	9	10	11	13	14	15	16	17	19	20	Other
2013	7,681,279	2,321,215	91,045	1,366,162	539,523	1,046,386	467,835	171,236	55,409	137,344	60,917	95,873	570,351	301,768	128,034	121,161	162,013	45,007
2014	7,700,489	2,222,859	74,643	1,389,250	563,532	1,012,447	481,331	181,246	63,038	145,871	47,356	101,247	594,300	313,926	126,950	131,274	195,125	56,094
2015	7,830,976	2,244,547	60,614	1,407,908	549,649	1,059,803	480,338	202,780	52,372	144,507	64,950	120,218	600,249	324,175	137,366	143,768	177,255	60,477
2016Q1	7,968,931	2,274,722	68,323	1,424,370	575,760	1,046,908	513,312	205,486	45,887	169,701	66,659	113,317	633,206	340,086	137,035	109,597	199,124	45,438
2016Q2	7,815,280	1,961,818	58,623	1,449,685	613,058	1,137,606	539,682	185,172	74,032	165,611	52,093	97,125	607,851	324,795	136,272	151,710	207,323	52,825
2016Q3	7,999,821	2,168,982	70,164	1,439,792	634,851	1,105,492	484,916	207,699	72,891	157,117	46,260	97,390	581,073	357,699	150,840	136,649	233,289	54,719

Note: These Industry groups are based on ISIC - Rev. 4

1 Agriculture, forestry and fishing (A)

2 Mining & quarrying (B)

3 Manufacturing (C)

6 Construction, Electricity, gas, steam and air conditioning supply, Water supply, sewerage, waste management and remediation activities (D, E,F)

7 Wholesale and retail trade, repair of motor vehicles and motor cycles(G)

8 Transportation and storage (H)

9 Accommodation and food services activities (I)

10 Information and communication (J)

11 Financial and insurance activities (K)

13 Professional, scientific and technical activities (M)

14 Administrative and support service activities (N)

15 Public administration and defence compulsory social security (O)

16 Education (P)

17 Human health and social work activities (Q)

19 Other service activities (S)

20 Activities of households as employers; undifferentiated goods and services - producing activities of households for own use (T)

Other

Other

12 Real estate activities (L)

18 Arts, entertainment and recreation (R)

21 Activities of extra territorial organizations & bodies (U)

Table 6A - Currently Employed person by Industry group (Based on ISIC Fourth Revision) - Male

Year	Total	Industry Group																
		1	2	3	6	7	8	9	10	11	13	14	15	16	17	19	20	Other
2013	5,024,340	1,423,393	80,653	722,816	524,027	744,407	446,960	123,218	42,128	80,102	37,716	70,383	371,194	90,634	49,153	85,164	95,909	36,483
2014	5,075,425	1,375,427	69,796	734,033	540,150	723,692	467,394	124,655	47,897	82,803	31,456	81,190	384,657	96,971	55,148	102,024	115,389	42,743
2015	5,097,797	1,360,831	57,116	741,643	527,419	756,298	465,920	140,042	41,206	79,485	42,853	91,639	395,291	92,824	45,976	105,307	107,469	46,478
2016Q1	5,102,435	1,362,990	64,590	737,848	552,591	727,072	496,639	120,965	34,952	96,127	36,097	82,587	402,339	102,231	51,188	80,753	123,184	30,280
2016Q2	5,100,734	1,208,473	55,040	768,626	587,955	786,785	514,224	123,298	55,703	99,568	33,020	76,099	381,100	99,201	50,816	111,426	106,105	43,295
2016Q3	5,171,424	1,311,167	64,899	718,507	606,889	777,686	464,307	135,856	49,787	84,676	31,961	84,571	395,051	119,881	58,085	93,991	135,367	38,744

Table 6B - Currently Employed person by Industry group (Based on ISIC Fourth Revision) - Female

Year	Total	Industry Group																
		1	2	3	6	7	8	9	10	11	13	14	15	16	17	19	20	Other
2013	2,656,938	897,822	10,392	643,346	15,495	301,979	20,875	48,018	13,281	57,242	23,201	25,490	199,157	211,134	78,881	35,997	66,104	8,524
2014	2,625,065	847,432	*	655,218	23,382	288,755	13,937	56,591	15,141	63,069	15,900	20,057	209,643	216,955	71,802	29,250	79,735	13,351
2015	2,733,179	883,716	*	666,265	22,230	303,507	14,418	62,738	11,165	65,023	22,097	28,579	204,958	231,350	91,389	38,461	69,786	13,999
2016Q1	2,866,496	911,732	3,733	686,523	23,169	319,836	16,673	84,520	10,935	73,574	30,562	30,729	230,866	237,854	85,846	28,844	75,940	15,158
2016Q2	2,714,545	753,344	3,582	681,059	25,103	350,821	25,458	61,874	18,329	66,043	19,073	21,026	226,751	225,594	85,456	40,284	101,218	9,530
2016Q3	2,828,397	857,815	5,265	721,286	27,963	327,805	20,609	71,843	23,104	72,441	14,299	12,819	186,022	237,817	92,755	42,658	97,922	15,975

Note: These Industry groups are based on ISIC - Rev. 4

*|Cell count is not enough to give reliable estimates.

1 Agriculture, forestry and fishing (A)

2 Mining & quarrying (B)

3 Manufacturing (C)

6 Construction, Electricity, gas, steam and air conditioning supply, Water supply, sewerage, waste management and remediation activities (D, E,F)

7 Wholesale and retail trade, repair of motor vehicles and motor cycles(G)

8 Transportation and storage (H)

9 Accommodation and food services activities (I)

10 Information and communication (J)

11 Financial and insurance activities (K)

13 Professional, scientific and technical activities (M)

14 Administrative and support service activities (N)

15 Public administration and defence compulsory social security (O)

16 Education (P)

17 Human health and social work activities (Q)

19 Other service activities (S)

20 Activities of households as employers; undifferentiated goods and services - producing activities of households for own use (T)

Other

Other

12 Real estate activities (L)

18 Arts, entertainment and recreation (R)

21 Activities of extra territorial organizations & bodies (U)

Table 6C: Historical table of currently employed population by major industry group - Both sexes

Major Industry Group	Year					
	2013	2014	2015	2016Q1	2016Q2	2016Q3
Total	7,681,279	7,700,490	7,830,976	7,968,931	7,815,280	7,999,821
Agriculture	2,321,215	2,222,859	2,244,547	2,274,722	1,961,818	2,168,982
Industry	1,996,730	2,027,426	2,018,171	2,068,453	2,121,365	2,144,808
Services	3,363,334	3,450,205	3,568,258	3,625,756	3,732,097	3,686,032

Table 6D: Historical table of currently employed population by major industry group (percentage) - Both sexes

Major Industry Group	Year					
	2013	2014	2015	2016Q1	2016Q2	2016Q3
Total	100.0	100.0	100.0	100.0	100.0	100.0
Agriculture	30.2	28.9	28.7	28.5	25.1	27.1
Industry	26.0	26.3	25.8	26.0	27.1	26.8
Services	43.8	44.8	45.6	45.5	47.8	46.1

Note: These Industry groups are based on ISIC - Rev. 4

Agriculture

1. Agriculture Forestry and Fishery (A)

Industries

1. Mining & Quarrying (B)
2. Manufacturing (C)
3. Construction, Electricity, gas, steam and air conditioning supply, Water supply, sewerage, waste management and remediation activities (D, E,F)

Services

1. Wholesale and retail trade, repair of motor vehicles and motor cycles(G)
2. Transportation and storage (H)
3. Accommodation and food services activities (I)
4. Information and communication (J)
5. Financial and insurance activities (K)
6. Professional, scientific and technical activities (M)
7. Administrative and support service activities (N)
8. Public administration and defence compulsory social security (O)
9. Education (P)
10. Human health and social work activities (Q)
11. Other service activities (S)
12. Activities of households as employers; undifferentiated goods and services - producing activities of households for own use (T)
13. Real estate activities (L) Arts, entertainment and recreation (R) Activities of extra territorial organizations & bodies (U)

Table 7 - Currently Employed person by Occupation group (Based on ISCO 08) - Both sexes

Year	Total	Occupation group									
		1	2	3	4	5	6	7	8	9	10
2013	7,681,279	365,049	483,587	447,965	281,095	847,409	1,490,219	1,302,496	640,410	1,773,456	49,593
2014	7,700,489	353,465	491,521	450,247	327,479	902,710	1,562,251	1,312,975	635,899	1,633,672	30,270
2015	7,830,976	480,097	511,230	470,645	311,455	852,722	1,457,350	1,266,101	673,380	1,766,704	41,292
2016Q1	7,968,931	456,835	539,183	489,783	322,607	822,671	1,531,824	1,271,674	701,583	1,785,315	47,457
2016Q2	7,815,280	512,787	503,624	495,571	304,297	923,804	1,313,501	1,277,211	719,792	1,716,425	48,267
2016Q3	7,999,821	460,654	528,284	440,539	342,107	902,700	1,400,432	1,289,440	704,489	1,897,097	34,079
1	Managers, Senior Officials and Legislators				6	Skilled Agricultura, Forestry and Fishery workers					
2	Professionals				7	Craft and Related Trades workers					
3	Technicians and Associate Professionals				8	Plant and Machine operators and Assemblers					
4	Clerks and Clerical support workers				9	Elementary occupations					
5	Services and Sales workers				10	Armed Forces Occupations & unidentified occupations					

Table 7A - Currently Employed person by Occupation group (Based on ISCO 08) - Male

Year	Total	Occupation group									
		1	2	3	4	5	6	7	8	9	10
2013	5,024,340	258,974	184,962	288,509	138,934	587,580	980,699	884,473	556,576	1,099,578	44,055
2014	5,075,424	265,819	175,533	301,206	157,091	630,281	1,017,807	881,891	559,814	1,056,416	29,566
2015	5,097,798	355,643	174,644	318,745	150,246	585,455	965,084	833,470	577,038	1,101,377	36,096
2016Q1	5,102,435	321,459	194,428	325,150	154,288	535,803	1,005,293	813,250	615,544	1,097,039	40,181
2016Q2	5,100,734	375,495	183,060	320,564	138,971	625,456	851,809	841,186	619,600	1,104,419	40,175
2016Q3	5,171,424	338,285	197,115	258,984	171,254	628,945	908,702	827,704	595,631	1,217,087	27,718

Table 7B - Currently Employed person by Occupation group (Based on ISCO 08) - Female

Year	Total	Occupation group									
		1	2	3	4	5	6	7	8	9	10
2013	2,656,937	106,075	298,625	159,456	142,161	259,829	509,519	418,023	83,834	673,878	5,537
2014	2,625,065	87,646	315,988	149,041	170,388	272,429	544,444	431,084	76,085	577,256	..
2015	2,733,178	124,454	336,586	151,900	161,209	267,267	492,267	432,631	96,342	665,326	5,196
2016Q1	2,866,496	135,376	344,755	164,633	168,319	286,867	526,532	458,424	86,039	688,276	7,276
2016Q2	2,714,545	137,292	320,564	175,008	165,326	298,348	461,692	436,025	100,192	612,006	8,092
2016Q3	2,828,397	122,369	331,169	181,555	170,853	273,755	491,730	461,736	108,858	680,010	6,361

These figures are to be treated with caution as the corresponding CV (Coefficient of variation) values are high. .. Negligible

- | | | | |
|---|--|----|---|
| 1 | Managers, Senior Officials and Legislators | 6 | Skilled Agricultura, Forestry and Fishery workers |
| 2 | Professionals | 7 | Craft and Related Trades workers |
| 3 | Technicians and Associate Professionals | 8 | Plant and Machine operators and Assemblers |
| 4 | Clerks and Clerical support workers | 9 | Elementary occupations |
| 5 | Services and Sales workers | 10 | Armed Forces Occupations & unidentified occupations |

TABLE 8 - CURRENTLY EMPLOYED PERSONS BY HOURS PER WEEK ACTUALLY WORKED AT THE MAIN JOB AND MAJOR INDUSTRIAL GROUP (PERCENTAGE) - BOTH SEXES

MAJOR INDUSTRIAL GROUP	TOTAL	0 *	1 - 9	10 - 19	20 - 29	30 - 39	40 - 49	50 & OVER
Total	100.0	4.3	1.7	3.8	7.9	14.3	37.7	30.3
1	100.0	7.2	4.0	8.2	14.7	20.5	31.2	14.3
2	100.0	4.5	1.0	1.7	2.6	15.8	37.0	37.3
3	100.0	3.2	1.3	2.9	7.7	11.6	40.0	33.3
6	100.0	4.0	0.5	2.0	4.3	13.2	49.5	26.5
7	100.0	1.9	0.6	2.1	3.8	9.5	30.9	51.1
8	100.0	2.5	0.2	1.5	2.5	9.3	31.6	52.5
9	100.0	2.6	0.8	0.9	6.0	9.5	29.6	50.6
10	100.0	1.9	1.3	1.4	5.6	1.2	60.0	28.7
11	100.0	..	0.6	..	2.6	0.6	65.3	30.9
13	100.0	2.2	2.1	7.0	60.5	28.2
14	100.0	3.7	0.0	2.1	5.7	7.9	38.5	42.1
15	100.0	2.2	0.2	0.2	2.0	5.1	60.8	29.4
16	100.0	12.7	2.2	3.3	10.1	42.7	24.4	4.7
17	100.0	1.6	..	2.8	1.7	11.5	46.3	36.1
19	100.0	4.4	1.4	3.5	5.7	13.2	32.4	39.5
20	100.0	1.8	0.9	6.4	10.3	13.9	34.6	32.1
Other	100.0	1.8	..	1.6	11.1	9.0	44.7	31.8

* Has a job but not at work during the reference week

These figures are to be treated with caution as the corresponding CV (Coefficient of variation) values are high.

Industry group

1 Agriculture, forestry and fishing (A)

2 Mining & quarrying (B)

3 Manufacturing (C)

6 Construction, Electricity, gas, steam and air conditioning supply, Water supply, sewerage, waste management and remediation activities (D, E,F)

7 Wholesale and retail trade, repair of motor vehicles and motor cycles(G)

8 Transportation and storage (H)

9 Accommodation and food services activities (I)

10 Information and communication (J)

11 Financial and insurance activities (K)

13 Professional, scientific and technical activities (M)

14 Administrative and support service activities (N)

15 Public administration and defence compulsory social security (O)

16 Education (P)

17 Human health and social work activities (Q)

19 Other service activities (S)

20 Activities of households as employers; undifferentiated goods and services - producing activities of households for own use (T)

Other

Other

12 Real estate activities (L)

18 Arts, entertainment and recreation (R)

21 Activities of extra territorial organizations & bodies (U)

**TABLE 9 - HISTORICAL TABLE OF CURRENTLY UNEMPLOYED PERSONS BY AGE GROUPS
(PERCENTAGE) - BOTH SEXES**

YEAR	TOTAL	AGE GROUPS				
		15 - 19 YRS	20 - 24 YRS	25 - 29 YRS	30 - 39 YRS	40 + YRS
2008 ¹	100.0	15.8	38.4	21.5	13.6	10.6
2009 ¹	100.0	14.5	37.5	21.3	15.1	11.6
2010 ¹	100.0	14.8	38.7	21.2	14.7	10.6
2011 ²	100.0	12.7	42.2	20.7	15.9	8.5
2012 ²	100.0	14.1	40.5	18.8	15.8	10.8
2013 ²	100.0	13.7	41.0	18.1	15.1	12.1
2014 ²	100.0	14.2	39.8	19.3	15.4	11.3
2015 ²	100.0	14.5	37.4	20.5	15.8	11.8
2016Q1 ²	100.0	17.6	39.1	21.5	12.8	9.0
2016Q2 ²	100.0	14.9	42.3	18.2	13.4	11.2
2016Q3 ²	100.0	16.7	37.7	21.9	14.2	9.4

**TABLE 9A - HISTORICAL TABLE OF CURRENTLY UNEMPLOYED PERSONS BY AGE GROUPS
(PERCENTAGE) - MALE**

YEAR	TOTAL	AGE GROUPS				
		15 - 19 YRS	20 - 24 YRS	25 - 29 YRS	30 - 39 YRS	40+ YRS
2008 ¹	100.0	19.4	37.8	19.5	9.4	13.9
2009 ¹	100.0	17.9	36.4	18.9	12.4	14.4
2010 ¹	100.0	19.6	41.2	15.5	11.7	12.0
2011 ²	100.0	17.6	44.7	17.1	13.1	7.6
2012 ²	100.0	19.6	41.6	17.0	12.3	9.4
2013 ²	100.0	16.9	44.0	15.5	11.5	12.1
2014 ²	100.0	20.1	37.6	18.3	11.7	12.3
2015 ²	100.0	21.7	39.9	14.6	12.6	11.2
2016Q1 ²	100.0	24.7	44.6	19.6	5.9	5.2
2016Q2 ²	100.0	23.8	44.4	11.9	7.1	12.8
2016Q3 ²	100.0	23.8	39.1	16.2	8.7	12.3

**TABLE 9B - HISTORICAL TABLE OF CURRENTLY UNEMPLOYED PERSONS BY AGE GROUPS
(PERCENTAGE) - FEMALE**

YEAR	TOTAL	AGE GROUPS				
		15 - 19 YRS	20 - 24 YRS	25 - 29 YRS	30 - 39 YRS	40+ YRS
2008 ¹	100.0	12.9	38.9	23.2	17.0	8.0
2009 ¹	100.0	11.5	38.5	23.5	17.5	9.0
2010 ¹	100.0	10.7	36.5	26.1	17.4	9.3
2011 ²	100.0	9.1	40.4	23.4	17.9	9.2
2012 ²	100.0	9.2	39.6	20.4	18.9	12.0
2013 ²	100.0	11.0	38.4	20.3	18.2	12.1
2014 ²	100.0	8.9	41.7	20.2	18.7	10.4
2015 ²	100.0	9.4	35.6	24.6	18.1	12.2
2016Q1 ²	100.0	11.5	34.3	23.1	18.8	12.3
2016Q2 ²	100.0	8.0	40.8	23.1	18.2	10.0
2016Q3 ²	100.0	12.3	36.9	25.5	17.7	7.6

These figures are to be treated with caution as the corresponding CV (Coefficient of variation)

¹ - Excluding Northern province

² - All the districts are included and the Tables consist with reweighted estimates.

TABLE 10 - HISTORICAL TABLE OF CURRENTLY UNEMPLOYED PERSONS BY LEVEL OF EDUCATION (PERCENTAGE) - BOTH SEXES

YEAR	TOTAL	LEVEL OF EDUCATION			
		GRADE 5 & BELOW	GRADES 6 - 10	GCE(O/L) NCGE	GCE(A/L) HNCE & ABOVE
2008 ¹	100.0	4.5	39.3	23.4	32.8
2009 ¹	100.0	4.3	39.9	23.1	32.7
2010 ¹	100.0	2.7	34.9	22.7	39.7
2011 ²	100.0	2.9	38.1	19.8	39.2
2012 ²	100.0	2.6	37.4	27.2	32.9
2013 ²	100.0	3.9	36.5	22.1	37.5
2014 ²	100.0	3.1	37.7	22.4	36.8
2015 ²	100.0	2.5	34.4	24.4	38.7
2016Q1 ²	100.0	3.8	36.6	21.9	37.8
2016Q2 ²	100.0	2.5	35.2	22.5	39.8
2016Q3 ²	100.0	2.6	33.0	20.8	43.7

TABLE 10A - HISTORICAL TABLE OF CURRENTLY UNEMPLOYED PERSONS BY LEVEL OF EDUCATION (PERCENTAGE) - MALE

YEAR	TOTAL	LEVEL OF EDUCATION			
		GRADE 5 & BELOW	GRADES 6 - 10	GCE(O/L) NCGE	GCE(A/L) HNCE & ABOVE
2008 ¹	100.0	5.3	49.7	23.1	21.9
2009 ¹	100.0	4.4	48.0	25.3	22.3
2010 ¹	100.0	3.4	40.4	25.4	30.9
2011 ²	100.0	2.0	47.8	20.3	29.9
2012 ²	100.0	2.0	46.7	29.6	21.7
2013 ²	100.0	4.7	43.7	24.3	27.4
2014 ²	100.0	3.1	48.1	22.7	26.0
2015 ²	100.0	1.7	44.1	30.9	23.4
2016Q1 ²	100.0	1.0	43.7	24.1	31.3
2016Q2 ²	100.0	0.9	53.0	21.9	24.1
2016Q3 ²	100.0	1.9	45.2	25.5	27.4

TABLE 10B - HISTORICAL TABLE OF CURRENTLY UNEMPLOYED PERSONS BY LEVEL OF EDUCATION (PERCENTAGE) - FEMALE

YEAR	TOTAL	LEVEL OF EDUCATION			
		GRADE 5 & BELOW	GRADES 6 - 10	GCE(O/L) NCGE	GCE(A/L) HNCE & ABOVE
2008 ¹	100.0	3.8	30.9	23.7	41.7
2009 ¹	100.0	4.3	32.5	21.1	42.1
2010 ¹	100.0	2.1	30.1	20.5	47.3
2011 ²	100.0	3.5	30.9	19.4	46.1
2012 ²	100.0	3.0	29.0	25.0	43.0
2013 ²	100.0	3.2	30.2	20.3	46.2
2014 ²	100.0	3.1	28.5	22.1	46.4
2015 ²	100.0	3.0	27.7	19.9	49.4
2016Q1 ²	100.0	6.1	30.5	20.0	43.4
2016Q2 ²	100.0	3.8	21.5	23.0	51.8
2016Q3 ²	100.0	3.0	25.4	17.8	53.8

These figures are to be treated with caution as the corresponding CV (Coefficient of variation) values are high.

¹ - Excluding Northern province

² - All the districts are included and the Tables consist with reweighted estimates.

TABLE 11 - CURRENTLY UNEMPLOYED PERSONS BY SEX AND DURATION OF UNEMPLOYMENT

(2016 3rd Quarter)

Sex	Total	Duration		
		Less than 6 months	6 to less than 12 months	12+ months
Both sexes	376,180	145,219	89,497	141,464
%	100.0	38.6	23.8	37.6
Male	144,108	70,282	32,447	41,379
%	100.0	48.8	22.5	28.7
Female	232,072	74,938	57,050	100,085
%	100.0	32.3	24.6	43.1

Special Statistical Appendix

EXPLANATORY NOTES

Coverage

Sri Lanka Labour Force Survey was designed to measure the levels and trends of employment, unemployment and labour force in Sri Lanka. This survey is being conducted quarterly, since the first quarter of 1990.

This quarterly survey of households is conducted through a scientifically selected sample designed to represent the civilian non-institutional population. Respondents are interviewed to obtain information about the employment status etc. of each member of the household 15 years of age and older.

The field work of the survey is done during the third week of each month, Monday through Sunday. This is known as the "survey week". The inquiry relates to activity or status are referred in the preceding week of the survey week; referred to as the "reference week".

The concepts and definitions underlying labour force data are as follows.

Concepts & Definitions

1. **Labour force:** The labour force is composed of the economically active population 15 years of age and over.
2. **The Economically Active Population:** is defined as those persons who are/were employed or unemployed during the reference period of the survey.
3. **Employed:** Persons, who during the reference period, worked as paid employees, employers, own account workers (self employed), or unpaid family workers are said to be employed. This includes persons with a job but not at work during the reference period.
4. **Unemployed:** Persons who are seeking and available for work, but had no employment during the reference period.
5. **Currently Economically Active:** A person who was employed or unemployed during the current reference period is considered to be currently economically active.
6. **Not in the Labour Force (not economically active):** Persons who were neither working nor available/looking for work are classified as "not in the labour force". Persons are not in the labour force for such reasons as: full time care of the household, full – time students, retired or old age, infirmed or disabled, or are not interested in working for one reason or another. Current and Usual definitions apply.
7. **Criteria for classification of underemployment:** In order to classify an employed persons as visibly underemployed,

(i) If the person has worked less than the normal duration in his/her main activity

In Sri Lanka scenario, 35 hours per week is taken as the cut-off point applicable to all workers, except government teachers. As in practice, though teachers do have a normal duration of work which is below the general cut-off point, they should be on a full time schedule according to the nature of their job. Further, those who do have a secondary job or those who are employers, were considered as having worked the normal duration in their respective activity.

Therefore, if the person has worked less than the normal duration in his/her activity (as described above), then the person is further questioned to ascertain whether he/She is prepared and available for further work if provided. Such persons are considered underemployed in their respective employment.

(ii) If the person has worked more than the normal duration in his/her activity

If the person has worked even more than 35 hours as usually, but he has worked less than 35 hours actually in the reference period, only due to the off season or bad weather, such persons were also further questioned to check their underemployment situation, considering them as a special category.

8. Informal Sector Employment

In order to classify a person to be employed in informal sector employment, following information were used.

- (i) Registration of the organization
- (ii) Accounts keeping practices of the organization
- (iii) Total number of regular employees of the organization.

Reliability of the estimates

Statistics based on the quarterly labour force data are subject to both sampling and non - sampling errors. When a sample rather than the entire population is surveyed, there is a chance that the sample estimates may differ from the "true" population values they represent.

The exact differences or sampling error, varies depending on the particular sample selected, and this variability is measured by the standard error of the estimate. There is about a 95 percent chance, or level of confidence, that an estimate based on a sample will differ by no more than 1.96 standard errors from the " true" population value, because of sampling error. Analyses relating to the Labour Force Survey are generally conducted at the 95 percent level of confidence.

For example, the confidence interval for the quarterly unemployment rate is on the order of

Estimated value (of the unemployment rate) \pm (standard error) * (1.96)

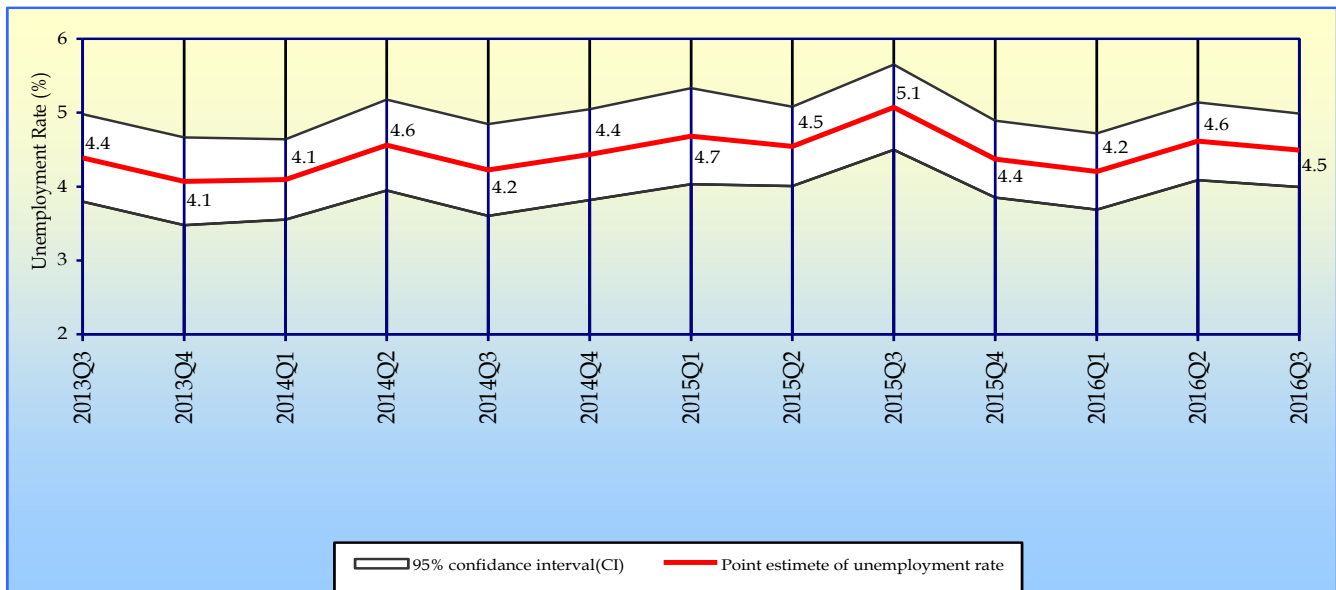
4.5 \pm (0.275) * (1.96)

(4.5 \pm 0.539)

This means, the 95 percent confidence interval on the quarterly unemployment rate could range from (5.6 to 7.2). This implies that there is about 95 percent chance that the "true" unemployment rate lies within this interval. This range includes all the values range from 5.6 to 7.2. When the comparison of this estimate is done between two quarters, if any of the value within the 95 percent confidence interval of one quarter overlaps with the confidence interval of the other , it means that the estimates of this two quarters are not significantly different.

Therefore, in each quarterly labour force report, a separate table is given including approximate standard errors for some selected variables, so that users could understand this statistical scenario clearly.

Distribution of unemployment rates and 95% confidence intervals (2013Q3 - 2016Q3)



Note:

As seen in figure 2, it is very important to note that, there were no statistically significant differences between the unemployment rates reported in different time periods of 2013/2016, when sampling error was considered.

Change in survey schedule

Current survey concepts and methods are very similar to those introduced at the beginning of the survey in 1990. However, some changes have been made over the years to improve the accuracy and usefulness of the data. In January 2006, some improvements were made to the labour force survey schedule in order to fulfill the requirements of data users and also to provide additional information for planning purposes. The revision was made focusing on literacy, household economic activities, and informal sector employment and under employment etc.

From January , 2013 onwards, the lower bound of working age populations is considered as age 15, hence age 15 and over population is considered as working age population. The survey schedule is updated to obtain more precise information on following age, informal employment, informal sector, secondary occupation, wages & income , unemployment & trainings.

New Industry & Occupation classifications

From January 2013 onward the survey uses new industry & occupation classifications, such as

SLIC Rev 4:- Sri Lanka Standard Industry Classification based on International Standard Industry classification - Rev.4 (ISIC Rev 4)

SLSCO 08:- Sri Lanka Standard Classification of Occupation -2008 based on International Standard Classification of Occupation-2008 (ISCO 2008)

Note :

It is important to note that, all the data published here are the estimates based on a sample survey and these are subject to sampling errors. These sampling errors can be statistically evaluated from the survey results. Therefore, sampling error is normally measured in terms of the standard error of the particular variable. Standard error could be used to calculate the confidence limits with a prescribed accuracy where the true value of the estimates lies.

Further reliability of the estimates can be expressed in terms of Coefficient of Variation (CV). The CV is a relative measure of the sampling error and is calculated as sampling error divided by the expected value of the given characteristic.

In view of this, following table is given to show the estimates for some selected variables, it's standard error, CV and 95% Confidence interval.

It is also important to note that all the estimates we publish in this report are subject to sampling error and one should be cautious in the interpretation of results, especially with respect to the trends over time.

Estimate of Confidence Intervals for some selected characteristics

Year	Labour Force					Employed				
	No.	Standard error	C.V (%)	95% C.I.		No.	Standard error	C.V (%)	95% C.I.	
				Lower	Upper				Lower	Upper
2008 ¹	8,061,725	109,709	1.36	7,846,618	8,276,832	7,628,683	104,306	1.37	7,424,169	7,833,196
2009 ¹	8,051,089	107,213	1.33	7,840,876	8,261,302	7,579,835	102,161	1.35	7,379,527	7,780,143
2010 ¹	8,096,477	110,375	1.36	7,880,065	8,312,889	7,696,142	105,457	1.37	7,489,372	7,902,913
2011 ²	7,926,445	72,730	0.92	7,783,791	8,069,099	7,591,591	69,573	0.92	7,455,129	7,728,053
2012 ²	7,798,407	66,291	0.85	7,668,392	7,928,422	7,488,704	63,894	0.85	7,363,389	7,614,018
2013 ²	8,033,804	55,985	0.70	7,924,021	8,143,587	7,681,279	54,298	0.71	7,574,802	7,787,755
2014 ²	8,048,884	60,868	0.76	7,929,525	8,168,243	7,700,489	58,417	0.76	7,585,937	7,815,042
2015 ²	8,214,473	52,021	0.63	8,112,463	8,316,483	7,830,976	50,426	0.64	7,732,093	7,929,860
2016Q1 ²	8,318,617	152,067	1.83	8,019,950	8,617,284	7,968,931	147,803	1.85	7,678,638	8,259,223
2016Q2 ²	8,193,266	118,321	1.44	7,960,876	8,425,657	7,815,280	115,422	1.48	7,588,583	8,041,976
2016Q3 ²	8,376,002	93,505	1.12	8,192,356	8,559,647	7,999,821	91,820	1.15	7,819,486	8,180,157

Year	Unemployed					Unemployment Rate				
	No.	Standard error	C.V (%)	95% C.I.		Rate	Standard error	C.V (%)	95% C.I.	
				Lower	Upper				Lower	Upper
2008 ¹	433,042	14,975	3.46	403,680	462,405	5.4	0.2	3.14	5.0	5.7
2009 ¹	471,254	15,683	3.33	440,503	502,004	5.9	0.2	3.07	5.5	6.2
2010 ¹	400,335	14,742	3.68	371,430	429,240	4.9	0.2	3.39	4.6	5.3
2011 ²	334,854	15,691	4.69	304,078	365,631	4.2	0.2	4.49	3.9	4.6
2012 ²	309,703	13,287	4.29	283,643	335,763	4.0	0.2	4.14	3.6	4.3
2013 ²	352,526	12,030	3.41	328,935	376,116	4.4	0.1	3.31	4.1	4.7
2014 ²	348,395	12,697	3.64	323,497	373,293	4.3	0.2	3.50	4.0	4.6
2015 ²	383,496	12,283	3.20	359,410	407,583	4.7	0.1	3.11	4.4	5.0
2016Q1 ²	349,686	22,599	6.46	305,300	394,073	4.4	0.3	6.52	3.8	4.9
2016Q2 ²	377,987	22,492	5.95	333,811	422,163	4.6	0.3	5.80	4.1	5.1
2016Q3 ²	376,180	21,704	5.77	333,554	418,806	4.5	0.3	5.66	4.0	5.0

¹ - Excluding Northern provinces

² - All the districts are included and the Tables consist with reweighted estimates

ALTERNATIVE ESTIMATES

Alternative Estimates of Employment, Unemployment and Labour Force Characteristics

Official employment, unemployment and labour force characteristics are estimated at the Sri Lanka Labour Force Survey, based on the internationally comparable concepts and definitions recommended by the ILO. However the validity of the concepts and definitions used at the survey is questioned very often in some forums, for the appropriateness of these concepts and definitions in the Sri Lankan context.

The concepts and definitions, which were found to be controversial, are as below.

- (1) **Number of Hours of Work** : A person who work **at least one hour** during the reference week, is considered **employed**, under these definitions.
- (2) **Working Age Population** : All persons of **age 10 years and over** are considered to be in the working age, before 2013. However, this was changed as age 15 and over from 2013 onward.
- (3) **Employment Status** : All,
 - a) Paid employees, (those who work for wages/salaries).
 - b) Employers (who have at least one paid employee under them).
 - c) Own account workers (who carry out the economic activity without having anypaid employees).
 - d) Contributing family workers (who make their contribution to the economic activities carried out by their own household, without wages/salaries).

The validity of the above concepts and definitions is raised due to the following reasons.

- (1) **Number of Hours of Work** : Some pointed out that one hour per week is too low, to consider a person to be employed.
- (2) **Working Age Population** : Some pointed out those persons in the age group 10-14 yrs. are too young to be considered in the working age. (From 2013 onward the working age population is considered as age 15 and over).
- (3) **Employment Status** : Some pointed out that 'contributing family workers' may work in the family enterprise without payment because they have no other work, and so it is not appropriate to consider them as employed.

An attempt has been made to produce '**Alternative estimates of Employment, Unemployment and Labour Force Characteristics,**' by revising the original concepts and definitions so that the above issues are addressed as explained below.

The revisions made are,

- (1) **Number of Hours of Work** : Persons who work **20 hours or more per week only** are considered to be employed.
- (2) **Contributing Family Worker** : Contributing family workers are **not** considered as employed. Those contributing family workers who were reported to be seeking some other work are considered as **unemployed** and the rest of the unpaid family workers are considered as **economically inactive** (not in the labour force) so only, **a) paid employees b) employers and c) own account workers are considered to be employed.**

Following tables are based on the above alternative concepts and definitions.

Alternative Estimates of Employment, Unemployment and Labour Force Characteristics

TABLE 1 - LABOUR FORCE STATUS OF HOUSEHOLD POPULATION 15 YEARS & OVER (ALTERNATIVE ESTIMATES)

YEAR	HOUSEHOLD POPULATION (15 YEARS & OVER)	TOTAL LABOUR FORCE	LABOUR FORCE PARTICI: RATE(%)	LABOUR FORCE				NOT IN LABOUR FORCE NUMBER
				EMPLOYED		UNEMPLOYED		
				NUMBER	RATE (% TO TOTAL LABOUR FORCE)	NUMBER	RATE (% TO TOTAL LABOUR FORCE)	
2008 ¹	14,626,581	6,859,040	46.9	6,425,997	93.7	433,042	6.3	7,767,541
2009 ¹	14,876,264	6,836,598	46.0	6,365,344	93.1	471,254	6.9	8,039,665
2010 ¹	15,166,285	6,892,444	45.4	6,492,109	94.2	400,335	5.8	8,273,841
2011 ²	14,975,989	6,687,771	44.7	6,352,916	95.0	334,854	5.0	8,288,219
2012 ²	14,857,578	6,846,805	46.1	6,537,101	95.5	309,703	4.5	8,010,773
2013 ²	14,958,239	6,966,035	46.6	6,600,172	94.7	365,863	5.3	8,007,536
2014 ²	15,134,484	7,017,985	46.4	6,669,590	95.0	348,395	5.0	8,116,499
2015 ²	15,281,945	7,156,393	46.8	6,772,896	94.6	383,496	5.4	8,125,553
2016Q1 ²	15,382,201	7,283,212	47.3	6,933,526	95.2	349,686	4.8	8,098,989
2016Q2 ²	15,352,834	7,203,447	46.9	6,825,460	94.8	377,987	5.2	8,149,387
2016Q2 ³	15,560,390	7,469,445	48.0	7,022,963	94.0	446,482	6.0	7,469,445

TABLE 2 - HISTORICAL TABLE OF NUMBER AND RATE OF UNEMPLOYMENT BY AGE (ALTERNATIVE ESTIMATES)

YEAR	AGE GROUP											
	TOTAL		15 - 19		20 - 24		25 - 29		30 - 39		40 & ABOVE	
	NO.	RATE	NO.	RATE	NO.	RATE	NO.	RATE	NO.	RATE	NO.	RATE
2008 ¹	433,042	6.3	68,487	27.1	166,409	20.8	93,202	10.9	58,838	3.6	46,107	1.4
2009 ¹	471,254	6.9	68,447	27.3	176,801	24.9	100,508	11.9	70,988	4.2	54,511	1.6
2010 ¹	400,335	5.8	59,339	26.5	154,788	22.5	84,777	10.5	59,041	3.6	42,390	1.2
2011 ²	334,854	5.0	42,636	20.9	141,252	20.6	69,319	8.9	53,111	3.3	28,537	0.8
2012 ²	309,703	4.5	43,745	23.5	125,556	19.4	58,227	7.3	48,794	2.8	33,381	1.0
2013 ²	365,863	5.3	50,436	23.8	149,243	22.4	64,566	8.6	55,398	3.2	46,221	1.3
2014 ²	348,395	5.0	49,540	25.7	138,565	22.2	67,235	9.3	53,648	3.0	39,407	1.1
2015 ²	383,496	5.4	55,557	28.6	143,351	22.0	78,592	10.4	60,768	3.4	45,229	1.2
2016Q1 ²	349,686	4.8	61,577	32.6	136,637	21.1	75,071	10.2	44,919	2.5	31,483	0.8
2016Q2 ²	377,987	5.2	56,228	31.6	160,065	24.0	68,844	9.0	50,507	2.8	42,343	1.1
2016Q2 ³	446,482	6.0	74,844	37.2	171,471	25.4	94,779	11.8	64,812	3.6	40,577	1.0

¹- Excluding Northern province² - All the districts are included

Table 3 - Currently Employed persons by Industry group (No. and percentage) (Based on ISIC Fourth Revision) - (Alternative estimates)

Year	Industry group																		
	Total	1	2	3	6	7	8	9	10	11	13	14	15	16	17	19	20	Other	
2013	No.	6,600,172	1,671,216	84,712	1,227,149	515,001	899,928	451,283	146,352	52,763	136,319	58,293	93,101	561,743	279,471	124,054	106,911	151,095	40,778
	%	100.0	25.3	1.3	18.6	7.8	13.6	6.8	2.2	0.8	2.1	0.9	1.4	8.5	4.2	1.9	1.6	2.3	0.6
2014	No.	6,669,590	1,596,116	70,007	1,263,233	530,836	885,220	465,856	159,389	58,863	142,990	44,516	98,294	578,793	293,937	124,437	123,966	181,864	51,273
	%	100.0	23.9	1.0	18.9	8.0	13.3	7.0	2.4	0.9	2.1	0.7	1.5	8.7	4.4	1.9	1.9	2.7	0.8
2015	No.	6,772,896	1,609,226	58,353	1,270,771	523,932	925,132	466,273	176,308	49,686	140,512	60,823	115,388	590,028	300,610	133,581	130,873	167,275	54,126
	%	100.0	23.8	0.9	18.8	7.7	13.7	6.9	2.6	0.7	2.1	0.9	1.7	8.7	4.4	2.0	1.9	2.5	0.8
2016Q1	No.	6,933,526	1,607,618	65,108	1,318,953	548,694	930,479	502,971	176,336	42,889	167,049	62,404	106,998	625,087	313,831	134,273	99,480	190,180	41,174
	%	100.0	23.2	0.9	19.0	7.9	13.4	7.3	2.5	0.6	2.4	0.9	1.5	9.0	4.5	1.9	1.4	2.7	0.6
2016Q2	No.	6,825,460	1,430,796	53,104	1,290,640	581,891	993,043	522,322	161,198	71,392	164,502	44,954	95,031	595,880	303,183	136,272	139,245	195,520	46,487
	%	100.0	21.0	0.8	18.9	8.5	14.5	7.7	2.4	1.0	2.4	0.7	1.4	8.7	4.4	2.0	2.0	2.9	0.7
2016Q3	No.	7,022,963	1,568,341	68,250	1,321,049	616,047	966,906	473,361	182,493	70,921	156,212	44,300	95,299	578,712	337,309	146,588	126,933	216,372	53,871
	%	100.0	22.3	1.0	18.8	8.8	13.8	6.7	2.6	1.0	2.2	0.6	1.4	8.2	4.8	2.1	1.8	3.1	0.8

Note: The tabulation groups based on ISIC (Rev.4) are indicated as A,B,C.....U. Due to the limitations on reliability (based on CV),some of these groups have been combined.

Industry Group

1 Agriculture, forestry and fishing (A)

2 Mining & quarrying (B)

3 Manufacturing (C)

6 Construction, Electricity, gas, steam and air conditioning supply, Water supply, sewerage, waste management and remediation activities (D, E,F)

7 Wholesale and retail trade, repair of motor vehicles and motor cycles(G)

8 Transportation and storage (H)

9 Accommodation and food services activities (I)

10 Information and communication (J)

11 Financial and insurance activities (K)

13 Professional, scientific and technical activities (M)

14 Administrative and support service activities (N)

15 Public administration and defence compulsory social security (O)

16 Education (P)

17 Human health and social work activities (Q)

19 Other service activities (S)

20 Activities of households as employers; undifferentiated goods and services - producing activities of households for own use (T)

Other

Other

12 Real estate activities (L)

18 Arts, entertainment and recreation (R)

21 Activities of extra territorial organizations & bodies (U)