



**QUARTERLY REPORT OF THE
SRI LANKA LABOUR FORCE
SURVEY**

Quarterly Report – 2015

Third Quarter

**DEPARTMENT OF CENSUS & STATISTICS
MINISTRY OF NATIONAL POLICIES AND ECONOMIC
AFFAIRS**

ISBN 978 – 955 – 577 – 963 – 0

Preface

In the past, information on labour force characteristics, employment and unemployment etc. were collected through labour force and socio - economic surveys conducted at five yearly time intervals. However, the employment and unemployment data are required at very short intervals to monitor the programs made in the employment generating policies of the government. Therefore, to satisfy this need, the Department of Census and Statistics (DCS) designed a labour force survey on a quarterly basis, to measure the levels and trends of employment, unemployment and labour force in Sri Lanka on a continuous basis. This survey was commenced from the first quarter of 1990 and this report is the ninety fifth in the series of quarterly reports published so far.

Current survey concepts and methods are very similar to those introduced at the beginning of the survey in 1990. However, some changes were made over the years to improve the accuracy and usefulness of the data. The significant revisions were made on the labour force survey questionnaire in 1996, 2006 and the latest revision was in 2013. The revised version was introduced for the survey conducted in 2013 First quarter, and this report consists with statistics using new concepts and classifications.

The field work of the survey for the third quarter 2015 was done in July, August and September in year 2015. This survey covered the whole country. A nationally representative annual sample of about 25,000 housing units have been selected for the survey in 2015. This report is based on a quarterly sample of 6,250 housing units.

*Dr. A.J. Satharasinghe
Director General of Census & Statistics*

*Department of Census & Statistics,
"Sankhyana Mandiraya",
306/71,
Polduwa Road,
Baththaramulla
01.02.2016.*

Acknowledgements

This report is ninety fifth in the series of the Quarterly Labour Force Survey which was commenced from the first quarter 1990 and is being continued by the Department of the Census and statistics.

Planning and execution of the survey was done by staff of the Sample Survey Division under the direction of Mr. H.R.Dias, Director, Sample Surveys Division and Mr. M.D. Sunil Senanayake Deputy Director, Sample Surveys Division.

The survey activities were organized and supervised by Mrs. W.A.C.Wijebandara, Mr. K.S.R.L.Senadeera, Mrs. M.D.D.D.Deepawansa, Mrs. C.Jayawickrama, Mr. A.K.D.C.N.S.Karunaratna, Mr. K.Weerasiri, Mrs. U.S.Dilrukshi, Mr. M.L.K.P.Kumara, Ms. M.W.L.C.M. Chandrarathne Statisticians & Senior Statistician, of the sample surveys division and Heads of statistics divisions in each district.

The computer data processing and final tabulations were done by Mrs. W.A.S.M.P. Gunasekara, Mr. A.M.A.E.Atapattu, Statistical Officers and Mrs. A.N. Ekanayake, Statistical Assistant of the Sample Surveys Division, under the supervision of Mrs. W.A.C.Wijebandara, Statistician using Microcomputers. The statistical officers, statistical assistants, Information and Communication Technology assistants, Data Entry Officer/Coding clerks and development officers (iii), of the sample survey division are acknowledged for their valuable contribution during the whole survey process.

Developing of sample selection programme and its related computer software was done by Mr. K.M.R. Wickramasinghe, AD (ICT).

This publication was organized and prepared by Mrs. W.A.C. Wijebandara and Mr. A.K.D.C.N.S.Karunaratna Statisticians, Sample Surveys Division, assisted by Mrs. W.A.S.M.P. Gunasekara, Mr. A.M.A.E.Atapattu, Statistical officers. Mr. M.G. Perera, Statistical officer and Mrs. Asanthi Ekanayaka, Statistical Assistant assisted at the editing stage.

The Information & Communication Technology Division, under the direction of Mr. S.A.S. Bandulasena, Additional Director General (ICT) and under the supervision of Mr. P.M.R.Fernando, Deputy Director (ICT) and Mr. W.H.P.N. Weerasiri Deputy Director (ICT), was responsible for the survey data entry and preparation of data entry and computer edits programmes. Data entry was decentralized and manual editing, coding & data entry were done by responsible officers at district office at kachcheries in all districts.

District field staff of the Department who worked on the survey deserves a special word of thanks. They include District Deputy Directors/ Senior Statisticians/ Statisticians for supervision and field Statistical Officers, who worked hard at the data collection stage, to make this survey a success. Printing of the report was done at the staff of Printing Division, under the supervision of Mr. M.J.M Fernando, Statistician.

Finally, I wish to express my appreciation to all the respondents of the survey for their valuable cooperation.

Selected Labour Force Indicators

Indicator	Year									
	2013*	2014*	2011**	2012**	2013**	2014**	2014Q3**	2015Q1**	2015Q2**	2015Q3**
Labour force participation rate										
By Gender										
Total	54.2	53.6	53.0	52.6	53.8	53.3	53.2	53.6	54.3	53.8
Male	75.0	74.8	74.0	75.0	74.9	74.6	74.6	73.9	74.8	74.7
Female	36.3	35.2	34.4	32.9	35.6	34.7	34.4	36.4	36.7	35.7
By residential sector										
Total	54.2	53.6	53.0	52.6	53.8	53.3	53.2	53.6	54.3	53.8
Urban	48.0	49.0	47.8	48.4	47.8	48.9	47.1	46.4	49.5	48.5
Rural	55.5	54.6	53.8	53.5	55.0	54.2	54.4	55.1	55.3	54.9
Unemployment Rate										
By Gender										
Total	4.3	4.3	4.2	4.0	4.4	4.3	4.2	4.7	4.5	5.0
Male	3.2	3.1	2.7	2.8	3.2	3.1	3.3	2.9	3.0	3.5
Female	6.4	6.4	7.0	6.2	6.6	6.5	6.0	7.9	7.2	7.8
By selected age Group (Year)										
20 – 29	13.0	13.5	12.3	11.3	13.0	13.7	14.0	14.1	14.7	14.9
20 – 24	19.3	20.0	17.7	16.8	19.2	20.0	20.8	20.4	21.3	21.7
25 – 29	7.5	8.1	7.6	6.6	7.5	8.3	8.1	8.7	9.2	8.8
By selected educational level										
A/L & above										
Total	8.4	7.9	9.0	7.5	8.6	8.1	7.9	10.1	8.5	10.1
Male	5.6	5.1	5.4	4.5	5.7	5.3	6.3	5.3	3.7	6.0
Female	11.3	10.8	13.1	10.8	11.6	11.0	9.6	14.3	12.9	14.1
Employed population										
By Gender										
Total	8,070,542	8,071,126	8,186,305	8,118,362	8,417,674	8,423,994	8,479,829	8,502,270	8,600,629	8,554,179
Male	5,233,167	5,292,105	5,452,723	5,469,759	5,498,815	5,548,131	5,613,970	5,488,213	5,552,614	5,605,800
Female	2,837,375	2,779,021	2,733,582	2,648,603	2,918,859	2,875,862	2,865,859	3,014,057	3,048,015	2,948,378
By industry (Percentage)										
Total	8,070,542	8,071,126	8,186,305	8,118,362	8,417,674	8,423,994	8,479,829	8,502,270	8,600,629	8,554,179
%	100.0	100.0	100.0	100.0	100.0	100.0	100.0	100.0	100.0	100.0
Agriculture	2,390,884	2,290,367	2,699,244	2,513,673	2,504,310	2,399,629	2,455,034	2,500,322	2,443,301	2,339,633
%	29.6	28.4	33.0	31.0	29.8	28.5	29.0	29.4	28.4	27.4
Industry	2,125,376	2,149,674	1,976,711	2,117,286	2,202,159	2,229,810	2,253,174	2,200,481	2,206,211	2,325,316
%	26.3	26.6	24.1	26.1	26.2	26.5	26.6	25.9	25.7	27.2
Services	3,554,282	3,631,085	3,510,350	3,487,403	3,711,204	3,794,554	3,771,621	3,801,467	3,951,118	3,889,230
%	44.0	45.0	42.9	43.0	44.1	45.0	44.5	44.7	45.9	45.5
By no. of hours worked per week (percentage)										
Total	100.0	100.0	100.0	100.0	100.0	100.0	100.0	100.0	100.0	100.0
0#	5.2	5.2	5.2	4.5	5.2	5.2	4.1	2.0	10.4	4.9
1 – 9	1.8	1.3	1.7	1.2	1.8	1.3	1.0	1.0	2.3	1.5
10 – 39	27.0	27.0	29.9	26.0	27.4	27.5	24.6	25.4	30.7	26.5
40 & above	66.0	66.4	63.1	68.3	65.6	66.0	70.3	71.6	56.6	67.1

has a job but not at work during the reference week

* Excluding Northern Province

**Whole island covered

Note : Working age population considered as (age 15 & over population)

Sri Lanka Labour Force Survey
Summary Statistics on Labour Force Characteristics
2015 3rd Quarter
(All Island)

15 years & over population

	Total	Male	Female	Urban	Rural
Population (15 years & over)	16,742,309	7,773,350	8,968,959	2,787,182	13,955,127
Labour force in this age group	9,008,135	5,810,483	3,197,652	1,350,631	7,657,504
Labour force participation rate	53.8	74.7	35.7	48.5	54.9
Employed population	8,554,179	5,605,800	2,948,378	1,282,831	7,271,348
Employment rate	95.0	96.5	92.2	95.0	95.0
Unemployed population	453,956	204,682	249,274	67,800	386,156
Unemployment rate	5.0	3.5	7.8	5.0	5.0
Not in labour force	7,734,175	1,962,867	5,771,307	1,436,551	6,297,623

20 years & over population

	Total	Male	Female	Urban	Rural
Population (20 years & over)	15,085,151	6,932,897	8,152,255	2,519,694	12,565,457
Labour force in this age group	8,782,531	5,661,550	3,120,982	1,315,385	7,467,146
Labour force participation rate	58.2	81.7	38.3	52.2	59.4
Employed population	8,390,230	5,501,322	2,888,908	1,254,063	7,136,167
Employment rate	95.5	97.2	92.6	95.3	95.6
Unemployed population	392,302	160,228	232,074	61,322	330,979
Unemployment rate	4.5	2.8	7.4	4.7	4.4
Not in labour force	6,302,620	1,271,347	5,031,273	1,204,309	5,098,311

CONTENTS

	Page No.
Preface	iii
Acknowledgements	v
Highlights	vii
Summary Statistics	viii
Contents	ix
Labour Force	1
Employment	2
Unemployment	3
Tables	
Table No.	
1. Historical table of Labour Force Status (current) of the Household Population, 15 years of Age and over - Both Sexes	4
1A. Historical table of Labour Force Status (current) of the Household Population, 15 years of Age and over – Male	5
1B. Historical table of Labour Force Status (current) of the Household Population, 15 years of Age and over – Female	5
2. Labour Force Status (current) of the Household Population 15 years of Age and over, by Age - Both Sexes	6
2A. Labour Force Status (current) of the Household Population 15 years of Age and over, by Age – Male	7
2B. Labour Force Status (current) of the Household Population 15 years of Age and over, by Age – Female	7
3. Historical table of Currently Employed persons by Age Groups (percentage) - Both Sexes	8
3A. Historical table of Currently Employed persons by Age Groups (percentage) – Male	8
3B. Historical table of Currently Employed persons by Age Groups (percentage) – Female	8
4. Historical table of Currently Employed persons by Level of Education (percentage) - Both Sexes	9
4A. Historical table of Currently Employed persons by Level of Education (percentage) – Male	9
4B. Historical table of Currently Employed persons by Level of Education (percentage) – Female	9
5. Historical table of Currently Employed persons by Employment Status (percentage) - Both Sexes	10
5A. Historical table of Currently Employed persons by Employment Status (percentage) – Male	10
5B. Historical table of Currently Employed persons by Employment Status (percentage) – Female	10
6. Currently employed persons by Industry group (Based on ISIC Rev.4) – Both sexes	11
6A. Currently employed persons by Industry group (Based on ISIC Rev.4) – Male	12
6B. Currently employed persons by Industry group (Based on ISIC Rev.4) – Female	13
6C. Historical table of currently employed population by major industry group - Both sexes	14
6D. Historical table of currently employed population by major industry group (percentage) - Both sexes	14
7. Currently employed persons by Occupation group (Based on ISCO 08) - Both sexes	15
7A. Currently employed persons by Occupation group (Based on ISCO 08) – Male	16
7B. Currently employed persons by Occupation group (Based on ISCO 08) – Female	16
8. Currently Employed persons by hours per week actually worked at the main job and Major Industrial group (percentage) - Both Sexes	17
9. Historical table of Currently Unemployed persons by Age Groups (percentage) - Both Sexes	18
9A. Historical table of Currently Unemployed persons by Age Groups (percentage) – Male	18
9B. Historical table of Currently Unemployed persons by Age Groups (percentage) – Female	18
10. Historical table of Currently Unemployed persons by Level of Education (percentage) - Both Sexes	19
10A. Historical table of Currently Unemployed persons by Level of Education (percentage) – Male	19
10B. Historical table of Currently Unemployed persons by Level of Education (percentage) – Female	19
11. Currently Unemployed Persons by Sex and Duration of Unemployment	20
12. Standard error and coefficient of variation of selected variables	21

Appendix 1: Explanatory Notes

Appendix 2: Alternative estimates of employment, unemployment and labour force characteristics

Introduction

Highlights

- Labour force participation rate is 53.8% for the Third Quarter of 2015.
- Unemployment rate for the survey period is 5.0%.

Inside

Labour Force	1
Employment	2
Unemployment	3
Selected Labour Force Indicators	4

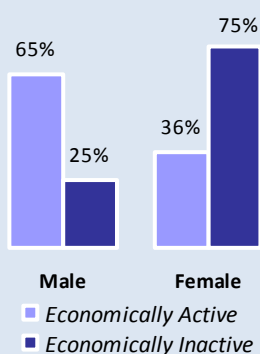


Figure 1 : Distribution of Economically active/Inactive population-

Sri Lanka Labour Force Survey (LFS) is designed to measure the levels and trends of employment, unemployment and labour force in Sri Lanka. LFS has been conducted quarterly, since the first quarter of 1990.

This bulletin contains labour force, employment and unemployment statistics for the third quarter 2015 based on the data collected in July, August and September covering the whole country.

Labour Force

(Economically Active Population)

Table 1 : Economically active population by gender and sector – Third Quarter 2015

Sector	Economically active population					
	Total	%	Male	%	Female	%
Sri Lanka	9,008,135	100.0	5,810,483	64.5	3,197,652	35.5
Urban	1,350,631	100.0	920,616	68.2	430,015	31.8
Rural	7,264,836	100.0	4,667,994	64.3	2,596,842	35.7
Estate	392,668	100.0	221,873	56.5	170,795	43.5

Table 2 : Economically inactive population by gender and sector – Third Quarter 2015

Sector	Economically inactive population					
	Total	%	Male	%	Female	%
Sri Lanka	7,734,175	100.0	1,962,867	25.4	5,771,307	74.6
Urban	1,436,551	100.0	359,633	25.0	1,076,918	75.0
Rural	6,076,378	100.0	1,530,860	25.2	4,545,519	74.8
Estate	221,245	100.0	72,374	32.7	148,871	67.3

Table 3 : LFPR by gender and year

Year	Total	Male	Female
2011	53.0	74.0	34.4
2012	52.6	75.0	32.9
2013	53.8	74.9	35.6
2014	53.3	74.6	34.7
2013 Q3	53.8	74.8	35.6
2014 Q3	53.2	74.6	34.8
2015 Q1	53.6	73.9	36.4
2015 Q2	54.3	74.8	36.7
2015 Q3	53.8	74.7	35.7

Table 3 provides the information on LFPRs since year 2011. Referring the Table 3, It is important to note that, male participation to the labour force is always higher than that of females.

Considering the Table 4, the distribution of LFPR by age group and by gender depicts high male participation compared to female in all age groups. The highest participation rate for male was reported from age group 35–39 years (97.4%), while that for females was reported from the age group of 40 – 44 years (50.8%).

Labour Force

This is the currently economically active population. Which is the number of persons (age 15 years & above) who are employed or unemployed during the reference week.

Labour force participation rate (LFPR)

Labour force population expressed as a percentage of the population, age 15 years and over.

According to the Table 1, the estimated economically active population is about 9.0 million in the third quarter 2015. Of which 64.5 percent are males and 35.5 percent are females. Out of the economically inactive population 25.4 percent are males and 74.6 percent are females (Table 2).

Table 4 : LFPR by age group and gender - Third Quarter 2015

Age group (Years)	Total	Male	Female
Sri Lanka	53.8	74.7	35.7
15 - 19	13.6	17.7	9.4
20 - 24	56.8	73.2	43.0
25 - 29	66.0	93.1	43.5
30 - 34	65.7	95.4	41.8
35 - 39	69.4	97.4	46.4
40 - 44	72.6	97.1	50.8
45 - 49	71.8	94.6	50.5
50 - 54	68.6	94.2	45.6
55 - 59	58.7	86.2	36.7
60+	30.6	47.8	16.1

Definition of Employed

Persons, who worked at least one hour during the reference period, as paid employees, employers, own account workers or contributing family workers are said to be employed. This also includes persons with a job but not at work during the reference period.

Reference Period :

Previous week of the survey week

The Employment Rate

The proportion of employed population to the total labour force.

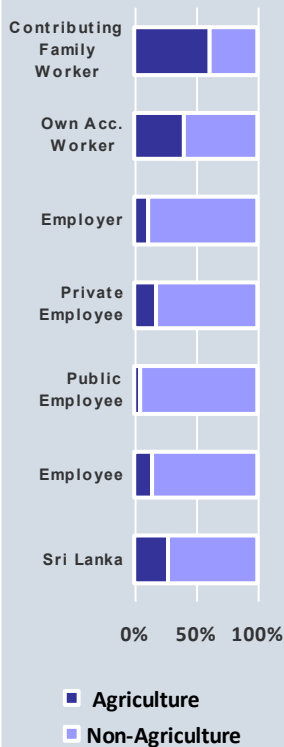


Figure 2 : Distribution of employed population by employment status and Agriculture/ Non- Agriculture sector- Third Quarter 2015

Employment ...

Table 5 : Distribution of Employed population by main industry
(Third Quarter 2014 – Third Quarter 2015)

Quarter	Sri Lanka	Major Industry Group		
		Agriculture	Industries	Services
2014 Q3 (No.)	8,479,829	2,455,034	2,253,174	3,771,621
(%)	100.0	29.0	26.6	44.5
2014 Q4 (No.)	8,395,762	2,552,541	2,134,233	3,708,988
(%)	100.0	30.4	25.4	44.2
2015 Q1 (No.)	8,502,270	2,500,322	2,200,481	3,801,467
(%)	100.0	29.4	25.9	44.7
2015 Q2 (No.)	8,600,629	2,443,301	2,206,211	3,951,118
(%)	100.0	28.4	25.7	45.9
2015 Q3 (No.)	8,554,179	2,339,633	2,325,316	3,889,230
(%)	100.0	27.4	27.2	45.5

Table 5 shows the percentage distribution of employed population by main industry from third quarter 2014 to third quarter 2015. During third quarter of 2015, the total number of employed persons in Sri Lanka is estimated as about 8.6 million. Of which, about 45.5 percent engaged in Services sector, 27.2 percent in Industries sector and 27.4 percent in Agriculture sector.

Table 6 : Distribution of employed population by employment status and Agriculture/Non-Agriculture sector – Third Quarter 2015

Employment Status	Sri Lanka		Sector			
			Agriculture		Non-Agriculture	
	No.	%	No.	%	No.	%
Sri Lanka	8,554,179	100.0	2,339,633	27.4	6,214,545	72.6
Employee	4,693,615	100.0	688,784	14.7	4,004,831	85.3
Public	1,232,706	100.0	68,941	5.6	1,163,765	94.4
Private	3,460,909	100.0	619,843	17.9	2,841,065	82.1
Employer	297,132	100.0	31,085	10.5	266,047	89.5
Own Account Worker	2,768,296	100.0	1,136,550	41.1	1,631,746	58.9
Contributing Family Worker	795,136	100.0	483,215	60.8	311,921	39.2

Table 7 : Distribution of Employed population by main industry & gender – Third Quarter 2015

Major Industry Group	Sri Lanka	Gender	
		Male	Female
Sri Lanka	100.0	100.0	100.0
Agriculture	27.4	25.5	30.9
Industry	27.2	27.4	26.9
Services	45.5	47.2	42.2

Main industry categories and sub sectors

Agriculture

1. Agriculture Forestry and Fishery (A)

Industries

1. Mining & Quarrying (B)
2. Manufacturing (C)
3. Construction, Electricity, gas, steam and air conditioning supply, Water supply, sewerage, waste management and remediation activities (D, E,F)

Services

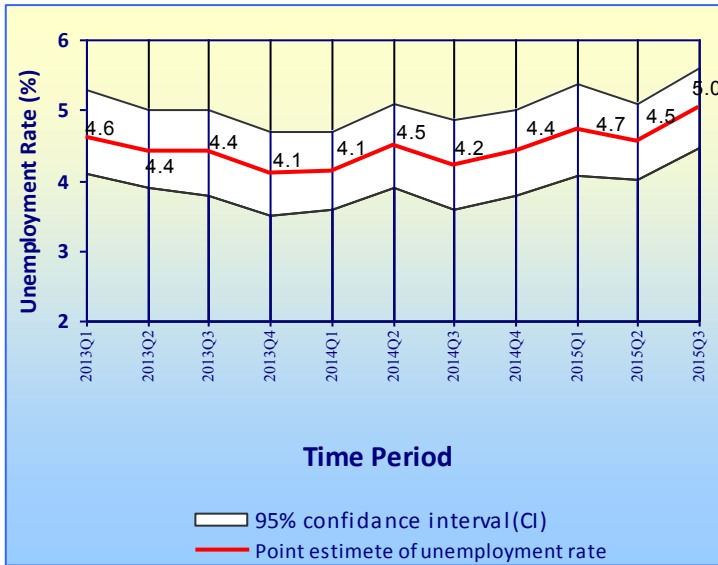
1. Wholesale and retail trade, repair of motor vehicles and motor cycles (G)
2. Transportation and storage (H)
3. Accommodation and food services activities (I)
4. Information and communication (J)
5. Financial and insurance activities (K)
6. Professional, scientific and technical activities (M)
7. Administrative and support service activities (N)
8. Public administration and defense compulsory social security (O)
9. Education (P)
10. Human health and social work activities (Q)
11. Other service activities (S)
12. Activities of households as employers; undifferentiated goods and services - producing activities of households for own use (T)
13. Real estate activities (L) Arts, entertainment and recreation (R) Activities of extra territorial organizations & bodies (U)

As could be seen from the Figure 2 & Table 6 contributing family workers are highly concentrated in Agriculture sector.

Table 7 depicts the percentage distribution of male and female employed population by main industries. Highest employment share is in service sector and this is true for both male & female, while the lowest shares are for industry sector. Among employed females 30.9 percent is in agriculture sector while this share is 25.5 percent for males.

Unemployment ...

Figure 3 : Unemployment rates and it's 95% confidence intervals (2013Q1 - 2015Q3)



¹Sampling error : When a sample, rather than the entire population, is surveyed, estimates differ from the true population values they represent. This difference, or sampling error, occurs by chance, and its variability is measured by the sampling error of the estimate.

For more details, please refer the explanatory note given under the labour force link in the DCS website; www.statistics.gov.lk

Table 8: Unemployment rate by age group and gender – Third Quarter 2015

Age group (Years)	Sri Lanka	Gender	
		Male	Female
Sri Lanka	5.0	3.5	7.8
15–24	22.9	20.3	26.8
25–29	8.8	4.4	16.7
Over 30	1.8	1.0	3.3

These figures are to be treated with caution as the corresponding CV (Coefficient of variation) values are high.

The survey results further revealed that the unemployment among females is higher than that of males, in all age groups. Youth and female unemployment contribute more to the overall unemployment of the country.

The highest unemployment rate is reported from the G.C.E (A/L) and above group which is about 10.1 percent. Corresponding percentages are 6.0 percent and 14.1 percent for males and females respectively. Female unemployment rates are higher than those of males in all levels of education.

This further shows that the problem of unemployment is more acute in the case of educated females than educated males, which was observed consistently over the results of previous survey rounds as well.

Table 9: Unemployment rate by level of education – Third Quarter 2015

Level of Education	Unemployment Rate (%)		
	Sri Lanka	Male	Female
Sri Lanka	5.0	3.5	7.8
Below GCE O/L	3.0	2.3	4.5
GCE O/L	6.7	6.0	8.1
GCE A/L & above	10.1	6.0	14.1

As can be seen from Table 8, overall unemployment rate reported for female is 7.8 percent and it is 3.5 percent for male. Youth unemployment rate 15 – 24 years reported for the third quarter 2015 is 22.9 percent and that reports the highest unemployment rate among all age groups. Further rates for both males and females are 20.3 and 26.8 percent respectively for age group 15 – 24.

Definition of Unemployed

Persons available and/or looking for work, and who did not work and taken steps to find a job during last four weeks and ready to accept a job given a work opportunity within next two weeks are said to be unemployed.

The Unemployment Rate

The proportion of unemployed population to the total labour force.

The number of unemployed persons is estimated as of 453,956 during the third quarter 2015. The unemployment rate for the third quarter 2015 is 5.0 percent.

As shown in Figure 3, it is very important to note that, when sampling error¹ is considered there are no statistically significant drops/increases of unemployment rates reported in different time periods starting from First quarter 2013 to Third quarter 2015.

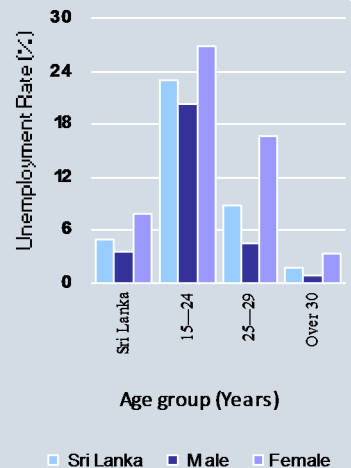


Figure 3: Unemployment rate by age group and gender – Third Quarter 2015

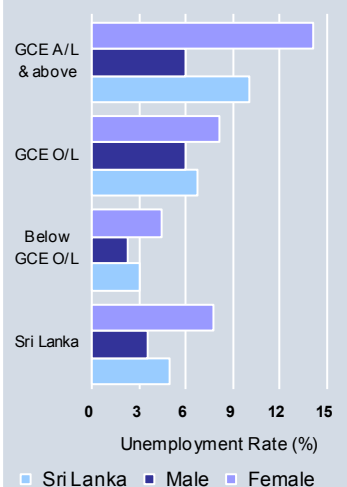


Figure 4: Unemployment rate by level of education and gender – Third Quarter 2015

TABLE 1 - HISTORICAL TABLE OF LABOUR FORCE STATUS (CURRENT) OF THE HOUSEHOLD POPULATION, 15 YEARS OF AGE AND OVER - BOTH SEXES

YEAR	NATIONAL LEVEL DATA							
	HOUSEHOLD POPULATION (15 YEARS & OVER)	LABOUR FORCE						NOT IN LABOUR FORCE NUMBER
		TOTAL LABOUR FORCE	LABOUR FORCE PARTICI: RATE(%)	EMPLOYED		UNEMPLOYED		
				NUMBER	RATE (% TO TOTAL LABOUR FORCE)	NUMBER	RATE (% TO TOTAL LABOUR FORCE)	
2008 ¹	14,626,833	8,061,725	55.1	7,628,683	94.6	433,042	5.4	6,565,107
2009 ¹	14,876,264	8,051,089	54.1	7,579,835	94.1	471,254	5.9	6,825,175
2010 ¹	15,166,285	8,096,477	53.4	7,696,142	95.1	400,335	4.9	7,069,808
2011 ²	16,122,111	8,543,776	53.0	8,186,305	95.8	357,471	4.2	7,578,335
2012 ²	16,081,285	8,454,364	52.6	8,118,362	96.0	336,002	4.0	7,626,921
2013 ²	16,359,761	8,802,113	53.8	8,417,674	95.6	384,439	4.4	7,557,648
2014 ²	16,531,768	8,804,548	53.3	8,423,994	95.7	380,554	4.3	7,727,220
2013Q3 ²	16,360,533	8,809,150	53.8	8,424,409	95.6	384,741	4.4	7,551,382
2014Q3 ²	16,645,617	8,853,951	53.2	8,479,829	95.8	374,122	4.2	7,791,666
2015Q1 ²	16,648,811	8,924,716	53.6	8,502,270	95.3	422,446	4.7	7,724,095
2015Q2 ²	16,596,533	9,009,970	54.3	8,600,629	95.5	409,341	4.5	7,586,563
2015Q3 ²	16,742,309	9,008,135	53.8	8,554,179	95.0	453,956	5.0	7,734,175

¹ - Excluding Northern province

² - All the districts are included

**TABLE 1A - HISTORICAL TABLE OF LABOUR FORCE STATUS (CURRENT) OF THE HOUSEHOLD POPULATION,
15 YEARS OF AGE AND OVER - MALE**

YEAR	HOUSEHOLD POPULATION (15 YEARS & OVER)	LABOUR FORCE						NOT IN LABOUR FORCE NUMBER
		TOTAL LABOUR FORCE	LABOUR FORCE PARTICI: RATE(%)	EMPLOYED		UNEMPLOYED		
				NUMBER	RATE (% TO TOTAL LABOUR FORCE)	NUMBER	RATE (% TO TOTAL LABOUR FORCE)	
2008 ¹	6,848,600	5,212,933	76.1	5,018,954	96.3	193,978	3.7	1,635,668
2009 ¹	6,925,821	5,173,106	74.7	4,949,825	95.7	223,281	4.3	1,752,715
2010 ¹	7,078,246	5,310,872	75.0	5,125,763	96.5	185,108	3.5	1,767,374
2011 ²	7,570,144	5,605,446	74.0	5,452,723	97.3	152,723	2.7	1,964,698
2012 ²	7,508,356	5,629,617	75.0	5,469,759	97.2	159,858	2.8	1,878,740
2013 ²	7,577,344	5,677,815	74.9	5,498,815	96.8	179,000	3.2	1,899,529
2014 ²	7,676,876	5,728,383	74.6	5,548,131	96.9	180,252	3.1	1,948,493
2013Q3 ²	7,561,733	5,655,473	74.8	5,460,400	96.6	195,073	3.4	1,906,260
2014Q3 ²	7,778,242	5,805,087	74.6	5,613,970	96.7	191,117	3.3	1,973,156
2015Q1 ²	7,648,271	5,650,690	73.9	5,488,213	97.1	162,477	2.9	1,997,581
2015Q2 ²	7,657,435	5,726,609	74.8	5,552,614	97.0	173,995	3.0	1,930,826
2015Q3 ²	7,773,350	5,810,483	74.7	5,605,800	96.5	204,682	3.5	1,962,867

**TABLE 1B - HISTORICAL TABLE OF LABOUR FORCE STATUS (CURRENT) OF THE HOUSEHOLD POPULATION,
15 YEARS OF AGE AND OVER - FEMALE**

YEAR	HOUSEHOLD POPULATION (15 YEARS & OVER)	LABOUR FORCE						NOT IN LABOUR FORCE NUMBER
		TOTAL LABOUR FORCE	LABOUR FORCE PARTICI: RATE(%)	EMPLOYED		UNEMPLOYED		
				NUMBER	RATE (% TO TOTAL LABOUR FORCE)	NUMBER	RATE (% TO TOTAL LABOUR FORCE)	
2008 ¹	7,778,232	2,848,793	36.6	2,609,729	91.6	239,064	8.4	4,929,440
2009 ¹	7,950,443	2,877,983	36.2	2,630,010	91.4	247,973	8.6	5,072,460
2010 ¹	8,088,039	2,785,605	34.4	2,570,379	92.3	215,226	7.7	5,302,434
2011 ²	8,551,967	2,938,329	34.4	2,733,582	93.0	204,748	7.0	5,613,637
2012 ²	8,572,929	2,824,747	32.9	2,648,603	93.8	176,144	6.2	5,748,181
2013 ²	8,782,417	3,124,298	35.6	2,918,859	93.4	205,439	6.6	5,658,119
2014 ²	8,854,892	3,076,165	34.7	2,875,862	93.5	200,303	6.5	5,778,727
2013Q3 ²	8,798,799	3,153,677	35.8	2,964,009	94.0	189,668	6.0	5,645,122
2014Q3 ²	8,867,375	3,048,865	34.4	2,865,859	94.0	183,005	6.0	5,818,510
2015Q1 ²	9,000,540	3,274,026	36.4	3,014,057	92.1	259,969	7.9	5,726,514
2015Q2 ²	8,939,097	3,283,361	36.7	3,048,015	92.8	235,347	7.2	5,655,736
2015Q3 ²	8,968,959	3,197,652	35.7	2,948,378	92.2	249,274	7.8	5,771,307

¹ - Excluding Northern province

² - All the districts are included

**TABLE 2 - LABOUR FORCE STATUS (CURRENT) OF THE HOUSEHOLD POPULATION 15 YEARS OF AGE AND OVER ,
BY AGE - BOTH SEXES**

(2015 3rd Quarter)

AGE	HOUSEHOLD POPULATION (15 YEARS & OVER)	LABOUR FORCE						NOT IN LABOUR FORCE NUMBER
		TOTAL LABOUR FORCE	LABOUR FORCE PARTICI: RATE(%)	EMPLOYED NUMBER RATE (% TO TOTAL LABOUR FORCE)		UNEMPLOYED NUMBER RATE (% TO TOTAL LABOUR FORCE)		
ALL AGES	16,742,309	9,008,135	53.8	8,554,179	95.0	453,956	5.0	7,734,175
15 - 19 YRS	1,657,158	225,603	13.6	163,949	72.7	61,654	27.3	1,431,555
20 - 24 YRS	1,478,623	840,090	56.8	657,957	78.3	182,133	21.7	638,533
25 - 29 YRS	1,420,017	936,882	66.0	853,980	91.2	82,902	8.8	483,136
30 - 39 YRS	3,141,286	2,121,816	67.5	2,054,038	96.8	67,778	3.2	1,019,470
40 + YRS	9,045,225	4,883,744	54.0	4,824,255	98.8	59,489	1.2	4,161,481

**TABLE 2A - LABOUR FORCE STATUS (CURRENT) OF THE HOUSEHOLD POPULATION 15 YEARS OF AGE AND OVER ,
BY AGE - MALE**

(2015 3rd Quarter)

AGE	HOUSEHOLD POPULATION (15 YEARS & OVER)	LABOUR FORCE						NOT IN LABOUR FORCE NUMBER
		TOTAL LABOUR FORCE	LABOUR FORCE PARTICI: RATE(%)	EMPLOYED		UNEMPLOYED		
				NUMBER	RATE (% TO TOTAL LABOUR FORCE)	NUMBER	RATE (% TO TOTAL LABOUR FORCE)	
ALL AGES	7,773,350	5,810,483	74.7	5,605,800	96.5	204,682	3.5	1,962,867
15 - 19 YRS	840,454	148,933	17.7	104,479	70.2	44,454	29.8	691,521
20 - 24 YRS	676,841	495,159	73.2	408,899	82.6	86,260	17.4	181,682
25 - 29 YRS	642,507	598,430	93.1	572,028	95.6	26,402	4.4	44,077
30 - 39 YRS	1,409,389	1,358,453	96.4	1,336,498	98.4	21,955	1.6	50,936
40 + YRS	4,204,160	3,209,508	76.3	3,183,897	99.2	25,611	0.8	994,652

**TABLE 2B - LABOUR FORCE STATUS (CURRENT) OF THE HOUSEHOLD POPULATION 15 YEARS OF AGE AND OVER ,
BY AGE - FEMALE**

(2015 3rd Quarter)

AGE	HOUSEHOLD POPULATION (15 YEARS & OVER)	LABOUR FORCE						NOT IN LABOUR FORCE NUMBER
		TOTAL LABOUR FORCE	LABOUR FORCE PARTICI: RATE(%)	EMPLOYED		UNEMPLOYED		
				NUMBER	RATE (% TO TOTAL LABOUR FORCE)	NUMBER	RATE (% TO TOTAL LABOUR FORCE)	
ALL AGES	8,968,959	3,197,652	35.7	2,948,378	92.2	249,274	7.8	5,771,307
15 - 19 YRS	816,705	76,670	9.4	59,470	77.6	17,200	22.4	740,034
20 - 24 YRS	801,782	344,931	43.0	249,058	72.2	95,873	27.8	456,851
25 - 29 YRS	777,511	338,452	43.5	281,951	83.3	56,500	16.7	439,059
30 - 39 YRS	1,731,897	763,363	44.1	717,540	94.0	45,822	6.0	968,534
40 + YRS	4,841,065	1,674,236	34.6	1,640,358	98.0	33,878	2.0	3,166,829

These figures are to be treated with caution as the corresponding CV (Coefficient of variation) values are high.

**TABLE 3 - HISTORICAL TABLE OF CURRENTLY EMPLOYED PERSONS BY AGE GROUPS
(PERCENTAGE) - BOTH SEXES**

Year	All Ages	Age Groups				
		15 - 19 YRS	20 - 24 YRS	25 - 29 YRS	30 - 39 YRS	40+ YRS
2008 ¹	100.0	3.4	9.9	11.7	24.0	51.0
2009 ¹	100.0	3.4	8.6	11.5	24.4	52.1
2010 ¹	100.0	3.0	8.5	10.9	24.0	53.5
2011 ²	100.0	3.1	8.6	11.0	24.3	53.0
2012 ²	100.0	2.5	8.3	11.0	25.2	53.0
2013 ²	100.0	2.7	7.9	10.1	24.8	54.5
2014 ²	100.0	2.4	7.2	9.7	25.2	55.5
2013Q3 ²	100.0	2.9	8.4	9.6	23.8	55.3
2014Q3 ²	100.0	2.5	6.9	9.3	26.0	55.4
2015Q1 ²	100.0	2.5	7.3	9.8	24.0	56.4
2015Q2 ²	100.0	2.2	7.0	9.8	25.4	55.5
2015Q3 ²	100.0	1.9	7.7	10.0	24.0	56.4

**TABLE 3A - HISTORICAL TABLE OF CURRENTLY EMPLOYED PERSONS BY AGE GROUPS
(PERCENTAGE) - MALE**

Year	All Ages	Age Groups				
		15 - 19 YRS	20 - 24 YRS	25 - 29 YRS	30 - 39 YRS	40+ YRS
2008 ¹	100.0	3.6	9.7	11.9	24.1	50.7
2009 ¹	100.0	3.5	8.4	11.8	24.3	52.0
2010 ¹	100.0	3.1	8.2	11.3	24.1	53.3
2011 ²	100.0	3.2	8.6	11.3	24.3	52.5
2012 ²	100.0	2.7	8.3	11.2	25.2	52.6
2013 ²	100.0	2.9	7.8	10.2	25.0	54.1
2014 ²	100.0	2.4	7.3	9.6	25.5	55.2
2013Q3 ²	100.0	3.0	8.6	9.2	24.4	54.7
2014Q3 ²	100.0	2.6	6.4	9.3	26.2	55.5
2015Q1 ²	100.0	2.5	7.3	9.7	23.8	56.6
2015Q2 ²	100.0	2.4	7.1	9.7	25.3	55.5
2015Q3 ²	100.0	1.9	7.3	10.2	23.8	56.8

**TABLE 3B - HISTORICAL TABLE OF CURRENTLY EMPLOYED PERSONS BY AGE GROUPS
(PERCENTAGE) - FEMALE**

Year	All Ages	Age Groups				
		15 - 19 YRS	20 - 24 YRS	25 - 29 YRS	30 - 39 YRS	40+ YRS
2008 ¹	100.0	3.2	10.2	11.2	24.0	51.5
2009 ¹	100.0	3.3	8.9	11.0	24.6	52.2
2010 ¹	100.0	2.9	9.2	10.0	23.9	54.0
2011 ²	100.0	2.8	8.5	10.3	24.4	54.0
2012 ²	100.0	2.2	8.5	10.5	25.1	53.7
2013 ²	100.0	2.4	8.0	10.0	24.3	55.2
2014 ²	100.0	2.2	7.1	9.9	24.8	56.0
2013Q3 ²	100.0	2.6	7.8	10.5	22.7	56.4
2014Q3 ²	100.0	2.2	7.8	9.4	25.5	55.2
2015Q1 ²	100.0	2.5	7.3	9.8	24.3	56.1
2015Q2 ²	100.0	1.9	7.0	10.0	25.6	55.6
2015Q3 ²	100.0	2.0	8.4	9.6	24.3	55.6

¹ - Excluding Northern province

² - All the districts are included

**TABLE 4 - HISTORICAL TABLE OF CURRENTLY EMPLOYED PERSONS BY LEVEL OF EDUCATION
(PERCENTAGE) - BOTH SEXES**

Year	Total	Level of education			
		Grade 5 & Below	Grades 6 - 10	GCE (O.L)/ NCGE	GCE (A.L)/ HNCE & above
2008 ¹	100.0	20.8	47.4	15.8	15.9
2009 ¹	100.0	21.1	47.2	15.5	16.2
2010 ¹	100.0	20.2	48.2	15.9	15.8
2011 ²	100.0	18.8	48.1	15.7	17.4
2012 ²	100.0	18.5	47.2	17.6	16.7
2013 ²	100.0	17.9	47.8	16.0	18.3
2014 ²	100.0	16.1	48.9	16.1	18.8
2013Q3 ²	100.0	18.0	46.4	16.7	18.9
2014Q3 ²	100.0	16.2	49.5	16.7	17.6
2015Q1 ²	100.0	16.3	49.1	17.0	17.5
2015Q2 ²	100.0	16.3	46.2	17.7	19.7
2015Q3 ²	100.0	17.1	46.8	18.1	18.0

**TABLE 4A - HISTORICAL TABLE OF CURRENTLY EMPLOYED PERSONS BY LEVEL OF EDUCATION
(PERCENTAGE) - MALE**

Year	Total	Level of education			
		Grade 5 & Below	Grades 6 - 10	GCE (O.L)/ NCGE	GCE (A.L)/ HNCE & above
2008 ¹	100.0	20.1	50.6	16.1	13.2
2009 ¹	100.0	20.3	50.7	15.7	13.3
2010 ¹	100.0	19.1	51.6	16.2	13.1
2011 ²	100.0	18.3	51.0	16.1	14.6
2012 ²	100.0	17.9	51.1	17.8	13.2
2013 ²	100.0	17.6	51.4	16.2	14.8
2014 ²	100.0	16.1	52.6	16.3	15.0
2013Q3 ²	100.0	17.3	50.3	17.1	15.3
2014Q3 ²	100.0	16.0	53.5	16.5	13.9
2015Q1 ²	100.0	16.0	53.0	17.7	13.3
2015Q2 ²	100.0	16.1	50.0	18.4	15.5
2015Q3 ²	100.0	17.4	50.2	18.2	14.2

**TABLE 4B - HISTORICAL TABLE OF CURRENTLY EMPLOYED PERSONS BY LEVEL OF EDUCATION
(PERCENTAGE) - FEMALE**

Year	Total	Level of education			
		Grade 5 & Below	Grades 6 - 10	GCE (O.L)/ NCGE	GCE (A.L)/ HNCE & above
2008 ¹	100.0	22.2	41.3	15.3	21.2
2009 ¹	100.0	22.5	40.6	15.3	21.7
2010 ¹	100.0	22.3	41.3	15.3	21.1
2011 ²	100.0	19.8	42.2	15.0	23.1
2012 ²	100.0	19.8	39.2	17.2	23.8
2013 ²	100.0	18.5	41.0	15.7	24.8
2014 ²	100.0	16.2	41.8	15.8	26.1
2013Q3 ²	100.0	19.4	39.2	15.9	25.6
2014Q3 ²	100.0	16.4	41.6	17.1	24.8
2015Q1 ²	100.0	16.9	42.1	15.7	25.3
2015Q2 ²	100.0	16.6	39.4	16.5	27.5
2015Q3 ²	100.0	16.6	40.2	17.9	25.3

¹ - Excluding Northern province

² - All the districts are included

**TABLE 5 - HISTORICAL TABLE OF CURRENTLY EMPLOYED PERSONS BY EMPLOYMENT STATUS
(PERCENTAGE) - BOTH SEXES**

YEAR	TOTAL EMPLOYED	EMPLOYEE			EMPLOYER	OWN	UNPAID
		TOTAL	PUBLIC	PRIVATE		ACCOUNT WORKER	FAMILY WORKER
2008 ¹	100.0	56.5	15.3	41.3	2.9	30.3	10.3
2009 ¹	100.0	57.7	15.5	42.2	2.6	29.2	10.4
2010 ¹	100.0	55.5	14.3	41.3	2.6	31.5	10.3
2011 ²	100.0	55.0	14.4	40.5	2.9	31.5	10.7
2012 ²	100.0	56.5	15.2	41.3	2.8	31.9	8.8
2013 ²	100.0	55.7	15.1	40.6	3.0	32.2	9.1
2014 ²	100.0	56.4	15.3	41.1	2.8	31.9	8.9
2013Q3 ²	100.0	56.5	16.4	40.1	3.0	31.5	9.0
2014Q3 ²	100.0	55.2	14.7	40.5	3.1	32.3	9.4
2015Q1 ²	100.0	55.2	14.7	40.5	2.7	33.0	9.1
2015Q2 ²	100.0	57.5	15.7	41.7	3.1	32.1	7.4
2015Q3 ²	100.0	54.9	14.4	40.5	3.5	32.4	9.3

**TABLE 5A - HISTORICAL TABLE OF CURRENTLY EMPLOYED PERSONS BY EMPLOYMENT STATUS
(PERCENTAGE) - MALE**

YEAR	TOTAL EMPLOYED	EMPLOYEE			EMPLOYER	OWN	UNPAID
		TOTAL	PUBLIC	PRIVATE		ACCOUNT WORKER	FAMILY WORKER
2008 ¹	100.0	57.6	13.7	43.9	4.1	34.2	4.1
2009 ¹	100.0	59.2	13.7	45.5	3.6	33.0	4.3
2010 ¹	100.0	56.2	12.8	43.4	3.5	36.0	4.3
2011 ²	100.0	55.8	12.7	43.1	3.8	36.0	4.3
2012 ²	100.0	56.6	12.8	43.8	3.8	35.9	3.6
2013 ²	100.0	56.6	12.8	43.9	4.2	36.2	3.0
2014 ²	100.0	57.3	13.0	44.3	3.7	36.1	2.9
2013Q3 ²	100.0	56.6	13.3	43.3	4.3	35.8	3.3
2014Q3 ²	100.0	56.9	12.6	44.3	3.9	35.8	3.4
2015Q1 ²	100.0	56.3	12.7	43.6	3.8	36.9	3.0
2015Q2 ²	100.0	57.6	13.0	44.7	4.0	35.9	2.4
2015Q3 ²	100.0	56.0	12.9	43.2	4.6	36.4	3.1

**TABLE 5B - HISTORICAL TABLE OF CURRENTLY EMPLOYED PERSONS BY EMPLOYMENT STATUS
(PERCENTAGE) - FEMALE**

YEAR	TOTAL EMPLOYED	EMPLOYEE			EMPLOYER	OWN	UNPAID
		TOTAL	PUBLIC	PRIVATE		ACCOUNT WORKER	FAMILY WORKER
2008 ¹	100.0	54.4	18.2	36.2	0.7	22.8	22.1
2009 ¹	100.0	55.0	19.0	36.0	0.9	22.1	22.0
2010 ¹	100.0	54.3	17.3	37.0	0.8	22.6	22.3
2011 ²	100.0	53.2	17.8	35.4	0.9	22.7	23.2
2012 ²	100.0	56.1	19.9	36.2	0.9	23.6	19.4
2013 ²	100.0	54.0	19.4	34.6	0.9	24.6	20.5
2014 ²	100.0	54.7	19.9	34.9	1.0	23.7	20.6
2013Q3 ²	100.0	56.2	22.1	34.1	0.8	23.6	19.4
2014Q3 ²	100.0	52.0	18.8	33.2	1.4	25.4	21.2
2015Q1 ²	100.0	53.1	18.4	34.7	0.8	26.1	20.0
2015Q2 ²	100.0	57.1	20.8	36.4	1.3	25.0	16.5
2015Q3 ²	100.0	52.7	17.4	35.3	1.4	24.8	21.1

¹ - Excluding Northern province

² - All the districts are included

These figures are to be treated with caution as the corresponding CV (Coefficient of variation) values are high.

Table 6 - Currently Employed person by Industry group (Based on ISIC Fourth Revision) - both sexes

Year	Total	Industry Group																
		1	2	3	6	7	8	9	10	11	13	14	15	16	17	19	20	Other
2013	8,417,674	2,504,310	100,153	1,514,039	587,968	1,150,911	517,511	188,219	62,640	153,027	67,964	107,027	629,288	329,572	141,020	131,982	182,277	49,766
2014	8,423,994	2,399,629	79,193	1,535,243	615,374	1,110,605	527,781	199,602	71,357	160,728	52,556	112,335	654,938	341,183	138,033	143,889	219,463	62,083
2013Q3	8,424,409	2,417,569	99,365	1,559,801	563,178	1,152,871	468,023	179,715	81,633	167,329	71,116	112,284	631,193	379,552	146,451	128,103	220,715	45,509
2014Q3	8,479,829	2,455,034	92,293	1,522,508	638,374	1,130,811	570,134	218,904	53,217	152,603	41,595	106,779	667,197	292,472	123,828	160,968	180,015	73,098
2015Q1	8,502,270	2,500,322	79,101	1,554,639	566,742	1,126,627	526,142	210,411	59,932	154,288	64,446	128,356	677,940	292,207	134,227	148,666	207,692	70,533
2015Q2	8,600,629	2,443,301	39,690	1,551,418	615,103	1,097,800	521,785	202,063	66,271	174,775	70,211	138,265	690,919	393,220	144,970	167,036	203,455	80,348
2015Q3	8,554,179	2,339,633	79,554	1,635,878	609,884	1,206,774	522,382	233,293	48,313	152,905	71,119	135,242	626,612	355,227	137,436	172,574	174,308	53,045

Note: These Industry groups are based on ISIC - Rev. 4

1 Agriculture, forestry and fishing (A)

2 Mining & quarrying (B)

3 Manufacturing (C)

6 Construction, Electricity, gas, steam and air conditioning supply, Water supply, sewerage, waste management and remediation activities (D, E,F)

7 Wholesale and retail trade, repair of motor vehicles and motor cycles(G)

8 Transportation and storage (H)

9 Accommodation and food services activities (I)

10 Information and communication (J)

11 Financial and insurance activities (K)

13 Professional, scientific and technical activities (M)

14 Administrative and support service activities (N)

15 Public administration and defence compulsory social security (O)

16 Education (P)

17 Human health and social work activities (Q)

19 Other service activities (S)

20 Activities of households as employers; undifferentiated goods and services - producing activities of households for own use (T)

Other

Other

12 Real estate activities (L)

18 Arts, entertainment and recreation (R)

21 Activities of extra territorial organizations & bodies (U)

Table 6A - Currently Employed person by Industry group (Based on ISIC Fourth Revision) - Male

Year	Total	Industry Group																
		1	2	3	6	7	8	9	10	11	13	14	15	16	17	19	20	Other
2013	5,498,815	1,532,888	88,137	800,081	570,928	818,537	494,339	135,302	47,762	89,213	41,868	78,616	407,594	98,169	54,441	92,539	108,256	40,144
2014	5,548,131	1,482,816	73,998	812,534	589,244	792,808	512,240	137,400	54,237	91,064	34,806	89,998	422,979	104,820	60,202	111,841	129,848	47,295
2013Q3	5,460,400	1,477,031	90,801	838,262	544,400	838,078	447,558	133,081	61,564	93,653	44,313	81,311	395,070	116,053	48,422	91,193	121,393	38,217
2014Q3	5,613,970	1,515,812	85,601	806,493	602,794	778,216	555,183	162,370	43,786	87,096	30,185	84,722	437,431	94,410	57,740	118,083	95,972	58,075
2015Q1	5,488,213	1,506,247	74,324	805,598	535,744	798,982	508,553	139,409	46,611	74,204	44,398	97,057	438,803	80,942	44,339	112,023	127,360	53,619
2015Q2	5,552,614	1,466,298	36,805	821,316	589,311	785,229	502,178	143,852	55,560	98,147	45,088	110,491	446,884	110,485	50,383	121,926	107,179	61,483
2015Q3	5,605,800	1,427,809	74,428	867,904	591,232	855,608	512,482	168,599	36,482	87,867	47,550	101,815	415,843	105,850	47,234	112,645	113,798	38,653

Note: These Industry groups are based on ISIC - Rev. 4

These figures are to be treated with caution as the corresponding CV (Coefficient of variation) values are high.

1 Agriculture, forestry and fishing (A)

2 Mining & quarrying (B)

3 Manufacturing (C)

6 Construction, Electricity, gas, steam and air conditioning supply, Water supply, sewerage, waste management and remediation activities (D, E,F)

7 Wholesale and retail trade, repair of motor vehicles and motor cycles(G)

8 Transportation and storage (H)

9 Accommodation and food services activities (I)

10 Information and communication (J)

11 Financial and insurance activities (K)

13 Professional, scientific and technical activities (M)

14 Administrative and support service activities (N)

15 Public administration and defence compulsory social security (O)

16 Education (P)

17 Human health and social work activities (Q)

19 Other service activities (S)

20 Activities of households as employers; undifferentiated goods and services - producing activities of households for own use (T)

Other

Other

12 Real estate activities (L)

18 Arts, entertainment and recreation (R)

21 Activities of extra territorial organizations & bodies (U)

Table 6B - Currently Employed person by Industry group (Based on ISIC Fourth Revision) - Female

Year	Total	Industry Group																
		1	2	3	6	7	8	9	10	11	13	14	15	16	17	19	20	Other
2013	2,918,859	971,422	12,016	713,957	17,040	332,374	23,173	52,917	14,878	63,814	26,096	28,411	221,695	231,402	86,578	39,443	74,021	9,622
2014	2,875,862	916,814	5,195	722,709	26,130	317,797	15,541	62,201	17,120	69,664	17,750	22,337	231,959	236,363	77,830	32,048	89,615	14,789
2013Q3	2,964,009	940,538	8,564	721,539	18,777	314,793	20,464	46,634	20,069	73,677	26,804	30,973	236,124	263,500	98,029	36,910	99,322	7,292
2014Q3	2,865,859	939,222	6,691	716,014	35,580	352,596	14,951	56,534	9,431	65,507	11,411	22,057	229,766	198,061	66,088	42,885	84,044	15,022
2015Q1	3,014,057	994,075	4,777	749,041	30,997	327,645	17,589	71,002	13,321	80,084	20,049	31,299	239,137	211,265	89,888	36,643	80,332	16,914
2015Q2	3,048,015	977,003	2,885	730,102	25,793	312,571	19,607	58,211	10,711	76,627	25,123	27,774	244,035	282,735	94,587	45,110	96,276	18,864
2015Q3	2,948,378	911,824	5,126	767,974	18,652	351,165	9,899	64,694	11,830	65,038	23,569	33,427	210,769	249,377	90,202	59,928	60,511	14,392

Note: These Industry groups are based on ISIC - Rev. 4

These figures are to be treated with caution as the corresponding CV (Coefficient of variation) values are high.

1 Agriculture, forestry and fishing (A)

2 Mining & quarrying (B)

3 Manufacturing (C)

6 Construction, Electricity, gas, steam and air conditioning supply, Water supply, sewerage, waste management and remediation activities (D, E,F)

7 Wholesale and retail trade, repair of motor vehicles and motor cycles(G)

8 Transportation and storage (H)

9 Accommodation and food services activities (I)

10 Information and communication (J)

11 Financial and insurance activities (K)

13 Professional, scientific and technical activities (M)

14 Administrative and support service activities (N)

15 Public administration and defence compulsory social security (O)

16 Education (P)

17 Human health and social work activities (Q)

19 Other service activities (S)

20 Activities of households as employers; undifferentiated goods and services - producing activities of households for own use (T)

Other

Other

12 Real estate activities (L)

18 Arts, entertainment and recreation (R)

21 Activities of extra territorial organizations & bodies (U)

Table 6C: Historical table of currently employed population by major industry group - Both sexes

Major Industry Group	Year						
	2013	2014	2013Q3	2014Q3	2015Q1	2015Q2	2015Q3
Total	8,417,674	8,423,994	8,424,409	8,479,829	8,502,270	8,600,629	8,554,179
Agriculture	2,504,310	2,399,629	2,417,569	2,455,034	2,500,322	2,443,301	2,339,633
Industry	2,202,159	2,229,810	2,222,344	2,253,174	2,200,481	2,206,211	2,325,316
Services	3,711,204	3,794,554	3,784,496	3,771,621	3,801,467	3,951,118	3,889,230

Table 6D: Historical table of currently employed population by major industry group (percentage) - Both sexes

Major Industry Group	Year						
	2013	2014	2013Q3	2014Q3	2015Q1	2015Q2	2015Q3
Total	100.0	100.0	100.0	100.0	100.0	100.0	100.0
Agriculture	29.8	28.5	28.7	29.0	29.4	28.4	27.4
Industry	26.2	26.5	26.4	26.6	25.9	25.7	27.2
Services	44.1	45.0	44.9	44.5	44.7	45.9	45.5

Note: These Industry groups are based on ISIC - Rev. 4

Agriculture

1. Agriculture Forestry and Fishery (A)

Industries

1. Mining & Quarrying (B)
2. Manufacturing (C)
3. Construction, Electricity, gas, steam and air conditioning supply, Water supply, sewerage, waste management and remediation activities (D, E,F)

Services

1. Wholesale and retail trade, repair of motor vehicles and motor cycles(G)
2. Transportation and storage (H)
3. Accommodation and food services activities (I)
4. Information and communication (J)
5. Financial and insurance activities (K)
6. Professional, scientific and technical activities (M)
7. Administrative and support service activities (N)
8. Public administration and defence compulsory social security (O)
9. Education (P)
10. Human health and social work activities (Q)
11. Other service activities (S)
12. Activities of households as employers; undifferentiated goods and services - producing activities of households for own use (T)
13. Real estate activities (L) Arts, entertainment and recreation (R) Activities of extra territorial organizations & bodies (U)

Table 7 - Currently Employed person by Occupation group (Based on ISCO 08) - Both sexes

Year	Occupation group										
	Total	1	2	3	4	5	6	7	8	9	10
2013	8,417,674	393,388	532,446	499,721	311,354	935,546	1,624,971	1,439,192	708,049	1,918,771	54,235
2014	8,423,994	382,344	538,498	500,762	360,460	992,776	1,702,854	1,447,743	700,852	1,764,540	33,164
2013Q3	8,424,409	410,962	568,194	560,401	312,735	953,482	1,526,744	1,436,420	660,846	1,959,064	35,561
2014Q3	8,479,829	411,281	497,037	497,843	367,870	953,240	1,713,156	1,470,774	746,512	1,780,437	41,679
2015Q1	8,502,270	480,086	501,483	499,265	338,643	884,451	1,686,109	1,427,773	795,743	1,860,148	28,570
2015Q2	8,600,629	563,491	617,930	544,724	353,571	880,931	1,562,692	1,393,554	708,286	1,931,450	44,000
2015Q3	8,554,179	507,196	518,229	500,416	338,098	1,012,625	1,539,978	1,431,903	749,512	1,909,427	46,795

These figures are to be treated with caution as the corresponding CV (Coefficient of variation) values are high.

- | | | | |
|---|--|----|---|
| 1 | Managers, Senior Officials and Legislators | 6 | Skilled Agricultura, Forestry and Fishery workers |
| 2 | Professionals | 7 | Craft and Related Trades workers |
| 3 | Technicians and Associate Professionals | 8 | Plant and Machine operators and Assemblers |
| 4 | Clerks and Clerical support workers | 9 | Elementary occupations |
| 5 | Services and Sales workers | 10 | Armed Forces Occupations & unidentified occupations |

Table 7A - Currently Employed person by Occupation group (Based on ISCO 08) - Male

Year	Total	Occupation group									
		1	2	3	4	5	6	7	8	9	10
2013	5,498,815	279,252	203,625	320,862	153,574	647,849	1,064,063	975,201	614,994	1,191,062	48,333
2014	5,548,131	287,467	192,060	334,822	172,674	692,360	1,103,978	971,754	615,479	1,145,164	32,372
2013Q3	5,460,400	286,320	209,881	342,750	164,472	680,057	992,438	970,236	574,852	1,208,337	31,056
2014Q3	5,613,970	302,566	200,880	329,244	163,200	654,527	1,132,517	986,275	663,902	1,141,161	39,698
2015Q1	5,488,213	334,507	173,282	349,375	151,572	616,618	1,076,218	907,389	678,073	1,175,246	25,933
2015Q2	5,552,614	422,142	200,055	367,268	175,461	614,480	1,011,855	937,807	595,353	1,187,043	41,151
2015Q3	5,605,800	383,437	177,213	342,631	172,469	675,375	1,037,426	940,099	646,601	1,192,069	38,479

Table 7B - Currently Employed person by Occupation group (Based on ISCO 08) - Female

Year	Total	Occupation group									
		1	2	3	4	5	6	7	8	9	10
2013	2,918,859	114,136	328,821	178,859	157,780	287,698	560,908	463,990	93,055	727,709	5,902
2014	2,875,862	94,877	346,438	165,940	187,786	300,416	598,876	475,988	85,373	619,376	792
2013Q3	2,964,009	124,641	358,312	217,652	148,262	273,425	534,307	466,184	85,994	750,726	4,505
2014Q3	2,865,859	108,716	296,157	168,599	204,670	298,712	580,639	484,499	82,610	639,275	1,982
2015Q1	3,014,057	145,579	328,201	149,890	187,070	267,833	609,892	520,384	117,670	684,902	2,637
2015Q2	3,048,015	141,349	417,875	177,456	178,110	266,451	550,837	455,748	112,933	744,407	2,849
2015Q3	2,948,378	123,759	341,015	157,785	165,628	337,249	502,552	491,804	102,911	717,358	8,316

These figures are to be treated with caution as the corresponding CV (Coefficient of variation) values are high.

- | | | | |
|---|--|----|---|
| 1 | Managers, Senior Officials and Legislators | 6 | Skilled Agricultura, Forestry and Fishery workers |
| 2 | Professionals | 7 | Craft and Related Trades workers |
| 3 | Technicians and Associate Professionals | 8 | Plant and Machine operators and Assemblers |
| 4 | Clerks and Clerical support workers | 9 | Elementary occupations |
| 5 | Services and Sales workers | 10 | Armed Forces Occupations & unidentified occupations |

TABLE 8 - CURRENTLY EMPLOYED PERSONS BY HOURS PER WEEK ACTUALLY WORKED AT THE MAIN JOB AND MAJOR INDUSTRIAL GROUP (PERCENTAGE) - BOTH SEXES

MAJOR INDUSTRIAL GROUP	TOTAL	0 *	1 - 9	10 - 19	20 - 29	30 - 39	40 - 49	50 & OVER
Total	100.0	4.9	1.5	4.3	7.4	14.8	37.8	29.3
1	100.0	6.4	3.2	8.9	13.0	21.3	34.0	13.3
2	100.0	2.8	..	4.1	2.6	5.3	40.1	45.1
3	100.0	3.4	1.3	2.6	7.5	12.5	38.9	33.8
6	100.0	7.4	1.1	3.6	6.0	13.1	46.1	22.8
7	100.0	2.8	1.1	3.1	5.1	9.8	29.8	48.2
8	100.0	3.7	0.5	1.2	3.4	6.6	35.2	49.5
9	100.0	5.2	..	2.2	3.8	10.0	26.6	52.1
10	100.0	6.9	..	5.7	5.3	..	41.3	40.8
11	100.0	0.8	..	1.6	1.9	8.7	62.6	24.3
13	100.0	8.4	3.0	9.6	40.6	38.4
14	100.0	3.6	0.5	2.4	2.4	6.3	46.3	38.5
15	100.0	3.1	0.0	0.5	0.5	6.8	59.8	29.3
16	100.0	12.4	1.5	3.6	7.6	44.3	25.6	5.0
17	100.0	4.6	..	0.6	3.5	7.3	54.9	29.1
19	100.0	1.6	1.4	8.4	5.6	17.5	27.3	38.2
20	100.0	4.3	1.0	5.2	9.3	14.9	39.7	25.6
Other	100.0	4.5	11.5	12.3	36.4	35.3

* Has a job but not at work during the reference week

.. Negligible

These figures are to be treated with caution as the corresponding CV (Coefficient of variation) values are high.

Industry group

1 Agriculture, forestry and fishing (A)

2 Mining & quarrying (B)

3 Manufacturing (C)

6 Construction, Electricity, gas, steam and air conditioning supply, Water supply, sewerage, waste management and remediation activities (D, E,F)

7 Wholesale and retail trade, repair of motor vehicles and motor cycles(G)

8 Transportation and storage (H)

9 Accommodation and food services activities (I)

10 Information and communication (J)

11 Financial and insurance activities (K)

13 Professional, scientific and technical activities (M)

14 Administrative and support service activities (N)

15 Public administration and defence compulsory social security (O)

16 Education (P)

17 Human health and social work activities (Q)

19 Other service activities (S)

20 Activities of households as employers; undifferentiated goods and services - producing activities of households for own use (T)

Other

Other

12 Real estate activities (L)

18 Arts, entertainment and recreation (R)

21 Activities of extra territorial organizations & bodies (U)

**TABLE 9 - HISTORICAL TABLE OF CURRENTLY UNEMPLOYED PERSONS BY AGE GROUPS
(PERCENTAGE) - BOTH SEXES**

YEAR	TOTAL	AGE GROUPS				
		15 - 19 YRS	20 - 24 YRS	25 - 29 YRS	30 - 39 YRS	40 + YRS
2008 ¹	100.0	15.8	38.4	21.5	13.6	10.6
2009 ¹	100.0	14.5	37.5	21.3	15.1	11.6
2010 ¹	100.0	14.8	38.7	21.2	14.7	10.6
2011 ²	100.0	12.8	42.5	20.6	15.6	8.5
2012 ²	100.0	14.2	40.6	18.8	15.6	10.7
2013 ²	100.0	13.7	40.9	18.1	15.2	12.1
2014 ²	100.0	14.3	39.9	19.3	15.2	11.3
2013Q3 ²	100.0	14.6	36.4	18.4	16.1	14.5
2014Q3 ²	100.0	14.1	40.8	18.7	13.9	12.5
2015Q1 ²	100.0	17.2	37.6	18.7	15.0	11.5
2015Q2 ²	100.0	12.9	40.1	20.9	15.1	11.0
2015Q3 ²	100.0	13.6	40.1	18.3	14.9	13.1

**TABLE 9A - HISTORICAL TABLE OF CURRENTLY UNEMPLOYED PERSONS BY AGE GROUPS
(PERCENTAGE) - MALE**

YEAR	TOTAL	AGE GROUPS				
		15 - 19 YRS	20 - 24 YRS	25 - 29 YRS	30 - 39 YRS	40+ YRS
2008 ¹	100.0	19.4	37.8	19.5	9.4	13.9
2009 ¹	100.0	17.9	36.4	18.9	12.4	14.4
2010 ¹	100.0	19.6	41.2	15.5	11.7	12.0
2011 ²	100.0	17.6	44.9	16.7	13.1	7.6
2012 ²	100.0	19.5	41.6	17.1	12.4	9.4
2013 ²	100.0	16.9	44.0	15.4	11.6	12.1
2014 ²	100.0	20.1	37.5	18.2	11.7	12.4
2013Q3 ²	100.0	19.9	38.4	14.8	12.4	14.5
2014Q3 ²	100.0	19.9	39.0	16.9	12.0	12.1
2015Q1 ²	100.0	27.4	32.9	14.2	13.8	11.7
2015Q2 ²	100.0	17.0	44.9	14.6	15.4	8.1
2015Q3 ²	100.0	21.7	42.1	12.9	10.7	12.5

**TABLE 9B - HISTORICAL TABLE OF CURRENTLY UNEMPLOYED PERSONS BY AGE GROUPS
(PERCENTAGE) - FEMALE**

YEAR	TOTAL	AGE GROUPS				
		15 - 19 YRS	20 - 24 YRS	25 - 29 YRS	30 - 39 YRS	40+ YRS
2008 ¹	100.0	12.9	38.9	23.2	17.0	8.0
2009 ¹	100.0	11.5	38.5	23.5	17.5	9.0
2010 ¹	100.0	10.7	36.5	26.1	17.4	9.3
2011 ²	100.0	9.3	40.7	23.4	17.5	9.1
2012 ²	100.0	9.4	39.8	20.3	18.6	11.9
2013 ²	100.0	10.9	38.3	20.3	18.3	12.2
2014 ²	100.0	9.0	42.0	20.2	18.4	10.4
2013Q3 ²	100.0	9.1	34.4	22.1	20.0	14.4
2014Q3 ²	100.0	8.0	42.7	20.6	15.8	12.9
2015Q1 ²	100.0	10.9	40.5	21.5	15.8	11.3
2015Q2 ²	100.0	9.8	36.5	25.6	14.9	13.2
2015Q3 ²	100.0	6.9	38.5	22.7	18.4	13.6

These figures are to be treated with caution as the corresponding CV (Coefficient of variation) values are high.

¹ - Excluding Northern province

² - All the districts are included

TABLE 10 - HISTORICAL TABLE OF CURRENTLY UNEMPLOYED PERSONS BY LEVEL OF EDUCATION (PERCENTAGE) - BOTH SEXES

YEAR	TOTAL	LEVEL OF EDUCATION			
		GRADE 5 & BELOW	GRADES 6 - 10	GCE(O/L) NCGE	GCE(A/L) HNCE & ABOVE
2008 ¹	100.0	4.5	39.3	23.4	32.8
2009 ¹	100.0	4.3	39.9	23.1	32.7
2010 ¹	100.0	2.7	34.9	22.7	39.7
2011 ²	100.0	2.7	37.9	19.9	39.4
2012 ²	100.0	2.6	37.4	27.3	32.8
2013 ²	100.0	3.9	36.5	22.1	37.4
2014 ²	100.0	3.2	37.9	22.4	36.5
2013Q3 ²	100.0	3.5	40.2	26.0	30.3
2014Q3 ²	100.0	1.1	44.1	20.4	34.3
2015Q1 ²	100.0	2.9	33.3	24.2	39.7
2015Q2 ²	100.0	1.9	34.7	25.0	38.3
2015Q3 ²	100.0	3.1	34.1	24.6	38.3

TABLE 10A - HISTORICAL TABLE OF CURRENTLY UNEMPLOYED PERSONS BY LEVEL OF EDUCATION (PERCENTAGE) - MALE

YEAR	TOTAL	LEVEL OF EDUCATION			
		GRADE 5 & BELOW	GRADES 6 - 10	GCE(O/L) NCGE	GCE(A/L) HNCE & ABOVE
2008 ¹	100.0	5.3	49.7	23.1	21.9
2009 ¹	100.0	4.4	48.0	25.3	22.3
2010 ¹	100.0	3.4	40.4	25.4	30.9
2011 ²	100.0	2.0	47.6	20.4	29.9
2012 ²	100.0	2.0	46.8	29.7	21.5
2013 ²	100.0	4.6	43.6	24.3	27.5
2014 ²	100.0	3.1	48.3	22.9	25.7
2013Q3 ²	100.0	3.6	47.2	27.2	22.0
2014Q3 ²	100.0	..	55.0	17.4	27.5
2015Q1 ²	100.0	1.9	44.7	28.4	25.1
2015Q2 ²	100.0	1.9	46.2	33.0	18.8
2015Q3 ²	100.0	1.8	41.8	31.6	24.8

.. Negligible

TABLE 10B - HISTORICAL TABLE OF CURRENTLY UNEMPLOYED PERSONS BY LEVEL OF EDUCATION (PERCENTAGE) - FEMALE

YEAR	TOTAL	LEVEL OF EDUCATION			
		GRADE 5 & BELOW	GRADES 6 - 10	GCE(O/L) NCGE	GCE(A/L) HNCE & ABOVE
2008 ¹	100.0	3.8	30.9	23.7	41.7
2009 ¹	100.0	4.3	32.5	21.1	42.1
2010 ¹	100.0	2.1	30.1	20.5	47.3
2011 ²	100.0	3.3	30.7	19.5	46.5
2012 ²	100.0	3.0	28.8	25.1	43.1
2013 ²	100.0	3.2	30.4	20.3	46.1
2014 ²	100.0	3.2	28.5	22.1	46.2
2013Q3 ²	100.0	3.4	32.9	24.8	38.9
2014Q3 ²	100.0	2.3	32.7	23.6	41.4
2015Q1 ²	100.0	3.6	26.1	21.5	48.8
2015Q2 ²	100.0	2.0	26.2	19.1	52.8
2015Q3 ²	100.0	4.1	27.8	18.7	49.3

These figures are to be treated with caution as the corresponding CV (Coefficient of variation) values are high.

¹ - Excluding Northern province

² - All the districts are included

TABLE 11 - CURRENTLY UNEMPLOYED PERSONS BY SEX AND DURATION OF UNEMPLOYMENT

Sex	Total	Duration		
		Less than 6 months	6 to less than 12 months	12+ months
Both sexes	453,956	182,121	99,980	171,855
%	100.0	40.1	22.0	37.9
Male	204,682	95,655	42,975	66,053
%	100.0	46.7	21.0	32.3
Female	249,274	86,466	57,006	105,802
%	100.0	34.7	22.9	42.4

STANDARD ERROR AND COEFFICIENT OF VARIATION OF SELECTED VARIABLES

 (2015 3rd Quarter)

	Estimated Value	Standard Error	Coefficient of Variation (%)	Estimated Value (Ratio)	Standard Error	Coefficient of Variation (%)
General labour force characteristics						
Population (15 years & over)	16,742,309	149,640	0.9			
Employed Population	8,554,179	108,887	1.3			
Unemployed Population	453,956	26,638	5.9			
Employment Rate				95.0	0.289	0.304
Unemployment Rate				5.0	0.289	5.732
Labour Force	9,008,135	111,434	1.2			
Not in Labour Force	7,734,175	112,885	1.5			
Employed persons by major industry Groups						
1	2,339,633	92,759	4.0			
2	79,554	15,289	19.2			
3	1,635,878	60,757	3.7			
6	609,884	31,178	5.1			
7	1,206,774	51,881	4.3			
8	522,382	28,620	5.5			
9	233,293	21,586	9.3			
10	48,313	8,531	17.7			
11	152,905	14,957	9.8			
13	71,119	9,827	13.8			
14	135,242	14,737	10.9			
15	626,612	36,602	5.8			
16	355,227	24,206	6.8			
17	137,436	15,124	11.0			
19	172,574	18,508	10.7			
20	174,308	20,482	11.8			
Other	53,045	10,589	20.0			
Unemployed persons by level of education						
Below grade 5	13,935	4,576	32.8			
Grade 5 - 9/Year 6 - 10	154,703	15,798	10.2			
G.C.E.(O/L)/N.C.G.E.	111,466	13,095	11.7			
G.C.E.(A/L)/H.N.C.E. & above	173,853	14,832	8.5			
Industry group						
1	Agriculture, forestry and fishing (A)					
2	Mining & quarrying (B)					
3	Manufacturing (C)					
6	Construction, Electricity, gas, steam and air conditioning supply, Water supply, sewerage, waste management and remediation activities (D, E,F)					
7	Wholesale and retail trade, repair of motor vehicles and motor cycles(G)					
8	Transportation and storage (H)					
9	Accommodation and food services activities (I)					
10	Information and communication (J)					
11	Financial and insurance activities (K)					
13	Professional, scientific and technical activities (M)					
14	Administrative and support service activities (N)					
15	Public administration and defence compulsory social security (O)					
16	Education (P)					
17	Human health and social work activities (Q)					
19	Other service activities (S)					
20	Activities of households as employers; undifferentiated goods and services - producing activities of households for own use (T)					
Other	Other Real estate activities (L) Arts, entertainment and recreation (R) Activities of extra territorial organizations & bodies (U)					

Special Statistical Appendix

EXPLANATORY NOTES

Coverage

Sri Lanka Labour Force Survey was designed to measure the levels and trends of employment, unemployment and labour force in Sri Lanka. This survey is being conducted quarterly, since the first quarter of 1990.

This quarterly survey of households is conducted through a scientifically selected sample designed to represent the civilian non-institutional population. Respondents are interviewed to obtain information about the employment status etc. of each member of the household 15 years of age and older.

The field work of the survey is done during the third week of each month, Monday through Sunday. This is known as the "survey week". The inquiry relates to activity or status are referred in the preceding week of the survey week; referred to as the "reference week".

The concepts and definitions underlying labour force data are as follows.

Concepts & Definitions

1. **Labour force:** The labour force is composed of the economically active population 15 years of age and over.
2. **The Economically Active Population:** is defined as those persons who are/were employed or unemployed during the reference period of the survey.
3. **Employed:** Persons, who during the reference period, worked as paid employees, employers, own account workers (self employed), or unpaid family workers are said to be employed. This includes persons with a job but not at work during the reference period.
4. **Unemployed:** Persons who are seeking and available for work, but had no employment during the reference period.
5. **Currently Economically Active:** A person who was employed or unemployed during the current reference period is considered to be currently economically active.
6. **Not in the Labour Force (not economically active):** Persons who were neither working nor available/looking for work are classified as "not in the labour force". Persons are not in the labour force for such reasons as: full time care of the household, full – time students, retired or old age, infirmed or disabled, or are not interested in working for one reason or another. Current and Usual definitions apply.
7. **Criteria for classification of underemployment:** In order to classify an employed persons as visibly underemployed,

(i) If the person has worked less than the normal duration in his/her main activity

In Sri Lanka scenario, 35 hours per week is taken as the cut-off point applicable to all workers, except government teachers. As in practice, though teachers do have a normal duration of work which is below the general cut-off point, they should be on a full time schedule according to the nature of their job. Further, those who do have a secondary job or those who are employers, were considered as having worked the normal duration in their respective activity.

Therefore, if the person has worked less than the normal duration in his/her activity (as described above), then the person is further questioned to ascertain whether he/She is prepared and available for further work if provided. Such persons are considered underemployed in their respective employment.

(ii) If the person has worked more than the normal duration in his/her activity

If the person has worked even more than 35 hours as usually, but he has worked less than 35 hours actually in the reference period, only due to the off season or bad weather, such persons were also further questioned to check their underemployment situation, considering them as a special category.

8. Informal Sector Employment

In order to classify a person to be employed in informal sector employment, following information were used.

- (i) Registration of the organization
- (ii) Accounts keeping practices of the organization
- (iii) Total number of regular employees of the organization.

Reliability of the estimates

Statistics based on the quarterly labour force data are subject to both sampling and non - sampling errors. When a sample rather than the entire population is surveyed, there is a chance that the sample estimates may differ from the "true" population values they represent.

The exact differences or sampling error, varies depending on the particular sample selected, and this variability is measured by the standard error of the estimate. There is about a 95 percent chance, or level of confidence, that an estimate based on a sample will differ by no more than 1.96 standard errors from the " true" population value, because of sampling error. Analyses relating to the Labour Force Survey are generally conducted at the 95 percent level of confidence.

For example, the confidence interval for the quarterly unemployment rate is on the order of

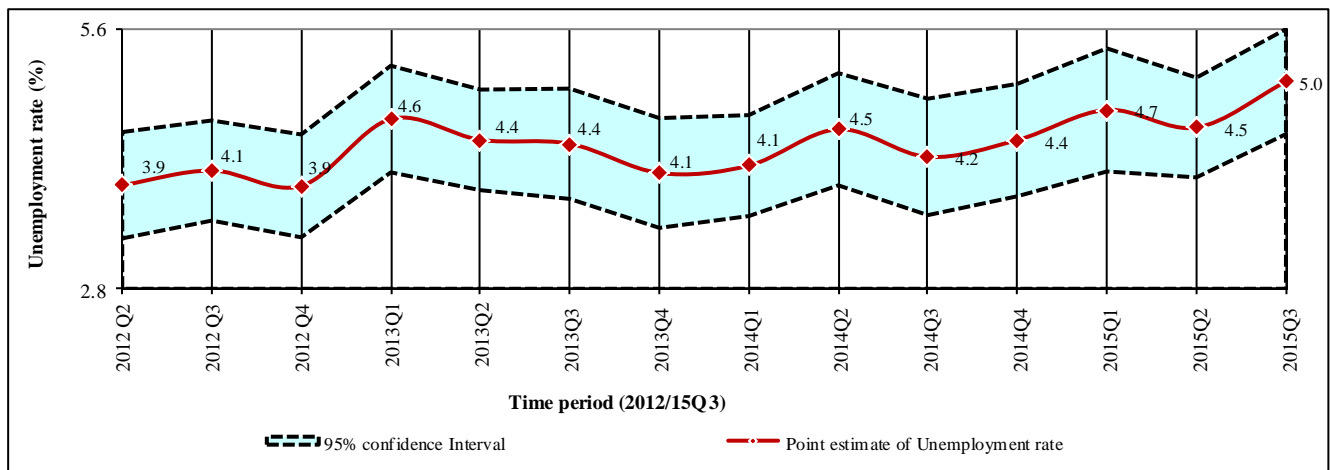
Estimated value *(of the unemployment rate)* \pm (standard error) * (1.96)

$$4.5 \pm (0.275) * (1.96)$$
$$(4.5 \pm 0.539)$$

This means, the 95 percent confidence interval on the quarterly unemployment rate could range from (5.6 to 7.2) . This implies that there is about 95 percent chance that the "true" unemployment rate lies within this interval. This range includes all the values range from 5.6 to 7.2. When the comparison of this estimate is done between two quarters, if any of the value within the 95 percent confidence interval of one quarter overlaps with the confidence interval of the other , it means that the estimates of this two quarters *are not significantly different*.

Therefore, in each quarterly labour force report, a separate table is given including approximate standard errors for some selected variables, so that users could understand this statistical scenario clearly.

Distribution of unemployment rates and 95% confidence intervals (2012Q2 - 2015Q3)



Note:

- * Survey was not conducted in the fourth quarter 2011 & first quarter 2012 due to activities of population census.

As seen in figure 2, it is very important to note that, there were no statistically significant differences between the unemployment rates reported in different time periods of 2011/2015, when sampling error was considered.

Change in survey schedule

Current survey concepts and methods are very similar to those introduced at the beginning of the survey in 1990. However, some changes have been made over the years to improve the accuracy and usefulness of the data. In January 2006, some improvements were made to the labour force survey schedule in order to fulfill the requirements of data users and also to provide additional information for planning purposes. The revision was made focusing on literacy, household economic activities, and informal sector employment and under employment etc.

From January , 2013 onwards, the lower bound of working age populations is considered as age 15, hence age 15 and over population is considered as working age population. The survey schedule is updated to obtain more precise information on following age, informal employment, informal sector, secondary occupation, wages & income , unemployment & trainings.

New Industry & Occupation classifications

From January 2013 onward the survey uses new industry & occupation classifications, such as

SLIC Rev 4:- Sri Lanka Standard Industry Classification based on International Standard Industry classification - Rev.4 (ISIC Rev 4)

SLSCO 08:- Sri Lanka Standard Classification of Occupation -2008 based on International Standard Classification of Occupation-2008 (ISCO 2008)

Note :

It is important to note that, all the data published here are the estimates based on a sample survey and these are subject to sampling errors. These sampling errors can be statistically evaluated from the survey results. Therefore, sampling error is normally measured in terms of the standard error of the particular variable. Standard error could be used to calculate the confidence limits with a prescribed accuracy where the true value of the estimates lies.

Further reliability of the estimates can be expressed in terms of Coefficient of Variation (CV). The CV is a relative measure of the sampling error and is calculated as sampling error divided by the expected value of the given characteristic.

In view of this, following table is given to show the estimates for some selected variables, it's standard error, CV and 95% Confidence interval.

It is also important to note that all the estimates we publish in this report are subject to sampling error and one should be cautious in the interpretation of results, especially with respect to the trends over time.

Estimate of Confidence Intervals for some selected characteristics

Year	Labour Force					Employed				
	No.	Standard error	C.V (%)	95% C.I.		No.	Standard error	C.V (%)	95% C.I.	
				Lower	Upper				Lower	Upper
2008 ¹	8,061,725	109,709	1.36	7,846,618	8,276,832	7,628,683	104,306	1.37	7,424,169	7,833,196
2009 ¹	8,051,089	107,213	1.33	7,840,876	8,261,302	7,579,835	102,161	1.35	7,379,527	7,780,143
2010 ¹	8,096,477	110,375	1.36	7,880,065	8,312,889	7,696,142	105,457	1.37	7,489,372	7,902,913
2011 ²	8,543,776	163,523	1.91	8,223,154	8,864,397	8,186,305	157,067	1.92	7,878,342	8,494,268
2012 ²	8,454,364	144,233	1.71	8,171,566	8,737,162	8,118,362	138,850	1.71	7,846,117	8,390,606
2013 ²	8,802,113	61,249	0.70	8,682,006	8,922,219	8,417,674	59,454	0.71	8,301,087	8,534,261
2014 ²	8,804,548	66,560	0.76	8,674,027	8,935,069	8,423,994	63,803	0.76	8,298,880	8,549,107
2013Q3 ²	8,809,150	123,387	1.40	8,566,799	9,051,502	8,424,409	119,660	1.42	8,189,377	8,659,441
2014Q3 ²	8,853,951	134,556	1.52	8,589,660	9,118,242	8,479,829	131,427	1.55	8,221,683	8,737,975
2015Q1 ²	8,924,716	122,426	1.37	8,684,252	9,165,180	8,502,270	116,189	1.37	8,274,057	8,730,483
2015Q2 ²	9,009,970	110,545	1.23	8,792,840	9,227,100	8,600,629	107,313	1.25	8,389,847	8,811,410
2015Q3 ²	9,008,135	111,434	1.24	8,789,259	9,227,010	8,554,179	108,887	1.27	8,340,306	8,768,051

Year	Unemployed					Unemployment Rate				
	No.	Standard error	C.V (%)	95% C.I.		Rate	Standard error	C.V (%)	95% C.I.	
				Lower	Upper				Lower	Upper
2008 ¹	433,042	14,975	3.46	403,680	462,405	5.4	0.2	3.14	5.0	5.7
2009 ¹	471,254	15,683	3.33	440,503	502,004	5.9	0.2	3.07	5.5	6.2
2010 ¹	400,335	14,742	3.68	371,430	429,240	4.9	0.2	3.39	4.6	5.3
2011 ²	357,471	17,726	4.96	322,715	392,226	4.2	0.2	4.52	3.8	4.6
2012 ²	336,002	15,267	4.54	306,067	365,938	4.0	0.2	4.17	3.6	4.3
2013 ²	384,439	13,218	3.44	358,519	410,359	4.4	0.1	3.34	4.1	4.7
2014 ²	380,554	13,974	3.67	353,152	407,956	4.3	0.2	3.52	4.0	4.6
2013Q3 ²	384,741	27,546	7.2	330,636	438,847	4.4	0.3	6.95	3.8	5.0
2014Q3 ²	374,122	29,042	7.8	317,078	431,166	4.2	0.3	7.58	3.6	4.9
2015Q1 ²	422,446	31,595	7.48	360,389	484,503	4.7	0.3	7.16	4.1	5.4
2015Q2 ²	409,341	25,457	6.22	359,339	459,343	4.5	0.3	6.04	4.0	5.1
2015Q3 ²	453,956	26,638	5.87	401,634	506,278	5.0	0.3	5.73	4.5	5.6

¹ - Excluding Northern provinces² - All the districts are included

ALTERNATIVE ESTIMATES

Alternative Estimates of Employment, Unemployment and Labour Force Characteristics

Official employment, unemployment and labour force characteristics are estimated at the Sri Lanka Labour Force Survey, based on the internationally comparable concepts and definitions recommended by the ILO. However the validity of the concepts and definitions used at the survey is questioned very often in some forums, for the appropriateness of these concepts and definitions in the Sri Lankan context.

The concepts and definitions, which were found to be controversial, are as below.

- (1) **Number of Hours of Work** : A person who work **at least one hour** during the reference week, is considered **employed**, under these definitions.
- (2) **Working Age Population** : All persons of **age 10 years and over** are considered to be in the working age, before 2013. However, this was changed as age 15 and over from 2013 onward.
- (3) **Employment Status** : All,
 - a) Paid employees, (those who work for wages/salaries).
 - b) Employers (who have at least one paid employee under them).
 - c) Own account workers (who carry out the economic activity without having anypaid employees).
 - d) Contributing family workers (who make their contribution to the economic activities carried out by their own household, without wages/salaries).

The validity of the above concepts and definitions is raised due to the following reasons.

- (1) **Number of Hours of Work** : Some pointed out that one hour per week is too low, to consider a person to be employed.
- (2) **Working Age Population** : Some pointed out those persons in the age group 10-14 yrs. are too young to be considered in the working age. (From 2013 onward the working age population is considered as age 15 and over).
- (3) **Employment Status** : Some pointed out that 'contributing family workers' may work in the family enterprise without payment because they have no other work, and so it is not appropriate to consider them as employed.

An attempt has been made to produce '**Alternative estimates of Employment, Unemployment and Labour Force Characteristics,**' by revising the original concepts and definitions so that the above issues are addressed as explained below.

The revisions made are,

- (1) **Number of Hours of Work** : Persons who work **20 hours or more per week only** are considered to be employed.
- (2) **Contributing Family Worker** : Contributing family workers are **not** considered as employed. Those contributing family workers who were reported to be seeking some other work are considered as **unemployed** and the rest of the unpaid family workers are considered as **economically inactive** (not in the labour force) so only, **a) paid employees b) employers and c) own account workers are considered to be employed.**

Following tables are based on the above alternative concepts and definitions.

Alternative Estimates of Employment, Unemployment and Labour Force Characteristics

TABLE 1 - LABOUR FORCE STATUS OF HOUSEHOLD POPULATION 15 YEARS & OVER (ALTERNATIVE ESTIMATES)

YEAR	HOUSEHOLD POPULATION (15 YEARS & OVER)	TOTAL LABOUR FORCE	LABOUR FORCE PARTICI: RATE(%)	LABOUR FORCE				NOT IN LABOUR FORCE NUMBER
				EMPLOYED		UNEMPLOYED		
				NUMBER	RATE (% TO TOTAL LABOUR FORCE)	NUMBER	RATE (% TO TOTAL LABOUR FORCE)	
2008 ¹	14,626,581	6,859,040	46.9	6,425,997	93.7	433,042	6.3	7,767,541
2009 ¹	14,876,264	6,836,598	46.0	6,365,344	93.1	471,254	6.9	8,039,665
2010 ¹	15,166,285	6,892,444	45.4	6,492,109	94.2	400,335	5.8	8,273,841
2011 ²	16,122,111	7,196,558	44.6	6,839,087	95.0	357,471	5.0	8,925,553
2012 ²	16,081,285	7,417,834	46.1	7,081,831	95.5	336,002	4.5	8,663,451
2013 ²	16,359,761	7,619,111	46.6	7,234,672	95.0	384,439	5.0	8,740,650
2014 ²	16,531,768	7,676,101	46.4	7,295,546	95.0	380,554	5.0	8,855,668
2013Q3 ²	16,360,533	7,647,996	46.7	7,263,255	95.0	384,741	5.0	8,712,536
2014Q3 ²	16,645,617	7,760,707	46.6	7,386,585	95.2	374,122	4.8	8,884,910
2015Q1 ²	16,638,339	7,838,029	47.1	7,415,584	94.6	422,446	5.4	8,800,309
2015Q2 ²	16,596,533	7,768,676	46.8	7,359,335	94.7	409,341	5.3	8,827,857
2015Q3 ²	16,742,309	7,826,194	46.7	7,372,238	94.2	453,956	5.8	8,916,115

TABLE 2 - HISTORICAL TABLE OF NUMBER AND RATE OF UNEMPLOYMENT BY AGE (ALTERNATIVE ESTIMATES)

YEAR	AGE GROUP											
	TOTAL		15 - 19		20 - 24		25 - 29		30 - 39		40 & ABOVE	
	NO.	RATE	NO.	RATE	NO.	RATE	NO.	RATE	NO.	RATE	NO.	RATE
2008 ¹	433,042	6.3	68,487	27.1	166,409	20.8	93,202	10.9	58,838	3.6	46,107	1.4
2009 ¹	471,254	6.9	68,447	27.3	176,801	24.9	100,508	11.9	70,988	4.2	54,511	1.6
2010 ¹	400,335	5.8	59,339	26.5	154,788	22.5	84,777	10.5	59,041	3.6	42,390	1.2
2011 ²	357,471	5.0	45,900	21.0	151,882	20.7	73,545	8.7	55,880	3.2	30,263	0.8
2012 ²	336,056	4.5	47,690	23.6	136,553	19.5	63,135	7.3	52,541	2.8	36,084	1.0
2013 ²	384,439	5.0	52,652	22.9	157,353	21.7	69,413	8.5	58,352	3.1	46,669	1.2
2014 ²	380,615	5.0	54,300	25.9	151,742	22.2	73,421	9.3	57,906	3.0	43,185	1.1
2013Q3 ²	384,741	5.0	56,049	22.8	140,068	18.7	70,920	9.2	62,104	3.4	55,600	1.4
2014Q3 ²	374,122	4.8	52,713	25.8	152,728	23.4	70,033	9.1	51,832	2.6	46,816	1.1
2015Q1 ²	422,446	5.4	72,818	29.3	158,869	22.7	78,801	9.6	63,540	3.3	48,417	1.2
2015Q2 ²	409,341	5.3	52,674	25.7	163,952	24.2	85,724	10.3	61,855	3.1	45,136	1.1
2015Q3 ²	453,956	5.8	61,654	33.1	182,133	24.3	82,902	9.9	67,778	3.6	59,489	1.4

¹- Excluding Northern province² - All the districts are included

Table 3 - Currently Employed persons by Industry group (No. and percentage) (Based on ISIC Fourth Revision) - (Alternative estimates)

Year	Industry group																		
	Total	1	2	3	6	7	8	9	10	11	13	14	15	16	17	19	20	Other	
2013	No.	7,234,672	1,797,192	92,742	1,360,236	561,214	989,320	499,257	160,616	59,656	151,882	64,976	103,930	620,201	305,115	136,759	116,217	170,324	45,035
	%	100.0	24.8	1.3	18.8	7.8	13.7	6.9	2.2	0.8	2.1	0.9	1.4	8.6	4.2	1.9	1.6	2.4	0.6
2014	No.	7,295,546	1,716,094	74,133	1,396,819	579,647	970,132	510,933	175,533	66,645	157,549	49,443	109,006	637,806	319,326	135,245	135,982	204,541	56,715
	%	100.0	23.5	1.0	19.1	7.9	13.3	7.0	2.4	0.9	2.2	0.7	1.5	8.7	4.4	1.9	1.9	2.8	0.8
2013Q3	No.	7,263,255	1,734,209	96,760	1,377,051	540,332	988,418	462,086	158,859	73,408	167,329	70,069	109,725	622,506	351,809	144,717	112,400	210,986	42,589
	%	100.0	23.9	1.3	19.0	7.4	13.6	6.4	2.2	1.0	2.3	1.0	1.5	8.6	4.8	2.0	1.5	2.9	0.6
2014Q3	No.	7,386,585	1,761,362	89,493	1,391,596	613,641	993,541	551,062	188,890	53,217	151,747	39,266	105,323	663,141	287,227	120,909	147,317	166,061	62,793
	%	100.0	23.8	1.2	18.8	8.3	13.5	7.5	2.6	0.7	2.1	0.5	1.4	9.0	3.9	1.6	2.0	2.2	0.9
2015Q1	No.	7,415,584	1,812,189	79,101	1,422,450	549,459	1,003,333	508,642	175,489	59,362	153,395	60,394	122,615	669,872	270,824	130,546	136,674	199,113	62,127
	%	100.0	24.4	1.1	19.2	7.4	13.5	6.9	2.4	0.8	2.1	0.8	1.7	9.0	3.7	1.8	1.8	2.7	0.8
2015Q2	No.	7,359,335	1,739,275	37,715	1,376,727	572,636	939,485	503,050	181,732	59,123	164,580	64,885	133,071	661,235	371,554	137,363	154,186	191,603	71,114
	%	100.0	23.6	0.5	18.7	7.8	12.8	6.8	2.5	0.8	2.2	0.9	1.8	9.0	5.0	1.9	2.1	2.6	1.0
2015Q3	No.	7,372,238	1,650,625	76,287	1,472,014	581,189	1,034,998	510,351	202,059	45,549	150,430	67,722	130,244	623,160	333,165	136,608	144,690	163,127	50,021
	%	100.0	22.4	1.0	20.0	7.9	14.0	6.9	2.7	0.6	2.0	0.9	1.8	8.5	4.5	1.9	2.0	2.2	0.7

Note: The tabulation groups based on ISIC (Rev.4) are indicated as A,B,C.....U. Due to the limitations on reliability (based on CV),some of these groups have been combined.

Industry Group

1 Agriculture, forestry and fishing (A)

2 Mining & quarrying (B)

3 Manufacturing (C)

6 Construction, Electricity, gas, steam and air conditioning supply, Water supply, sewerage, waste management and remediation activities (D, E,F)

7 Wholesale and retail trade, repair of motor vehicles and motor cycles(G)

8 Transportation and storage (H)

9 Accommodation and food services activities (I)

10 Information and communication (J)

11 Financial and insurance activities (K)

13 Professional, scientific and technical activities (M)

14 Administrative and support service activities (N)

15 Public administration and defence compulsory social security (O)

16 Education (P)

17 Human health and social work activities (Q)

19 Other service activities (S)

20 Activities of households as employers; undifferentiated goods and services - producing activities of households for own use (T)

Other

Other

12 Real estate activities (L)

18 Arts, entertainment and recreation (R)

21 Activities of extra territorial organizations & bodies (U)