



**QUARTERLY REPORT OF THE
SRI LANKA LABOUR FORCE
SURVEY**

Quarterly Report – 2015

Second Quarter

**DEPARTMENT OF CENSUS & STATISTICS
MINISTRY OF NATIONAL POLICIES AND ECONOMIC
AFFAIRS**

ISBN 978 – 955 – 577 – 956 - 2

Preface

In the past, information on labour force characteristics, employment and unemployment etc. were collected through labour force and socio - economic surveys conducted at five yearly time intervals. However, the employment and unemployment data are required at very short intervals to monitor the programs made in the employment generating policies of the government. Therefore, to satisfy this need, the Department of Census and Statistics (DCS) designed a labour force survey on a quarterly basis, to measure the levels and trends of employment, unemployment and labour force in Sri Lanka on a continuous basis. This survey was commenced from the first quarter of 1990 and this report is the ninety fourth in the series of quarterly reports published so far.

Current survey concepts and methods are very similar to those introduced at the beginning of the survey in 1990. However, some changes were made over the years to improve the accuracy and usefulness of the data. The significant revisions were made on the labour force survey questionnaire in 1996, 2006 and the latest revision was in 2013. The revised version was introduced for the survey conducted in 2013 First quarter, and this report consists with statistics using new concepts and classifications.

The field work of the survey for the second quarter 2015 was done in April, May and June in year 2015. This survey covered the whole country. A nationally representative annual sample of about 25,000 housing units have been selected for the survey in 2015. This report is based on a quarterly sample of 6,250 housing units.

*Dr. A.J. Satharasinghe
Director General of Census & Statistics*

*Department of Census & Statistics,
"Sankhyana Mandiraya",
306/71,
Polduwa Road,
Baththaramulla
19.10.2015.*

Acknowledgements

This report is ninety fourth in the series of the Quarterly Labour Force Survey which was commenced from the first quarter 1990 and is being continued by the Department of the Census and statistics.

Planning and execution of the survey was done by staff of the Sample Survey Division under the direction of Mr. H.R.Dias, Director, Sample Surveys Division and Mr. M.D. Sunil Senanayake Deputy Director, Sample Surveys Division.

The survey activities were organized and supervised by Mrs. W.A.C.Wijebandara, Mr. K.S.R.L.Senadeera, Mrs. M.D.D.D.Deepawansa, Mrs. C.Jayawickrama, Mr. A.K.D.C.N.S.Karunarathna, Mr. K.Weerasiri, Mrs. U.S.Dilrukshi, Mr. M.L.K.P.Kumara, Ms. M.W.L.C.M. Chandrarathne Statisticians & Senior Statistician, of the sample surveys division and Heads of statistics divisions in each district.

The computer data processing and final tabulations were done by Mrs. W.A.S.M.P. Gunasekara, Mr. A.M.A.E.Atapattu, Statistical Officers and Mrs. A.N. Ekanayake, Statistical Assistant of the Sample Surveys Division, under the supervision of Mrs. W.A.C.Wijebandara, Statistician using Microcomputers. The statistical officers, statistical assistants, Information and Communication Technology assistants, Data Entry Officer/Coding clerks and development officers (iii), of the sample survey division are acknowledged for their valuable contribution during the whole survey process.

Developing of sample selection programme and its related computer software was done by Mr. K.M.R. Wickramasinghe, AD (ICT).

This publication was organized and prepared by Mrs. W.A.C. Wijebandara and Mr. A.K.D.C.N.S.Karunarathna Statisticians, Sample Surveys Division, assisted by Mrs. W.A.S.M.P. Gunasekara, Mr. A.M.A.E.Atapattu, Statistical officers. Mr. M.G. Perera, Statistical officer and Mrs. Asanthi Ekanayaka, Statistical Assistant assisted at the editing stage.

The Information & Communication Technology Division, under the direction of Mr. S.A.S. Bandulasena, Additional Director General (ICT) and under the supervision of Mr. P.M.R.Fernando, Deputy Director (ICT) and Mr. W.H.P.N. Weerasiri Deputy Director (ICT), was responsible for the survey data entry and preparation of data entry and computer edits programmes. Data entry was decentralized and manual editing, coding & data entry were done by responsible officers at district office at kachcheries in all districts.

District field staff of the Department who worked on the survey deserves a special word of thanks. They include District Deputy Directors/ Senior Statisticians/ Statisticians for supervision and field Statistical Officers, who worked hard at the data collection stage, to make this survey a success. Printing of the report was done at the staff of Printing Division, under the supervision of Mr. M.J.M Fernando, Statistician.

Finally, I wish to express my appreciation to all the respondents of the survey for their valuable cooperation.

Sri Lanka Labour Force Survey
Summary Statistics on Labour Force Characteristics
2015 2nd Quarter
(All Island)

15 years & over population

	Total	Male	Female	Urban	Rural
Population (15 years & over)	16,596,533	7,657,435	8,939,097	2,839,669	13,756,864
Labour force in this age group	9,009,970	5,726,609	3,283,361	1,404,499	7,605,471
Labour force participation rate	54.3	74.8	36.7	49.5	55.3
Employed population	8,600,629	5,552,614	3,048,015	1,335,019	7,265,610
Employment rate	95.5	97.0	92.8	95.1	95.5
Unemployed population	409,341	173,995	235,347	69,480	339,861
Unemployment rate	4.5	3.0	7.2	4.9	4.5
Not in labour force	7,586,563	1,930,826	5,655,736	1,435,169	6,151,393

20 years & over population

	Total	Male	Female	Urban	Rural
Population (20 years & over)	14,943,085	6,843,422	8,099,663	2,559,445	12,383,640
Labour force in this age group	8,767,508	5,564,635	3,202,873	1,375,691	7,391,816
Labour force participation rate	58.7	81.3	39.5	53.7	59.7
Employed population	8,410,840	5,420,150	2,990,690	1,310,682	7,100,158
Employment rate	95.9	97.4	93.4	95.3	96.1
Unemployed population	356,667	144,485	212,183	65,009	291,658
Unemployment rate	4.1	2.6	6.6	4.7	3.9
Not in labour force	6,175,578	1,278,787	4,896,790	1,183,754	4,991,823

Selected Labour Force Indicators ...

Indicator	Year								
	2013*	2014*	2011**	2012**	2013**	2014**	2014Q2**	2015Q1**	2015Q2**
Labour force participation rate									
By Gender									
Total	54.2	53.6	53.0	52.6	53.8	53.3	53.6	53.6	54.3
Male	75.0	74.8	74.0	75.0	74.9	74.6	75.2	73.9	74.8
Female	36.3	35.2	34.4	32.9	35.6	34.7	34.8	36.4	36.7
By residential sector									
Total	54.2	53.6	53.0	52.6	53.8	53.3	53.6	53.6	54.3
Urban	48.0	49.0	47.8	48.4	47.8	48.9	50.2	46.4	49.5
Rural	55.5	54.6	53.8	53.5	55.0	54.2	54.2	55.1	55.3
Unemployment Rate									
By Gender									
Total	4.3	4.3	4.2	4.0	4.4	4.3	4.5	4.7	4.5
Male	3.2	3.1	2.7	2.8	3.2	3.1	3.4	2.9	3.0
Female	6.4	6.4	7.0	6.2	6.6	6.5	6.7	7.9	7.2
By selected age Group (Year)									
20 – 29	13.0	13.5	12.3	11.3	13.0	13.7	13.8	14.1	14.7
20 – 24	19.3	20.0	17.7	16.8	19.2	20	18.8	20.4	21.3
25 – 29	7.5	8.1	7.6	6.6	7.5	8.3	9.4	8.7	9.2
By selected educational level									
A/L & above									
Total	8.4	7.9	9.0	7.5	8.6	8.1	8.7	10.1	8.5
Male	5.6	5.1	5.4	4.5	5.7	5.3	5.7	5.3	3.7
Female	11.3	10.8	13.1	10.8	11.6	11.0	11.9	14.3	12.9
Employed population									
By Gender									
Total	8,070,542	8,071,126	8,186,305	8,118,362	8,417,674	8,423,994	8,413,171	8,502,270	8,600,629
Male	5,233,167	5,292,105	5,452,723	5,469,759	5,498,815	5,548,131	5,560,143	5,488,213	5,552,614
Female	2,837,375	2,779,021	2,733,582	2,648,603	2,918,859	2,875,862	2,853,028	3,014,057	3,048,015
By industry (Percentage)									
Total	8,070,542	8,071,126	8,186,305	8,118,362	8,417,674	8,423,994	8,413,171	8,502,270	8,600,629
%	100.0	100.0	100.0	100.0	100.0	100.0	100.0	100.0	100.0
Agriculture	2,390,884	2,290,367	2,699,244	2,513,673	2,504,310	2,399,629	2,368,845	2,500,322	2,443,301
%	29.6	28.4	33.0	31.0	29.8	28.5	28.2	29.4	28.4
Industry	2,125,376	2,149,674	1,976,711	2,117,286	2,202,159	2,229,810	2,189,738	2,200,481	2,206,211
%	26.3	26.6	24.1	26.1	26.2	26.5	26	25.9	25.7
Services	3,554,282	3,631,085	3,510,350	3,487,403	3,711,204	3,794,554	3,854,588	3,801,467	3,951,118
%	44.0	45.0	42.9	43.0	44.1	45.0	45.8	44.7	45.9
By no. of hours worked per week (percentage)									
Total	100.0	100.0	100.0	100.0	100.0	100.0	100.0	100.0	100.0
0#	5.2	5.2	5.2	4.5	5.2	5.2	9.8	2.0	10.4
1 – 9	1.8	1.3	1.7	1.2	1.8	1.3	1.7	1.0	2.3
10 – 39	27.0	27.0	29.9	26.0	27.4	27.5	33.7	25.4	30.7
40 & above	66.0	66.4	63.1	68.3	65.6	66.0	54.8	71.6	56.6

has a job but not at work during the reference week

* Excluding Northern Province

**Whole island covered

Note : Working age population considered as age 15 & over population

CONTENTS

	Page No.
Preface	iii
Acknowledgements	v
Highlights	vii
Summary Statistics	viii
Contents	ix
Labour Force	1
Employment	2
Unemployment	3
Tables	
Table No.	
1. Historical table of Labour Force Status (current) of the Household Population, 15 years of Age and over - Both Sexes	4
1A. Historical table of Labour Force Status (current) of the Household Population, 15 years of Age and over – Male	5
1B. Historical table of Labour Force Status (current) of the Household Population, 15 years of Age and over – Female	5
2. Labour Force Status (current) of the Household Population 15 years of Age and over, by Age - Both Sexes	6
2A. Labour Force Status (current) of the Household Population 15 years of Age and over, by Age – Male	7
2B. Labour Force Status (current) of the Household Population 15 years of Age and over, by Age – Female	7
3. Historical table of Currently Employed persons by Age Groups (percentage) - Both Sexes	8
3A. Historical table of Currently Employed persons by Age Groups (percentage) – Male	8
3B. Historical table of Currently Employed persons by Age Groups (percentage) – Female	8
4. Historical table of Currently Employed persons by Level of Education (percentage) - Both Sexes	9
4A. Historical table of Currently Employed persons by Level of Education (percentage) – Male	9
4B. Historical table of Currently Employed persons by Level of Education (percentage) – Female	9
5. Historical table of Currently Employed persons by Employment Status (percentage) - Both Sexes	10
5A. Historical table of Currently Employed persons by Employment Status (percentage) – Male	10
5B. Historical table of Currently Employed persons by Employment Status (percentage) – Female	10
6. Currently employed persons by Industry group (Based on ISIC Rev.4) – Both sexes	11
6A. Currently employed persons by Industry group (Based on ISIC Rev.4) – Male	12
6B. Currently employed persons by Industry group (Based on ISIC Rev.4) – Female	13
6C. Historical table of currently employed population by major industry group - Both sexes	14
6D. Historical table of currently employed population by major industry group (percentage) - Both sexes	14
7. Currently employed persons by Occupation group (Based on ISCO 08) - Both sexes	15
7A. Currently employed persons by Occupation group (Based on ISCO 08) – Male	16
7B. Currently employed persons by Occupation group (Based on ISCO 08) – Female	16
8. Currently Employed persons by hours per week actually worked at the main job and Major Industrial group (percentage) - Both Sexes	17
9. Historical table of Currently Unemployed persons by Age Groups (percentage) - Both Sexes	18
9A. Historical table of Currently Unemployed persons by Age Groups (percentage) – Male	18
9B. Historical table of Currently Unemployed persons by Age Groups (percentage) – Female	18
10. Historical table of Currently Unemployed persons by Level of Education (percentage) - Both Sexes	19
10A. Historical table of Currently Unemployed persons by Level of Education (percentage) – Male	19
10B. Historical table of Currently Unemployed persons by Level of Education (percentage) – Female	19
11. Currently Unemployed Persons by Sex and Duration of Unemployment	20
12. Standard error and coefficient of variation of selected variables	21

Appendix 1: Explanatory Notes

Appendix 2: Alternative estimates of employment, unemployment and labour force characteristics

Introduction

Highlights

- Labour force participation rate is 54.3% for the Second Quarter of 2015.
- Unemployment rate for the survey period is 4.5%.

Sri Lanka Labour Force Survey (LFS) is designed to measure the levels and trends of employment, unemployment and labour force in Sri Lanka. LFS has been conducted quarterly, since the first quarter of 1990.

The field work of the survey for the Second-quarter of 2015 was done in April, May and June covering the whole country.

Labour Force

This is the currently economically active population. Which is the number of persons (age 15 years & above) who are employed or unemployed during the reference week.

Labour force participation rate (LFPR)

Labour force population expressed as a percentage of the population, age 15 years and over.

Labour Force (Economically Active Population)

Table 1 : Economically active population by gender and sector – Second Quarter 2015

Sector	Economically active population					
	Total	%	Male	%	Female	%
Sri Lanka	9,009,970	100.0	5,726,609	63.6	3,283,361	36.4
Urban	1,404,499	100.0	940,644	67.0	463,855	33.0
Rural	7,240,467	100.0	4,574,477	63.2	2,665,990	36.8
Estate	365,004	100.0	211,487	57.9	153,517	42.1

According to the Table 1, the estimated economically active population is about 9.0 million in the Second quarter 2015. Of which 63.6 percent are males and 36.4 percent are females. Out of the economically inactive population 25.5 percent are males and 74.5 percent are females (Table 2) .

Inside

Labour Force	1
Employment	2
Unemployment	3
Selected Labour Force Indicators	4

Table 2 : Economically inactive population by gender and sector – Second Quarter 2015

Sector	Economically inactive population					
	Total	%	Male	%	Female	%
Sri Lanka	7,586,563	100.0	1,930,826	25.5	5,655,736	74.5
Urban	1,435,169	100.0	388,579	27.1	1,046,590	72.9
Rural	5,941,140	100.0	1,494,847	25.2	4,446,293	74.8
Estate	210,254	100.0	47,400	22.5	162,853	77.5

Table 4 : LFPR by age group and gender - Second Quarter 2015

Age group (Years)	Total	Male	Female
Sri Lanka	54.3	74.8	36.7
15 - 19	14.7	19.9	9.6
20 - 24	56.9	73.6	41.9
25 - 29	66.2	92.7	45.8
30 - 34	65.3	95.7	42.5
35 - 39	70.9	96.7	47.7
40 - 44	74.0	94.8	53.4
45 - 49	71.6	94.6	51.6
50 - 54	67.9	92.2	47.1
55 - 59	60.4	87.2	38.8
60+	31.3	47.5	18.0

Table 3 : LFPR by gender and year - All

Year	Total	Male	Female
2011	53.0	74.0	34.4
2012	52.6	75.0	32.9
2013	53.8	74.9	35.6
2014	53.3	74.6	34.7
2013 Q2	54.2	75.5	35.6
2014 Q2	53.6	75.2	34.8
2015 Q1	53.6	73.9	36.4
2015 Q2	54.3	74.8	36.7

Table 3 provides the information on LFPRs since year 2011. Referring the Table 3, It is important to note that, male participation to the labour force is always higher than that of females.

Considering the Table 4, the distribution of LFPR by age group and by gender depicts high male participation compared to female in all age groups. The highest participation rate for male was reported from age group 35–39 years (96.7%), while that for females was reported from the age group of 40 – 44 years (53.4%).

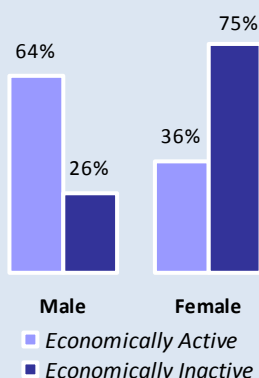


Figure 1 : Distribution of Economically active/Inactive population- Second quarter –2015

Definition of Employed

Persons, who worked at least one hour during the reference period, as paid employees, employers, own account workers or contributing family workers are said to be employed. This also includes persons with a job but not at work during the reference period.

Reference Period :

Previous week of the survey week

The Employment Rate

The proportion of employed population to the total labour force.

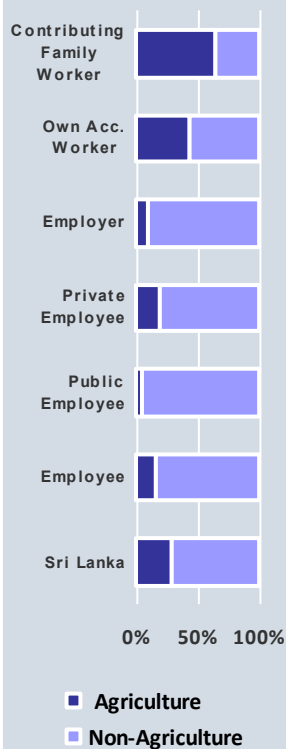


Figure 2: Distribution of employed population by employment status and Agriculture/Non-Agriculture sector- Second Quarter 2015

Employment ...

Table 5: Distribution of Employed population by main industry
(Second Quarter 2014 – Second Quarter 2015)

Quarter	Sri Lanka	Major Industry Group		
		Agriculture	Industries	Services
2014 Q2 (No.)	8,413,171	2,368,845	2,189,738	3,854,588
(%)	100.0	28.2	26.0	45.8
2014 Q3 (No.)	8,479,829	2,455,034	2,253,174	3,771,621
(%)	100.0	29.0	26.6	44.5
2014 Q4 (No.)	8,395,762	2,552,541	2,134,233	3,708,988
(%)	100.0	30.4	25.4	44.2
2015 Q1 (No.)	8,502,270	2,500,322	2,200,481	3,801,467
(%)	100.0	29.4	25.9	44.7
2015 Q2 (No.)	8,600,629	2,443,301	2,206,211	3,951,118
(%)	100.0	28.4	25.7	45.9

Table 5 shows the percentage distribution of employed population by main industry from Second quarter 2014 to Second quarter 2015. During Second quarter of 2015, the total number of employed persons in Sri Lanka is estimated as about 8.6 million. Of which, about 45.9 percent engaged in Services sector, 25.7 percent in Industries sector and 28.4 percent in Agriculture sector.

Table 6: Distribution of employed population by employment status and Agriculture/Non-Agriculture sector – Second Quarter 2015

Employment Status	Sri Lanka		Sector			
			Agriculture		Non-Agriculture	
	No.	%	No.	%	No.	%
Sri Lanka	8,600,629	100.0	2,443,301	28.4	6,157,328	71.6
Employee	4,941,399	100.0	782,151	15.8	4,159,248	84.2
Public	1,352,167	100.0	73,568	5.4	1,278,599	94.6
Private	3,589,232	100.0	708,583	19.7	2,880,649	80.3
Employer	263,925	100.0	25,768	9.8	238,157	90.2
Own Account Worker	2,756,665	100.0	1,219,432	44.2	1,537,232	55.8
Contributing Family	638,641	100.0	415,950	65.1	222,691	34.9

Table 7: Distribution of Employed population by main industry & gender – Second Quarter 2015

Major Industry Group	Sri Lanka	Gender	
		Male	Female
Sri Lanka	100.0	100.0	100.0
Agriculture	28.4	26.4	32.1
Industry	25.7	26.1	24.9
Services	45.9	47.5	43.1

Main industry categories and sub sectors

Agriculture

1. Agriculture Forestry and Fishery (A)

Industries

1. Mining & Quarrying (B)
2. Manufacturing (C)
3. Construction, Electricity, gas, steam and air conditioning supply, Water supply, sewerage, waste management and remediation activities (D, E, F)

Services

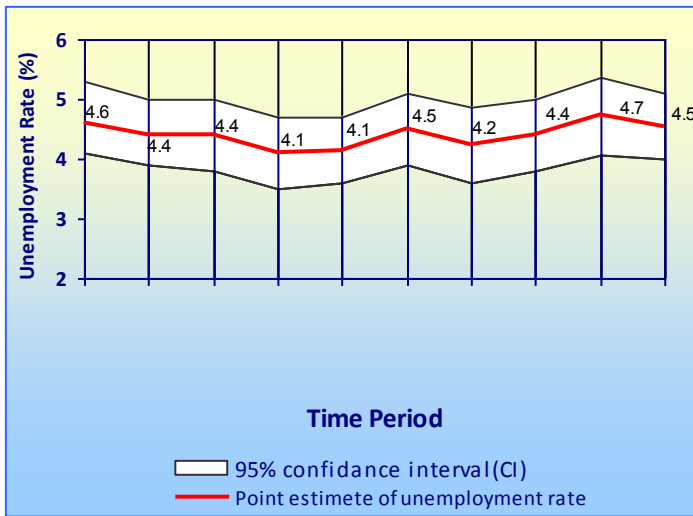
1. Wholesale and retail trade, repair of motor vehicles and motor cycles (G)
2. Transportation and storage (H)
3. Accommodation and food services activities (I)
4. Information and communication (J)
5. Financial and insurance activities (K)
6. Professional, scientific and technical activities (M)
7. Administrative and support service activities (N)
8. Public administration and defense compulsory social security (O)
9. Education (P)
10. Human health and social work activities (Q)
11. Other service activities (S)
12. Activities of households as employers; undifferentiated goods and services - producing activities of households for own use (T)
13. Real estate activities (L) Arts, entertainment and recreation (R) Activities of extra territorial organizations & bodies (U)

As seen in Figure 2 & Table 6 contributing family workers are highly concentrated in Agriculture sector.

Table 7 depicts the percentage distribution of male and female employed population by main industries. Highest employment share is in service sector and this is true for both male & female, while the lowest shares are for industry sector. Among employed females 32.1 percent is in agriculture sector while this share is 26.4 percent for males.

Unemployment ...

Figure 3: Unemployment rates and its 95% confidence intervals (2013Q1 - 2015Q1)



¹Sampling error : When a sample, rather than the entire population, is surveyed, estimates differ from the true population values they represent. This difference, or sampling error, occurs by chance, and its variability is measured by the sampling error of the estimate.

For more details, please refer the explanatory note given under the labour force link in the DCS website; www.statistics.gov.lk

Table 8: Unemployment rate by age group and gender – Second Quarter 2015

Age group (Years)	Sri Lanka	Gender	
		Male	Female
Sri Lanka	4.5	3.0	7.2
15–24	21.4	17.0	28.8
25–29	9.2	4.5	16.6
Over 30	1.5	0.9	2.6

These figures are to be treated with caution as the corresponding CV (Coefficient of variation) values are high.

As can be seen from Table 8, overall unemployment rate reported for female is 7.2 percent and it is 3.0 percent for male. Youth unemployment rate 15 – 24 years reported for the Second quarter 2015 is 21.4 percent and that reports the highest unemployment rate among all other age groups. Further rates for both males and females are 17.0 and 28.8 percent respectively for age group 15 – 24.

The survey results further revealed that the unemployment among females is higher than that of males, in all age groups. Youth and female unemployment contribute more to the overall unemployment of the country.

The highest unemployment rate is reported from the G.C.E (A/L) and above group which is about 8.5 percent. Corresponding percentages are 3.7 percent and 12.9 percent for males and females respectively. Female unemployment rates are higher than those of males in all levels of education.

Table 9: Unemployment rate by level of education – Second Quarter 2015

Level of Education	Unemployment Rate (%)		
	Sri Lanka	Male	Female
Sri Lanka	4.5	3.0	7.2
Below GCE O/L	2.7	2.2	3.7
GCE O/L	6.3	5.3	8.2
GCE A/L & above	8.5	3.7	12.9

This further shows that the problem of unemployment is more acute in the case of educated females than educated males, which has been seen the same picture in previous survey results.

Definition of Unemployed

Persons available and/or looking for work, and who did not work and taken steps to find a job during last four weeks and ready to accept a job given a work opportunity within next two weeks are said to be unemployed.

The Unemployment Rate

The proportion of unemployed population to the total labour force.

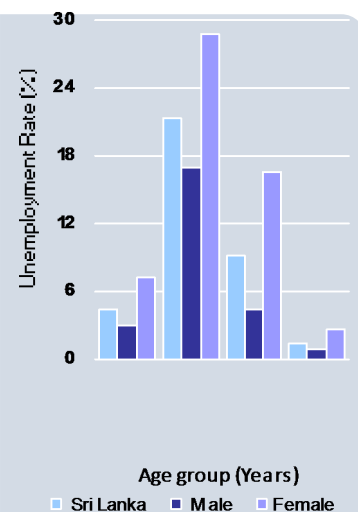


Figure 3: Unemployment rate by age group and gender – Second Quarter 2015

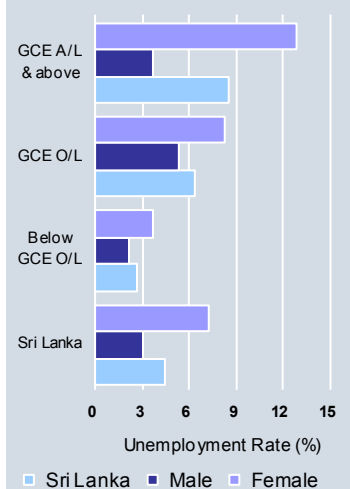


Figure 4: Unemployment rate by level of education and gender – Second Quarter 2015

TABLE 1 - HISTORICAL TABLE OF LABOUR FORCE STATUS (CURRENT) OF THE HOUSEHOLD POPULATION, 15 YEARS OF AGE AND OVER - BOTH SEXES

NATIONAL LEVEL DATA								
YEAR	HOUSEHOLD POPULATION (15 YEARS & OVER)	LABOUR FORCE						NOT IN LABOUR FORCE NUMBER
		TOTAL LABOUR FORCE	LABOUR FORCE PARTICI: RATE(%)	EMPLOYED		UNEMPLOYED		
				NUMBER	RATE (% TO TOTAL LABOUR FORCE)	NUMBER	RATE (% TO TOTAL LABOUR FORCE)	
2008 ¹	14,626,833	8,061,725	55.1	7,628,683	94.6	433,042	5.4	6,565,107
2009 ¹	14,876,264	8,051,089	54.1	7,579,835	94.1	471,254	5.9	6,825,175
2010 ¹	15,166,285	8,096,477	53.4	7,696,142	95.1	400,335	4.9	7,069,808
2011 ²	16,122,111	8,543,776	53.0	8,186,305	95.8	357,471	4.2	7,578,335
2012 ²	16,081,285	8,454,364	52.6	8,118,362	96.0	336,002	4.0	7,626,921
2013 ²	16,359,761	8,802,113	53.8	8,417,674	95.6	384,439	4.4	7,557,648
2014 ²	16,531,768	8,804,548	53.3	8,423,994	95.7	380,554	4.3	7,727,220
2013Q2 ²	16,357,652	8,866,395	54.2	8,475,419	95.6	390,975	4.4	7,491,257
2014Q2 ²	16,454,039	8,811,836	53.6	8,413,171	95.5	398,665	4.5	7,642,203
2015Q1 ²	16,648,811	8,924,716	53.6	8,502,270	95.3	422,446	4.7	7,724,095
2015Q2 ²	16,596,533	9,009,970	54.3	8,600,629	95.5	409,341	4.5	7,586,563

¹ - Excluding Northern province

² - All the districts are included

**TABLE 1A - HISTORICAL TABLE OF LABOUR FORCE STATUS (CURRENT) OF THE HOUSEHOLD POPULATION,
15 YEARS OF AGE AND OVER - MALE**

YEAR	HOUSEHOLD POPULATION (15 YEARS & OVER)	LABOUR FORCE						NOT IN LABOUR FORCE NUMBER
		TOTAL LABOUR FORCE	LABOUR FORCE PARTICI: RATE(%)	EMPLOYED		UNEMPLOYED		
				NUMBER	RATE (% TO TOTAL LABOUR FORCE)	NUMBER	RATE (% TO TOTAL LABOUR FORCE)	
2008 ¹	6,848,600	5,212,933	76.1	5,018,954	96.3	193,978	3.7	1,635,668
2009 ¹	6,925,821	5,173,106	74.7	4,949,825	95.7	223,281	4.3	1,752,715
2010 ¹	7,078,246	5,310,872	75.0	5,125,763	96.5	185,108	3.5	1,767,374
2011 ²	7,570,144	5,605,446	74.0	5,452,723	97.3	152,723	2.7	1,964,698
2012 ²	7,508,356	5,629,617	75.0	5,469,759	97.2	159,858	2.8	1,878,740
2013 ²	7,577,344	5,677,815	74.9	5,498,815	96.8	179,000	3.2	1,899,529
2014 ²	7,676,876	5,728,383	74.6	5,548,131	96.9	180,252	3.1	1,948,493
2013Q2 ²	7,643,197	5,767,225	75.5	5,589,387	96.9	177,838	3.1	1,875,972
2014Q2 ²	7,656,783	5,754,446	75.2	5,560,143	96.6	194,303	3.4	1,902,337
2015Q1 ²	7,648,271	5,650,690	73.9	5,488,213	97.1	162,477	2.9	1,997,581
2015Q2 ²	7,657,435	5,726,609	74.8	5,552,614	97.0	173,995	3.0	1,930,826

**TABLE 1B - HISTORICAL TABLE OF LABOUR FORCE STATUS (CURRENT) OF THE HOUSEHOLD POPULATION,
15 YEARS OF AGE AND OVER - FEMALE**

YEAR	HOUSEHOLD POPULATION (15 YEARS & OVER)	LABOUR FORCE						NOT IN LABOUR FORCE NUMBER
		TOTAL LABOUR FORCE	LABOUR FORCE PARTICI: RATE(%)	EMPLOYED		UNEMPLOYED		
				NUMBER	RATE (% TO TOTAL LABOUR FORCE)	NUMBER	RATE (% TO TOTAL LABOUR FORCE)	
2008 ¹	7,778,232	2,848,793	36.6	2,609,729	91.6	239,064	8.4	4,929,440
2009 ¹	7,950,443	2,877,983	36.2	2,630,010	91.4	247,973	8.6	5,072,460
2010 ¹	8,088,039	2,785,605	34.4	2,570,379	92.3	215,226	7.7	5,302,434
2011 ²	8,551,967	2,938,329	34.4	2,733,582	93.0	204,748	7.0	5,613,637
2012 ²	8,572,929	2,824,747	32.9	2,648,603	93.8	176,144	6.2	5,748,181
2013 ²	8,782,417	3,124,298	35.6	2,918,859	93.4	205,439	6.6	5,658,119
2014 ²	8,854,892	3,076,165	34.7	2,875,862	93.5	200,303	6.5	5,778,727
2013Q2 ²	8,714,455	3,099,170	35.6	2,886,033	93.1	213,137	6.9	5,615,285
2014Q2 ²	8,797,256	3,057,390	34.8	2,853,028	93.3	204,362	6.7	5,739,867
2015Q1 ²	9,000,540	3,274,026	36.4	3,014,057	92.1	259,969	7.9	5,726,514
2015Q2 ²	8,939,097	3,283,361	36.7	3,048,015	92.8	235,347	7.2	5,655,736

¹ - Excluding Northern province

² - All the districts are included

**TABLE 2 - LABOUR FORCE STATUS (CURRENT) OF THE HOUSEHOLD POPULATION 15 YEARS OF AGE AND OVER ,
BY AGE - BOTH SEXES**

(2015 2nd Quarter)

AGE	HOUSEHOLD POPULATION (15 YEARS & OVER)	LABOUR FORCE						NOT IN LABOUR FORCE NUMBER
		TOTAL LABOUR FORCE	LABOUR FORCE PARTICI: RATE(%)	EMPLOYED		UNEMPLOYED		
				NUMBER	RATE (% TO TOTAL LABOUR FORCE)	NUMBER	RATE (% TO TOTAL LABOUR FORCE)	
ALL AGES	16,596,533	9,009,970	54.3	8,600,629	95.5	409,341	4.5	7,586,563
15 - 19 YRS	1,653,447	242,462	14.7	189,789	78.3	52,674	21.7	1,410,985
20 - 24 YRS	1,351,616	769,442	56.9	605,490	78.7	163,952	21.3	582,174
25 - 29 YRS	1,407,118	930,995	66.2	845,270	90.8	85,724	9.2	476,123
30 - 39 YRS	3,299,354	2,246,743	68.1	2,184,888	97.2	61,855	2.8	1,052,611
40 + YRS	8,884,998	4,820,328	54.3	4,775,192	99.1	45,136	0.9	4,064,670

**TABLE 2A - LABOUR FORCE STATUS (CURRENT) OF THE HOUSEHOLD POPULATION 15 YEARS OF AGE AND OVER ,
BY AGE - MALE**

(2015 2nd Quarter)

AGE	HOUSEHOLD POPULATION (15 YEARS & OVER)	LABOUR FORCE						NOT IN LABOUR FORCE NUMBER
		TOTAL LABOUR FORCE	LABOUR FORCE PARTICI: RATE(%)	EMPLOYED		UNEMPLOYED		
				NUMBER	RATE (% TO TOTAL LABOUR FORCE)	NUMBER	RATE (% TO TOTAL LABOUR FORCE)	
ALL AGES	7,657,435	5,726,609	74.8	5,552,614	97.0	173,995	3.0	1,930,826
15 - 19 YRS	814,013	161,974	19.9	132,464	81.8	29,510	18.2	652,039
20 - 24 YRS	639,719	470,893	73.6	392,754	83.4	78,140	16.6	168,826
25 - 29 YRS	611,563	566,726	92.7	541,320	95.5	25,406	4.5	44,837
30 - 39 YRS	1,487,993	1,431,976	96.2	1,405,114	98.1	26,862	1.9	56,017
40 + YRS	4,104,147	3,095,040	75.4	3,080,963	99.5	14,077	0.5	1,009,107

**TABLE 2B - LABOUR FORCE STATUS (CURRENT) OF THE HOUSEHOLD POPULATION 15 YEARS OF AGE AND OVER ,
BY AGE - FEMALE**

(2015 2nd Quarter)

AGE	HOUSEHOLD POPULATION (15 YEARS & OVER)	LABOUR FORCE						NOT IN LABOUR FORCE NUMBER
		TOTAL LABOUR FORCE	LABOUR FORCE PARTICI: RATE(%)	EMPLOYED		UNEMPLOYED		
				NUMBER	RATE (% TO TOTAL LABOUR FORCE)	NUMBER	RATE (% TO TOTAL LABOUR FORCE)	
ALL AGES	8,939,097	3,283,361	36.7	3,048,015	92.8	235,347	7.2	5,655,736
15 - 19 YRS	839,435	80,489	9.6	57,325	71.2	23,164	28.8	758,946
20 - 24 YRS	711,897	298,549	41.9	212,736	71.3	85,813	28.7	413,348
25 - 29 YRS	795,555	364,269	45.8	303,950	83.4	60,319	16.6	431,286
30 - 39 YRS	1,811,361	814,767	45.0	779,774	95.7	34,993	4.3	996,594
40 + YRS	4,780,851	1,725,288	36.1	1,694,230	98.2	31,058	1.8	3,055,562

These figures are to be treated with caution as the corresponding CV (Coefficient of variation) values are high.

**TABLE 3 - HISTORICAL TABLE OF CURRENTLY EMPLOYED PERSONS BY AGE GROUPS
(PERCENTAGE) - BOTH SEXES**

Year	All Ages	Age Groups				
		15 - 19 YRS	20 - 24 YRS	25 - 29 YRS	30 - 39 YRS	40+ YRS
2008 ¹	100.0	3.4	9.9	11.7	24.0	51.0
2009 ¹	100.0	3.4	8.6	11.5	24.4	52.1
2010 ¹	100.0	3.0	8.5	10.9	24.0	53.5
2011 ²	100.0	3.1	8.6	11.0	24.3	53.0
2012 ²	100.0	2.5	8.3	11.0	25.2	53.0
2013 ²	100.0	2.7	7.9	10.1	24.8	54.5
2014 ²	100.0	2.4	7.2	9.7	25.2	55.5
2013Q2 ²	100.0	2.8	7.8	10.7	25.1	53.6
2014Q2 ²	100.0	2.4	7.7	9.7	25.3	55.0
2015Q1 ²	100.0	2.5	7.3	9.8	24.0	56.4
2015Q2 ²	100.0	2.2	7.0	9.8	25.4	55.5

**TABLE 3A - HISTORICAL TABLE OF CURRENTLY EMPLOYED PERSONS BY AGE GROUPS
(PERCENTAGE) - MALE**

Year	All Ages	Age Groups				
		15 - 19 YRS	20 - 24 YRS	25 - 29 YRS	30 - 39 YRS	40+ YRS
2008 ¹	100.0	3.6	9.7	11.9	24.1	50.7
2009 ¹	100.0	3.5	8.4	11.8	24.3	52.0
2010 ¹	100.0	3.1	8.2	11.3	24.1	53.3
2011 ²	100.0	3.2	8.6	11.3	24.3	52.5
2012 ²	100.0	2.7	8.3	11.2	25.2	52.6
2013 ²	100.0	2.9	7.8	10.2	25.0	54.1
2014 ²	100.0	2.4	7.3	9.6	25.5	55.2
2013Q2 ²	100.0	2.8	7.6	11.3	24.9	53.5
2014Q2 ²	100.0	2.2	8.0	9.8	25.7	54.3
2015Q1 ²	100.0	2.5	7.3	9.7	23.8	56.6
2015Q2 ²	100.0	2.4	7.1	9.7	25.3	55.5

**TABLE 3B - HISTORICAL TABLE OF CURRENTLY EMPLOYED PERSONS BY AGE GROUPS
(PERCENTAGE) - FEMALE**

Year	All Ages	Age Groups				
		15 - 19 YRS	20 - 24 YRS	25 - 29 YRS	30 - 39 YRS	40+ YRS
2008 ¹	100.0	3.2	10.2	11.2	24.0	51.5
2009 ¹	100.0	3.3	8.9	11.0	24.6	52.2
2010 ¹	100.0	2.9	9.2	10.0	23.9	54.0
2011 ²	100.0	2.8	8.5	10.3	24.4	54.0
2012 ²	100.0	2.2	8.5	10.5	25.1	53.7
2013 ²	100.0	2.4	8.0	10.0	24.3	55.2
2014 ²	100.0	2.2	7.1	9.9	24.8	56.0
2013Q2 ²	100.0	2.9	8.2	9.6	25.5	53.8
2014Q2 ²	100.0	2.6	7.0	9.6	24.5	56.3
2015Q1 ²	100.0	2.5	7.3	9.8	24.3	56.1
2015Q2 ²	100.0	1.9	7.0	10.0	25.6	55.6

¹ - Excluding Northern province

² - All the districts are included

**TABLE 4 - HISTORICAL TABLE OF CURRENTLY EMPLOYED PERSONS BY LEVEL OF EDUCATION
(PERCENTAGE) - BOTH SEXES**

Year	Total	Level of education			
		Grade 5 & Below	Grades 6 - 10	GCE (O.L)/ NCGE	GCE (A.L)/ HNCE & above
2008 ¹	100.0	20.8	47.4	15.8	15.9
2009 ¹	100.0	21.1	47.2	15.5	16.2
2010 ¹	100.0	20.2	48.2	15.9	15.8
2011 ²	100.0	18.8	48.1	15.7	17.4
2012 ²	100.0	18.5	47.2	17.6	16.7
2013 ²	100.0	17.9	47.8	16.0	18.3
2014 ²	100.0	16.1	48.9	16.1	18.8
2013Q2 ²	100.0	17.8	49.8	15.8	16.6
2014Q2 ²	100.0	16.9	48.0	16.1	19.0
2015Q1 ²	100.0	16.3	49.1	17.0	17.5
2015Q2 ²	100.0	16.3	46.2	17.7	19.7

**TABLE 4A - HISTORICAL TABLE OF CURRENTLY EMPLOYED PERSONS BY LEVEL OF EDUCATION
(PERCENTAGE) - MALE**

Year	Total	Level of education			
		Grade 5 & Below	Grades 6 - 10	GCE (O.L)/ NCGE	GCE (A.L)/ HNCE & above
2008 ¹	100.0	20.1	50.6	16.1	13.2
2009 ¹	100.0	20.3	50.7	15.7	13.3
2010 ¹	100.0	19.1	51.6	16.2	13.1
2011 ²	100.0	18.3	51.0	16.1	14.6
2012 ²	100.0	17.9	51.1	17.8	13.2
2013 ²	100.0	17.6	51.4	16.2	14.8
2014 ²	100.0	16.1	52.6	16.3	15.0
2013Q2 ²	100.0	17.6	52.9	16.0	13.6
2014Q2 ²	100.0	16.9	51.4	16.2	15.5
2015Q1 ²	100.0	16.0	53.0	17.7	13.3
2015Q2 ²	100.0	16.1	50.0	18.4	15.5

**TABLE 4B - HISTORICAL TABLE OF CURRENTLY EMPLOYED PERSONS BY LEVEL OF EDUCATION
(PERCENTAGE) - FEMALE**

Year	Total	Level of education			
		Grade 5 & Below	Grades 6 - 10	GCE (O.L)/ NCGE	GCE (A.L)/ HNCE & above
2008 ¹	100.0	22.2	41.3	15.3	21.2
2009 ¹	100.0	22.5	40.6	15.3	21.7
2010 ¹	100.0	22.3	41.3	15.3	21.1
2011 ²	100.0	19.8	42.2	15.0	23.1
2012 ²	100.0	19.8	39.2	17.2	23.8
2013 ²	100.0	18.5	41.0	15.7	24.8
2014 ²	100.0	16.2	41.8	15.8	26.1
2013Q2 ²	100.0	18.3	43.9	15.4	22.3
2014Q2 ²	100.0	16.8	41.4	15.9	25.9
2015Q1 ²	100.0	16.9	42.1	15.7	25.3
2015Q2 ²	100.0	16.6	39.4	16.5	27.5

¹ - Excluding Northern province

² - All the districts are included

**TABLE 5 - HISTORICAL TABLE OF CURRENTLY EMPLOYED PERSONS BY EMPLOYMENT STATUS
(PERCENTAGE) - BOTH SEXES**

YEAR	TOTAL EMPLOYED	EMPLOYEE			EMPLOYER	OWN	UNPAID
		TOTAL	PUBLIC	PRIVATE		ACCOUNT WORKER	FAMILY WORKER
2008 ¹	100.0	56.5	15.3	41.3	2.9	30.3	10.3
2009 ¹	100.0	57.7	15.5	42.2	2.6	29.2	10.4
2010 ¹	100.0	55.5	14.3	41.3	2.6	31.5	10.3
2011 ²	100.0	55.0	14.4	40.5	2.9	31.5	10.7
2012 ²	100.0	56.5	15.2	41.3	2.8	31.9	8.8
2013 ²	100.0	55.7	15.1	40.6	3.0	32.2	9.1
2014 ²	100.0	56.4	15.3	41.1	2.8	31.9	8.9
2013Q2 ²	100.0	53.8	13.1	40.6	3.2	33.0	10.0
2014Q2 ²	100.0	56.7	15.7	41.0	2.6	31.8	8.9
2015Q1 ²	100.0	55.2	14.7	40.5	2.7	33.0	9.1
2015Q2 ²	100.0	57.5	15.7	41.7	3.1	32.1	7.4

**TABLE 5A - HISTORICAL TABLE OF CURRENTLY EMPLOYED PERSONS BY EMPLOYMENT STATUS
(PERCENTAGE) - MALE**

YEAR	TOTAL EMPLOYED	EMPLOYEE			EMPLOYER	OWN	UNPAID
		TOTAL	PUBLIC	PRIVATE		ACCOUNT WORKER	FAMILY WORKER
2008 ¹	100.0	57.6	13.7	43.9	4.1	34.2	4.1
2009 ¹	100.0	59.2	13.7	45.5	3.6	33.0	4.3
2010 ¹	100.0	56.2	12.8	43.4	3.5	36.0	4.3
2011 ²	100.0	55.8	12.7	43.1	3.8	36.0	4.3
2012 ²	100.0	56.6	12.8	43.8	3.8	35.9	3.6
2013 ²	100.0	56.6	12.8	43.9	4.2	36.2	3.0
2014 ²	100.0	57.3	13.0	44.3	3.7	36.1	2.9
2013Q2 ²	100.0	55.0	10.9	44.2	4.2	37.2	3.5
2014Q2 ²	100.0	57.1	13.5	43.7	3.4	36.4	3.0
2015Q1 ²	100.0	56.3	12.7	43.6	3.8	36.9	3.0
2015Q2 ²	100.0	57.6	13.0	44.7	4.0	35.9	2.4

**TABLE 5B - HISTORICAL TABLE OF CURRENTLY EMPLOYED PERSONS BY EMPLOYMENT STATUS
(PERCENTAGE) - FEMALE**

YEAR	TOTAL EMPLOYED	EMPLOYEE			EMPLOYER	OWN	UNPAID
		TOTAL	PUBLIC	PRIVATE		ACCOUNT WORKER	FAMILY WORKER
2008 ¹	100.0	54.4	18.2	36.2	0.7	22.8	22.1
2009 ¹	100.0	55.0	19.0	36.0	0.9	22.1	22.0
2010 ¹	100.0	54.3	17.3	37.0	0.8	22.6	22.3
2011 ²	100.0	53.2	17.8	35.4	0.9	22.7	23.2
2012 ²	100.0	56.1	19.9	36.2	0.9	23.6	19.4
2013 ²	100.0	54.0	19.4	34.6	0.9	24.6	20.5
2014 ²	100.0	54.7	19.9	34.9	1.0	23.7	20.6
2013Q2 ²	100.0	51.3	17.5	33.8	1.0	25.0	22.7
2014Q2 ²	100.0	55.9	20.0	35.9	1.0	22.6	20.4
2015Q1 ²	100.0	53.1	18.4	34.7	0.8	26.1	20.0
2015Q2 ²	100.0	57.1	20.8	36.4	1.3	25.0	16.5

¹ - Excluding Northern province

² - All the districts are included

These figures are to be treated with caution as the corresponding CV (Coefficient of variation) values are high.

Table 6 - Currently Employed person by Industry group (Based on ISIC Fourth Revision) - both sexes

Year	Total	Industry Group																
		1	2	3	6	7	8	9	10	11	13	14	15	16	17	19	20	Other
2013	8,417,674	2,504,310	100,153	1,514,039	587,968	1,150,911	517,511	188,219	62,640	153,027	67,964	107,027	629,288	329,572	141,020	131,982	182,277	49,766
2014	8,423,994	2,399,629	79,193	1,535,243	615,374	1,110,605	527,781	199,602	71,357	160,728	52,556	112,335	654,938	341,183	138,033	143,889	219,463	62,083
2013Q2	8,475,419	2,668,059	124,897	1,481,903	610,893	1,182,254	529,608	205,370	63,923	149,866	73,979	92,527	535,117	290,140	134,632	132,309	140,883	59,059
2014Q2	8,413,171	2,368,845	76,340	1,511,065	602,333	1,136,098	479,568	169,433	86,659	169,762	60,098	116,147	684,770	338,812	141,213	145,795	259,000	67,234
2015Q1	8,502,270	2,500,322	79,101	1,554,639	566,742	1,126,627	526,142	210,411	59,932	154,288	64,446	128,356	677,940	292,207	134,227	148,666	207,692	70,533
2015Q2	8,600,629	2,443,301	39,690	1,551,418	615,103	1,097,800	521,785	202,063	66,271	174,775	70,211	138,265	690,919	393,220	144,970	167,036	203,455	80,348

Note: These Industry groups are based on ISIC - Rev. 4

1 Agriculture, forestry and fishing (A)

2 Mining & quarrying (B)

3 Manufacturing (C)

6 Construction, Electricity, gas, steam and air conditioning supply, Water supply, sewerage, waste management and remediation activities (D, E,F)

7 Wholesale and retail trade, repair of motor vehicles and motor cycles(G)

8 Transportation and storage (H)

9 Accommodation and food services activities (I)

10 Information and communication (J)

11 Financial and insurance activities (K)

13 Professional, scientific and technical activities (M)

14 Administrative and support service activities (N)

15 Public administration and defence compulsory social security (O)

16 Education (P)

17 Human health and social work activities (Q)

19 Other service activities (S)

20 Activities of households as employers; undifferentiated goods and services - producing activities of households for own use (T)

Other

Other

12 Real estate activities (L)

18 Arts, entertainment and recreation (R)

21 Activities of extra territorial organizations & bodies (U)

Table 6A - Currently Employed person by Industry group (Based on ISIC Fourth Revision) - Male

Year	Total	Industry Group																
		1	2	3	6	7	8	9	10	11	13	14	15	16	17	19	20	Other
2013	5,498,815	1,532,888	88,137	800,081	570,928	818,537	494,339	135,302	47,762	89,213	41,868	78,616	407,594	98,169	54,441	92,539	108,256	40,144
2014	5,548,131	1,482,816	73,998	812,534	589,244	792,808	512,240	137,400	54,237	91,064	34,806	89,998	422,979	104,820	60,202	111,841	129,848	47,295
2013Q2	5,589,387	1,648,760	105,142	791,286	595,611	848,894	496,622	137,380	45,849	93,209	47,087	66,670	336,147	78,087	61,901	98,629	90,438	47,674
2014Q2	5,560,143	1,470,647	67,481	795,310	574,646	840,352	465,922	115,006	65,719	96,023	43,269	89,768	442,802	106,991	69,703	116,445	149,253	50,806
2015Q1	5,488,213	1,506,247	74,324	805,598	535,744	798,982	508,553	139,409	46,611	74,204	44,398	97,057	438,803	80,942	44,339	112,023	127,360	53,619
2015Q2	5,552,614	1,466,298	36,805	821,316	589,311	785,229	502,178	143,852	55,560	98,147	45,088	110,491	446,884	110,485	50,383	121,926	107,179	61,483

Table 6B - Currently Employed person by Industry group (Based on ISIC Fourth Revision) - Female

Year	Total	Industry Group																
		1	2	3	6	7	8	9	10	11	13	14	15	16	17	19	20	Other
2013	2,918,859	971,422	12,016	713,957	17,040	332,374	23,173	52,917	14,878	63,814	26,096	28,411	221,695	231,402	86,578	39,443	74,021	9,622
2014	2,875,862	916,814	5,195	722,709	26,130	317,797	15,541	62,201	17,120	69,664	17,750	22,337	231,959	236,363	77,830	32,048	89,615	14,789
2013Q2	2,886,033	1,019,299	19,755	690,617	15,282	333,360	32,986	67,990	18,074	56,658	26,891	25,857	198,970	212,054	72,731	33,680	50,445	11,384
2014Q2	2,853,028	898,198	8,859	715,755	27,687	295,746	13,646	54,427	20,940	73,739	16,829	26,379	241,968	231,821	71,510	29,350	109,748	16,428
2015Q1	3,014,057	994,075	4,777	749,041	30,997	327,645	17,589	71,002	13,321	80,084	20,049	31,299	239,137	211,265	89,888	36,643	80,332	16,914
2015Q2	3,048,015	977,003	2,885	730,102	25,793	312,571	19,607	58,211	10,711	76,627	25,123	27,774	244,035	282,735	94,587	45,110	96,276	18,864

Note: These Industry groups are based on ISIC - Rev. 4

These figures are to be treated with caution as the corresponding CV (Coefficient of variation) values are high.

1 Agriculture, forestry and fishing (A)

2 Mining & quarrying (B)

3 Manufacturing (C)

6 Construction, Electricity, gas, steam and air conditioning supply, Water supply, sewerage, waste management and remediation activities (D, E,F)

7 Wholesale and retail trade, repair of motor vehicles and motor cycles(G)

8 Transportation and storage (H)

9 Accommodation and food services activities (I)

10 Information and communication (J)

11 Financial and insurance activities (K)

13 Professional, scientific and technical activities (M)

14 Administrative and support service activities (N)

15 Public administration and defence compulsory social security (O)

16 Education (P)

17 Human health and social work activities (Q)

19 Other service activities (S)

20 Activities of households as employers; undifferentiated goods and services - producing activities of households for own use (T)

Other

Other

12 Real estate activities (L)

18 Arts, entertainment and recreation (R)

21 Activities of extra territorial organizations & bodies (U)

Table 6C: Historical table of currently employed population by major industry group - Both sexes

Major Industry Group	Year					
	2013	2014	2013Q2	2014Q2	2015Q1	2015Q2
Total	8,417,674	8,423,994	8,475,419	8,413,171	8,502,270	8,600,629
Agriculture	2,504,310	2,399,629	2,668,059	2,368,845	2,500,322	2,443,301
Industry	2,202,159	2,229,810	2,217,693	2,189,738	2,200,481	2,206,211
Services	3,711,204	3,794,554	3,589,668	3,854,588	3,801,467	3,951,118

Table 6D: Historical table of currently employed population by major industry group (percentage) - Both sexes

Major Industry Group	Year					
	2013	2014	2013Q2	2014Q2	2015Q1	2015Q2
Total	100.0	100.0	100.0	100.0	100.0	100.0
Agriculture	29.8	28.5	31.5	28.2	29.4	28.4
Industry	26.2	26.5	26.2	26.0	25.9	25.7
Services	44.1	45.0	42.4	45.8	44.7	45.9

Note: These Industry groups are based on ISIC - Rev. 4

Agriculture

1. Agriculture Forestry and Fishery (A)

Industries

1. Mining & Quarrying (B)
2. Manufacturing (C)
3. Construction, Electricity, gas, steam and air conditioning supply, Water supply, sewerage, waste management and remediation activities (D, E,F)

Services

1. Wholesale and retail trade, repair of motor vehicles and motor cycles(G)
2. Transportation and storage (H)
3. Accommodation and food services activities (I)
4. Information and communication (J)
5. Financial and insurance activities (K)
6. Professional, scientific and technical activities (M)
7. Administrative and support service activities (N)
8. Public administration and defence compulsory social security (O)
9. Education (P)
10. Human health and social work activities (Q)
11. Other service activities (S)
12. Activities of households as employers; undifferentiated goods and services - producing activities of households for own use (T)
13. Real estate activities (L) Arts, entertainment and recreation (R) Activities of extra territorial organizations & bodies (U)

Table 7 - Currently Employed person by Occupation group (Based on ISCO 08) - Both sexes

Year	Occupation group										
	Total	1	2	3	4	5	6	7	8	9	10
2013	8,417,674	393,388	532,446	499,721	311,354	935,546	1,624,971	1,439,192	708,049	1,918,771	54,235
2014	8,423,994	382,344	538,498	500,762	360,460	992,776	1,702,854	1,447,743	700,852	1,764,540	33,164
2013Q2	8,475,419	399,208	479,978	449,325	264,479	932,950	1,768,371	1,510,774	734,832	1,888,189	47,313
2014Q2	8,413,171	354,097	584,337	476,300	362,434	1,032,993	1,681,506	1,411,315	631,652	1,848,361	30,175
2015Q1	8,502,270	480,086	501,483	499,265	338,643	884,451	1,686,109	1,427,773	795,743	1,860,148	28,570
2015Q2	8,600,629	563,491	617,930	544,724	353,571	880,931	1,562,692	1,393,554	708,286	1,931,450	44,000

These figures are to be treated with caution as the corresponding CV (Coefficient of variation) values are high.

- | | | | |
|---|--|----|---|
| 1 | Managers, Senior Officials and Legislators | 6 | Skilled Agriculture, Forestry and Fishery workers |
| 2 | Professionals | 7 | Craft and Related Trades workers |
| 3 | Technicians and Associate Professionals | 8 | Plant and Machine operators and Assemblers |
| 4 | Clerks and Clerical support workers | 9 | Elementary occupations |
| 5 | Services and Sales workers | 10 | Armed Forces Occupations & unidentified occupations |

Table 7A - Currently Employed person by Occupation group (Based on ISCO 08) - Male

Year	Total	Occupation group									
		1	2	3	4	5	6	7	8	9	10
2013	5,498,815	279,252	203,625	320,862	153,574	647,849	1,064,063	975,201	614,994	1,191,062	48,333
2014	5,548,131	287,467	192,060	334,822	172,674	692,360	1,103,978	971,754	615,479	1,145,164	32,372
2013Q2	5,589,387	292,861	177,098	306,841	129,309	639,673	1,154,039	1,047,750	650,240	1,150,102	41,474
2014Q2	5,560,143	275,261	218,664	328,830	171,161	744,115	1,094,956	985,670	538,805	1,173,692	28,989
2015Q1	5,488,213	334,507	173,282	349,375	151,572	616,618	1,076,218	907,389	678,073	1,175,246	25,933
2015Q2	5,552,614	422,142	200,055	367,268	175,461	614,480	1,011,855	937,807	595,353	1,187,043	41,151

Table 7B - Currently Employed person by Occupation group (Based on ISCO 08) - Female

Year	Total	Occupation group									
		1	2	3	4	5	6	7	8	9	10
2013	2,918,859	114,136	328,821	178,859	157,780	287,698	560,908	463,990	93,055	727,709	5,902
2014	2,875,862	94,877	346,438	165,940	187,786	300,416	598,876	475,988	85,373	619,376	792
2013Q2	2,886,033	106,347	302,880	142,485	135,170	293,277	614,332	463,024	84,592	738,087	5,839
2014Q2	2,853,028	78,836	365,672	147,470	191,273	288,878	586,550	425,645	92,847	674,670	1,186
2015Q1	3,014,057	145,579	328,201	149,890	187,070	267,833	609,892	520,384	117,670	684,902	2,637
2015Q2	3,048,015	141,349	417,875	177,456	178,110	266,451	550,837	455,748	112,933	744,407	2,849

These figures are to be treated with caution as the corresponding CV (Coefficient of variation) values are high. .. Negligible

- | | | | |
|---|--|----|---|
| 1 | Managers, Senior Officials and Legislators | 6 | Skilled Agricultura, Forestry and Fishery workers |
| 2 | Professionals | 7 | Craft and Related Trades workers |
| 3 | Technicians and Associate Professionals | 8 | Plant and Machine operators and Assemblers |
| 4 | Clerks and Clerical support workers | 9 | Elementary occupations |
| 5 | Services and Sales workers | 10 | Armed Forces Occupations & unidentified occupations |

TABLE 8 - CURRENTLY EMPLOYED PERSONS BY HOURS PER WEEK ACTUALLY WORKED AT THE MAIN JOB AND MAJOR INDUSTRIAL GROUP (PERCENTAGE) - BOTH SEXES

MAJOR INDUSTRIAL GROUP	TOTAL	0 *	1 - 9	10 - 19	20 - 29	30 - 39	40 - 49	50 & OVER
Total	100.0	10.0	2.1	6.2	9.8	15.4	32.6	23.9
1	100.0	8.7	3.9	11.2	14.3	20.1	27.5	14.3
2	100.0	15.8	2.6	2.6	5.3	13.2	39.5	21.1
3	100.0	14.0	1.8	5.1	9.8	11.7	33.1	24.5
6	100.0	13.4	1.8	4.4	8.5	14.8	38.5	18.6
7	100.0	6.0	1.2	4.1	7.3	9.4	31.4	40.5
8	100.0	8.5	0.2	3.1	5.4	10.6	33.5	38.5
9	100.0	8.9	0.6	1.7	4.5	15.1	28.5	40.8
10	100.0	9.8	..	9.8	13.7	9.8	41.2	15.7
11	100.0	6.6	1.3	3.9	9.2	7.2	49.3	22.4
13	100.0	8.9	..	7.1	5.4	3.6	51.8	23.2
14	100.0	7.8	..	3.1	3.9	8.6	31.3	45.3
15	100.0	7.2	1.0	3.0	6.8	10.6	48.8	22.6
16	100.0	22.6	0.8	4.1	7.6	42.8	18.0	4.1
17	100.0	2.3	0.8	3.1	6.1	13.0	42.0	32.8
19	100.0	5.3	1.3	4.0	10.0	16.7	32.7	30.0
20	100.0	14.7	2.5	1.8	7.4	12.3	28.2	33.1
Other	100.0	5.7	2.9	2.9	11.4	8.6	34.3	34.3

* Has a job but not at work during the reference week

.. Negligible

■ These figures are to be treated with caution as the corresponding CV (Coefficient of variation) values are high.

Industry group

1 Agriculture, forestry and fishing (A)

2 Mining & quarrying (B)

3 Manufacturing (C)

6 Construction, Electricity, gas, steam and air conditioning supply, Water supply, sewerage, waste management and remediation activities (D, E,F)

7 Wholesale and retail trade, repair of motor vehicles and motor cycles(G)

8 Transportation and storage (H)

9 Accommodation and food services activities (I)

10 Information and communication (J)

11 Financial and insurance activities (K)

13 Professional, scientific and technical activities (M)

14 Administrative and support service activities (N)

15 Public administration and defence compulsory social security (O)

16 Education (P)

17 Human health and social work activities (Q)

19 Other service activities (S)

20 Activities of households as employers; undifferentiated goods and services - producing activities of households for own use (T)

Other

Other

12 Real estate activities (L)

18 Arts, entertainment and recreation (R)

21 Activities of extra territorial organizations & bodies (U)

**TABLE 9 - HISTORICAL TABLE OF CURRENTLY UNEMPLOYED PERSONS BY AGE GROUPS
(PERCENTAGE) - BOTH SEXES**

YEAR	TOTAL	AGE GROUPS				
		15 - 19 YRS	20 - 24 YRS	25 - 29 YRS	30 - 39 YRS	40 + YRS
2008 ¹	100.0	15.8	38.4	21.5	13.6	10.6
2009 ¹	100.0	14.5	37.5	21.3	15.1	11.6
2010 ¹	100.0	14.8	38.7	21.2	14.7	10.6
2011 ²	100.0	12.8	42.5	20.6	15.6	8.5
2012 ²	100.0	14.2	40.6	18.8	15.6	10.7
2013 ²	100.0	13.7	40.9	18.1	15.2	12.1
2014 ²	100.0	14.3	39.9	19.3	15.2	11.3
2013Q2 ²	100.0	15.7	42.3	15.8	16.8	9.5
2014Q2 ²	100.0	13.9	37.6	21.3	17.0	10.2
2015Q1 ²	100.0	17.2	37.6	18.7	15.0	11.5
2015Q2 ²	100.0	12.9	40.1	20.9	15.1	11.0

**TABLE 9A - HISTORICAL TABLE OF CURRENTLY UNEMPLOYED PERSONS BY AGE GROUPS
(PERCENTAGE) - MALE**

YEAR	TOTAL	AGE GROUPS				
		15 - 19 YRS	20 - 24 YRS	25 - 29 YRS	30 - 39 YRS	40+ YRS
2008 ¹	100.0	19.4	37.8	19.5	9.4	13.9
2009 ¹	100.0	17.9	36.4	18.9	12.4	14.4
2010 ¹	100.0	19.6	41.2	15.5	11.7	12.0
2011 ²	100.0	17.6	44.9	16.7	13.1	7.6
2012 ²	100.0	19.5	41.6	17.1	12.4	9.4
2013 ²	100.0	16.9	44.0	15.4	11.6	12.1
2014 ²	100.0	20.1	37.5	18.2	11.7	12.4
2013Q2 ²	100.0	16.2	41.5	15.7	15.6	11.0
2014Q2 ²	100.0	19.4	35.5	20.8	13.6	10.6
2015Q1 ²	100.0	27.4	32.9	14.2	13.8	11.7
2015Q2 ²	100.0	17.0	44.9	14.6	15.4	8.1

**TABLE 9B - HISTORICAL TABLE OF CURRENTLY UNEMPLOYED PERSONS BY AGE GROUPS
(PERCENTAGE) - FEMALE**

YEAR	TOTAL	AGE GROUPS				
		15 - 19 YRS	20 - 24 YRS	25 - 29 YRS	30 - 39 YRS	40+ YRS
2008 ¹	100.0	12.9	38.9	23.2	17.0	8.0
2009 ¹	100.0	11.5	38.5	23.5	17.5	9.0
2010 ¹	100.0	10.7	36.5	26.1	17.4	9.3
2011 ²	100.0	9.3	40.7	23.4	17.5	9.1
2012 ²	100.0	9.4	39.8	20.3	18.6	11.9
2013 ²	100.0	10.9	38.3	20.3	18.3	12.2
2014 ²	100.0	9.0	42.0	20.2	18.4	10.4
2013Q2 ²	100.0	15.3	42.9	15.8	17.8	8.2
2014Q2 ²	100.0	8.7	39.6	21.7	20.2	9.9
2015Q1 ²	100.0	10.9	40.5	21.5	15.8	11.3
2015Q2 ²	100.0	9.8	36.5	25.6	14.9	13.2

These figures are to be treated with caution as the corresponding CV (Coefficient of variation) values are high.

¹ - Excluding Northern province

² - All the districts are included

TABLE 10 - HISTORICAL TABLE OF CURRENTLY UNEMPLOYED PERSONS BY LEVEL OF EDUCATION (PERCENTAGE) - BOTH SEXES

YEAR	TOTAL	LEVEL OF EDUCATION			
		GRADE 5 & BELOW	GRADES 6 - 10	GCE(O/L) NCGE	GCE(A/L) HNCE & ABOVE
2008 ¹	100.0	4.5	39.3	23.4	32.8
2009 ¹	100.0	4.3	39.9	23.1	32.7
2010 ¹	100.0	2.7	34.9	22.7	39.7
2011 ²	100.0	2.7	37.9	19.9	39.4
2012 ²	100.0	2.6	37.4	27.3	32.8
2013 ²	100.0	3.9	36.5	22.1	37.4
2014 ²	100.0	3.2	37.9	22.4	36.5
2013Q2 ²	100.0	4.5	35.2	19.5	40.8
2014Q2 ²	100.0	2.5	38.3	21.0	38.2
2015Q1 ²	100.0	2.9	33.3	24.2	39.7
2015Q2 ²	100.0	1.9	34.7	25.0	38.3

TABLE 10A - HISTORICAL TABLE OF CURRENTLY UNEMPLOYED PERSONS BY LEVEL OF EDUCATION (PERCENTAGE) - MALE

YEAR	TOTAL	LEVEL OF EDUCATION			
		GRADE 5 & BELOW	GRADES 6 - 10	GCE(O/L) NCGE	GCE(A/L) HNCE & ABOVE
2008 ¹	100.0	5.3	49.7	23.1	21.9
2009 ¹	100.0	4.4	48.0	25.3	22.3
2010 ¹	100.0	3.4	40.4	25.4	30.9
2011 ²	100.0	2.0	47.6	20.4	29.9
2012 ²	100.0	2.0	46.8	29.7	21.5
2013 ²	100.0	4.6	43.6	24.3	27.5
2014 ²	100.0	3.1	48.3	22.9	25.7
2013Q2 ²	100.0	6.9	42.0	20.2	30.9
2014Q2 ²	100.0	1.8	46.8	24.5	26.9
2015Q1 ²	100.0	1.9	44.7	28.4	25.1
2015Q2 ²	100.0	1.9	46.2	33.0	18.8

TABLE 10B - HISTORICAL TABLE OF CURRENTLY UNEMPLOYED PERSONS BY LEVEL OF EDUCATION (PERCENTAGE) - FEMALE

YEAR	TOTAL	LEVEL OF EDUCATION			
		GRADE 5 & BELOW	GRADES 6 - 10	GCE(O/L) NCGE	GCE(A/L) HNCE & ABOVE
2008 ¹	100.0	3.8	30.9	23.7	41.7
2009 ¹	100.0	4.3	32.5	21.1	42.1
2010 ¹	100.0	2.1	30.1	20.5	47.3
2011 ²	100.0	3.3	30.7	19.5	46.5
2012 ²	100.0	3.0	28.8	25.1	43.1
2013 ²	100.0	3.2	30.4	20.3	46.1
2014 ²	100.0	3.2	28.5	22.1	46.2
2013Q2 ²	100.0	2.6	29.5	18.9	49.1
2014Q2 ²	100.0	3.1	30.3	17.7	48.9
2015Q1 ²	100.0	3.6	26.1	21.5	48.8
2015Q2 ²	100.0	2.0	26.2	19.1	52.8

These figures are to be treated with caution as the corresponding CV (Coefficient of variation) values are high.

¹ - Excluding Northern province

² - All the districts are included

TABLE 11 - CURRENTLY UNEMPLOYED PERSONS BY SEX AND DURATION OF UNEMPLOYMENT

(2015 2nd Quarter)

Sex	Total	Duration		
		Less than 6 months	6 to less than 12 months	12+ months
Both sexes	409,341	53,231	290,343	65,768
%	100.0	13.0	70.9	16.1
Male	173,995	17,355	128,897	27,743
%	100.0	10.0	74.1	15.9
Female	235,347	35,876	161,446	38,024
%	100.0	15.2	68.6	16.2

▣ These figures are to be treated with caution as the corresponding CV (Coefficient of variation) values are high.

STANDARD ERROR AND COEFFICIENT OF VARIATION OF SELECTED VARIABLES

(2015 2nd Quarter)

	Estimated Value	Standard Error	Coefficient of Variation (%)	Estimated Value (Ratio)	Standard Error	Coefficient of Variation (%)
General labour force characteristics						
Population (15 years & over)	16,596,533	163,577	1.0			
Employed Population	8600629	107,313	1.2			
Unemployed Population	409,341	25,457	6.2			
Employment Rate				4.5	0.275	6.043
Unemployment Rate				95.5	0.275	0.288
Labour Force	9,009,970	110,545	1.2			
Not in Labour Force	7,586,563	123,581	1.6			
Employed persons by major industry Groups						
1	2,443,301	97,645	4.0			
2	39,690	8,985	22.6			
3	1,551,418	59,677	3.8			
6	615,103	31,870	5.2			
7	1,097,800	46,745	4.3			
8	521,785	26,552	5.1			
9	202,063	19,485	9.6			
10	66,271	9,960	15.0			
11	174,775	17,211	9.8			
13	70,211	10,679	15.2			
14	138,265	14,688	10.6			
15	690,919	40,231	5.8			
16	393,220	24,662	6.3			
17	144,970	16,189	11.2			
19	167,036	17,673	10.6			
20	203,455	23,513	11.6			
Other	80,348	11,568	14.4			
Unemployed persons by level of education						
Below grade 5	7,966	3,257	40.9			
Grade 5 - 9/Year 6 - 10	142,022	13,803	9.7			
G.C.E.(O/L)/N.C.G.E.	102,388	12,440	12.2			
G.C.E.(A/L)/H.N.C.E. & above	156,966	15,676	10.0			

Industry group

- 1 Agriculture, forestry and fishing (A)
- 2 Mining & quarrying (B)
- 3 Manufacturing (C)
- 6 Construction, Electricity, gas, steam and air conditioning supply, Water supply, sewerage, waste management and remediation activities (D, E,F)
- 7 Wholesale and retail trade, repair of motor vehicles and motor cycles(G)
- 8 Transportation and storage (H)
- 9 Accommodation and food services activities (I)
- 10 Information and communication (J)
- 11 Financial and insurance activities (K)
- 13 Professional, scientific and technical activities (M)
- 14 Administrative and support service activities (N)
- 15 Public administration and defence compulsory social security (O)
- 16 Education (P)
- 17 Human health and social work activities (Q)
- 19 Other service activities (S)
- 20 Activities of households as employers; undifferentiated goods and services - producing activities of households for own use (T)
- Other
 - Real estate activities (L)
 - Arts, entertainment and recreation (R)
 - Activities of extra territorial organizations & bodies (U)

Special Statistical Appendix

EXPLANATORY NOTES

Coverage

Sri Lanka Labour Force Survey was designed to measure the levels and trends of employment, unemployment and labour force in Sri Lanka. This survey is being conducted quarterly, since the first quarter of 1990.

This quarterly survey of households is conducted through a scientifically selected sample designed to represent the civilian non-institutional population. Respondents are interviewed to obtain information about the employment status etc. of each member of the household 15 years of age and older.

The field work of the survey is done during the third week of each month, Monday through Sunday. This is known as the "survey week". The inquiry relates to activity or status are referred in the preceding week of the survey week; referred to as the "reference week".

The concepts and definitions underlying labour force data are as follows.

Concepts & Definitions

1. **Labour force** : The labour force is composed of the economically active population 15 years of age and over.
2. **The Economically Active Population** : is defined as those persons who are/were employed or unemployed during the reference period of the survey.
3. **Employed** : Persons, who during the reference period, worked as paid employees, employers, own account workers (self employed), or unpaid family workers are said to be employed. This includes persons with a job but not at work during the reference period.
4. **Unemployed** : Persons who are seeking and available for work, but had no employment during the reference period.
5. **Currently Economically Active** : A person who was employed or unemployed during the current reference period is considered to be currently economically active.
6. **Not in the Labour Force (not economically active)** : Persons who were neither working nor available/looking for work are classified as "not in the labour force". Persons are not in the labour force for such reasons as: full time care of the household, full – time students, retired or old age, infirmed or disabled, or are not interested in working for one reason or another. Current and Usual definitions apply.
7. **Criteria for classification of underemployment**: In order to classify an employed persons as visibly underemployed,

(i) If the person has worked less than the normal duration in his/her main activity

In Sri Lanka scenario, 35 hours per week is taken as the cut-off point applicable to all workers, except government teachers. As in practice, though teachers do have a normal duration of work which is below the general cut-off point, they should be on a full time schedule according to the nature of their job. Further, those who do have a secondary job, or those who are employers, were considered as having worked the normal duration in their respective activity.

Therefore, if the person has worked less than the normal duration in his/her activity (as described above), then the person is further questioned to ascertain whether he/She is prepared and available for further work if provided. Such persons are considered underemployed in their respective employment.

(ii) If the person has worked more than the normal duration in his/her activity

If the person has worked even more than 35 hours as usually, but he has worked less than 35 hours actually in the reference period, only due to the off season or bad weather, such persons were also further questioned to check their underemployment situation, considering them as a special category.

8. Informal Sector Employment

In order to classify a person to be employed in informal sector employment, following information were used.

- (i) Registration of the organization
- (ii) Accounts keeping practices of the organization
- (iii) Total number of regular employees of the organization.

Reliability of the estimates

Statistics based on the quarterly labour force data are subject to both sampling and non - sampling errors. When a sample rather than the entire population is surveyed, there is a chance that the sample estimates may differ from the "true" population values they represent.

The exact differences or sampling error, varies depending on the particular sample selected, and this variability is measured by the standard error of the estimate. There is about a 95 percent chance, or level of confidence, that an estimate based on a sample will differ by no more than 1.96 standard errors from the " true" population value, because of sampling error. Analyses relating to the Labour Force Survey are generally conducted at the 95 percent level of confidence.

For example, the confidence interval for the quarterly unemployment rate is on the order of

Estimated value *(of the unemployment rate)* \pm (standard error) * (1.96)

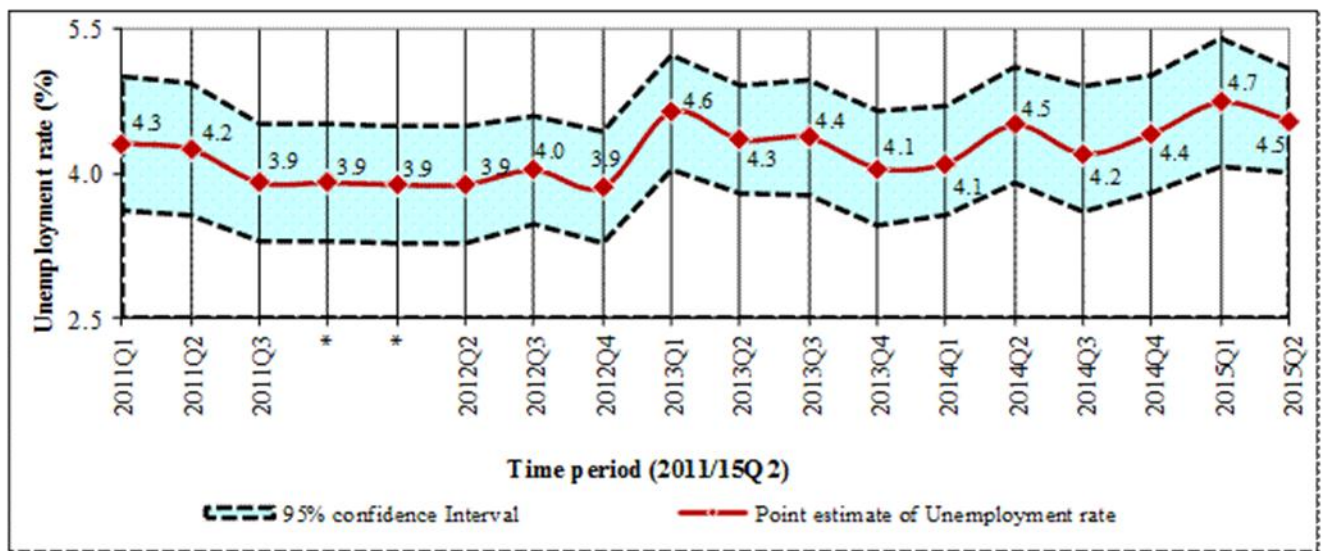
4.5 \pm (0.275) * (1.96)

(4.5 \pm 0.539)

This means, the 95 percent confidence interval on the quarterly unemployment rate could range from (5.6 to 7.2) . This implies that there is about 95 percent chance that the "true" unemployment rate lies within this interval. This range includes all the values range from 5.6 to 7.2. When the comparison of this estimate is done between two quarters, if any of the value within the 95 percent confidence interval of one quarter overlaps with the confidence interval of the other , it means that the estimates of this two quarters *are not significantly different*.

Therefore, in each quarterly labour force report, a separate table is given including approximate standard errors for some selected variables, so that users could understand this statistical scenario clearly.

Distribution of unemployment rates and 95% confidence intervals (2011Q1 - 2015Q2)



Note:

- * Survey was not conducted in the fourth quarter 2011 & first quarter 2012 due to activities of population census.
- Excluding Northern Province

As seen in figure 2, it is very important to note that, there were no statistically significant differences between the unemployment rates reported in different time periods of 2011/2015, when sampling error was considered.

Change in survey schedule

Current survey concepts and methods are very similar to those introduced at the beginning of the survey in 1990. However, some changes have been made over the years to improve the accuracy and usefulness of the data. In January 2006, some improvements were made to the labour force survey schedule in order to fulfill the requirements of data users and also to provide additional information for planning purposes. The revision was made focusing on literacy, household economic activities, and informal sector employment and under employment etc.

From January , 2013 onwards, the lower bound of working age populations is considered as age 15, hence age 15 and over population is considered as working age population .The survey schedule is updated to obtain more precise information on following age, informal employment, informal sector, secondary occupation, wages & income , unemployment & trainings.

New Industry & Occupation classifications

From January 2013 onward the survey uses new industry & occupation classifications, such as

SLIC Rev 4:- Sri Lanka Standard Industry Classification based on International Standard Industry classification - Rev.4 (ISIC Rev 4)

SLSCO 08:- Sri Lanka Standard Classification of Occupation -2008 based on International Standard Classification of Occupation-2008 (ISCO 2008)

Note :

It is important to note that, all the data published here are the estimates based on a sample survey and these are subject to sampling errors. These sampling errors can be statistically evaluated from the survey results. Therefore, sampling error is normally measured in terms of the standard error of the particular variable. Standard error could be used to calculate the confidence limits with a prescribed accuracy where the true value of the estimates lies.

Further reliability of the estimates can be expressed in terms of Coefficient of Variation (CV). The CV is a relative measure of the sampling error and is calculated as sampling error divided by the expected value of the given characteristic.

In view of this, following table is given to show the estimates for some selected variables, its standard error, CV and 95% Confidence interval.

It is also important to note that all the estimates we publish in this report are subject to sampling error and one should be cautious in the interpretation of results, especially with respect to the trends over time.

Estimate of Confidence Intervals for some selected characteristics

Year	Labour Force					Employed				
	No.	Standard error	C.V (%)	95% C.I.		No.	Standard error	C.V (%)	95% C.I.	
				Lower	Upper				Lower	Upper
2008 ¹	8,061,725	109,709	1.36	7,846,618	8,276,832	7,628,683	104,306	1.37	7,424,169	7,833,196
2009 ¹	8,051,089	107,213	1.33	7,840,876	8,261,302	7,579,835	102,161	1.35	7,379,527	7,780,143
2010 ¹	8,096,477	110,375	1.36	7,880,065	8,312,889	7,696,142	105,457	1.37	7,489,372	7,902,913
2011 ²	8,543,776	163,523	1.91	8,223,154	8,864,397	8,186,305	157,067	1.92	7,878,342	8,494,268
2012 ²	8,454,364	144,233	1.71	8,171,566	8,737,162	8,118,362	138,850	1.71	7,846,117	8,390,606
2013 ²	8,802,113	61,249	0.70	8,682,006	8,922,219	8,417,674	59,454	0.71	8,301,087	8,534,261
2014 ²	8,804,548	66,560	0.76	8,674,027	8,935,069	8,423,994	63,803	0.76	8,298,880	8,549,107
2013Q2 ²	8,866,395	125,290	1.41	8,620,306	9,112,483	8,475,419	123,112	1.45	8,233,607	8,717,231
2014Q2 ²	8,811,836	128,636	1.46	8,559,176	9,064,496	8,413,171	122,901	1.46	8,171,774	8,654,567
2015Q1 ²	8,924,716	122,426	1.37	8,684,252	9,165,180	8,502,270	116,189	1.37	8,274,057	8,730,483
2015Q2 ²	9,009,970	110,545	1.23	8,792,840	9,227,100	8,600,629	107,313	1.25	8,389,847	8,811,410

Year	Unemployed					Unemployment Rate				
	No.	Standard error	C.V (%)	95% C.I.		Rate	Standard error	C.V (%)	95% C.I.	
				Lower	Upper				Lower	Upper
2008 ¹	433,042	14,975	3.46	403,680	462,405	5.4	0.2	3.14	5.0	5.7
2009 ¹	471,254	15,683	3.33	440,503	502,004	5.9	0.2	3.07	5.5	6.2
2010 ¹	400,335	14,742	3.68	371,430	429,240	4.9	0.2	3.39	4.6	5.3
2011 ²	357,471	17,726	4.96	322,715	392,226	4.2	0.2	4.52	3.8	4.6
2012 ²	336,002	15,267	4.54	306,067	365,938	4.0	0.2	4.17	3.6	4.3
2013 ²	384,439	13,218	3.44	358,519	410,359	4.4	0.1	3.34	4.1	4.7
2014 ²	380,554	13,974	3.67	353,152	407,956	4.3	0.2	3.52	4.0	4.6
2013Q2 ²	390,975	24,967	6.39	341,936	440,014	4.4	0.3	6.3	3.9	5.0
2014Q2 ²	398,665	28,432	7.13	342,820	454,511	4.5	0.3	6.83	3.9	5.1
2015Q1 ²	422,446	31,595	7.48	360,389	484,503	4.7	0.3	7.16	4.1	5.4
2015Q2 ²	409,341	25,457	6.22	359,339	459,343	4.5	0.3	6.04	4.0	5.1

¹ - Excluding Northern provinces

² - All the districts are included

ALTERNATIVE ESTIMATES

Alternative Estimates of Employment, Unemployment and Labour Force Characteristics

Official employment, unemployment and labour force characteristics are estimated at the Sri Lanka Labour Force Survey, based on the internationally comparable concepts and definitions recommended by the ILO. However the validity of the concepts and definitions used at the survey is questioned very often in some forums, for the appropriateness of these concepts and definitions in the Sri Lankan context.

The concepts and definitions, which were found to be controversial, are as below.

- (1) **Number of Hours of Work** : A person who work **at least one hour** during the reference week, is considered **employed**, under these definitions.
- (2) **Working Age Population** : All persons of **age 10 years and over** are considered to be in the working age, before 2013. However, this was changed as age 15 and over from 2013 onward.
- (3) **Employment Status** : All,
 - a) Paid employees, (those who work for wages/salaries).
 - b) Employers (who have at least one paid employee under them).
 - c) Own account workers (who carry out the economic activity without having anypaid employees).
 - d) Contributing family workers (who make their contribution to the economic activities carried out by their own household, without wages/salaries).

The validity of the above concepts and definitions is raised due to the following reasons.

- (1) **Number of Hours of Work** : Some pointed out that one hour per week is too low, to consider a person to be employed.
- (2) **Working Age Population** : Some pointed out those persons in the age group 10-14 yrs. are too young to be considered in the working age. (From 2013 onward the working age population is considered as age 15 and over).
- (3) **Employment Status** : Some pointed out that 'contributing family workers' may work in the family enterprise without payment because they have no other work, and so it is not appropriate to consider them as employed.

An attempt has been made to produce '**Alternative estimates of Employment, Unemployment and Labour Force Characteristics,**' by revising the original concepts and definitions so that the above issues are addressed as explained below.

The revisions made are,

- (1) **Number of Hours of Work** : Persons who work **20 hours or more per week only** are considered to be employed.
- (2) **Contributing Family Worker** : Contributing family workers are **not** considered as employed. Those contributing family workers who were reported to be seeking some other work are considered as **unemployed** and the rest of the unpaid family workers are considered as **economically inactive** (not in the labour force) so only, **a) paid employees b) employers and c) own account workers are considered to be employed.**

Following tables are based on the above alternative concepts and definitions.

Alternative Estimates of Employment, Unemployment and Labour Force Characteristics

TABLE 1 - LABOUR FORCE STATUS OF HOUSEHOLD POPULATION 15 YEARS & OVER (ALTERNATIVE ESTIMATES)

YEAR	HOUSEHOLD POPULATION (15 YEARS & OVER)	TOTAL LABOUR FORCE	LABOUR FORCE PARTICI: RATE(%)	LABOUR FORCE				NOT IN LABOUR FORCE NUMBER
				EMPLOYED		UNEMPLOYED		
				NUMBER	RATE (% TO TOTAL LABOUR FORCE)	NUMBER	RATE (% TO TOTAL LABOUR FORCE)	
2008 ¹	14,626,581	6,859,040	46.9	6,425,997	93.7	433,042	6.3	7,767,541
2009 ¹	14,876,264	6,836,598	46.0	6,365,344	93.1	471,254	6.9	8,039,665
2010 ¹	15,166,285	6,892,444	45.4	6,492,109	94.2	400,335	5.8	8,273,841
2011 ²	16,122,111	7,196,558	44.6	6,839,087	95.0	357,471	5.0	8,925,553
2012 ²	16,081,285	7,417,834	46.1	7,081,831	95.5	336,002	4.5	8,663,451
2013 ²	16,359,761	7,619,111	46.6	7,234,672	95.0	384,439	5.0	8,740,650
2014 ²	16,531,768	7,676,101	46.4	7,295,546	95.0	380,554	5.0	8,855,668
2013Q2 ²	16,357,652	7,496,047	45.8	7,105,072	94.8	390,975	5.2	8,861,605
2014Q2 ²	16,454,039	7,507,970	45.6	7,109,305	94.7	398,665	5.3	8,946,069
2015Q1 ²	16,638,339	7,838,029	47.1	7,415,584	94.6	422,446	5.4	8,800,309
2015Q2 ²	16,596,533	7,768,676	46.8	7,359,335	94.7	409,341	5.3	8,827,857

TABLE 2 - HISTORICAL TABLE OF NUMBER AND RATE OF UNEMPLOYMENT BY AGE (ALTERNATIVE ESTIMATES)

YEAR	AGE GROUP											
	TOTAL		15 - 19		20 - 24		25 - 29		30 - 39		40 & ABOVE	
	NO.	RATE	NO.	RATE	NO.	RATE	NO.	RATE	NO.	RATE	NO.	RATE
2008 ¹	433,042	6.3	68,487	27.1	166,409	20.8	93,202	10.9	58,838	3.6	46,107	1.4
2009 ¹	471,254	6.9	68,447	27.3	176,801	24.9	100,508	11.9	70,988	4.2	54,511	1.6
2010 ¹	400,335	5.8	59,339	26.5	154,788	22.5	84,777	10.5	59,041	3.6	42,390	1.2
2011 ²	357,471	5.0	45,900	21.0	151,882	20.7	73,545	8.7	55,880	3.2	30,263	0.8
2012 ²	336,056	4.5	47,690	23.6	136,553	19.5	63,135	7.3	52,541	2.8	36,084	1.0
2013 ²	384,439	5.0	52,652	22.9	157,353	21.7	69,413	8.5	58,352	3.1	46,669	1.2
2014 ²	380,615	5.0	54,300	25.9	151,742	22.2	73,421	9.3	57,906	3.0	43,185	1.1
2013Q2 ²	390,975	5.2	61,280	25.4	165,201	23.5	61,602	7.4	65,691	3.5	37,201	1.0
2014Q2 ²	398,665	5.3	55,541	27.0	149,858	21.4	84,739	11.0	67,757	3.5	40,770	1.0
2015Q1 ²	422,446	5.4	72,818	29.3	158,869	22.7	78,801	9.6	63,540	3.3	48,417	1.2
2015Q2 ²	409,341	5.3	52,674	25.7	163,952	24.2	85,724	10.3	61,855	3.1	45,136	1.1

1- Excluding Northern province

2 - All the districts are included

Table 3 - Currently Employed persons by Industry group (No. and percentage) (Based on ISIC Fourth Revision) - (Alternative estimates)

Year	Industry group																		
	Total	1	2	3	6	7	8	9	10	11	13	14	15	16	17	19	20	Other	
2013	No. 7,234,672	1,797,192	92,742	1,360,236	561,214	989,320	499,257	160,616	59,656	151,882	64,976	103,930	620,201	305,115	136,759	116,217	170,324	45,035	
	% 100.0	24.8	1.3	18.8	7.8	13.7	6.9	2.2	0.8	2.1	0.9	1.4	8.6	4.2	1.9	1.6	2.4	0.6	
2014	No. 7,295,546	1,716,094	74,133	1,396,819	579,647	970,132	510,933	175,533	66,645	157,549	49,443	109,006	637,806	319,326	135,245	135,982	204,541	56,715	
	% 100.0	23.5	1.0	19.1	7.9	13.3	7.0	2.4	0.9	2.2	0.7	1.5	8.7	4.4	1.9	1.9	2.8	0.8	
2013Q2	No. 7,105,072	1,886,572	108,109	1,310,706	563,430	993,573	498,841	165,477	61,020	145,285	69,693	88,535	527,870	267,970	128,629	113,272	126,219	49,873	
	% 100.0	26.6	1.5	18.4	7.9	14.0	7.0	2.3	0.9	2.0	1.0	1.2	7.4	3.8	1.8	1.6	1.8	0.7	
2014Q2	No. 7,109,305	1,661,053	64,663	1,326,868	560,905	986,968	468,404	146,567	76,456	157,900	54,193	110,756	633,359	294,558	136,378	137,194	236,557	56,524	
	% 100.0	23.4	0.9	18.7	7.9	13.9	6.6	2.1	1.1	2.2	0.8	1.6	8.9	4.1	1.9	1.9	3.3	0.8	
2015Q1	No. 7,415,584	1,812,189	79,101	1,422,450	549,459	1,003,333	508,642	175,489	59,362	153,395	60,394	122,615	669,872	270,824	130,546	136,674	199,113	62,127	
	% 100.0	24.4	1.1	19.2	7.4	13.5	6.9	2.4	0.8	2.1	0.8	1.7	9.0	3.7	1.8	1.8	2.7	0.8	
2015Q2	No. 7,359,335	1,739,275	37,715	1,376,727	572,636	939,485	503,050	181,732	59,123	164,580	64,885	133,071	661,235	371,554	137,363	154,186	191,603	71,114	
	% 100.0	23.6	0.5	18.7	7.8	12.8	6.8	2.5	0.8	2.2	0.9	1.8	9.0	5.0	1.9	2.1	2.6	1.0	

Note: The tabulation groups based on ISIC (Rev.4) are indicated as A,B,C.....U. Due to the limitations on reliability (based on CV),some of these groups have been combined.

Industry Group

1 Agriculture, forestry and fishing (A)

2 Mining & quarrying (B)

3 Manufacturing (C)

6 Construction, Electricity, gas, steam and air conditioning supply, Water supply, sewerage, waste management and remediation activities (D, E,F)

7 Wholesale and retail trade, repair of motor vehicles and motor cycles(G)

8 Transportation and storage (H)

9 Accommodation and food services activities (I)

10 Information and communication (J)

11 Financial and insurance activities (K)

13 Professional, scientific and technical activities (M)

14 Administrative and support service activities (N)

15 Public administration and defence compulsory social security (O)

16 Education (P)

17 Human health and social work activities (Q)

19 Other service activities (S)

20 Activities of households as employers; undifferentiated goods and services - producing activities of households for own use (T)

Other

Other

12 Real estate activities (L)

18 Arts, entertainment and recreation (R)

21 Activities of extra territorial organizations & bodies (U)