



DCS

---

# Sri Lanka Labour Force Survey

## Quarterly Report

### 2<sup>nd</sup> Quarter - 2022

---

# SRI LANKA LABOUR FORCE SURVEY

Quarterly Report – 2022  
Second Quarter

DEPARTMENT OF CENSUS & STATISTICS  
Ministry of Finance, Economic Stabilization and National Policies

ISBN 978 – 624 – 5919 – 89 – 5

## *Preface*

*Department of Census and Statistics has a long history of conducting the Labour Force Survey (LFS) in Sri Lanka. For instance, before 1990 this survey was conducted at every five yearly time intervals and from 1990 onward it was conducted as a regular survey to provide quarterly and annual labour force indicators. Labour Force Surveys provide various labour force indicators including employment and unemployment status of the country. Specially the survey provides necessary information to compile GDP and other important economic indicators of the country.*

*Various improvements were incorporated into the LFS during past period without breaking its core concepts and definitions which were used since 1990. In 2006, new modules were added to the LFS to capture the information on computer literacy, household economic activities and informal sector employment. The structure of the LFS questionnaire which was used during 2006-2012 was revised in 2013 with new improvements for concepts and classifications used. It is important to note that in 2013 the definition of working age population was revised from age ten and above population to age fifteen and above population.*

*In 2016, published labour force estimates from 2011 to 2015 were revised according to the population estimates of the Census of Population and Housing which was conducted in 2012. This revision was done along with the international best practices.*

*Another major achievement for data collection for LFS was taken place in 2017 with the introduction of Computer Assisted Data Collection (CAPI) using tablet computers. Before 2017 enumerators used paper based method and used survey questionnaires to record the answers given by the respondents. A known probability sampling technique is used to select the sample and the annual labour force indicators are compiled using 25,750 housing units covering the entire country. The enumerators who are permanent officers of the Department visited each of these randomly selected housing units to collect the information with a great effort. The field work of the survey for the second quarter 2022 was done in the month of April, May and June in year 2022. This report is based on the data collected in quarterly sample of 6,440 housing units.*

*I hope the information in this report is very valuable and useful to make evidence based decisions for various users to identify the issues as well as the changes in the labour market of Sri Lanka.*

*P.M.P. Anura Kumara  
Director General of Census & Statistics*

*Department of Census & Statistics,  
"Sankhyana Mandiraya",  
306/71,  
Polduwa Road,  
Baththaramulla*

*10.01.2023.*



## Acknowledgements

*This report is the hundred and twenty third in the series of the Quarterly Labour Force Survey which was commenced from the second quarter of 1990 and is being continued by the Department of Census and Statistics.*

*Planning and execution of the survey was done by the staff of the Sample Surveys Division under the guidance of Ms. K.M.D.S.D. Karunaratne, Additional Director General (Statistics) and Ms. K.A. Sajeewa Kodikara, Director (Statistics) and under the direction of Mr. W. Gnanathilaka and Ms. M.D.D.D. Deepawansa, Deputy Directors, Sample Surveys Division.*

*The survey activities were organized and supervised by Ms. H.M.D. Sepalika, Mr. A.K.D.C.N.S. Karunarithna, Mr. T.D.M.S.D. Perera, Ms. U.S. Dilrukshi, Mr. K.T. Sureskumar, Ms. M.W.L.C.M. Chandrarathne, Ms. P.D. Nanayakkara, Ms. R.P.M. Subhashini, Mr. H.M.S.C. Bandara, Ms. C.R. Liyanage and Ms. A.H.L.T. Sandaruwini, Statisticians, of the Sample Surveys Division.*

*The computer data processing and final tabulations were done by Mr. A.M.A.E. Atapattu Statistical Officer of the Sample Surveys Division, under the supervision of Mr. T.D.M.S.D. Perera, Statistician. The Statistical Officers, Statistical Assistants, Development Officers, Information and Communication Technology Assistants and Data Entry Operators/ Coding Clerks of the Sample Survey Division are acknowledged for their valuable contribution during the whole survey process.*

*The Information & Communication Technology Division, under the direction of Mr. P.M.R. Fernando, Additional Director General (ICT) and under the supervision of Mr. W.H.P.N. Weerasiri, Director (ICT), were responsible for implementing CAPI methodology and preparation of data collection and computer edits programmes. Developing of sample selection programme and its related computer software was done by Mr. K.M.R. Wickramasinghe, Deputy Director (ICT).*

*This publication was organized and prepared by Mr. T.D.M.S.D. Perera, Statistician, Sample Surveys Division, assisted by Mr. A.M.A.E. Atapattu Statistical Officer, under the guidance of Ms. K.A. Sajeewa Kodikara, Director (Statistics) and Mr. W. Gnanathilaka, Deputy Director (Statistics), Sample Surveys Division.*

*District staff of the Department who worked on the survey deserves a special word of thanks. The Deputy Directors/ Senior Statisticians/ Statisticians supervised the survey and field Statistical Officers, worked hard at the data collection stage, to make this survey a success. Printing of the report was done by the staff of Printing Division, under the supervision of Mr. M.L.K.P. Kumara, Statistician and under the direction of Ms. U.V. Jayakody, Director (Statistics).*

*Finally, I wish to express my appreciation to all the respondents of the survey for their valuable cooperation.*



## Selected Labour Force Indicators

Indicator	Year								
	2017	2018	2019	2020	2021	2020Q2	2021Q2	2022Q1	2022Q2
<b>Labour force participation rate</b>									
<b>By Gender</b>									
Total	54.1	51.8	52.3	50.6	49.9	50.2	49.8	51.2	50.1
Male	74.5	73.0	73.0	71.9	71.0	71.7	71.1	71.8	70.9
Female	36.6	33.6	34.5	32.0	31.8	31.6	30.9	33.6	32.1
<b>By residential sector</b>									
Total	54.1	51.8	52.3	50.6	49.9	50.2	49.8	51.2	50.1
Urban	50.5	49.6	50.2	47.0	46.9	46.4	46.6	48.4	47.6
Rural	54.8	52.3	52.7	51.3	50.5	51.0	50.5	51.8	50.6
<b>Unemployment Rate</b>									
<b>By Gender</b>									
Total	4.2	4.4	4.8	5.5	5.1	5.4	5.1	4.3	4.6
Male	2.9	3.0	3.3	4.0	3.7	4.1	3.8	3.0	3.7
Female	6.5	7.1	7.4	8.5	7.9	8.2	7.7	6.5	6.5
<b>By selected age Group (Year)</b>									
20 - 29	13.5	15.0	15.3	18.1	18.3	18.2	18.2	14.2	17.1
20 - 24	17.8	20.1	20.3	25.2	26.8	26.5	30.2	19.0	24.2
25 - 29	9.5	10.4	11.0	12.0	11.4	11.0	9.2	10.2	11.0
<b>By selected educational level</b>									
<b>GCE A/L and above</b>									
Total	8.1	9.1	8.5	9.8	9.1	10.0	9.1	7.5	7.8
Male	5.0	5.1	5.0	6.2	6.2	6.3	6.1	5.1	4.5
Female	11.3	13.2	11.9	13.6	12.2	14.2	12.5	9.9	11.3
<b>Employed population</b>									
<b>By Gender</b>									
Total	8,208,179	8,015,166	8,180,693	7,999,093	8,113,507	7,977,000	8,082,303	8,388,531	8,177,045
Male	5,279,158	5,300,310	5,368,896	5,372,947	5,414,280	5,369,119	5,504,060	5,492,427	5,421,108
Female	2,929,021	2,714,855	2,811,796	2,626,146	2,699,228	2,607,881	2,578,243	2,896,104	2,755,937
<b>By industry (Percentage)</b>									
Total	8,208,179	8,015,166	8,180,693	7,999,093	8,113,507	7,977,000	8,082,303	8,388,531	8,177,045
%	100.0	100.0	100.0	100.0	100.0	100.0	100.0	100.0	100.0
Agriculture	2,140,185	2,043,698	2,071,940	2,169,679	2,213,015	2,159,609	2,250,273	2,098,143	2,125,240
%	26.1	25.5	25.3	27.1	27.3	27.1	27.8	25.0	26.0
Industry	2,331,494	2,239,262	2,258,421	2,152,746	2,109,482	2,146,862	2,041,674	2,342,511	2,267,064
%	28.4	27.9	27.6	26.9	26.0	26.9	25.3	27.9	27.7
Services	3,736,500	3,732,206	3,850,332	3,676,668	3,791,011	3,670,528	3,790,355	3,947,877	3,784,742
%	45.5	46.6	47.1	46.0	46.7	46.0	46.9	47.1	46.3
<b>By no. of hours worked per week (percentage)</b>									
Total	100.0	100.0	100.0	100.0	100.0	100.0	100.0	100.0	100.0
0*	4.7	5.6	6.4	14.6	9.6	31.5	15.9	4.1	7.7
1 - 9	1.7	1.7	1.7	2.1	2.0	2.5	2.9	2.1	2.4
10 - 39	26.1	25.7	26.8	27.1	29.6	25.5	31.4	27.7	34.1
40 & above	67.5	66.9	65.1	56.2	58.7	40.6	49.8	66.1	55.8

\* has a job but not at work during the reference week

Note : Working age population considered as (age 15 & over population)



**Sri Lanka Labour Force Survey 2022**  
**Second Quarter**  
**Summary Statistics on Labour Force Characteristics**

**15 years & over population**

	Total	Male	Female	Urban	Rural
Population (15 years & over)	17,125,995	7,940,596	9,185,398	2,989,552	14,136,442
Labour force in this age group	8,575,758	5,628,003	2,947,755	1,424,032	7,151,726
Labour force participation rate	50.1	70.9	32.1	47.6	50.6
Employed population	8,177,045	5,421,108	2,755,937	1,363,826	6,813,219
Employment rate	95.4	96.3	93.5	95.8	95.3
Unemployed population	398,713	206,895	191,818	60,206	338,507
Unemployment rate	4.6	3.7	6.5	4.2	4.7
Not in labour force	8,550,237	2,312,593	6,237,643	1,565,520	6,984,717

**18 years & over population**

	Total	Male	Female	Urban	Rural
Population (18 years & over)	16,003,625	7,346,966	8,656,658	2,807,942	13,195,683
Labour force in this age group	8,539,805	5,598,192	2,941,613	1,421,801	7,118,004
Labour force participation rate	53.4	76.2	34.0	50.6	53.9
Employed population	8,147,486	5,397,691	2,749,795	1,361,595	6,785,891
Employment rate	95.4	96.4	93.5	95.8	95.3
Unemployed population	392,319	200,501	191,818	60,206	332,113
Unemployment rate	4.6	3.6	6.5	4.2	4.7
Not in labour force	7,463,820	1,748,774	5,715,045	1,386,141	6,077,679

**20 years & over population**

	Total	Male	Female	Urban	Rural
Population (20 years & over)	15,322,178	7,012,499	8,309,679	2,695,133	12,627,045
Labour force in this age group	8,425,878	5,528,205	2,897,673	1,409,015	7,016,863
Labour force participation rate	55.0	78.8	34.9	52.3	55.6
Employed population	8,060,025	5,345,455	2,714,570	1,352,325	6,707,700
Employment rate	95.7	96.7	93.7	96.0	95.6
Unemployed population	365,853	182,750	183,103	56,690	309,163
Unemployment rate	4.3	3.3	6.3	4.0	4.4
Not in labour force	6,896,299	1,484,294	5,412,006	1,286,118	5,610,182

## CONTENTS

### Page No.

Preface	iii
Acknowledgements	v
Highlights	vii
Summary Statistics	viii
Contents	ix
Labour Force	1
Employment	1
Unemployment	3

### Tables

#### Table No.

1. Historical table of Labour Force Status (current) of the Household Population, 15 years of Age and over - Both Sexes	4
1A. Historical table of Labour Force Status (current) of the Household Population, 15 years of Age and over – Male	4
1B. Historical table of Labour Force Status (current) of the Household Population, 15 years of Age and over – Female	4
2. Labour Force Status (current) of the Household Population 15 years of Age and over, by Age - Both Sexes	5
2A. Labour Force Status (current) of the Household Population 15 years of Age and over, by Age – Male	5
2B. Labour Force Status (current) of the Household Population 15 years of Age and over, by Age – Female	5
3. Historical table of Currently Employed persons by Age Groups (percentage) - Both Sexes	6
3A. Historical table of Currently Employed persons by Age Groups (percentage) – Male	6
3B. Historical table of Currently Employed persons by Age Groups (percentage) – Female	6
4. Historical table of Currently Employed persons by Level of Education (percentage) - Both Sexes	7
4A. Historical table of Currently Employed persons by Level of Education (percentage) – Male	7
4B. Historical table of Currently Employed persons by Level of Education (percentage) – Female	7
5. Historical table of Currently Employed persons by Employment Status (percentage) - Both Sexes	8
5A. Historical table of Currently Employed persons by Employment Status (percentage) – Male	8
5B. Historical table of Currently Employed persons by Employment Status (percentage) – Female	8
6. Currently Employed persons by Industry group (Based on ISIC Rev.4) – Both sexes	9
6A. Currently Employed persons by Industry group (Based on ISIC Rev.4) – Male	9
6B. Currently Employed persons by Industry group (Based on ISIC Rev.4) – Female	9
6C. Historical table of Currently Employed population by Major Industry group - Both sexes	10
6D. Historical table of Currently Employed population by Major Industry group (percentage) - Both sexes	10
7. Currently employed persons by Occupation group (Based on ISCO 08) - Both sexes	11
7A. Currently employed persons by Occupation group (Based on ISCO 08) – Male	11
7B. Currently employed persons by Occupation group (Based on ISCO 08) – Female	11
8. Currently Employed persons by hours per week actually worked at the main job and Major Industrial group (percentage) - Both Sexes	12
9. Historical table of Currently Unemployed persons by Age Groups (percentage) - Both Sexes	13
9A. Historical table of Currently Unemployed persons by Age Groups (percentage) – Male	13
9B. Historical table of Currently Unemployed persons by Age Groups (percentage) – Female	13
10. Historical table of Currently Unemployed persons by Level of Education (percentage) - Both Sexes	14
10A. Historical table of Currently Unemployed persons by Level of Education (percentage) – Male	14
10B. Historical table of Currently Unemployed persons by Level of Education (percentage) – Female	14
11. Currently Unemployed Persons by Sex and Duration of Unemployment	15
12. Standard error and coefficient of variation of selected variables	16

*Appendix 1: Explanatory Notes*

*Appendix 2: Alternative estimates of employment, unemployment and labour force characteristics*

### Labour Force

All persons aged 15 years & over who are currently economically active during the reference period (Labour Force = employed persons + unemployed persons)

#### Reference Period:

Previous week of the survey week (3<sup>rd</sup> week of every month)

#### Labour force participation rate (LFPR)

Labour force as a percentage of the population aged 15 years and over.

### Labour Force (Economically Active Population)

Table 1: Economically active population by gender and sector, second quarter - 2022

Sector	Economically Active Population					
	Total	%	Male	%	Female	%
<b>Sri Lanka</b>	8,575,758	100	5,628,003	65.6	2,947,755	34.4
<b>Urban</b>	1,424,032	100	955,015	67.1	469,017	32.9
<b>Rural</b>	6,754,322	100	4,434,436	65.7	2,319,886	34.3
<b>Estate</b>	397,404	100	238,552	60.0	158,852	40.0

Table 2: Economically inactive population by gender and sector, second quarter – 2022

Sector	Economically Inactive Population					
	Total	%	Male	%	Female	%
<b>Sri Lanka</b>	8,550,237	100	2,312,593	27.0	6,237,643	73.0
<b>Urban</b>	1,565,520	100	439,196	28.1	1,126,324	71.9
<b>Rural</b>	6,673,057	100	1,768,508	26.5	4,904,549	73.5
<b>Estate</b>	311,660	100	104,889	33.7	206,770	66.3

According to the Table 1, the estimated economically active population is about 8.6 million in the second quarter 2022. Of which 65.6 percent are males and 34.4 percent are females. The economically inactive population is about 8.6 million. Out of the economically inactive population 27.0 percent are males and 73.0 percent are females. (Table 2)

Table 3: LFPR by gender and year, 2017 - 2022Q2

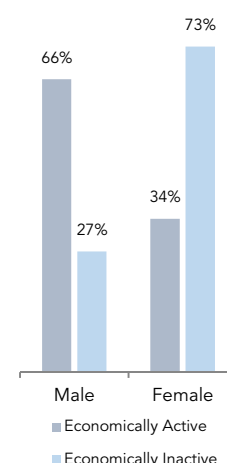
Year	Total	Male	Female
<b>2017</b>	54.1	74.5	36.6
<b>2018</b>	51.8	73.0	33.6
<b>2019</b>	52.3	73.0	34.5
<b>2020</b>	50.6	71.9	32.0
<b>2021</b>	49.9	71.0	31.8
<b>2020 Q2</b>	50.2	71.7	31.6
<b>2021 Q2</b>	49.8	71.1	30.9
<b>2022 Q1</b>	51.2	71.8	33.6
<b>2022 Q2</b>	50.1	70.9	32.1

Table 3 provides the information on LFPRs by gender since year 2017. Referring the Table 3, it is important to note that, male participation to the labour force is always higher than that of female.

Table 4: LFPR by age group and gender, second quarter – 2022

Age group (Years)	Total	Male	Female
<b>Sri Lanka</b>	50.1	70.9	32.1
15 - 19	8.3	10.8	5.7
20 - 24	49.3	62.9	36.6
25 - 29	64.8	89.6	44.0
30 - 34	63.5	94.7	39.3
35 - 39	68.1	96.0	44.5
40 - 44	69.2	96.8	44.8
45 - 49	69.9	94.7	47.4
50 - 54	67.0	94.7	42.9
55 - 59	57.5	84.0	34.6
60+	29.9	47.9	15.8

Figure 1: Distribution of economically active vs inactive population, second quarter 2022



Considering the Table 4, the distribution of LFPR by age group and by gender depicts high male participation compared to female in all age groups. The highest participation rate for male is reported from age group 40 - 44 years (96.8%), while that for female is reported from 45 - 49 age group (47.4%).

### Employment

#### Employed

Persons, who worked at least one hour during the reference period, as paid employees, employers, own account workers or contributing family workers are said to be employed. This also includes persons with a job but not at work during the reference period.

#### Employment Rate

The proportion of employed population to the total labour force.

Table 5: Distribution of employed population by main industry (second quarter 2021 – second quarter 2022)

Quarter	Sri Lanka	Major Industry Group		
		Agriculture	Industries	Services
2021 Q2	8,082,303	2,250,273	2,041,674	3,790,355
(%)	100.0	27.8	25.3	46.9
2021 Q3	8,043,868	2,390,849	1,969,427	3,683,592
(%)	100.0	29.7	24.5	45.8
2021 Q4	8,146,367	2,127,835	2,198,797	3,819,735
(%)	100.0	26.1	27.0	46.9
2022 Q1	8,388,531	2,098,143	2,342,511	3,947,877
(%)	100.0	25.0	27.9	47.1
2022 Q2	8,177,045	2,125,240	2,267,064	3,784,742
(%)	100.0	26.0	27.7	46.3

Table 5 shows the percentage distribution of employed population by main industry from second quarter 2021 to second quarter 2022. During second quarter of 2022, the total number of employed persons in Sri Lanka is estimated as 8.2 million. Of which, about 46.3 percent engaged in service sector, 27.7 percent in industry sector and 26.0 percent in agriculture sector. In the second quarter of 2022, there is an increase in employed persons in industry sector compared to the second quarter of 2021.

**Main industry categories and sub sectors**

**Agriculture**

Agriculture Forestry and Fishery (A)

**Industries**

1. Mining & Quarrying (B)
2. Manufacturing (C)
3. Construction, Electricity, gas, steam and air conditioning supply, Water supply, sewerage, waste management and remediation activities (D, E, F)

**Services**

1. Wholesale and retail trade, repair of motor vehicles and motor cycles (G)
2. Transportation and storage (H)
3. Accommodation and food services activities (I)
4. Information and communication (J)
5. Financial and insurance activities (K)
6. Professional, scientific and technical activities (M)
7. Administrative and support service activities (N)
8. Public administration and defence compulsory social security (O)
9. Education (P)
10. Human health and social work activities (Q)
11. Other service activities (S)
12. Activities of households as employers; undifferentiated goods and services - producing activities of households for own use (T)
13. Real estate activities (L) Arts, entertainment and recreation (R) Activities of extra territorial organizations & bodies (U)

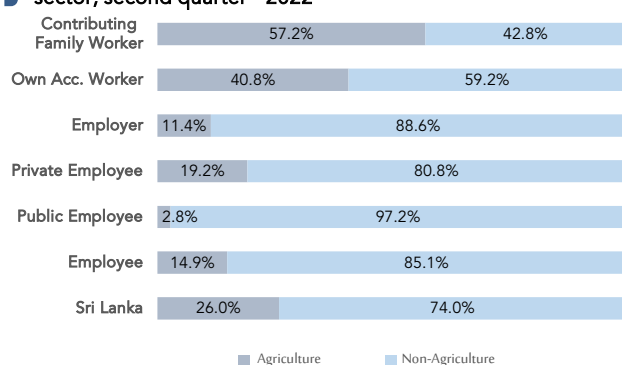
**Table 6: Distribution of employed population by employment status in agriculture and non - agriculture sectors, second quarter - 2022**

Employment Status	Sector					
	Sri Lanka		Agriculture		Non-Agriculture	
	No.	%	No.	%	No.	%
Sri Lanka	8,177,045	100.0	2,125,240	26.0	6,051,805	74.0
Employee	4,729,284	100.0	704,794	14.9	4,024,490	85.1
Public	1,234,407	100.0	34,726	2.8	1,199,681	97.2
Private	3,494,877	100.0	670,068	19.2	2,824,809	80.8
Employer	253,639	100.0	29,001	11.4	224,638	88.6
Own Account Worker	2,664,571	100.0	1,088,366	40.8	1,576,205	59.2
Contributing Family Worker	529,552	100.0	303,079	57.2	226,473	42.8

According to the Table 6 Majority of the workforce are private sector employees followed by own account workers. Non agriculture sector covers 74.0 percent of employed population in Sri Lanka, employees and own account workers are highly constraining in that sector.

Table 7 depicts the percentage distribution of male and female employed population by main industry sectors. Highest employment share is in service sector and this is true for both male & female, while the lowest shares are for agriculture sector. Among employed females 25.2 percent is in agriculture sector while this share is 26.4 percent for males.

**Figure 2 : Distribution of employed population by employment status and Agriculture/ Non- Agriculture sector, second quarter - 2022**



**Table 7: Percentage distribution of Employed population by major industry group & gender, second quarter – 2022**

Major Industry group	Sri Lanka	Gender	
		Male	Female
Sri Lanka	100.0	100.0	100.0
Agriculture	26.0	26.4	25.2
Industry	27.7	28.6	26.0
Services	46.3	45.0	48.8

## Unemployment

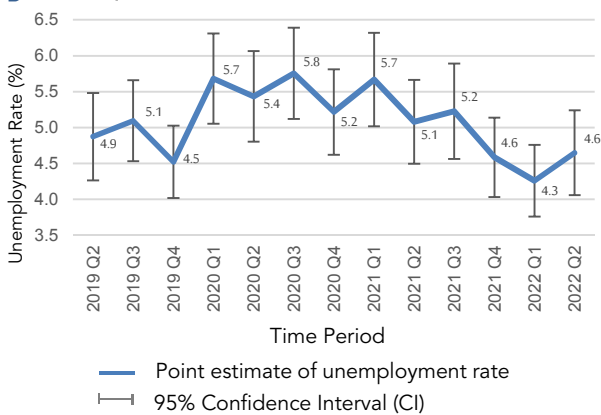
### Unemployed

Persons available and/or looking for work, and who did not work and taken steps to find a job during last four weeks and ready to accept a job given a work opportunity within next two weeks are defined as be unemployed.

### Unemployment Rate

The proportion of unemployed population to the total labour force.

**Figure 3 : Unemployment rates and it's 95% confidence intervals, 2019Q2 - 2022Q2**



The number of unemployed persons is estimated as 398,713 during the second quarter 2022. The unemployment rate for the second quarter 2022 is 4.6 percent.

As shown in Figure 3, it is very important to note that, when the changes in unemployment rate is explained the corresponding sampling errors<sup>1</sup> and the confidence limits need to be considered.

**Table 8: Number of unemployed and unemployment rate by age group and gender, second quarter - 2022**

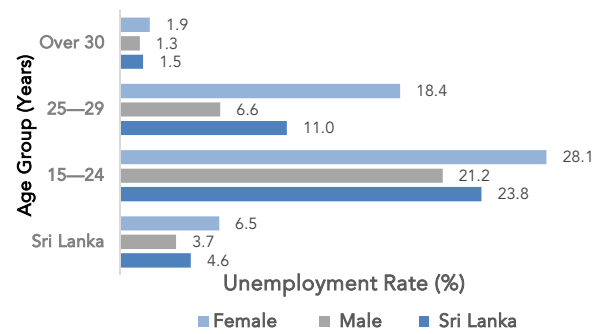
Age group (Years)	Unemployment Rate (%)			
	Sri Lanka		Gender	
	Number	Sri Lanka	Male	Female
Sri Lanka	398,713	4.6	3.7	6.5
15 - 24	204,741	23.8	21.2	28.1
25 - 29	90,599	11.0	6.6	18.4
Over 30	103,373	1.5	1.3	1.9

#### 1 Sampling error

When a sample, rather than the entire population, is surveyed, estimates differ from the true values of population they represent. This difference, or sampling error, occurs by chance, and its variability is measured by the sampling error of the estimate.

For more details, please refer the explanatory note given under the labour force link in the DCS website; [www.statistics.gov.lk](http://www.statistics.gov.lk)

**Figure 4 : Unemployment rate by age group and gender, second quarter 2022**



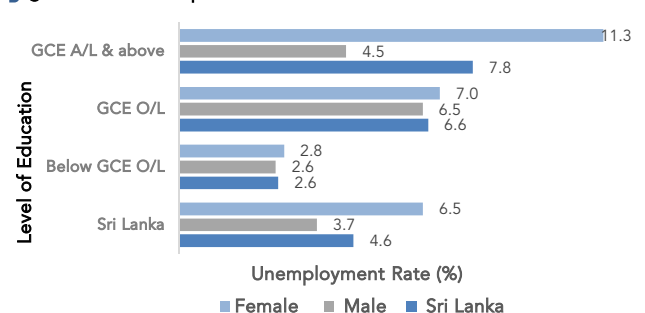
As per the table 8, overall unemployment rate reported for female is 6.5 percent and it is 3.7 percent for male. Youth unemployment rate (age 15 – 24 years) corresponding to the second quarter 2022 is 23.8 percent and that is the highest reported unemployment rate among all age groups. Further the unemployment rates for males and females are 21.2 and 28.1 percent respectively for age group 15 - 24.

The survey results further reveals that the unemployment among females is higher than that of males, in all age groups. Youth and female unemployment contribute more to the overall unemployment of the country.

**Table 9: Number of unemployed and unemployment rate by level of education, second quarter - 2022**

Level of Education	Unemployment Rate (%)			
	Sri Lanka		Gender	
	Number	Sri Lanka	Male	Female
Sri Lanka	398,713	4.6	3.7	6.5
Below GCE O/L	129,677	2.6	2.6	2.8
GCE O/L	103,261	6.6	6.5	7.0
GCE A/L & above	165,775	7.8	4.5	11.3

**Figure 5 : Unemployment rate by level of education and gender, second quarter 2022**



The highest unemployment rate is reported from the G.C.E.(A/L) and above group which is 7.8 percent. Corresponding percentages are 4.5 percent and 11.3 percent for males and females respectively. Female unemployment rates are higher than those of males in all levels of education.

Survey results further shows that the problem of unemployment is more acute in the case of educated females than educated males, which was observed consistently over the results of previous survey rounds as well.

Table 1 – Historical table of labour force status (current) of the household population, 15 years of age and over - Both sexes

Year	Household population: (15 years & over)	Labour force						Not in labour force Number
		Total labour force	Labour force partici: rate (%)	Employed		Unemployed		
				Number	Rate (% to total labour force)	Number	Rate (% to total labour force)	
2012	14,857,578	7,798,407	52.5	7,488,704	96.0	309,703	4.0	7,059,171
2013	14,959,065	8,033,804	53.7	7,681,279	95.6	352,526	4.4	6,925,260
2014	15,134,484	8,048,884	53.2	7,700,489	95.7	348,395	4.3	7,085,600
2015	15,281,945	8,214,473	53.8	7,830,976	95.3	383,496	4.7	7,067,473
2016	15,448,679	8,310,682	53.8	7,947,683	95.6	362,999	4.4	7,137,997
2017	15,843,735	8,566,686	54.1	8,208,179	95.8	358,507	4.2	7,277,049
2018	16,196,232	8,387,759	51.8	8,015,166	95.6	372,593	4.4	7,808,473
2019	16,424,016	8,592,010	52.3	8,180,693	95.2	411,318	4.8	7,832,006
2020	16,739,396	8,466,606	50.6	7,999,093	94.5	467,513	5.5	8,272,790
2021	17,133,659	8,553,290	49.9	8,113,507	94.9	439,783	5.1	8,580,369
2020Q2	16,793,046	8,435,358	50.2	7,977,000	94.6	458,359	5.4	8,357,687
2021Q2	17,092,123	8,514,766	49.8	8,082,303	94.9	432,463	5.1	8,577,357
2022Q1	17,105,140	8,761,803	51.2	8,388,531	95.7	373,272	4.3	8,343,337
2022Q2	17,125,995	8,575,758	50.1	8,177,045	95.4	398,713	4.6	8,550,237

Table 1 A– Historical table of labour force status (current) of the household population, 15 years of age and over - Male

Year	Household population: (15 years & over)	Labour force						Not in labour force Number
		Total labour force	Labour force partici: rate (%)	Employed		Unemployed		
				Number	Rate (% to total labour force)	Number	Rate (% to total labour force)	
2012	6,932,520	5,192,686	74.9	5,046,057	97.2	146,629	2.8	1,739,835
2013	6,926,750	5,187,873	74.9	5,024,341	96.8	163,533	3.2	1,738,877
2014	7,025,780	5,240,034	74.6	5,075,425	96.9	164,609	3.1	1,785,746
2015	7,036,944	5,255,593	74.7	5,097,798	97.0	157,794	3.0	1,781,352
2016	7,064,736	5,303,502	75.1	5,149,948	97.1	153,554	2.9	1,761,234
2017	7,292,047	5,434,510	74.5	5,279,158	97.1	155,352	2.9	1,857,537
2018	7,488,320	5,464,236	73.0	5,300,310	97.0	163,926	3.0	2,024,084
2019	7,610,113	5,554,192	73.0	5,368,896	96.7	185,296	3.3	2,055,920
2020	7,788,634	5,598,004	71.9	5,372,947	96.0	225,057	4.0	2,190,629
2021	7,915,659	5,621,223	71.0	5,414,280	96.3	206,943	3.7	2,294,436
2020Q2	7,799,716	5,595,969	71.7	5,369,119	95.9	226,850	4.1	2,203,747
2021Q2	8,043,095	5,722,184	71.1	5,504,060	96.2	218,124	3.8	2,320,910
2022Q1	7,887,172	5,664,059	71.8	5,492,427	97.0	171,632	3.0	2,223,113
2022Q2	7,940,596	5,628,003	70.9	5,421,108	96.3	206,895	3.7	2,312,593

Table 1B – Historical table of labour force status (current) of the household population, 15 years of age and over - Female

Year	Household population: (15 years & over)	Labour force						Not in labour force Number
		Total labour force	Labour force partici: rate (%)	Employed		Unemployed		
				Number	Rate (% to total labour force)	Number	Rate (% to total labour force)	
2012	7,925,058	2,605,721	32.9	2,442,647	93.7	163,074	6.3	5,319,336
2013	8,032,315	2,845,931	35.4	2,656,938	93.4	188,993	6.6	5,186,383
2014	8,108,704	2,808,850	34.6	2,625,064	93.5	183,786	6.5	5,299,854
2015	8,245,001	2,958,880	35.9	2,733,178	92.4	225,702	7.6	5,286,121
2016	8,383,943	3,007,180	35.9	2,797,735	93.0	209,445	7.0	5,376,764
2017	8,551,688	3,132,176	36.6	2,929,021	93.5	203,155	6.5	5,419,512
2018	8,707,912	2,923,523	33.6	2,714,855	92.9	208,667	7.1	5,784,390
2019	8,813,903	3,037,818	34.5	2,811,796	92.6	226,022	7.4	5,776,085
2020	8,950,763	2,868,602	32.0	2,626,146	91.5	242,456	8.5	6,082,161
2021	9,218,000	2,932,067	31.8	2,699,228	92.1	232,840	7.9	6,285,933
2020Q2	8,993,330	2,839,390	31.6	2,607,881	91.8	231,509	8.2	6,153,940
2021Q2	9,049,028	2,792,581	30.9	2,578,243	92.3	214,339	7.7	6,256,447
2022Q1	9,217,968	3,097,744	33.6	2,896,104	93.5	201,640	6.5	6,120,225
2022Q2	9,185,398	2,947,755	32.1	2,755,937	93.5	191,818	6.5	6,237,643

Table 2 - Labour force status (current) of the household population 15 years of age and over, by age – Both sexes

Age	Household population: (15 years & over)	Labour force						Not in labour force Number
		Total labour force	Labour force partici: rate (%)	Employed		Unemployed		
				Number	Rate (% to total labour force)	Number	Rate (% to total labour force)	
All ages	17,125,995	8,575,758	50.1	8,177,045	95.4	398,713	4.6	8,550,237
15 – 19 Yrs	1,803,817	149,880	8.3	117,020	78.1	32,860	21.9	1,653,937
20 – 24 Yrs	1,440,843	710,810	49.3	538,929	75.8	171,881	24.2	730,033
25 – 29 Yrs	1,275,206	826,234	64.8	735,635	89.0	90,599	11.0	448,971
30 – 39 Yrs	2,797,546	1,844,311	65.9	1,798,236	97.5	46,076	2.5	953,235
40+ Yrs	9,808,583	5,044,523	51.4	4,987,226	98.9	57,297	1.1	4,764,060

Table 2A - Labour force status (current) of the household population 15 years of age and over, by age – Male

Age	Household population: (15 years & over)	Labour force						Not in labour force Number
		Total labour force	Labour force partici: rate (%)	Employed		Unemployed		
				Number	Rate (% to total labour force)	Number	Rate (% to total labour force)	
All ages	7,940,596	5,628,003	70.9	5,421,108	96.3	206,895	3.7	2,312,593
15 – 19 Yrs	928,097	99,798	10.8	75,653	75.8	24,145	24.2	828,300
20 – 24 Yrs	697,639	438,809	62.9	348,611	79.4	90,197	20.6	258,830
25 – 29 Yrs	580,646	520,411	89.6	486,156	93.4	34,254	6.6	60,235
30 – 39 Yrs	1,253,036	1,195,754	95.4	1,167,323	97.6	28,430	2.4	57,282
40+ Yrs	4,481,178	3,373,232	75.3	3,343,364	99.1	29,868	0.9	1,107,946

Table 2B - Labour force status (current) of the household population 15 years of age and over, by age – Female

Age	Household population: (15 years & over)	Labour force						Not in labour force Number
		Total labour force	Labour force partici: rate (%)	Employed		Unemployed		
				Number	Rate (% to total labour force)	Number	Rate (% to total labour force)	
All ages	9,185,398	2,947,755	32.1	2,755,937	93.5	191,818	6.5	6,237,643
15 – 19 Yrs	875,719	50,082	5.7	41,367	82.6	8,715	17.4	825,638
20 – 24 Yrs	743,204	272,001	36.6	190,317	70.0	81,684	30.0	471,203
25 – 29 Yrs	694,559	305,823	44.0	249,479	81.6	56,344	18.4	388,736
30 – 39 Yrs	1,544,510	648,558	42.0	630,912	97.3	17,645	2.7	895,953
40+ Yrs	5,327,405	1,671,291	31.4	1,643,862	98.4	27,429	1.6	3,656,114

These figures are to be treated with caution as the corresponding CV (Coefficient of variation) values are high.

Table 3 – Historical table of currently employed persons by age groups (Percentage) - Both sexes

Year	All ages	Age groups				
		15 – 19 Yrs	20 – 24 Yrs	25 – 29 Yrs	30 – 39 Yrs	40+ Yrs
2015	100.0	2.2	7.5	9.7	24.5	56.1
2016	100.0	2.0	7.3	9.5	24.2	57.0
2017	100.0	2.1	7.6	9.2	23.4	57.7
2018	100.0	1.8	7.2	9.0	22.6	59.4
2019	100.0	1.9	7.1	9.3	22.6	59.1
2020	100.0	1.7	6.8	9.2	22.0	60.2
2021	100.0	1.4	6.3	9.4	21.1	61.8
2020Q2	100.0	1.8	6.5	9.1	22.3	60.3
2021Q2	100.0	1.3	5.7	9.9	20.7	62.4
2022Q1	100.0	1.5	7.1	9.5	21.3	60.6
2022Q2	100.0	1.4	6.6	9.0	22.0	61.0

Table 3A – Historical table of currently employed persons by age groups (Percentage) - Male

Year	All ages	Age groups				
		15 – 19 Yrs	20 – 24 Yrs	25 – 29 Yrs	30 – 39 Yrs	40+ Yrs
2015	100.0	2.3	7.3	9.7	24.4	56.2
2016	100.0	2.2	7.3	9.4	24.2	56.9
2017	100.0	2.3	7.5	9.4	23.5	57.3
2018	100.0	2.0	7.3	9.4	22.6	58.7
2019	100.0	2.1	7.2	9.4	22.3	59.0
2020	100.0	1.9	7.0	9.1	21.8	60.3
2021	100.0	1.6	6.4	9.4	20.5	62.0
2020Q2	100.0	2.0	6.4	9.2	21.7	60.7
2021Q2	100.0	1.5	5.8	10.0	20.1	62.7
2022Q1	100.0	1.6	7.1	9.6	21.1	60.5
2022Q2	100.0	1.4	6.4	9.0	21.5	61.7

Table 3B – Historical table of currently employed persons by age groups (Percentage) - Female

Year	All ages	Age groups				
		15 – 19 Yrs	20 – 24 Yrs	25 – 29 Yrs	30 – 39 Yrs	40+ Yrs
2015	100.0	2.1	7.8	9.6	24.7	55.9
2016	100.0	1.6	7.2	9.6	24.3	57.3
2017	100.0	1.7	7.8	9.0	23.2	58.3
2018	100.0	1.4	6.9	8.3	22.7	60.7
2019	100.0	1.4	7.0	9.1	23.1	59.4
2020	100.0	1.4	6.5	9.3	22.6	60.1
2021	100.0	1.1	6.0	9.3	22.3	61.4
2020Q2	100.0	1.4	6.8	8.9	23.6	59.4
2021Q2	100.0	0.7	5.7	9.7	22.1	61.8
2022Q1	100.0	1.4	7.0	9.2	21.7	60.7
2022Q2	100.0	1.5	6.9	9.1	22.9	59.6

These figures are to be treated with caution as the corresponding CV (Coefficient of variation) values are high.



Table 4 – Historical table of currently employed persons by level of education (Percentage) - Both sexes

Year	Total	Level of education			
		Grade 5 & Below	Grades 6 - 10	GCE (O.L)/ NCGE	GCE (A.L)/ HNCE & above
2015	100.0	16.7	47.4	17.3	18.6
2016	100.0	16.2	47.4	16.3	20.1
2017	100.0	15.8	46.1	17.3	20.8
2018	100.0	14.9	45.9	18.1	21.2
2019	100.0	14.0	45.8	17.4	22.8
2020	100.0	13.7	46.0	17.8	22.5
2021	100.0	13.0	45.7	17.6	23.8
2020Q2	100.0	13.6	46.3	18.4	21.8
2021Q2	100.0	12.5	46.1	17.5	24.0
2022Q1	100.0	11.9	45.6	18.0	24.4
2022Q2	100.0	13.1	45.3	17.7	23.8

Table 4A – Historical table of currently employed persons by level of education (Percentage) - Male

Year	Total	Level of education			
		Grade 5 & Below	Grades 6 - 10	GCE (O.L)/ NCGE	GCE (A.L)/ HNCE & above
2015	100.0	16.7	51.1	17.7	14.6
2016	100.0	16.1	51.1	16.7	16.1
2017	100.0	15.7	49.8	17.6	16.9
2018	100.0	14.7	49.7	18.8	16.7
2019	100.0	14.1	49.6	18.0	18.2
2020	100.0	13.8	49.8	18.3	18.1
2021	100.0	13.0	49.6	18.6	18.8
2020Q2	100.0	13.7	49.6	18.8	17.9
2021Q2	100.0	12.8	49.4	18.6	19.3
2022Q1	100.0	12.3	49.2	19.2	19.3
2022Q2	100.0	13.2	49.6	18.3	18.9

Table 4B – Historical table of currently employed persons by level of education (Percentage) - Female

Year	Total	Level of education			
		Grade 5 & Below	Grades 6 - 10	GCE (O.L)/ NCGE	GCE (A.L)/ HNCE & above
2015	100.0	16.6	40.4	16.7	26.3
2016	100.0	16.3	40.6	15.6	27.5
2017	100.0	16.1	39.4	16.8	27.7
2018	100.0	15.2	38.4	16.5	29.9
2019	100.0	13.8	38.4	16.3	31.6
2020	100.0	13.4	38.1	16.8	31.7
2021	100.0	12.8	37.8	15.5	33.8
2020Q2	100.0	13.4	39.3	17.4	29.8
2021Q2	100.0	11.8	39.3	15.0	33.9
2022Q1	100.0	11.2	38.9	15.7	34.2
2022Q2	100.0	12.9	37.0	16.7	33.5

Table 5 – Historical table of currently employed persons by employment status (Percentage) - Both sexes

Year	Total employed	Employee			Employer	Own account worker	Unpaid family worker
		Total	Public	Private			
2015	100.0	56.1	15.1	41.0	3.1	32.3	8.4
2016	100.0	57.8	14.6	43.3	2.7	31.6	7.8
2017	100.0	57.7	14.4	43.3	3.0	31.3	8.0
2018	100.0	57.8	14.5	43.3	2.8	32.3	7.2
2019	100.0	57.9	14.9	43.0	2.6	32.5	7.0
2020	100.0	57.5	14.8	42.7	2.5	33.2	6.8
2021	100.0	57.3	15.2	42.0	2.7	33.4	6.6
2020Q2	100.0	58.0	14.8	43.2	2.3	32.8	7.0
2021Q2	100.0	57.0	15.6	41.4	2.7	33.1	7.3
2022Q1	100.0	58.2	14.9	43.3	2.7	33.4	5.6
2022Q2	100.0	57.8	15.1	42.7	3.1	32.6	6.5

Table 5A – Historical table of currently employed persons by employment status (Percentage) - Male

Year	Total employed	Employee			Employer	Own account worker	Unpaid family worker
		Total	Public	Private			
2015	100.0	56.7	12.8	43.9	4.2	36.3	2.8
2016	100.0	58.9	12.4	46.4	3.7	34.7	2.7
2017	100.0	58.8	12.3	46.4	4.1	34.5	2.6
2018	100.0	57.8	12.0	45.8	3.7	36.0	2.5
2019	100.0	57.7	12.2	45.5	3.5	36.5	2.3
2020	100.0	56.7	12.0	44.7	3.4	37.5	2.4
2021	100.0	56.6	12.1	44.4	3.7	37.3	2.4
2020Q2	100.0	57.1	12.4	44.6	2.9	37.2	2.8
2021Q2	100.0	56.1	12.3	43.8	3.5	37.6	2.9
2022Q1	100.0	57.3	12.1	45.2	3.7	37.2	1.8
2022Q2	100.0	56.3	11.7	44.6	4.2	37.5	2.0

Table 5B – Historical table of currently employed persons by employment status (Percentage) - Female

Year	Total employed	Employee			Employer	Own account worker	Unpaid family worker
		Total	Public	Private			
2015	100.0	55.1	19.3	35.8	1.1	24.9	18.8
2016	100.0	55.9	18.5	37.4	0.9	25.9	17.2
2017	100.0	55.7	18.0	37.7	1.1	25.6	17.7
2018	100.0	57.8	19.3	38.5	1.0	24.9	16.3
2019	100.0	58.3	19.9	38.4	0.8	24.8	16.1
2020	100.0	59.0	20.5	38.5	0.8	24.4	15.8
2021	100.0	58.7	21.5	37.2	0.8	25.4	15.2
2020Q2	100.0	59.9	19.6	40.2	1.0	23.7	15.5
2021Q2	100.0	58.8	22.5	36.2	1.0	23.6	16.7
2022Q1	100.0	60.1	20.4	39.6	0.9	26.2	12.8
2022Q2	100.0	60.8	21.7	39.0	1.0	23.0	15.2

These figures are to be treated with caution as the corresponding CV (Coefficient of variation) values are high.

Table 6 - Currently Employed person by Industry group (Based on ISIC Fourth Revision) - both sexes

Year	Total	Industry Group																
		1	2	3	6	7	8	9	10	11	13	14	15	16	17	19	20	Other
2018	8,015,166	2,043,698	62,136	1,463,919	713,207	1,141,416	502,126	238,145	55,220	173,330	86,286	166,978	434,348	425,092	142,861	116,733	194,303	55,368
2019	8,180,693	2,071,940	60,902	1,504,314	693,205	1,134,496	514,469	232,344	64,382	187,933	90,317	205,009	436,175	425,931	169,232	135,247	186,970	67,828
2020	7,999,093	2,169,679	56,856	1,397,689	698,201	1,095,384	523,654	217,281	57,828	183,474	85,990	164,829	447,051	402,808	156,424	123,220	167,255	51,470
2021	8,113,507	2,213,015	54,586	1,362,311	692,585	1,153,516	481,703	214,497	72,881	182,313	80,762	136,073	490,106	423,135	174,539	128,418	201,726	51,342
2020Q2	7,977,000	2,159,609	50,717	1,434,736	661,410	1,070,356	525,323	213,496	50,468	179,197	92,850	161,055	426,347	427,455	179,937	116,665	176,960	50,417
2021Q2	8,082,303	2,250,273	56,277	1,315,591	669,807	1,097,913	504,156	222,172	71,008	218,047	91,583	122,019	499,076	400,053	199,863	144,145	173,057	47,263
2022Q1	8,388,531	2,098,143	71,451	1,512,110	758,950	1,181,749	545,886	257,773	60,658	172,988	85,652	156,784	466,703	479,552	170,702	177,600	126,530	65,301
2022Q2	8,177,045	2,125,240	59,727	1,480,582	726,755	1,162,580	464,286	212,196	63,800	173,541	83,466	134,193	448,765	447,196	192,711	158,388	172,043	71,576

Table 6A - Currently Employed person by Industry group (Based on ISIC Fourth Revision) - Male

Year	Total	Industry Group																
		1	2	3	6	7	8	9	10	11	13	14	15	16	17	19	20	Other
2018	5,300,310	1,270,968	59,514	785,112	688,318	835,444	483,618	153,022	38,942	92,422	53,152	118,324	286,200	135,153	52,200	83,418	119,488	45,016
2019	5,368,896	1,333,249	59,244	784,687	665,725	800,488	497,102	145,858	46,255	105,999	59,418	149,307	278,608	131,014	61,889	93,078	101,972	55,004
2020	5,372,947	1,404,424	54,650	769,527	670,928	800,735	504,586	143,909	43,545	108,800	55,021	119,004	284,605	120,956	58,231	94,149	101,098	38,778
2021	5,414,280	1,423,619	53,512	775,837	663,925	834,545	465,940	136,349	51,631	108,793	49,777	96,394	290,754	127,846	63,616	96,710	134,475	40,557
2020Q2	5,369,119	1,419,558	50,004	771,838	629,393	758,582	511,152	144,660	43,200	115,751	61,649	118,819	292,614	138,060	71,696	94,509	109,759	37,875
2021Q2	5,504,060	1,421,380	54,771	798,382	652,796	832,847	486,323	147,242	48,800	128,123	65,565	86,077	298,887	128,581	82,334	108,075	127,420	36,456
2022Q1	5,492,427	1,330,489	71,451	821,027	731,025	832,822	527,565	152,704	45,047	92,274	55,780	116,172	277,765	135,565	59,160	135,505	56,413	51,663
2022Q2	5,421,108	1,431,957	59,727	803,286	686,578	869,444	448,119	128,482	40,617	96,649	58,052	94,700	244,618	135,055	79,582	122,295	74,729	47,220

Table 6B - Currently Employed person by Industry group (Based on ISIC Fourth Revision) - Female

Year	Total	Industry Group																
		1	2	3	6	7	8	9	10	11	13	14	15	16	17	19	20	Other
2018	2,714,855	772,730	2,622	678,808	24,888	305,972	18,507	85,123	16,278	80,908	33,134	48,654	148,149	289,939	90,661	33,314	74,815	10,352
2019	2,811,796	738,692	1,658	719,627	27,479	334,008	17,368	86,486	18,126	81,934	30,899	55,701	157,567	294,916	107,344	42,169	84,998	12,825
2020	2,626,146	765,256	2,206	628,162	27,273	294,649	19,068	73,372	14,282	74,674	30,969	45,826	162,446	281,852	98,193	29,071	66,157	12,692
2021	2,699,228	789,396	1,074	586,474	28,660	318,971	15,763	78,147	21,250	73,519	30,985	39,679	199,352	295,289	110,923	31,708	67,251	10,785
2020Q2	2,607,881	740,052	713	662,898	32,017	311,774	14,170	68,837	7,268	63,446	31,201	42,236	133,733	289,395	108,241	22,156	67,201	12,542
2021Q2	2,578,243	828,893	1,505	517,209	17,011	265,067	17,833	74,930	22,208	89,924	26,017	35,942	200,189	271,472	117,529	36,071	45,637	10,807
2022Q1	2,896,104	767,654	..	691,083	27,925	348,927	18,320	105,069	15,610	80,713	29,873	40,612	188,938	343,987	111,542	42,095	70,117	13,638
2022Q2	2,755,937	693,282	..	677,297	40,177	293,135	16,167	83,714	23,183	76,892	25,415	39,493	204,147	312,141	113,130	36,093	97,314	24,357

These figures are to be treated with caution as the corresponding CV (Coefficient of variation) values are high.

.. Net reported

Note: These Industry groups are based on ISIC - Rev. 4

1 Agriculture, forestry and fishing (A)

2 Mining & quarrying (B)

3 Manufacturing (C)

6 Construction, Electricity, gas, steam and air conditioning supply, Water supply, sewerage, waste management and remediation activities (D, E,F)

7 Wholesale and retail trade, repair of motor vehicles and motor cycles(G)

8 Transportation and storage (H)

9 Accommodation and food services activities (I)

10 Information and communication (J)

11 Financial and insurance activities (K)

13 Professional, scientific and technical activities (M)

14 Administrative and support service activities (N)

15 Public administration and defence compulsory social security (O)

16 Education (P)

17 Human health and social work activities (O)

19 Other service activities (S)

20 Activities of households as employers; undifferentiated goods and services - producing activities of households for own use (T)

Other

Other

12 Real estate activities (L)

18 Arts, entertainment and recreation (R)

21 Activities of extra territorial organizations & bodies (U)

Table 6C: Historical table of currently employed population by major industry group - Both sexes

Major Industry Group	Year							
	2018	2019	2020	2021	2020Q2	2021Q2	2022Q1	2022Q2
Total	8,015,166	8,180,693	7,999,093	8,113,507	7,977,000	8,082,303	8,388,531	8,177,045
Agriculture	2,043,698	2,071,940	2,169,679	2,213,015	2,159,609	2,250,273	2,098,143	2,125,240
Industry	2,239,262	2,258,421	2,152,746	2,109,482	2,146,862	2,041,674	2,342,511	2,267,064
Services	3,732,206	3,850,332	3,676,668	3,791,011	3,670,528	3,790,355	3,947,877	3,784,742

Table 6D: Historical table of currently employed population by major industry group (percentage) - Both sexes

Major Industry Group	Year							
	2018	2019	2020	2021	2020Q2	2021Q2	2022Q1	2022Q2
Total	100.0	100.0	100.0	100.0	100.0	100.0	100.0	100.0
Agriculture	25.5	25.3	27.1	27.3	27.1	27.8	25.0	26.0
Industry	27.9	27.6	26.9	26.0	26.9	25.3	27.9	27.7
Services	46.6	47.1	46.0	46.7	46.0	46.9	47.1	46.3

Note: These Industry groups are based on ISIC - Rev. 4

### Agriculture

1. Agriculture Forestry and Fishery (A)

### Industries

1. Mining & Quarrying (B)
2. Manufacturing (C)
3. Construction, Electricity, gas, steam and air conditioning supply, Water supply, sewerage, waste management and remediation activities (D, E,F)

### Services

1. Wholesale and retail trade, repair of motor vehicles and motor cycles(G)
2. Transportation and storage (H)
3. Accommodation and food services activities (I)
4. Information and communication (J)
5. Financial and insurance activities (K)
6. Professional, scientific and technical activities (M)
7. Administrative and support service activities (N)
8. Public administration and defence compulsory social security (O)
9. Education (P)
10. Human health and social work activities (Q)
11. Other service activities (S)
12. Activities of households as employers; undifferentiated goods and services - producing activities of households for own use (T)
13. Real estate activities (L) Arts, entertainment and recreation (R) Activities of extra territorial organizations & bodies (U)

Table 7 - Currently Employed person by Occupation group (Based on ISCO 08) - Both sexes

Year	Total	Occupation group									
		1	2	3	4	5	6	7	8	9	0
2017	8,208,179	560,734	557,870	554,603	327,836	822,243	1,404,798	1,367,232	739,821	1,838,349	34,692
2018	8,015,166	619,312	558,574	662,323	286,493	701,676	1,308,806	1,297,912	706,185	1,836,250	37,635
2019	8,180,693	622,467	609,084	741,805	308,894	707,967	1,375,540	1,307,767	714,546	1,757,807	34,816
2020	7,999,093	512,087	531,298	695,206	306,448	756,851	1,373,582	1,222,380	729,394	1,833,523	38,325
2021	8,113,507	324,769	576,124	681,988	282,448	947,824	1,308,645	1,142,171	816,954	2,000,483	32,101
2020Q2	7,977,000	497,841	516,004	754,071	307,304	674,327	1,463,588	1,219,456	723,269	1,786,681	34,459
2021Q2	8,082,303	292,699	566,083	668,897	317,059	924,873	1,323,606	1,118,628	808,019	2,019,552	42,887
2022Q1	8,388,531	307,116	564,300	717,414	270,317	1,002,213	1,211,111	1,322,328	897,692	2,051,782	44,257
2022Q2	8,177,045	407,914	584,115	675,065	326,895	857,553	1,346,379	1,230,848	749,834	1,967,533	30,909

Table 7A - Currently Employed person by Occupation group (Based on ISCO 08) - Male

Year	Total	Occupation group									
		1	2	3	4	5	6	7	8	9	0
2017	5,279,158	406,096	211,033	355,936	154,428	553,098	892,473	899,082	631,271	1,144,468	31,274
2018	5,300,310	458,466	195,476	441,897	141,871	504,461	882,375	891,693	607,346	1,145,178	31,548
2019	5,368,896	453,211	228,884	477,666	148,506	494,410	943,543	892,716	619,409	1,080,828	29,724
2020	5,372,947	373,757	191,282	452,640	140,458	540,840	984,507	883,796	617,644	1,154,222	33,801
2021	5,414,280	261,533	211,883	440,246	133,690	639,288	981,016	843,075	644,676	1,228,363	30,511
2020Q2	5,369,119	349,202	176,175	501,713	144,961	482,506	1,046,715	876,369	628,655	1,133,669	29,154
2021Q2	5,504,060	239,158	217,735	431,059	155,014	679,659	996,627	870,358	633,074	1,241,306	40,070
2022Q1	5,492,427	229,872	186,894	444,281	129,044	663,771	875,013	941,093	726,382	1,259,242	36,836
2022Q2	5,421,108	324,390	207,701	427,088	165,883	584,665	1,005,351	897,694	577,697	1,203,548	27,091

Table 7B - Currently Employed person by Occupation group (Based on ISCO 08) - Female

Year	Total	Occupation group									
		1	2	3	4	5	6	7	8	9	0
2017	2,929,021	154,639	346,838	198,667	173,408	269,145	512,325	468,150	108,550	693,881	3,418
2018	2,714,855	160,846	363,098	220,426	144,622	197,215	426,431	406,219	98,839	691,072	6,088
2019	2,811,796	169,256	380,200	264,139	160,388	213,557	431,997	415,051	95,138	676,978	5,092
2020	2,626,146	138,329	340,016	242,566	165,990	216,011	389,075	338,584	111,750	679,301	4,524
2021	2,699,228	63,236	364,242	241,742	148,758	308,536	327,629	299,096	172,278	772,120	1,590
2020Q2	2,607,881	148,639	339,829	252,359	162,343	191,821	416,873	343,087	94,614	653,011	5,305
2021Q2	2,578,243	53,541	348,348	237,838	162,045	245,214	326,979	248,270	174,945	778,246	2,817
2022Q1	2,896,104	77,244	377,407	273,134	141,272	338,442	336,098	381,235	171,311	792,540	7,421
2022Q2	2,755,937	83,525	376,414	247,977	161,012	272,887	341,028	333,154	172,137	763,985	3,818

These figures are to be treated with caution as the corresponding CV (Coefficient of variation) values are high.

1	Managers, Senior Officials and Legislators	6	Skilled Agricultura, Forestry and Fishery workers
2	Professionals	7	Craft and Related Trades workers
3	Technicians and Associate Professionals	8	Plant and Machine operators and Assemblers
4	Clerks and Clerical support workers	9	Elementary occupations
5	Services and Sales workers	0	Armed Forces Occupations & unidentified occupations

**Table 8 - Currently employed persons by hours per week actually worked at the main job and major industrial group (Percentage) - Both sexes**

Major Industrial group	Total	0 *	1 - 9	10 - 19	20 - 29	30 - 39	40 - 49	50 & Over
Total	100.0	7.7	2.4	6.8	11.2	16.1	30.2	25.7
1	100.0	7.6	4.8	10.6	17.3	19.0	24.1	16.6
2	100.0	19.1	..	4.9	3.6	25.8	25.0	21.6
3	100.0	7.1	1.5	5.2	8.5	12.9	33.9	30.9
6	100.0	14.4	2.4	7.5	13.7	16.7	28.9	16.3
7	100.0	4.8	0.8	3.0	7.4	13.8	27.6	42.6
8	100.0	8.1	1.8	9.0	12.2	14.5	26.4	28.0
9	100.0	10.2	4.2	8.5	6.9	7.6	23.9	38.6
10	100.0	3.6	2.0	2.3	1.9	20.2	44.9	25.1
11	100.0	2.5	..	2.6	6.7	12.4	55.3	20.6
13	100.0	1.9	..	4.8	5.9	12.8	42.0	32.5
14	100.0	13.6	2.7	5.8	6.7	9.4	35.0	26.9
15	100.0	4.5	0.6	3.6	5.0	6.7	52.7	26.9
16	100.0	10.3	2.0	7.1	12.1	39.7	23.5	5.3
17	100.0	2.5	1.1	1.6	4.1	7.5	39.5	43.6
19	100.0	9.5	2.6	11.2	11.9	13.4	27.9	23.3
20	100.0	7.9	1.8	7.5	12.8	15.4	22.8	31.9
Other	100.0	7.0	4.3	7.3	10.0	13.2	35.5	22.6

\* Has a job but not at work during the reference week

.. Net reported

These figures are to be treated with caution as the corresponding CV (Coefficient of variation) values are high.

#### Industry group

- 1 Agriculture, forestry and fishing (A)
- 2 Mining & quarrying (B)
- 3 Manufacturing (C)
- 6 Construction, Electricity, gas, steam and air conditioning supply, Water supply, sewerage, waste management and remediation activities (D, E,F)
- 7 Wholesale and retail trade, repair of motor vehicles and motor cycles(G)
- 8 Transportation and storage (H)
- 9 Accommodation and food services activities (I)
- 10 Information and communication (J)
- 11 Financial and insurance activities (K)
- 13 Professional, scientific and technical activities (M)
- 14 Administrative and support service activities (N)
- 15 Public administration and defence compulsory social security (O)
- 16 Education (P)
- 17 Human health and social work activities (Q)
- 19 Other service activities (S)
- 20 Activities of households as employers; undifferentiated goods and services - producing activities of households for own use (T)
- Other
  - Other
  - 12 Real estate activities (L)
  - 18 Arts, entertainment and recreation (R)
  - 21 Activities of extra territorial organizations & bodies (U)

Table 9 – Historical table of currently unemployed persons by age groups (Percentage) - Both Sexes

Year	Total	Age groups				
		15 – 19 Yrs	20 – 24 Yrs	25 – 29 Yrs	30 – 39 Yrs	40 + Yrs
2015	100.0	14.5	37.4	20.5	15.8	11.8
2016	100.0	16.1	39.7	21.1	13.2	9.8
2017	100.0	12.8	37.7	22.2	14.8	12.4
2018	100.0	14.1	38.9	22.5	15.0	9.5
2019	100.0	13.0	36.0	22.8	14.3	13.8
2020	100.0	13.5	39.3	21.5	13.8	12.0
2021	100.0	8.9	42.5	22.2	15.2	11.1
2020Q2	100.0	14.9	40.8	19.5	13.0	11.8
2021Q2	100.0	9.8	46.4	18.7	14.8	10.4
2022Q1	100.0	8.9	37.2	24.1	15.3	14.5
2022Q2	100.0	8.2	43.1	22.7	11.6	14.4

Table 9A– Historical table of currently unemployed persons by age groups (Percentage) – Male

Year	Total	Age groups				
		15 – 19 Yrs	20 – 24 Yrs	25 – 29 Yrs	30 – 39 Yrs	40 + Yrs
2015	100.0	21.7	39.9	14.6	12.6	11.2
2016	100.0	23.0	42.8	16.9	7.7	9.6
2017	100.0	18.1	40.3	19.7	10.8	11.1
2018	100.0	20.5	40.9	17.5	10.7	10.5
2019	100.0	18.3	38.9	19.5	8.3	15.0
2020	100.0	18.8	41.0	18.6	11.9	9.7
2021	100.0	12.3	45.0	20.0	12.1	10.6
2020Q2	100.0	22.2	40.9	15.3	11.8	9.7
2021Q2	100.0	13.0	48.4	14.4	11.6	12.6
2022Q1	100.0	16.8	37.0	21.9	10.6	13.7
2022Q2	100.0	11.7	43.6	16.6	13.7	14.4

Table 9B – Historical table of currently unemployed persons by age groups (Percentage) – Female

Year	Total	Age groups				
		15 – 19 Yrs	20 – 24 Yrs	25 – 29 Yrs	30 – 39 Yrs	40 + Yrs
2015	100.0	9.4	35.6	24.6	18.1	12.2
2016	100.0	11.1	37.5	24.2	17.2	10.0
2017	100.0	8.8	35.7	24.2	17.9	13.5
2018	100.0	9.1	37.3	26.5	18.4	8.7
2019	100.0	8.7	33.6	25.5	19.3	12.9
2020	100.0	8.5	37.7	24.1	15.6	14.1
2021	100.0	5.8	40.3	24.2	18.0	11.6
2020Q2	100.0	7.7	40.7	23.5	14.2	13.9
2021Q2	100.0	6.5	44.3	23.0	17.9	8.3
2022Q1	100.0	2.2	37.3	26.0	19.4	15.2
2022Q2	100.0	4.5	42.6	29.4	9.2	14.3

These figures are to be treated with caution as the corresponding CV (Coefficient of variation) values are high.

Table 10 – Historical table of currently unemployed persons by level of education (Percentage) - Both sexes

Year	Total	Level of education			
		Grade 5 & below	Grades 6 - 10	GCE(O/L) NCGE	GCE(A/L) HNCE & Above
2015	100.0	2.5	34.4	24.4	38.7
2016	100.0	2.7	35.4	22.1	39.8
2017	100.0	3.1	30.3	24.7	41.9
2018	100.0	2.2	30.5	21.4	45.8
2019	100.0	2.9	31.4	23.9	41.9
2020	100.0	2.2	32.6	23.5	41.7
2021	100.0	1.4	29.6	24.9	44.1
2020Q2	100.0	1.4	32.9	23.5	42.1
2021Q2	100.0	1.4	28.2	25.4	44.9
2022Q1	100.0	2.7	31.5	21.4	44.4
2022Q2	100.0	3.3	29.2	25.9	41.6

Table 10A – Historical table of currently unemployed persons by level of education (Percentage) – Male

Year	Total	Level of education			
		Grade 5 & below	Grades 6 - 10	GCE(O/L) NCGE	GCE(A/L) HNCE & Above
2015	100.0	1.7	44.1	30.9	23.4
2016	100.0	1.5	48.2	23.9	26.4
2017	100.0	2.0	37.5	30.0	30.5
2018	100.0	3.1	43.1	25.0	28.9
2019	100.0	2.9	42.2	27.0	28.0
2020	100.0	2.3	41.5	27.7	28.5
2021	100.0	1.8	36.0	29.9	32.3
2020Q2	100.0	1.8	43.5	26.1	28.6
2021Q2	100.0	2.4	33.8	32.1	31.7
2022Q1	100.0	3.5	35.2	28.4	33.0
2022Q2	100.0	4.6	38.9	33.3	23.2

Table 10B – Historical table of currently unemployed persons by level of education (Percentage) – Female

Year	Total	Level of education			
		Grade 5 & below	Grades 6 - 10	GCE(O/L) NCGE	GCE(A/L) HNCE & Above
2015	100.0	3.0	27.7	19.9	49.4
2016	100.0	3.6	26.0	20.8	49.6
2017	100.0	3.9	24.8	20.7	50.7
2018	100.0	1.5	20.6	18.7	59.2
2019	100.0	2.9	22.5	21.4	53.3
2020	100.0	2.2	24.2	19.7	53.9
2021	100.0	1.0	23.9	20.5	54.6
2020Q2	100.0	1.0	22.5	21.0	55.5
2021Q2	100.0	0.4	22.5	18.6	58.4
2022Q1	100.0	2.1	28.3	15.4	54.1
2022Q2	100.0	1.9	18.7	17.9	61.4

These figures are to be treated with caution as the corresponding CV (Coefficient of variation) values are high.



Table 11 – Currently unemployed persons by sex and duration of unemployment

Sex	Total	Duration (2022 2 <sup>nd</sup> Quarter)		
		Less than 6 months	6 to less than 12 months	12+ months
Both sexes	398,713	141,211	110,050	147,452
%	100.0	35.4	27.6	37.0
Male	206,895	96,346	52,098	58,451
%	100.0	46.6	25.2	28.3
Female	191,818	44,865	57,952	89,001
%	100.0	23.4	30.2	46.4

Table 12 – Standard error and coefficient of variation of selected variables

	Estimated Value	Standard Error	Coefficient of Variation (%)	Estimated Value (Ratio)	Standard Error	Coefficient of Variation (%)
<b>General labour force characteristics</b>						
Population ( 15 years & over)	17,125,995	164,789	1.0			
Employed Population	8,177,045	114,472	1.4			
Unemployed Population	398,713	26,801	6.7			
Employment Rate				95.4	0.30	0.32
Unemployment Rate				4.6	0.30	6.48
Labour Force	8,575,758	118,825	1.4			
Not in Labour Force	8,550,237	116,555	1.4			
<b>Employed persons by major industry Groups</b>						
1	2,125,240	86,011	4.0			
2	59,727	13,587	22.7			
3	1,480,582	55,965	3.8			
6	726,755	34,405	4.7			
7	1,162,580	47,286	4.1			
8	464,286	24,427	5.3			
9	212,196	19,675	9.3			
10	63,800	10,707	16.8			
11	173,541	18,751	10.8			
13	83,466	11,277	13.5			
14	134,193	14,042	10.5			
15	448,765	27,759	6.2			
16	447,196	29,105	6.5			
17	192,711	23,983	12.4			
19	158,388	15,157	9.6			
20	172,043	17,863	10.4			
Other	71,576	11,958	16.7			
<b>Unemployed persons by level of education</b>						
Below grade 6	13,337	4,566	34.2			
Grade 6 - 10	116,340	10,174	8.7			
G.C.E.(O/L)/N.C.G.E.	103,261	11,757	11.4			
G.C.E.(A/L)/H.N.C.E. & above	165,775	15,089	9.1			
<b>Industry group</b>						
1	Agriculture, forestry and fishing (A)					
2	Mining & quarrying (B)					
3	Manufacturing (C)					
6	Construction, Electricity, gas, steam and air conditioning supply, Water supply, sewerage, waste management and remediation activities (D, E,F)					
7	Wholesale and retail trade, repair of motor vehicles and motor cycles(G)					
8	Transportation and storage (H)					
9	Accommodation and food services activities (I)					
10	Information and communication (J)					
11	Financial and insurance activities (K)					
13	Professional, scientific and technical activities (M)					
14	Administrative and support service activities (N)					
15	Public administration and defence compulsory social security (O)					
16	Education (P)					
17	Human health and social work activities (Q)					
19	Other service activities (S)					
20	Activities of households as employers; undifferentiated goods and services - producing activities of households for own use (T)					
Other	Other Real estate activities (L) Arts, entertainment and recreation (R) Activities of extra territorial organizations & bodies (U)					

## Special Statistical Appendix

### Explanatory Notes

---

#### Coverage

Sri Lanka Labour Force Survey was designed to measure the levels and trends of employment, unemployment and labour force in Sri Lanka. This survey is being conducted quarterly, since the first quarter of 1990.

This quarterly survey of households is conducted through a scientifically selected sample designed to represent the civilian non-institutional population. Respondents are interviewed to obtain information about the employment status etc. of each member of the household 15 years of age and older.

The field work of the survey is done during the third week of each month, Monday through Sunday. This is known as the "survey week". The inquiry relates to activity or status are referred in the preceding week of the survey week; referred to as the "reference week".

The concepts and definitions underlying labour force data are as follows.

#### Concepts & Definitions

1. **Labour force:** The labour force is composed of the economically active population 15 years of age and over.
2. **The Economically Active Population:** is defined as those persons who are/were employed or unemployed during the reference period of the survey.
3. **Employed:** Persons, who during the reference period, worked as paid employees, employers, own account workers (self employed), or unpaid family workers are said to be employed. This includes persons with a job but not at work during the reference period.
4. **Unemployed:** Persons who are seeking and available for work, but had no employment during the reference period.
5. **Currently Economically Active:** A person who was employed or unemployed during the current reference period is considered to be currently economically active.
6. **Not in the Labour Force (not economically active):** Persons who were neither working nor available/looking for work are classified as "not in the labour force". Persons are not in the labour force for such reasons as: full time care of the household, full – time students, retired or old age, infirmed or disabled, or are not interested in working for one reason or another. Current and Usual definitions apply.
7. **Criteria for classification of underemployment:** In order to classify an employed persons as visibly underemployed,

*Explanatory Notes (Page 2)****(i) If the person has worked less than the normal duration in his/her main activity***

In Sri Lanka scenario, 35 hours per week is taken as the cut-off point applicable to all workers, except government teachers. As in practice, though teachers do have a normal duration of work which is below the general cut-off point, they should be on a full time schedule according to the nature of their job. Further, those who do have a secondary job or those who are employers, were considered as having worked the normal duration in their respective activity.

Therefore, if the person has worked less than the normal duration in his/her activity (as described above), then the person is further questioned to ascertain whether he/She is prepared and available for further work if provided. Such persons are considered underemployed in their respective employment.

***(ii) If the person has worked more than the normal duration in his/her activity***

If the person has worked even more than 35 hours as usually, but he has worked less than 35 hours actually in the reference period, only due to the off season or bad weather, such persons were also further questioned to check their underemployment situation, considering them as a special category.

**8. Informal Sector Employment**

In order to classify a person to be employed in informal sector employment, following information were used.

- (i) Registration of the organization
- (ii) Accounts keeping practices of the organization
- (iii) Total number of regular employees of the organization.

## Reliability of the estimates

Statistics based on the quarterly labour force data are subject to both sampling and non - sampling errors. When a sample rather than the entire population is surveyed, there is a chance that the sample estimates may differ from the "true" population values they represent.

The exact differences or sampling error, varies depending on the particular sample selected, and this variability is measured by the standard error of the estimate. There is about a 95 percent chance, or level of confidence, that an estimate based on a sample will differ by no more than 1.96 standard errors from the "true" population value, because of sampling error. Analyses relating to the Labour Force Survey are generally conducted at the 95 percent level of confidence.

For example, the confidence interval for the quarterly unemployment rate is calculated as follows

When the estimated unemployment rate is 4.5 and standard error of unemployment rate is 0.275 then 95% confidence interval

Estimated value (of the unemployment rate)  $\pm$  (standard error) \* (1.96)

$$4.5 \pm (0.275) * (1.96)$$

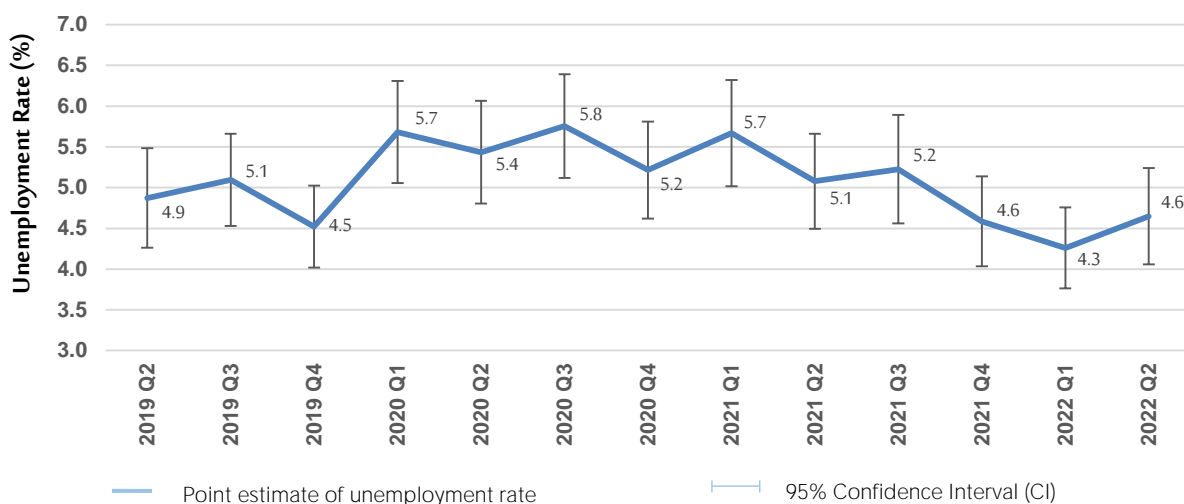
$$(4.5 \pm 0.539)$$

*Explanatory Notes (Page 3)*

This means, the 95 percent confidence interval on the quarterly unemployment rate could range from (4.0 to 5.0). This implies that there is about 95 percent chance that the "true" unemployment rate lies within this interval. This range includes all the values range from 4.0 to 5.0. When the comparison of this estimate is done between two quarters, if any of the value within the 95 percent confidence interval of one quarter overlaps with the confidence interval of the other , it means that the estimates of this two quarters are not significantly different.

Therefore, in each quarterly labour force report, a separate table is given including approximate standard errors for some selected variables, so that users could understand this statistical scenario clearly.

***Distribution of unemployment rates and 95% confidence intervals (2019Q2 - 2022Q2)***



As seen in figure, it is very important to note that, there were no statistically significant differences between the unemployment rates reported in different time periods of 2019/2022, when sampling error was considered.

**Change in survey schedule**

Current survey concepts and methods are very similar to those introduced at the beginning of the survey in 1990. However, some changes have been made over the years to improve the accuracy and usefulness of the data. In January 2006, some improvements were made to the labour force survey schedule in order to fulfill the requirements of data users and also to provide additional information for planning purposes. The revision was made focusing on literacy, household economic activities, and informal sector employment and under employment etc.

From January , 2013 onwards, the lower bound of working age populations is considered as age 15, hence age 15 and over population is considered as working age population. The survey schedule is updated to obtain more precise information on following age, informal employment, informal sector, secondary occupation, wages & income , unemployment & trainings.

**New Industry & Occupation classifications**

From January 2013 onward the survey uses new industry & occupation classifications, such as  
 SLIC Rev 4:- Sri Lanka Standard Industry Classification based on International Standard Industry classification - Rev.4 (ISIC Rev 4)  
 SLSCO 08:- Sri Lanka Standard Classification of Occupation-2008 based on International Standard Classification of Occupation-2008 (ISCO 2008)

*Explanatory Notes (Page 4)*

Note :

It is important to note that, all the data published here are the estimates based on a sample survey and these are subject to sampling errors. These sampling errors can be statistically evaluated from the survey results. Therefore, sampling error is normally measured in terms of the standard error of the particular variable. Standard error could be used to calculate the confidence limits with a prescribed accuracy where the true value of the estimates lies.

Further reliability of the estimates can be expressed in terms of Coefficient of Variation (CV). The CV is a relative measure of the sampling error and is calculated as sampling error divided by the expected value of the given characteristic.

In view of this, following table is given to show the estimates for some selected variables, its standard error, CV and 95% Confidence interval.

It is also important to note that all the estimates we publish in this report are subject to sampling error and one should be cautious in the interpretation of results, especially with respect to the trends over time.

**Estimate of Confidence Intervals for some selected characteristics**

Year	Labour Force					Employed				
	No.	Standard error	C.V (%)	95% C.I.		No.	Standard error	C.V (%)	95% C.I.	
				Lower	Upper				Lower	Upper
2014	8,048,884	60,868	0.76	7,929,525	8,168,243	7,700,489	58,417	0.76	7,585,937	7,815,042
2015	8,214,473	52,021	0.63	8,112,463	8,316,483	7,830,976	50,426	0.64	7,732,093	7,929,860
2016	8,310,682	66,023	0.79	8,181,215	8,440,148	7,947,683	64,616	0.81	7,820,977	8,074,389
2017	8,566,686	49,822	0.58	8,468,989	8,664,382	8,208,179	48,420	0.59	8,113,231	8,303,126
2018	8,387,759	57,008	0.68	8,275,971	8,499,546	8,015,166	55,036	0.69	7,907,245	8,123,087
2019	8,592,010	54,293	0.63	8,485,546	8,698,475	8,180,693	52,108	0.64	8,078,513	8,282,872
2020	8,466,606	58,917	0.70	8,351,075	8,582,137	7,999,093	56,610	0.71	7,888,086	8,110,101
2021	8,553,290	58,311	0.68	8,438,947	8,667,633	8,113,507	56,072	0.69	8,003,555	8,223,460
2020Q2	8,435,358	110,818	1.31	8,217,707	8,653,010	7,977,000	105,088	1.32	7,770,603	8,183,397
2021Q2	8,514,766	117,564	1.38	8,283,862	8,745,670	8,082,303	112,486	1.39	7,861,372	8,303,233
2022Q1	8,761,803	109,195	1.25	8,547,341	8,976,265	8,388,531	106,255	1.27	8,179,844	8,597,218
2022Q2	8,575,758	118,825	1.39	8,342,379	8,809,137	8,177,045	114,472	1.40	7,952,217	8,401,873

Year	Unemployed					Unemployment Rate				
	No.	Standard error	C.V (%)	95% C.I.		Rate	Standard error	C.V (%)	95% C.I.	
				Lower	Upper				Lower	Upper
2014	348,395	12,697	3.64	323,497	373,293	4.3	0.2	3.50	4.0	4.6
2015	383,496	12,283	3.20	359,410	407,583	4.7	0.1	3.11	4.4	5.0
2016	362,999	11,186	3.08	341,064	384,933	4.4	0.1	3.02	4.1	4.6
2017	358,507	11,347	3.17	336,256	380,758	4.2	0.1	3.08	3.9	4.4
2018	372,593	11,350	3.05	350,337	394,849	4.4	0.1	2.94	4.2	4.7
2019	411,318	12,814	3.12	386,191	436,444	4.8	0.1	3.00	4.5	5.1
2020	467,513	14,029	3.00	440,004	495,022	5.5	0.2	2.88	5.2	5.8
2021	439,783	13,930	3.17	412,468	467,097	5.1	0.2	3.05	4.8	5.4
2020Q2	458,359	28,417	6.20	402,546	514,172	5.4	0.3	5.91	4.8	6.1
2021Q2	432,463	26,450	6.12	380,513	484,413	5.1	0.3	5.85	4.5	5.7
2022Q1	373,272	22,835	6.12	328,423	418,121	4.3	0.3	5.95	3.8	4.8
2022Q2	398,713	26,801	6.72	346,075	451,351	4.6	0.3	6.48	4.1	5.2

## Alternative estimates

### Alternative Estimates of Employment, Unemployment and Labour Force Characteristics

Official employment, unemployment and labour force characteristics are estimated at the Sri Lanka Labour Force Survey, based on the internationally comparable concepts and definitions recommended by the ILO. However the validity of the concepts and definitions used at the survey is questioned very often in some forums, for the appropriateness of these concepts and definitions in the Sri Lankan context.

The concepts and definitions, which were found to be controversial, are as below.

- (1) **Number of Hours of Work** : A person who work **at least one hour** during the reference week, is considered **employed**, under these definitions.
- (2) **Working Age Population** : All persons of **age 10 years and over** are considered to be in the working age, before 2013. However, this was changed as **age 15 and over** from 2013 onward.
- (3) **Employment Status** : All,
  - a) Paid employees, (those who work for wages/salaries).
  - b) Employers (who have at least one paid employee under them).
  - c) Own account workers (who carry out the economic activity without having anypaid employees).
  - d) Contributing family workers (who make their contribution to the economic activities carried out bytheir own household, without wages/salaries).

The validity of the above concepts and definitions is raised due to the following reasons.

- (1) **Number of Hours of Work** : Some pointed out that one hour per week is too low, to consider a person to be employed.
- (2) **Working Age Population** : Some pointed out those persons in the age group 10-14 yrs. are too young to be considered in the working age. (From 2013 onward the working age population is considered as age 15 and over).
- (3) **Employment Status** : Some pointed out that 'contributing family workers' may work in the family enterprise without payment because they have no other work, and so it is not appropriate to consider them as employed.

An attempt has been made to produce '**Alternative estimates of Employment, Unemployment and Labour Force Characteristics,**' by revising the original concepts and definitions so that the above issues are addressed as explained below.

The revisions made are,

- (1) **Number of Hours of Work** : Persons who work **20 hours or more per week only** are considered to be employed.
- (2) **Contributing Family Worker** : Contributing family workers are **not** considered as employed. They are considered as **economically inactive** (not in the labour force) so only, **a) paid employees b) employers and c) own account workers are considered to be employed.**

Following tables are based on the above alternative concepts and definitions.

## Alternative estimates of employment, unemployment and labour force characteristics

Table 1 - Labour force status of household population 15 years &amp; over (Alternative estimates)

Year	Household population (15 years & over)	Total labour force	Labour force partici: rate (%)	Labour Force				Not In labour Force Number
				Employed		Unemployed		
				Number	Rate (% to total labour force)	Number	Rate (% to total labour force)	
2013	14,958,239	6,966,035	46.6	6,600,172	94.7	365,863	5.3	8,007,536
2014	15,134,484	7,017,985	46.4	6,669,590	95.0	348,395	5.0	8,116,499
2015	15,281,945	7,156,393	46.8	6,772,896	94.6	383,496	5.4	8,125,553
2016	15,448,679	7,325,972	47.4	6,962,973	95.0	362,999	5.0	8,122,707
2017	15,843,735	7,474,883	47.2	7,116,376	95.2	358,507	4.8	8,368,851
2018	16,196,232	7,428,999	45.9	7,056,406	95.0	372,593	5.0	8,767,233
2019	16,424,016	7,609,700	46.3	7,198,383	94.6	411,318	5.4	8,814,316
2020	16,739,396	7,438,037	44.4	6,970,524	93.7	467,513	6.3	9,301,359
2021	17,133,659	7,471,067	43.6	7,031,284	94.1	439,783	5.9	9,662,592
2020Q2	16,793,046	7,300,540	43.5	6,842,181	93.7	458,359	6.3	9,492,506
2021Q2	17,092,123	7,219,755	42.2	6,787,292	94.0	432,463	6.0	9,872,368
2022Q1	17,105,140	7,787,449	45.5	7,414,177	95.2	373,272	4.8	9,317,691
2022Q2	17,125,995	7,393,481	43.2	6,994,768	94.6	398,713	5.4	9,732,513

Table 2- Historical table of number and rate of unemployment by age (Alternative estimates)

Year	Total		Age group									
			15 - 19		20 - 24		25 - 29		30 - 39		40 & above	
	No.	Rate	No.	Rate	No.	Rate	No.	Rate	No.	Rate	No.	Rate
2013	365,863	5.3	50,436	23.8	149,243	22.4	64,566	8.6	55,398	3.2	46,221	1.3
2014	348,395	5.0	49,540	25.7	138,565	22.2	67,235	9.3	53,648	3.0	39,407	1.1
2015	383,496	5.4	55,557	28.6	143,351	22.0	78,592	10.4	60,768	3.4	45,229	1.2
2016	362,999	5.0	58,622	32.8	144,156	22.2	76,624	10.0	47,956	2.7	35,640	0.9
2017	358,507	4.8	46,016	25.1	135,121	19.7	79,727	10.4	53,053	3.0	44,590	1.1
2018	372,593	5.0	52,624	30.4	144,824	22.1	84,000	11.3	55,853	3.3	35,291	0.8
2019	411,318	5.4	53,652	29.3	148,046	22.4	93,793	11.8	59,009	3.4	56,818	1.3
2020	467,513	6.3	62,910	38.0	183,722	27.5	100,359	13.0	64,493	3.9	56,029	1.3
2021	439,783	5.9	39,102	30.8	187,104	29.7	97,631	12.5	66,973	4.2	48,972	1.1
2020Q2	458,359	6.3	68,256	40.3	186,900	29.0	89,292	12.2	59,636	3.7	54,275	1.3
2021Q2	432,463	6.0	42,284	36.6	200,484	34.1	80,678	10.3	63,867	4.2	45,150	1.1
2022Q1	373,272	4.8	33,142	23.7	138,744	20.3	89,994	10.9	57,269	3.4	54,122	1.2
2022Q2	398,713	5.4	32,860	27.5	171,881	26.6	90,599	12.1	46,076	2.8	57,297	1.3



Table 3 - Currently Employed persons by Industry group (No. and percentage) (Based on ISIC Fourth Revision) - (Alternative estimates)

Year	Total	Industry group																	
		1	2	3	6	7	8	9	10	11	13	14	15	16	17	19	20	Other	
2017	No.	7,116,376	1,555,527	57,397	1,397,453	650,665	1,007,347	497,936	180,162	66,999	158,429	66,035	145,217	519,684	352,121	145,028	105,521	149,109	61,746
	%	100.0	21.9	0.8	19.6	9.1	14.2	7.0	2.5	0.9	2.2	0.9	2.0	7.3	4.9	2.0	1.5	2.1	0.9
2018	No.	7,056,406	1,513,837	58,743	1,336,902	676,629	1,010,560	487,204	205,377	54,000	171,779	81,274	158,089	431,126	398,079	140,278	101,641	178,313	52,575
	%	100.0	21.5	0.8	18.9	9.6	14.3	6.9	2.9	0.8	2.4	1.2	2.2	6.1	5.6	2.0	1.4	2.5	0.7
2019	No.	7,198,383	1,538,804	58,117	1,365,637	659,891	992,825	500,547	204,840	62,552	184,666	87,913	193,082	430,760	401,519	164,487	119,721	172,494	60,528
	%	100.0	21.4	0.8	19.0	9.2	13.8	7.0	2.8	0.9	2.6	1.2	2.7	6.0	5.6	2.3	1.7	2.4	0.8
2020	No.	6,970,524	1,592,043	51,906	1,276,171	660,251	970,228	494,638	186,117	55,187	174,496	82,307	157,459	433,734	370,960	152,648	114,254	153,050	45,075
	%	100.0	22.8	0.7	18.3	9.5	13.9	7.1	2.7	0.8	2.5	1.2	2.3	6.2	5.3	2.2	1.6	2.2	0.6
2021	No.	7,031,284	1,645,518	47,771	1,236,731	643,441	1,015,162	452,687	183,091	71,279	177,033	76,063	129,244	476,399	373,300	168,807	109,266	181,500	43,994
	%	100.0	23.4	0.7	17.6	9.2	14.4	6.4	2.6	1.0	2.5	1.1	1.8	6.8	5.3	2.4	1.6	2.6	0.6
2020Q2	No.	6,842,181	1,545,311	41,261	1,293,477	621,688	946,070	487,781	181,658	46,921	162,820	86,609	153,463	399,221	384,858	176,092	109,113	164,716	41,122
	%	100.0	22.6	0.6	18.9	9.1	13.8	7.1	2.7	0.7	2.4	1.3	2.2	5.8	5.6	2.6	1.6	2.4	0.6
2021Q2	No.	6,787,292	1,590,524	42,038	1,161,475	602,815	943,740	464,258	181,757	68,491	211,074	84,941	118,790	473,037	331,556	193,035	124,206	153,547	42,008
	%	100.0	23.4	0.6	17.1	8.9	13.9	6.8	2.7	1.0	3.1	1.3	1.8	7.0	4.9	2.8	1.8	2.3	0.6
2022Q1	No.	7,414,177	1,563,785	67,554	1,376,477	708,945	1,068,678	525,527	224,336	59,423	171,701	83,122	146,346	464,833	451,491	165,310	163,540	111,591	61,518
	%	100.0	21.1	0.9	18.6	9.6	14.4	7.1	3.0	0.8	2.3	1.1	2.0	6.3	6.1	2.2	2.2	1.5	0.8
2022Q2	No.	6,994,768	1,570,545	55,650	1,334,556	640,541	1,022,902	414,020	158,043	60,657	169,067	78,010	121,940	430,022	406,530	186,647	133,661	148,727	63,250
	%	100.0	22.5	0.8	19.1	9.2	14.6	5.9	2.3	0.9	2.4	1.1	1.7	6.1	5.8	2.7	1.9	2.1	0.9

Note: The tabulation groups based on ISIC (Rev.4) are indicated as A,B,C.....U. Due to the limitations on reliability ( based on CV),some of these groups have been combined.

#### Industry Group

1 Agriculture, forestry and fishing (A)

2 Mining & quarrying (B)

3 Manufacturing (C)

6 Construction, Electricity, gas, steam and air conditioning supply, Water supply, sewerage, waste management and remediation activities (D, E,F)

7 Wholesale and retail trade, repair of motor vehicles and motor cycles(G)

8 Transportation and storage (H)

9 Accommodation and food services activities (I)

10 Information and communication (J)

11 Financial and insurance activities (K)

13 Professional, scientific and technical activities (M)

14 Administrative and support service activities (N)

15 Public administration and defence compulsory social security (O)

16 Education (P)

17 Human health and social work activities (Q)

19 Other service activities (S)

20 Activities of households as employers; undifferentiated goods and services - producing activities of households for own use (T)

Other

Other

12 Real estate activities (L)

18 Arts, entertainment and recreation (R)

21 Activities of extra territorial organizations & bodies (U)

# 2022


## Sri Lanka Labour Force Survey Quarterly Report 2<sup>nd</sup> Quarter

### The Vision of DCS

"To be the leader in the region in producing timely statistical information to achieve the country's development goals."




### The Mission of DCS

"Making contribution in the socioeconomic development of the country by providing accurate timely statistics, more Effectively by means of new technology, and utilising the services of dedicated staff under a strategic leadership to become a prosperous nation in the globalised environment."

 Department of Census & Statistics  
Sankyana Mandiraya  
No. 306/71, Polduwa Road  
Battaramulla

 [info@statistics.gov.lk](mailto:info@statistics.gov.lk)  
 +94 11-2147000  
 +94 11-2147011  
 [statistics.gov.lk](http://statistics.gov.lk)

This publication is produced by the  
Sample Surveys Division

 7<sup>th</sup> floor, Department of Census and Statistics  
 [sample.survey@statistics.gov.lk](mailto:sample.survey@statistics.gov.lk)  
 +94 11-2147446  +94 11-2147447