



**QUARTERLY REPORT OF THE
SRI LANKA LABOUR FORCE
SURVEY**

Quarterly Report – 2017

First Quarter

**DEPARTMENT OF CENSUS & STATISTICS
MINISTRY OF NATIONAL POLICIES AND ECONOMIC
AFFAIRS**

ISBN 978 – 955 – 702 – 047 – 1

Preface

In the past, information on labour force characteristics, employment and unemployment etc. were collected through labour force and socio - economic surveys conducted at five yearly time intervals. However, the employment and unemployment data are required at very short intervals to monitor the programs made in the employment generating policies of the government. Therefore, to satisfy this need, the Department of Census and Statistics (DCS) designed a labour force survey on a quarterly basis, to measure the levels and trends of employment, unemployment and labour force in Sri Lanka on a continuous basis. This survey was commenced from the first quarter of 1990 and this report is the hundred and two in the series of quarterly reports published so far.

Current survey concepts and methods are very similar to those introduced at the beginning of the survey in 1990. However, some changes were made over the years to improve the accuracy and usefulness of the data. The significant revisions were made on the labour force survey questionnaire in 1996, 2006, 2013 and some small improvement were made in 2016. A reweighting is applied to labour force survey data series from 2011 onward, in order to adjust the population estimates with the calculated population at the 2012 Census of Population and Housing.

For the 2017 survey Computer-assisted personal interviewing (CAPI) method is introduced to collect survey data however in the 1st quarter 2017 paper questionnaire was also used until the CAPI is established fully for the data collection.

The field work of the survey for the first quarter 2017 was done in January, February and March in year 2017. This survey covered the whole country. A nationally representative annual sample of about 25,750 housing units have been selected for the survey in 2017. This report is based on a quarterly sample of 6,430 housing units.

*Dr. A.J. Satharasinghe
Director General of Census & Statistics*

*Department of Census & Statistics,
"Sankhyana Mandiraya",
306/71,
Polduwa Road,
Baththaramulla*

09.08.2017.

Acknowledgements

This report is hundred and two in the series of the Quarterly Labour Force Survey which was commenced from the first quarter of 1990 and is being continued by the Department of Census and Statistics.

Planning and execution of the survey was done by the staff of the Sample Surveys Division under the guidance of Mr. D.G.S.G. Munasinghe, Additional Director General (Statistics) and Mrs. K.M.D.S.D. Karunaratne, Director (Statistics) and under the direction of Mr. M.D. Sunil Senanayake, Deputy Director, Sample Surveys Division.

The survey activities were organized and supervised by Mrs. W.A.C.Wijebandara, Mr. K.S.R.L.Senadeera, Mrs. M.D.D.D.Deepawansa, Mrs. C.Jayawickrama, Mr. A.K.D.C.N.S.Karunarithna, Mr. K.Weerasiri, Mrs. U.S.Dilrukshi, Mr. M.L.K.P.Kumara, Mrs. M.W.L.C.M. Chandrarathne, Mrs. P.D.Nanayakkara, Ms.R.P.M.Subhashini, Statisticians & Senior Statistician, of the Sample Surveys Division.

The computer data processing and final tabulations were done by Mr. A.M.A.E.Atapattu, Statistical Officer and Mrs. A.N. Ekanayake, Statistical Assistant of the Sample Surveys Division, under the supervision of Mrs. W.A.C.Wijebandara, Statistician. The Statistical Officers, Statistical Assistants, Information and Communication Technology Assistants, Data Entry Officers/Coding Clerks and Development Officers (iii) of the Sample Survey Division are acknowledged for their valuable contribution during the whole survey process.

The Information & Communication Technology Division, under the direction of Ms. I.A.M. Fernando, Additional Director General (ICT) and under the supervision of Mr. P.M.R.Fernando, Director (ICT) and Mr. W.H.P.N. Weerasiri Director (ICT), were responsible for the survey data entry and preparation of data entry and computer edits programmes. Data entry was decentralized and manual editing, coding & data entry were done by responsible officers at district secretariats in all the districts. Developing of sample selection programme and its related computer software was done by Mr. K.M.R. Wickramasinghe, Deputy Director (ICT).

This publication was organized and prepared by Mrs. W.A.C.Wijebandara and A.K.D.C.N.S.Karunarithna, Statisticians, Sample Surveys Division, assisted by Mr. A.M.A.E.Atapattu, Statistical Officer and Mrs. Asanthi Ekanayaka, Statistical Assistant of Sample Surveys Division.

District staff of the Department who worked on the survey deserves a special word of thanks. The Deputy Directors/ Senior Statisticians/ Statisticians supervised the survey and field Statistical Officers, worked hard at the data collection stage, to make this survey a success. Printing of the report was done by the staff of Printing Division, under the supervision of Mr. M.J.M. Fernando, Statistician.

Finally, I wish to express my appreciation to all the respondents of the survey for their valuable cooperation.

Sri Lanka Labour Force Survey
Summary Statistics on Labour Force Characteristics
2017, 1st Quarter
(All Island)

15 years & over population

	Total	Male	Female	Urban	Rural
Population (15 years & over)	15,684,110	7,166,309	8,517,801	2,751,180	12,932,930
Labour force in this age group	8,583,082	5,381,244	3,201,838	1,417,031	7,166,050
Labour force participation rate	54.7	75.1	37.6	51.5	55.4
Employed population	8,230,207	5,235,046	2,995,161	1,357,230	6,872,978
Employment rate	95.9	97.3	93.5	95.8	95.9
Unemployed population	352,875	146,198	206,677	59,802	293,073
Unemployment rate	4.1	2.7	6.5	4.2	4.1
Not in labour force	7,101,029	1,785,065	5,315,964	1,334,149	5,766,880

20 years & over population

	Total	Male	Female	Urban	Rural
Population (20 years & over)	14,032,224	6,374,457	7,657,767	2,464,799	11,567,425
Labour force in this age group	8,345,946	5,226,446	3,119,500	1,381,276	6,964,670
Labour force participation rate	59.5	82.0	40.7	56.0	60.2
Employed population	8,045,486	5,108,931	2,936,555	1,330,608	6,714,879
Employment rate	96.4	97.8	94.1	96.3	96.4
Unemployed population	300,460	117,515	182,945	50,669	249,791
Unemployment rate	3.6	2.2	5.9	3.7	3.6
Not in labour force	5,686,278	1,148,012	4,538,267	1,083,523	4,602,755

Selected Labour Force Indicators ...

Indicator	Year							
	2012	2013	2014	2015	2016	2015Q1	2016Q1	2017Q1
Labour force participation rate								
By Gender								
Total	52.5	53.7	53.2	53.8	53.8	53.5	54.1	54.7
Male	74.9	74.9	74.6	74.7	75.1	73.8	75.5	75.1
Female	32.9	35.4	34.6	35.9	35.9	36.3	36.3	37.6
By residential sector								
Total	52.5	53.7	53.2	53.8	53.8	53.5	54.1	54.7
Urban	48.3	47.7	48.7	48.6	49.8	46.3	48.5	51.5
Rural	53.4	54.9	54.1	54.8	54.6	54.9	55.2	55.4
Unemployment Rate								
By Gender								
Total	4.0	4.4	4.3	4.7	4.4	4.7	4.2	4.1
Male	2.8	3.2	3.1	3.0	2.9	2.8	3.1	2.7
Female	6.3	6.6	6.5	7.6	7.0	7.9	6.1	6.5
By selected age Group (Year)								
20 – 29	11.3	13.1	13.6	14.2	14.2	14.0	14.2	12.5
20 – 24	16.7	19.3	19.9	19.7	19.9	20.4	19.7	17.4
25 – 29	6.6	7.6	8.2	9.4	9.2	8.6	9.4	8.0
By selected educational level								
GCE A/L and above								
Total	7.6	8.7	8.2	9.2	8.3	10.1	7.7	7.8
Male	4.6	5.7	5.4	4.7	4.7	5.3	5.9	4.9
Female	10.8	11.8	11.1	13.5	11.9	14.3	9.5	10.8
Employed population								
By Gender								
Total	7,488,704	7,681,279	7,700,489	7,830,976	7,947,683	7,800,070	7,968,931	8,230,207
Male	5,046,057	5,024,340	5,075,426	5,097,798	5,149,948	5,035,185	5,102,435	5,235,046
Female	2,442,647	2,656,938	2,625,064	2,733,178	2,797,735	2,764,885	2,866,496	2,995,161
By industry (Percentage)								
Total	7,488,704	7,681,279	7,700,489	7,830,976	7,947,683	7,800,070	7,968,931	8,230,207
%	100.0	100.0	100.0	100.0	100.0	100.0	100.0	100.0
Agriculture	2,333,342	2,321,215	2,222,859	2,244,547	2,153,874	2,333,773	2,274,722	2,221,761
%	31.2	30.2	28.9	28.7	27.1	29.9	28.5	27.0
Industry	1,940,615	1,996,730	2,027,426	2,018,171	2,097,503	1,996,180	2,068,453	2,306,398
%	25.9	26.0	26.3	25.8	26.4	25.6	26.0	28.0
Services	3,214,746	3,363,334	3,450,205	3,568,259	3,696,306	3,470,118	3,625,756	3,702,049
%	42.9	43.8	44.8	45.6	46.5	44.5	45.5	45
By no. of hours worked per week (percentage)								
Total	100.0	100.0	100.0	100.0	100.0	100.0	100.0	100.0
0#	4.5	5.2	5.2	5.5	4.4	2.0	3.4	3.5
1 – 9	1.1	1.8	1.3	1.7	1.5	1.1	1.5	1.6
10 – 39	26.1	27.5	27.6	27.2	26.2	25.5	27.3	26.7
40 & above	68.3	65.5	65.9	65.7	67.9	71.5	67.7	68.1

has a job but not at work during the reference week

Note : Working age population considered as (age 15 & over population)

CONTENTS

	Page No.
Preface	iii
Acknowledgements	v
Highlights	vii
Summary Statistics	viii
Contents	ix
Labour Force	1
Employment	2
Unemployment	3
Tables	
Table No.	
1. Historical table of Labour Force Status (current) of the Household Population, 15 years of Age and over - Both Sexes	4
1A. Historical table of Labour Force Status (current) of the Household Population, 15 years of Age and over – Male	5
1B. Historical table of Labour Force Status (current) of the Household Population, 15 years of Age and over – Female	5
2. Labour Force Status (current) of the Household Population 15 years of Age and over, by Age - Both Sexes	6
2A. Labour Force Status (current) of the Household Population 15 years of Age and over, by Age – Male	7
2B. Labour Force Status (current) of the Household Population 15 years of Age and over, by Age – Female	7
3. Historical table of Currently Employed persons by Age Groups (percentage) - Both Sexes	8
3A. Historical table of Currently Employed persons by Age Groups (percentage) – Male	8
3B. Historical table of Currently Employed persons by Age Groups (percentage) – Female	8
4. Historical table of Currently Employed persons by Level of Education (percentage) - Both Sexes	9
4A. Historical table of Currently Employed persons by Level of Education (percentage) – Male	9
4B. Historical table of Currently Employed persons by Level of Education (percentage) – Female	9
5. Historical table of Currently Employed persons by Employment Status (percentage) - Both Sexes	10
5A. Historical table of Currently Employed persons by Employment Status (percentage) – Male	10
5B. Historical table of Currently Employed persons by Employment Status (percentage) – Female	10
6. Currently employed persons by Industry group (Based on ISIC Rev.4) – Both sexes	11
6A. Currently employed persons by Industry group (Based on ISIC Rev.4) – Male	12
6B. Currently employed persons by Industry group (Based on ISIC Rev.4) – Female	13
6C. Historical table of currently employed population by major industry group - Both sexes	14
6D. Historical table of currently employed population by major industry group (percentage) - Both sexes	14
7. Currently employed persons by Occupation group (Based on ISCO 08) - Both sexes	15
7A. Currently employed persons by Occupation group (Based on ISCO 08) – Male	16
7B. Currently employed persons by Occupation group (Based on ISCO 08) – Female	16
8. Currently Employed persons by hours per week actually worked at the main job and Major Industrial group (percentage) - Both Sexes	17
9. Historical table of Currently Unemployed persons by Age Groups (percentage) - Both Sexes	18
9A. Historical table of Currently Unemployed persons by Age Groups (percentage) – Male	18
9B. Historical table of Currently Unemployed persons by Age Groups (percentage) – Female	18
10. Historical table of Currently Unemployed persons by Level of Education (percentage) - Both Sexes	19
10A. Historical table of Currently Unemployed persons by Level of Education (percentage) – Male	19
10B. Historical table of Currently Unemployed persons by Level of Education (percentage) – Female	19
11. Currently Unemployed Persons by Sex and Duration of Unemployment	20
12. Standard error and coefficient of variation of selected variables	21

Appendix 1: Explanatory Notes

Appendix 2: Alternative estimates of employment, unemployment and labour force characteristics

Introduction

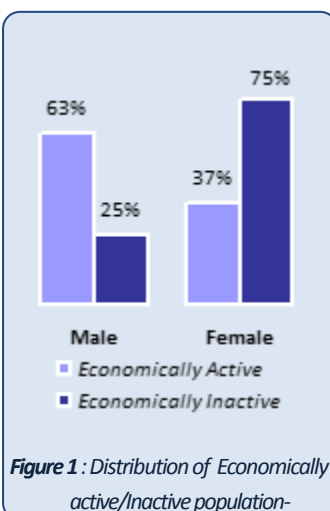
Highlights

- Labour force participation rate is 54.7% for the First Quarter of 2017.
- Unemployment rate for the survey period is 4.1%.

The Estimated working age household population (age 15 years and above) for the 1st quarter 2017 is about 15.7 million. This shows an increase of 0.3 million compared to 1st quarter 2016. This may be due to the increase in net migration (the highest over the past 10 years) and internal movements such as resettlement of population from institutions to households. As a result of increase in household population labour force too has increased by about 260,000 during this period.

Inside

Labour Force	1
Employment	2
Unemployment	3
Selected Labour Force Indicators	4



Sri Lanka Labour Force Survey (LFS) is designed to measure the levels and trends of employment, unemployment and labour force in Sri Lanka. LFS has been conducted quarterly, since the first quarter of 1990.

This bulletin contains labour force, employment and unemployment statistics for the first quarter 2017 based on the data collected in January, February and March covering the whole country.

Labour Force (Economically Active Population)

Table 1: Economically active population by gender and sector – First Quarter 2017

Sector	Economically active population					
	Total	%	Male	%	Female	%
Sri Lanka	8,583,082	100.0	5,381,244	62.7	3,201,838	37.3
Urban	1,417,031	100.0	914,609	64.5	502,423	35.5
Rural	6,732,711	100.0	4,241,120	63.0	2,491,591	37.0
Estate	433,340	100.0	225,516	52.0	207,824	48.0

Table 2: Economically inactive population by gender and sector – First Quarter 2017

Sector	Economically inactive population					
	Total	%	Male	%	Female	%
Sri Lanka	7,101,029	100.0	1,785,065	25.1	5,315,964	74.9
Urban	1,334,149	100.0	350,758	26.3	983,391	73.7
Rural	5,532,069	100.0	1,359,572	24.6	4,172,497	75.4
Estate	234,810	100.0	74,736	31.8	160,075	68.2

Table 3: LFPR by gender and year

Year	Total	Male	Female
2011	52.9	74.0	34.3
2012	52.5	74.9	32.9
2013	53.7	74.9	35.4
2014	53.2	74.6	34.6
2015	53.8	74.7	35.9
2016	54.1	75.1	36.0
2014 Q1	53.4	74.4	35.3
2015 Q1	53.5	73.8	36.3
2016 Q1	54.1	75.5	36.3
2017 Q1	54.7	75.1	37.6

Table 3 provides the information on LFPRs since year 2011. Referring the Table 3, It is important to note that, male participation to the labour force is always higher than that of females.

Considering the Table 4, the distribution of LFPR by age group and by gender depicts high male participation compared to female in all age groups. The highest participation rate for male is reported from age group 35–39 years (96.0%), while that for female is reported from 45–49 age group (54.5%).

Labour Force

This is the currently economically active population. Which is the number of persons (age 15 years & above) who are employed or unemployed during the reference week.

Labour force participation rate (LFPR)

Labour force population expressed as a percentage of the population, age 15 years and over.

According to the Table 1, the estimated economically active population is about 8.6 million in the first quarter 2017. Of which 62.7 percent are males and 37.3 percent are females. Out of the economically inactive population 25.1 percent are males and 74.9 percent are females (Table 2).

Table 4: LFPR by age group and gender - First Quarter 2017

Age group (Years)	Total	Male	Female
Sri Lanka	54.7	75.1	37.6
15 - 19	14.4	19.5	9.6
20 - 24	57.9	74.3	43.6
25 - 29	65.7	94.4	42.3
30 - 34	69.6	95.7	48.6
35 - 39	69.2	96.0	48.2
40 - 44	72.1	95.7	52.0
45 - 49	72.1	93.3	54.5
50 - 54	70.0	92.5	48.8
55 - 59	62.2	82.7	44.0
60+	32.9	52.1	17.7

Definition of 'Employed'

Persons, who worked at least one hour during the reference period, as paid employees, employers, own account workers or contributing family workers are said to be employed. This also includes persons with a job but not at work during the reference period.

Reference Period :

Previous week of the survey week

The Employment Rate

The proportion of employed population to the total labour force.

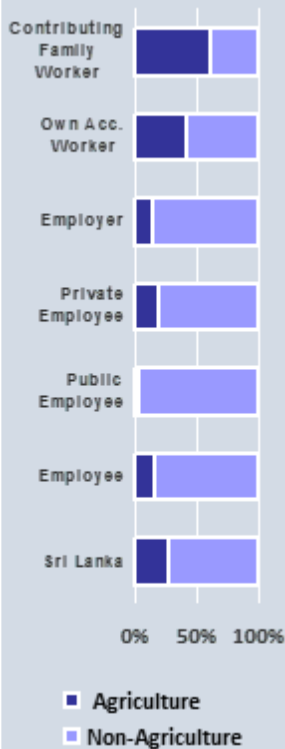


Figure 2: Distribution of employed population by employment status and Agriculture/Non-Agriculture sector - First quarter 2017

Employment ...

Table 5: Distribution of Employed population by main industry
(First Quarter 2016 – First quarter 2017)

Quarter	Sri Lanka	Major Industry Group		
		Agriculture	Industries	Services
2016 Q1 (No.)	7,968,931	2,274,722	2,068,453	3,625,756
(%)	100.0	28.5	26.0	45.5
2016 Q2 (No.)	7,815,280	1,961,818	2,121,365	3,732,097
(%)	100.0	25.1	27.1	47.8
2016 Q3 (No.)	7,999,821	2,168,982	2,144,808	3,686,032
(%)	100.0	27.1	26.8	46.1
2016 Q4 (No.)	8,006,700	2,209,976	2,055,386	3,741,339
(%)	100.0	27.6	25.7	46.7
2017 Q1 (No.)	8,230,207	2,221,761	2,306,398	3,702,049
(%)	100.0	27.0	28.0	45.0

Table 5 shows the percentage distribution of employed population by main industry from first quarter 2016 to first quarter 2017. During first quarter of 2017, the total number of employed persons in Sri Lanka is estimated as about 8.2 million. Of which, about 45.0 percent engaged in Service sector, 28.0 percent in Industries sector and 27.0 percent in Agriculture sector.

Table 6: Distribution of employed population by employment status in Agriculture and Non-Agriculture sectors – First quarter 2017

Employment Status	Sri Lanka		Sector			
			Agriculture		Non-Agriculture	
	No.	%	No.	%	No.	%
Sri Lanka	8,230,207	100.0	2,221,761	27.0	6,008,446	73.0
Employee	4,787,548	100.0	741,325	15.5	4,046,224	84.5
Public	1,215,187	100.0	30,106	2.5	1,185,081	97.5
Private	3,572,361	100.0	711,219	19.9	2,861,143	80.1
Employer	258,117	100.0	36,785	14.3	221,332	85.7
Own Account Worker	2,504,860	100.0	1,031,249	41.2	1,473,611	58.8
Contributing Family Worker	679,682	100.0	412,403	60.7	267,279	39.3

Table 7: Percentage distribution of Employed population by main industry & gender – First quarter 2017

Major Industry Group	Sri Lanka	Gender	
		Male	Female
Sri Lanka	100.0	100.0	100.0
Agriculture	27.0	25.1	30.4
Industry	28.0	28.5	27.2
Services	45.0	46.4	42.5

Main industry categories and sub sectors

Agriculture

1. Agriculture Forestry and Fishery (A)

Industries

1. Mining & Quarrying (B)
2. Manufacturing (C)
3. Construction, Electricity, gas, steam and air conditioning supply, Water supply, sewerage, waste management and remediation activities (D, E, F)

Services

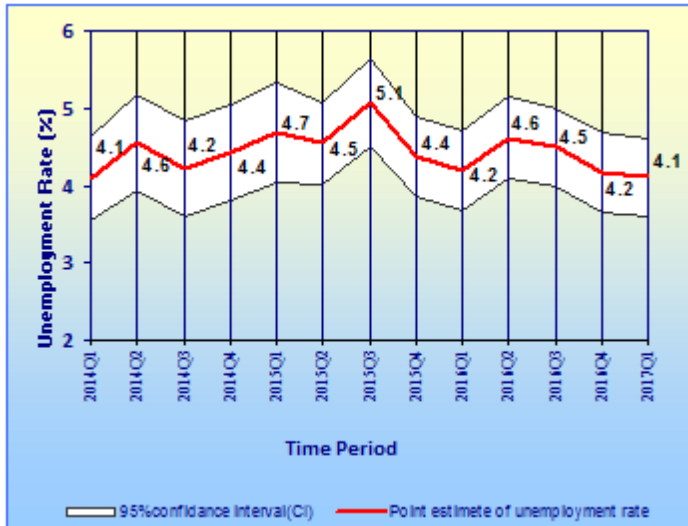
1. Wholesale and retail trade, repair of motor vehicles and motor cycles (G)
2. Transportation and storage (H)
3. Accommodation and food services activities (I)
4. Information and communication (J)
5. Financial and insurance activities (K)
6. Professional, scientific and technical activities (M)
7. Administrative and support service activities (N)
8. Public administration and defense compulsory social security (O)
9. Education (P)
10. Human health and social work activities (Q)
11. Other service activities (S)
12. Activities of households as employers; undifferentiated goods and services - producing activities of households for own use (T)
13. Real estate activities (L) Arts, entertainment and recreation (R) Activities of extra territorial organizations & bodies (U)

As could be seen from the Figure 2 & Table 6 contributing family workers are highly concentrated in Agriculture sector.

Table 7 depicts the percentage distribution of male and female employed population by main industries. Highest employment share is in service sector and this is true for both male & female, while the lowest shares are for agriculture sector. Among employed females 30.4 percent is in agriculture sector while this share is 25.1 percent for males.

Unemployment ...

Figure 3: Unemployment rates and its 95% confidence intervals (2014Q1 - 2017Q1)



¹Sampling error : When a sample, rather than the entire population, is surveyed, estimates differ from the true values of population they represent. This difference, or sampling error, occurs by chance, and its variability is measured by the sampling error of the estimate.

For more details, please refer the explanatory note given under the labour force link in the DCS website; www.statistics.gov.lk

Table 8: Unemployment rate by age group and gender – First quarter 2017

Age group (Years)	Sri Lanka	Gender	
		Male	Female
Sri Lanka	4.1	2.7	6.5
15–24	18.5	15.6	23.1
25–29	8.0	3.9	15.5
Over 30	1.6	0.8	2.9

These figures are to be treated with caution as the corresponding CV

As can be seen from Table 8, overall unemployment rate reported for female is 6.5 percent and it is 2.7 percent for male. Youth unemployment rate (age 15 – 24 years) corresponding to the first quarter 2017 is 18.5 percent and that reports the highest unemployment rate among all other age groups. Further rates for both males and females are 15.6 and 23.1 percent respectively for age group 15–24.

The survey results further revealed that the unemployment among females is higher than that of males, in all age groups. Youth and female unemployment contribute more to the overall unemployment of the country.

The highest unemployment rate is reported from the G.C.E (A/L) and above group which is about 7.8 percent. Corresponding percentages are 4.9 percent and 10.8 percent for males and females respectively. Female unemployment rates are higher than those of males in all levels of education.

This further shows that the problem of unemployment is more acute in the case of educated females than educated males, which was observed consistently over the results of previous survey rounds as well.

Table 9: Unemployment rate by level of education – First quarter 2017

Level of Education	Unemployment Rate (%)		
	Sri Lanka	Male	Female
Sri Lanka	4.1	2.7	6.5
Below GCE O/L	2.4	1.7	3.9
GCE O/L	5.7	4.7	7.5
GCE A/L & above	7.8	4.9	10.8

Definition of 'Unemployed'

Persons available and/or looking for work, and who did not work and taken steps to find a job during last four weeks and ready to accept a job given a work opportunity within next two weeks are said to be unemployed.

The Unemployment Rate

The proportion of unemployed population to the total labour force.

The number of unemployed persons is estimated as 352,875 during the first quarter 2017. The unemployment rate for the first quarter 2017 is 4.1 percent.

As shown in Figure 3, it is very important to note that, when sampling error¹ is considered there are no statistically significant drops/increases of unemployment rates reported in different time periods starting from First quarter 2014 to First quarter 2017.

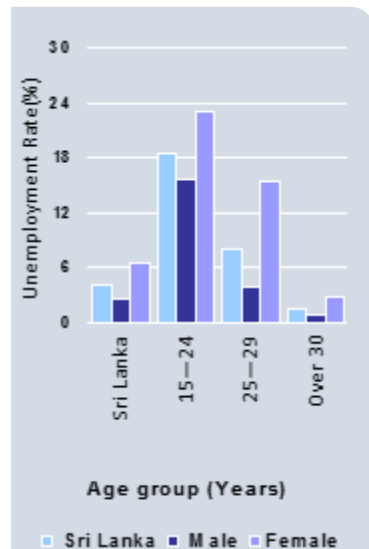


Figure 3: Unemployment rate by age group and gender – First quarter 2017

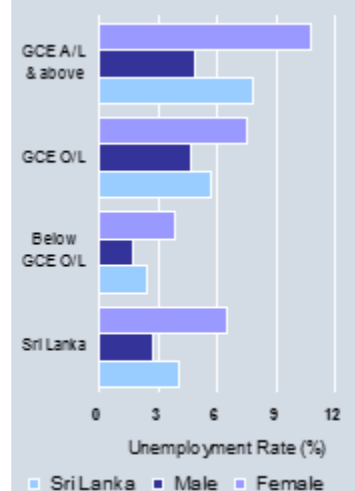


Figure 4: Unemployment rate by level of education and gender – First quarter 2017

**TABLE 1 - HISTORICAL TABLE OF LABOUR FORCE STATUS (CURRENT) OF THE HOUSEHOLD
POPULATION, 15 YEARS OF AGE AND OVER - BOTH SEXES**

YEAR	NATIONAL LEVEL DATA							
	HOUSEHOLD POPULATION (15 YEARS & OVER)	LABOUR FORCE						NOT IN LABOUR FORCE NUMBER
		TOTAL LABOUR FORCE	LABOUR FORCE PARTICI: RATE(%)	EMPLOYED		UNEMPLOYED		
				NUMBER	RATE (% TO TOTAL LABOUR FORCE)	NUMBER	RATE (% TO TOTAL LABOUR FORCE)	
2009 ¹	14,876,264	8,051,089	54.1	7,579,835	94.1	471,254	5.9	6,825,175
2010 ¹	15,166,285	8,096,477	53.4	7,696,142	95.1	400,335	4.9	7,069,808
2011 ²	14,975,989	7,926,445	52.9	7,591,591	95.8	334,854	4.2	7,049,544
2012 ²	14,857,578	7,798,407	52.5	7,488,704	96.0	309,703	4.0	7,059,171
2013 ²	14,959,065	8,033,804	53.7	7,681,279	95.6	352,526	4.4	6,925,260
2014 ²	15,134,484	8,048,884	53.2	7,700,489	95.7	348,395	4.3	7,085,600
2015 ²	15,281,945	8,214,473	53.8	7,830,976	95.3	383,496	4.7	7,067,473
2016 ²	15,448,679	8,310,682	53.8	7,947,683	95.6	362,999	4.4	7,137,997
2016Q1 ²	15,382,201	8,318,617	54.1	7,968,931	95.8	349,686	4.2	7,063,584
2017Q1 ²	15,684,110	8,583,082	54.7	8,230,207	95.9	352,875	4.1	7,101,029

¹ - Excluding Northern province

² - All the districts are included and the tables consist with reweighted estimates.

**TABLE 1A - HISTORICAL TABLE OF LABOUR FORCE STATUS (CURRENT) OF THE HOUSEHOLD
POPULATION, 15 YEARS OF AGE AND OVER - MALE**

YEAR	HOUSEHOLD	LABOUR FORCE						NOT IN
	POPULATION	TOTAL	LABOUR	EMPLOYED		UNEMPLOYED		LABOUR
	(15 YEARS	LABOUR	FORCE	NUMBER	RATE	NUMBER	RATE	FORCE
	& OVER)	FORCE	PARTICI:	(% TO TOTAL		(% TO TOTAL		NUMBER
			RATE(%)	LABOUR FORCE)		LABOUR FORCE)		
2009 ¹	6,925,821	5,173,106	74.7	4,949,825	95.7	223,281	4.3	1,752,715
2010 ¹	7,078,246	5,310,872	75.0	5,125,763	96.5	185,108	3.5	1,767,374
2011 ²	7,027,780	5,203,267	74.0	5,061,214	97.3	142,053	2.7	1,824,513
2012 ²	6,932,520	5,192,686	74.9	5,046,057	97.2	146,629	2.8	1,739,835
2013 ²	6,926,750	5,187,873	74.9	5,024,341	96.8	163,533	3.2	1,738,877
2014 ²	7,025,780	5,240,034	74.6	5,075,425	96.9	164,609	3.1	1,785,746
2015 ²	7,036,944	5,255,593	74.7	5,097,798	97.0	157,794	3.0	1,781,352
2016 ²	7,064,736	5,303,502	75.1	5,149,948	97.1	153,554	2.9	1,761,234
2016Q1 ²	6,973,384	5,264,413	75.5	5,102,435	96.9	161,978	3.1	1,708,971
2017Q1 ²	7,166,309	5,381,244	75.1	5,235,046	97.3	146,198	2.7	1,785,065

**TABLE 1B - HISTORICAL TABLE OF LABOUR FORCE STATUS (CURRENT) OF THE HOUSEHOLD
POPULATION, 15 YEARS OF AGE AND OVER - FEMALE**

YEAR	HOUSEHOLD	LABOUR FORCE						NOT IN
	POPULATION	TOTAL	LABOUR	EMPLOYED		UNEMPLOYED		LABOUR
	(15 YEARS	LABOUR	FORCE	NUMBER	RATE	NUMBER	RATE	FORCE
	& OVER)	FORCE	PARTICI:	(% TO TOTAL		(% TO TOTAL		NUMBER
			RATE(%)	LABOUR FORCE)		LABOUR FORCE)		
2009 ¹	7,950,443	2,877,983	36.2	2,630,010	91.4	247,973	8.6	5,072,460
2010 ¹	8,088,039	2,785,605	34.4	2,570,379	92.3	215,226	7.7	5,302,434
2011 ²	7,948,209	2,723,178	34.3	2,530,377	92.9	192,801	7.1	5,225,031
2012 ²	7,925,058	2,605,721	32.9	2,442,647	93.7	163,074	6.3	5,319,336
2013 ²	8,032,315	2,845,931	35.4	2,656,938	93.4	188,993	6.6	5,186,383
2014 ²	8,108,704	2,808,850	34.6	2,625,064	93.5	183,786	6.5	5,299,854
2015 ²	8,245,001	2,958,880	35.9	2,733,178	92.4	225,702	7.6	5,286,121
2016 ²	8,383,943	3,007,180	35.9	2,797,735	93.0	209,445	7.0	5,376,764
2016Q1 ²	8,408,817	3,054,204	36.3	2,866,496	93.9	187,708	6.1	5,354,613
2017Q1 ²	8,517,801	3,201,838	37.6	2,995,161	93.5	206,677	6.5	5,315,964

¹ - Excluding Northern province

² - All the districts are included and the tables consist with reweighted estimates.

TABLE 2 - LABOUR FORCE STATUS (CURRENT) OF THE HOUSEHOLD POPULATION 15 YEARS OF AGE AND OVER, BY AGE - BOTH SEXES

AGE	HOUSEHOLD POP: (15 YEARS & OVER)	LABOUR FORCE						NOT IN LABOUR FORCE NUMBER
		TOTAL LABOUR FORCE	LABOUR FORCE PARTICI: RATE(%)	EMPLOYED		UNEMPLOYED		
				NUMBER	RATE (% TO TOTAL LABOUR FORCE)	NUMBER	RATE (% TO TOTAL LABOUR FORCE)	
ALL AGES	15,684,110	8,583,082	54.7	8,230,207	95.9	352,875	4.1	7,101,029
15 - 19 YRS	1,651,886	237,136	14.4	184,721	77.9	52,415	22.1	1,414,750
20 - 24 YRS	1,283,846	743,169	57.9	614,056	82.6	129,114	17.4	540,676
25 - 29 YRS	1,232,220	809,356	65.7	744,606	92.0	64,751	8.0	422,863
30 - 39 YRS	2,859,835	1,984,586	69.4	1,926,352	97.1	58,234	2.9	875,249
40 + YRS	8,656,324	4,808,834	55.6	4,760,474	99.0	48,361	1.0	3,847,489

TABLE 2A - LABOUR FORCE STATUS (CURRENT) OF THE HOUSEHOLD POPULATION 15 YEARS OF AGE AND OVER, BY AGE - MALE

AGE	HOUSEHOLD POP: (15 YEARS & OVER)	LABOUR FORCE						NOT IN LABOUR FORCE NUMBER
		TOTAL LABOUR FORCE	LABOUR FORCE PARTICI: RATE(%)	EMPLOYED		UNEMPLOYED		
				NUMBER	RATE (% TO TOTAL LABOUR FORCE)	NUMBER	RATE (% TO TOTAL LABOUR FORCE)	
ALL AGES	7,166,309	5,381,244	75.1	5,235,046	97.3	146,198	2.7	1,785,065
15 - 19 YRS	791,852	154,798	19.5	126,115	81.5	28,683	18.5	637,053
20 - 24 YRS	596,437	443,421	74.3	378,883	85.4	64,538	14.6	153,016
25 - 29 YRS	553,265	522,115	94.4	501,928	96.1	20,187	3.9	31,151
30 - 39 YRS	1,265,357	1,212,965	95.9	1,202,057	99.1	10,908	0.9	52,392
40 + YRS	3,959,398	3,047,945	77.0	3,026,063	99.3	21,881	0.7	911,453

TABLE 2B - LABOUR FORCE STATUS (CURRENT) OF THE HOUSEHOLD POPULATION 15 YEARS OF AGE AND OVER, BY AGE - FEMALE

AGE	HOUSEHOLD POP: (15 YEARS & OVER)	LABOUR FORCE						NOT IN LABOUR FORCE NUMBER
		TOTAL LABOUR FORCE	LABOUR FORCE PARTICI: RATE(%)	EMPLOYED		UNEMPLOYED		
				NUMBER	RATE (% TO TOTAL LABOUR FORCE)	NUMBER	RATE (% TO TOTAL LABOUR FORCE)	
ALL AGES	8,517,801	3,201,838	37.6	2,995,161	93.5	206,677	6.5	5,315,964
15 - 19 YRS	860,035	82,338	9.6	58,606	71.2	23,732	28.8	777,697
20 - 24 YRS	687,409	299,748	43.6	235,173	78.5	64,576	21.5	387,661
25 - 29 YRS	678,954	287,242	42.3	242,678	84.5	44,564	15.5	391,712
30 - 39 YRS	1,594,478	771,621	48.4	724,295	93.9	47,326	6.1	822,857
40 + YRS	4,696,926	1,760,889	37.5	1,734,410	98.5	26,479	1.5	2,936,036

These figures are to be treated with caution as the corresponding CV (Coefficient of variation)

**TABLE 3 - HISTORICAL TABLE OF CURRENTLY EMPLOYED PERSONS BY AGE GROUPS
(PERCENTAGE) - BOTH SEXES**

Year	All Ages	Age Groups				
		15 - 19 YRS	20 - 24 YRS	25 - 29 YRS	30 - 39 YRS	40+ YRS
2009 ¹	100.0	3.4	8.6	11.5	24.4	52.1
2010 ¹	100.0	3.0	8.5	10.9	24.0	53.5
2011 ²	100.0	3.1	8.6	11.0	24.3	53.0
2012 ²	100.0	2.5	8.3	11.0	25.2	53.0
2013 ²	100.0	2.7	7.9	10.1	24.8	54.5
2014 ²	100.0	2.4	7.2	9.7	25.2	55.5
2015 ²	100.0	2.2	7.5	9.7	24.5	56.1
2016 ²	100.0	2.0	7.3	9.5	24.2	57.0
2016Q1 ²	100.0	2.1	7.0	9.1	24.4	57.4
2017Q1 ²	100.0	2.2	7.5	9.0	23.4	57.8

**TABLE 3A - HISTORICAL TABLE OF CURRENTLY EMPLOYED PERSONS BY AGE GROUPS
(PERCENTAGE) - MALE**

Year	All Ages	Age Groups				
		15 - 19 YRS	20 - 24 YRS	25 - 29 YRS	30 - 39 YRS	40+ YRS
2009 ¹	100.0	3.5	8.4	11.8	24.3	52.0
2010 ¹	100.0	3.1	8.2	11.3	24.1	53.3
2011 ²	100.0	3.2	8.7	11.3	24.3	52.5
2012 ²	100.0	2.7	8.3	11.2	25.2	52.6
2013 ²	100.0	2.9	7.8	10.2	25.0	54.1
2014 ²	100.0	2.5	7.3	9.6	25.4	55.2
2015 ²	100.0	2.3	7.3	9.7	24.4	56.2
2016 ²	100.0	2.2	7.3	9.4	24.2	56.9
2016Q1 ²	100.0	2.3	7.1	8.9	24.3	57.5
2017Q1 ²	100.0	2.4	7.2	9.6	23.0	57.8

**TABLE 3B - HISTORICAL TABLE OF CURRENTLY EMPLOYED PERSONS BY AGE GROUPS
(PERCENTAGE) - FEMALE**

Year	All Ages	Age Groups				
		15 - 19 YRS	20 - 24 YRS	25 - 29 YRS	30 - 39 YRS	40+ YRS
2009 ¹	100.0	3.3	8.9	11.0	24.6	52.2
2010 ¹	100.0	2.9	9.2	10.0	23.9	54.0
2011 ²	100.0	2.8	8.5	10.3	24.4	53.9
2012 ²	100.0	2.2	8.4	10.5	25.1	53.8
2013 ²	100.0	2.4	8.0	10.0	24.3	55.3
2014 ²	100.0	2.2	7.1	9.9	24.8	56.0
2015 ²	100.0	2.1	7.8	9.6	24.7	55.9
2016 ²	100.0	1.6	7.2	9.6	24.3	57.3
2016Q1 ²	100.0	1.8	6.8	9.5	24.6	57.3
2017Q1 ²	100.0	2.0	7.9	8.1	24.2	57.9

¹ - Excluding Northern province

² - All the districts are included and the tables consist with reweighted estimates.

**TABLE 4 - HISTORICAL TABLE OF CURRENTLY EMPLOYED PERSONS BY LEVEL OF EDUCATION
(PERCENTAGE) - BOTH SEXES**

Year	Total	Level of education			
		Grade 5 & Below	Grades 6 - 10	GCE (O.L)/ NCGE	GCE (A.L)/ HNCE & above
2009 ¹	100.0	21.1	47.2	15.5	16.2
2010 ¹	100.0	20.2	48.2	15.9	15.8
2011 ²	100.0	18.8	48.1	15.7	17.4
2012 ²	100.0	18.7	47.3	17.5	16.6
2013 ²	100.1	18.2	47.9	15.9	18.1
2014 ²	100.0	16.4	48.9	16.0	18.6
2015 ²	100.0	16.7	47.4	17.3	18.6
2016Q1 ²	100.0	17.0	46.5	16.6	19.9
2017Q1 ²	100.0	16.6	46.6	16.7	20.1

**TABLE 4A - HISTORICAL TABLE OF CURRENTLY EMPLOYED PERSONS BY LEVEL OF EDUCATION
(PERCENTAGE) - MALE**

Year	Total	Level of education			
		Grade 5 & Below	Grades 6 - 10	GCE (O.L)/ NCGE	GCE (A.L)/ HNCE & above
2009 ¹	100.0	20.3	50.7	15.7	13.3
2010 ¹	100.0	19.1	51.6	16.2	13.1
2011 ²	100.0	18.3	51.0	16.1	14.6
2012 ²	100.0	18.0	51.2	17.7	13.1
2013 ²	99.9	17.8	51.5	16.0	14.6
2014 ²	100.0	16.4	52.6	16.2	14.8
2015 ²	100.0	16.7	51.1	17.7	14.6
2016Q1 ²	100.0	17.2	50.2	16.8	15.8
2017Q1 ²	100.0	16.3	50.6	16.7	16.5

**TABLE 4B - HISTORICAL TABLE OF CURRENTLY EMPLOYED PERSONS BY LEVEL OF EDUCATION
(PERCENTAGE) - FEMALE**

Year	Total	Level of education			
		Grade 5 & Below	Grades 6 - 10	GCE (O.L)/ NCGE	GCE (A.L)/ HNCE & above
2009 ¹	100.0	22.5	40.6	15.3	21.7
2010 ¹	100.0	22.3	41.3	15.3	21.1
2011 ²	100.0	19.9	42.2	14.9	23.0
2012 ²	100.0	19.9	39.3	17.2	23.7
2013 ²	100.0	18.8	41.0	15.6	24.6
2014 ²	100.0	16.5	41.7	15.8	26.0
2015 ²	100.0	16.6	40.4	16.7	26.3
2016Q1 ²	100.0	16.7	39.9	16.3	27.1
2017Q1 ²	100.0	17.1	39.7	16.6	26.6

¹ - Excluding Northern province

² - All the districts are included and the Tables consist with reweighted estimates.

**TABLE 5 - HISTORICAL TABLE OF CURRENTLY EMPLOYED PERSONS BY EMPLOYMENT STATUS
(PERCENTAGE) - BOTH SEXES**

YEAR	TOTAL EMPLOYED	EMPLOYEE			EMPLOYER	OWN	UNPAID
		TOTAL	PUBLIC	PRIVATE		ACCOUNT WORKER	FAMILY WORKER
2009 ¹	100.0	57.7	15.5	42.2	2.6	29.2	10.4
2010 ¹	100.0	55.5	14.3	41.3	2.6	31.5	10.3
2011 ²	100.0	55.1	14.6	40.5	2.9	31.5	10.6
2012 ²	100.0	56.5	15.3	41.2	2.8	31.9	8.7
2013 ²	100.0	55.7	15.2	40.5	3.0	32.2	9.1
2014 ²	100.0	56.4	15.5	40.9	2.7	32.0	8.9
2015 ²	100.0	56.1	15.1	41.0	3.1	32.3	8.4
2016Q1 ²	100.0	56.6	14.7	41.9	2.9	32.5	7.9
2017Q1 ²	100.0	58.2	14.8	43.4	3.1	30.4	8.3

**TABLE 5A - HISTORICAL TABLE OF CURRENTLY EMPLOYED PERSONS BY EMPLOYMENT STATUS
(PERCENTAGE) - MALE**

YEAR	TOTAL EMPLOYED	EMPLOYEE			EMPLOYER	OWN	UNPAID
		TOTAL	PUBLIC	PRIVATE		ACCOUNT WORKER	FAMILY WORKER
2009 ¹	100.0	59.2	13.7	45.5	3.6	33.0	4.3
2010 ¹	100.0	56.2	12.8	43.4	3.5	36.0	4.3
2011 ²	100.0	56.0	12.8	43.1	3.8	35.9	4.3
2012 ²	100.0	56.7	12.9	43.8	3.8	35.9	3.6
2013 ²	100.0	56.6	12.9	43.8	4.1	36.2	3.0
2014 ²	100.0	57.3	13.1	44.2	3.6	36.2	2.8
2015 ²	100.0	56.7	12.8	43.9	4.2	36.3	2.8
2016Q1 ²	100.0	57.6	12.6	45.0	4.0	35.7	2.7
2017Q1 ²	100.0	59.4	12.4	46.9	4.0	33.8	2.8

**TABLE 5B - HISTORICAL TABLE OF CURRENTLY EMPLOYED PERSONS BY EMPLOYMENT STATUS
(PERCENTAGE) - FEMALE**

YEAR	TOTAL EMPLOYED	EMPLOYEE			EMPLOYER	OWN	UNPAID
		TOTAL	PUBLIC	PRIVATE		ACCOUNT WORKER	FAMILY WORKER
2009 ¹	100.0	55.0	19.0	36.0	0.9	22.1	22.0
2010 ¹	100.0	54.3	17.3	37.0	0.8	22.6	22.3
2011 ²	100.0	53.3	18.1	35.2	0.9	22.7	23.1
2012 ²	100.0	56.1	20.2	35.9	0.9	23.7	19.3
2013 ²	100.0	53.9	19.7	34.3	0.9	24.6	20.5
2014 ²	100.0	54.8	20.1	34.7	1.0	23.7	20.5
2015 ²	100.0	55.1	19.3	35.8	1.1	24.9	18.8
2016Q1 ²	100.0	55.0	18.5	36.5	1.0	26.9	17.2
2017Q1 ²	100.0	56.1	18.8	37.3	1.6	24.6	17.8

■ These figures are to be treated with caution as the corresponding CV (Coefficient of variation)

¹ - Excluding Northern province

² - All the districts are included and the Tables consist with reweighted estimates.

Table 6 - Currently Employed person by Industry group (Based on ISIC Fourth Revision) - both sexes

Year	Total	Industry Group																
		1	2	3	6	7	8	9	10	11	13	14	15	16	17	19	20	Other
2013	7,681,279	2,321,215	91,045	1,366,162	539,523	1,046,386	467,835	171,236	55,409	137,344	60,917	95,873	570,351	301,768	128,034	121,161	162,013	45,007
2014	7,700,489	2,222,859	74,643	1,389,250	563,532	1,012,447	481,331	181,246	63,038	145,871	47,356	101,247	594,300	313,926	126,950	131,274	195,125	56,094
2015	7,830,976	2,244,547	60,614	1,407,908	549,649	1,059,803	480,338	202,780	52,372	144,507	64,950	120,218	600,249	324,175	137,366	143,768	177,255	60,477
2016Q1	7,968,931	2,274,722	68,323	1,424,370	575,760	1,046,908	513,312	205,486	45,887	169,701	66,659	113,317	633,206	340,086	137,035	109,597	199,124	45,438
2017Q1	8,230,207	2,221,761	49,566	1,571,862	684,970	1,082,766	501,556	193,613	69,871	153,957	60,406	126,487	617,182	379,848	145,561	122,189	197,871	50,742

Note: These Industry groups are based on ISIC - Rev. 4

1 Agriculture, forestry and fishing (A)

2 Mining & quarrying (B)

3 Manufacturing (C)

6 Construction, Electricity, gas, steam and air conditioning supply, Water supply, sewerage, waste management and remediation activities (D, E,F)

7 Wholesale and retail trade, repair of motor vehicles and motor cycles(G)

8 Transportation and storage (H)

9 Accommodation and food services activities (I)

10 Information and communication (J)

11 Financial and insurance activities (K)

13 Professional, scientific and technical activities (M)

14 Administrative and support service activities (N)

15 Public administration and defence compulsory social security (O)

16 Education (P)

17 Human health and social work activities (Q)

19 Other service activities (S)

20 Activities of households as employers; undifferentiated goods and services - producing activities of households for own use (T)

Other

Other

12 Real estate activities (L)

18 Arts, entertainment and recreation (R)

21 Activities of extra territorial organizations & bodies (U)

Table 6A - Currently Employed person by Industry group (Based on ISIC Fourth Revision) - Male

Year	Total	Industry Group																
		1	2	3	6	7	8	9	10	11	13	14	15	16	17	19	20	Other
2013	5,024,340	1,423,393	80,653	722,816	524,027	744,407	446,960	123,218	42,128	80,102	37,716	70,383	371,194	90,634	49,153	85,164	95,909	36,483
2014	5,075,425	1,375,427	69,796	734,033	540,150	723,692	467,394	124,655	47,897	82,803	31,456	81,190	384,657	96,971	55,148	102,024	115,389	42,743
2015	5,097,797	1,360,831	57,116	741,643	527,419	756,298	465,920	140,042	41,206	79,485	42,853	91,639	395,291	92,824	45,976	105,307	107,469	46,478
2016Q1	5,102,435	1,362,990	64,590	737,848	552,591	727,072	496,639	120,965	34,952	96,127	36,097	82,587	402,339	102,231	51,188	80,753	123,184	30,280
2017Q1	5,235,046	1,311,760	45,821	795,706	651,658	766,708	483,010	125,261	47,423	101,328	45,585	99,039	382,710	112,944	46,326	77,349	108,086	34,333

Table 6B - Currently Employed person by Industry group (Based on ISIC Fourth Revision) - Female

Year	Total	Industry Group																
		1	2	3	6	7	8	9	10	11	13	14	15	16	17	19	20	Other
2013	2,656,938	897,822	10,392	643,346	15,495	301,979	20,875	48,018	13,281	57,242	23,201	25,490	199,157	211,134	78,881	35,997	66,104	8,524
2014	2,625,065	847,432	4,847	655,218	23,382	288,755	13,937	56,591	15,141	63,069	15,900	20,057	209,643	216,955	71,802	29,250	79,735	13,351
2015	2,733,179	883,716	3,498	666,265	22,230	303,507	14,418	62,738	11,165	65,023	22,097	28,579	204,958	231,350	91,389	38,461	69,786	13,999
2016Q1	2,866,496	911,732	3,733	686,523	23,169	319,836	16,673	84,520	10,935	73,574	30,562	30,729	230,866	237,854	85,846	28,844	75,940	15,158
2017Q1	2,995,161	910,001	3,745	776,156	33,312	316,058	18,546	68,352	22,448	52,629	14,820	27,447	234,472	266,904	99,236	44,840	89,785	16,409

Note: These Industry groups are based on ISIC - Rev. 4

☐ These figures are to be treated with caution as the corresponding CV (Coefficient of variation)

1 Agriculture, forestry and fishing (A)

2 Mining & quarrying (B)

3 Manufacturing (C)

6 Construction, Electricity, gas, steam and air conditioning supply, Water supply, sewerage, waste management and remediation activities (D, E,F)

7 Wholesale and retail trade, repair of motor vehicles and motor cycles(G)

8 Transportation and storage (H)

9 Accommodation and food services activities (I)

10 Information and communication (J)

11 Financial and insurance activities (K)

13 Professional, scientific and technical activities (M)

14 Administrative and support service activities (N)

15 Public administration and defence compulsory social security (O)

16 Education (P)

17 Human health and social work activities (Q)

19 Other service activities (S)

20 Activities of households as employers; undifferentiated goods and services - producing activities of households for own use (T)

Other

Other

12 Real estate activities (L)

18 Arts, entertainment and recreation (R)

21 Activities of extra territorial organizations & bodies (U)

Table 6C: Historical table of currently employed population by major industry group - Both sexes

Major Industry Group	Year				
	2013	2014	2015	2016Q1	2017Q1
Total	7,681,279	7,700,490	7,830,976	7,968,931	8,230,207
Agriculture	2,321,215	2,222,859	2,244,547	2,274,722	2,221,761
Industry	1,996,730	2,027,426	2,018,171	2,068,453	2,306,398
Services	3,363,334	3,450,205	3,568,258	3,625,756	3,702,049

Table 6D: Historical table of currently employed population by major industry group (percentage) - Both sexes

Major Industry Group	Year				
	2013	2014	2015	2016Q1	2017Q1
Total	100.0	100.0	100.0	100.0	100.0
Agriculture	30.2	28.9	28.7	28.5	27.0
Industry	26.0	26.3	25.8	26.0	28.0
Services	43.8	44.8	45.6	45.5	45.0

Note: These Industry groups are based on ISIC - Rev. 4

Agriculture

1. Agriculture Forestry and Fishery (A)

Industries

1. Mining & Quarrying (B)
2. Manufacturing (C)
3. Construction, Electricity, gas, steam and air conditioning supply, Water supply, sewerage, waste management and remediation activities (D, E,F)

Services

1. Wholesale and retail trade, repair of motor vehicles and motor cycles(G)
2. Transportation and storage (H)
3. Accommodation and food services activities (I)
4. Information and communication (J)
5. Financial and insurance activities (K)
6. Professional, scientific and technical activities (M)
7. Administrative and support service activities (N)
8. Public administration and defence compulsory social security (O)
9. Education (P)
10. Human health and social work activities (Q)
11. Other service activities (S)
12. Activities of households as employers; undifferentiated goods and services - producing activities of households for own use (T)
13. Real estate activities (L) Arts, entertainment and recreation (R) Activities of extra territorial organizations & bodies (U)

Table 7 - Currently Employed person by Occupation group (Based on ISCO 08) - Both sexes

Year	Total	Occupation group									
		1	2	3	4	5	6	7	8	9	10
2013	7,681,279	365,049	483,587	447,965	281,095	847,409	1,490,219	1,302,496	640,410	1,773,456	49,593
2014	7,700,489	353,465	491,521	450,247	327,479	902,710	1,562,251	1,312,975	635,899	1,633,672	30,270
2015	7,830,976	480,097	511,230	470,645	311,455	852,722	1,457,350	1,266,101	673,380	1,766,704	41,292
2016Q1	7,968,931	456,835	539,183	489,783	322,607	822,671	1,531,824	1,271,674	701,583	1,785,315	47,457
2017Q1	8,230,207	505,890	515,526	533,477	345,101	845,433	1,402,215	1,411,424	701,082	1,928,091	41,970
1	Managers, Senior Officials and Legislators				6	Skilled Agricultura, Forestry and Fishery workers					
2	Professionals				7	Craft and Related Trades workers					
3	Technicians and Associate Professionals				8	Plant and Machine operators and Assemblers					
4	Clerks and Clerical support workers				9	Elementary occupations					
5	Services and Sales workers				10	Armed Forces Occupations & unidentified occupations					

Table 7A - Currently Employed person by Occupation group (Based on ISCO 08) - Male

Year	Total	Occupation group									
		1	2	3	4	5	6	7	8	9	10
2013	5,024,340	258,974	184,962	288,509	138,934	587,580	980,699	884,473	556,576	1,099,578	44,055
2014	5,075,424	265,819	175,533	301,206	157,091	630,281	1,017,807	881,891	559,814	1,056,416	29,566
2015	5,097,798	355,643	174,644	318,745	150,246	585,455	965,084	833,470	577,038	1,101,377	36,096
2016Q1	5,102,435	321,459	194,428	325,150	154,288	535,803	1,005,293	813,250	615,544	1,097,039	40,181
2017Q1	5,235,046	381,904	172,715	344,104	166,115	560,748	892,552	895,405	588,812	1,193,399	39,294

Table 7B - Currently Employed person by Occupation group (Based on ISCO 08) - Female

Year	Total	Occupation group									
		1	2	3	4	5	6	7	8	9	10
2013	2,656,937	106,075	298,625	159,456	142,161	259,829	509,519	418,023	83,834	673,878	5,537
2014	2,625,065	87,646	315,988	149,041	170,388	272,429	544,444	431,084	76,085	577,256	704
2015	2,733,178	124,454	336,586	151,900	161,209	267,267	492,267	432,631	96,342	665,326	5,196
2016Q1	2,866,496	135,376	344,755	164,633	168,319	286,867	526,532	458,424	86,039	688,276	7,276
2017Q1	2,995,161	123,986	342,811	189,373	178,986	284,685	509,663	516,019	112,270	734,692	2,676

These figures are to be treated with caution as the corresponding CV (Coefficient of variation) values are high.

- | | | | |
|---|--|----|---|
| 1 | Managers, Senior Officials and Legislators | 6 | Skilled Agriculture, Forestry and Fishery workers |
| 2 | Professionals | 7 | Craft and Related Trades workers |
| 3 | Technicians and Associate Professionals | 8 | Plant and Machine operators and Assemblers |
| 4 | Clerks and Clerical support workers | 9 | Elementary occupations |
| 5 | Services and Sales workers | 10 | Armed Forces Occupations & unidentified occupations |

TABLE 8 - CURRENTLY EMPLOYED PERSONS BY HOURS PER WEEK ACTUALLY WORKED AT THE MAIN JOB AND MAJOR INDUSTRIAL GROUP (PERCENTAGE) - BOTH SEXES

MAJOR INDUSTRIAL GROUP	TOTAL	0 *	1 - 9	10 - 19	20 - 29	30 - 39	40 - 49	50 & OVER
Total	100.0	3.5	1.6	5.0	8.2	13.5	36.5	31.7
1	100.0	6.3	4.0	10.0	13.9	19.1	32.0	14.7
2	100.0	2.1	..	4.3	3.2	18.5	34.7	37.2
3	100.0	2.1	0.8	4.9	8.4	9.4	38.4	36.0
6	100.0	4.0	1.0	3.6	6.8	10.2	40.9	33.5
7	100.0	1.6	0.2	2.7	6.0	8.3	28.7	52.5
8	100.0	2.6	0.2	1.5	4.4	9.3	29.4	52.6
9	100.0	3.9	0.4	4.0	6.2	9.8	18.4	57.2
10	100.0	2.5	1.5	3.3	1.5	6.5	50.0	34.8
11	100.0	3.9	1.3	2.7	63.3	28.9
13	100.0	9.1	..	3.6	7.5	6.9	42.2	30.6
14	100.0	3.3	..	2.3	4.1	3.7	38.3	48.3
15	100.0	1.0	0.8	0.4	1.4	4.5	67.3	24.7
16	100.0	1.8	1.4	3.3	8.2	56.3	23.2	5.8
17	100.0	4.9	1.5	1.0	2.2	5.7	42.7	42.0
19	100.0	2.9	1.8	7.9	8.5	7.0	34.3	37.5
20	100.0	2.5	0.9	3.7	10.2	13.3	30.5	38.8
Other	100.0	5.0	5.6	2.5	3.9	4.9	41.7	36.4

* Has a job but not at work during the reference week

.. Net reported

These figures are to be treated with caution as the corresponding CV (Coefficient of variation) values are high.

Industry group

1 Agriculture, forestry and fishing (A)

2 Mining & quarrying (B)

3 Manufacturing (C)

6 Construction, Electricity, gas, steam and air conditioning supply, Water supply, sewerage, waste management and remediation activities (D, E,F)

7 Wholesale and retail trade, repair of motor vehicles and motor cycles(G)

8 Transportation and storage (H)

9 Accommodation and food services activities (I)

10 Information and communication (J)

11 Financial and insurance activities (K)

13 Professional, scientific and technical activities (M)

14 Administrative and support service activities (N)

15 Public administration and defence compulsory social security (O)

16 Education (P)

17 Human health and social work activities (Q)

19 Other service activities (S)

20 Activities of households as employers; undifferentiated goods and services - producing activities of households for own use (T)

Other

Other

12 Real estate activities (L)

18 Arts, entertainment and recreation (R)

21 Activities of extra territorial organizations & bodies (U)

**TABLE 9 - HISTORICAL TABLE OF CURRENTLY UNEMPLOYED PERSONS BY AGE GROUPS
(PERCENTAGE) - BOTH SEXES**

YEAR	TOTAL	AGE GROUPS				
		15 - 19 YRS	20 - 24 YRS	25 - 29 YRS	30 - 39 YRS	40 + YRS
2009 ¹	100.0	14.5	37.5	21.3	15.1	11.6
2010 ¹	100.0	14.8	38.7	21.2	14.7	10.6
2011 ²	100.0	12.7	42.2	20.7	15.9	8.5
2012 ²	100.0	14.1	40.5	18.8	15.8	10.8
2013 ²	100.0	13.7	41.0	18.1	15.1	12.1
2014 ²	100.0	14.2	39.8	19.3	15.4	11.3
2015 ²	100.0	14.5	37.4	20.5	15.8	11.8
2016Q1 ²	100.0	17.6	39.1	21.5	12.8	9.0
2017Q1 ²	100.0	14.9	36.6	18.3	16.5	13.7

**TABLE 9A - HISTORICAL TABLE OF CURRENTLY UNEMPLOYED PERSONS BY AGE GROUPS
(PERCENTAGE) - MALE**

YEAR	TOTAL	AGE GROUPS				
		15 - 19 YRS	20 - 24 YRS	25 - 29 YRS	30 - 39 YRS	40+ YRS
2009 ¹	100.0	17.9	36.4	18.9	12.4	14.4
2010 ¹	100.0	19.6	41.2	15.5	11.7	12.0
2011 ²	100.0	17.6	44.7	17.1	13.1	7.6
2012 ²	100.0	19.6	41.6	17.0	12.3	9.4
2013 ²	100.0	16.9	44.0	15.5	11.5	12.1
2014 ²	100.0	20.1	37.6	18.3	11.7	12.3
2015 ²	100.0	21.7	39.9	14.6	12.6	11.2
2016Q1 ²	100.0	24.7	44.6	19.6	5.9	5.2
2017Q1 ²	100.0	19.6	44.1	13.8	7.5	15.0

**TABLE 9B - HISTORICAL TABLE OF CURRENTLY UNEMPLOYED PERSONS BY AGE GROUPS
(PERCENTAGE) - FEMALE**

YEAR	TOTAL	AGE GROUPS				
		15 - 19 YRS	20 - 24 YRS	25 - 29 YRS	30 - 39 YRS	40+ YRS
2009 ¹	100.0	11.5	38.5	23.5	17.5	9.0
2010 ¹	100.0	10.7	36.5	26.1	17.4	9.3
2011 ²	100.0	9.1	40.4	23.4	17.9	9.2
2012 ²	100.0	9.2	39.6	20.4	18.9	12.0
2013 ²	100.0	11.0	38.4	20.3	18.2	12.1
2014 ²	100.0	8.9	41.7	20.2	18.7	10.4
2015 ²	100.0	9.4	35.6	24.6	18.1	12.2
2016Q1 ²	100.0	11.5	34.3	23.1	18.8	12.3
2017Q1 ²	100.0	11.5	31.2	21.6	22.9	12.8

These figures are to be treated with caution as the corresponding CV (Coefficient of variation)

¹ - Excluding Northern province

² - All the districts are included and the Tables consist with reweighted estimates.

TABLE 10 - HISTORICAL TABLE OF CURRENTLY UNEMPLOYED PERSONS BY LEVEL OF EDUCATION (PERCENTAGE) - BOTH SEXES

YEAR	TOTAL	LEVEL OF EDUCATION			
		GRADE 5 & BELOW	GRADES 6 - 10	GCE(O/L) NCGE	GCE(A/L) HNCE & ABOVE
2009 ¹	100.0	4.3	39.9	23.1	32.7
2010 ¹	100.0	2.7	34.9	22.7	39.7
2011 ²	100.0	2.9	38.1	19.8	39.2
2012 ²	100.0	2.6	37.4	27.2	32.9
2013 ²	100.0	3.9	36.5	22.1	37.5
2014 ²	100.0	3.1	37.7	22.4	36.8
2015 ²	100.0	2.5	34.4	24.4	38.7
2016Q1 ²	100.0	3.8	36.6	21.9	37.8
2017Q1 ²	100.0	4.5	32.1	23.5	39.9

TABLE 10A - HISTORICAL TABLE OF CURRENTLY UNEMPLOYED PERSONS BY LEVEL OF EDUCATION (PERCENTAGE) - MALE

YEAR	TOTAL	LEVEL OF EDUCATION			
		GRADE 5 & BELOW	GRADES 6 - 10	GCE(O/L) NCGE	GCE(A/L) HNCE & ABOVE
2009 ¹	100.0	4.4	48.0	25.3	22.3
2010 ¹	100.0	3.4	40.4	25.4	30.9
2011 ²	100.0	2.0	47.8	20.3	29.9
2012 ²	100.0	2.0	46.7	29.6	21.7
2013 ²	100.0	4.7	43.7	24.3	27.4
2014 ²	100.0	3.1	48.1	22.7	26.0
2015 ²	100.0	1.7	44.1	30.9	23.4
2016Q1 ²	100.0	1.0	43.7	24.1	31.3
2017Q1 ²	100.0	1.3	39.1	29.2	30.4

TABLE 10B - HISTORICAL TABLE OF CURRENTLY UNEMPLOYED PERSONS BY LEVEL OF EDUCATION (PERCENTAGE) - FEMALE

YEAR	TOTAL	LEVEL OF EDUCATION			
		GRADE 5 & BELOW	GRADES 6 - 10	GCE(O/L) NCGE	GCE(A/L) HNCE & ABOVE
2009 ¹	100.0	4.3	32.5	21.1	42.1
2010 ¹	100.0	2.1	30.1	20.5	47.3
2011 ²	100.0	3.5	30.9	19.4	46.1
2012 ²	100.0	3.0	29.0	25.0	43.0
2013 ²	100.0	3.2	30.2	20.3	46.2
2014 ²	100.0	3.1	28.5	22.1	46.4
2015 ²	100.0	3.0	27.7	19.9	49.4
2016Q1 ²	100.0	6.1	30.5	20.0	43.4
2017Q1 ²	100.0	6.7	27.1	19.5	46.7

These figures are to be treated with caution as the corresponding CV (Coefficient of variation) values are high.

¹ - Excluding Northern province

² - All the districts are included and the Tables consist with reweighted estimates.

TABLE 11 - CURRENTLY UNEMPLOYED PERSONS BY SEX AND DURATION OF UNEMPLOYMENT

Sex	Total	Duration		
		Less than 6 months	6 to less than 12 months	12+ months
Both sexes	352,875	127,003	75,750	150,122
%	100.0	36.0	21.5	42.5
Male	146,198	59,202	39,410	47,586
%	100.0	40.5	27.0	32.5
Female	206,677	67,801	36,340	102,536
%	100.0	32.8	17.6	49.6

STANDARD ERROR AND COEFFICIENT OF VARIATION OF SELECTED VARIABLES

	Estimated Value	Standard Error	Coefficient of Variation (%)	Estimated Value (Ratio)	Standard Error	Coefficient of Variation (%)
General labour force characteristics						
Population (15 years & over)	15,684,110	122,857	0.8			
Employed Population	8,230,207	93,303	1.1			
Unemployed Population	352,875	22,757	6.4			
Employment Rate				95.9	0.26	0.27
Unemployment Rate				4.1	0.26	6.28
Labour Force	8,583,082	96,084	1.1			
Not in Labour Force	7,101,029	95,712	1.3			
Employed persons by major industry Groups						
1	2,221,761	84,175	3.8			
2	49,566	9,366	18.9			
3	1,571,862	55,870	3.6			
6	684,970	30,263	4.4			
7	1,082,766	43,051	4.0			
8	501,556	25,660	5.1			
9	193,613	17,334	9.0			
10	69,871	9,289	13.3			
11	153,957	13,622	8.8			
13	60,406	8,498	14.1			
14	126,487	12,855	10.2			
15	617,182	31,594	5.1			
16	379,848	24,201	6.4			
17	145,561	12,970	8.9			
19	122,189	12,312	10.1			
20	197,871	17,272	8.7			
Other	50,742	8,089	15.9			
Unemployed persons by level of education						
Below grade 6	15,757	4,857	30.8			
Grade 6 - 10	113,218	9,373	8.3			
G.C.E.(O/L)/N.C.G.E.	82,928	9,257	11.2			
G.C.E.(A/L)/H.N.C.E. & above	140,972	11,122	7.9			

Industry group

1 Agriculture, forestry and fishing (A)
2 Mining & quarrying (B)
3 Manufacturing (C)
6 Construction, Electricity, gas, steam and air conditioning supply, Water supply, sewerage, waste management and remediation activities (D, E,F)
7 Wholesale and retail trade, repair of motor vehicles and motor cycles(G)
8 Transportation and storage (H)
9 Accommodation and food services activities (I)
10 Information and communication (J)
11 Financial and insurance activities (K)
13 Professional, scientific and technical activities (M)
14 Administrative and support service activities (N)
15 Public administration and defence compulsory social security (O)
16 Education (P)
17 Human health and social work activities (Q)
19 Other service activities (S)
20 Activities of households as employers; undifferentiated goods and services - producing activities of households for own use (T)
Other
Other
Real estate activities (L)
Arts, entertainment and recreation (R)
Activities of extra territorial organizations & bodies (U)

Special Statistical Appendix

EXPLANATORY NOTES

Coverage

Sri Lanka Labour Force Survey was designed to measure the levels and trends of employment, unemployment and labour force in Sri Lanka. This survey is being conducted quarterly, since the first quarter of 1990.

This quarterly survey of households is conducted through a scientifically selected sample designed to represent the civilian non-institutional population. Respondents are interviewed to obtain information about the employment status etc. of each member of the household 15 years of age and older.

The field work of the survey is done during the third week of each month, Monday through Sunday. This is known as the "survey week". The inquiry relates to activity or status are referred in the preceding week of the survey week; referred to as the "reference week".

The concepts and definitions underlying labour force data are as follows.

Concepts & Definitions

1. **Labour force:** The labour force is composed of the economically active population 15 years of age and over.
2. **The Economically Active Population:** is defined as those persons who are/were employed or unemployed during the reference period of the survey.
3. **Employed:** Persons, who during the reference period, worked as paid employees, employers, own account workers (self employed), or unpaid family workers are said to be employed. This includes persons with a job but not at work during the reference period.
4. **Unemployed:** Persons who are seeking and available for work, but had no employment during the reference period.
5. **Currently Economically Active:** A person who was employed or unemployed during the current reference period is considered to be currently economically active.
6. **Not in the Labour Force (not economically active):** Persons who were neither working nor available/looking for work are classified as "not in the labour force". Persons are not in the labour force for such reasons as: full time care of the household, full – time students, retired or old age, infirmed or disabled, or are not interested in working for one reason or another. Current and Usual definitions apply.
7. **Criteria for classification of underemployment:** In order to classify an employed persons as visibly underemployed,

(i) If the person has worked less than the normal duration in his/her main activity

In Sri Lanka scenario, 35 hours per week is taken as the cut-off point applicable to all workers, except government teachers. As in practice, though teachers do have a normal duration of work which is below the general cut-off point, they should be on a full time schedule according to the nature of their job. Further, those who do have a secondary job or those who are employers, were considered as having worked the normal duration in their respective activity.

Therefore, if the person has worked less than the normal duration in his/her activity (as described above), then the person is further questioned to ascertain whether he/She is prepared and available for further work if provided. Such persons are considered underemployed in their respective employment.

(ii) If the person has worked more than the normal duration in his/her activity

If the person has worked even more than 35 hours as usually, but he has worked less than 35 hours actually in the reference period, only due to the off season or bad weather, such persons were also further questioned to check their underemployment situation, considering them as a special category.

8. Informal Sector Employment

In order to classify a person to be employed in informal sector employment, following information were used.

- (i) Registration of the organization
- (ii) Accounts keeping practices of the organization
- (iii) Total number of regular employees of the organization.

Reliability of the estimates

Statistics based on the quarterly labour force data are subject to both sampling and non - sampling errors. When a sample rather than the entire population is surveyed, there is a chance that the sample estimates may differ from the "true" population values they represent.

The exact differences or sampling error, varies depending on the particular sample selected, and this variability is measured by the standard error of the estimate. There is about a 95 percent chance, or level of confidence, that an estimate based on a sample will differ by no more than 1.96 standard errors from the " true" population value, because of sampling error. Analyses relating to the Labour Force Survey are generally conducted at the 95 percent level of confidence.

For example, the confidence interval for the quarterly unemployment rate is calculated as follows

When the estimated unemployment rate is 4.5 and standard error of unemployment rate is 0.275 then 95% confidence interval

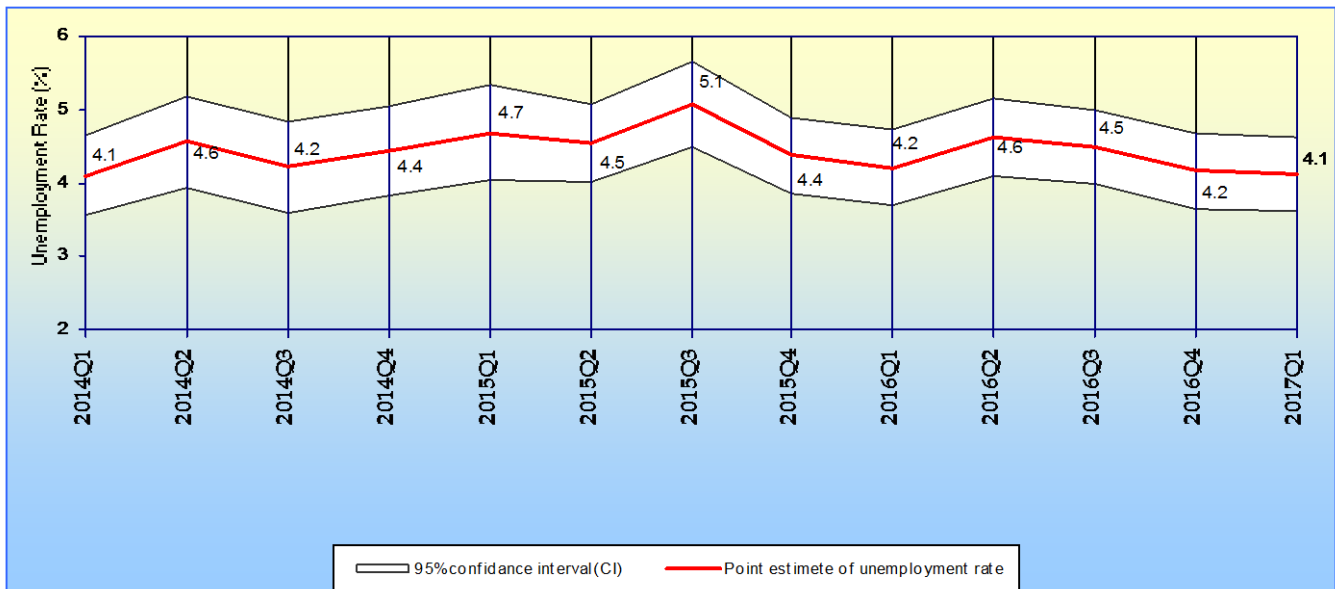
Estimated value (of the unemployment rate) \pm (standard error) * (1.96)

4.5 \pm (0.275) * (1.96)
 (4.5 \pm 0.539)

This means, the 95 percent confidence interval on the quarterly unemployment rate could range from (5.6 to 7.2). This implies that there is about 95 percent chance that the "true" unemployment rate lies within this interval. This range includes all the values range from 5.6 to 7.2. When the comparison of this estimate is done between two quarters, if any of the value within the 95 percent confidence interval of one quarter overlaps with the confidence interval of the other , it means that the estimates of this two quarters are not significantly different.

Therefore, in each quarterly labour force report, a separate table is given including approximate standard errors for some selected variables, so that users could understand this statistical scenario clearly.

Distribution of unemployment rates and 95% confidence intervals (2014Q1 - 2017Q1)



Note:

As seen in figure 2, it is very important to note that, there were no statistically significant differences between the unemployment rates reported in different time periods of 2013/2016, when sampling error was considered.

Change in survey schedule

Current survey concepts and methods are very similar to those introduced at the beginning of the survey in 1990. However, some changes have been made over the years to improve the accuracy and usefulness of the data. In January 2006, some improvements were made to the labour force survey schedule in order to fulfill the requirements of data users and also to provide additional information for planning purposes. The revision was made focusing on literacy, household economic activities, and informal sector employment and under employment etc.

From January , 2013 onwards, the lower bound of working age populations is considered as age 15, hence age 15 and over population is considered as working age population. The survey schedule is updated to obtain more precise information on following age, informal employment, informal sector, secondary occupation, wages & income , unemployment & trainings.

New Industry & Occupation classifications

From January 2013 onward the survey uses new industry & occupation classifications, such as

SLIC Rev 4:- Sri Lanka Standard Industry Classification based on International Standard Industry classification - Rev.4 (ISIC Rev 4)

SLSCO 08:- Sri Lanka Standard Classification of Occupation-2008 based on International Standard Classification of Occupation-2008 (ISCO 2008)

Note :

It is important to note that, all the data published here are the estimates based on a sample survey and these are subject to sampling errors. These sampling errors can be statistically evaluated from the survey results. Therefore, sampling error is normally measured in terms of the standard error of the particular variable. Standard error could be used to calculate the confidence limits with a prescribed accuracy where the true value of the estimates lies.

Further reliability of the estimates can be expressed in terms of Coefficient of Variation (CV). The CV is a relative measure of the sampling error and is calculated as sampling error divided by the expected value of the given characteristic.

In view of this, following table is given to show the estimates for some selected variables, it's standard error, CV and 95% Confidence interval.

It is also important to note that all the estimates we publish in this report are subject to sampling error and one should be cautious in the interpretation of results, especially with respect to the trends over time.

Estimate of Confidence Intervals for some selected characteristics

Year	Labour Force					Employed				
	No.	Standard error	C.V (%)	95% C.I.		No.	Standard error	C.V (%)	95% C.I.	
				Lower	Upper				Lower	Upper
2009 ¹	8,051,089	107,213	1.33	7,840,876	8,261,302	7,579,835	102,161	1.35	7,379,527	7,780,143
2010 ¹	8,096,477	110,375	1.36	7,880,065	8,312,889	7,696,142	105,457	1.37	7,489,372	7,902,913
2011 ²	7,926,445	72,730	0.92	7,783,791	8,069,099	7,591,591	69,573	0.92	7,455,129	7,728,053
2012 ²	7,798,407	66,291	0.85	7,668,392	7,928,422	7,488,704	63,894	0.85	7,363,389	7,614,018
2013 ²	8,033,804	55,985	0.70	7,924,021	8,143,587	7,681,279	54,298	0.71	7,574,802	7,787,755
2014 ²	8,048,884	60,868	0.76	7,929,525	8,168,243	7,700,489	58,417	0.76	7,585,937	7,815,042
2015 ²	8,214,473	52,021	0.63	8,112,463	8,316,483	7,830,976	50,426	0.64	7,732,093	7,929,860
2016Q1 ²	8,318,617	152,067	1.83	8,019,950	8,617,284	7,968,931	147,803	1.85	7,678,638	8,259,223
2017Q1 ²	8,583,082	96,084	1.12	8,394,371	8,771,793	8,230,207	93,303	1.13	8,046,958	8,413,456

Year	Unemployed					Unemployment Rate				
	No.	Standard error	C.V (%)	95% C.I.		Rate	Standard error	C.V (%)	95% C.I.	
				Lower	Upper				Lower	Upper
2009 ¹	471,254	15,683	3.33	440,503	502,004	5.9	0.2	3.07	5.5	6.2
2010 ¹	400,335	14,742	3.68	371,430	429,240	4.9	0.2	3.39	4.6	5.3
2011 ²	334,854	15,691	4.69	304,078	365,631	4.2	0.2	4.49	3.9	4.6
2012 ²	309,703	13,287	4.29	283,643	335,763	4.0	0.2	4.14	3.6	4.3
2013 ²	352,526	12,030	3.41	328,935	376,116	4.4	0.1	3.31	4.1	4.7
2014 ²	348,395	12,697	3.64	323,497	373,293	4.3	0.2	3.50	4.0	4.6
2015 ²	383,496	12,283	3.20	359,410	407,583	4.7	0.1	3.11	4.4	5.0
2016Q1 ²	349,686	22,599	6.46	305,300	394,073	4.4	0.3	6.52	3.8	4.9
2017Q1 ²	352,875	22,757	6.45	308,179	397,570	4.1	0.3	6.28	3.6	4.6

¹ - Excluding Northern provinces

² - All the districts are included and the Tables consist with reweighted estimates

ALTERNATIVE ESTIMATES

Alternative Estimates of Employment, Unemployment and Labour Force Characteristics

Official employment, unemployment and labour force characteristics are estimated at the Sri Lanka Labour Force Survey, based on the internationally comparable concepts and definitions recommended by the ILO. However the validity of the concepts and definitions used at the survey is questioned very often in some forums, for the appropriateness of these concepts and definitions in the Sri Lankan context.

The concepts and definitions, which were found to be controversial, are as below.

- (1) **Number of Hours of Work** : A person who work **at least one hour** during the reference week, is considered **employed**, under these definitions.
- (2) **Working Age Population** : All persons of **age 10 years and over** are considered to be in the working age, before 2013. However, this was changed as **age 15 and over** from 2013 onward.
- (3) **Employment Status** : All,
 - a) Paid employees, (those who work for wages/salaries).
 - b) Employers (who have at least one paid employee under them).
 - c) Own account workers (who carry out the economic activity without having anypaid employees).
 - d) Contributing family workers (who make their contribution to the economic activities carried out by their own household, without wages/salaries).

The validity of the above concepts and definitions is raised due to the following reasons.

- (1) **Number of Hours of Work** : Some pointed out that one hour per week is too low, to consider a person to be employed.
- (2) **Working Age Population** : Some pointed out those persons in the age group 10-14 yrs. are too young to be considered in the working age. (From 2013 onward the working age population is considered as age 15 and over).
- (3) **Employment Status** : Some pointed out that 'contributing family workers' may work in the family enterprise without payment because they have no other work, and so it is not appropriate to consider them as employed.

An attempt has been made to produce '**Alternative estimates of Employment, Unemployment and Labour Force Characteristics,**' by revising the original concepts and definitions so that the above issues are addressed as explained below.

The revisions made are,

- (1) **Number of Hours of Work** : Persons who work **20 hours or more per week only** are considered to be employed.
- (2) **Contributing Family Worker** : Contributing family workers are **not** considered as employed. They are considered as **economically inactive** (not in the labour force) so only, **a) paid employees b) employers and c) own account workers are considered to be employed.**

Following tables are based on the above alternative concepts and definitions.

Alternative Estimates of Employment, Unemployment and Labour Force Characteristics

TABLE 1 - LABOUR FORCE STATUS OF HOUSEHOLD POPULATION 15 YEARS & OVER (ALTERNATIVE ESTIMATES)

YEAR	HOUSEHOLD POPULATION (15 YEARS & OVER)	TOTAL LABOUR FORCE	LABOUR FORCE PARTICI: RATE(%)	LABOUR FORCE				NOT IN LABOUR FORCE NUMBER
				EMPLOYED		UNEMPLOYED		
				NUMBER	RATE (% TO TOTAL LABOUR FORCE)	NUMBER	RATE (% TO TOTAL LABOUR FORCE)	
2009 ¹	14,876,264	6,836,598	46.0	6,365,344	93.1	471,254	6.9	8,039,665
2010 ¹	15,166,285	6,892,444	45.4	6,492,109	94.2	400,335	5.8	8,273,841
2011 ²	14,975,989	6,687,771	44.7	6,352,916	95.0	334,854	5.0	8,288,219
2012 ²	14,857,578	6,846,805	46.1	6,537,101	95.5	309,703	4.5	8,010,773
2013 ²	14,958,239	6,966,035	46.6	6,600,172	94.7	365,863	5.3	8,007,536
2014 ²	15,134,484	7,017,985	46.4	6,669,590	95.0	348,395	5.0	8,116,499
2015 ²	15,281,945	7,156,393	46.8	6,772,896	94.6	383,496	5.4	8,125,553
2016 ²	15,448,679	7,325,972	47.4	6,962,973	95.0	362,999	5.0	8,122,707
2016Q1 ²	15,382,201	7,283,212	47.3	6,933,526	95.2	349,686	4.8	8,098,989
2017Q1 ²	15,684,110	7,472,857	47.6	7,119,982	95.3	352,875	4.7	8,211,254

TABLE 2 - HISTORICAL TABLE OF NUMBER AND RATE OF UNEMPLOYMENT BY AGE (ALTERNATIVE ESTIMATES)

YEAR	AGE GROUP											
	TOTAL		15 - 19		20 - 24		25 - 29		30 - 39		40 & ABOVE	
	NO.	RATE	NO.	RATE	NO.	RATE	NO.	RATE	NO.	RATE	NO.	RATE
2009 ¹	471,254	6.9	68,447	27.3	176,801	24.9	100,508	11.9	70,988	4.2	54,511	1.6
2010 ¹	400,335	5.8	59,339	26.5	154,788	22.5	84,777	10.5	59,041	3.6	42,390	1.2
2011 ²	334,854	5.0	42,636	20.9	141,252	20.6	69,319	8.9	53,111	3.3	28,537	0.8
2012 ²	309,703	4.5	43,745	23.5	125,556	19.4	58,227	7.3	48,794	2.8	33,381	1.0
2013 ²	365,863	5.3	50,436	23.8	149,243	22.4	64,566	8.6	55,398	3.2	46,221	1.3
2014 ²	348,395	5.0	49,540	25.7	138,565	22.2	67,235	9.3	53,648	3.0	39,407	1.1
2015 ²	383,496	5.4	55,557	28.6	143,351	22.0	78,592	10.4	60,768	3.4	45,229	1.2
2016 ²	362,999	5.0	58,622	32.8	144,156	22.2	76,624	10.0	47,956	2.7	35,640	0.9
2016Q1 ²	349,686	4.8	61,577	32.6	136,637	21.1	75,071	10.2	44,919	2.5	31,483	0.8
2017Q1 ²	352,875	4.7	52,415	27.4	129,114	19.1	64,751	8.8	58,234	3.3	48,361	1.2

¹- Excluding Northern province² - All the districts are included

Table 3 - Currently Employed persons by Industry group (No. and percentage) (Based on ISIC Fourth Revision) - (Alternative estimates)

Year	Industry group																		
	Total	1	2	3	6	7	8	9	10	11	13	14	15	16	17	19	20	Other	
2013	No.	6,600,172	1,671,216	84,712	1,227,149	515,001	899,928	451,283	146,352	52,763	136,319	58,293	93,101	561,743	279,471	124,054	106,911	151,095	40,778
	%	100.0	25.3	1.3	18.6	7.8	13.6	6.8	2.2	0.8	2.1	0.9	1.4	8.5	4.2	1.9	1.6	2.3	0.6
2014	No.	6,669,590	1,596,116	70,007	1,263,233	530,836	885,220	465,856	159,389	58,863	142,990	44,516	98,294	578,793	293,937	124,437	123,966	181,864	51,273
	%	100.0	23.9	1.0	18.9	8.0	13.3	7.0	2.4	0.9	2.1	0.7	1.5	8.7	4.4	1.9	1.9	2.7	0.8
2015	No.	6,772,896	1,609,226	58,353	1,270,771	523,932	925,132	466,273	176,308	49,686	140,512	60,823	115,388	590,028	300,610	133,581	130,873	167,275	54,126
	%	100.0	23.8	0.9	18.8	7.7	13.7	6.9	2.6	0.7	2.1	0.9	1.7	8.7	4.4	2.0	1.9	2.5	0.8
2016	No.	6,962,973	1,563,142	56,945	1,297,576	591,710	974,467	501,897	175,754	59,445	158,159	51,192	103,576	602,318	317,987	138,767	126,838	196,875	46,324
	%	100.0	22.4	0.8	18.6	8.5	14.0	7.2	2.5	0.9	2.3	0.7	1.5	8.7	4.6	2.0	1.8	2.8	0.7
2016Q1	No.	6,933,526	1,607,618	65,108	1,318,953	548,694	930,479	502,971	176,336	42,889	167,049	62,404	106,998	625,087	313,831	134,273	99,480	190,180	41,174
	%	100.0	23.2	0.9	19.0	7.9	13.4	7.3	2.5	0.6	2.4	0.9	1.5	9.0	4.5	1.9	1.4	2.7	0.6
2017Q1	No.	7,119,982	1,591,080	46,469	1,402,368	651,196	935,447	489,824	159,536	64,378	153,957	58,243	121,688	609,921	362,256	137,373	105,791	186,480	43,975
	%	100.0	22.3	0.7	19.7	9.1	13.1	6.9	2.2	0.9	2.2	0.8	1.7	8.6	5.1	1.9	1.5	2.6	0.6

Note: The tabulation groups based on ISIC (Rev.4) are indicated as A,B,C.....U. Due to the limitations on reliability (based on CV),some of these groups have been combined.

Industry Group

1 Agriculture, forestry and fishing (A)

2 Mining & quarrying (B)

3 Manufacturing (C)

6 Construction, Electricity, gas, steam and air conditioning supply, Water supply, sewerage, waste management and remediation activities (D, E,F)

7 Wholesale and retail trade, repair of motor vehicles and motor cycles(G)

8 Transportation and storage (H)

9 Accommodation and food services activities (I)

10 Information and communication (J)

11 Financial and insurance activities (K)

13 Professional, scientific and technical activities (M)

14 Administrative and support service activities (N)

15 Public administration and defence compulsory social security (O)

16 Education (P)

17 Human health and social work activities (Q)

19 Other service activities (S)

20 Activities of households as employers; undifferentiated goods and services - producing activities of households for own use (T)

Other

Other

12 Real estate activities (L)

18 Arts, entertainment and recreation (R)

21 Activities of extra territorial organizations & bodies (U)