



**QUARTERLY REPORT OF THE
SRI LANKA LABOUR FORCE
SURVEY**

Quarterly Report – 2013

First Quarter

**DEPARTMENT OF CENSUS & STATISTICS
MINISTRY OF FINANCE AND PLANNING**

ISBN 978 – 955 – 577 – 854 – 1

Preface

In the past, information on labour force characteristics, employment and unemployment etc. were collected through labour force and socio - economic surveys conducted at five yearly time intervals. However, the employment and unemployment data are required at very short intervals to monitor the programs made in the employment generating policies of the government. Therefore, to satisfy this need, the Department of Census and Statistics (DCS) designed a labour force survey on a quarterly basis, to measure the levels and trends of employment, unemployment and labour force in Sri Lanka on a continuous basis. This survey was commenced from the first quarter of 1990 and this report is the eighty seventh in the series of quarterly reports published so far.

Current survey concepts and methods are very similar to those introduced at the beginning of the survey in 1990. However, some changes were made over the years to improve the accuracy and usefulness of the data. The significant revisions were made on the labour force survey questionnaire in 1996, 2006 and the latest revision is in 2013. The revised version is introduced for the survey conducted in 2013 first quarter, and this report consists with statistics using new concepts.

The field work of the survey for the first quarter 2013 was done in January, February and March in year 2013. This survey covered the whole country. A nationally representative annual sample of about 25,000 housing units have been selected for the survey in 2013. This report is based on a quarterly sample of 6,250 housing units.

*D.C.A. Gunawardena
Director General of Census & Statistics*

*Department of Census & Statistics,
109, Rotunda Tower,
Galle Road.
Colombo 03.
05.11.2013.*

Acknowledgements

This report is eighty seventh in the series of the Quarterly Labour Force Survey which was commenced from the first quarter 1990 and is being continued by the Department of the Census and statistics.

Planning and execution of the survey was done by staff of the Sample Survey Division under the direction of Mr. W.W.M.A.S. Premakumara, Additional Director General, Sample Surveys Division.

The Field operation activities were organized by Mr. D.C.A.Fernando, Statistician of the Sample Surveys Division. The supervision activities were carried out by Mr. P.A.Subawickrama, Mr. D.C.A.Fernando, Mrs. W.A.C.Wijebandara, Mrs. M.D.D.D.Deepawansa, Mr. H.T.Fonseka, Mr.U.B.Saputhanthiri, Mr. S.M.M. Badudeen, Statisticians & Mr.J.S.N.P.Dharmawardana, Miss.C.Jayawickrama, Senior Statisticians, of the sample surveys division and Heads of statistics divisions in each district.

The computer data processing and final tabulations were done by Mrs. W.A.S.M.P. Gunasekara, Mr.T. Thirugnanatheepan Statistical Officers and Mrs. A.N. Ekanayake and Mr. M.B.M. Shiras, Statistical Assistants of the Sample Surveys Division, under the supervision of Mr. P.A. Subawickrama, Statistician using Microcomputers. The statistical officers, statistical assistants, Information and Communication Technology assistants, Data Entry Officer/Coding clerks and development officers (iii), of the sample survey division are acknowledged for their valuable contribution during the whole survey process.

Developing of sample selection programme and its related computer software was done by Mr. K.M.R. Wickramasinghe, AD(ICT) of the sample survey division. MR. J.S.N.P.Dharmawardana, Senior Statistician, Sample Surveys Division prepared the Quarterly Bulletin of the survey.

This publication was organized and prepared by Mrs. W.A.C. Wijebandara, Statistician, Sample Surveys Division, assisted by Mrs. W.A.S.M.P. Gunasekara, Statistical officer.

The Information & Communication Technology Division, under the direction of Mr. S.A.S. Bandulasena, Director (Data Processing) and under the supervision of Mr. P.M.R.Fernando, Deputy Director (ICT) and Mr. W.H.P.N. Weerasiri, Sri Lanka Information and Communication Technology Service I/II , was responsible for the survey data entry and preparation of data entry and computer edits programmes. Data entry was decentralized and manual editing, coding & data entry were done by responsible officers at district office kachcheries in all districts.

District field staff of the Department who worked on the survey deserves a special word of thanks. They include District Deputy Directors/ Senior Statisticians/ Statisticians for supervision and field Statistical Officers, who worked hard at the data collection stage, to make this survey a success. Printing of the report was done at the staff of Printing Division, under the supervision of Mr. W.C. Weerawansa, Senior Statistician.

Finally, I wish to express my appreciation to all the respondents of the survey for their valuable cooperation.

Sri Lanka Labour Force Survey
Summary Statistics on Labour Force Characteristics
2013 1st Quarter
(All Island)

15 years & over population

	Total	Male	Female	Urban	Rural
Population (15 years & over)	16,356,181	7,571,662	8,784,520	2,925,002	13,431,179
Labour force in this age group	8,861,919	5,683,067	3,178,852	1,399,832	7,462,087
Labour force participation rate	54.2	75.1	36.2	47.9	55.6
Employed population	8,451,187	5,494,375	2,956,812	1,330,707	7,120,480
Employment rate	95.4	96.7	93.0	95.1	95.4
Unemployed population	410,733	188,693	222,040	69,126	341,607
Unemployment rate	4.6	3.3	7.0	4.9	4.6
Not in labour force	7,494,262	1,888,595	5,605,667	1,525,170	5,969,092

20 years & over population

	Total	Male	Female	Urban	Rural
Population (20 years & over)	14,670,323	6,730,495	7,939,828	2,620,310	12,050,013
Labour force in this age group	8,572,526	5,485,564	3,086,962	1,365,022	7,207,504
Labour force participation rate	58.4	81.5	38.9	52.1	59.8
Employed population	8,214,820	5,322,540	2,892,280	1,303,087	6,911,733
Employment rate	95.8	97.0	93.7	95.5	95.9
Unemployed population	357,706	163,024	194,682	61,935	295,771
Unemployment rate	4.2	3.0	6.3	4.5	4.1
Not in labour force	6,097,797	1,244,931	4,852,866	1,255,288	4,842,509

Selected Labour Force Indicators ...

Indicator	Year							
	2008*	2009*	2010*	2011*	2012*	2011**	2012**	2013Q1**
Labour force participation rate								
By Gender								
Total	55.1	54.1	53.4	53.4	53.0	53.0	52.6	54.2
Male	76.1	74.7	75.0	74.2	75.2	74.0	75.0	75.1
Female	36.6	36.2	34.4	35.0	33.5	34.4	32.9	36.2
By residential sector								
Total	55.1	54.1	53.4	53.4	53.0	53.0	52.6	54.2
Urban	50.8	48.4	46.8	48.5	48.7	47.8	48.4	47.9
Rural	55.7	54.9	54.4	54.2	53.9	53.8	53.5	55.6
Unemployment Rate								
By Gender								
Total	5.4	5.9	4.9	4.2	3.9	4.2	4.0	4.6
Male	3.7	4.3	3.5	2.7	2.9	2.7	2.8	3.3
Female	8.4	8.6	7.7	6.8	6.0	7.0	6.2	7.0
By selected age Group (Year)								
20 – 29	13.7	15.4	13.8	12.4	11.1	12.3	11.3	13.6
20 – 24	18.1	21.4	19.1	18.0	16.7	17.7	16.8	20.7
25 – 29	9.5	10.3	9.2	7.5	6.5	7.6	6.6	7.5
By selected educational level								
GCE A/L and above								
Total	10.5	11.2	11.6	9.0	7.3	9.0	7.5	9.2
Male	6.0	7.0	7.8	5.4	4.3	5.4	4.5	6.1
Female	15.3	15.5	15.8	13.1	10.5	13.1	10.8	12.5
Employed population								
By Gender								
Total	7,628,683	7,579,835	7,696,142	7,883,817	7,791,831	8,186,305	8,118,362	8,451,187
Male	5,018,954	4,949,825	5,125,763	5,219,712	5,224,743	5,452,723	5,469,759	5,494,375
Female	2,609,729	2,630,010	2,570,379	2,664,105	2,567,089	2,733,582	2,648,603	2,956,812
By industry (Percentage)								
Total	7,628,683	7,579,835	7,696,142	7,883,817	7,791,831	8,186,305	8,118,362	8,451,187
%	100.0	100.0	100.0	100.0	100.0	100.0	100.0	100.0
Agriculture	2,474,446	2,459,824	2,512,546	2,593,048	2,412,066	2,699,244	2,513,673	2,384,795
%	32.4	32.5	32.6	32.9	31.0	33.0	31.0	28.2
Industry	2,002,805	1,904,722	1,864,538	1,914,671	2,042,262	1,976,711	2,117,286	2,273,387
%	26.3	25.1	24.2	24.3	26.2	24.1	26.1	26.9
Services	3,151,432	3,215,289	3,319,059	3,376,099	3,337,503	3,510,350	3,487,403	3,793,005
%	41.3	42.4	43.1	42.8	42.8	42.9	43.0	44.9
By no. of hours worked per week (percentage)								
Total	100.0	100.0	100.0	100.0	100.0	100.0	100.0	100.0
0 [#]	7.2	7.9	6.0	5.3	4.6	5.2	4.5	3.1
1 – 9	2.1	2.2	1.7	1.8	1.2	1.7	1.2	1.8
10 – 39	28.9	28.8	28.4	29.7	25.6	29.9	26.0	27.2
40 & above	61.8	61.2	63.9	63.2	68.6	63.1	68.3	67.9

has a job but not at work during the reference week

** Excluding Northern Province*

***Whole island covered*

CONTENTS

Page No.

WORKING AGE POPULATION
EMPLOYED POPULATION
UNEMPLOYED POPULATION

1
2
3

TABLES

Table No.

1.	Historical table of Labour Force Status (current) of the Household Population, 10 years of Age and over - Both Sexes	4
1A.	Historical table of Labour Force Status (current) of the Household Population, 10 years of Age and over – Male	5
1B.	Historical table of Labour Force Status (current) of the Household Population, 10 years of Age and over – Female	5
2.	Labour Force Status (current) of the Household Population 10 years of Age and over, by Age - Both Sexes	6
2A.	Labour Force Status (current) of the Household Population 10 years of Age and over, by Age – Male	7
2B.	Labour Force Status (current) of the Household Population 10 years of Age and over, by Age – Female	7
3.	Historical table of Currently Employed persons by Age Groups (percentage) - Both Sexes	8
3A.	Historical table of Currently Employed persons by Age Groups (percentage) – Male	8
3B.	Historical table of Currently Employed persons by Age Groups (percentage) – Female	8
4.	Historical table of Currently Employed persons by Level of Education (percentage) - Both Sexes	9
4A.	Historical table of Currently Employed persons by Level of Education (percentage) – Male	9
4B.	Historical table of Currently Employed persons by Level of Education (percentage) – Female	9
5.	Historical table of Currently Employed persons by Employment Status (percentage) - Both Sexes	10
5A.	Historical table of Currently Employed persons by Employment Status (percentage) – Male	10
5B.	Historical table of Currently Employed persons by Employment Status (percentage) – Female	10
6.	Currently employed persons by Industry group (Based on ISIC Rev.4) – Both sexes	11
6A.	Currently employed persons by Industry group (Based on ISIC Rev.4) – Male	11
6B.	Currently employed persons by Industry group (Based on ISIC Rev.4) – Female	11
6C.	Historical table of currently employed population by major industry group - Both sexes	12
6D.	Historical table of currently employed population by major industry group (percentage) - Both sexes	12
7.	Currently employed persons by Occupation group (Based on ISCO 08) - Both sexes	13
7A.	Currently employed persons by Occupation group (Based on ISCO 08) – Male	13
7B.	Currently employed persons by Occupation group (Based on ISCO 08) – Female	13
8.	Currently Employed persons by hours per week actually worked at the main job and Major Industrial group (percentage) - Both Sexes	14
9.	Historical table of Currently Unemployed persons by Age Groups (percentage) - Both Sexes	15
9A.	Historical table of Currently Unemployed persons by Age Groups (percentage) – Male	15
9B.	Historical table of Currently Unemployed persons by Age Groups (percentage) – Female	15
10.	Historical table of Currently Unemployed persons by Level of Education (percentage) - Both Sexes	16
10A.	Historical table of Currently Unemployed persons by Level of Education (percentage) – Male	16
10B.	Historical table of Currently Unemployed persons by Level of Education (percentage) – Female	16
11.	Currently Unemployed Persons by Sex and Duration of Unemployment	17
12.	Standard error and coefficient of variation of selected variables	18

Appendix 1: Explanatory Notes

Appendix 2: Alternative estimates of employment, unemployment and labour force characteristics

Appendix 3: Survey schedule

Introduction

Labour Force ...

(Economically Active Population)

Labour force participation rate (LFPR) ...

Number of persons (age 15 & above) who were employed or unemployed during the reference week

Sri Lanka Labour Force Survey (LFS) is designed to measure the levels and trends of employment, unemployment and labour force in Sri Lanka. LFS is being conducted quarterly, since the first quarter of 1990.

The field work of the survey for the first quarter of 2013 was done in January, February and March covering the whole island

For the first time of LFS history,

- Considered age group was 15 years and above for the working age population
- Introduced new occupation and industry classifications (SLSCO 2008 and SLSIC Rev.4)

Labour Force ...

(Economically Active Population)

Table 1 : Economically active population by gender - First quarter 2013

Sector	Economically active population					
	Total	%	Male	%	Female	%
Sri Lanka	8,861,919	100.0	5,683,067	64.1	3,178,852	35.9
Urban	1,399,832	100.0	962,828	68.8	437,004	31.2
Rural	7,096,526	100.0	4,512,589	63.6	2,583,936	36.4
Estate	365,561	100.0	207,649	56.8	157,912	43.2

Table 2 : Economically inactive population by gender - First quarter 2013

Sector	Economically inactive population					
	Total	%	Male	%	Female	%
Sri Lanka	7,494,262	100.0	1,888,595	25.2	5,605,667	74.8
Urban	1,525,170	100.0	413,719	27.1	1,111,451	72.9
Rural	5,723,157	100.0	1,394,254	24.4	4,328,902	75.6
Estate	245,936	100.0	80,621	32.8	165,314	67.2

Table 3 : LFPR by gender and year (Excluding Northern province.)

Year	Total	Male	Female
2008	55.1	76.1	36.6
2009	54.1	74.7	36.2
2010	53.4	75.0	34.4
2011	53.4	74.2	35.0
2012	53.0	75.2	33.5
2013 Q1	54.6	75.0	37.0

Referring the table 3, It is important to note that, male participation to the labour force was almost twice as that of females.

Table 3 provides the information on LFPRs since year

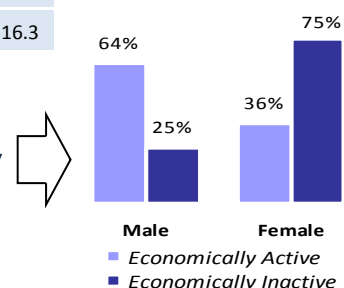
According to the table 1, the estimated economically active population was about 8.86 million in the first Quarter 2013. Of which 64.1 percent were males and 35.9 percent were females. Out of the economically inactive population 25.2 percent were males and 74.8 percent were females (Table 2) .

Table4 : LFPR by age group and gender -First quarter 2013

Age group	Total	Male	Fe-
Sri Lanka	54.2	75.1	36.2
15 - 19	17.2	23.5	10.9
20 - 24	56.1	74.7	40.6
25 - 29	66.1	93.5	43.2
30 - 34	66.9	95.2	42.8
35 - 39	70.4	97.3	46.9
40 - 44	73.4	96.5	53.5
45 - 49	69.9	94.4	49.8
50 - 54	67.5	92.2	46.0
55 - 59	59.9	82.4	38.8
60+	29.7	46.2	16.3

Considering the table 4, the distribution of LFPR by age group and by gender depicts more male participation compared to female in all age groups. Highest rate for male was reported from age group 35-39 years, while that of females was reported from the age group of 40 - 44 years.

Figure 1 : Distribution of Economically



Employed ...

During the reference period, persons, who worked as paid employees, employers, own account workers (self employed), or contributing family workers are said to be employed.

This includes persons with a job but not at work during the reference period

Reference Period : Previous week of the survey week

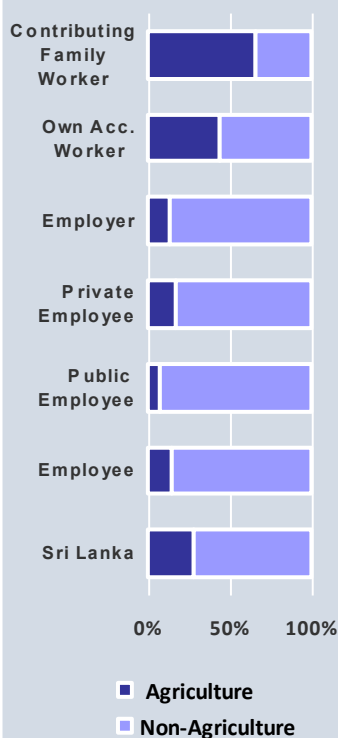


Figure 2: Distribution of Economically active/Inactive population-

Figure 2 shows that, comparatively higher percentage of employees both in private & public sector engage in non-agricultural activities.

Employment ...

Quarter	Sri Lanka	Major Industry Group		
		Agriculture	Industries	Services
April-May-June	7,930,276	2,404,878	2,134,556	3,390,842
2012 Q2	100.0	30.3	26.9	42.8
July-Aug-Sept.	8,059,734	2,518,089	2,077,029	3,464,615
2012 Q3	100.0	31.2	25.8	43
Oct-Nov-Dec	8,365,075	2,730,254	2,194,865	3,439,957
2012 Q4	100.0	32.6	26.2	41.1
Jan-Feb-Mar	8,451,187	2,384,795	2,273,387	3,793,005
2013Q1	100.0	28.2	26.9	44.9

Table 5: Distribution of Employed population by main industry (Second quarter 2012 – First quarter 2013)

Table 5 shows the percentage distribution of employed population by main industry from second quarter 2012 to first quarter 2013. The total number of employed persons in Sri Lanka was estimated as about 8.5 million in first quarter 2013. Of which, about 44.9 percent engaged in services sector, 28.2 percent in agriculture sector, and 26.9 percent in Industries sector.

Employment Status	Sri Lanka		Sector			
			Agriculture		Non-Agriculture	
	No.	%	No.	%	No.	%
Sri Lanka	8,451,187	100.0	2,384,795	28.2	6,066,392	71.8
Employee	4,749,815	100.0	689,346	14.5	4,060,470	85.5
Public	1,308,136	100.0	90,000	6.9	1,218,136	93.1
Private	3,441,679	100.0	599,345	17.4	2,842,334	82.6
Employer	268,847	100.0	25,463	9.5	243,384	90.5
Own Account Worker	2,637,198	100.0	1,143,087	43.3	1,494,111	56.7
Contributing Family Worker	795,327	100.0	526,899	66.2	268,428	33.8

Table 6: Percentage distribution of employed population by employment status and Agriculture/Non-Agriculture sector – First Quarter 2013

Table 7 depicts the percentage distribution of male and female employed population by main industries. Regardless of the gender, highest employment concentrated in service sector. Further among employed women about 31.8 percent was in agriculture sector while this share was 26.3 percent among males.

Major Industry Group	Sri Lanka	Gender	
		Male	Female
Sri Lanka	100.0	100.0	100.0
Agriculture	28.2	26.3	31.8
Industry	26.9	27.7	25.5
Services	44.9	46.1	42.7

Table 7: Distribution of Employed population by main industry & sex – First quarter 2013

Agriculture
1. Agriculture Forestry and Fishery (A)

Industries
1. Mining & Quarrying (B)
2. Manufacturing (C)
3. Construction, Electricity, gas, steam and air conditioning supply, Water supply, sewerage, waste management and remediation activities (D, E, F)

Services
1. Wholesale and retail trade, repair of motor vehicles and motor cycles (G)
2. Transportation and storage (H)
3. Accommodation and food services activities (I)
4. Information and communication (J)
5. Financial and insurance activities (K)
6. Professional, scientific and technical activities (M)
7. Administrative and support service activities (N)
8. Public administration and defence compulsory social security (O)
9. Education (P)
10. Human health and social work activities (Q)
11. Other service activities (S)
12. Activities of households as employers; undifferentiated goods and services - producing activities of households for own use (U)
13. Real estate activities (L) Arts, entertainment and recreation (R) Activities of extra territorial organizations & bodies (U)

According to the table 6, more employers were in non-agriculture sector than in agriculture sector. But contributing family workers were highly concentrated in agriculture sector.

Unemployment ...

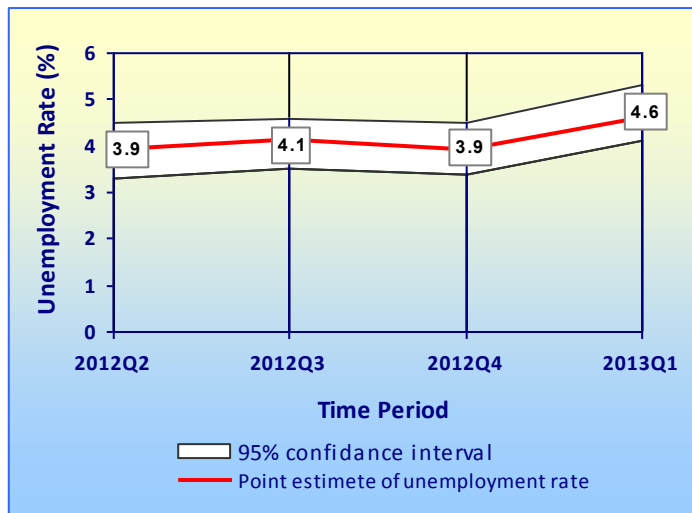


Figure 3 : Unemployment rates and its 95% confidence intervals (2012 Q2 - 2013 Q1)

¹**Sampling error** : When a sample, rather than the entire population, is surveyed, estimates differ from the true population values they represent. This difference, or sampling error, occurs by chance, and its variability is measured by the standard error of the estimate.

For more details, please refer the explanatory note on the labour force link in the DCS website.

Age group (Years)	Sri Lanka	Gender	
		Male	Female
Sri Lanka	4.6	3.3	7.0
15—24	20.1	16.4	26.3
25—29	7.5	5.0	12.0
Over 30	1.7	1.0	2.9

Table 8: Unemployment rate by age group and gender— First quarter 2013

Further the survey results revealed that the unemployment was severe among females than that of males, in all age groups.

The highest unemployment rate was reported from the G.C.E(A/L) and above group which was about 9.2 percent. These were 6.1 percent and 12.5 percent for males and females respectively.

Level of Education	Unemployment Rate (%)		
	Sri Lanka	Male	Female
Sri Lanka	4.6	3.3	7.0
Below GCE O/L	2.9	2.2	4.4
GCE O/L	6.0	5.4	7.0
GCE A/L & above	9.2	6.1	12.5

Table 9: Unemployment rate by level of education— First quarter 2013

This shows that the problem of unemployment is more acute in the case of educated females than educated males .

Unemployed ...

Persons available and/or looking for work, and who did not work and taken steps to find a job during last four weeks and ready to accept a job given a work opportunity within next two weeks are said to be unemployed.

Unemployment Rate ...

The number of unemployed persons as a percentage of the labour force.

The number of unemployed persons was estimated as about 410,733 during the First quarter 2013. The unemployment rate for the First quarter 2013 was reported as 4.6 percent.

According to the figure 3, it is very important to note that, when sampling error¹ was considered there were no statistically significant drops of unemployment rates reported in different time periods starting from second quarter 2012 to first quarter 2013.

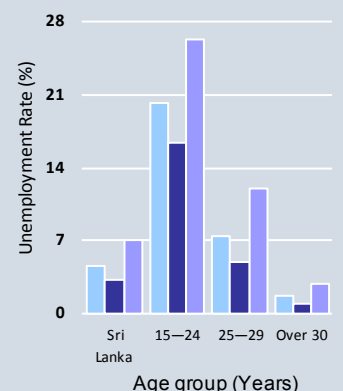


Figure 3: Unemployment rate by age group - First quarter 2013

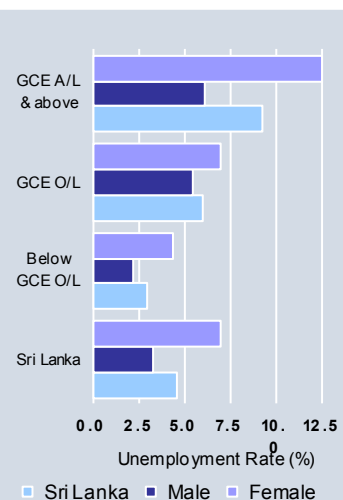


Figure 4: Unemployment rate by level of education - First quarter 2013

**TABLE 1 - HISTORICAL TABLE OF LABOUR FORCE STATUS (CURRENT) OF THE HOUSEHOLD POPULATION,
15 YEARS OF AGE AND OVER - BOTH SEXES**

NATIONAL LEVEL DATA								
YEAR	HOUSEHOLD			LABOUR FORCE				NOT IN
	POPULATION	TOTAL	LABOUR	EMPLOYED		UNEMPLOYED		LABOUR
	(15 YEARS	LABOUR	FORCE	NUMBER	RATE	NUMBER	RATE	FORCE
	& OVER)	FORCE	PARTICI:	(% TO TOTAL		(% TO TOTAL		NUMBER
			RATE(%)	LABOUR FORCE)	LABOUR FORCE)			
2006 ¹	13,261,409	7,576,415	57.1	7,084,346	93.5	492,069	6.5	5,684,994
2007 ¹	13,459,252	7,472,932	55.5	7,026,733	94.0	446,199	6.0	5,986,320
2008 ²	14,626,833	8,061,725	55.1	7,628,683	94.6	433,042	5.4	6,565,107
2009 ²	14,876,264	8,051,089	54.1	7,579,835	94.1	471,254	5.9	6,825,175
2010 ²	15,166,285	8,096,477	53.4	7,696,142	95.1	400,335	4.9	7,069,808
2011 ³	16,122,111	8,543,776	53.0	8,186,305	95.8	357,471	4.2	7,578,335
2012 ³	16,081,285	8,454,364	52.6	8,118,362	96.0	336,002	4.0	7,626,921
2013Q1 ³	16,356,181	8,861,919	54.2	8,451,187	95.4	410,733	4.6	7,494,262

¹ - Excluding Northern & Eastern provinces

³ - All the districts are included

² - Including Eastern province but Excluding Northern province

**TABLE 1A - HISTORICAL TABLE OF LABOUR FORCE STATUS (CURRENT) OF THE HOUSEHOLD POPULATION,
15 YEARS OF AGE AND OVER - MALE**

YEAR	HOUSEHOLD	LABOUR FORCE						NOT IN LABOUR FORCE NUMBER
	POPULATION	TOTAL	LABOUR	EMPLOYED		UNEMPLOYED		
	(15 YEARS	LABOUR	FORCE	NUMBER	RATE	NUMBER	RATE	
	& OVER)	FORCE	PARTICI:	(% TO TOTAL		(% TO TOTAL		
			RATE(%)	LABOUR FORCE)	LABOUR FORCE)			
2006 ¹	6,287,747	4,822,204	76.7	4,596,634	95.3	225,570	4.7	1,465,543
2007 ¹	6,372,572	4,853,559	76.2	4,643,931	95.7	209,627	4.3	1,519,013
2008 ²	6,848,600	5,212,933	76.1	5,018,954	96.3	193,978	3.7	1,635,668
2009 ²	6,925,821	5,173,106	74.7	4,949,825	95.7	223,281	4.3	1,752,715
2010 ²	7,078,246	5,310,872	75.0	5,125,763	96.5	185,108	3.5	1,767,374
2011 ³	7,570,144	5,605,446	74.0	5,452,723	97.3	152,723	2.7	1,964,698
2012 ³	7,508,356	5,629,617	75.0	5,469,759	97.2	159,858	2.8	1,878,740
2013Q1 ³	7,571,662	5,683,067	75.1	5,494,375	96.7	188,693	3.3	1,888,595

**TABLE 1B - HISTORICAL TABLE OF LABOUR FORCE STATUS (CURRENT) OF THE HOUSEHOLD POPULATION,
15 YEARS OF AGE AND OVER - FEMALE**

YEAR	HOUSEHOLD	LABOUR FORCE						NOT IN LABOUR FORCE NUMBER
	POPULATION	TOTAL	LABOUR	EMPLOYED		UNEMPLOYED		
	(15 YEARS	LABOUR	FORCE	NUMBER	RATE	NUMBER	RATE	
	& OVER)	FORCE	PARTICI:	(% TO TOTAL		(% TO TOTAL		
			RATE(%)	LABOUR FORCE)	LABOUR FORCE)			
2006 ¹	6,973,662	2,754,211	39.5	2,487,711	90.3	266,499	9.7	4,219,451
2007 ¹	7,086,680	2,619,373	37.0	2,382,801	91.0	236,572	9.0	4,467,307
2008 ²	7,778,232	2,848,793	36.6	2,609,729	91.6	239,064	8.4	4,929,440
2009 ²	7,950,443	2,877,983	36.2	2,630,010	91.4	247,973	8.6	5,072,460
2010 ²	8,088,039	2,785,605	34.4	2,570,379	92.3	215,226	7.7	5,302,434
2011 ³	8,551,967	2,938,329	34.4	2,733,582	93.0	204,748	7.0	5,613,637
2012 ³	8,572,929	2,824,747	32.9	2,648,603	93.8	176,144	6.2	5,748,181
2013Q1 ³	8,784,520	3,178,852	36.2	2,956,812	93.0	222,040	7.0	5,605,667

¹ - Excluding Northern & Eastern provinces

³ - All the districts are included

² - Including Eastern province but Excluding Northern province

TABLE 2 - LABOUR FORCE STATUS (CURRENT) OF THE HOUSEHOLD POPULATION 10 YEARS OF AGE AND OVER BY AGE - BOTH SEXES
(2013 1st Quarter)

AGE	HOUSEHOLD		LABOUR FORCE				UNEMPLOYED		NOT IN LABOUR FORCE	
	POP: (15 YEARS & OVER)	TOTAL LABOUR FORCE	LABOUR FORCE PARTICI: RATE(%)	EMPLOYED NUMBER	EMPLOYED RATE (% TO TOTAL LABOUR FORCE)	UNEMPLOYED NUMBER	UNEMPLOYED RATE (% TO TOTAL LABOUR FORCE)	LABOUR FORCE NUMBER	LABOUR FORCE NUMBER	
ALL AGES	16,356,181	8,861,919	54.2	8,451,187	95.4	410,733	4.6	7,494,262		
15 - 19 YRS	1,685,858	289,393	17.2	236,367	81.7	53,027	18.3	1,396,465		
20 - 24 YRS	1,485,568	833,899	56.1	661,350	79.3	172,550	20.7	651,668		
25 - 29 YRS	1,463,431	967,793	66.1	894,969	92.5	72,824	7.5	495,638		
30 - 39 YRS	3,128,349	2,143,364	68.5	2,086,195	97.3	57,169	2.7	984,985		
40 + YRS	8,592,975	4,627,469	53.9	4,572,306	98.8	55,164	1.2	3,965,506		

TABLE 2A - LABOUR FORCE STATUS (CURRENT) OF THE HOUSEHOLD POPULATION 10 YEARS OF AGE AND OVER, BY AGE - MALE
(2013 1st Quarter)

AGE	HOUSEHOLD				LABOUR FORCE				NOT IN LABOUR FORCE NUMBER
	POP: (10 YEARS & OVER)	TOTAL LABOUR FORCE	LABOUR FORCE PARTICI: RATE(%)	EMPLOYED NUMBER	EMPLOYED RATE (% TO TOTAL LABOUR FORCE)	UNEMPLOYED NUMBER	UNEMPLOYED RATE (% TO TOTAL LABOUR FORCE)		
								7,571,662	
ALL AGES									1,888,595
15 - 19 YRS	841,166	197,503	23.5	171,835	87.0	25,668	13.0		643,664
20 - 24 YRS	677,381	506,070	74.7	416,421	82.3	89,649	17.7		171,311
25 - 29 YRS	667,244	623,809	93.5	592,432	95.0	31,377	5.0		43,435
30 - 39 YRS	1,446,774	1,391,793	96.2	1,371,753	98.6	20,040	1.4		54,981
40 + YRS	3,939,097	2,963,892	75.2	2,941,934	99.3	21,958	0.7		975,205

TABLE 2B - LABOUR FORCE STATUS (CURRENT) OF THE HOUSEHOLD POPULATION 10 YEARS OF AGE AND OVER, BY AGE - FEMALE
(2013 1st Quarter)

AGE	HOUSEHOLD				LABOUR FORCE				NOT IN LABOUR FORCE NUMBER
	POP: (10 YEARS & OVER)	TOTAL LABOUR FORCE	LABOUR FORCE PARTICI: RATE(%)	EMPLOYED NUMBER	EMPLOYED RATE (% TO TOTAL LABOUR FORCE)	UNEMPLOYED NUMBER	UNEMPLOYED RATE (% TO TOTAL LABOUR FORCE)		
								8,784,520	
ALL AGES									5,605,667
15 - 19 YRS	844,692	91,891	10.9	64,532	70.2	27,359	29.8		752,801
20 - 24 YRS	808,187	327,829	40.6	244,929	74.7	82,900	25.3		480,358
25 - 29 YRS	796,187	343,984	43.2	302,537	88.0	41,447	12.0		452,203
30 - 39 YRS	1,681,575	751,571	44.7	714,442	95.1	37,129	4.9		930,004
40 + YRS	4,653,878	1,663,577	35.7	1,630,371	98.0	33,206	2.0		2,990,301

* Reliable estimates cannot be provided due to small cell sizes.

These figures are to be treated with caution as the corresponding CV (Coefficient of variation) values are high.

**TABLE 3 - HISTORICAL TABLE OF CURRENTLY EMPLOYED PERSONS BY AGE GROUPS
(PERCENTAGE) - BOTH SEXES**

Year	All Ages	Age Groups				
		15 - 19 YRS	20 - 24 YRS	25 - 29 YRS	30 - 39 YRS	40+ YRS
2006 ¹	100.0	4.1	10.3	12.1	24.3	49.3
2007 ¹	100.0	3.6	9.8	12.1	24.0	50.6
2008 ²	100.0	3.4	9.9	11.7	24.0	51.0
2009 ²	100.0	3.4	8.6	11.5	24.4	52.1
2010 ²	100.0	3.0	8.5	10.9	24.0	53.5
2011 ³	100.0	3.1	8.6	11.0	24.3	53.0
2012 ³	100.0	2.5	8.3	11.0	25.2	53.0
2013Q1 3	100.0	2.8	7.8	10.6	24.7	54.1

**TABLE 3A - HISTORICAL TABLE OF CURRENTLY EMPLOYED PERSONS BY AGE GROUPS
(PERCENTAGE) - MALE**

Year	All Ages	Age Groups				
		15 - 19 YRS	20 - 24 YRS	25 - 29 YRS	30 - 39 YRS	40+ YRS
2006 ¹	100.0	4.0	10.2	12.3	24.0	49.5
2007 ¹	100.0	3.7	9.6	12.7	23.8	50.2
2008 ²	100.0	3.6	9.7	11.9	24.1	50.7
2009 ²	100.0	3.5	8.4	11.8	24.3	52.0
2010 ²	100.0	3.1	8.2	11.3	24.1	53.3
2011 ³	100.0	3.2	8.6	11.3	24.3	52.5
2012 ³	100.0	2.7	8.3	11.2	25.2	52.6
2013Q1 3	100.0	3.1	7.6	10.8	25.0	53.5

**TABLE 3B - HISTORICAL TABLE OF CURRENTLY EMPLOYED PERSONS BY AGE GROUPS
(PERCENTAGE) - FEMALE**

Year	All Ages	Age Groups				
		15 - 19 YRS	20 - 24 YRS	25 - 29 YRS	30 - 39 YRS	40+ YRS
2006 ¹	100.0	4.1	10.3	11.7	24.9	49.0
2007 ¹	100.0	3.4	10.1	10.8	24.3	51.4
2008 ²	100.0	3.2	10.2	11.2	24.0	51.5
2009 ²	100.0	3.3	8.9	11.0	24.6	52.2
2010 ²	100.0	2.9	9.2	10.0	23.9	54.0
2011 ³	100.0	2.8	8.5	10.3	24.4	54.0
2012 ³	100.0	2.2	8.5	10.5	25.1	53.7
2013Q1 3	100.0	2.2	8.3	10.2	24.2	55.1

¹ - Excluding Northern & Eastern provinces

³ - All the districts are included

² - Including Eastern province but Excluding Northern province

**TABLE 4 - HISTORICAL TABLE OF CURRENTLY EMPLOYED PERSONS BY LEVEL OF EDUCATION
(PERCENTAGE) - BOTH SEXES**

Year	Total	Level of education			
		Grade 5 & Below	Grades 6 - 10	GCE (O.L)/ NCGE	GCE (A.L)/ HNCE & above
2006 ¹	100.0	22.2	46.8	16.8	14.3
2007 ¹	100.0	21.1	47.8	15.6	15.5
2008 ²	100.0	20.8	47.4	15.8	15.9
2009 ²	100.0	21.1	47.2	15.5	16.2
2010 ²	100.0	20.2	48.2	15.9	15.8
2011 ³	100.0	18.8	48.1	15.7	17.4
2012 ³	100.0	18.5	47.2	17.6	16.7
2013Q1 ³	100.0	18.1	47.0	15.9	19.0

**TABLE 4A - HISTORICAL TABLE OF CURRENTLY EMPLOYED PERSONS BY LEVEL OF EDUCATION
(PERCENTAGE) - MALE**

Year	Total	Level of education			
		Grade 5 & Below	Grades 6 - 10	GCE (O.L)/ NCGE	GCE (A.L)/ HNCE & above
2006 ¹	100.0	21.0	50.3	16.6	12.1
2007 ¹	100.0	20.1	51.2	15.6	13.0
2008 ²	100.0	20.1	50.6	16.1	13.2
2009 ²	100.0	20.3	50.7	15.7	13.3
2010 ²	100.0	19.1	51.6	16.2	13.1
2011 ³	100.0	18.3	51.0	16.1	14.6
2012 ³	100.0	17.9	51.1	17.8	13.2
2013Q1 ³	100.0	17.8	51.1	15.5	15.6

**TABLE 4B - HISTORICAL TABLE OF CURRENTLY EMPLOYED PERSONS BY LEVEL OF EDUCATION
(PERCENTAGE) - FEMALE**

Year	Total	Level of education			
		Grade 5 & Below	Grades 6 - 10	GCE (O.L)/ NCGE	GCE (A.L)/ HNCE & above
2006 ¹	100.0	24.4	40.3	17.1	18.3
2007 ¹	100.0	23.0	41.0	15.5	20.5
2008 ²	100.0	22.2	41.3	15.3	21.2
2009 ²	100.0	22.5	40.6	15.3	21.7
2010 ²	100.0	22.3	41.3	15.3	21.1
2011 ³	100.0	19.8	42.2	15.0	23.1
2012 ³	100.0	19.8	39.2	17.2	23.8
2013Q1 ³	100.0	18.7	39.2	16.8	25.3

¹ - Excluding Northern & Eastern provinces

³ - All the districts are included

² - Including Eastern province but Excluding Northern province

**TABLE 5 - HISTORICAL TABLE OF CURRENTLY EMPLOYED PERSONS BY EMPLOYMENT STATUS
(PERCENTAGE) - BOTH SEXES**

YEAR	TOTAL EMPLOYED	EMPLOYEE			EMPLOYER	OWN ACCOUNT WORKER	UNPAID FAMILY WORKER
		TOTAL	PUBLIC	PRIVATE			
2006 ¹	100.0	55.7	13.5	42.2	3.1	30.9	10.3
2007 ¹	100.0	56.6	13.8	42.8	2.9	30.4	10.1
2008 ²	100.0	56.5	15.3	41.3	2.9	30.3	10.3
2009 ²	100.0	57.7	15.5	42.2	2.6	29.2	10.4
2010 ²	100.0	55.5	14.3	41.3	2.6	31.5	10.3
2011 ³	100.0	55.0	14.4	40.5	2.9	31.5	10.7
2012 ³	100.0	56.5	15.2	41.3	2.8	31.9	8.8
2013Q1 ³	100.0	56.2	15.5	40.7	3.2	31.2	9.4

**TABLE 5A - HISTORICAL TABLE OF CURRENTLY EMPLOYED PERSONS BY EMPLOYMENT STATUS
(PERCENTAGE) - MALE**

YEAR	TOTAL EMPLOYED	EMPLOYEE			EMPLOYER	OWN ACCOUNT WORKER	UNPAID FAMILY WORKER
		TOTAL	PUBLIC	PRIVATE			
2006 ¹	100.0	56.1	12.3	43.8	4.4	35.3	4.2
2007 ¹	100.0	57.3	12.1	45.2	4.0	34.5	4.3
2008 ²	100.0	57.6	13.7	43.9	4.1	34.2	4.1
2009 ²	100.0	59.2	13.7	45.5	3.6	33.0	4.3
2010 ²	100.0	56.2	12.8	43.4	3.5	36.0	4.3
2011 ³	100.0	55.8	12.7	43.1	3.8	36.0	4.3
2012 ³	100.0	56.6	12.8	43.8	3.8	35.9	3.6
2013Q1 ³	100.0	57.9	13.7	44.2	4.4	34.7	3.0

**TABLE 5B - HISTORICAL TABLE OF CURRENTLY EMPLOYED PERSONS BY EMPLOYMENT STATUS
(PERCENTAGE) - FEMALE**

YEAR	TOTAL EMPLOYED	EMPLOYEE			EMPLOYER	OWN ACCOUNT WORKER	UNPAID FAMILY WORKER
		TOTAL	PUBLIC	PRIVATE			
2006 ¹	100.0	54.9	15.7	39.2	0.8	22.8	21.5
2007 ¹	100.0	55.2	17.1	38.1	0.7	22.5	21.6
2008 ²	100.0	54.4	18.2	36.2	0.7	22.8	22.1
2009 ²	100.0	55.0	19.0	36.0	0.9	22.1	22.0
2010 ²	100.0	54.3	17.3	37.0	0.8	22.6	22.3
2011 ³	100.0	53.2	17.8	35.4	0.9	22.7	23.2
2012 ³	100.0	56.1	19.9	36.2	0.9	23.6	19.4
2013Q1 ³	100.0	53.1	18.9	34.2	0.9	24.7	21.3

¹ - Excluding Northern & Eastern provinces

³ - All the districts are included

² - Including Eastern province but Excluding Northern province

Table 6 - Currently Employed person by Industry group (Based on ISIC Fourth Revision) - both sexes

Year	Industry Group																			
	1	2	3	6	7	8	9	10	11	13	14	15	16	17	19	20	Other			
2013Q1	8451187	2384795	91095	1562593	619699	1179540	538086	172303	60176	171119	78545	113199	680605	304780	135555	135519	181797	41783		

Table 6A - Currently Employed person by Industry group (Based on ISIC Fourth Revision) - Male

Year	Industry Group																			
	1	2	3	6	7	8	9	10	11	13	14	15	16	17	19	20	Other			
2013Q1	5494375	1443103	85549	832273	602776	815614	510089	125664	48189	94623	48198	81373	440604	97611	52826	86219	94956	34708		

Table 6B - Currently Employed person by Industry group (Based on ISIC Fourth Revision) - Female

Year	Industry Group																			
	1	2	3	6	7	8	9	10	11	13	14	15	16	17	19	20	Other			
2013Q1	2956812	941691	5546	730319	16923	363926	27996	46639	11987	76496	30347	31826	240001	207169	82729	49300	86840	7076		

■ These figures are to be treated with caution as the corresponding CV (Coefficient of variation) values are high.

Note: These Industry groups are based on ISIC - Rev. 4

- 1 Agriculture, forestry and fishing (A)
- 2 Mining & quarrying (B)
- 3 Manufacturing (C)
- 6 Construction, Electricity, gas, steam and air conditioning supply, Water supply, sewerage, waste management and remediation activities (D, E,F)
- 7 Wholesale and retail trade, repair of motor vehicles and motor cycles(G)
- 8 Transportation and storage (H)
- 9 Accommodation and food services activities (I)
- 10 Information and communication (J)
- 11 Financial and insurance activities (K)
- 13 Professional, scientific and technical activities (M)
- 14 Administrative and support service activities (N)
- 15 Public administration and defence compulsory social security (O)
- 16 Education (P)
- 17 Human health and social work activities (Q)
- 19 Other service activities (S)
- 20 Activities of households as employers; undifferentiated goods and services - producing activities of households for own use (T)
- Other
 - 12 Real estate activities (L)
 - 18 Arts, entertainment and recreation (R)
 - 21 Activities of extra territorial organizations & bodies (U)

Table 6C: Historical table of currently employed population by major industry group - Both sexes

Major Industry Group	Year
	2013Q1
Total	8,451,187
Agriculture	2,384,795
Industry	2,273,387
Services	3,793,005

Table 6D: Historical table of currently employed population by major industry group (percentage) - Both sexes

Major Industry Group	Year
	2013Q1
Total	100.0
Agriculture	28.2
Industry	26.9
Services	44.9

Note: These Industry groups are based on ISIC - Rev. 4

Agriculture

1. Agriculture Forestry and Fishery (A)

Industries

1. Mining & Quarrying (B)
2. Manufacturing (C)
3. Construction, Electricity, gas, steam and air conditioning supply, Water supply, sewerage, waste management and remediation activities (D, E,F)

Services

1. Wholesale and retail trade, repair of motor vehicles and motor cycles(G)
2. Transportation and storage (H)
3. Accommodation and food services activities (I)
4. Information and communication (J)
5. Financial and insurance activities (K)
6. Professional, scientific and technical activities (M)
7. Administrative and support service activities (N)
8. Public administration and defence compulsory social security (O)
9. Education (P)
10. Human health and social work activities (Q)
11. Other service activities (S)
12. Activities of households as employers; undifferentiated goods and services - producing activities of households for own use (U)
13. Real estate activities (L) Arts, entertainment and recreation (R) Activities of extra territorial organizations & bodies (U)

Table 7 - Currently Employed person by Occupation group (Based on ISCO 08) - Both sexes

Year	Occupation group										
	1	2	3	4	5	6	7	8	9	0	
Total											
2013Q1	8,451,187	386,014	529,198	526,092	326,261	939,243	1,614,985	1,439,627	755,911	1,861,809	72,047

Table 7A - Currently Employed person by Occupation group (Based on ISCO 08) - Male

Year	Occupation group										
	1	2	3	4	5	6	7	8	9	0	
Total											
2013Q1	5,494,375	263,261	208,292	331,813	153,235	638,914	1,049,024	991,394	638,205	1,159,943	60,293

Table 7B - Currently Employed pers on by Occupation group (Based on ISCO 08) - Female

Year	Occupation group										
	1	2	3	4	5	6	7	8	9	0	
Total											
2013Q1	2956812	122753	320906	194279	173026	300328	565961	448233	117706	701866	11754

These figures are to be treated with caution as the corresponding CV (Coefficient of variation) values are high.

- 1 Managers, Senior Officials and Legislators
- 2 Professionals
- 3 Technicians and Associate Professionals
- 4 Clerks and Clerical support workers
- 5 Services and Sales workers
- 6 Skilled Agriculture, Forestry and Fishery workers
- 7 Craft and Related Trades workers
- 8 Plant and Machine operators and Assemblers
- 9 Elementary occupations
- 10 Armed Forces Occupations

TABLE 8 - CURRENTLY EMPLOYED PERSONS BY HOURS PER WEEK ACTUALLY WORKED AT THE MAIN JOB AND MAJOR INDUSTRIAL GROUP (PERCENTAGE) - BOTH SEXES

MAJOR INDUSTRIAL GROUP	TOTAL	0 *	1 - 9	10 - 19	20 - 29	30 - 39	40 - 49	50 & OVER
Total	100.0	3.2	1.8	4.5	8.2	14.5	39.0	28.9
1	100.0	4.1	3.9	9.3	13.4	20.9	34.9	13.6
2	100.0	5.6	2.7	2.4	9.5	4.8	38.5	36.5
3	100.0	3.7	1.3	3.7	8.0	10.9	40.7	31.8
6	100.0	3.8	0.3	2.0	8.4	12.3	43.5	29.7
7	100.0	1.8	0.5	2.8	5.9	9.3	30.1	49.6
8	100.0	3.2	1.3	1.8	3.5	9.9	30.6	49.6
9	100.0	2.8	1.5	1.5	5.7	6.0	36.6	47.4
10	100.0				1.8	5.2	70.9	22.1
11	100.0	1.9			2.8	3.6	74.3	17.3
13	100.0		2.9	1.4	7.5	18.1	43.3	26.8
14	100.0	1.8	0.6		0.8	6.7	52.2	37.9
15	100.0	1.7	0.7	0.8	1.6	8.6	60.4	26.1
16	100.0	1.5	1.3	5.4	11.4	48.6	24.9	6.9
17	100.0	1.9	1.6	2.5	2.2	6.1	54.4	31.3
19	100.0	7.8	3.3	5.3	5.5	16.7	35.9	25.6
20	100.0	2.3	2.1	4.8	6.9	16.4	29.8	37.7
other	100.0	4.1	12.6	4.5	38.9	39.9

* Has a job but not at work during the reference week

■ Reliable estimates cannot be provided.

.. Negligible

Industry group

- 1 Agriculture, forestry and fishing (A)
- 2 Mining & quarrying (B)
- 3 Manufacturing (C)
- 6 Construction, Electricity, gas, steam and air conditioning supply, Water supply, sewerage, waste management and recreation (R)
- and remediation activities (D, E, F)
- 7 Wholesale and retail trade, repair of motor vehicles and motor cycles (G)
- 8 Transportation and storage (H)
- 9 Accommodation and food services activities (I)
- 10 Information and communication (J)
- 11 Financial and insurance activities (K)
- 13 Professional, scientific and technical activities (M)
- 14 Administrative and support service activities (N)
- 15 Public administration and defence compulsory social security (O)
- 16 Education (P)
- 17 Human health and social work activities (Q)
- 19 Other service activities (S)
- 20 Activities of households as employers; undifferentiated goods and services - producing activities of households for own use (T)
- Other
- 12 Real estate activities (L)
- 18 Arts, entertainment and recreation (R)
- 21 Activities of extra territorial organizations & bodies (U)

**TABLE 9 - HISTORICAL TABLE OF CURRENTLY UNEMPLOYED PERSONS BY AGE GROUPS
(PERCENTAGE) - BOTH SEXES**

YEAR	TOTAL	AGE GROUPS				
		15 - 19 YRS	20 - 24 YRS	25 - 29 YRS	30 - 39 YRS	40 + YRS
2006 ¹	100.0	17.5	39.3	21.5	11.9	9.8
2007 ¹	100.0	15.7	41.2	19.7	13.1	10.4
2008 ²	100.0	15.8	38.4	21.5	13.6	10.6
2009 ²	100.0	14.5	37.5	21.3	15.1	11.6
2010 ²	100.0	14.8	38.7	21.2	14.7	10.6
2011 ³	100.0	12.8	42.5	20.6	15.6	8.5
2012 ³	100.0	14.2	40.6	18.8	15.6	10.7
2013Q1 ³	100.0	12.9	42.0	17.7	13.9	13.4

**TABLE 9A - HISTORICAL TABLE OF CURRENTLY UNEMPLOYED PERSONS BY AGE GROUPS
(PERCENTAGE) - MALE**

YEAR	TOTAL	AGE GROUPS				
		15 - 19 YRS	20 - 24 YRS	25 - 29 YRS	30 - 39 YRS	40+ YRS
2006 ¹	100.0	21.2	40.1	18.4	8.3	11.9
2007 ¹	100.0	19.9	40.7	16.0	10.2	13.1
2008 ²	100.0	19.4	37.8	19.5	9.4	13.9
2009 ²	100.0	17.9	36.4	18.9	12.4	14.4
2010 ²	100.0	19.6	41.2	15.5	11.7	12.0
2011 ³	100.0	17.6	44.9	16.7	13.1	7.6
2012 ³	100.0	19.5	41.6	17.1	12.4	9.4
2013Q1 ³	100.0	13.6	47.5	16.6	10.6	11.6

**TABLE 9B - HISTORICAL TABLE OF CURRENTLY UNEMPLOYED PERSONS BY AGE GROUPS
(PERCENTAGE) - FEMALE**

YEAR	TOTAL	AGE GROUPS				
		15 - 19 YRS	20 - 24 YRS	25 - 29 YRS	30 - 39 YRS	40+ YRS
2006 ¹	100.0	14.4	38.7	24.2	14.9	7.9
2007 ¹	100.0	11.9	41.5	23.0	15.6	8.0
2008 ²	100.0	12.9	38.9	23.2	17.0	8.0
2009 ²	100.0	11.5	38.5	23.5	17.5	9.0
2010 ²	100.0	10.7	36.5	26.1	17.4	9.3
2011 ³	100.0	9.3	40.7	23.4	17.5	9.1
2012 ³	100.0	9.4	39.8	20.3	18.6	11.9
2013Q1 ³	100.0	12.3	37.3	18.7	16.7	15.0

These figures are to be treated with caution as the corresponding CV (Coefficient of variation) values are high.

¹ - Excluding Northern & Eastern provinces

³ - All the districts are included

² - Including Eastern province but Excluding Northern province

**TABLE 10 - HISTORICAL TABLE OF CURRENTLY UNEMPLOYED PERSONS BY LEVEL OF EDUCATION
(PERCENTAGE) - BOTH SEXES**

YEAR	TOTAL	LEVEL OF EDUCATION			
		GRADE 5 & BELOW	GRADES 6 - 10	GCE(O/L) NCGE	GCE(A/L) HNCE & ABOVE
2006 ¹	100.0	4.5	41.8	26.7	27.0
2007 ¹	100.0	4.3	41.0	22.1	32.6
2008 ²	100.0	4.5	39.3	23.4	32.8
2009 ²	100.0	4.3	39.9	23.1	32.7
2010 ²	100.0	2.7	34.9	22.7	39.7
2011 ³	100.0	2.7	37.9	19.9	39.4
2012 ³	100.0	2.6	37.4	27.3	32.8
2013Q1 ³	100.0	2.8	36.8	20.9	39.6

**TABLE 10A - HISTORICAL TABLE OF CURRENTLY UNEMPLOYED PERSONS BY LEVEL OF EDUCATION
(PERCENTAGE) - MALE**

YEAR	TOTAL	LEVEL OF EDUCATION			
		GRADE 5 & BELOW	GRADES 6 - 10	GCE(O/L) NCGE	GCE(A/L) HNCE & ABOVE
2006 ¹	100.0	6.1	48.8	26.7	18.3
2007 ¹	100.0	5.8	49.4	24.5	20.3
2008 ²	100.0	5.3	49.7	23.1	21.9
2009 ²	100.0	4.4	48.0	25.3	22.3
2010 ²	100.0	3.4	40.4	25.4	30.9
2011 ³	100.0	2.0	47.6	20.4	29.9
2012 ³	100.0	2.0	46.8	29.7	21.5
2013Q1 ³	100.0	3.8	40.9	25.7	29.6

**TABLE 10B - HISTORICAL TABLE OF CURRENTLY UNEMPLOYED PERSONS BY LEVEL OF EDUCATION
(PERCENTAGE) - FEMALE**

YEAR	TOTAL	LEVEL OF EDUCATION			
		GRADE 5 & BELOW	GRADES 6 - 10	GCE(O/L) NCGE	GCE(A/L) HNCE & ABOVE
2006 ¹	100.0	3.1	35.8	26.7	34.3
2007 ¹	100.0	3.0	33.5	19.9	43.6
2008 ²	100.0	3.8	30.9	23.7	41.7
2009 ²	100.0	4.3	32.5	21.1	42.1
2010 ²	100.0	2.1	30.1	20.5	47.3
2011 ³	100.0	3.3	30.7	19.5	46.5
2012 ³	100.0	3.0	28.8	25.1	43.1
2013Q1 ³	100.0	1.9	33.3	16.8	48.0

These figures are to be treated with caution as the corresponding CV (Coefficient of variation) values are high.

¹ - Excluding Northern & Eastern provinces

³ - All the districts are included

² - Including Eastern province but Excluding Northern province

TABLE 11 - CURRENTLY UNEMPLOYED PERSONS BY SEX AND DURATION OF UNEMPLOYMENT

(2013 1 st Quarter)				
Sex	Total	Duration		
		Less than 6 months	6 to less than 12 months	12+ months
Both sexes	410,733	146,454	80,672	183,607
%	100.0	35.7	19.6	44.7
Male	188,693	74,752	39,872	74,068
%	100.0	39.6	21.1	39.3
Female	222,040	71,702	40,800	109,539
%	100.0	32.3	18.4	49.3

STANDARD ERROR AND COEFFICIENT OF VARIATION OF SELECTED VARIABLES

	(2013 1 st quarter)					
	Estimated Value	Standard Error	Coefficient of Variation (%)	Estimated Value (Ratio)	Standard Error	Coefficient of Variation (%)
General labour force characteristics						
Population (15 years & over)	16,356,181	165,418	1.01	-	-	-
Employed Population	8,451,187	110,245	1.30	-	-	-
Unemployed Population	410,733	26,945	6.6	-	-	-
Employment Rate	-	-	-	4.6	0.294	6.333
Unemployment Rate	-	-	-	95.4	0.294	0.308
Labour Force	8,861,919	114,463	1.29	-	-	-
Not in Labour Force	7,494,262	114,839	1.53	-	-	-
Employed persons by major industry Groups						
1	2,384,795	97640.74	4.1	-	-	-
2	91,095	18493.24	20.3	-	-	-
3	1,562,593	64422.38	4.1	-	-	-
6	619,699	34863.06	5.6	-	-	-
7	1,179,540	50812.76	4.3	-	-	-
8	538,086	26753.68	5.0	-	-	-
9	172,303	18572.22	10.8	-	-	-
10	60,176	11055.89	18.4	-	-	-
11	171,119	16960.71	9.9	-	-	-
13	78,545	10875.07	13.8	-	-	-
14	113,199	13696.95	12.1	-	-	-
15	680,605	35954.27	5.3	-	-	-
16	304,780	23844.34	7.8	-	-	-
17	135,555	14756.65	10.9	-	-	-
19	135,519	14789.55	10.9	-	-	-
20	181,797	18570.21	10.2	-	-	-
21	41,783	7669.78	18.4	-	-	-
Unemployed persons by level of education						
Below grade 5	11,375	3,863	33.96	-	-	-
Grade 5 - 9/Year 6 - 10	151,194	15,549	10.28	-	-	-
G.C.E.(O/L)/N.C.G.E.	85,706	11,543	13.47	-	-	-
G.C.E.(A/L)/H.N.C.E. & above	162,457	15,659	9.64	-	-	-
Industry group						
1 Agriculture, forestry and fishing (A)						
2 Mining & quarrying (B)						
3 Manufacturing (C)						
6 Construction, Electricity, gas, steam and air conditioning supply, Water supply, sewerage, waste management and remediation activities (D, E,F)						
7 Wholesale and retail trade, repair of motor vehicles and motor cycles(G)						
8 Transportation and storage (H)						
9 Accommodation and food services activities (I)						
10 Information and communication (J)						
11 Financial and insurance activities (K)						
13 Professional, scientific and technical activities (M)						
14 Administrative and support service activities (N)						
15 Public administration and defence compulsory social security (O)						
16 Education (P)						
17 Human health and social work activities (Q)						
19 Other service activities (S)						
20 Activities of households as employers; undifferentiated goods and services - producing activities of households for own use (T)						
Other						
Other						
Real estate activities (L)						
Arts, entertainment and recreation (R)						
Activities of extra territorial organizations & bodies (U)						

Explanatory Notes

Coverage

Sri Lanka Labour Force Survey was designed to measure the levels and trends of employment, unemployment and labour force in Sri Lanka. This survey is being conducted quarterly, since the first quarter of 1990.

This quarterly survey of households is conducted through a scientifically selected sample designed to represent the civilian non-institutional population. Respondents are interviewed to obtain information about the employment status etc. of each member of the household 15 years of age and older.

Data collection of the survey is done during the third week of the each month, Monday through Sunday. This is known as the "survey week". The information relates to economic activity and employment status are referred to the preceding week of the survey week; referred to as the "reference week".

The concepts and definitions underlying labour force data are as follows.

Concepts and definitions

1. **Labour force:** The labour force is composed of the economically active population 15 years of age and over.
2. **The Economically Active Population:** is defined as those persons who are/were employed or unemployed during the reference period of the survey.
3. **Employed:** Persons, who during the reference period, worked as paid employees, employers, own account workers (self-employed), or contributing family workers are said to be employed. This includes persons with a job but not at work during the reference period.
4. **Unemployed:** Persons who are seeking and available for work, but had no employment during the reference period.
5. **Currently Economically Active:** A person who was employed or unemployed during the current reference period is considered to be currently economically active.
6. **Not in the Labour Force (not economically active):** Persons who were neither working nor available/looking for work are classified as "not in the labour force". Persons are not in the labour force for such reasons as: full time care of the household, full – time students, retired or old age, infirmed or disabled, or are not interested in working for one reason or another. Current and Usual definitions apply.

Reliability of the estimates

Statistics based on the quarterly labour force data are subject to both sampling and non - sampling errors. When a sample rather than the entire population is surveyed, there is a chance that the sample estimates may differ from the "true" population values they represent.

The exact difference, or sampling error, varies depending on the particular sample selected, and this variability is measured by the standard error of the estimate. There is about a 95 percent chance, or level of confidence, that an estimate based on a sample will differ by no more than 1.96 standard errors from the " true" population value, because of sampling error. Analyses relating to the Labour Force Survey are generally conducted at the 95 percent level of confidence.

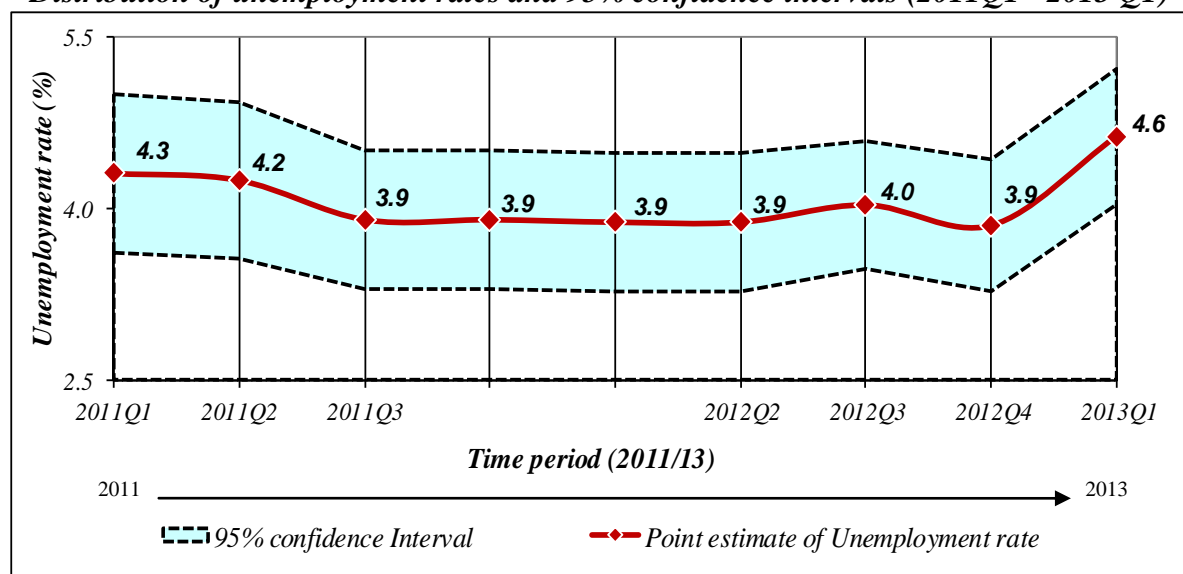
For example, the confidence interval for the quarterly unemployment rate is on the order of

$$\begin{aligned} &\text{Estimated value (of the unemployment rate)} \pm (\text{standard error}) * (1.96) \\ &6.4 \pm (0.4) * (1.96) \\ &(6.4 \pm 0.784) \end{aligned}$$

This means, the 95 percent confidence interval on the quarterly unemployment rate could range from (5.6 to 7.2) . This implies that there is about 95 percent chance that the "true" unemployment rate lies within this interval. This range includes all the values range from 5.6 to 7.2 . When the comparison of this estimate is done between two quarters, if any of the value within the 95 percent confidence interval of one quarter overlaps with the confidence interval of the other , it means that the estimates of this two quarters *are not significantly different*.

Therefore, in each quarterly labour force report, a separate table is given including approximate standard errors for some selected variables, so that users could understand this statistical scenario clearly.

Distribution of unemployment rates and 95% confidence intervals (2011Q1 - 2013 Q1)



Note:

- Survey was not conducted in the fourth quarter 2011 & first quarter 2012 due to activities of population census.
- Excluding Northern Province

As seen in figure 2, it is very important to note that, there were no statistically significant differences between the unemployment rates reported in different time periods of 2011/2013, when sampling error was considered.

Change in survey schedule

Current survey concepts and methods are very similar to those introduced at the beginning of the survey in 1990. However, some changes have been made over the years to improve the accuracy and usefulness of the data. In January 2006, some improvements were made to the labour force survey schedule in order to fulfill the requirements of data users and also to provide additional information for planning purposes. The revision was made focusing on literacy, household economic activities, and informal sector employment and under employment etc.

From January , 2013 onwards, the lower bound of working age populations is considered as age 15, hence age 15 and over population is considered as working age population .The survey schedule is updated to obtain more precise information on following age, informal employment, informal sector, secondary occupation, wages & income , unemployment & trainings.

New Industry & Occupation classifications

From January 2013 onward the survey uses new industry & occupation classifications, such as

SLIC Rev 4:- Sri Lanka Standard Industry Classification based on International Standard Industry classification - Rev.4 (ISIC Rev 4)

SLSCO 08:- Sri Lanka Standard Classification of Occupation -2008 based on International Standard Classification of Occupation-2008 (ISCO 2008)

Note :

It is important to note that, all the data published here are the estimates based on a sample survey and these are subject to sampling errors. These sampling errors can be statistically evaluated from the survey results. Therefore, sampling error is normally measured in terms of the standard error of the particular variable. Standard error could be used to calculate the confidence limits with a prescribed accuracy where the true value of the estimates lies.

Further reliability of the estimates can be expressed in terms of Coefficient of Variation (CV). The CV is a relative measure of the sampling error and is calculated as sampling error divided by the expected value of the given characteristic.

In view of this, following table is given to show the estimates for some selected variables, it's standard error, CV and 95% Confidence interval.

It is also important to note that all the estimates we publish in this report are subject to sampling error and one should be cautious in the interpretation of results, especially with respect to the trends over time.

Estimate of Confidence Intervals for some selected characteristics

Year	Labour Force					Employed				
	No.	Standard error	C.V (%)	95% C.I.		No.	Standard error	C.V (%)	95% C.I.	
				Lower	Upper				Lower	Upper
2006 ¹	7,576,415	102,940	1.36	7,374,579	7,778,251	7,084,346	97,662	1.38	6,892,860	7,275,832
2007 ¹	7,472,932	104,109	1.39	7,268,805	7,677,059	7,026,733	99,184	1.41	6,832,262	7,221,204
2008 ²	8,061,725	109,709	1.36	7,846,618	8,276,832	7,628,683	104,306	1.37	7,424,169	7,833,196
2009 ²	8,051,089	107,213	1.33	7,840,876	8,261,302	7,579,835	102,161	1.35	7,379,527	7,780,143
2010 ²	8,096,477	110,375	1.36	7,880,065	8,312,889	7,696,142	105,457	1.37	7,489,372	7,902,913
2011 ³	8,543,776	163,523	1.91	8,223,154	8,864,397	8,186,305	157,067	1.92	7,878,342	8,494,268
2012 ³	8,454,364	144,233	1.71	8,171,566	8,737,162	8,118,362	138,850	1.71	7,846,117	8,390,606
2013Q1 ³	8,861,919	114,463	1.29	8,637,090	9,086,749	8,451,187	110,245	1.30	8,234,641	8,667,732

Year	Unemployed					Unemployment Rate				
	No.	Standard error	C.V (%)	95% C.I.		Rate	Standard error	C.V (%)	95% C.I.	
				Lower	Upper				Lower	Upper
2006 ¹	492,069	15,823	3.2	461,045	523,093	6.5	0.2	2.95	6.1	6.9
2007 ¹	446,199	14,698	3.3	417,380	475,018	6.0	0.2	3.02	5.6	6.3
2008 ²	433,042	14,975	3.5	403,680	462,405	5.4	0.2	3.14	5.0	5.7
2009 ²	471,254	15,683	3.3	440,503	502,004	5.9	0.2	3.07	5.5	6.2
2010 ²	400,335	14,742	3.7	371,430	429,240	4.9	0.2	3.39	4.6	5.3
2011 ³	357,471	17,726	5.0	322,715	392,226	4.2	0.2	4.52	3.8	4.6
2012 ³	336,002	15,267	4.5	306,067	365,938	4.0	0.2	4.17	3.6	4.3
2013Q1 ³	410,733	26,945	6.6	357,806	463,659	4.6	0.3	6.3	4.1	5.2

¹ - Excluding Northern & Eastern provinces

³ - All the districts are included

² - Including Eastern province but Excluding Northern province

Alternative Estimates of Employment, Unemployment and Labour Force Characteristics

Official employment, unemployment and labour force characteristics are estimated at the Sri Lanka Labour Force Survey, based on the internationally comparable concepts and definitions recommended by the ILO. However the validity of the concepts and definitions used at the survey is questioned very often in some forums, for the appropriateness of these concepts and definitions in the Sri Lankan context.

The concepts and definitions, which were found to be controversial, are as below.

- (1) **Number of Hours of Work** : A person who work **at least one hour** during the reference week, is considered **employed**, under these definitions.
- (2) **Working Age Population** : All persons of **age 10 years and over** are considered to be in the working age, before 2013. However, this was changed as age 15 and over from 2013 onward.
- (3) **Employment Status** : All,
 - a) Paid employees, (those who work for wages/salaries).
 - b) Employers (who have at least one paid employee under them).
 - c) Own account workers (who carry out the economic activity without having any paid employees).
 - d) Contributing family workers (who make their contribution to the economic activities carried out by their own household, without wages/salaries).

The validity of the above concepts and definitions is raised due to the following reasons.

- (1) **Number of Hours of Work** : Some pointed out that one hour per week is too low, to consider a person to be employed.
- (2) **Working Age Population** : Some pointed out those persons in the age group 10-14 yrs. are too young to be considered in the working age. (From 2013 onward the working age population is considered as age 15 and over).
- (3) **Employment Status** : Some pointed out that 'contributing family workers' may work in the family enterprise without payment because they have no other work, and so it is not appropriate to consider them as employed.

An attempt has been made to produce '**Alternative estimates of Employment, Unemployment and Labour Force Characteristics,**' by revising the original concepts and definitions so that the above issues are addressed as explained below.

The revisions made are,

- (1) **Number of Hours of Work** : Persons who work **20 hours or more per week only** are considered to be employed.
- (2) **Contributing Family Worker** : Contributing family workers are **not** considered as employed. Those contributing family workers who were reported to be seeking some other work are considered as **unemployed** and the rest of the unpaid family workers are considered as **economically inactive** (not in the labour force) so only, **a) paid employees b) employers and c) own account workers are considered to be employed.**

Following tables are based on the above alternative concepts and definitions.

TABLE 1 - LABOUR FORCE STATUS OF HOUSEHOLD POPULATION 15 YEARS & OVER (ALTERNATIVE ESTIMATES)

YEAR	HOUSEHOLD POPULATION (15 YEARS & OVER)	TOTAL LABOUR FORCE	LABOUR FORCE PARTICI: RATE(%)	LABOUR FORCE				NOT IN LABOUR FORCE NUMBER
				EMPLOYED		UNEMPLOYED		
				NUMBER	RATE (% TO TOTAL LABOUR FORCE)	NUMBER	RATE (% TO TOTAL LABOUR FORCE)	
2006 ¹	13,261,409	6,467,138	48.8	5,975,069	92.4	492,069	7.6	6,794,271
2007 ¹	13,459,252	6,425,260	47.7	5,979,061	93.1	446,199	6.9	7,033,992
2008 ²	14,626,833	6,859,040	46.9	6,425,997	93.7	433,042	6.3	7,767,793
2009 ²	14,876,264	6,836,598	46.0	6,365,344	93.1	471,254	6.9	8,039,665
2010 ²	15,166,285	6,892,444	45.4	6,492,109	94.2	400,335	5.8	8,273,841
2011 ³	16,122,111	7,196,558	44.6	6,839,087	95.0	357,471	5.0	8,925,553
2012 ³	16,081,285	7,417,834	46.1	7,081,831	95.5	336,003	4.5	8,663,451
2013Q1 ³	16,356,181	7,671,694	46.9	7,260,961	94.6	410,733	5.4	8,684,487

TABLE 2 - HISTORICAL TABLE OF NUMBER AND RATE OF UNEMPLOYMENT BY AGE (ALTERNATIVE ESTIMATES)

YEAR	AGE GROUP											
	TOTAL		15 - 19		20 - 24		25 - 29		30 - 39		40 & ABOVE	
	NO.	RATE	NO.	RATE	NO.	RATE	NO.	RATE	NO.	RATE	NO.	RATE
2006 ¹	492,139	7.6	86,180	29.7	193,481	24.0	105,966	12.5	58,443	3.8	47,999	1.6
2007 ¹	446,265	6.9	69,856	27.7	183,617	24.0	87,993	10.7	58,252	3.8	46,480	1.5
2008 ²	433,105	6.3	68,487	27.1	166,409	20.8	93,202	10.9	58,838	3.6	46,107	1.4
2009 ²	471,322	6.9	68,447	27.3	176,801	24.9	100,508	11.9	70,988	4.2	54,511	1.6
2010 ²	400,398	5.8	59,339	26.5	154,788	22.5	84,777	10.5	59,041	3.6	42,390	1.2
2011 ³	357,524	5.0	45,900	21.0	151,882	20.7	73,545	8.7	55,880	3.2	30,263	0.8
2012 ³	336,056	4.5	47,690	23.6	136,553	19.5	63,135	7.3	52,541	2.8	36,084	1.0
2013Q1 ³	410,733	5.4	53,027	22.7	172,550	23.1	72,824	8.3	57,169	3.0	55,164	1.4

¹ - Excluding Northern & Eastern provinces³ - All the districts are included² - Including Eastern province but Excluding Northern province

Table 3 - Currently Employed persons by Industry group (No. and percentage) (Based on ISIC Fourth Revision) - (Alternative estimates)

Year	Industry Group																			
	1	2	3	6	7	8	9	10	11	13	14	15	16	17	19	20	Other			
Total	86,419	1,406,822	605,044	1,013,527	515,509	156,892	60,176	171,119	73,755	112,561	670,427	284,454	128,800	120,390	166,217	40,067				
2013Q1 ³ No.	7,260,961																			
%	22.7	1.2	19.4	8.3	14.0	7.1	2.2	0.8	2.4	1.0	1.6	9.2	3.9	1.8	1.7	2.3	0.6			
Industry group																		Other		
1 Agriculture, forestry and fishing (A)																		12 Real estate activities (L)		
2 Mining & quarrying (B)																		18 Arts, entertainment and recreation (R)		
3 Manufacturing (C)																		21 Activities of extra territorial organizations & bodies (U)		
6 Construction, Electricity, gas, steam and air conditioning supply, Water supply, sewerage, waste management and remediation activities (D, E,F)																				
7 Wholesale and retail trade, repair of motor vehicles and motor cycles(G)																				
8 Transportation and storage (H)																				
9 Accommodation and food services activities (I)																				
10 Information and communication (J)																				
11 Financial and insurance activities (K)																				
13 Professional, scientific and technical activities (M)																				
14 Administrative and support service activities (N)																				
15 Public administration and defence compulsory social security (O)																				
16 Education (P)																				
17 Human health and social work activities (Q)																				
19 Other service activities (S)																				
20 Activities of households as employers; undifferentiated goods and services - producing activities of households for own use (U)																				
Other																				