



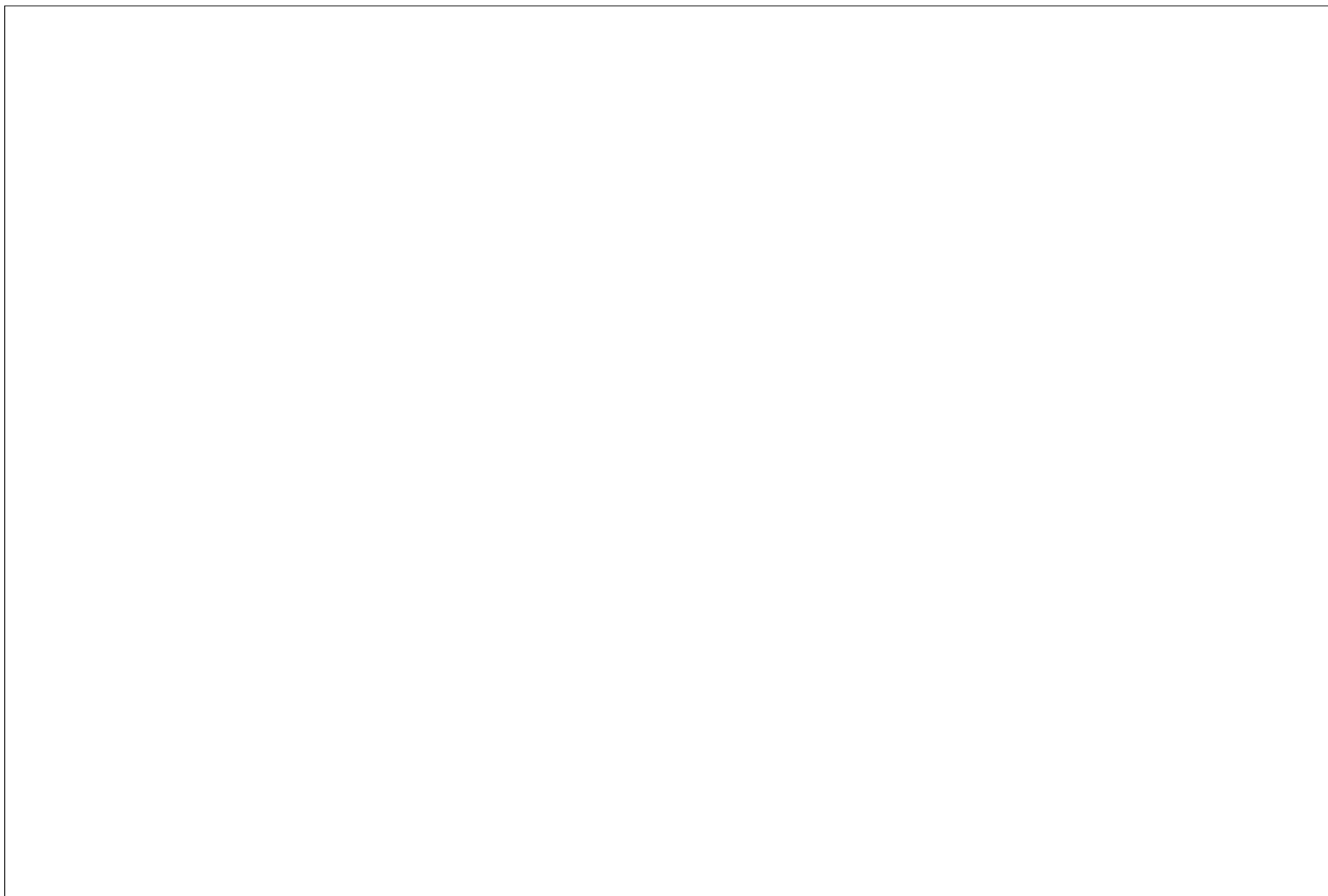
# Annual School Census of Sri Lanka

Summary Report - 2025

Ministry of Education



*Prepared by Statistics Branch of Ministry of Education of Sri Lanka*



## List of Statistical Tables

Table	Page
Content	<b>i</b>
<b>School Census - 2025- Summary Statistics of All Government Schools</b>	
1. At a Glance - Basic Statistics of Government Schools - 2025	1
2.1 Administrative Structure of Education by Province - 2025	2
2.2 Administrative Structure of Education by District - 2025	2
3. Summary Statistics of Government Schools - 2025	3
4. Summary Statistics of Government Schools by Students - 2025	5
5. Summary Statistics of Government Schools by Teaching Staff - 2025	6
6. Comparison of Basic Statistics of National and Provincial Schools -2025	7
7. Grade 1 Admission Related Statistics of Government Schools -2025	8
8. Government Schools by Size of Student Population -2025	9
9. Government Schools by Size of Teaching Staff Population -2025	10
10. Grade-wise Students of Government Schools by Sex and Medium of Study -2025	11
11. Teachers of Govt. Schools by Qualification Classification -2025	13
12. Student Teacher Ratios (STRs) of Government Schools -2025	14
13. Basic Statistics of National and Provincial Schools by Province - 2025	15
14. Basic Statistics of National and Provincial Schools by District - 2025	16
15. Basic Statistics of Government Schools by Zones -2025	17-20
16. Comparison of Basic Statistics of National and Provincial Schools by Zones - 2025	21-24
<b>Summary Statistics of Other Schools (Private, Special and Pirivena)</b>	
17. Basic Statistics of Private Schools by Province and District -2025	25
18. Basic Statistics of Special Schools by Province and District -2025	26
19. <i>Basic Statistics of Piriven (Temple Schools) by District -2025</i>	27

**Census Date: 2025 June 01st**

## Definitions

### \* School Census 2025 held on 01st June 2025

\* Last School Census 2024 (2025) held on 24th Jan. 2025. (Last Official date of Academic Year 2024)

#### • Definitions for Level of School;

**National Schools** – Government Schools that have administrated under the Central government

**Provincial Schools** – Government Schools that have administrated under the Provincial councils

#### • Classifications of Schools/ Definitions for Type of School;

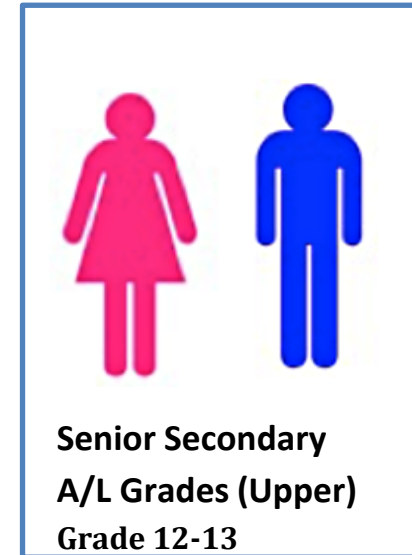
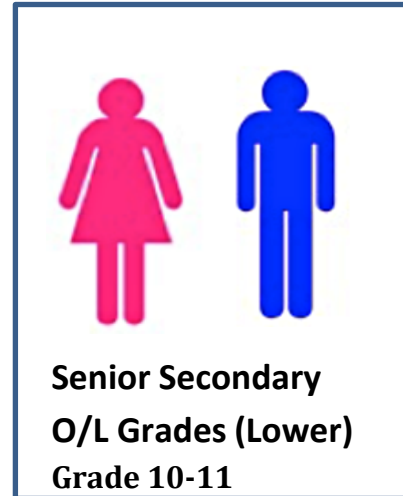
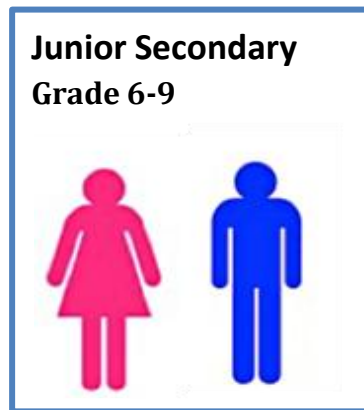
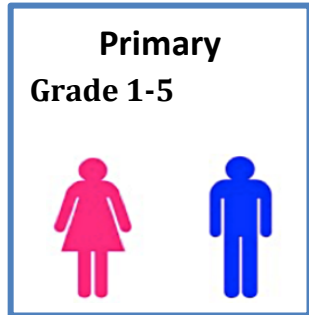
**1AB** - Schools having Advanced Level Science (Bio Science and/ or Physical Science) stream classes

**1C** - Schools having Advanced Level classes at least one stream other than Science (Arts and/or Commerce and/or Technology streams and/ or Vocational) are classified as 1C Schools

**Type 2** - Schools having classes only up to grade 11 (Grade 1-11 or grade 6-11 or grade 1-9)

**Type 3** - Schools having classes from grade 1-5/ Primary Schools

### Section Classification by Grade of Study of Students



#### • Medium of Study

Sinhala Medium – All Subjects are study in Sinhala medium

Tamil Medium – All Subjects are study in Tamil medium

Bilingual Medium – Some Selected Subjects are study in English medium and rest of subjects are study in one mother tongue (Sinhala/ Tamil medium) in grade 6-11 grades

English Medium – All Subjects are study in English medium in Advanced level grades (grade 12-13)

## Data Sheet of Basic Statistics of Government Schools -2025

### Schools

<b>All Government Schools</b>	<b>10,047</b>	<b>Schools by Language medium/s of Instruction</b>	<b>Schools by Student Population</b>
National Schools	396	Sinhala Medium Only	6,157
Provincial Schools	9,651	Tamil Medium Only	2,977
<b>Type of School (Functional Type)</b>		Sinhala and Tamil Mediums	34
1AB Schools	1,009	Sinhala and Bilingual(S/E) Mediums	630
1C Schools	1,962	Tamil and Bilingual(T/E) Mediums	209
Type 2 Schools	3,244	Trilingual (Sinhala, Tamil and Bilingual (S/E &/or T/E)) Mediums	40
Type 3 Schools	3,832	<b>School by Fuctional Grade Span</b>	
<b>School by Gender of the School</b>		Grade 1-5	3,832
Boys Schools	147	Grade 1-9	252
Girls Schools	239	Grade 1-11	2,972
Mixed Schools	9,661	Grade 1-13	2,004
		Grade 6-11	20
		Grade 6-13	967

### Teaching Staff (Teachers & Principals)

<b>All Teaching Staff</b>	<b>242,309</b>
Male Teaching Staff	55,413
Female Teaching Staff	186,896
<b>Principals*</b>	<b>12,648</b>
<b>All Teachers</b>	<b>229,661</b>
Male Teachers	48,686
Female Teachers	180,975
<i>* - Included SLEAS and SLPS Principals only</i>	
<b>Teaching Staff by Type of School</b>	
1AB Schools	82,250
1C Schools	65,681
Type 2 Schools	59,702
Type 3 Schools	34,676

### Students

<b>All Students</b>	<b>3,747,544</b>	<b>Students by Language medium/s study</b>	
Male Students	1,856,100	Sinhala Medium	2,692,039
Female Students	1,891,444	Tamil Medium	913,364
National Schools	825,644	Bilingual and English Medium	142,141
Provincial Schools	2,921,900	<b>Students by Grade Cycle of Studying</b>	
<b>Students by Type of School</b>		Primary Cycle (Grd 1-5)	1,427,829
1AB Schools	1,549,882	Junior Secondary Cycle (Grd 6-9)	1,280,744
1C Schools	966,909	Senior Secondary O/L Cycle (Grd 10-11)	622,213
Type 2 Schools	650,104	Senior Secondary A/L Cycle (Grd 12-13)	409,325
Type 3 Schools	580,649	Special Education Units	7,433

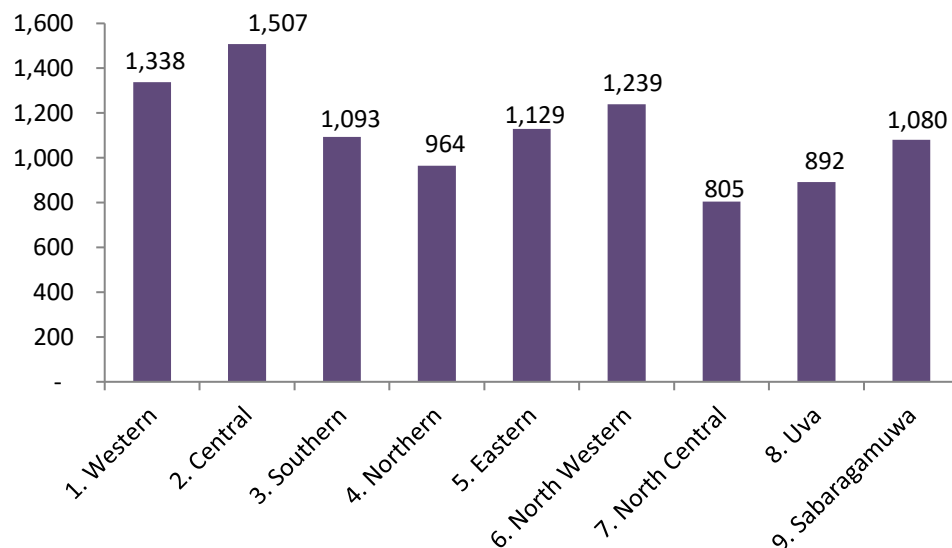
### Grade 1 Admissions

<b>Grade 1 Admissions</b>	<b>266,281</b>	<b>Grade 1 Admissions by Type of School</b>	
Male Students	135,587	1AB Schools	45,859
Female Students	130,694	1C Schools	58,571
National Schools	26,567	Type 2 Schools	51,943
Provincial Schools	239,714	Type 3 Schools	109,908

## 2.1: Administrative Structure of Education by Province -2025

Province	No. of Edu. Zones	No. of Edu. Divisions	All Govt. Schools	National Schools	Provincial Schools
1. Western	11	38	1,338	79	1,259
2. Central	15	40	1,507	56	1,451
3. Southern	11	39	1,093	70	1,023
4. Northern	13	35	964	24	940
5. Eastern	17	48	1,129	42	1,087
6. North Western	8	31	1,239	39	1,200
7. North Central	8	30	805	17	788
8. Uva	10	23	892	38	854
9. Sabaragamuwa	7	28	1,080	31	1,049
<b>Total</b>	<b>100</b>	<b>312</b>	<b>10,047</b>	<b>396</b>	<b>9,651</b>

**F1: No. of All Functional Govt. Schools by Province -2025**



## 2.2: Administrative Structure of Education by District -2025

Administrative District	No. of Edu. Zones	No. of Edu. Divisions	All Govt. Schools	National Schools	Provincial Schools
11. Colombo	4	14	391	39	352
12. Gampaha	4	13	533	20	513
13. Kalutara	3	11	414	20	394
21. Kandy	6	18	647	36	611
22. Matale	4	11	310	12	298
23. Nuwara Eliya	5	11	550	8	542
31. Galle	4	15	422	30	392
32. Matara	4	14	353	23	330
33. Hambantota	3	10	318	17	301
41. Jaffna	5	15	438	8	430
42. Mannar	2	5	132	5	127
43. Vavuniya	2	5	166	5	161
44. Mullaitivu	2	6	124	3	121
45. Kilinochchi	2	4	104	3	101
51. Batticaloa	5	14	368	13	355
52. Ampara	7	21	444	17	427
53. Trincomalee	5	13	317	12	305
61. Kurunegala	6	22	868	31	837
62. Puttalam	2	9	371	8	363
71. Anuradhapura	5	22	556	8	548
72. Polonnaruwa	3	8	249	9	240
81. Badulla	6	14	601	27	574
82. Moneragala	4	9	291	11	280
91. Ratnapura	4	16	582	16	566
92. Kegalle	3	12	498	15	483
<b>Total</b>	<b>100</b>	<b>312</b>	<b>10,047</b>	<b>396</b>	<b>9,651</b>

Source : School Census 2025

Reference Date: 2025-06-01

Govt. = Government Edu. = Education

### 3. Summary Statistics of Government Schools -2025

Category	No. of Schools	%	No. of Students	%	No. of Teaching Staff	%
<b>All Government Schools</b>	<b>10,047</b>		<b>3,747,544</b>		<b>242,309</b>	
<b>Level of School</b>						
National Schools	396	3.9	825,644	22.0	42,803	17.7
Provincial Schools	9,651	96.1	2,921,900	78.0	199,506	82.3
<b>Type of School</b>						
1AB Schools	1,009	10.0	1,549,882	41.4	82,250	33.9
1C Schools	1,962	19.5	966,909	25.8	65,746	27.1
Type 2 Schools	3,244	32.3	650,104	17.3	59,642	24.6
Type 3 Schools	3,832	38.1	580,649	15.5	34,671	14.3
<b>School by Fuctional Grade Span</b>						
Grade 1-5	3,832	38.1	580,649	15.5	34,671	14.3
Grade 1-9	252	2.5	28,912	0.8	3,023	1.2
Grade 1-11	2,972	29.6	619,473	16.5	56,354	23.3
Grade 1-13	2,004	19.9	1,620,708	43.2	95,393	39.4
Grade 6-11	20	0.2	1,719	0.0	265	0.1
Grade 6-13	967	9.6	896,083	23.9	52,603	21.7

1AB - Schools having Science Stream classes in Advanced Level  
 1C - Schools having Advanced Level classes other than Science Stream  
 Type 2 - School Having classes only up to Grade 11  
 Type 3 - School Having classes up to Grade 5/ Primary Schools

Category	No. of Schools	%	No. of Students	%	No. of Teaching Staff	%
<b>School by Gender of the School</b>						
Boys Schools	147	1.5	236,770	6.3	12,392	5.1
Girls Schools	239	2.4	354,460	9.5	18,218	7.5
Mixed Schools	9,661	96.2	3,156,314	84.2	211,699	87.4
<b>Ethnicity of the School</b>						
Sinhala Schools	6,821	67.9	2,800,070	74.7	175,028	72.2
Tamil Schools	2,283	22.7	528,027	14.1	41,185	17.0
Muslim Schools	943	9.4	419,447	11.2	26,096	10.8
<b>Schools by Language medium/s of Instruction</b>						
Sinhala Medium	6,157	61.3				
Tamil Medium	2,977	29.6				
Sinhala and Tamil Mediums	34	0.3				
Sinhala and Bilingual(S/E) Mediums	630	6.3				
Tamil and Bilingual(T/E) Mediums	209	2.1				
Trilingual (Sinhala, Tamil and Bilingual (S/E and/or T/E) Mediums)	40	0.4				
<b>Plantation Estate Schools</b>						
Located Outside the Estate	30	0.3	23,594	0.6	1,387	0.6
Located Inside the Estate	833	8.3	168,296	4.5	12,807	5.3

Source : School Census 2025

Prepared by Statistics Branch of MOE

### 3. Summary Statistics of Government Schools -2025

Category	No. of Schools	%	No. of Students	%	No. of Teaching Staff	%
<b>School by Local Government Area</b>						
Municipal Council (MC) Area	638	6.4	622,256	16.6	34,807	14.4
Urban Council (UC) Area	412	4.1	366,897	9.8	19,803	8.2
Pradesiya Sabha (PS) Area	8,997	89.5	2,758,391	73.6	187,699	77.5
<b>Schools by Student Population</b>						
1-50 Students	1,645	16.4	49,189	1.3	10,324	4.3
51-100 Students	1,648	16.4	122,891	3.3	16,923	7.0
101-200 Students	2,149	21.4	314,851	8.4	32,450	13.4
201-500 Students	2,546	25.3	812,019	21.7	56,925	23.5
501-1,000 Students	1,208	12.0	831,999	22.2	47,071	19.4
1,001-1,500 Students	372	3.7	448,994	12.0	23,804	9.8
1,501-2,000 Students	186	1.9	318,966	8.5	16,041	6.6
2,001-3,000 Students	192	1.9	459,537	12.3	21,744	9.0
3,001-4,000 Students	68	0.7	230,518	6.2	10,214	4.2
More than 4,000 Students	33	0.3	158,580	4.2	6,813	2.8

Category	No. of Schools	%	No. of Students	%	No. of Teaching Staff	%
<b>Schools by A/L Stream</b>						
Bio Science	995	33.5	55,349	13.5		
Physical Science	956	32.2	49,127	12.0		
Arts	2,949	99.4	147,061	35.9		
Commerce	1,874	63.1	88,451	21.6		
Technology	559	18.8	48,052	11.7		
Vocational	406	13.7	14,538	3.6		
Common	302	10.2	6,747	1.6		
A/L Stream School % calculated by no of Schools conducted any A/L Subject stream divided by Total no' of schools have A/Ls						
<b>Schools by No. of Teaching Staff</b>						
Less than 10 Teaching Staff	3,065	30.5	197,779	5.3	19,205	7.9
10-25 Teaching Staff	4,242	42.2	905,575	24.2	74,116	30.6
26-50 Teaching Staff	1,744	17.4	933,404	24.9	60,639	25.0
51-100 Teaching Staff	721	7.2	922,225	24.6	50,309	20.8
More than 100 Teaching Staff	275	2.7	788,561	21.0	38,040	15.7

#### 4. Summary Statistics of Government Schools by Students - 2025

Category	Total Students	%	Male	%	Female	%
<b>All Government Schools</b>	<b>3,747,544</b>		<b>1,856,100</b>	<b>49.5</b>	<b>1,891,444</b>	<b>50.5</b>
<b>Level of School</b>						
National Schools	825,644	22.0	418,874	50.7	406,770	49.3
Provincial Schools	2,921,900	78.0	1,437,226	49.2	1,484,674	50.8
<b>Students by Grade of Studying</b>						
Primary Cycle (Grade 1-5)	1,427,829	38.1	724,026	50.7	703,803	49.3
Junior Secondary Cycle (Grade 6-9)	1,280,744	34.2	641,881	50.1	638,863	49.9
Senior Secondary O/L Cycle (Grade 10-11)	622,213	16.6	309,813	49.8	312,400	50.2
Senior Secondary A/L Cycle (Grade 12-13)	409,325	10.9	175,783	42.9	233,542	57.1
Special Edu. Units	7,433	0.2	4,597	61.8	2,836	38.2
<b>Ethnicity of the School Established</b>						
Sinhala Schools	2,800,070	74.7	1,391,481	49.7	1,408,589	50.3
Tamil Schools	528,027	14.1	262,895	49.8	265,132	50.2
Muslim Schools	419,447	11.2	201,724	48.1	217,723	51.9
<b>Plantation Estate Schools</b>						
Located outside the estate	23,594	0.6	11,971	50.7	11,623	49.3
Located inside the estate	168,296	4.5	83,215	49.4	85,081	50.6

Category	Total Students	%	Male	%	Female	%
<b>Type of School</b>						
1AB Schools	1,549,882	41.4	749,132	48.3	800,750	51.7
1C Schools	966,909	25.8	473,148	48.9	493,761	51.1
Type 2 Schools	650,104	17.3	334,291	51.4	315,813	48.6
Type 3 Schools	580,649	15.5	299,529	51.6	281,120	48.4
<b>Students by Language medium/s study</b>						
Sinhala Medium Only	2,692,039	71.8	1,342,112	49.9	1,349,927	50.1
Tamil Medium Only	913,364	24.4	450,983	49.4	462,381	50.6
Bilingual Medium *	142,141	3.8	63,005	44.3	79,136	55.7
<b>Students by A/L Stream</b>						
Bio Science	55,349	13.5	14,658	26.5	40,691	73.5
Physical Science	49,127	12.0	30,570	62.2	18,557	37.8
Arts	147,061	35.9	43,847	29.8	103,214	70.2
Commerce	88,451	21.6	38,881	44.0	49,570	56.0
Technology	48,052	11.7	34,787	72.4	13,265	27.6
Vocational	14,538	3.6	9,177	63.1	5,361	36.9
Common	6,747	1.6	3,863	57.3	2,884	42.7

Remarks: \*-Included both Sinhala-English & Tamil-English

Source : School Census 2025

Prepared by Statistics Branch of MOE

### 5. Summary Statistics of Government Schools by Teaching Staff - 2025

Category	Total Teaching Staff	% of Total	Male	Male %	Female	Female %	Category	Total Teaching Staff	% of Total	Male	Male %	Female	Female %
<b>All Govt. Schools</b>	<b>242,309</b>		<b>55,413</b>	<b>22.9</b>	<b>186,896</b>	<b>77.1</b>	<b>Language Medium of the Appointment of the Teaching Staff</b>						
<b>Level of School</b>							Sinhala Medium	153,456	63.3	33,098	21.6	120,358	78.4
National Schools	42,803	17.7	10,765	25.2	32,038	74.8	Tamil Medium	60,334	24.9	17,940	29.7	42,394	70.3
Provincial Schools	199,506	82.3	44,648	22.4	154,858	77.6	English Medium	6,234	2.6	1,088	17.5	5,146	82.5
<b>Type of School</b>							No Medium**	22,285	9.2	3,287	14.7	18,998	85.3
1AB Schools	82,250	33.9	21,207	25.8	61,043	74.2	<b>School by Local Government Area</b>						
1C Schools	65,746	27.1	15,408	23.4	50,338	76.6	MC Area	34,807	14.4	7,159	20.6	27,648	79.4
Type 2 Schools	59,642	24.6	12,889	21.6	46,753	78.4	UC Area	19,803	8.2	4,252	21.5	15,551	78.5
Type 3 Schools	34,671	14.3	5,909	17.0	28,762	83.0	PS Area	187,699	77.5	44,002	23.4	143,697	76.6
<b>School by Gender of the School</b>							<b>Teaching Staff by Qualification Classification</b>						
Boys Schools	12,392	5.1	3,484	28.1	8,908	71.9	Trained Graduate	114,034	47.1	27,085	23.8	86,949	76.2
Girls Schools	18,218	7.5	2,718	14.9	15,500	85.1	Untrained Graduate	40,816	16.8	9,926	24.3	30,890	75.7
Mixed Schools	211,699	87.4	49,211	23.2	162,488	76.8	Trained	85,296	35.2	17,839	20.9	67,457	79.1
<b>Ethnicity of the School Established</b>							Untrained	2,076	0.9	534	25.7	1,542	74.3
Sinhala Schools	175,028	72.2	36,069	20.6	138,959	79.4	Other	87	0.0	29	33.3	58	66.7
Tamil Schools	41,185	17.0	12,023	29.2	29,162	70.8	<b>Section of the Teaching of Major Subject/ Major Activity</b>						
Muslim Schools	26,096	10.8	7,321	28.1	18,775	71.9	Primary (1-5) Grades	74,161	30.6	9,581	12.9	64,580	87.1
<b>Plantation Estate Schools</b>							Secondary (6-11) Grades	116,445	48.1	27,322	23.5	89,123	76.5
Outside the estate	1,387	0.6	334	24.1	1,053	75.9	A/L (12-13) Grades	33,858	14.0	10,562	31.2	23,296	68.8
Inside the estate	12,807	5.2	3,590	28.0	9,217	72.0	No Specific Section*	17,845	7.4	7,948	44.5	9,897	55.5
							No Specific Section* - Academic staff involving in Administration and management activities and other activities such as Office works, Library, ICT lab, Student Counseling, English, English Literature, A/L English and A/L General English) and Other foreign language teachers are considered as No medium						

Source : School Census 2025

Prepared by Statistics Branch of MOE

## 6. Comparison of Basic Statistics of National and Provincial Schools -2025

Subject	All Govt. Schools	National Schools						Provincial Schools					
		Total	% of Total	No. of Males	Male %	No. of Females	Female %	Total	% of Total	No. of Males	Male %	No. of Females	Female %
<b>All Government Schools</b>													
No. of Schools	10,047	396	3.9					9,651	96.1				
No. of Students	3,747,544	825,644	22.0	418,874	50.7	406,770	49.3	2,921,900	78.0	1,437,226	49.2	1,484,674	50.8
No. of Teaching Staff	242,309	42,803	17.7	10,765	25.2	32,038	74.8	199,506	82.3	44,648	22.4	154,858	77.6
Grade 1 Admissions	266,281	26,567	10.0	13,892	52.3	12,675	47.7	239,714	90.0	121,695	50.8	118,019	49.2
<b>Schools by Type of School</b>													
<b>1AB Schools</b>													
No. of Schools	1,009	370	36.7					639	63.3				
No. of Students	1,549,882	805,683	52.0	408,718	50.7	396,965	49.3	744,199	48.0	340,414	45.7	403,785	54.3
No. of Teaching Staff	82,250	41,475	50.4	10,451	25.2	31,024	74.8	40,775	49.6	10,756	26.4	30,019	73.6
Grade 1 Admissions	45,859	25,649	55.9	13,376	52.2	12,273	47.8	20,210	44.1	8,855	43.8	11,355	56.2
<b>1C Schools</b>													
No. of Schools	1,962	25	1.3					1,937	98.7				
No. of Students	966,909	19,951	2.1	10,146	50.9	9,805	49.1	946,958	97.9	463,002	48.9	483,956	51.1
No. of Teaching Staff	65,746	1,322	2.0	310	23.4	1,012	76.6	64,424	98.0	15,098	23.4	49,326	76.6
Grade 1 Admissions	58,571	918	1.6	516	56.2	402	43.8	57,653	98.4	29,049	50.4	28,604	49.6
<b>Type 2 Schools</b>													
No. of Schools	3,244	1	0.0					3,243					
No. of Students	650,104	10	0.0	10	100.0	-	-	650,094	100.0	334,281	51.4	315,813	48.6
No. of Teaching Staff	59,642	6	0.0	4	66.7	2	33.3	59,636	100.0	12,885	21.6	46,751	78.4
Grade 1 Admissions	51,943	-	-	-	-	-	-	51,943	100.0	26,708	51.4	25,235	48.6
<b>Type 3 Schools</b>													
No. of Schools	3,832	-	-					3,832	100.0				
No. of Students	580,649	-	-	-	-	-	-	580,649	100.0	299,529	51.6	281,120	48.4
No. of Teaching Staff	34,671	-	-	-	-	-	-	34,671	100.0	5,909	17.0	28,762	83.0
Grade 1 Admissions	109,908	-	-	-	-	-	-	109,908	100.0	57,083	51.9	52,825	48.1

Source : School Census 2025

Prepared by Statistics Branch of MOE

### 7. Grade 1 Admission Related Statistics of Government Schools -2025

Subject	Schools Have Grade 1	Grd 1 Students	% of Total	Grd 1 Male Students	Male %	Grd 1 Female Students	Female %	NO Grade 1 Applications/ Admissions
<b>All Government Schools</b>	<b>9,059</b>	<b>266,281</b>		<b>135,587</b>	<b>50.9</b>	<b>130,694</b>	<b>49.1</b>	<b>132</b>
<b>Level of School</b>								
National Schools	184	26,567	10.0	13,892	52.3	12,675	47.7	0
Provincial Schools	8,875	239,714	90.0	121,695	50.8	118,019	49.2	132
<b>Type of School</b>								
1AB Schools	398	45,859	17.2	22,231	48.5	23,628	51.5	
1C Schools	1,605	58,571	22.0	29,565	50.5	29,006	49.5	3
Type 2 Schools	3,224	51,943	19.5	26,708	51.4	25,235	48.6	40
Type 3 Schools	3,832	109,908	41.3	57,083	51.9	52,825	48.1	89
<b>Language medium of study</b>								
Sinhala Medium*	6,100	189,642	71.2	96,778	51.0	92,864	49.0	94
Tamil Medium	2,959	76,639	28.8	38,809	50.6	37,830	49.4	38
<b>Ethnicity of the School Established</b>								
Sinhala Schools	6,098	188,878	70.9	96,472	51.1	92,406	48.9	94
Tamil Schools	2,108	41,362	15.5	21,219	51.3	20,143	48.7	33
Muslim Schools	853	36,041	13.5	17,896	49.7	18,145	50.3	5
<b>School by Local Government Area</b>								
MC/UC Area	913	57,853	21.7	29,378	50.8	28,475	49.2	6
PS Area	8,146	208,428	78.3	106,209	51.0	102,219	49.0	126
<b>Schools by Student Population</b>								
1-50 Students	1,638	8,289	3.1	4,401	53.1	3,888	46.9	114
51-100 Students	1,627	17,106	6.4	8,959	52.4	8,147	47.6	14
101-200 Students	2,077	32,863	12.3	16,919	51.5	15,944	48.5	4
201-500 Students	2,287	73,050	27.4	37,684	51.6	35,366	48.4	
501-1,000 Students	899	63,476	23.8	32,054	50.5	31,422	49.5	
More than 1,000 Students	531	71,497.0	26.9	35,570	49.8	35,927	50.2	

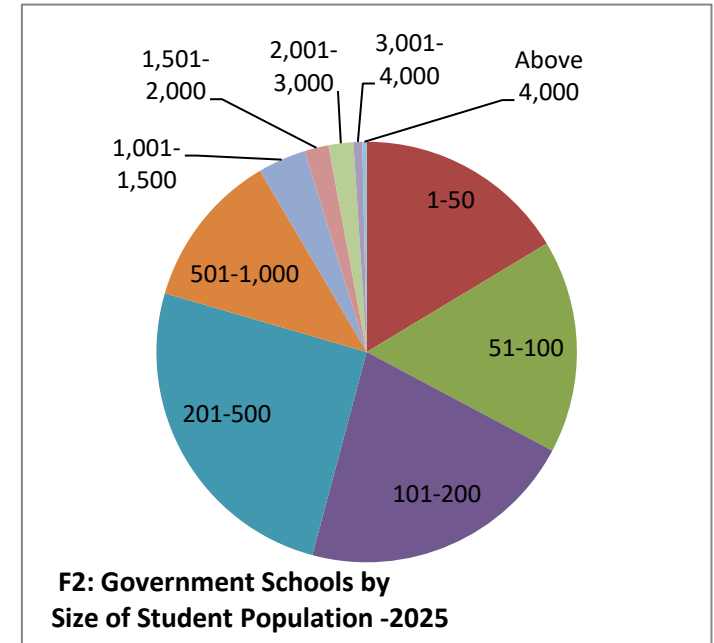
### 8. Government Schools by Size of Student Population -2025

Student Population	Level of School		Type of School				Total	%
	National	Provincial	1AB	1C	Type 2	Type 3		
1-50	1	1,644		4	186	1,455	<b>1,645</b>	16.4
51-100		1,648		39	654	955	<b>1,648</b>	16.4
101-200		2,149	10	248	1,270	621	<b>2,149</b>	21.4
201-500	14	2,532	98	950	981	517	<b>2,546</b>	25.3
501-1,000	66	1,142	275	567	121	245	<b>1,208</b>	12.0
1,001-1,500	66	306	209	107	22	34	<b>372</b>	3.7
1,501-2,000	63	123	143	31	8	4	<b>186</b>	1.9
2,001-3,000	103	89	174	15	2	1	<b>192</b>	1.9
3,001-4,000	53	15	67	1			<b>68</b>	0.7
Above 4,000	30	3	33				<b>33</b>	0.3

Student Population	Grade Span						Total
	Grd 1-5	Grd 1-9	Grd 1-11	Grd 1-13	Grd 6-11	Grd 6-13	
1-50	1,455	69	111	3	6	1	<b>1,645</b>
51-100	955	86	559	27	9	12	<b>1,648</b>
101-200	621	73	1,193	190	4	68	<b>2,149</b>
201-500	517	19	961	790	1	258	<b>2,546</b>
501-1,000	245	4	117	534		308	<b>1,208</b>
1,001-1,500	34	1	21	169		147	<b>372</b>
1,501-2,000	4		8	95		79	<b>186</b>
2,001-3,000	1		2	117		72	<b>192</b>
3,001-4,000				51		17	<b>68</b>
Above 4,000				28		5	<b>33</b>

Source : School Census 2025

Prepared by Statistics Branch of MOE



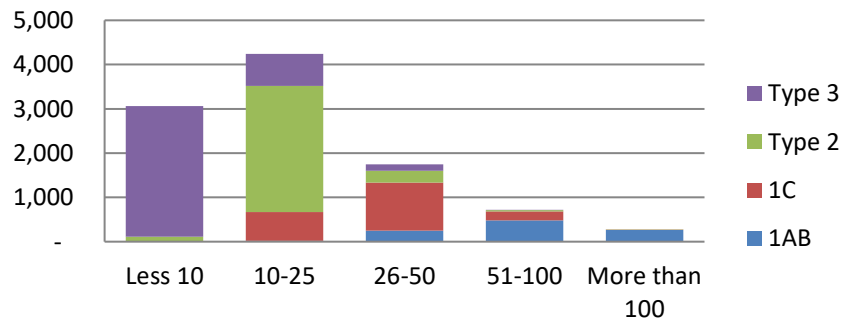
### 9. Government Schools by Size of Teaching Staff Population -2025

No of Teaching Staff	Level of School		Type of School				Total	%
	National	Provincial	1AB	1C	Type 2	Type 3		
Less 10	1	3,064		1	108	2,956	3,065	30.5
10-25	1	4,241	16	656	2,846	724	4,242	42.2
26-50	29	1,715	248	1,089	262	145	1,744	17.4
51-100	161	560	479	208	27	7	721	7.2
More than 100	204	71	266	8	1		275	2.7

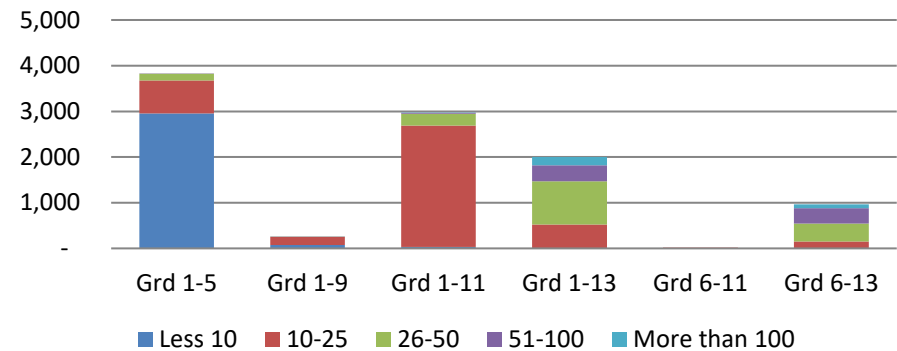
No of Teaching Staff	Grade Span						Total
	Grd 1-5	Grd 1-9	Grd 1-11	Grd 1-13	Grd 6-11	Grd 6-13	
Less 10	2,956	72	33	1	3		3,065
10-25	724	175	2,654	522	17	150	4,242
26-50	145	4	258	945		392	1,744
51-100	7	1	26	352		335	721
More than 100			1	184		90	275

Source : School Census 2025

**F3: Schools by Type of School and No. of Teaching Staff - 2025**



**F4: Schools by Grade Span of the School and No. of Teaching Staff -2025**

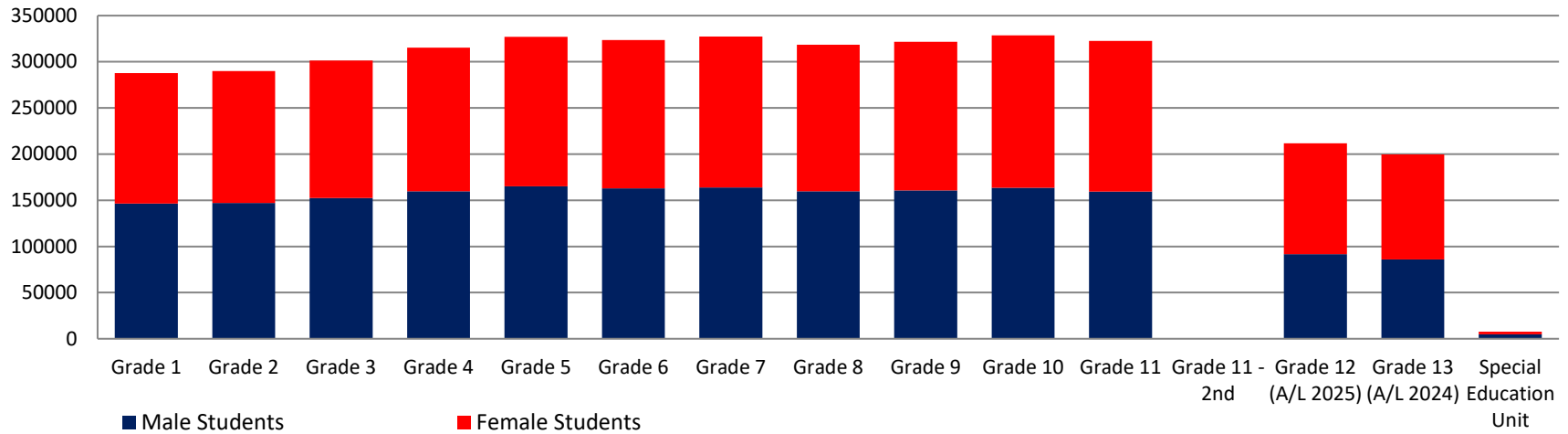


### 10. Grade-wise Students of Government Schools by Sex and Medium of Study -2025

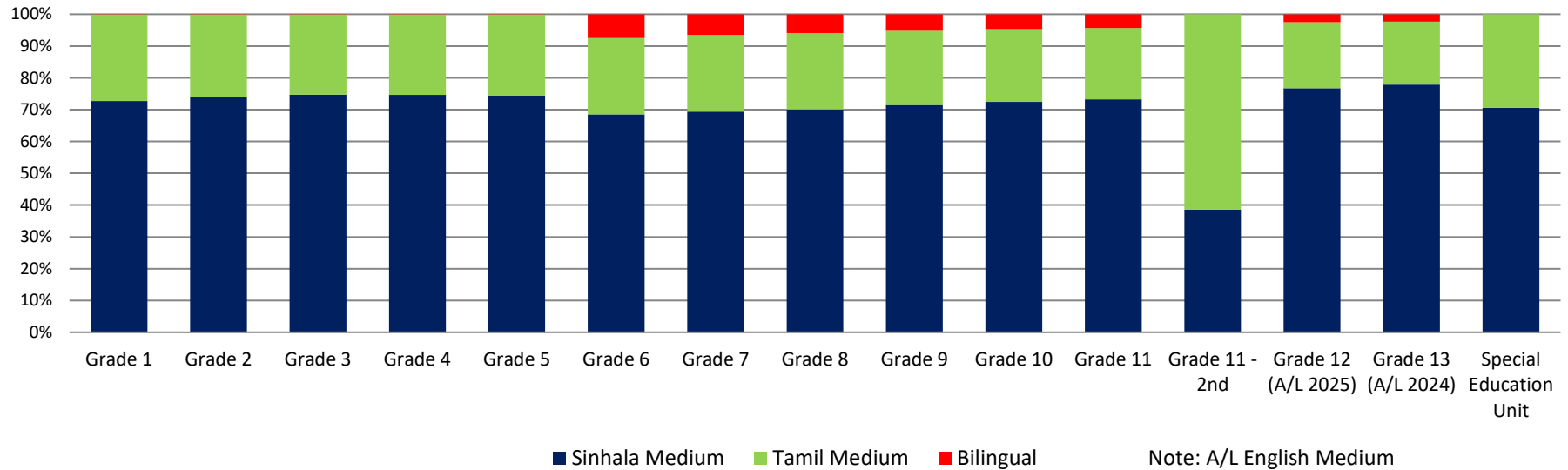
Grade	Total Students	Male Students	%	Female Students	%	Sinhala Medium	%	Tamil Medium	%	Bilingual Medium	%
Grade 1	266,281	135,587	50.9	130,694	49.1	189,525	71.2	76,639	28.8	117	0.0
Grade 2	284,771	144,478	50.7	140,293	49.3	205,733	72.2	78,879	27.7	159	0.1
Grade 3	287,060	145,673	50.7	141,387	49.3	208,851	72.8	78,045	27.2	164	0.1
Grade 4	289,046	146,548	50.7	142,498	49.3	214,817	74.3	74,118	25.6	111	0.0
Grade 5	300,671	151,740	50.5	148,931	49.5	224,774	74.8	75,802	25.2	95	0.0
<b>Primary Cycle (Grd 1-5)</b>	<b>1,427,829</b>	<b>724,026</b>	<b>50.7</b>	<b>703,803</b>	<b>49.3</b>	<b>1,043,700</b>	<b>73.1</b>	<b>383,483</b>	<b>26.9</b>	<b>646</b>	<b>0.0</b>
Grade 6	313,538	157,632	50.3	155,906	49.7	212,122	67.7	73,625	23.5	27,791	8.9
Grade 7	324,838	163,021	50.2	161,817	49.8	219,524	67.6	78,199	24.1	27,115	8.3
Grade 8	319,927	160,229	50.1	159,698	49.9	221,218	69.1	75,645	23.6	23,064	7.2
Grade 9	322,441	160,999	49.9	161,442	50.1	226,679	70.3	76,027	23.6	19,735	6.1
<b>Junior Secondary Cycle (Grd 6-9)</b>	<b>1,280,744</b>	<b>641,881</b>	<b>50.1</b>	<b>638,863</b>	<b>49.9</b>	<b>879,543</b>	<b>68.7</b>	<b>303,496</b>	<b>23.7</b>	<b>97,705</b>	<b>7.6</b>
Grade 10	311,098	155,261	49.9	155,837	50.1	221,493	71.2	72,581	23.3	17,024	5.5
Grade 11	311,115	154,552	49.7	156,563	50.3	226,447	72.8	68,810	22.1	15,858	5.1
<b>Senior Secondary O/L Cycle (Grd 10-11)</b>	<b>622,213</b>	<b>309,813</b>	<b>49.8</b>	<b>312,400</b>	<b>50.2</b>	<b>447,940</b>	<b>72.0</b>	<b>141,391</b>	<b>22.7</b>	<b>32,882</b>	<b>5.3</b>
Grade 12 (A/L 2026)	213,507	92,143	43.2	121,364	56.8	164,370	77.0	43,547	20.4	5,590	2.6
Grade 13 (A/L 2025)	195,818	83,640	42.7	112,178	57.3	151,308	77.3	39,193	20.0	5,317	2.7
<b>Senior Secondary Upper Cycle (A/L/ Grd 12-13)</b>	<b>409,325</b>	<b>175,783</b>	<b>42.9</b>	<b>233,542</b>	<b>57.1</b>	<b>315,678</b>	<b>77.1</b>	<b>82,740</b>	<b>20.2</b>	<b>10,907</b>	<b>2.7</b>
<b>Special Education Unit</b>	<b>7,433</b>	<b>4,597</b>	<b>61.8</b>	<b>2,836</b>	<b>38.2</b>	<b>5,178</b>	<b>69.7</b>	<b>2,254</b>	<b>30.3</b>	<b>1</b>	<b>0.0</b>
<b>All Students</b>	<b>3,747,544</b>	<b>1,856,100</b>	<b>49.5</b>	<b>1,891,444</b>	<b>50.5</b>	<b>2,692,039</b>	<b>71.8</b>	<b>913,364</b>	<b>24.4</b>	<b>142,141</b>	<b>3.8</b>

Source : School Census 2025

**F5: Students of Government Schools by Grade and Sex -2025**



**F6: Students of Government Schools by Grade and Medium -2025**



### 11. Teaching Staff of Govt. Schools by Qualification Classification -2025

Level of School	Trained Graduate	Graduate	Trained	Untrained	Other	Total Teaching Staff
National	21,038	4,490	17,010	257	8	42,803
Provincial	92,996	36,326	68,286	1,819	79	199,506
<b>Total</b>	<b>114,034</b>	<b>40,816</b>	<b>85,296</b>	<b>2,076</b>	<b>87</b>	<b>242,309</b>

Type of School	Trained Graduate	Graduate	Trained	Untrained	Other	Total Teaching Staff
1AB	43,364	12,182	26,224	459	21	82,250
1C	31,134	12,529	21,516	546	21	65,746
Type 2	24,801	11,678	22,515	624	24	59,642
Type 3	14,735	4,427	15,041	447	21	34,671
<b>Total</b>	<b>114,034</b>	<b>40,816</b>	<b>85,296</b>	<b>2,076</b>	<b>87</b>	<b>242,309</b>

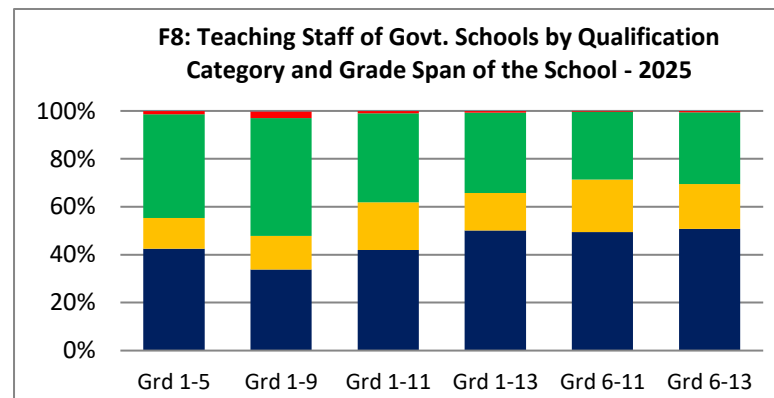
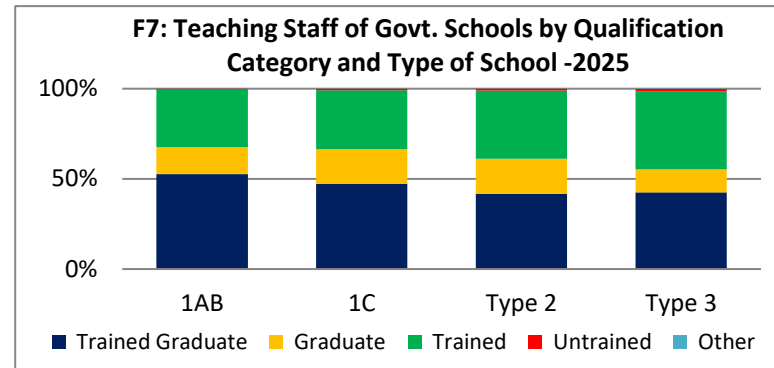
Grade Span	Trained Graduate	Graduate	Trained	Untrained	Other	Total Teaching Staff
Grd 1-5	14,735	4,427	15,041	447	21	34,671
Grd 1-9	1,023	425	1,486	85	4	3,023
Grd 1-11	23,647	11,195	20,954	538	20	56,354
Grd 1-13	47,791	14,876	32,003	693	30	95,393
Grd 6-11	131	58	75	1		265
Grd 6-13	26,707	9,835	15,737	312	12	52,603
<b>Total</b>	<b>114,034</b>	<b>40,816</b>	<b>85,296</b>	<b>2,076</b>	<b>87</b>	<b>242,309</b>

Source : School Census 2025

1AB - Schools having Science Stream classes in Advanced Level  
 1C - Schools having Advanced Level classes Other than Science Stream  
 Type 2 - School Having classes only up to Grade 11  
 Type 3 - School Having classes up to Grade 5/ Primary Schools

Prepared by Statistics Branch of MOE

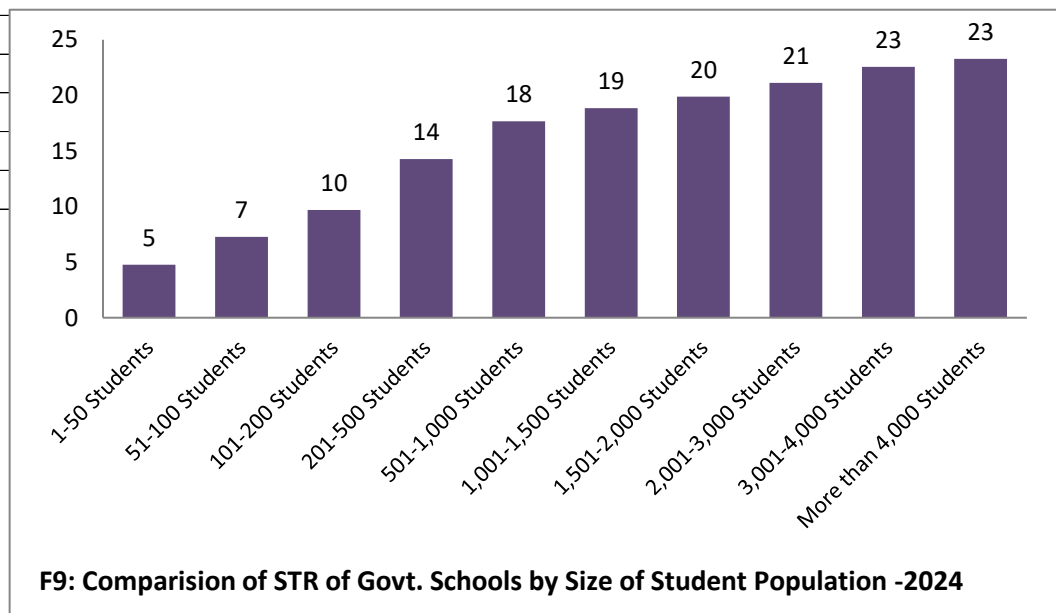
**Graduate** - Teachers/ Principals who have basic degree or above as highest education qualification but no any professional qualifications as mentioned above  
**Trained** - Teachers/ Principals who do not have basic degree or above as highest education qualification but have obtain above professional qualifications  
**Untrained** - Teachers who do not have neither basic degree or above as education qualification but have A/Ls nor any professional qualifications mentioned above but belongs  
**Other** - Teachers who do not have categorized above any category



**Trained Graduate**- Teachers/ Principals who have basic degree or above as highest education qualification and have obtain professional qualifications such as BEd or higher degree or NCOE Diploma or Teacher training certificate or diploma or above qualification for appointment/ teaching subject

## 12. Student Teacher Ratios (STRs) of Government Schools -2025

Category	No. of Schools	No. of Students	No. of Teaching Staff	STR		Category	No. of Schools	No. of Students	No. of Teaching Staff	STR
<b>All Government Schools</b>	<b>10,047</b>	<b>3,747,544</b>	<b>242,309</b>	<b>15</b>		<b>Schools by Student Population</b>				
<b>Level of School</b>						1-50 Students	1,645	49,189	10,324	5
National Schools	396	825,644	42,803	19		51-100 Students	1,648	122,891	16,923	7
Provincial Schools	9,651	2,921,900	199,506	15		101-200 Students	2,149	314,851	32,450	10
						201-500 Students	2,546	812,019	56,925	14
<b>Type of School</b>						501-1,000 Students	1,208	831,999	47,071	18
1AB Schools	1,009	1,549,882	82,250	19		1,001-1,500 Students	372	448,994	23,804	19
1C Schools	1,962	966,909	65,746	15		1,501-2,000 Students	186	318,966	16,041	20
Type 2 Schools	3,244	650,104	59,642	11		2,001-3,000 Students	192	459,537	21,744	21
Type 3 Schools	3,832	580,649	34,671	17		3,001-4,000 Students	68	230,518	10,214	23
						More than 4,000 Students	33	158,580	6,813	23
<b>Ethnicity of the School</b>										
Sinhala Schools	6,821	2,800,070	175,028	16						
Tamil Schools	2,283	528,027	41,185	13						
Muslim Schools	943	419,447	26,096	16						
<b>Plantation Estate Schools</b>										
Located outside the estate	30	23,594	1,387	17						
Located inside the estate	833	168,296	12,807	13						



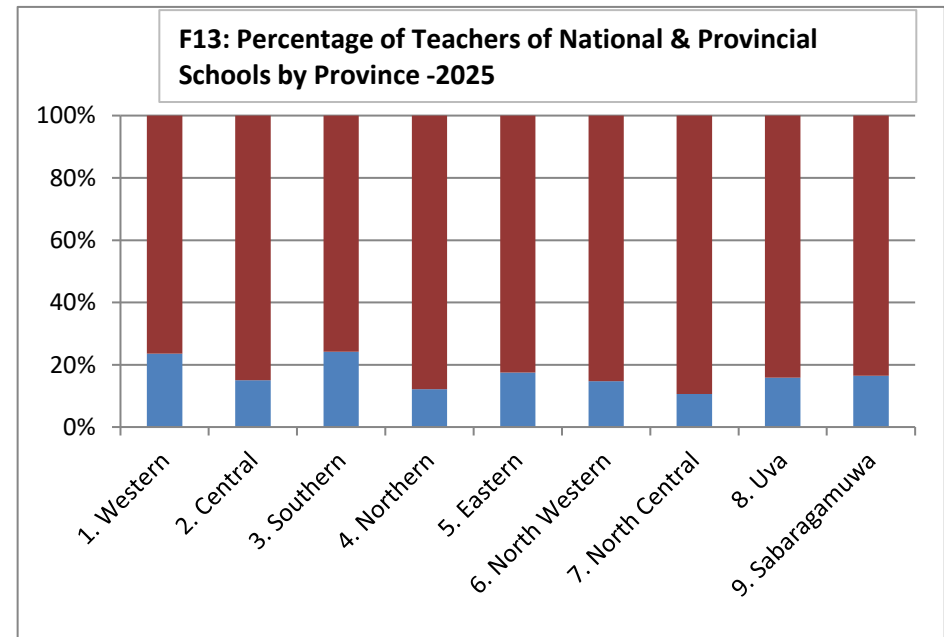
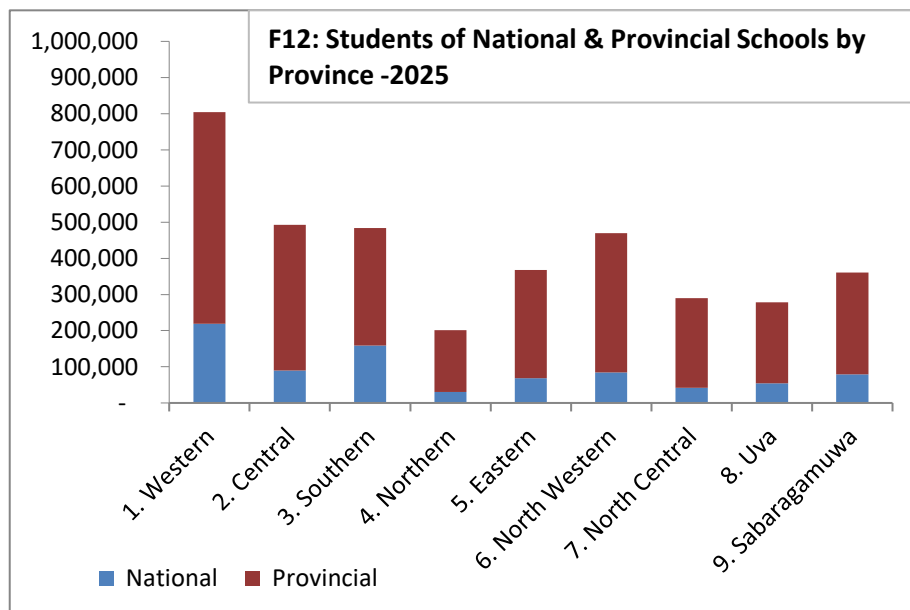
Source : School Census 2025

1AB - Schools having Science Stream classes in Advanced Level  
 1C - Schools having Advanced Level classes Other than Science Stream  
 Type 2 - School Having classes only up to Grade 11  
 Type 3 - School Having classes up to Grade 5/ Primary Schools

### 13. Basic Statistics of National and Provincial Schools by Province - 2025

Province	No. of Schools			No. of Students				No. of Teaching Staff			
	Total	National	Provincial	Total	National	% of Students in National Schools	Provincial	Total	National	% of Teachers in National Schools	Provincial
<b>1. Western</b>	1,338	79	1,259	803,921	219,428	27.3	584,493	45,318	10,683	23.6	34,635
<b>2. Central</b>	1,507	56	1,451	493,000	89,667	18.2	403,333	33,060	4,969	15.0	28,091
<b>3. Southern</b>	1,093	70	1,023	483,387	159,096	32.9	324,291	30,722	7,432	24.2	23,290
<b>4. Northern</b>	964	24	940	201,485	30,671	15.2	170,814	18,108	2,194	12.1	15,914
<b>5. Eastern</b>	1,129	42	1,087	367,858	68,121	18.5	299,737	23,203	4,072	17.5	19,131
<b>6. North Western</b>	1,239	39	1,200	469,667	84,218	17.9	385,449	30,001	4,405	14.7	25,596
<b>7. North Central</b>	805	17	788	289,467	41,652	14.4	247,815	17,229	1,827	10.6	15,402
<b>8. Uva</b>	892	38	854	278,013	54,052	19.4	223,961	20,188	3,195	15.8	16,993
<b>9. Sabaragamuwa</b>	1,080	31	1,049	360,746	78,739	21.8	282,007	24,480	4,026	16.4	20,454
<b>Total</b>	<b>10,047</b>	<b>396</b>	<b>9,651</b>	<b>3,747,544</b>	<b>825,644</b>	<b>22.0</b>	<b>2,921,900</b>	<b>242,309</b>	<b>42,803</b>	<b>17.7</b>	<b>199,506</b>

Source : School Census 2025



### 14. Basic Statistics of National and Provincial Schools by District - 2025

District	No. of Schools			No. of Students				No. of Teaching Staff			
	Total	National	Provincial	Total	National	% of Students in National Schools	Provincial	Total	National	% of Teachers in National Schools	Provincial
11. Colombo	391	39	352	305,506	117,955	38.6	187,551	17,078	5,682	33.3	11,396
12. Gampaha	533	20	513	297,307	52,069	17.5	245,238	16,585	2,684	16.2	13,901
13. Kalutara	414	20	394	201,108	49,404	24.6	151,704	11,655	2,317	19.9	9,338
21. Kandy	647	36	611	252,916	58,059	23.0	194,857	16,709	3,217	19.3	13,492
22. Matale	310	12	298	96,813	22,569	23.3	74,244	6,477	1,210	18.7	5,267
23. Nuwara Eliya	550	8	542	143,271	9,039	6.3	134,232	9,874	542	5.5	9,332
31. Galle	422	30	392	198,627	75,405	38.0	123,222	12,032	3,350	27.8	8,682
32. Matara	353	23	330	150,260	49,952	33.2	100,308	10,293	2,494	24.2	7,799
33. Hambantota	318	17	301	134,500	33,739	25.1	100,761	8,397	1,588	18.9	6,809
41. Jaffna	438	8	430	93,167	13,641	14.6	79,526	8,688	941	10.8	7,747
42. Mannar	132	5	127	24,958	5,243	21.0	19,715	2,343	418	17.8	1,925
43. Vavuniya	166	5	161	33,461	6,664	19.9	26,797	2,825	434	15.4	2,391
44. Mullaitivu	124	3	121	23,965	2,282	9.5	21,683	2,112	171	8.1	1,941
45. Kilinochchi	104	3	101	25,934	2,841	11.0	23,093	2,140	230	10.7	1,910
51. Batticaloa	368	13	355	117,172	20,310	17.3	96,862	7,327	1,246	17.0	6,081
52. Ampara	444	17	427	157,205	29,427	18.7	127,778	10,248	1,817	17.7	8,431
53. Trincomalee	317	12	305	93,481	18,384	19.7	75,097	5,628	1,009	17.9	4,619
61. Kurunegala	868	31	837	315,282	65,841	20.9	249,441	20,713	3,501	16.9	17,212
62. Puttalam	371	8	363	154,385	18,377	11.9	136,008	9,288	904	9.7	8,384
71. Anuradhapura	556	8	548	200,193	21,660	10.8	178,533	12,320	1,008	8.2	11,312
72. Polonnaruwa	249	9	240	89,274	19,992	22.4	69,282	4,909	819	16.7	4,090
81. Badulla	601	27	574	167,138	33,367	20.0	133,771	13,561	2,224	16.4	11,337
82. Moneragala	291	11	280	110,875	20,685	18.7	90,190	6,627	971	14.7	5,656
91. Ratnapura	582	16	566	211,988	39,226	18.5	172,762	13,141	1,930	14.7	11,211
92. Kegalle	498	15	483	148,758	39,513	26.6	109,245	11,339	2,096	18.5	9,243
<b>Total</b>	<b>10,047</b>	<b>396</b>	<b>9,651</b>	<b>3,747,544</b>	<b>825,644</b>	<b>22.0</b>	<b>2,921,900</b>	<b>242,309</b>	<b>42,803</b>	<b>17.7</b>	<b>199,506</b>

Source : School Census 2025

Prepared by Statistics Branch of MOE

### 15. Basic Statistics of Government Schools by Zones -2025

District	Education Zone	All	Schools by Level		Schools by Type				Student Population (Size)					
			National	Provincial	1AB	1C	Type 2	Type 3	1--50	51-100	101-200	201- 500	501-1,000	Above 1,000
11. Colombo	Colombo	122	21	101	31	39	39	13	2	18	12	31	26	33
	Homagama	99	4	95	8	15	35	41	11	11	17	27	15	18
	Piliyandala	85	5	80	16	16	25	28	11	11	15	21	12	15
	Sri Jayawardanapura	85	9	76	21	15	24	25	6	6	8	30	12	23
12. Gampaha	Gampaha	145	7	138	19	26	50	50	11	16	35	34	23	26
	Kelaniya	114	6	108	18	29	32	35	4	9	19	30	31	21
	Minuwangoda	157	3	154	10	27	51	69	6	31	42	39	21	18
	Negombo	117	4	113	19	26	41	31	4	15	22	33	27	16
13. Kalutara	Horana	137	5	132	13	30	37	57	20	22	23	36	19	17
	Kalutara	149	12	137	31	26	59	33	8	14	32	33	28	34
	Matugama	128	3	125	8	19	47	54	24	24	38	21	14	7
21. Kandy	Denuwara	87	4	83	8	20	32	27	9	20	18	23	13	4
	Gampola	141	6	135	9	30	53	49	24	20	42	26	16	13
	Kandy	117	9	108	24	29	38	26	14	20	23	23	15	22
	Katugastota	119	10	109	7	36	32	44	18	15	29	35	15	7
	Teldeniya	96	3	93	3	19	30	44	31	9	16	25	10	5
	Wattegama	86	4	82	9	26	33	18	6	15	18	28	11	8
22. Matale	Galewela	107	2	105	5	22	31	49	21	14	20	36	11	5
	Matale	119	9	110	13	24	49	33	20	17	33	24	13	12
	Naula	39	1	38	1	8	17	13	7	14	8	7	2	1
	Wilgamuwa	45		45	1	7	8	29	15	10	3	12	4	1
23. Nuwara Eliya	Hanguranketha	68	2	66	6	10	24	28	11	14	14	19	5	5
	Hatton	150	1	149	11	30	41	68	21	34	25	47	16	7
	Kotmale	88	3	85	8	17	18	45	17	19	20	22	7	3
	Nuwara Eliya	156	1	155	8	22	50	76	29	43	25	35	19	5
	Walapane	89	1	88	4	15	14	56	29	16	14	18	10	2

District	Education Zone	All	Schools by Level		Schools by Type				Student Population (Size)					
			National	Provincial	1AB	1C	Type 2	Type 3	1--50	51-100	101-200	201- 500	501-1,000	Above 1,000
31. Galle	Ambalangoda	81	5	76	12	14	19	36	6	16	19	19	12	9
	Elpitiya	120	3	117	10	21	33	56	18	23	32	23	17	7
	Galle	143	19	124	28	35	29	51	19	22	27	27	16	32
	Udugama	78	3	75	6	16	18	38	10	19	16	20	7	6
32. Matara	Akuressa	74	2	72	4	21	27	22	11	12	14	22	9	6
	Deniyaya (Morawaka)	77	4	73	4	20	24	29	9	9	20	20	13	6
	Matara	111	13	98	21	29	27	34	9	16	27	24	18	17
	Mulatiyana (Hakmana)	91	4	87	9	17	29	36	15	23	13	22	11	7
33. Hambantota	Hambantota	121	7	114	14	29	48	30	3	14	27	45	15	17
	Tangalle	106	6	100	11	23	40	32	15	22	30	19	9	11
	Walasmulla	91	4	87	10	22	28	31	7	12	26	25	13	8
41. Jaffna	Islands	63		63	4	8	20	31	18	23	15	6	1	-
	Jaffna	97	4	93	14	13	37	33	18	22	23	20	6	8
	Thenmarachchi	58	1	57	6	6	19	27	16	13	18	7	3	1
	Vadamarachchi	80	2	78	11	10	29	30	14	16	24	18	5	3
	Valikamam	140	1	139	15	13	36	76	33	43	30	21	10	3
42. Mannar	Madhu	50		50	4	9	11	26	20	10	14	6		-
	Mannar	82	5	77	11	16	24	31	20	13	15	25	6	3
43. Vavuniya	Vavuniya North	70		70	4	8	17	41	38	11	11	7	3	-
	Vavuniya South	96	5	91	11	17	22	46	32	9	19	22	9	5
44. Mullaitivu	Mullaitivu	66	2	64	8	11	23	24	12	11	12	20	10	1
	Thunukkai	58	1	57	7	4	12	35	25	11	12	8	2	-
45. Kilinochchi	Kilinochchi North	38	1	37	3	5	12	18	12	7	8	9	2	-
	Kilinochchi South	66	2	64	10	11	23	22	9	11	11	23	10	2
51. Batticaloa	Batticaloa	66	4	62	11	11	23	21	12	7	13	22	6	6
	Batticaloa Central	78	6	72	11	13	15	39	5	12	15	16	22	8
	Batticaloa West	68		68	5	13	16	34	17	10	17	19	5	-
	Kalkudah	85	1	84	9	11	26	39	19	11	17	25	10	3

District	Education Zone	All	Schools by Level		Schools by Type				Student Population (Size)					
			National	Provincial	1AB	1C	Type 2	Type 3	1--50	51-100	101-200	201- 500	501-1,000	Above 1,000
51. Batticaloa	Paddrippu	70	2	68	9	16	15	30	14	7	11	25	11	2
52. Ampara	Akkaraipattu	72	3	69	9	5	21	37	10	8	10	25	13	6
	Ampara	103	3	100	6	20	45	32	10	14	36	28	7	8
	Dehiattakandiya	48	1	47	3	5	19	21	4	8	16	15	2	3
	Kalmunai	65	4	61	10	14	19	22	2	8	15	15	16	9
	Mahaoya	40	1	39	2	6	13	19	11	2	11	11	4	1
	Sammanthurai	71	3	68	6	14	23	28	9	8	19	21	8	6
	Thirukkovil	46	2	44	6	6	10	24	8	8	9	14	5	2
53. Trincomalee	Kantale	44	1	43	5	9	16	14	4	6	8	19	5	2
	Kinniya	67	3	64	5	18	16	28	6	10	14	23	10	4
	Muttur	88	1	87	6	15	25	42	12	20	17	32	5	2
	Trincomalee	83	6	77	11	23	23	26	15	11	12	33	5	7
	Trincomalee North	35	1	34	2	4	15	14	7	12	6	8	2	-
61. Kurunegala	Giriulla	137	8	129	13	27	39	58	21	28	32	28	15	13
	Ibbagamuwa	108	2	106	10	21	28	49	12	19	26	27	14	10
	Kuliyapitiya	164	5	159	11	43	49	61	19	32	46	39	17	11
	Kurunegala	118	8	110	27	21	39	31	12	19	21	30	14	22
	Maho	187	5	182	9	39	65	74	33	32	38	54	21	9
	Nikaweratiya	154	3	151	10	32	55	57	37	30	33	37	12	5
62. Puttalam	Chilaw	158	5	153	18	30	70	40	13	24	35	46	22	18
	Puttalam	213	3	210	15	56	84	58	13	21	45	81	35	18
71. Anuradhapura	Anuradhapura	136	3	133	12	30	45	49	25	14	24	40	21	12
	Galenbindunuwewa	94		94	4	19	24	47	28	11	18	21	13	3
	Kebithigollewa	125	1	124	6	12	42	65	33	22	24	31	11	4
	Kekirawa	130	2	128	8	32	26	64	24	23	22	35	20	6
	Thambuttegama	71	2	69	7	13	24	27	4	5	17	23	12	10
72. Polonnaruwa	Dimbulagala	100	1	99	6	19	14	61	17	27	26	15	12	3
	Hingurakgoda	96	5	91	9	9	26	52	10	18	20	28	12	8

District	Education Zone	All	Schools by Level		Schools by Type				Student Population (Size)					
			National	Provincial	1AB	1C	Type 2	Type 3	1--50	51-100	101-200	201- 500	501-1,000	Above 1,000
72. Polonnaruwa	Polonnaruwa	53	3	50	9	12	11	21	5	7	8	14	12	7
81. Badulla	Badulla	112	6	106	15	26	34	37	27	18	27	21	11	8
	Bandarawela	140	10	130	13	26	39	62	35	31	25	31	9	9
	Mahiyanganaya	81	2	79	4	22	26	29	10	9	16	28	11	7
	Passara	88	2	86	3	15	28	42	27	19	22	12	6	2
	Viyaluwa	70	3	67	2	16	25	27	19	12	16	17	6	-
	Welimada	110	4	106	8	29	40	33	21	11	25	36	13	4
82. Moneragala	Bibile	82	3	79	10	16	31	25	9	13	17	26	11	6
	Moneragala	109	4	105	10	24	42	33	20	12	25	32	13	7
	Thanamalwila	43	2	41	8	7	15	13		4	6	18	12	3
	Wellawaya	57	2	55	7	9	24	17	4	6	14	13	12	8
91. Ratnapura	Balangoda	131	2	129	11	17	66	37	27	23	29	29	13	10
	Embilipitiya	125	4	121	15	18	53	39	22	9	20	33	23	18
	Nivitigala	141	2	139	7	21	62	51	29	31	34	30	11	6
	Ratnapura	185	8	177	18	38	76	53	36	23	37	46	19	24
92. Kegalle	Dehiowita	212	4	208	15	35	86	76	57	33	60	41	11	10
	Kegalle	153	7	146	14	33	49	57	37	32	34	27	11	12
	Mawanella	133	4	129	11	31	50	41	26	23	27	33	15	9

### 16. Comparison of Basic Statistics of National and Provincial Schools by Zones - 2025

District	Education Zone	No. of Schools			No. of Students				No. of Teaching Staff			
		Total	National	Provincial	Total	National	% of Students in National Schools	Provincial	Total	National	% of Teachers in National Schools	Provincial
11. Colombo	Colombo	122	21	101	126,149	73,144	58.0	53,005	6,803	3,360	49.4	3,443
	Homagama	99	4	95	57,375	10,323	18.0	47,052	3,056	505	16.5	2,551
	Piliyandala	85	5	80	48,433	12,365	25.5	36,068	3,119	630	20.2	2,489
	Sri Jayawardanapura	85	9	76	73,549	22,123	30.1	51,426	4,100	1,187	29.0	2,913
12. Gampaha	Gampaha	145	7	138	90,835	18,743	20.6	72,092	5,056	974	19.3	4,082
	Kelaniya	114	6	108	77,376	16,383	21.2	60,993	4,194	805	19.2	3,389
	Minuwangoda	157	3	154	65,673	6,350	9.7	59,323	3,683	379	10.3	3,304
	Negombo	117	4	113	63,423	10,593	16.7	52,830	3,652	526	14.4	3,126
13. Kalutara	Horana	137	5	132	62,730	14,873	23.7	47,857	3,762	709	18.8	3,053
	Kalutara	149	12	137	96,324	25,588	26.6	70,736	5,146	1,202	23.4	3,944
	Matugama	128	3	125	42,054	8,943	21.3	33,111	2,747	406	14.8	2,341
21. Kandy	Denuwara	87	4	83	26,640	3,684	13.8	22,956	2,103	298	14.2	1,805
	Gampola	141	6	135	48,064	9,362	19.5	38,702	2,968	529	17.8	2,439
	Kandy	117	9	108	79,142	24,341	30.8	54,801	5,111	1,273	24.9	3,838
	Katugastota	119	10	109	39,631	12,600	31.8	27,031	2,629	651	24.8	1,978
	Teldeniya	96	3	93	25,410	3,982	15.7	21,428	1,518	207	13.6	1,311
	Wathagama	86	4	82	33,850	4,090	12.1	29,760	2,361	259	11.0	2,102
22. Matale	Galewela	107	2	105	33,386	3,397	10.2	29,989	1,995	187	9.4	1,808
	Matale	119	9	110	46,135	17,368	37.6	28,767	3,147	946	30.1	2,201
	Naula	39	1	38	7,640	1,804	23.6	5,836	680	77	11.3	603
	Wilgamuwa	45		45	9,652		-	9,652	655		-	655
23. Nuwara Eliya	Hanguranketha	68	2	66	21,161	3,427	16.2	17,734	1,331	173	13.0	1,158
	Hatton	150	1	149	43,386	1,177	2.7	42,209	3,030	80	2.6	2,950
	Kotmale	88	3	85	19,698	2,115	10.7	17,583	1,424	149	10.5	1,275
	Nuwara Eliya	156	1	155	39,228	706	1.8	38,522	2,774	67	2.4	2,707
	Walapane	89	1	88	19,977	1,614	8.1	18,363	1,334	73	5.5	1,261

District	Education Zone	No. of Schools			No. of Students				No. of Teaching Staff			
		Total	National	Provincial	Total	National	% of Students in National Schools	Provincial	Total	National	% of Teachers in National Schools	Provincial
31. Galle	Ambalangoda	81	5	76	40,770	13,062	32.0	27,708	2,280	576	25.3	1,704
	Elpitiya	120	3	117	39,082	8,643	22.1	30,439	2,600	336	12.9	2,264
	Galle	143	19	124	95,515	49,390	51.7	46,125	5,491	2,213	40.3	3,278
	Udugama	78	3	75	23,260	4,310	18.5	18,950	1,661	225	13.5	1,436
32. Matara	Akuressa	74	2	72	27,712	3,913	14.1	23,799	1,897	190	10.0	1,707
	Deniyaya (Morawaka)	77	4	73	30,567	8,909	29.1	21,658	2,024	403	19.9	1,621
	Matara	111	13	98	63,154	30,874	48.9	32,280	4,133	1,515	36.7	2,618
	Mulatiyana (Hakmana)	91	4	87	28,827	6,256	21.7	22,571	2,239	386	17.2	1,853
33. Hambantota	Hambantota	121	7	114	61,173	14,808	24.2	46,365	3,357	660	19.7	2,697
	Tangalle	106	6	100	34,847	7,889	22.6	26,958	2,556	448	17.5	2,108
	Walasmulla	91	4	87	38,480	11,042	28.7	27,438	2,484	480	19.3	2,004
41. Jaffna	Islands	63		63	6,295		-	6,295	802		-	802
	Jaffna	97	4	93	31,311	8,643	27.6	22,668	2,747	517	18.8	2,230
	Thenmarachchi	58	1	57	10,335	1,811	17.5	8,524	1,045	129	12.3	916
	Vadamarachchi	80	2	78	17,115	2,358	13.8	14,757	1,654	197	11.9	1,457
	Valikamam	140	1	139	28,111	829	2.9	27,282	2,440	98	4.0	2,342
42. Mannar	Madhu	50		50	5,254		-	5,254	642		-	642
	Mannar	82	5	77	19,704	5,243	26.6	14,461	1,701	418	24.6	1,283
43. Vavuniya	Vavuniya North	70		70	7,114		-	7,114	802		-	802
	Vavuniya South	96	5	91	26,347	6,664	25.3	19,683	2,023	434	21.5	1,589
44. Mullaitivu	Mullaitivu	66	2	64	17,247	1,686	9.8	15,561	1,364	112	8.2	1,252
	Thunukkai	58	1	57	6,718	596	8.9	6,122	748	59	7.9	689
45. Kilinochchi	Kilinochchi North	38	1	37	6,412	674	10.5	5,738	638	83	13.0	555
	Kilinochchi South	66	2	64	19,522	2,167	11.1	17,355	1,502	147	9.8	1,355
51. Batticaloa	Batticaloa	66	4	62	24,249	7,433	30.7	16,816	1,732	422	24.4	1,310
	Batticaloa Central	78	6	72	36,018	8,253	22.9	27,765	1,899	530	27.9	1,369
	Batticaloa West	68		68	12,887		-	12,887	918		-	918
	Kalkudah	85	1	84	23,499	1,064	4.5	22,435	1,286	58	4.5	1,228
	Paddrippu	70	2	68	20,011	3,560	17.8	16,451	1,464	236	16.1	1,228

District	Education Zone	No. of Schools			No. of Students				No. of Teaching Staff			
		Total	National	Provincial	Total	National	% of Students in National Schools	Provincial	Total	National	% of Teachers in National Schools	Provincial
52. Ampara	Akkaraipattu	72	3	69	28,184	3,713	13.2	24,471	1,641	287	17.5	1,354
	Ampara	103	3	100	33,224	5,583	16.8	27,641	2,083	272	13.1	1,811
	Dehiattakandiya	48	1	47	13,722	2,637	19.2	11,085	781	113	14.5	668
	Kalmunai	65	4	61	36,957	10,058	27.2	26,899	2,456	586	23.9	1,870
	Mahaoya	40	1	39	9,395	998	10.6	8,397	609	67	11.0	542
	Sammanthurai	71	3	68	24,118	4,112	17.0	20,006	1,757	315	17.9	1,442
	Thirukkovil	46	2	44	12,113	2,326	19.2	9,787	949	177	18.7	772
53. Trincomalee	Kantale	44	1	43	14,834	2,835	19.1	11,999	854	113	13.2	741
	Kinniya	67	3	64	25,215	5,671	22.5	19,544	1,543	334	21.6	1,209
	Muttur	88	1	87	20,006	1,122	5.6	18,884	1,200	95	7.9	1,105
	Trincomalee	83	6	77	27,815	8,160	29.3	19,655	1,592	443	27.8	1,149
	Trincomalee North	35	1	34	5,611	596	10.6	5,015	439	24	5.5	415
61. Kurunegala	Giriulla	137	8	129	51,854	17,638	34.0	34,216	3,387	970	28.6	2,417
	Ibbagamuwa	108	2	106	39,412	4,104	10.4	35,308	2,478	220	8.9	2,258
	Kuliyapitiya	164	5	159	53,623	10,315	19.2	43,308	3,430	488	14.2	2,942
	Kurunegala	118	8	110	75,923	18,507	24.4	57,416	4,539	1,022	22.5	3,517
	Maho	187	5	182	54,027	8,363	15.5	45,664	3,749	447	11.9	3,302
	Nikaweratiya	154	3	151	40,443	6,914	17.1	33,529	3,130	354	11.3	2,776
62. Puttalam	Chilaw	158	5	153	69,385	13,774	19.9	55,611	3,970	621	15.6	3,349
	Puttalam	213	3	210	85,000	4,603	5.4	80,397	5,318	283	5.3	5,035
71. Anuradhapura	Anuradhapura	136	3	133	65,079	9,304	14.3	55,775	3,915	455	11.6	3,460
	Galenbindunuwewa	94		94	26,051		-	26,051	1,760		-	1,760
	Kebithigollewa	125	1	124	29,940	1,876	6.3	28,064	1,957	87	4.4	1,870
	Kekirawa	130	2	128	42,191	5,152	12.2	37,039	2,686	207	7.7	2,479
	Thambuttegama	71	2	69	36,932	5,328	14.4	31,604	2,002	259	12.9	1,743
72. Polonnaruwa	Dimbulagala	100	1	99	24,671	1,913	7.8	22,758	1,470	83	5.6	1,387
	Hingurakgoda	96	5	91	35,752	8,578	24.0	27,174	1,919	401	20.9	1,518
	Polonnaruwa	53	3	50	28,851	9,501	32.9	19,350	1,520	335	22.0	1,185
81. Badulla	Badulla	112	6	106	35,737	10,755	30.1	24,982	3,268	703	21.5	2,565

District	Education Zone	No. of Schools			No. of Students				No. of Teaching Staff			
		Total	National	Provincial	Total	National	% of Students in National Schools	Provincial	Total	National	% of Teachers in National Schools	Provincial
81. Badulla	Bandarawela	140	10	130	40,343	11,718	29.0	28,625	3,474	836	24.1	2,638
	Mahiyanganaya	81	2	79	29,653	3,237	10.9	26,416	1,653	151	9.1	1,502
	Passara	88	2	86	15,649	2,064	13.2	13,585	1,393	142	10.2	1,251
	Viyaluwa	70	3	67	12,973	1,818	14.0	11,155	1,176	131	11.1	1,045
	Welimada	110	4	106	32,783	3,775	11.5	29,008	2,597	261	10.1	2,336
82. Moneragala	Bibile	82	3	79	27,360	4,507	16.5	22,853	1,728	208	12.0	1,520
	Moneragala	109	4	105	35,499	7,995	22.5	27,504	2,360	396	16.8	1,964
	Thanamalwila	43	2	41	20,809	3,201	15.4	17,608	1,034	148	14.3	886
	Wellawaya	57	2	55	27,207	4,982	18.3	22,225	1,505	219	14.6	1,286
91. Ratnapura	Balangoda	131	2	129	38,948	3,727	9.6	35,221	2,721	191	7.0	2,530
	Embilipitiya	125	4	121	57,471	9,611	16.7	47,860	3,200	450	14.1	2,750
	Nivitigala	141	2	139	33,653	3,333	9.9	30,320	2,305	180	7.8	2,125
	Ratnapura	185	8	177	81,916	22,555	27.5	59,361	4,915	1,109	22.6	3,806
92. Kegalle	Dehiowita	212	4	208	47,247	6,986	14.8	40,261	3,754	394	10.5	3,360
	Kegalle	153	7	146	54,363	21,342	39.3	33,021	4,166	1,124	27.0	3,042
	Mawanella	133	4	129	47,148	11,185	23.7	35,963	3,419	578	16.9	2,841



# **School Census - 2025**

## **Summary Statistics of Other Schools (Govt. Assisted Private Schools, Govt. Assisted Special Schools and Piriven)**





## 17. Basic Statistics of Govt. Assisted Private Schools by Province and District -2025

Province/ District	Type of School			Total Schools	Students						Teaching Staff		
	1AB	1C	Type 2		Male	Female	Total	Sinhala Medium	Tamil Medium	English Medium	Male	Female	Total
<b>1. Western</b>	<b>41</b>	<b>10</b>	<b>8</b>	<b>59</b>	<b>51,759</b>	<b>47,969</b>	<b>99,728</b>	<b>58,075</b>	<b>6,151</b>	<b>35,502</b>	<b>1,086</b>	<b>4,915</b>	<b>6,001</b>
11. Colombo	20	6	4	30	28,649	26,734	55,383	28,253	6,151	20,979	597	3,010	3,607
12. Gampaha	16	2	3	21	19,670	15,908	35,578	24,299	-	11,279	413	1,470	1,883
13. Kalutara	5	2	1	8	3,440	5,327	8,767	5,523	-	3,244	76	435	511
<b>2. Central</b>	<b>6</b>	<b>6</b>	<b>3</b>	<b>15</b>	<b>8,718</b>	<b>8,249</b>	<b>16,967</b>	<b>10,260</b>	<b>2,340</b>	<b>4,367</b>	<b>189</b>	<b>908</b>	<b>1,097</b>
21. Kandy	6	2	3	11	6,361	5,589	11,950	7,193	529	4,228	140	686	826
22. Matale		2		2	915	1,548	2,463	2,024	300	139	20	124	144
23. Nuwara Eliya		2		2	1,442	1,112	2,554	1,043	1,511	-	29	98	127
<b>3. Southern</b>	<b>3</b>	<b>5</b>	<b>1</b>	<b>9</b>	<b>2,008</b>	<b>4,977</b>	<b>6,985</b>	<b>6,289</b>	<b>-</b>	<b>696</b>	<b>55</b>	<b>239</b>	<b>294</b>
31. Galle	1	1		2	113	292	405	330	-	75	7	22	29
32. Matara	2	3	1	6	1,798	4,603	6,401	5,780	-	621	44	200	244
33. Hambantota		1		1	97	82	179	179	-	-	4	17	21
<b>4. Northern</b>	<b>5</b>			<b>5</b>	<b>4,161</b>	<b>3,345</b>	<b>7,506</b>	<b>-</b>	<b>6,285</b>	<b>1,221</b>	<b>180</b>	<b>266</b>	<b>446</b>
41. Jaffna	5			5	4,161	3,345	7,506	-	6,285	1,221	180	266	446
<b>6. North Western</b>	<b>1</b>		<b>1</b>	<b>2</b>	<b>686</b>	<b>926</b>	<b>1,612</b>	<b>707</b>	<b>-</b>	<b>905</b>	<b>5</b>	<b>96</b>	<b>101</b>
61. Kurunegala	1		1	2	686	926	1,612	707	-	905	5	96	101
<b>7. North Central</b>	<b>1</b>			<b>1</b>	<b>710</b>	<b>671</b>	<b>1,381</b>	<b>49</b>	<b>-</b>	<b>1,332</b>	<b>11</b>	<b>78</b>	<b>89</b>
71. Anuradhapura	1			1	710	671	1,381	49	-	1,332	11	78	89
<b>8. Uva</b>	<b>1</b>		<b>2</b>	<b>3</b>	<b>2,030</b>	<b>88</b>	<b>2,118</b>	<b>1,243</b>	<b>273</b>	<b>602</b>	<b>77</b>	<b>105</b>	<b>182</b>
81. Badulla	1		2	3	2,030	88	2,118	1,243	273	602	77	105	182
<b>9. Sabaragamuwa</b>	<b>1</b>			<b>1</b>	<b>947</b>	<b>946</b>	<b>1,893</b>	<b>1,152</b>	<b>-</b>	<b>741</b>	<b>14</b>	<b>82</b>	<b>96</b>
91. Ratnapura	1			1	947	946	1,893	1,152	-	741	14	82	96
<b>Total</b>	<b>59</b>	<b>21</b>	<b>15</b>	<b>95</b>	<b>71,019</b>	<b>67,171</b>	<b>138,190</b>	<b>77,775</b>	<b>15,049</b>	<b>45,366</b>	<b>1,617</b>	<b>6,689</b>	<b>8,306</b>

Source : School Census 2025

## 18. Basic Statistics of Govt. Assisted Special Schools by Province and District -2025

Province/District	Schools	Students			Teachers		
		Male	Female	Total	Male	Female	Total
<b>1.Western</b>	<b>12</b>	<b>532</b>	<b>325</b>	<b>857</b>	<b>20</b>	<b>187</b>	<b>207</b>
11.Colombo	4	194	126	320	13	81	94
12.Gampaha	5	237	132	369	7	76	83
13.Kalutara	3	101	67	168		30	30
<b>2.Central</b>	<b>2</b>	<b>71</b>	<b>50</b>	<b>121</b>	<b>5</b>	<b>24</b>	<b>29</b>
21.Kandy	1	48	32	80	4	14	18
22.Matale	1	23	18	41	1	10	11
<b>3.Southern</b>	<b>4</b>	<b>149</b>	<b>108</b>	<b>257</b>	<b>17</b>	<b>48</b>	<b>65</b>
31.Galle	2	56	33	89	5	16	21
32.Matara	1	36	34	70		16	16
33.Hambantota	1	57	41	98	12	16	28
<b>4.Northern</b>	<b>1</b>	<b>59</b>	<b>46</b>	<b>105</b>	<b>9</b>	<b>17</b>	<b>26</b>
41.Jaffna	1	59	46	105	9	17	26
<b>5.Eastern</b>	<b>1</b>	<b>24</b>	<b>10</b>	<b>34</b>	<b>1</b>	<b>9</b>	<b>10</b>
51.Batticaloa	1	24	10	34	1	9	10
<b>6.North Western</b>	<b>2</b>	<b>109</b>	<b>90</b>	<b>199</b>	<b>10</b>	<b>33</b>	<b>43</b>
61.Kurunegala	1	57	49	106	4	17	21
62.Puttalam	1	52	41	93	6	16	22
<b>7.North Central</b>	<b>1</b>	<b>28</b>	<b>29</b>	<b>57</b>	<b>9</b>	<b>8</b>	<b>17</b>
71.Anuradhapura	1	28	29	57	9	8	17
<b>8.Uva</b>	<b>2</b>	<b>59</b>	<b>60</b>	<b>119</b>	<b>15</b>	<b>20</b>	<b>35</b>
81.Badulla	1	35	37	72	8	14	22
82.Monaragala	1	24	23	47	7	6	13
<b>9.Sabaragamuwa</b>	<b>2</b>	<b>61</b>	<b>69</b>	<b>130</b>	<b>5</b>	<b>17</b>	<b>22</b>
91.Ratnapura	1	34	20	54	3	10	13
92.Kegalle	1	27	49	76	2	7	9
<b>Total</b>	<b>27</b>	<b>1,092</b>	<b>787</b>	<b>1,879</b>	<b>91</b>	<b>363</b>	<b>454</b>

**Note:**

There are 32 Special Schools purview under the Ministry of Education dedicated only for students with special needs.

Out of those 32 schools 27 are government assisted special school and those 27 schools are administrated by boards of management. This table included Statistics of them only. Other 5 schools are administrated by Provincial councils. Since this census those 5 schools included under government schools category.

Source : School Census 2025

Prepared by Statistics Branch of MOE

## 19. Basic Statistics of Piriven (Temple Schools) by District -2025

DISTRICT	No. of Pirivena					No. of Students			Approved Teaching Staff			Unapproved Teaching Staff			All Teaching Staff
	Mulika	Maha	Vidya-yathana	Seela-matha	Total	Clergy	Laity	Total	Clergy	Laity	Total	Clergy	Laity	Total	
11. Colombo	33	14	3	2	52	2,536	1,109	3,645	262	155	417	7	6	13	430
12. Gampaha	35	26	4	3	68	3,087	3,015	6,102	314	303	617	13	3	16	633
13. Kalutara	31	10	8	2	51	2,033	3,488	5,521	233	262	495	13	18	31	526
21. Kandy	46	26	8	2	82	4,497	3,234	7,731	386	359	745	20	8	28	773
22. Matale	10	12	1		23	1,062	899	1,961	106	88	194	5	2	7	201
23. Nuwara Eliya	6	4	1		11	745	389	1,134	51	48	99	3		3	102
31. Galle	50	20	3	1	74	2,544	2,073	4,617	269	287	556	16	11	27	583
32. Matara	48	13	7		68	2,534	2,237	4,771	242	362	604	12	13	25	629
33. Hambantota	27	10	1		38	1,219	841	2,060	118	180	298	7	5	12	310
43. Vavuniya	1		1		2	95	667	762	6	14	20				20
44. Mullaitivu	1				1	32	37	69	2	4	6				6
51. Batticaloa	1				1	37	14	51	2	2	4		4	4	8
52. Ampara	16	5			21	722	277	999	65	73	138	2	4	6	144
53. Trincomalee	3	3	2		8	203	431	634	33	37	70		2	2	72
61. Kurunegala	40	38	6	1	85	3,804	3,773	7,577	352	412	764	7	19	26	790
62. Puttalam	6	8			14	579	376	955	53	49	102	1	1	2	104
71. Anuradhapura	26	16	2		44	1,923	1,719	3,642	184	197	381	2	2	4	385
72. Polonnaruwa	8	6	1		15	798	561	1,359	60	69	129	3		3	132
81. Badulla	27	11	3	1	42	1,400	1,048	2,448	151	188	339	7	3	10	349
82. Moneragala	19	6	2		27	965	1,168	2,133	84	150	234	3		3	237
91. Ratnapura	37	10	5		52	1,984	2,318	4,302	189	263	452	6	9	15	467
92. Kegalle	17	19	7		43	2,024	2,343	4,367	180	233	413	10	7	17	430
<b>Total</b>	<b>488</b>	<b>257</b>	<b>65</b>	<b>12</b>	<b>822</b>	<b>34,823</b>	<b>32,017</b>	<b>66,840</b>	<b>3,342</b>	<b>3,735</b>	<b>7,077</b>	<b>137</b>	<b>117</b>	<b>254</b>	<b>7,331</b>

Source : School Census 2025

Remark - 3 Special Pirivena (401903 - Vidyodaya Maha Pirivena , 402902 - Vidyalankara Maha Pirivena and, 407901 - Sri Gnanananda Pirivena-Wathurawila Aranya) included under Maha Piriven in this table

Prepared by Statistics Branch of MOE

**Source: School Census 2025**

*Reference Date: 2025 June 1st*

*Prepared by Statistics Branch of Ministry of Education (MOE)*

**For More Details**

*Head of the Statistics Branch*

*Tel: 011-2785566, 011-2787316, 011-2187430*

*Email: schoolcensusl@gmail.com*