



Sri Lanka Labour Force Survey is designed to measure the levels and trends of employment, unemployment and labour force in Sri Lanka. This survey is being conducted quarterly, since the first quarter of 1990.

The field work of the survey for the Third Quarter 2011 was done in July, August and September in year 2011. Even though it was planned to conduct the survey in Northern province, the survey was not conducted fully due to the unavailability of a proper sampling frame in Northern province and therefore this bulletin consists of summary statistics excluding Northern province.

(Please log on to the DCS website (www.statistics.gov.lk) for detailed tables.)

Labour force participation rate

Labour Force: Number of persons (age 10 & above) who were employed or unemployed during the reference week

Labour force participation rate: Labour force expressed as a percentage of population age 10 yr. & over

Table 1: Economically active population by sex and sector - Third Quarter 2011

Sector	Economically active population					
	Total	%	Male	%	Female	%
Total	8266328	100.0	5457863	66.0	2808465	34.0
Urban	1021756	100.0	699137	68.4	322619	31.6
Rural	6823134	100.0	4530977	66.4	2292157	33.6
Estate	421438	100.0	227750	54.0	193689	46.0

Table 2: Economically Inactive population by sex and sector - Third Quarter 2011

Sector	Economically inactive population					
	Total	%	Male	%	Female	%
Total	8855818	100.0	2638799	29.8	6217019	70.2
Urban	1242714	100.0	393638	31.7	849076	68.3
Rural	7223197	100.0	2105992	29.2	5117204	70.8
Estate	389907	100.0	139169	35.7	250739	64.3

The survey results revealed that (Table 1), the estimated economically active population (or labour force) was about 8.3 million in Third Quarter 2011. Of which 66 percent were males and 34 percent were females. Out of the economically inactive population 29.8 percent were males and 70.2 percent were females (Table 2) .

Figure 1 : Distribution of Economically active/Inactive population

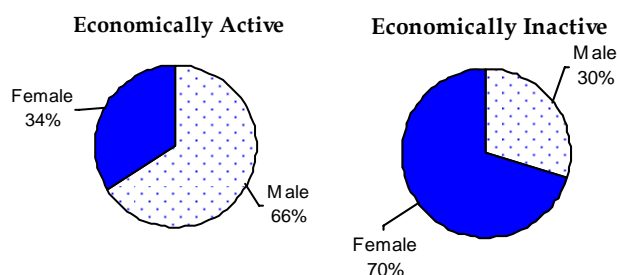


Table 3: Labour Force Participation Rate by sex & year

Year	Labour force participation rate		
	Total	Male	Female
2000	50.3	67.2	33.9
2001	48.8	66.2	31.9
2002	50.3	67.9	33.6
2003	49.7	67.5	32.6
2004	49.6	67.2	33.0
2005	49.3	67.3	32.6
2006	51.2	68.1	35.7
2007	49.8	67.8	33.4
2008	50.2	67.9	34.3
2009	49.2	66.7	33.7
2010	48.6	67.3	32.1
2011 Q1	48.8	66.2	33.2
2011 Q2	48.8	66.4	33.1
2011 Q3	48.8	67.5	32.2

Table 3 provides the information on labour force participation rates since year 2000. As can be seen from this table, male participation rate for the Third Quarter 2011 was about 67.5 percent and it was 32.2 percent for females. It is important to note that, male participation to the labour force was almost twice as that of females.

Note: Excluding Northern & Eastern provinces

Table 4 : Labour Force Participation Rate by age group & by sex - Third Quarter 2011

Age group	Sex		
	Total	Male	Female
Total	48.3	67.4	31.1
15 - 19	16.1	21.5	10.4
20 - 24	56.0	79.0	37.0
25 - 29	67.0	94.5	42.0
30 - 34	65.3	94.3	40.6
35 - 39	70.2	96.3	45.9
40 - 44	71.3	94.5	49.9
45 - 49	69.8	94.4	48.7
50 - 54	62.7	90.8	39.7
55 - 59	55.1	81.7	32.5
60+	30.1	45.7	16.0

The distribution of labour force participation rate by age group and by sex depicts more male participation compared to female in all age groups.

Highest male participation rate was reported from age group (35 - 39) yrs, while in female highest participation rate was reported from age group (40 - 44) yrs.

Employment

Employed: Persons who are engaged in some kind of work for pay or profit or family gain during the reference week.

Table 5 : Distribution of Employed population by main industry, (Third Quarter 2010 - Third Quarter 2011)

Year	Total	Major industry group		
		Agriculture	Industries	Services
July-Aug-Sept. 3rd Qtr - 2010	7578174 100.0	2367294 31.2	1850442 24.4	3360438 44.3
Oct-Nov-Dec 4th Qtr - 2010	7909178 100.0	2672472 33.8	1909857 24.1	3326849 42.1
Jan-Feb-Mar 1st Qtr - 2011	7783574 100.0	2511427 32.3	1951202 25.1	3320945 42.7
April-May-June 2nd Qtr - 2011	7956518 100.0	2684299 33.7	1877724 23.6	3394495 42.7
July-Aug-Sept. 3rd Qtr - 2011	7943295 100.0	2609757 32.9	1916181 24.1	3417357 43.0

Note: The tabulation groups based on ISIC (Rev.3) are indicated as A,B,C.....Q..

Agriculture

1. Agriculture (A)
2. Forestry and Fishery (B)
3. Mining & Quarrying (C)
4. Electricity, Gas and Water supply (E)

Industries

1. Manufacturing (D)
2. Construction (F)
3. Mining & Quarrying (C)
4. Electricity, Gas and Water supply (E)

Services

1. Wholesale and Retail Trade, Repair of Motor Vehicles, Motorcycles and Personal and Household Goods (G)
2. Hotels and Restaurants (H)
3. Transport, Storage and Communication (I)
4. Financial Intermediation and Real Estate, Renting and Business Activities (J,K)
5. Public Administration and Defence, Compulsory Social Security (L)
6. Education (M)
7. Health and Social work (N)
8. Other Community, Social and Personal Service Activities (O)
9. Private Households with Employed Persons (P)
10. Miscellaneous Labour work
11. Extra Territorial Organizations & bodies (Q)
12. Industries not adequately described

Table 5 shows the percentage distribution of employed population by main industry from Third Quarter 2010 to Third Quarter 2011. The total number of employed persons in Sri Lanka was estimated as about 7.9 million in Third Quarter 2011. Of which, about 43.0 percent engaged in services sector, 32.9 percent in agriculture sector, and 24.1 percent in Industries sector.

Table 6 : Percentage distribution of employed population by employment status and Agriculture/ Non-Agriculture sector - Third Quarter 2011

Employment Status	Total		Sector			
			Agriculture		Non Agriculture	
	No.	%	No.	%	No.	%
Total	7943295	100	2609757	32.9	5333537	67.1
Employee	4386361	100	763354	17.4	3623007	82.6
Public	1192714	100	134534	11.3	1058180	88.7
Private	3193647	100	628820	19.7	2564827	80.3
Employer	223882	100	45062	20.1	178819	79.9
Own account worker	2436665	100	1161313	47.7	1275353	52.3
Contributing family worker	896386	100	640028	71.4	256358	28.6

Table 6 shows that, comparatively higher percentage of employees both in private & public sector engage in non-agricultural activities. Also more employers were in non agriculture sector than in agriculture sector. But contributing family workers were more concentrated in agriculture sector.

Table 7 : Distribution of Employed population by main industry & sex - Third Quarter 2011

Major industry group	Total	Sex	
		Male	Female
Total	100.0	100.0	100.0
Agriculture	32.9	30.6	37.4
Industry	24.1	23.7	25.0
Services	43.0	45.7	37.5

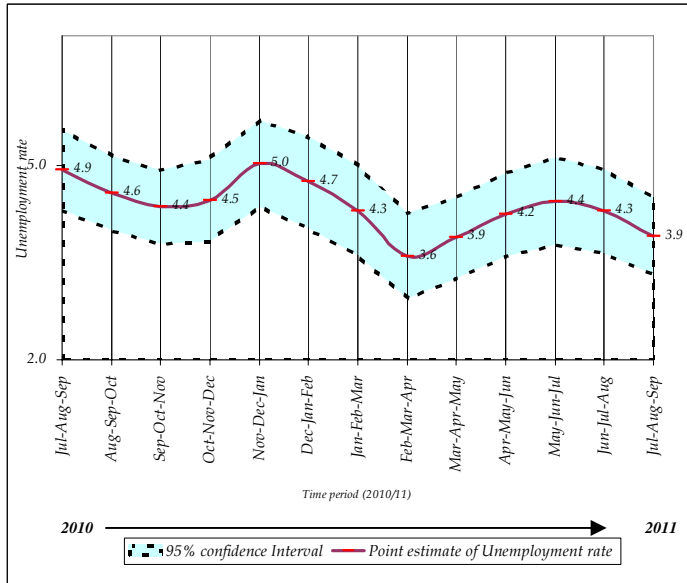
Table 7 depicts the distribution of male and female employed population by main industries. Regardless of sex, highest employment concentrated in service sector. Further among employed women about 37.4 percent was in agriculture sector while this share was 30.6 percent among males.

Unemployment

Unemployment Rate : The number of unemployed persons as a percentage of the labour force

Unemployed : Persons who are seeking and available for work, but had no employment during the reference period

Figure 2 : Unemployment rates and it's 95% confidence intervals (2010 Jul. - 2011 Sept.)



The number of unemployed persons was estimated as about 323,033 during the Third Quarter 2011.

The unemployment rate for the Third Quarter 2011 was reported as 3.9 percent.

As seen in figure 2, it is very important to note that, there were no statistically significant difference between the unemployment rates reported in different time periods of 2010/2011, when *sampling error*⁽¹⁾ was considered.

Table 8: Unemployment rate by level of education - Third Quarter 2011

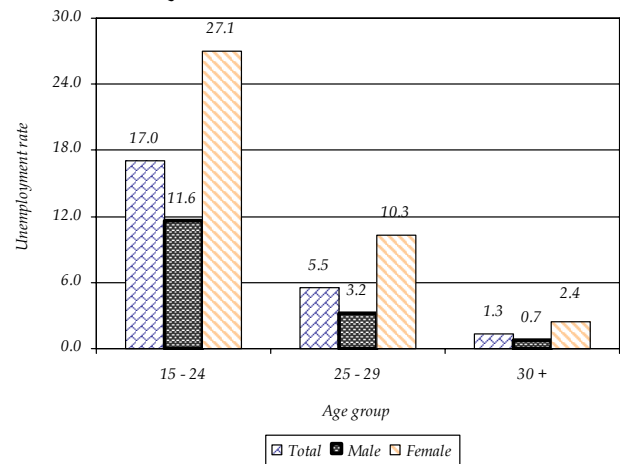
Level of Education	Unemployment rate		
	Total	Male	Female
Total	3.9	2.5	6.7
Below G.C.E. (O/L)	2.4	1.9	3.8
G.C.E. (O/L)	4.3	2.5	8.0
G.C.E. (A/L) & above	9.3	5.5	13.7



Table 9: Unemployment rate by age group and sex - Third Quarter 2011

Age group	Total	Sex	
		Male	Female
Total	3.9	2.5	6.7
15 - 24	17.0	11.6	27.1
25 - 29	5.5	3.2	10.3
30 +	1.3	0.7	2.4

Figure 3 : Unemployment rate by age group and sex - Third Quarter 2011



As can be seen from table 9, overall unemployment rate reported for female was 6.7 percent and it was 2.5 percent for male. Youth unemployment rate 15 - 24 yrs reported for Third Quarter 2011 was 17.0 percent. Highest unemployment rate was reported from age group 15 - 24 yrs, for both males (11.6) and females (27.1). Further the survey results revealed that the unemployment was severe among females than that of males, in all age groups.

The highest unemployment rate was reported from the G.C.E(A/L) and above group which was about 9.3 percent. There were 5.5 percent and 13.7 percent for males and females respectively. This shows the problem of unemployment is more acute in the case of educated females than educated males (Table 8).

⁽¹⁾ Sampling error :

When a sample, rather than the entire population, is surveyed, estimates differ from the true population values they represent. This difference, or sampling error, occurs by chance, and its variability is measured by the standard error of the estimate. **For more details, please refer the explanatory note on the labour force link in the DCS website.**

**Selected Labour Force indicators (Excluding Northern & Eastern provinces)
(2003 - 2011 Q3)**

	Year												*2011Q3
	2003	2004	2005	2006	2007	2008	2009	2010	2011Q1	2011Q2	2010Q3	2011Q3	
Labour force participation rate													
<i>by sex</i>													
Both sexes	49.7	49.6	49.3	51.2	49.8	50.2	49.2	48.6	48.8	48.8	47.7	48.8	48.3
Male	67.5	67.2	67.3	68.1	67.8	67.9	66.7	67.3	66.2	66.4	67.1	67.5	67.4
Female	32.6	33.0	32.6	35.7	33.4	34.3	33.7	32.1	33.2	33.1	30.4	32.2	31.1
<i>by residential sector</i>													
Total	49.7	49.6	49.3	51.2	49.8	50.2	49.2	48.6	48.8	48.8	47.7	48.8	48.3
Urban	45.1	45.6	46.2	45.3	45.0	46.3	43.9	42.5	42.5	46.0	41.5	45.5	45.1
Rural	50.3	50.3	49.7	52.1	50.4	50.7	49.8	49.5	49.7	49.2	48.6	49.3	48.7
Unemployment rate													
<i>by sex</i>													
Both sexes	8.1	8.1	7.2	6.5	6.0	5.2	5.7	4.9	4.2	4.1	4.7	3.7	3.9
Male	6.0	6.0	5.3	4.7	4.3	3.6	4.3	3.5	3.0	2.7	3.4	2.5	2.5
Female	12.3	12.1	10.7	9.7	9.0	8.0	8.2	7.5	6.3	6.5	7.4	6.1	6.7
<i>by selected age groups(yr)</i>													
20 - 29	19.1	18.6	16.0	15.9	15.0	13.2	15.1	13.7	12.0	12.8	13.1	10.7	11.3
20 - 24	25.8	25.2	22.4	21.0	21.1	17.8	21.0	18.9	15.8	20.1	18.1	16.7	17.7
25 - 29	11.4	11.1	9.4	11.0	9.4	9.0	10.1	9.1	8.7	6.9	8.6	5.4	5.5
<i>by selected educational levels</i>													
G.C.E.(A/L) & above													
Both sexes	16.0	15.7	12.2	11.6	11.8	9.9	10.8	11.3	9.2	7.4	10.6	8.6	9.3
Male	10.1	9.6	7.9	6.9	6.6	5.6	6.6	7.5	5.8	4.2	6.6	5.4	5.5
Female	22.4	22.5	17.1	16.8	17.5	14.4	15.1	15.6	13.1	11.0	15.4	12.4	13.7
Employed population													
<i>by sex</i>													
Both sexes	6609466	6704006	6788119	7105322	7041874	7174706	7139537	7235641	7351776	7476643	7092282	7460963	7943295
Male	4496136	4512082	4546397	4610643	4653067	4663277	4609198	4770376	4770710	4859996	4765107	4935020	5322978
Female	2113330	2191924	2241722	2494679	2388807	2511429	2530339	2465265	2581066	2616647	2327175	2525943	2620317
<i>by industry (percentage)</i>													
Total	6609466	6704006	6788119	7105322	7041874	7174706	7139537	7235641	7351776	7476643	7092282	7460963	7943295
%	(100.0)	(100.0)	(100.0)	(100.0)	(100.0)	(100.0)	(100.0)	(100.0)	(100.0)	(100.0)	(100.0)	(100.0)	(100.0)
Agriculture	2223691	2215282	2059293	2287268	2202098	2344415	2318621	2353599	2353311	2519863	2197207	2462577	2609757
%	(33.6)	(33.0)	(30.3)	(32.2)	(31.3)	(32.7)	(32.5)	(32.5)	(32.0)	(33.7)	(31.0)	33.0	32.9
Industry	1539035	1663383	1787274	1889953	1873857	1888004	1822685	1777130	1879606	1799649	1756238	1845076	1916181
%	(23.3)	(24.8)	(26.3)	(26.6)	(26.6)	(26.3)	(25.5)	(24.6)	(25.6)	(24.1)	(24.8)	24.7	24.1
Services	2846740	2825341	2941552	2928101	2965919	2942288	2998231	3104913	3118859	3157130	3138838	3153310	3417357
%	(43.1)	(42.1)	(43.3)	(41.2)	(42.1)	(41.0)	(42.0)	(42.9)	(42.4)	(42.2)	(44.3)	42.3	43.0
<i>by no. of hours worked per week (percentage)</i>													
Total	100.0	100.0	100.0	100.0	100.0	100.0	100.0	100.0	100.0	100.0	100.0	100.0	100.0
0 •	7.3	5.3	4.9	6.7	6.5	7.4	7.9	6.1	3.7	7.9	5.1	4.2	4.1
1 - 9	1.8	1.7	1.6	1.9	1.5	2.2	2.4	1.8	1.5	2.6	1.5	1.4	1.4
10 - 39	32.9	28.4	27.9	28.6	28.3	29.2	29.0	28.6	29.6	34.5	26.1	26.2	25.9
40+	58.0	64.7	65.7	62.8	63.7	61.2	60.8	63.5	65.2	55.1	67.4	68.2	68.6

• Has a job but not at work during the reference week

*Excluding Northern province

*Selected Labour Force indicators
(2003 - 2011 Q3)*

	Year										
	2003*	2004**	2005***	2006 #	2007#	2008*	2009*	2010*	2011Q1*	*2011Q2	*2011Q3
Labour force participation rate											
<i>by sex</i>											
Both sexes	48.9	48.6	48.3	51.2	49.8	49.5	48.7	48.1	48.0	48.3	48.3
Male	67.2	66.7	67.1	68.1	67.8	67.8	66.6	67.1	65.9	66.3	67.4
Female	31.4	31.5	30.9	35.7	33.4	33.2	32.8	31.2	31.9	32.3	31.1
<i>by residential sector</i>											
Total	48.9	48.6	48.3	51.2	49.8	49.5	48.7	48.1	48.0	48.3	48.3
Urban	44.4	44.9	45.5	45.3	45.0	45.9	43.5	42.0	41.5	45.5	45.1
Rural	49.6	49.2	48.7	52.1	50.4	50.0	49.4	49.0	49.0	48.7	48.7
Unemployment rate											
<i>by sex</i>											
Both sexes	8.4	8.3	7.7	6.5	6.0	5.4	5.8	4.9	4.3	4.2	3.9
Male	6.0	6.0	5.5	4.7	4.3	3.7	4.3	3.5	3.0	2.7	2.5
Female	13.2	12.8	11.9	9.7	9.0	8.4	8.6	7.7	6.7	7.0	6.7
<i>by selected age groups(yr)</i>											
20 - 29	19.4	19.2	17.2	15.9	15.0	13.7	15.4	13.8	12.8	13.2	11.3
20 - 24	26.4	25.9	24.6	21.0	21.1	18.1	21.4	19.1	16.4	20.0	17.7
25 - 29	11.4	11.4	9.5	11.0	9.4	9.5	10.3	9.2	9.6	7.6	5.5
<i>by selected educational levels</i>											
G.C.E.(A/L) & above											
Both sexes	16.5	16.8	13.8	11.6	11.8	10.5	11.2	11.6	10.0	7.8	9.3
Male	10.4	10.5	8.9	6.9	6.6	6.0	7.0	7.9	6.4	4.4	5.5
Female	23.3	23.8	19.1	16.8	17.5	15.3	15.5	15.8	14.3	11.6	13.7
Employed population											
<i>by sex</i>											
Both sexes	7012755	7440226	7518007	7105322	7041874	7648305	7602414	7706593	7783574	7956518	7943295
Male	4833483	5087861	5134765	4610643	4653067	5033449	4963176	5131986	5125489	5233537	5322978
Female	2179272	2352365	2383241	2494679	2388807	2614856	2639238	2574608	2658085	2722981	2620317
<i>by industry (percentage)</i>											
Total	7012755	7394029	7518007	7105322	7041874	7648305	7602414	7706593	7783574	7956518	7943295
%	(100.0)	(100.0)	(100.0)	(100.0)	(100.0)	(100.0)	(100.0)	(100.0)	(100.0)	(100.0)	(100.0)
Agriculture	2384397	2474725	2306039	2287268	2202098	2489731	2475921	2519905	2511427	2684299	2609757
%	(34.0)	(33.5)	(30.7)	(32.2)	(31.3)	(32.6)	(32.6)	(32.7)	(32.3)	(33.7)	32.9
Industry	1611493	1781447	1928014	1889953	1873857	2004880	1910318	1866733	1951202.1	1877724	1916181
%	(23.0)	(24.1)	(25.6)	(26.6)	(26.6)	(26.2)	(25.1)	(24.2)	(25.1)	(23.6)	24.1
Services	3016866	3137857	3283954	2928101	2965919	3153693	3216175	3319955	3320945	3394495	3417357
%	(43.0)	(42.4)	(43.7)	(41.2)	(42.1)	(41.2)	(42.3)	(43.1)	(42.7)	(42.7)	43.0
<i>by no. of hours worked per week (percentage)</i>											
Total	100.0	100.0	100.0	100.0	100.0	100.0	100.0	100.0	100.0	100.0	100.0
0 •	7.5	5.2	4.7	6.7	6.5	7.2	7.9	6.0	4.1	7.7	4.1
1 - 9	1.8	1.6	1.5	1.9	1.5	2.2	2.3	1.7	1.5	2.5	1.4
10 - 39	32.6	28.7	27.6	28.6	28.3	28.9	28.8	28.5	29.4	33.9	25.9
40+	58.1	64.5	66.2	62.8	63.7	61.7	61.0	63.9	65.0	55.9	68.6

• Has a job but not at work during the reference week

*Excluding Northern province

** Excluding Mullativu & Kilinochchi districts

***All the districts are included

Excluding Northern & Eastern provinces