



Sri Lanka Labour Force Survey is designed to measure the levels and trends of employment, unemployment and labour force in Sri Lanka. This survey is being conducted quarterly, since the first quarter of 1990.

The field work of the survey for the first quarter 2010 was done in January, February and March in year 2010. Even though it was planned to conduct the survey in Northern province, the survey was not conducted fully due to unsettled conditions in districts of Northern province, therefore this bulletin consists of summary statistics excluding Northern province.

( Please log on to the DCS website ([www.statistics.gov.lk](http://www.statistics.gov.lk)) for detailed tables.)

### Labour force participation rate

Labour Force: Number of persons (age 10 & above) who were employed or unemployed during the reference week

Labour force participation rate: Labour force expressed as a percentage of population age 10 yr. & over

**Table 1: Economically active population by sex and sector - first Quarter 2010**

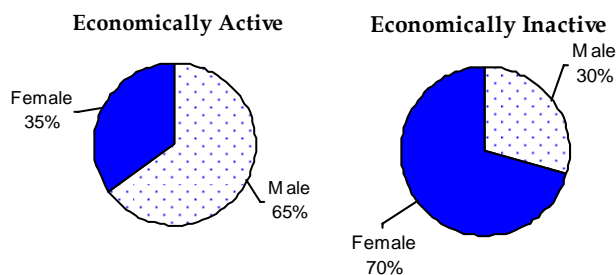
Sector	Economically active population					
	Total	%	Male	%	Female	%
Total	8129954	100.0	5288361	65.0	2841593	35.0
Urban	897030	100.0	624123	69.6	272906	30.4
Rural	6824882	100.0	4442029	65.1	2382853	34.9
Estate	408043	100.0	222209	54.5	185834	45.5

**Table 2: Economically Inactive population by sex and sector - first Quarter 2010**

Sector	Economically inactive population					
	Total	%	Male	%	Female	%
Total	8720984	100.0	2569980	29.5	6151004	70.5
Urban	1196460	100.0	328148	27.4	868312	72.6
Rural	7201920	100.0	2125758	29.5	5076162	70.5
Estate	322604	100.0	116075	36.0	206530	64.0

The survey results revealed that (Table 1), the estimated economically active population (or labour force) was about 8.1 million in first quarter 2010. Of which 65.0 percent were males and 35.0 percent were females. Out of the economically inactive population 29.5 percent were males and 70.5 percent were females (Table 2) .

**Figure 1 : Distribution of Economically active/Inactive population**



**Table 3: Labour Force Participation Rate by sex & year**

Year	Labour force participation rate		
	Total	Male	Female
2000	50.3	67.2	33.9
2001	48.8	66.2	31.9
2002	50.3	67.9	33.6
2003	49.7	67.5	32.6
2004	49.6	67.2	33.0
2005	49.3	67.3	32.6
2006	51.2	68.1	35.7
2007	49.8	67.8	33.4
2008	50.2	67.9	34.3
2009	49.9	67.4	34.3
2010Q1	49.1	67.8	32.7

*Note: Excluding Northern & Eastern provinces*

Table 3 provides the information on labour force participation rates since year 2000. As can be seen from this table, male participation rate for the first quarter 2010 was about 67.3 percent and it was 31.6 percent for females. It was important to note that, male participation to the labour force was as twice as that of females.

**Table 4 : Labour Force Participation Rate by age group & by sex - first Quarter 2010**

Age group	Sex		
	Total	Male	Female
Total	48.2	67.3	31.6
15 - 19	16.3	22.8	10.8
20 - 24	55.7	75.8	40.0
25 - 29	66.2	92.8	42.8
30 - 34	66.9	95.4	40.1
35 - 39	68.9	96.7	46.2
40 - 44	71.7	95.7	50.2
45 - 49	70.8	94.9	49.4
50 - 54	68.1	91.8	48.0
55 - 59	57.4	78.6	36.6
60+	27.3	44.7	12.8

The distribution of labour force participation rate by age groups and by sex depicts more male participation compared to female in all age groups.

Highest male participation rate was reported from age group (35 - 39) while in female highest participation rate was reported from age group (40 - 44).

## Employment

*Employed: Persons who are engaged in some kind of work for pay or profit or family gain during the reference week.*

**Table 5 : Distribution of Employed population by main industry, (first quarter 2009 – first Quarter 2010)**

Year	Total	Major industry group		
		Agriculture	Industries	Services
Jan-Feb-Mar	7709784	2613350	1894279	3202155
1st Qtr - 2009	100.0	33.9	24.6	41.5
April-May-June	7465030	2382913	1913893	3168224
2nd Qtr - 2009	100.0	31.9	25.6	42.4
July-Aug-Sept.	7641730	2426113	1912169	3303448
3rd Qtr - 2009	100.0	31.7	25.0	43.2
Oct-Nov-Dec	7592833	2481308	1920825	3190700
4th Qtr - 2009	100.0	32.7	25.3	42.0
Jan-Feb-Mar	7725753	2600463	1911428	3213861
1st Qtr - 2010	100.0	33.7	24.7	41.6

**Note: The tabulation groups based on ISIC (Rev.3) are indicated as A,B,C.....Q..**

### Agriculture

1. Agriculture (A)
2. Forestry and Fishery (B)

### Industries

1. Manufacturing (D)
2. Construction (F)
3. Mining & Quarrying (C)
4. Electricity, Gas and Water supply (E)

### Services

1. Wholesale and Retail Trade, Repair of Motor Vehicles, Motorcycles and Personal and Household Goods (G)
2. Hotels and Restaurants (H)
3. Transport, Storage and Communication (I)
4. Financial Intermediation and Real Estate, Renting and Business Activities (J,K)
5. Public Administration and Defence, Compulsory Social Security (L)
6. Education (M)
7. Health and Social work (N)
8. Other Community, Social and Personal Service Activities (O)
9. Private Households with Employed Persons (P)
10. Miscellaneous Labour work
11. Extra Territorial Organizations & bodies (Q)

Table 5 shows the percentage distribution of employed population by main industry from first quarter 2009 to first quarter 2010. The total number of employed persons in Sri Lanka was estimated as about 7.7 million in first quarter 2010. Of which, about 41.6 percent engaged in services sector, 33.7 percent in agriculture sector, and 24.7 percent in Industries sector.

**Table 6 : Percentage distribution of employed population by employment status and Agriculture/ Non-Agriculture sector – first Quarter 2010**

Employment Status	Total		Sector			
			Agriculture		Non Agriculture	
	No.	%	No.	%	No.	%
Total	7725753	100.0	2600463	33.7	5125290	66.3
Employee	4291504	100.0	750051	17.5	3541453	82.5
Public	1094226	100.0	104727	9.6	989498	90.4
Private	3197279	100.0	645324	20.2	2551955	79.8
Employer	184841	100.0	38463	20.8	146378	79.2
Own account worker	2426459	100.0	1206988	49.7	1219470	50.3
Contributing family worker	822949	100.0	604960	73.5	217988	26.5

Table 6 shows that, comparatively higher percentage of employees both in private & public sector engage in non-agricultural activities. Also more employers were in non agriculture sector than in agriculture sector. But own account workers and contributed family workers more concentrated more in agriculture sector.

**Table 7 : Distribution of Employed population by main industry & sex – first Quarter 2010**

Major industry group	Total	Sex	
		Male	Female
Total	100.0	100.0	100.0
Agriculture	33.7	31.0	38.8
Industry	24.7	24.3	25.6
Services	41.6	44.7	35.6

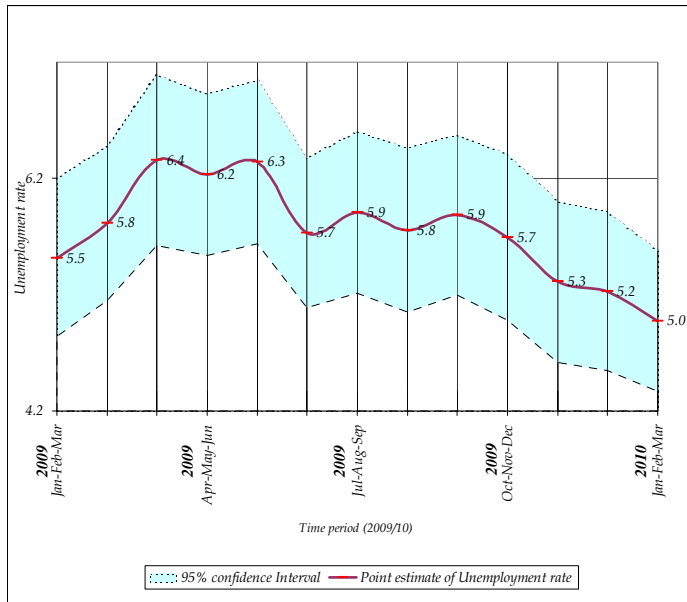
Table 7 depicts the distribution of male and female employed population by main industries. Highest employment concentrated in service sector for both male and female. Further among employed women about 38.8 percent was in agriculture sector while this share was 31.0 percent for males.

## Unemployment

**Unemployment Rate : The number of unemployed persons as a percentage of the labour force**

**Unemployed : Persons who are seeking and available for work, but had no employment during the reference period**

**Figure 2 : Unemployment rates and it's 95% confidence intervals (2009 January - 2010 March)**



The number of unemployed persons was estimated as about 404,000 during the first quarter 2010.

The unemployment rate for the first quarter 2010 was reported as 5.0 percent.

As seen in figure 2, it is very important to note that, there were no statistically significant difference between the unemployment rates reported in different time periods of 2009/2010, when *sampling error*<sup>(1)</sup> was considered.

**Table 8: Unemployment rate by level of education - first Quarter 2010**

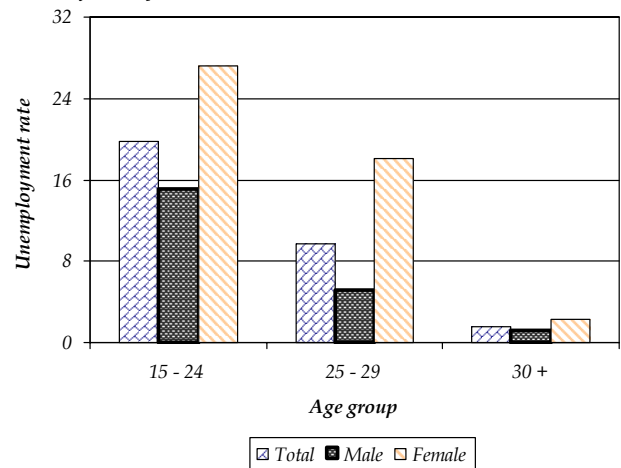
Level of Education	Unemployment rate		
	Total	Male	Female
Total	5.0	3.4	7.9
Below G.C.E. (O/L)	2.7	2.0	4.2
G.C.E. (O/L)	7.0	5.6	9.6
G.C.E. (A/L) & above	12.0	8.0	16.7



**Table 9: Unemployment rate by age group and sex - first Quarter 2010**

Age group	Total	Sex	
		Male	Female
Total	5.0	3.4	7.9
15 - 24	19.8	15.1	27.2
25 - 29	9.7	5.2	18.1
30 +	1.6	1.2	2.3

**Figure 3 : Unemployment rate by age group and sex - first quarter 2010**



As can be seen from table 9, overall unemployment rate reported for female was 7.9 percent and it was 3.4 percent for male. Youth unemployment rate 15 - 24 yrs reported for first quarter 2010 was 19.8. Highest unemployment rate was reported from age group 15 - 24 yrs, for both males (15.1) and females (27.2). Further the survey results revealed that the unemployment was severe among females than that of males, in all age groups.

The highest unemployment rate was reported from the G.C.E(A/L) and above group which was about 12.0 percent. There were 8.0 percent and 16.7 percent for males and females respectively. This shows the problem of unemployment is more acute in the case of educated females than educated males (Table 8).

<sup>(1)</sup> *Sampling error :*

When a sample, rather than the entire population, is surveyed, estimates differ from the true population values they represent. This difference, or sampling error, occurs by chance, and its variability is measured by the standard error of the estimate. **For more details, please refer the explanatory note on the labour force link in the DCS website.**

***Selected Labour Force indicators (Excluding Northern & Eastern provinces)***  
***( 2000 - 2009 )***

	Year											2010Q1*
	2000	2001	2002	2003	2004	2005	2006	2007	2008	2009	2010Q1	
<b>Labour force participation rate</b>												
<i>by sex</i>												
Both sexes	50.3	48.8	50.3	49.7	49.6	49.3	51.2	49.8	50.2	49.2	49.1	48.2
Male	67.2	66.2	67.9	67.5	67.2	67.3	68.1	67.8	67.9	66.7	67.8	67.3
Female	33.9	31.9	33.6	32.6	33.0	32.6	35.7	33.4	34.3	33.7	32.7	31.6
<i>by residential sector</i>												
Total	50.3	48.8	50.3	49.7	49.6	49.3	51.2	49.8	50.2	49.2	49.1	48.2
Urban	44.9	44.2	46.0	45.1	45.6	46.2	45.3	45.0	46.3	43.9	44.1	42.8
Rural	51.2	49.6	50.9	50.3	50.3	49.7	52.1	50.4	50.7	49.8	49.8	49.0
<b>Unemployment rate</b>												
<i>by sex</i>												
Both sexes	7.6	7.9	8.8	8.1	8.1	7.2	6.5	6.0	5.2	5.7	5.1	5.0
Male	5.8	6.2	6.6	6.0	6.0	5.3	4.7	4.3	3.6	4.3	3.5	3.4
Female	11.1	11.5	12.9	12.3	12.1	10.7	9.7	9.0	8.0	8.2	7.9	7.9
<i>by selected age groups(yr)</i>												
20 - 29	17.4	18.4	20.1	19.1	18.6	16.0	15.9	15.0	13.2	15.1	14.5	14.3
20 - 24	23.0	24.4	27.0	25.8	25.2	22.4	21.0	21.1	17.8	21.0	20.1	19.7
25 - 29	10.9	11.3	11.6	11.4	11.1	9.4	11.0	9.4	9.0	10.1	9.8	9.7
<i>by selected educational levels</i>												
G.C.E.(A/L) & above												
Both sexes	14.9	15.3	16.8	16.0	15.7	12.2	11.6	11.8	9.9	10.8	11.9	12.0
Male	8.8	10.1	10.8	10.1	9.6	7.9	6.9	6.6	5.6	6.6	7.8	8.0
Female	21.5	21.5	23.0	22.4	22.5	17.1	16.8	17.5	14.4	15.1	16.4	16.7
<b>Employed population</b>												
<i>by sex</i>												
Both sexes	6310247	6235588	6519415	6609466	6704006	6788119	7105322	7041874	7174706	7139537	7287198	7725753
Male	4241546	4248877	4395164	4496136	4512082	4546397	4610643	4653067	4663277	4609198	4771572	5108289
Female	2068701	1986711	2124250	2113330	2191924	2241722	2494679	2388807	2511429	2530339	2515626	2617464
<i>by industry (percentage)</i>												
Total	6310247	6235588	6519415	6609466	6704006	6788119	7105322	7041874	7174706	7139537	7287198	7725753
%	(100.0)	(100.0)	(100.0)	(100.0)	(100.0)	(100.0)	(100.0)	(100.0)	(100.0)	100	100	100
Agriculture	2274153	2033343	2247602	2223691	2215282	2059293	2287268	2202098	2344415	2318621	2455665	2600463
%	(36.0)	(32.6)	(34.5)	(33.6)	(33.0)	(30.3)	(32.2)	(31.3)	(32.7)	32.5	33.7	34
Industry	1490795	1491408	1459194	1539035	1663383	1787274	1889953	1873857	1888004	1822685	1835359	1911428
%	(23.6)	(23.9)	(22.4)	(23.3)	(24.8)	(26.3)	(26.6)	(26.6)	(26.3)	25.5	25.2	25
Services	2545299	2710837	2812619	2846740	2825341	2941552	2928101	2965919	2942288	2998231	2996174	3213861
%	(40.3)	(43.5)	(43.1)	(43.1)	(42.1)	(43.3)	(41.2)	(42.1)	(41.0)	42.0	41.1	42
<i>by no. of hours worked per week (percentage)</i>												
Total	100.0	100.0	100.0	100.0	100.0	100.0	100.0	100.0	100.0	100.0	100.0	100.0
0 •	7.2	4.3	5.6	7.3	5.3	4.9	6.7	6.5	7.4	7.9	3.8	3.7
1 - 9	1.9	1.5	1.5	1.8	1.7	1.6	1.9	1.5	2.2	2.4	1.3	1.3
10 - 39	32.7	28.2	32.0	32.9	28.4	27.9	28.6	28.3	29.2	29.0	28.8	28.6
40+	58.2	66.1	60.9	58.0	64.7	65.7	62.8	63.7	61.2	60.8	66.0	66.5

• Has a job but not at work during the reference week

\* Including Eastern province

Note: However it is to be noted that the difference between corresponding figures in any given two quarters may not necessarily be statistically significant.

Department of Census & Statistics, 15/12, Maitland Crescent, Colombo 7  
Telephone 2695291, Fax 94-11-2697594, Email :sample.survey @ statistics.gov.lk  
Web address: www.statistics.gov.lk

**Selected Labour Force indicators**  
( 2000 - 2009 )

	Year										
	2000#	2001#	2002#	2003*	2004**	2005***	2006 #	2007#	2008*	2009*	2010Q1*
<b>Labour force participation rate</b>											
<i>by sex</i>											
Both sexes	50.3	48.8	50.3	48.9	48.6	48.3	51.2	49.8	49.5	48.7	48.2
Male	67.2	66.2	67.9	67.2	66.7	67.1	68.1	67.8	67.8	66.6	67.3
Female	33.9	31.9	33.6	31.4	31.5	30.9	35.7	33.4	33.2	32.8	31.6
<i>by residential sector</i>											
Total	50.3	48.8	50.3	48.9	48.6	48.3	51.2	49.8	49.5	48.7	48.2
Urban	44.9	44.2	46.0	44.4	44.9	45.5	45.3	45.0	45.9	43.5	42.8
Rural	51.2	49.6	50.9	49.6	49.2	48.7	52.1	50.4	50.0	49.4	49.0
<b>Unemployment rate</b>											
<i>by sex</i>											
Both sexes	7.6	7.9	8.8	8.4	8.3	7.7	6.5	6.0	5.4	5.8	5.0
Male	5.8	6.2	6.6	6.0	6.0	5.5	4.7	4.3	3.7	4.3	3.4
Female	11.1	11.5	12.9	13.2	12.8	11.9	9.7	9.0	8.4	8.6	7.9
<i>by selected age groups(yr)</i>											
20 - 29	17.4	18.4	20.1	19.4	19.2	17.2	15.9	15.0	13.7	15.4	14.3
20 - 24	23.0	24.4	27.0	26.4	25.9	24.6	21.0	21.1	18.1	21.4	19.7
25 - 29	10.9	11.3	11.6	11.4	11.4	9.5	11.0	9.4	9.5	10.3	9.7
<i>by selected educational levels</i>											
G.C.E.(A/L) & above											
Both sexes	14.9	15.3	16.8	16.5	16.8	13.8	11.6	11.8	10.5	11.2	12.0
Male	8.8	10.1	10.8	10.4	10.5	8.9	6.9	6.6	6.0	7.0	8.0
Female	21.5	21.5	23.0	23.3	23.8	19.1	16.8	17.5	15.3	15.5	16.7
<b>Employed population</b>											
<i>by sex</i>											
Both sexes	6310247	6235588	6519415	7012755	7440226	7518007	7105322	7041874	7648305	7602414	7725753
Male	4241546	4248877	4395164	4833483	5087861	5134765	4610643	4653067	5033449	4963176	5108289
Female	2068701	1986711	2124250	2179272	2352365	2383241	2494679	2388807	2614856	2639238	2617464
<i>by industry (percentage)</i>											
Total	6310247	6235588	6519415	7012755	7394029	7518007	7105322	7041874	7648305	7602414	7725753
%	(100.0)	(100.0)	(100.0)	(100.0)	(100.0)	(100.0)	(100.0)	(100.0)	(100.0)	100	100
Agriculture	2274153	2033343	2247602	2384397	2474725	2306039	2287268	2202098	2489731	2475921	2600463
%	(36.0)	(32.6)	(34.5)	(34.0)	(33.5)	(30.7)	(32.2)	(31.3)	(32.6)	33	34
Industry	1490795	1491408	1459194	1611493	1781447	1928014	1889953	1873857	2004880	1910318	1911428
%	(23.6)	(23.9)	(22.4)	(23.0)	(24.1)	(25.6)	(26.6)	(26.6)	(26.2)	25	25
Services	2545299	2710837	2812619	3016866	3137857	3283954	2928101	2965919	3153693	3216175	3213861
%	(40.3)	(43.5)	(43.1)	(43.0)	(42.4)	(43.7)	(41.2)	(42.1)	(41.2)	42	42
<i>by no. of hours worked per week (percentage)</i>											
Total	100.0	100.0	100.0	100.0	100.0	100.0	100.0	100.0	100.0	100.0	100.0
0 •	7.2	4.3	5.6	7.5	5.2	4.7	6.7	6.5	7.2	7.9	3.7
1 - 9	1.9	1.5	1.5	1.8	1.6	1.5	1.9	1.5	2.2	2.3	1.3
10 - 39	32.7	28.2	32.0	32.6	28.7	27.6	28.6	28.3	28.9	28.8	28.6
40+	58.2	66.1	60.9	58.1	64.5	66.2	62.8	63.7	61.7	61.0	66.5

• Has a job but not at work during the reference week

\*Excluding Northern province

\*\*\*All the districts are included

\*\* Excluding Mullativu & Kilinochchi districts # Excluding Northern & Eastern provinces