



REPORT OF THE

**SRI LANKA LABOUR FORCE
SURVEY**

THIRD QUARTER - 2006

DEPARTMENT OF CENSUS & STATISTICS

Preface

Sri Lanka Labour Force Survey was designed to measure the levels and trends of employment, unemployment and Labour force in Sri Lanka. This Survey is being conducted quarterly, since the first quarter of 1990.

In order to fulfill the user's requirements, and also to provide additional information for the national planning purposes, Department of Census and Statistics observed the necessity of having such information especially on Household economic activities, Informal sector employment, Informal employment and Underemployment etc. Therefore, after carefully reviewing of Labour Force Survey schedule with the assistance of ESCAP Advisor, some improvements were made to the Labour Force survey schedule to collect the information which are mentioned above.

This revised version of the survey schedule which has already been implemented in first quarter 2006, was used in the third quarter 2006 as well.

The field work of the survey for the third quarter 2006 was done in July, August and September 2006. Due to the prevailing situation in the country the survey was not started in North and East in January, as scheduled. Even though we were able to start the survey work there in February, there were some delays of completing survey work in Northern and Eastern provinces on scheduled time. Therefore, the national level estimates based on the data collected in the third quarter does not cover the Northern and Eastern provinces.

A nationally representative annual sample of about 22,000 housing units have been selected for the survey in 2006. However as mentioned above, the survey was not started in January in North and East as scheduled, so this report is based on a quarterly sample of 3,500 housing units, excluding Northern & Eastern provinces providing national level estimates with a stipulated standard errors of labour force characteristics as reported in the reference period of the third quarter 2006.

D.B.P.S.Vidyaratna
Director General of Census and Statistics

Department of Census and Statistics,
15/12, Maitland Crescent,
Colombo 7.
22.01. 2007.

Acknowledgements

This report is the sixty third series of Quarterly Labour Force survey which was commenced from the first quarter 1990 and is being continued by the Department of Census and Statistics.

Planning and the execution of the survey was done by the staff of the Sample Surveys Division under the supervision of Mrs. Anoma S. Jayasekara, Deputy Director.

Mrs. Dharma Dissanayaka, Senior Statistician of the Sample Surveys Division was responsible for revising the survey questionnaire after carefully reviewing the relevant issues. Her contribution is very much appreciated.

Field operation activities were organized by Mr. R.A.P. Kumarasinghe, Statistician of the Sample Surveys Division.

The computer data processing and final tabulations were done by Mrs. W.A.S.M.P. Gunasekara, Statistical Officer and Mr. M.B.M. Shiras, Statistical Assistant of the Sample Surveys Division, under the supervision of Mr. P.A. Subawickrama, Statistician using Microcomputers.

This publication was organized and prepared by Mrs. Anoma Jayasekara, Deputy Director, Sample Surveys Division.

The Data Processing Division, under the direction of Mrs. S.V. Nanayakkara, Director (Data Processing) and under the supervision of Mr. Migara Fernando and Mr. Wasantha Weerasiri, System Analyst/Programmers, was responsible for the survey data entry and preparation of data entry and computer edits programmes.

It is also acknowledged with appreciation the substantial contribution made by Mr. Pietro Genari, Director, Statistics Division of Economic and Social Commission for Asia and the Pacific (ESCAP) for providing technical assistance to improve the Labour Force Survey questionnaire.

Acknowledgments are also due to Mr. Armando Levinson, Consultant, International Programme Center (IPC), USA, for providing valuable technical assistance in many ways, in order to improve the statistical reliability of the estimates of the labour force characteristics.

Sample Survey Division implemented the Sri Lanka Labour Force Survey programme, under the direction of Mr. G.Y.L. Fernando, Director (Sample Surveys).

District field staff of the Department who worked on the survey deserve a special word of thanks. They include District Senior Statisticians/ Statisticians and field Statistical Officers, who worked hard at the data collection stage, to make this survey a success.

Printing of the report was done at the Printing Division, under the supervision of Mr. S. Hettiarachchie, Senior Statistician.

Finally, I wish to express my appreciation to all the respondents of the survey for their valuable co-operation.

Sri Lanka Labour Force Survey
Summary Statistics on Labour Force Characteristics
3rd quarter - 2006

10 years & over population

	Total	Male	Female	Urban	Rural
Population (10 years & over)	14988913	7132190	7856723	1902425	13086488
Labour force in this age group	7601845	4849763	2752082	857821	6744024
Labour force participation rate	50.7	68.0	35.0	45.1	51.5
Employed population	7111982	4628710	2483272	813749	6298233
Employment rate	93.6	95.4	90.2	94.9	93.4
Unemployed population	489863	221053	268810	44072	445791
Unemployment rate	6.4	4.6	9.8	5.1	6.6
Not in labour force	7387068	2282427	5104641	1044604	6342464

15 years & over population

Population (15 years & over)	13390459	6333536	7056923	1695072	11695387
Labour force in this age group	7586525	4839266	2747258	856845	6729679
Labour force participation rate	56.7	76.4	38.9	50.5	57.5
Employed population	7097765	4618213	2479552	812773	6284992
Employment rate	93.6	95.4	90.3	94.9	93.4
Unemployed population	488759	221053	267706	44072	444688
Unemployment rate	6.4	4.6	9.7	5.1	6.6
Not in labour force	5803935	1494270	4309665	838227	4965708

20 years & over population

Population (20 years & over)	11799713	5519987	6279725	1486083	10313630
Labour force in this age group	7218401	4613385	2605016	818334	6400067
Labour force participation rate	61.2	83.6	41.5	55.1	62.1
Employed population	6805759	4431696	2374063	781233	6024526
Employment rate	94.3	96.1	91.1	95.5	94.1
Unemployed population	412641	181689	230952	37100	375541
Unemployment rate	5.7	3.9	8.9	4.5	5.9
Not in labour force	4581312	906602	3674709	667749	3913563

Note:

It is important to note that, all the data published here are the estimates based on a sample survey and these are subject to sampling errors. These sampling errors can be statistically evaluated from the survey results. Therefore, sampling error is normally measured in terms of the standard error of the particular variable. Standard error could be used to calculate the confidence limits with a prescribed accuracy where the true value of the estimates lies.

Further reliability of the estimates can be expressed in terms of Coefficient of Variation (CV). The CV is a relative measure of the sampling error and is calculated as sampling error divided by the expected value of the given characteristic.

In view of this, following table is given to show the estimates for some selected variables, its standard error, CV and 95% Confidence interval.

It is also important to note that all the estimates we publish in this report are subject to sampling error and one should be cautious in the interpretation of results, especially with respect to the trends over time.

Estimate of Confidence Intervals for some selected characteristics

Year	Labour Force					Employed				
	No.	Standard error	C.V (%)	95% C.I.		No.	Standard error	C.V (%)	95% C.I.	
				Lower	Upper				Lower	Upper
2003 *	7653717	83576	1.09	7489909	7817525	7012756	77834	1.11	6860202	7165310
2004 **	8061354	79707	0.99	7905128	8217579	7394029	74648	1.01	7247719	7540340
2005***	8141347	233233	2.86	7684210	8598485	7518007	219889	2.92	7087025	7948988
2006Q1#	7627761	123921	1.62	7384875	7870647	7081435	120077	1.70	6846083	7316787
2006Q2#	7549361	126701	1.68	7301027	7797695	7073844	124599	1.76	6829630	7318058
2006Q3#	7601845	135568	1.78	7335416	7868274	7111982	133257	1.87	6850094	7373870

Year	Unemployed					Unemployment Rate				
	No.	Standard error	C.V (%)	95% C.I.		Rate	Standard error	C.V (%)	95% C.I.	
				Lower	Upper				Lower	Upper
2003 *	640961	20755	3.24	600281	681641	0.084	0.002	2.99	0.079	0.089
2004 **	667324	18385	2.76	631290	703358	0.083	0.002	2.55	0.079	0.087
2005***	623341	39397	6.32	546123	700558	0.077	0.004	5.76	0.068	0.085
2006Q1#	546326	41468	7.59	465048	627604	0.072	0.005	7.34	0.061	0.082
2006Q2#	475516	32746	6.89	411334	539699	0.063	0.004	6.77	0.055	0.071
2006Q3#	489863	30071	6.14	430765	548962	0.064	0.004	6.25	0.057	0.072

* - Including Eastern province but Excluding Northern province

** - Excluding Mulathivu and Kilinochchi districts.

***- All the districts are included

- Excluding Northern & Eastern provinces

Selected Labour Force indicators (Excluding Northern & Eastern provinces)
(1996 - 2006 Third quarter)

	Year										
	1996	1998	2000	2001	2002	2003	2004	2005	2006 Q1	2006 Q2	2006 Q3
Labour force participation rate											
<i>by sex</i>											
Both sexes	48.6	51.7	50.3	48.8	50.3	49.7	49.6	49.3	51.7	51.1	50.7
Male	65.9	67.5	67.2	66.2	67.9	67.5	67.2	67.3	69.3	68.4	68.0
Female	31.6	36.4	33.9	31.9	33.6	32.6	33.0	32.6	35.5	35.4	35.0
<i>by residential sector</i>											
Total	48.6	51.7	50.3	48.8	50.3	49.7	49.6	49.3	51.7	51.1	50.7
Urban	44.4	45.2	44.9	44.2	46.0	45.1	45.6	46.2	46.3	45.1	45.1
Rural	49.5	52.7	51.2	49.6	50.9	50.3	50.3	49.7	52.5	52.0	51.5
Unemployment rate											
<i>by sex</i>											
Both sexes	11.3	9.2	7.6	7.9	8.8	8.1	8.1	7.2	7.2	6.3	6.4
Male	8.2	6.5	5.8	6.2	6.6	6.0	6.0	5.3	5.5	4.9	4.6
Female	17.7	14.0	11.1	11.5	12.9	12.3	12.1	10.7	10.1	8.7	9.8
<i>by selected age groups(yr)</i>											
20 - 29	22.0	19.3	17.4	18.4	20.1	19.1	18.6	16.0	16.8	15.3	16.4
20 - 24	29.1	25.4	23.0	24.4	27.0	25.8	25.2	22.4	22.4	20.6	21.5
25 - 29	14.4	12.4	10.9	11.3	11.6	11.4	11.1	9.4	11.3	10.1	11.9
<i>by selected educational levels</i>											
G.C.E.(A/L) & above											
Both sexes	19.0	17.5	14.9	15.3	16.8	16.0	15.7	12.2	12.1	10.6	11.3
Male	10.1	9.4	8.8	10.1	10.8	10.1	9.6	7.9	6.8	6.8	6.5
Female	28.3	25.8	21.5	21.5	23.0	22.4	22.5	17.1	18.6	14.7	16.5
Employed population											
<i>by sex</i>											
Both sexes	5536216	6049388	6310247	6235588	6519415	6609466	6704006	6788119	7081435	7073844	7111982
Male	3856411	4004621	4241546	4248877	4395164	4496136	4512082	4546397	4634156	4572623	4628710
Female	1679805	2044767	2068701	1986711	2124250	2113330	2191924	2241722	2447279	2501221	2483272
<i>by industry (percentage)</i>											
Total	5536216	6049388	6310247	6235588	6519415	6609466	6704006	6788119	7081435	7073844	7111982
%	(100.0)	(100.0)	(100.0)	(100.0)	(100.0)	(100.0)	(100.0)	(100.0)	(100.0)	(100.0)	(100.0)
Agriculture	2071764	2378572	2274153	2033343	2247602	2223691	2215282	2059293	2346321	2423036	2122239
%	(37.4)	(39.3)	(36.0)	(32.6)	(34.5)	(33.6)	(33.0)	(30.3)	(33.1)	(34.3)	(29.8)
Industry	1217977	1325735	1490795	1491408	1459194	1539035	1663383	1787274	1862896	1791226	2017518
%	(22.0)	(21.9)	(23.6)	(23.9)	(22.4)	(23.3)	(24.8)	(26.3)	(26.3)	(25.3)	(28.4)
Services	2246475	2345081	2545299	2710837	2812619	2846740	2825341	2941552	2872217	2859583	2972225
%	(40.6)	(38.8)	(40.3)	(43.5)	(43.1)	(43.1)	(42.1)	(43.3)	(40.6)	(40.4)	(41.8)
<i>by no. of hours worked per week (percentage)</i>											
Total	100.0	100.0	100.0	100.0	100.0	100.0	100.0	100.0	100.0	100.0	100.0
0 •	4.9	5.3	7.2	4.3	5.6	7.3	5.3	4.9	4.5	9.6	6.5
1 - 9	1.8	2.3	1.9	1.5	1.5	1.8	1.7	1.6	2.6	2.0	1.5
10 - 39	32.0	32.9	32.7	28.2	32.0	32.9	28.4	27.9	30.8	28.1	27.3
40+	61.3	59.6	58.2	66.1	60.9	58.0	64.7	65.7	62.1	60.3	64.8

• Has a job but not at work during the reference week

Selected Labour Force indicators
(1996 - 2006 Third quarter)

	Year										
	1996	1998	2000	2001	2002	2003*	2004**	2005***#	2006 Q1	#2006 Q2	# 2006 Q3
Labour force participation rate											
<i>by sex</i>											
Both sexes	48.6	51.7	50.3	48.8	50.3	48.9	48.6	48.3	51.7	51.1	50.7
Male	65.9	67.5	67.2	66.2	67.9	67.2	66.7	67.1	69.3	68.4	68.0
Female	31.6	36.4	33.9	31.9	33.6	31.4	31.5	30.9	35.5	35.4	35.0
<i>by residential sector</i>											
Total	48.6	51.7	50.3	48.8	50.3	48.9	48.6	48.3	51.7	51.1	50.7
Urban	44.4	45.2	44.9	44.2	46.0	44.4	44.9	45.5	46.3	45.1	45.1
Rural	49.5	52.7	51.2	49.6	50.9	49.6	49.2	48.7	52.5	52.0	51.5
Unemployment rate											
<i>by sex</i>											
Both sexes	11.3	9.2	7.6	7.9	8.8	8.4	8.3	7.7	7.2	6.3	6.4
Male	8.2	6.5	5.8	6.2	6.6	6.0	6.0	5.5	5.5	4.9	4.6
Female	17.7	14.0	11.1	11.5	12.9	13.2	12.8	11.9	10.1	8.7	9.8
<i>by selected age groups(yr)</i>											
20 - 29	22.0	19.3	17.4	18.4	20.1	19.4	19.2	17.2	16.8	15.3	16.4
20 - 24	29.1	25.4	23.0	24.4	27.0	26.4	25.9	24.6	22.4	20.6	21.5
25 - 29	14.4	12.4	10.9	11.3	11.6	11.4	11.4	9.5	11.3	10.1	11.9
<i>by selected educational levels</i>											
G.C.E.(A/L) & above											
Both sexes	19.0	17.5	14.9	15.3	16.8	16.5	16.8	13.8	12.1	10.6	11.3
Male	10.1	9.4	8.8	10.1	10.8	10.4	10.5	8.9	6.8	6.8	6.5
Female	28.3	25.8	21.5	21.5	23.0	23.3	23.8	19.1	18.6	14.7	16.5
Employed population											
<i>by sex</i>											
Both sexes	5536216	6049388	6310247	6235588	6519415	7012755	7440226	7518007	7081435	7073844	7111982
Male	3856411	4004621	4241546	4248877	4395164	4833483	5087861	5134765	4634156	4572623	4628710
Female	1679805	2044767	2068701	1986711	2124250	2179272	2352365	2383241	2447279	2501221	2483272
<i>by industry (percentage)</i>											
Total	5536216	6049388	6310247	6235588	6519415	7012755	7394029	7518007	7081435	7073844	7111782
%	(100.0)	(100.0)	(100.0)	(100.0)	(100.0)	(100.0)	(100.0)	(100.0)	(100.0)	(100.0)	(100.0)
Agriculture	2071764	2378572	2274153	2033343	2247602	2384397	2474725	2306039	2346321	2423036	2122239
%	(37.4)	(39.3)	(36.0)	(32.6)	(34.5)	(34.0)	(33.5)	(30.7)	(33.1)	(34.3)	(29.8)
Industry	1217977	1325735	1490795	1491408	1459194	1611493	1781447	1928014	1862896	1791226	2017518
%	(22.0)	(21.9)	(23.6)	(23.9)	(22.4)	(23.0)	(24.1)	(25.6)	(26.3)	(25.3)	(28.4)
Services	2246475	2345081	2545299	2710837	2812619	3016866	3137857	3283954	2872217	2859583	2972225
%	(40.6)	38.8)	(40.3)	(43.5)	(43.1)	(43.0)	(42.4)	(43.7)	(40.6)	(40.4)	(41.8)
<i>by no. of hours worked per week (percentage)</i>											
Total	100.0	100.0	100.0	100.0	100.0	100.0	100.0	100.0	100.0	100.0	100.0
0 •	4.9	5.3	7.2	4.3	5.6	7.5	5.2	4.7	4.5	9.6	6.5
1 - 9	1.8	2.3	1.9	1.5	1.5	1.8	1.6	1.5	2.6	2.0	1.5
10 - 39	32.0	32.9	32.7	28.2	32.0	32.6	28.7	27.6	30.8	28.1	27.3
40+	61.3	59.6	58.2	66.1	60.9	58.1	64.5	66.2	62.1	60.3	64.8

• Has a job but not at work during the reference week

*Excluding Northern province

***All the districts are included

** Excluding Mullativu & Kilinochchi districts

Excluding Northern & Eastern provinces

(Before 2003, estimates excluded both Northern & Eastern provinces)

CONTENTS

Page No.

WORKING AGE POPULATION	1
EMPLOYED POPULATION	2
UNEMPLOYED POPULATION	3

TABLES

Table No.

1. Historical table of Labour Force Status (current) of the Household Population, 10 years of Age and over - Both Sexes	4
1A. Historical table of Labour Force Status (current) of the Household Population, 10 years of Age and over - Male	5
1B. Historical table of Labour Force Status (current) of the Household Population, 10 years of Age and over - Female	5
2. Labour Force Status (current) of the Household Population 10 years of Age and over, by Age - Both Sexes	6
2A. Labour Force Status (current) of the Household Population 10 years of Age and over, by Age - Male	7
2B. Labour Force Status (current) of the Household Population 10 years of Age and over, by Age - Female	7
3. Historical table of Currently Employed persons by Age Groups (percentage) - Both Sexes	8
3A. Historical table of Currently Employed persons by Age Groups (percentage) - Male	9
3B. Historical table of Currently Employed persons by Age Groups (percentage) - Female	9
4. Historical table of Currently Employed persons by Level of Education (percentage) - Both Sexes	10
4A. Historical table of Currently Employed persons by Level of Education (percentage) - Male	11
4B. Historical table of Currently Employed persons by Level of Education (percentage) - Female	11
5. Historical table of Currently Employed persons by Employment Status (percentage) - Both Sexes	12
5A. Historical table of Currently Employed persons by Employment Status (percentage) - Male	13
5B. Historical table of Currently Employed persons by Employment Status (percentage) - Female	13
6. Currently employed persons by Industry group – Both sexes (Based on ISIC third revision)	14
6A. Currently employed persons by Industry group – Male (Based on ISIC third revision)	15
6B. Currently employed persons by Industry group – Female (Based on ISIC third revision)	16
6C. Historical table of currently employed population by major industry group - Both sexes	17
6D. Historical table of currently employed population by major industry group (percentage) - Both sexes	17
7. Currently employed persons by Occupation group – Both sexes (Based on ISCO 88)	18
7A. Currently employed persons by Occupation group – Male (Based on ISCO 88)	19
7B. Currently employed persons by Occupation group – Female (Based on ISCO 88)	19
8. Currently Employed persons by hours per week actually worked at the main job and Major Industrial group (percentage) - Both Sexes	20
9. Historical table of Currently Unemployed persons by Age Groups (percentage) - Both Sexes	21
9A. Historical table of Currently Unemployed persons by Age Groups (percentage) - Male	22
9B. Historical table of Currently Unemployed persons by Age Groups (percentage) - Female	22
10. Historical table of Currently Unemployed persons by Level of Education (percentage) - Both Sexes	23
10A. Historical table of Currently Unemployed persons by Level of Education (percentage) - Male	24
10B. Historical table of Currently Unemployed persons by Level of Education (percentage) – Female	24
11. Currently Unemployed Persons by Sex and Duration of Unemployment	25
12. Standard error and coefficient of variation of selected variables	26

Appendix 1: Explanatory Notes

Appendix 2: Alternative estimates of employment, unemployment and labour force characteristics

Appendix 3: Survey schedule

Introduction

Sri Lanka Labour Force Survey was designed to measure the levels and trends of employment, unemployment and Labour force in Sri Lanka. This Survey is being conducted quarterly, since the first quarter of 1990.

The field work of the survey for the third quarter 2006 was done in July, August and September 2006. However, in 2006, even though we planned to conduct the labour force survey in Northern and Eastern provinces, the survey was not started in January as scheduled. But, we were able to start the survey work there in February. However, due to the prevailing situation in the country, there were some delays of completing survey work in Northern & Eastern provinces on scheduled time. Therefore, the national level estimates based on the data collected in the third quarter does not cover the Northern & Eastern provinces. However, 2005 Labour force survey covered all 25 districts in the island, and therefore, for the comparison purposes, data presented in this report for previous years is based on the domain which exclude Northern and Eastern provinces. Further, some selected labour force key indicators are provided for the same domains which excludes Northern and Eastern provinces.

Labour force participation rate

Labour Force: Number of persons who were employed or unemployed during the reference week

Labour force participation rate: Labour force expressed as a percentage of population age 10 yr. & over

Table 1: Economically active population by sex and sector- Third Quarter 2006

Sector	Household population (10 years & over)	Economically active population					
		Total	%	Male	%	Female	%
Total	14988913	7601845	100.0	4849763	63.8	2752082	36.2
Urban	1902425	857821	100.0	581042	67.7	276779	32.3
Rural	13086488	6744024	100.0	4268721	63.3	2475303	36.7

Table 2: Inactive population by sex and sector- Third Quarter 2006

Sector	Household population (10 years & over)	Not in labour force					
		Total	%	Male	%	Female	%
Total	14988913	7387068	100.0	2282427	30.9	5104641	69.1
Urban	1902425	1044604	100.0	303991	29.1	740614	70.9
Rural	13086488	6342464	100.0	1978437	31.2	4364027	68.8

Table 3: Labour Force Participation Rate by sex

Year	Labour force participation rate		
	Total	Male	Female
2000	50.3	67.2	33.9
2001	48.8	66.2	31.9
2002	50.3	67.9	33.6
2003	49.7	67.5	32.6
2004	49.6	67.2	33.0
2005	49.3	67.3	32.6
2006Q1	51.7	69.3	35.5
2006Q2	51.1	68.4	35.4
2006 Q3	50.7	68.0	35.0

Table 3 provides the information on labour force participation rates since year 2000. As can be seen from this table, male participation rate is now fluctuating around 68 percent. The female participation rate fluctuates around 35 percent.

The survey results revealed that, the estimated total working age population was about 14.9 million persons in 2006 third quarter, of which nearly 7.6 million (51.0 percent) were economically active. Of the total estimated economically active population, 64 percent were males and 36 percent were females while of the economically inactive population, 31 percent were males and 69 percent were females.

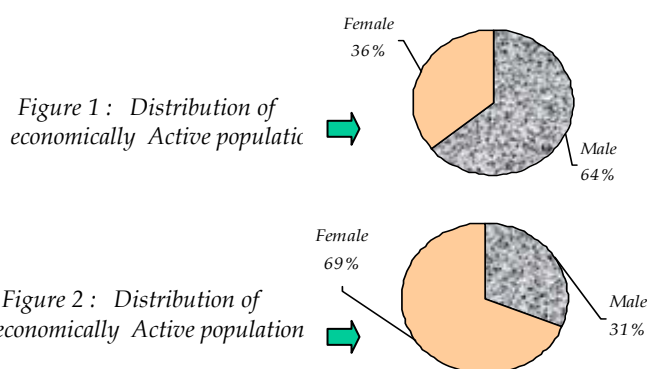


Table 4: Labour Force Participation Rate by sex- Third Quarter 2006

Age group	Sex		
	Total	Male	Female
Total	50.7	68.0	35.0
15 - 19	23.1	27.8	18.3
20 - 24	64.4	81.2	49.3
25 - 29	69.4	95.2	46.3
30 - 39	70.2	96.5	48.1
40+	55.2	76.7	36.1

Table 4 provides the labour force participation rates by sex and age groups. Males in age group of (30 - 39) yrs shows the highest labour force participation rate (96.5%), while females in the age group of (20 - 24) yrs shows the highest participation rate (49.3 %) among females.

Employment

Employed: Persons who are engaged in some kind of work for pay or profit or family gain during the reference week.

The total number of employed persons in Sri Lanka is estimated as about 7 million in the third quarter 2006. Of this, 65 percent were males and 35 percent were females.

Table 5: Distribution of Employed population by main industry, 2006 Jan - Sep.

Year 2006	Major industry group			
	Total	Agriculture	Industry	Services
Jan-Feb-March	7136267 (100.0)	2347886 (32.9)	1853595 (26.0)	2934786 (41.1)
Feb-March-April	7147014 (100.0)	2343842 (32.8)	1795646 (25.1)	3007526 (42.1)
March-April-May	7131207 (100.0)	2399029 (33.6)	1805815 (25.3)	2926363 (41.0)
April-May-June	7022019 (100.0)	2319676 (33.0)	1795515 (25.6)	2906828 (41.4)
May-June-July	7060476 (100.0)	2266637 (32.1)	1899272 (26.9)	2894568 (41.0)
June-July-Aug	7019675 (100.0)	2127823 (30.3)	1905125 (27.1)	2986727 (42.5)
July-Aug-Sept.	7111982 (100.0)	2122239 (29.8)	2017518 (28.4)	2972225 (41.8)

Figure 3: Distribution of Employed population by main industry - Third quarter 2006.

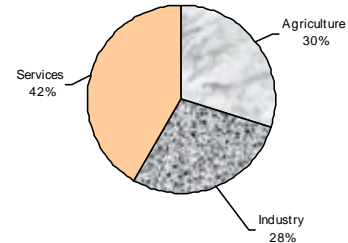


Table 5 shows the percentage distribution of employed population by main industry for the period of January to September. Of the total estimated employed population, 42 percent was reported as services sector employment, where this share is 30 percent for agriculture sector and 28 percent for industry sector, when 2006 third quarter is considered.

However, it should be noted that, there is no statistically significant difference between these employment figures reported in 2006 (in different time periods), when *sampling error** is considered (as in table 5).

Note: The tabulation groups based on ISIC (Rev.3) are indicated as A,B,C.....Q..

Agriculture

1. Agriculture (A)
2. Forestry and Fishery (B)

Industries

1. Manufacturing (D)
2. Construction
3. Mining & Quarrying
4. Electricity, Gas and Water supply

Services

1. Wholesale and Retail Trade, Repair of Motor Vehicles, Motorcycles and Personal and Household Goods
2. Hotels and Restaurants
3. Transport, Storage and Communication
4. Financial Intermediation and Real Estate, Renting and Business Activities
5. Public Administration and Defence, Compulsory Social Security

6. Education
7. Health and Social work
8. Other Community, Social and Personal Service Activities
9. Private Households with Employed Persons
10. Miscellaneous Labour work
11. Extra Territorial Organizations & bodies
12. Industries not adequately described

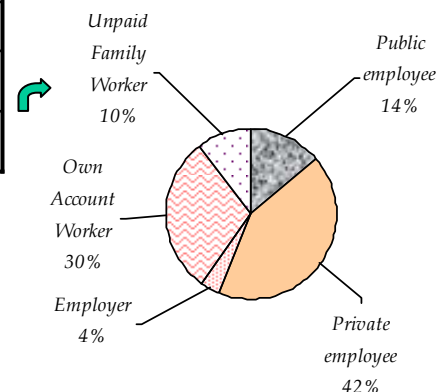
Table 6: Percentage distribution of employment status and sex - Third quarter 2006.

Employment status	Total		Sex			
	No	%	Male No	Male %	Female No.	Female %
Total	7111982	100.0	4628710	100.0	2483272	100.0
Employee	3991606	56.1	2588034	55.9	1403572	56.5
Public	997702	14.0	601617	13.0	396085	16.0
Private	2993905	42.1	1986417	42.9	1007488	40.6
Employer	257158	3.6	233768	5.1	23390	0.9
Own account worker	2138274	30.1	1597245	34.5	541029	21.8
Unpaid family worker	724943	10.2	209663	4.5	515280	20.8

This also reveals that nearly 20 percent of employed females are unpaid family workers, while this percentage for males is 4.5 percent. On the other hand, 35 percent of employed males are own account workers, and same percentage for female is about 22 percent. This also confirms that, the percentage share of unpaid family workers is higher among females, and this is different for own account workers. It is also clear that, percentage of female employees those who are engaged in the public sector activities are higher than that of males.

As can be seen from the distribution of employed population by employment status, table 6 indicates that out of the total employed persons, nearly 56 percent belongs to the "employee" category.

Figure 4: Percentage distribution of employment status and sex - Third quarter 2006.

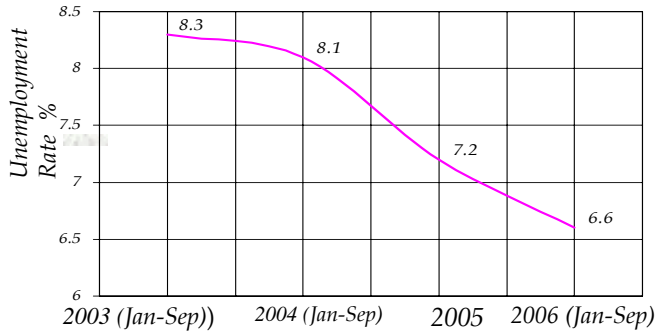


Unemployment

Unemployment Rate : The number of unemployed persons as a percentage of the labour force

Unemployed : Persons who are seeking and available for work, but had no employment during the reference period

Figure 5 : Unemployment Rates (2003-2006) (Jan-Sep)



The number of unemployed persons is estimated as about 500,000 during the third quarter 2006. The unemployment rate for the third quarter 2006 is reported as 6.4 percent and it is clear that, the declining trend of unemployment has continued in the 2006 third quarter as well.

It is very important to notice that, there is no statistically significant difference between the unemployment rates reported during 2006 (in different time periods), when *sampling error** is considered.

However, the declining trend of unemployment has continued, and there is a significant decrease of unemployment rates in 2006 when compared with the unemployment rates for 2003, 2004, and 2005. This scenario is described in figure 5.

Table 7 : Unemployment rate by year & sex

Year	Unemployment rate		
	Total	Male	Female
2000	7.6	5.8	11.1
2001	7.9	6.2	11.5
2002	8.8	6.6	12.9
2003	8.1	6.0	12.3
2004	8.1	6.0	12.1
2005	7.2	5.3	10.7
2006			
Jan-Feb-March	6.8	4.9	10.3
Feb-March-April	6.6	4.7	9.8
March-Apr-May	6.3	4.5	9.4
April-May-June	6.4	5.1	8.8
May-June-July	6.3	4.8	9.0
June-July-August	6.6	4.8	9.7
July-Aug-Sept	6.4	4.6	9.8

Table 8 : Unemployment rate by age group and sex - Third quarter 2006

Age group	Sex		
	Total	Male	Female
Total	6.4	4.6	9.8
15 - 19	20.7	17.4	25.8
20 - 24	21.5	16.9	28.2
25 - 29	11.9	7.1	20.8
30 +	1.8	1.3	2.9

* *Sampling error :*

When a sample, rather than the entire population, is surveyed, estimates differ from the true population values they represent. This difference, or sampling error, occurs by chance, and its variability is measured by the standard error of the estimate. **For more detail, please refer the explanatory note on the labour force link in the DCS website.**

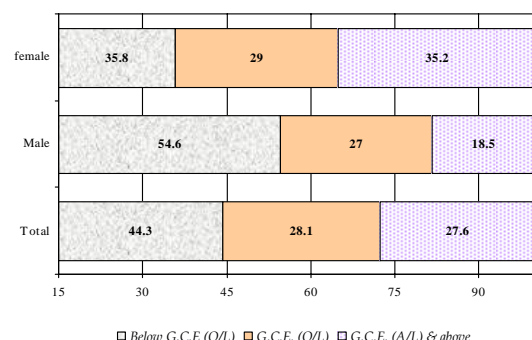
Table 9: Percentage distribution of unemployed population by level of education - Third Quarter 2006

Sex & sector	Level of education			
	Total	Below G.C.E. (O/L)	G.C.E. (O/L)	G.C.E. (A/L) & above
Total unemployed	100.0	44.3	28.1	27.6
Male	100.0	54.6	27.0	18.5
Female	100.0	35.8	29.0	35.2

As can be seen from table 8, the unemployment rate reported for females is 9.8 percent and 4.6 percent for males. However, the unemployment rate among the youth (age 20 - 24 yrs) is still high and it was reported as 21.5 percent.

It also reveals that, the unemployment among the educated youth females (G.C.E(A/L) and above) is higher than that of males .

Figure 6: Percentage distribution of unemployed population by level of education - Third Quarter 2006



**TABLE 1 - HISTORICAL TABLE OF LABOUR FORCE STATUS (CURRENT) OF THE HOUSEHOLD POPULATION,
10 YEARS OF AGE AND OVER - BOTH SEXES**

YEAR	HOUSEHOLD POPULATION (10 YEARS & OVER)	LABOUR FORCE						NOT IN LABOUR FORCE NUMBER
		TOTAL LABOUR FORCE	LABOUR FORCE PARTICI: RATE(%)	EMPLOYED		UNEMPLOYED		
				NUMBER	RATE (% TO TOTAL LABOUR FORCE)	NUMBER	RATE (% TO TOTAL LABOUR FORCE)	
1990	11573941	6001148	51.9	5047354	84.1	953794	15.9	5572793
1991	11795793	5877198	49.8	5015517	85.3	861680	14.7	5918596
1992	12058463	5808062	48.2	4962105	85.4	845957	14.6	6250400
1993	12278055	6032383	49.1	5201474	86.2	830910	13.8	6245675
1994	12492850	6078863	48.7	5281272	86.9	797591	13.1	6413985
1995	12736185	6106138	47.9	5357117	87.7	749021	12.3	6630048
1996	12831240	6241889	48.6	5537285	88.7	704604	11.3	6589365
1997	12870791	6266160	48.7	5607881	89.5	658279	10.5	6604630
1998	12881790	6660520	51.7	6049238	90.8	611285	9.2	6221274
1999	13169250	6673487	50.7	6082641	91.2	590846	8.9	6495782
2000	13564660	6827312	50.3	6310145	92.4	517168	7.6	6737345
2001	13870479	6772834	48.8	6235588	92.1	537246	7.9	7097644
2002	14201396	7145382	50.3	6519415	91.2	625967	8.8	7056014
*2003	15651479	7653716	48.9	7012755	91.6	640961	8.4	7997763
** 2004	16593431	8061354	48.6	7394029	91.7	667324	8.3	8532077
*** 2005	16870976	8141347	48.3	7518007	92.3	623341	7.7	8729628
# 2006 1st Q	14758669	7627761	51.7	7081435	92.8	546326	7.2	7130908
# 2006 2nd Q	14779182	7549361	51.1	7073844	93.7	475516	6.3	7229821
# 2006 3rd Q	14988913	7601845	50.7	7111982	93.6	489863	6.4	7387068

Note: The normal Labour Force Survey programme was not implemented in 2005 due to the Tsunami - 2004. However a special labour force survey was conducted in August 2005 and the estimates based on this special survey are given under year 2005.

(Up to 2002 fourth quarter, both Northern & Eastern provinces are excluded from the estimates.)

* - Including Eastern province but Excluding Northern province

** - Excluding Mulathivu, Kilinochchi districts.

*** - All the districts are included

- Excluding Northern & Eastern provinces

TABLE 1A - HISTORICAL TABLE OF LABOUR FORCE STATUS (CURRENT) OF THE HOUSEHOLD POPULATION, 10 YEARS OF AGE AND OVER - MALE

YEAR	HOUSEHOLD POPULATION (10 YEARS & OVER)	LABOUR FORCE						NOT IN LABOUR FORCE NUMBER
		TOTAL LABOUR FORCE	LABOUR FORCE PARTICI: RATE(%)	EMPLOYED		UNEMPLOYED		
				NUMBER	RATE (% TO TOTAL LABOUR FORCE)	NUMBER	RATE (% TO TOTAL LABOUR FORCE)	
*1993	6109486	3989443	65.3	3601779	90.3	387663	9.7	2120044
*1994	6228064	4072937	65.4	3678648	90.3	394289	9.7	2155127
*1995	6318003	4068608	64.4	3700951	91.0	367656	9.0	2249395
*1996	6373670	4200886	65.9	3857147	91.8	343741	8.2	2172784
*1997	6372365	4184248	65.6	3862087	92.3	322168	7.7	2188110
*1998	6344453	4281996	67.5	4004504	93.5	277491	6.5	2062456
*1999	6506662	4402713	67.7	4107497	93.3	295217	6.7	2103953
*2000	6702871	4501597	67.2	4241477	94.2	260120	5.8	2201274
*2001	6837264	4529016	66.2	4248877	93.8	280139	6.2	2308248
*2002	6935012	4705586	67.9	4395164	93.4	310421	6.6	2229427
**2003	7657368	5144206	67.2	4833483	94.0	310723	6.0	2513162
***2004	8049643	5372897	66.7	5049426	94.0	323471	6.0	2676746
****2005	8103016	5436362	67.1	5134765	94.5	301597	5.5	2666654
* 2006 1st Q	7081764	4904351	69.3	4634156	94.5	270196	5.5	2177412
* 2006 2nd Q	7036024	4809554	68.4	4572623	95.1	236931	4.9	2226470
* 2006 3rd Q	7132190	4849763	68.0	4628710	95.4	221053	4.6	2282427

TABLE 1B - HISTORICAL TABLE OF LABOUR FORCE STATUS (CURRENT) OF THE HOUSEHOLD POPULATION, 10 YEARS OF AGE AND OVER - FEMALE

YEAR	HOUSEHOLD POPULATION (10 YEARS & OVER)	LABOUR FORCE						NOT IN LABOUR FORCE NUMBER
		TOTAL LABOUR FORCE	LABOUR FORCE PARTICI: RATE(%)	EMPLOYED		UNEMPLOYED		
				NUMBER	RATE (% TO TOTAL LABOUR FORCE)	NUMBER	RATE (% TO TOTAL LABOUR FORCE)	
*1993	6168572	2042941	33.1	1599695	78.3	443247	21.7	4125631
*1994	6264782	2005927	32.0	1602625	79.9	403302	20.1	4258857
*1995	6418183	2037530	31.7	1656166	81.3	381364	18.7	4380652
*1996	6457583	2041002	31.6	1680138	82.3	360864	17.7	4416583
*1997	6498427	2081906	32.0	1745794	83.9	336112	16.1	4416521
*1998	6537344	2378526	36.4	2044732	86.0	333795	14.0	4158818
*1999	6662613	2270782	34.1	1975153	87.0	295629	13.0	4392047
*2000	6861794	2325716	33.9	2068667	89.0	257048	11.0	4536078
*2001	7033214	2243818	31.9	1986711	88.5	257107	11.5	4789396
*2002	7266384	2439796	33.6	2124250	87.1	315546	12.9	4826588
**2003	7994111	2509510	31.4	2179272	86.8	330238	13.2	5484600
***2004	8543788	2688457	31.5	2344604	87.2	343853	12.8	5855331
**** 2005	8767960	2704985	30.9	2383241	88.1	321744	11.9	6062975
* 2006 1st Q	7676905	2723410	35.5	2447279	89.9	276130	10.1	4953496
* 2006 2nd Q	7743158	2739807	35.4	2501221	91.3	238585	8.7	5003351
* 2006 3rd Q	7856723	2752082	35.0	2483272	90.2	268810	9.8	5104641

* - Excluding Northern and Eastern provinces

** - Including Eastern province but Excluding Northern province

*** - Excluding Mulathivu, Kilinochchi districts.

**** - All the districts are included

TABLE 2 - LABOUR FORCE STATUS (CURRENT) OF THE HOUSEHOLD POPULATION 10 YEARS OF AGE AND OVER ,BY AGE - BOTH SEXES

(2006 3rd quarter)

AGE	HOUSEHOLD POP: (10 YEARS & OVER)	LABOUR FORCE						NOT IN LABOUR FORCE NUMBER
		TOTAL LABOUR FORCE	LABOUR FORCE PARTICI: RATE(%)	EMPLOYED		UNEMPLOYED		
				NUMBER	RATE (% TO TOTAL LABOUR FORCE)	NUMBER	RATE (% TO TOTAL LABOUR FORCE)	
ALL AGES	14988913	7601845	50.7	7111982	93.6	489863	6.4	7387068
10 - 14 YRS	*	*	*	*	*	*	*	*
15 - 19 YRS	1590747	368124	23.1	292006	79.3	76118	20.7	1222623
20 - 24 YRS	1400410	901634	64.4	708105	78.5	193529	21.5	498776
25 - 29 YRS	1464168	1016097	69.4	894673	88.1	121424	11.9	448071
30 - 39 YRS	2477499	1738213	70.2	1681976	96.8	56237	3.2	739286
40 + YRS	6457636	3562457	55.2	3521005	98.8	41451	1.2	2895179

* Reliable estimates cannot be provided.

TABLE 2A - LABOUR FORCE STATUS (CURRENT) OF THE HOUSEHOLD POPULATION 10 YEARS OF AGE AND OVER ,BY AGE - MALE

(2006 3rd quarter)


AGE	HOUSEHOLD POP: (10 YEARS & OVER)	LABOUR FORCE						NOT IN LABOUR FORCE NUMBER
		TOTAL LABOUR FORCE	LABOUR FORCE PARTICI: RATE(%)	EMPLOYED		UNEMPLOYED		
				NUMBER	RATE (% TO TOTAL LABOUR FORCE)	NUMBER	RATE (% TO TOTAL LABOUR FORCE)	
ALL AGES	7132190	4849763	68.0	4628710	95.4	221053	4.6	2282427
10 - 14 YRS	*	*	*	*	*	*	*	*
15 - 19 YRS	813549	225881	27.8	186517	82.6	39364	17.4	587668
20 - 24 YRS	662354	537593	81.2	446697	83.1	90895	16.9	124761
25 - 29 YRS	691640	658346	95.2	611406	92.9	46940	7.1	33294
30 - 39 YRS	1128713	1088852	96.5	1068274	98.1	20579	1.9	39860
40 + YRS	3037281	2328595	76.7	2305319	99.0	23275	1.0	708686

TABLE 2B - LABOUR FORCE STATUS (CURRENT) OF THE HOUSEHOLD POPULATION 10 YEARS OF AGE AND OVER ,BY AGE - FEMALE

(2006 3rd quarter)

AGE	HOUSEHOLD POP: (10 YEARS & OVER)	LABOUR FORCE						NOT IN LABOUR FORCE NUMBER
		TOTAL LABOUR FORCE	LABOUR FORCE PARTICI: RATE(%)	EMPLOYED		UNEMPLOYED		
				NUMBER	RATE (% TO TOTAL LABOUR FORCE)	NUMBER	RATE (% TO TOTAL LABOUR FORCE)	
ALL AGES	7856723	2752082	35.0	2483272	90.2	268810	9.8	5104641
10 - 14 YRS	*	*	*	*	*	*	*	*
15 - 19 YRS	777198	142243	18.3	105489	74.2	36754	25.8	634955
20 - 24 YRS	738056	364042	49.3	261408	71.8	102634	28.2	374015
25 - 29 YRS	772528	357751	46.3	283268	79.2	74484	20.8	414777
30 - 39 YRS	1348786	649361	48.1	613702	94.5	35659	5.5	699426
40 + YRS	3420355	1233862	36.1	1215686	98.5	18176	1.5	2186492

* Reliable estimates cannot be provided due to small cell sizes.

 These figures are to be treated with caution as the corresponding CV (Coefficient of variation) values are high.

**TABLE 3 - HISTORICAL TABLE OF CURRENTLY EMPLOYED PERSONS BY AGE GROUPS
(PERCENTAGE) - BOTH SEXES**

Year	All Ages	Age Groups					
		10 - 14 YRS	15 - 19 YRS	20 - 24 YRS	25 - 29 YRS	30 - 39 YRS	40+ YRS
*1990	100.0	1.1	5.7	11.9	13.7	27.0	40.7
*1991	100.0	0.7	5.4	12.7	13.7	26.8	40.7
*1992	100.0	0.5	5.1	13.4	14.1	27.0	39.9
*1993	100.0	0.4	5.2	12.7	14.2	26.7	40.7
*1994	100.0	0.4	4.9	12.3	13.9	28.2	40.3
*1995	100.0	0.3	4.9	11.6	14.1	26.5	42.7
*1996	100.0	0.4	5.3	12.1	13.7	28.1	40.4
*1997	100.0	0.3	5.1	11.9	13.3	27.2	42.1
*1998	100.0	0.8	5.9	12.1	12.5	26.7	42.1
*1999	100.0	0.9	5.8	11.8	12.2	26.1	43.3
*2000	100.0	0.5	5.2	12.2	12.3	26.0	43.8
*2001	100.0	0.4	4.3	12.1	12.0	25.4	45.8
*2002	100.0	0.3	4.4	12.2	12.1	26.2	44.8
**2003	100.0	0.3	4.2	11.6	12.2	26.3	45.4
*** 2004	100.0	0.4	4.1	11.8	12.2	25.5	46.0
**** 2005	100.0	0.1	3.6	11.3	12.9	25.6	46.5
* 2006 1st Q	100.0	0.3	3.8	10.2	11.8	24.3	49.7
* 2006 2nd Q	100.0	0.5	4.1	10.6	12.5	24.1	48.2
* 2006 3rd Q	100.0	0.2	4.1	10.0	12.6	23.6	49.5

These figures are to be treated with caution as the corresponding CV (Coefficient of variation) values are high.

* - Excluding Northern and Eastern provinces

** - Including Eastern province but Excluding Northern province

*** - Excluding Mulathivu, Kilinochchi districts.

**** - All the districts are included

**TABLE 3A - HISTORICAL TABLE OF CURRENTLY EMPLOYED PERSONS BY AGE GROUPS
(PERCENTAGE) - MALE**

Year	All Ages	Age Groups					
		10 - 14 YRS	15 - 19 YRS	20 - 24 YRS	25 - 29 YRS	30 - 39 YRS	40+ YRS
*1990	100.0	1.0	5.7	11.7	13.3	26.3	42.1
*1991	100.0	0.6	5.2	12.6	13.2	25.7	42.8
*1992	100.0	0.4	4.7	13.2	13.9	26.2	41.6
*1993	100.0	0.4	4.8	11.5	14.8	26.2	42.2
*1994	100.0	0.4	4.7	11.9	13.5	27.2	42.2
*1995	100.0	0.3	4.8	11.0	14.0	26.0	43.8
*1996	100.0	0.4	5.0	11.7	13.4	27.8	41.7
*1997	100.0	0.3	4.8	11.1	13.0	27.1	43.6
*1998	100.0	0.7	5.6	11.9	12.3	26.2	43.3
*1999	100.0	0.7	5.8	11.8	11.8	25.7	44.1
*2000	100.0	0.4	5.2	12.0	12.3	25.4	44.7
*2001	100.0	0.3	4.1	12.0	12.1	25.0	46.4
*2002	100.0	0.3	4.2	11.8	11.8	26.2	45.8
**2003	100.0	0.3	3.9	11.4	12.7	25.7	46.1
***2004	100.0	0.3	3.9	11.5	12.6	25.0	46.6
****2005	100.0	0.2	4.1	11.1	13.3	25.2	46.1
* 2006 1st Q	100.0	0.3	3.4	10.7	11.8	23.9	49.9
* 2006 2nd Q	100.0	0.3	4.4	10.2	12.8	24.1	48.3
* 2006 3rd Q	100.0	0.2	4.0	9.7	13.2	23.1	49.8

**TABLE 3B - HISTORICAL TABLE OF CURRENTLY EMPLOYED PERSONS BY AGE GROUPS
(PERCENTAGE) - FEMALE**

Year	All Ages	Age Groups					
		10 - 14 YRS	15 - 19 YRS	20 - 24 YRS	25 - 29 YRS	30 - 39 YRS	40+ YRS
*1990	100.0	1.2	5.6	12.4	14.5	28.4	38.0
*1991	100.0	0.9	6.0	13.0	14.6	29.1	36.4
*1992	100.0	0.8	5.9	13.9	14.4	29.2	35.8
*1993	100.0	0.4	5.9	15.4	12.9	27.7	37.7
*1994	100.0	0.5	5.3	13.2	14.8	30.4	35.9
*1995	100.0	0.4	5.0	12.9	14.3	27.3	40.1
*1996	100.0	0.5	6.0	13.1	14.2	28.8	37.4
*1997	100.0	0.3	5.7	13.7	14.0	27.6	38.7
*1998	100.0	1.0	6.4	12.4	12.8	27.6	39.7
*1999	100.0	1.1	5.9	11.7	12.9	27.1	41.4
*2000	100.0	0.7	5.3	12.6	12.1	27.4	41.9
*2001	100.0	0.5	4.7	12.4	11.8	26.2	44.5
*2002	100.0	0.5	4.7	13.1	12.6	26.2	42.9
**2003	100.0	0.4	4.7	12.2	11.2	27.6	43.9
***2004	100.0	0.5	4.6	12.3	11.3	26.6	44.7
****2005	100.0	0.1	2.5	11.9	12.0	26.4	47.2
* 2006 1st Q	100.0	0.1	4.4	9.1	11.9	25.0	49.5
* 2006 2nd Q	100.0	0.8	3.5	11.4	11.9	24.2	48.2
* 2006 3rd Q	100.0	0.1	4.2	10.5	11.4	24.7	49.0

These figures are to be treated with caution as the corresponding CV (Coefficient of variation) values are high.

* - Excluding Northern and Eastern provinces

** - Including Eastern province but Excluding Northern province

*** - Excluding Mulathivu, Kilinochchi districts.

**** - All the districts are included

**TABLE 4 - HISTORICAL TABLE OF CURRENTLY EMPLOYED PERSONS BY LEVEL OF EDUCATION
(PERCENTAGE) - BOTH SEXES**

Year	Total	Level of education			
		Below Grade 5	Grades 5 - 9/ Years 6 - 10	GCE (O.L)/ NCGE	GCE (A.L)/ HNCE and above
*1990	100.0	31.9	45.1	16.0	7.0
*1991	100.0	31.6	44.8	15.6	7.9
*1992	100.0	29.9	44.9	16.5	8.7
*1993	100.0	28.5	45.1	16.9	9.5
*1994	100.0	28.2	45.4	17.5	8.8
*1995	100.0	26.8	44.9	18.0	10.3
*1996	100.0	29.5	43.3	16.9	10.3
*1997	100.0	27.9	44.0	17.6	10.5
*1998	100.0	26.8	45.0	17.2	11.0
*1999	100.0	25.4	45.7	18.0	10.9
*2000	100.0	25.1	46.3	16.7	11.9
*2001	100.0	22.7	46.1	17.7	13.5
*2002	100.0	24.6	45.6	15.8	14.0
**2003	100.0	24.5	46.2	15.9	13.3
***2004	100.0	24.3	44.7	16.8	14.2
**** 2005	100.0	20.6	45.8	18.2	15.4
* 2006 1st Q	100.0	22.1	47.3	16.8	13.8
* 2006 2nd Q	100.0	23.4	46.3	16.9	13.4
*2006 3rd Q	100.0	20.6	47.0	17.5	14.9

* - Excluding Northern and Eastern provinces

** - Including Eastern province but Excluding Northern province

*** - Excluding Mulathivu, Kilinochchi districts.

**** - All the districts are included

**TABLE 4A - HISTORICAL TABLE OF CURRENTLY EMPLOYED PERSONS BY LEVEL OF EDUCATION
(PERCENTAGE) - MALE**

Year	Total	Level of education			
		Below Grade 5	Grades 5 - 9/ Years 6 - 10	GCE (O.L)/ NCGE	GCE (A.L)/ HNCE and above
*1990	100.0	29.6	48.3	16.1	5.9
*1991	100.0	28.0	49.0	15.5	7.5
*1992	100.0	27.4	48.2	17.0	7.4
*1993	100.0	25.4	49.8	17.2	7.7
*1994	100.0	25.5	49.6	17.7	7.2
*1995	100.0	25.1	48.2	18.3	8.4
*1996	100.0	27.7	47.1	16.8	8.4
*1997	100.0	26.5	47.2	17.5	8.7
*1998	100.0	25.3	48.5	17.0	9.2
*1999	100.0	24.0	49.4	17.7	9.0
*2000	100.0	24.1	49.6	16.6	9.8
*2001	100.0	21.5	49.3	17.8	11.4
*2002	100.0	23.5	49.1	16.0	11.4
**2003	100.0	23.8	49.2	16.2	10.8
***2004	100.0	22.6	48.3	17.3	11.8
**** 2005	100.0	19.9	49.6	18.0	12.5
* 2006 1st Q	100.0	21.0	49.8	17.0	12.3
* 2006 2nd Q	100.0	21.9	50.4	16.4	11.3
* 2006 3rd Q	100.0	19.2	50.9	17.3	12.6

**TABLE 4B - HISTORICAL TABLE OF CURRENTLY EMPLOYED PERSONS BY LEVEL OF EDUCATION
(PERCENTAGE) - FEMALE**

Year	Total	Level of education			
		Below Grade 5	Grades 5 - 9/ Years 6 - 10	GCE (O.L)/ NCGE	GCE (A.L)/ HNCE and above
*1990	100.0	37.0	38.1	15.6	9.3
*1991	100.0	39.6	35.8	15.9	8.8
*1992	100.0	35.7	37.0	15.5	11.9
*1993	100.0	35.6	34.7	16.3	13.5
*1994	100.0	34.5	35.8	17.2	12.6
*1995	100.0	30.8	37.3	17.5	14.3
*1996	100.0	33.7	34.4	17.1	14.7
*1997	100.0	31.0	37.0	17.6	14.4
*1998	100.0	29.9	38.2	17.7	14.3
*1999	100.0	28.3	38.0	18.7	15.0
*2000	100.0	27.3	39.6	17.1	16.1
*2001	100.0	25.5	39.2	17.3	18.0
*2002	100.0	27.0	38.3	15.3	19.4
**2003	100.0	26.1	39.6	15.5	18.9
***2004	100.0	27.9	36.9	15.8	19.4
**** 2005	100.0	22.1	37.6	18.6	21.7
* 2006 1st Q	100.0	24.2	42.5	16.5	16.7
* 2006 2nd Q	100.0	26.2	38.9	17.7	17.2
* 2006 3rd Q	100.0	23.1	39.7	17.9	19.2

* - Excluding Northern and Eastern provinces

** - Including Eastern province but Excluding Northern province

*** - Excluding Mulathivu, Kilinochchi districts.

**** - All the districts are included

**TABLE 5 - HISTORICAL TABLE OF CURRENTLY EMPLOYED PERSONS BY EMPLOYMENT STATUS
(PERCENTAGE) - BOTH SEXES**

YEAR	TOTAL EMPLOYED	EMPLOYEE			EMPLOYER	OWN ACCOUNT WORKER	UNPAID FAMILY WORKER
		TOTAL	PUBLIC	PRIVATE			
*1990	100.0	55.2	21.5	33.7	1.8	29.2	13.8
*1991	100.0	62.4	22.9	39.5	2.2	25.4	10.0
*1992	100.0	60.1	20.0	40.0	1.6	27.1	11.2
*1993	100.0	60.0	17.4	42.8	2.0	27.4	10.4
*1994	100.0	60.7	16.4	44.3	2.3	27.2	9.8
*1995	100.0	59.8	15.6	44.3	2.5	28.3	9.4
*1996	100.0	60.8	15.0	45.8	2.3	26.8	10.0
*1997	100.0	59.4	15.1	44.3	2.3	28.8	9.4
*1998	100.0	55.6	14.5	41.2	1.9	28.9	13.6
*1999	100.0	57.5	14.4	43.1	2.0	28.3	12.2
*2000	100.0	56.3	13.4	42.9	2.3	28.4	13.0
*2001	100.0	58.6	13.9	44.7	2.3	28.5	10.6
*2002	100.0	57.9	13.4	44.5	2.8	28.6	10.7
**2003	100.0	57.9	13.5	44.4	2.6	29.6	9.9
***2004	100.0	59.4	13.0	46.4	2.9	28.3	9.4
**** 2005	100.0	59.3	13.3	46.1	3.1	29.7	7.9
* 2006 1st Q	100.0	55.3	13.4	41.9	3.2	31.6	9.9
* 2006 2nd Q	100.0	55.4	13.4	42.0	3.0	30.6	11.1
* 2006 3rd Q	100.0	56.1	14.0	42.1	3.6	30.1	10.2

* - Excluding Northern and Eastern provinces

** - Including Eastern province but Excluding Northern province

*** - Excluding Mulathivu, Kilinochchi districts.

**** - All the districts are included

**TABLE 5A - HISTORICAL TABLE OF CURRENTLY EMPLOYED PERSONS BY EMPLOYMENT STATUS
(PERCENTAGE) - MALE**

YEAR	EMPLOYEE					EMPLOYER	OWN ACCOUNT WORKER	UNPAID FAMILY WORKER
	TOTAL EMPLOYED	TOTAL	PUBLIC	PRIVATE				
*1990	100.0	55.2	19.7	35.5	2.3	34.6	7.9	
*1991	100.0	61.5	20.3	41.2	2.9	29.8	5.9	
*1992	100.0	58.7	18.4	40.3	2.0	32.2	7.2	
*1993	100.0	57.7	15.6	42.0	2.6	33.0	6.7	
*1994	100.0	59.3	15.9	43.4	2.9	32.0	5.9	
*1995	100.0	58.4	14.6	43.7	3.1	33.5	5.1	
*1996	100.0	59.5	14.1	45.4	3.2	31.2	6.1	
*1997	100.0	58.3	14.4	43.9	3.0	33.2	5.5	
*1998	100.0	55.8	14.1	41.7	2.5	34.8	6.8	
*1999	100.0	57.7	13.8	43.9	2.7	33.5	6.2	
*2000	100.0	56.6	12.6	44.0	3.1	33.8	6.5	
*2001	100.0	57.9	12.9	45.0	3.1	33.4	5.5	
*2002	100.0	57.5	12.6	44.8	3.7	34.0	4.8	
**2003	100.0	57.4	12.6	44.9	3.4	34.5	4.8	
***2004	100.0	58.9	11.9	47.0	3.9	32.7	4.5	
**** 2005	100.0	59.9	11.7	48.1	4.1	32.9	3.2	
* 2006 1st Q	100.0	55.8	12.3	43.4	4.4	36.3	3.6	
* 2006 2nd Q	100.0	56.4	12.2	44.1	4.0	34.4	5.2	
* 2006 3rd Q	100.0	55.9	13.0	42.9	5.1	34.5	4.5	

**TABLE 5B - HISTORICAL TABLE OF CURRENTLY EMPLOYED PERSONS BY EMPLOYMENT STATUS
(PERCENTAGE) - FEMALE**

YEAR	EMPLOYEE					EMPLOYER	OWN ACCOUNT WORKER	UNPAID FAMILY WORKER
	TOTAL EMPLOYED	TOTAL	PUBLIC	PRIVATE				
*1990	100.0	55.1	25.3	29.8	0.6	17.9	26.5	
*1991	100.0	64.5	28.6	35.9	0.7	16.0	18.9	
*1992	100.0	63.4	24.1	39.4	0.7	14.8	21.0	
*1993	100.0	65.6	21.0	44.6	0.7	15.0	18.7	
*1994	100.0	64.2	17.7	46.5	0.9	16.1	18.8	
*1995	100.0	63.2	17.6	45.5	1.1	16.7	19.1	
*1996	100.0	63.9	17.0	46.8	0.5	16.7	18.9	
*1997	100.0	61.8	16.7	45.2	0.9	19.0	18.3	
*1998	100.0	55.2	15.2	40.1	0.6	17.2	27.0	
*1999	100.0	57.2	15.6	41.5	0.6	17.5	24.8	
*2000	100.0	55.5	15.0	40.5	0.8	17.2	26.5	
*2001	100.0	60.1	15.9	44.1	0.5	18.1	21.3	
*2002	100.0	58.8	15.1	43.7	0.8	17.4	23.0	
**2003	100.0	59.0	15.7	43.3	0.9	18.8	21.3	
***2004	100.0	60.6	15.5	45.1	0.9	18.7	19.8	
**** 2005	100.0	58.3	16.6	41.6	0.9	22.7	18.2	
* 2006 1st Q	100.0	54.5	15.4	39.1	0.9	22.7	22.0	
* 2006 2nd Q	100.0	53.5	15.5	38.0	1.1	23.5	21.9	
* 2006 3rd Q	100.0	56.5	16.0	40.6	0.9	21.8	20.8	

* - Excluding Northern and Eastern provinces

** - Including Eastern province but Excluding Northern province

*** - Excluding Mulathivu, Kilinochchi districts.

**** - All the districts are included

Table 6 - Currently Employed person by Industry group (Based on ISIC Third Revision)

Year	Industry group														
	Total	1	2	3	4	5	6	7	8	9	10	11	12	13	14
*2002	6519415	2247602	1072720	386475	838796	117556	309553	168973	524724	227785	82260	110390	93252	317121	22208
**2003	7012755	2384397	1156682	454810	867131	121627	363393	191390	541070	262440	98107	110827	75858	333477	51548
***2004	7394029	2474725	1307357	474090	910770	120552	417340	175633	535064	273628	103966	122395	68813	323277	86419
****2005	7518007	2306039	1385374	542639	904008	138924	484999	233736	512819	297437	129237	133537	53314	324440	71504
* 2006 1st Q	7081435	2346321	1332735	530161	974771	125906	404715	235820	406017	239391	110249	108934	90721	160726	14966
* 2006 2nd Q	7073844	2423036	1249792	541434	884615	149599	403798	212971	368187	302943	91073	140764	90030	193322	22281
* 2006 3rd Q	7111982	2122239	1485770	531747	962062	125715	437725	244160	435800	288526	121672	100798	78593	147340	29834

These figures are to be treated with caution as the corresponding CV (Coefficient of variation) values are high.

Industry group

- | | |
|--|--|
| 1 Agriculture Forestry and Fishery (A,B) | 8 Public Administration and Defence,Compulsory Social Security (L) |
| 2 Manufacturing (D) | 9 Education (M) |
| 3 Construction, Mining & Quarrying ,
Electricity,Gas and Water supply (C,E,F) | 10 Health and Social work (N) |
| 4 Wholesale and Retail Trade,Repair of Motor Vehicles,
Motorcycles and Personal and Household Goods (G) | 11 Other Community,Social and Personal Service Activities
Extra Teritorial Organizations & bodies (O,Q) |
| 5 Hotels and Restaurants (H) | 12 Private Households with Employed Persons (P) |
| 6 Transport, Storage and Communication (I) | 13 Miscellaneous Labour work |
| 7 Financial Intermediation and Real Estate,
Renting and Business Activities (J,K) | 14 Industries not adequately described |

Note: The tabulation groups based on ISIC (Rev.3) are indicated as A,B,C.....Q. Due to the limitations on reliability (based on CV),some of these groups have been combined.

- * - Excluding Northern and Eastern provinces
- ** - Including Eastern province but Excluding Northern province
- *** - Excluding Mulathivu,Kilinochchi districts.
- **** - All the districts are included

Table 6A - Currently Employed person by Industry group (Based on ISIC Third Revision) - Male

	Total	Industry group							
		1	2	3	4	7	8	9	Other
*2002	4395164	1397423	569761	373516	656505	115203	387301	70813	824642
**2003	4833483	1529117	624791	436404	681185	138146	405572	98074	920194
***2004	5049426	1559301	710910	456049	721800	122372	392949	102645	983400
****2005	5134765	1482610	749993	519197	702048	171330	376877	83551	1049159
* 2006 1st Q	4634156	1370058	703602	519407	721440	171716	310315	66656	770961
* 2006 2nd Q	4572623	1427732	631178	527670	632208	147976	254795	106845	844219
* 2006 3rd Q	4628710	1260961	738603	510841	732320	167129	329438	97955	791463

Industry group

1 Agriculture Forestry and Fishery (A,B)

2 Manufacturing (D)

3 Construction, Mining & Quarrying ,
Electricity, Gas and Water supply (C,E,F)

4 Wholesale and Retail Trade, Repair of Motor Vehicles,
Motorcycles and Personal and Household Goods (G)

7 Financial Intermediation and Real Estate,
Renting and Business Activities (J,K)

8 Public Administration and Defence, Compulsory Social Security (L)

9 Education (M)

Other

Hotels and Restaurants (H)

Transport, Storage and Communication (I)

Health and Social work (N)

Other Community, Social and Personal Service Activities

Extra Territorial Organizations & bodies (O,Q)

Private Households with Employed Persons (P)

Miscellaneous Labour work

Industries not adequately described

Note: The tabulation groups based on ISIC (Rev.3) are indicated as A,B,C.....Q. Due to the limitations on reliability (based on CV), some of these groups have been combined.

* - Excluding Northern and Eastern provinces

** - Including Eastern province but Excluding Northern province

*** - Excluding Mulathivu, Kilinochchi districts.

**** - All the districts are included

Table 6B - Currently Employed person by Industry group (Based on ISIC Third Revision) - Female

	Total	Industry group							
		1	2	3	4	7	8	9	Other
*2002	2124250	850179	502959	12959	182291	53770	137423	156972	227697
**2003	2179272	855280	531891	18407	185946	53243	135498	164365	234642
***2004	2344604	915424	596447	18041	188970	53261	142116	170983	259362
****2005	2383241	823429	635382	23442	201959	62405	135942	213886	286796
* 2006 1st Q	2447279	976264	629133	10754	253331	64105	95701	172735	245257
* 2006 2nd Q	2501221	995304	618614	13764	252407	64995	113392	196098	246648
* 2006 3rd Q	2483272	861278	747167	20907	229742	77030	106362	190571	250215

Industry group

1 Agriculture Forestry and Fishery (A,B)

2 Manufacturing (D)

3 Construction, Mining & Quarrying ,
Electricity, Gas and Water supply (C,E,F)

4 Wholesale and Retail Trade, Repair of Motor Vehicles,
Motorcycles and Personal and Household Goods (G)

7 Financial Intermediation and Real Estate,
Renting and Business Activities (J,K)

8 Public Administration and Defence, Compulsory Social Security (L)

9 Education (M)

Other

Hotels and Restaurants (H)

Transport, Storage and Communication (I)

Health and Social work (N)


Other Community, Social and Personal Service Activities

Extra Territorial Organizations & bodies (O,Q)

Private Households with Employed Persons (P)

Miscellaneous Labour work

Industries not adequately described

 These figures are to be treated with caution as the corresponding CV (Coefficient of variation) values are high.

Note: The tabulation groups based on ISIC (Rev.3) are indicated as A,B,C,.....Q. Due to the limitations on reliability (based on CV), some of these groups have been combined.

* - Excluding Northern and Eastern provinces

** - Including Eastern province but Excluding Northern province

*** - Excluding Mulathivu, Kilinochchi districts.

**** - All the districts are included

Table 6C: Historical table of currently employed population by major industry group - Both sexes

Major Industry group	Year																
	*1992	*1993	*1994	*1995	*1996	*1997	*1998	*1999	*2000	*2001	*2002	**2003	***2004	****2005	*2006 1st Q	*2006 2nd Q	*2006 3rd Q
Total	4924130	5201904	5281279	5357120	5536216	5607868	6049388	6082449	6310247	6235588	6519415	7012755	7394029	7518007	7081435	7073844	7111982
Agriculture	2078560	2159187	2084733	1966793	2071764	2031902	2378572	2208066	2274153	2033343	2247602	2384397	2474725	2306039	2346321	2423036	2122239
Industry	991492	1024524	1046282	1188271	1217977	1354952	1325735	1330134	1490795	1491408	1459194	1611493	1781447	1928014	1862896	1791226	2017518
Services	1854078	2018193	2150265	2202056	2246475	2221014	2345081	2544249	2545299	2710837	2812619	3016866	3137857	3283954	2872217	2859583	2972225

Table 6D: Historical table of employed population by major industry group (percentage) - Both sexes

Major Industry group	Year																
	*1992	*1993	*1994	*1995	*1996	*1997	*1998	*1999	*2000	*2001	*2002	**2003	***2004	****2005	*2006 1st Q	*2006 2nd Q	*2006 3rd Q
Total	100.0	100.0	100.0	100.0	100.0	100.0	100.0	100.0	100.0	100.0	100.0	100.0	100.0	100.0	100.0	100.0	100.0
Agriculture	42.2	41.5	39.5	36.7	37.4	36.2	39.3	36.3	36.0	32.6	34.5	34.0	33.5	30.7	33.1	34.3	29.8
Industry	20.1	19.7	19.8	22.2	22.0	24.2	21.9	21.9	23.6	23.9	22.4	23.0	24.1	25.6	26.3	25.3	28.4
Services	37.7	38.8	40.7	41.1	40.6	39.6	38.8	41.8	40.3	43.5	43.1	43.0	42.4	43.7	40.6	40.4	41.8

Agriculture

1. Agriculture (A)
2. Forestry and Fishery (B)

Industries

1. Manufacturing (D)
2. Construction
3. Mining & Quarrying
4. Electricity, Gas and Water supply

Services

1. Wholesale and Retail Trade, Repair of Motor Vehicles, Motorcycles and Personal and Household Goods
2. Hotels and Restaurants
3. Transport, Storage and Communication
4. Financial Intermediation and Real Estate, Renting and Business Activities
5. Public Administration and Defence, Compulsory Social Security
6. Education
7. Health and Social work
8. Other Community, Social and Personal Service Activities
9. Private Households with Employed Persons
10. Miscellaneous Labour work
11. Extra Territorial Organizations & bodies
12. Industries not adequately described

* - Excluding Northern and Eastern provinces

** - Including Eastern province but Excluding Northern province

*** - Excluding Mulathivu, Kilinochchi districts.

**** - All the districts are included

Table 7 - Currently Employed person by Occupation group (Based on ISCO 88)

Year	Total	Occupation group										
		1	2	3	4	5	6	7	8	9	10	0
*2002	6519415	85553	352238	316763	283719	406992	510148	1579024	935477	373588	1608511	67402
**2003	7012755	88043	367654	341634	303828	328796	628729	1634289	1084436	419540	1735336	80470
***2004	7394029	99839	404410	366488	322697	420343	671461	1513636	1124715	460589	1951081	58770
****2005	7518007	120491	471200	403904	300322	515909	574416	1561884	1216224	531439	1760335	61883
*2006 1st Q	7081435	124707	335577	393351	270559	548642	523519	1617066	1198548	463319	1570286	35861
*2006 2nd Q	7018472	166892	401582	326942	269185	496285	507505	1732877	1108857	446921	1561426	55372
*2006 3rd Q	7111982	108327	401967	388295	293786	558466	507498	1457324	1287159	548965	1523113	37083

Occupation group

- 1 Senior Officials and Managers
- 2 Professionals
- 3 Technical and Associate Professionals
- 4 Clerks
- 5 Proprietors and Managers of Enterprises
- 6 Sales and Service workers

- 7 Skilled Agricultural and Fishery workers
- 8 Craft and Related workers
- 9 Plant and Machine operators and Assemblers
- 10 Elementary occupations
- 0 Unidentified

Note: It is to be noted here that these occupation groups are based on ISCO - 88, but they are not necessarily the **Major Groups** of ISCO - 88 classification

- * - Excluding Northern and Eastern provinces
- ** - Including Eastern province but Excluding Northern province
- *** - Excluding Mulathivu, Kilinochchi districts.
- **** - All the districts are included

Table 7A - Currently Employed person by Occupation group - Male (Based on ISCO 88)

Year	Total	Occupation group										
		1	2	3	4	5	6	7	8	9	10	0
*2002	4395164	67276	146656	215548	151511	318172	379695	1024190	596472	335568	1097444	62633
**2003	4833483	71574	161375	236263	167584	260270	464633	1109200	711720	368452	1205366	77047
***2004	4993403	75416	174521	250898	174982	341828	498477	1004912	726641	426469	1319258	
****2005	5134765	87788	187002	266866	159566	406137	418628	1013877	801448	484351	1249168	59935
*2006 1st Q	4634156	108038	123867	262774	152972	456925	313010	975632	758243	425306	1025869	31520
*2006 2nd Q	4572623	122594	158887	214422	142059	370967	307080	1053866	701891	399022	1046462	55372
*2006 3rd Q	4628710	85739	168672	267582	154939	434826	300501	899762	770274	477788	1033033	35595

Table 7B - Currently Employed person by Occupation group - Female (Based on ISCO 88)

Year	Total	Occupation group										
		1	2	3	4	5	6	7	8	9	10	0
*2002	2124250	18277	205582	101215	132209	88819	130453	554835	339005	38020	511066	4769
**2003	2179272	16469	206279	105370	136245	68526	164096	525090	372716	51088	529971	3423
***2004	2341857	24423	229889	115590	147715	78515	172984	508724	398074	34120	631823	
****2005	2383241	32702	284198	137038	140756	109772	155788	548007	414776	47088	511167	1949
*2006 1st Q	2447279	16669	211710	130577	117587	91717	210509	641434	440306	38013	544417	4341
*2006 2nd Q	2501221	44298	242695	112520	127126	125318	200425	679011	406965	47899	514964	
*2006 3rd Q	2483272	22588	233295	120713	138847	123640	206997	557562	516886	71177	490080	1487

Occupation group

1 Senior Officials and Managers

2 Professionals

3 Technical and Associate Professionals

4 Clerks

5 Proprietors and Managers of Enterprises

6 Sale and Service workers

7 Skilled Agricultural and Fishery workers

8 Craft and Related workers

9 Plant and Machine operators and Assemblers

10 Elementary occupations

0 Unidentified



These figures are to be treated with caution as the corresponding CV (Coefficient of variation) values are high.

Note: It is to be noted here that these occupation groups are based on ISCO - 88, but they are not necessarily the **Major Groups** of ISCO - 88 classification

* - Excluding Northern and Eastern provinces

** - Including Eastern province but Excluding Northern province

*** - Excluding Mulathivu, Kilinochchi districts.

**** - All the districts are included

TABLE 8 - CURRENTLY EMPLOYED PERSONS BY HOURS PER WEEK ACTUALLY WORKED AT THE MAIN JOB AND MAJOR INDUSTRIAL GROUP (PERCENTAGE) - BOTH SEXES

(2006 3rd quarter)

MAJOR INDUSTRIAL GROUP	TOTAL	0 *	1 - 9	10 - 19	20 - 29	30 - 39	40 - 49	50 & OVER
Total	100.0	6.5	1.5	4.7	8.8	13.8	34.3	30.5
1	100.0	9.0	1.8	7.9	13.8	18.6	33.1	15.7
2	100.0	4.5	1.3	4.4	8.4	10.5	36.8	34.2
3	100.0	9.2	1.2	3.1	8.3	13.5	35.5	29.2
4	100.0	2.6	1.1	3.6	6.0	7.9	27.6	51.3
5	100.0	2.1	1.7	2.1	5.7	5.2	17.4	65.8
6	100.0	6.7	0.3	3.1	4.2	8.3	26.3	51.1
7	100.0	6.8	0.2	0.8	3.3	7.0	51.3	30.6
8	100.0	2.2	0.2	1.2	0.7	4.1	59.2	32.3
9	100.0	16.3	5.4	5.7	8.2	44.8	16.1	3.6
10	100.0	2.6	..	0.8	1.0	3.8	45.0	46.8
11	100.0	6.5	4.0	2.0	14.9	14.7	31.9	26.0
12	100.0	4.4	..	1.2	5.4	11.5	20.3	57.2
13	100.0	8.1	2.7	7.0	14.9	28.2	30.7	8.4
14	100.0	9.4	57.2	33.3

* Has a job but not at work during the reference week

.. Negligible

Industry group

- | | |
|--|---|
| 1. Agriculture Forestry and Fishery (A,B) | 8. Public Administration and Defence,Compulsory Social Security (L) |
| 2. Manufacturing (D) | 9. Education (M) |
| 3. Construction, Mining & Quarrying ,
Electricity, Gas and Water supply (C,E,F) | 10. Health and Social work (N) |
| 4. Wholesale and Retail Trade, Repair of Motor Vehicles,
Motorcycles and Personal and Household Goods (G) | 11. Other Community, Social and Personal Service Activities
Extra Territorial Organizations & bodies (O,Q) |
| 5. Hotels and Restaurants (H) | 12. Private Households with Employed Persons (P) |
| 6. Transport, Storage and Communication (I) | 13. Miscellaneous Labour work |
| 7. Financial Intermediation and Real Estate,
Renting and Business Activities (J,K) | 14. Industries not adequately described |

Note: The tabulation groups based on ISIC (Rev.3) are indicated as A,B,C.....Q. Due to the limitations on reliability (based on CV), some of these groups have been combined.

**TABLE 9 - HISTORICAL TABLE OF CURRENTLY UNEMPLOYED PERSONS BY AGE GROUPS
(PERCENTAGE) - BOTH SEXES**

YEAR	TOTAL	AGE GROUPS				
		15 - 19 YRS	20 - 24 YRS	25 - 29 YRS	30 - 39 YRS	40 + YRS
*1990	100.0	20.3	40.3	19.3	13.2	7.1
*1991	100.0	19.3	42.2	16.7	15.8	6.0
*1992	100.0	19.2	40.9	20.4	13.4	6.1
*1993	100.0	20.4	38.5	18.9	15.5	6.8
*1994	100.0	22.4	41.2	15.6	15.5	5.5
*1995	100.0	21.1	38.2	20.1	15.1	5.5
*1996	100.0	24.0	39.3	18.1	14.3	4.3
*1997	100.0	22.5	41.5	19.0	12.7	4.3
*1998	100.0	21.9	40.8	17.6	13.6	6.0
*1999	100.0	23.9	40.5	17.2	12.5	5.9
*2000	100.0	19.5	44.4	18.4	11.9	5.8
*2001	100.0	21.2	45.4	17.8	10.4	5.1
*2002	100.0	19.8	47.1	16.6	11.0	5.5
**2003	100.0	19.9	45.8	17.2	11.6	5.6
***2004	100.0	18.1	45.9	17.4	11.7	6.8
**** 2005	100.0	19.5	44.8	16.4	12.2	7.1
*2006 1st Q	100.0	22.3	37.9	19.6	11.4	8.7
*2006 2nd Q	100.0	18.6	41.4	21.0	10.9	8.1
*2006 3rd Q	100.0	15.6	39.6	24.8	11.5	8.5

* - Excluding Northern and Eastern provinces

** - Including Eastern province but Excluding Northern province

*** - Excluding Mulathivu, Kilinochchi districts.

**** - All the districts are included

**TABLE 9A - HISTORICAL TABLE OF CURRENTLY UNEMPLOYED PERSONS BY AGE GROUPS
(PERCENTAGE) - MALE**

YEAR	TOTAL	AGE GROUPS				
		15 - 19 YRS	20 - 24 YRS	25 - 29 YRS	30 - 39 YRS	40+ YRS
*1990	100.0	23.8	41.2	16.1	9.6	9.2
*1991	100.0	23.0	42.6	15.1	11.7	7.7
*1992	100.0	21.8	42.7	18.5	10.0	7.1
*1993	100.0	24.0	39.5	16.0	12.7	8.0
*1994	100.0	24.3	40.8	13.3	13.4	8.6
*1995	100.0	22.3	38.2	19.0	12.9	7.6
*1996	100.0	27.2	39.6	16.9	10.9	5.4
*1997	100.0	25.0	41.5	17.2	11.5	4.8
*1998	100.0	27.7	39.6	16.5	9.5	6.7
*1999	100.0	27.6	40.6	14.3	9.3	8.2
*2000	100.0	24.0	46.4	15.2	9.1	5.3
*2001	100.0	25.4	46.3	15.0	7.1	6.2
*2002	100.0	22.2	49.1	13.5	8.3	6.9
**2003	100.0	22.7	47.6	14.8	8.3	6.6
***2004	100.0	20.8	45.4	15.4	10.1	8.3
**** 2005	100.0	21.8	44.3	15.0	12.5	6.3
*2006 1st Q	100.0	26.0	45.8	13.8	3.9	10.5
*2006 2nd Q	100.0	24.2	36.5	18.7	8.6	11.8
*2006 3rd Q	100.0	17.8	41.1	21.2	9.3	10.5

**TABLE 9B - HISTORICAL TABLE OF CURRENTLY UNEMPLOYED PERSONS BY AGE GROUPS
(PERCENTAGE) - FEMALE**

YEAR	TOTAL	AGE GROUPS				
		15 - 19 YRS	20 - 24 YRS	25 - 29 YRS	30 - 39 YRS	40+ YRS
*1990	100.0	17.0	39.4	22.2	16.6	5.0
*1991	100.0	16.3	42.0	18.0	19.2	4.6
*1992	100.0	16.7	39.1	22.2	16.9	5.3
*1993	100.0	12.8	34.1	23.7	21.8	7.7
*1994	100.0	16.7	37.6	21.4	20.6	3.9
*1995	100.0	19.9	38.3	21.2	17.2	3.4
*1996	100.0	21.0	39.0	19.2	17.4	3.2
*1997	100.0	20.1	41.6	20.7	13.8	3.8
*1998	100.0	17.1	41.8	18.6	17.0	5.4
*1999	100.0	20.2	40.5	20.0	15.6	3.7
*2000	100.0	15.1	42.3	21.5	14.8	6.3
*2001	100.0	16.7	44.5	20.9	14.1	3.8
*2002	100.0	17.5	45.1	19.5	13.7	4.2
**2003	100.0	17.2	44.1	19.4	14.7	4.6
***2004	100.0	15.7	46.4	19.3	13.3	5.3
**** 2005	100.0	17.3	45.3	17.6	11.9	7.8
*2006 1st Q	100.0	18.7	30.2	25.3	18.8	7.0
*2006 2nd Q	100.0	13.0	46.2	23.3	13.2	4.4
*2006 3rd Q	100.0	13.7	38.3	27.8	13.3	6.8

These figures are to be treated with caution as the corresponding CV (Coefficient of variation) values are high.

* - Excluding Northern and Eastern provinces

** - Including Eastern province but Excluding Northern province

*** - Excluding Mulathivu, Kilinochchi districts.

**** - All the districts are included

TABLE 10 - HISTORICAL TABLE OF CURRENTLY UNEMPLOYED PERSONS BY LEVEL OF EDUCATION (PERCENTAGE) - BOTH SEXES

YEAR	TOTAL	LEVEL OF EDUCATION			
		BELOW GRADE 5	GRADES 5 - 9/ YEARS 6 - 10	GCE(O/L) NCGE	GCE(A/L) HNCE AND ABOVE
*1990	100.0	8.5	49.7	26.5	15.4
*1991	100.0	9.0	45.7	30.3	15.1
*1992	100.0	9.2	50.5	27.0	13.7
*1993	100.0	8.3	44.9	28.7	18.0
*1994	100.0	8.6	44.9	28.3	18.2
*1995	100.0	5.5	47.1	29.1	18.4
*1996	100.0	7.9	47.1	26.1	19.0
*1997	100.0	5.7	44.7	28.2	21.4
*1998	100.0	5.8	44.2	27.1	22.9
*1999	100.0	4.4	41.9	29.2	24.5
*2000	100.0	3.1	45.6	26.0	25.3
*2001	100.0	3.6	40.7	27.3	28.4
*2002	100.0	4.7	40.7	25.2	29.4
**2003	100.0	4.8	40.2	26.1	28.9
***2004	100.0	5.4	36.6	26.2	31.7
**** 2005	100.0	4.5	37.2	28.6	29.7
*2006 1st Q	100.0	5.4	45.6	24.3	24.8
*2006 2nd Q	100.0	4.1	43.6	28.8	23.5
*2006 3rd Q	100.0	3.7	40.6	28.1	27.6

* - Excluding Northern and Eastern provinces

** - Including Eastern province but Excluding Northern province

*** - Excluding Mulathivu, Kilinochchi districts.

**** - All the districts are included



These figures are to be treated with caution as the corresponding CV (Coefficient of variation) values are high.

TABLE 10A - HISTORICAL TABLE OF CURRENTLY UNEMPLOYED PERSONS BY LEVEL OF EDUCATION (PERCENTAGE) - MALE

YEAR	TOTAL	LEVEL OF EDUCATION			
		BELOW GRADE 5	GRADES 5 - 9/ YEARS 6 - 10	GCE(O/L) NCGE	GCE(A/L) HNCE AND ABOVE
*1990	100.0	10.6	57.7	23.3	8.4
*1991	100.0	11.2	53.2	25.0	10.5
*1992	100.0	9.9	57.4	25.1	7.9
*1993	100.0	11.4	47.7	28.0	12.9
*1994	100.0	11.4	50.3	27.0	11.3
*1995	100.0	5.3	54.4	29.4	10.9
*1996	100.0	8.7	56.9	23.8	10.6
*1997	100.0	7.0	54.5	25.0	13.5
*1998	100.0	6.7	54.8	24.7	13.9
*1999	100.0	4.8	48.3	29.1	17.8
*2000	100.0	3.9	54.7	26.0	15.4
*2001	100.0	4.4	50.9	25.2	19.5
*2002	100.0	5.6	50.1	24.7	19.6
**2003	100.0	5.5	47.3	27.7	19.5
***2004	100.0	7.0	44.0	27.4	21.6
**** 2005	100.0	5.2	44.9	29.1	20.8
*2006 1st Q	100.0	8.4	50.7	25.5	15.4
*2006 2nd Q	100.0	5.5	50.7	27.8	15.9
*2006 3rd Q	100.0	5.1	49.5	27.0	18.5

TABLE 10B - HISTORICAL TABLE OF CURRENTLY UNEMPLOYED PERSONS BY LEVEL OF EDUCATION (PERCENTAGE) - FEMALE

YEAR	TOTAL	LEVEL OF EDUCATION			
		BELOW GRADE 5	GRADES 5 - 9/ YEARS 6 - 10	GCE(O/L) NCGE	GCE(A/L) HNCE AND ABOVE
*1990	100.0	6.4	42.2	29.5	21.9
*1991	100.0	7.1	39.6	34.5	18.8
*1992	100.0	8.5	43.6	28.9	19.4
*1993	100.0	5.7	42.5	29.4	22.5
*1994	100.0	6.9	39.6	29.6	24.9
*1995	100.0	5.7	40.0	28.8	25.5
*1996	100.0	7.1	37.6	28.3	27.0
*1997	100.0	4.5	35.3	31.3	28.9
*1998	100.0	5.1	35.4	29.1	30.5
*1999	100.0	4.0	35.5	29.3	31.2
*2000	100.0	2.3	36.3	26.1	35.3
*2001	100.0	2.6	29.7	29.7	38.0
*2002	100.0	3.9	31.4	25.6	39.1
**2003	100.0	4.0	33.5	24.6	37.8
***2004	100.0	3.9	29.7	25.0	41.3
**** 2005	100.0	4.0	29.9	28.1	38.0
*2006 1st Q	100.0	2.4	40.5	23.1	34.0
*2006 2nd Q	100.0	2.7	36.5	29.7	31.1
*2006 3rd Q	100.0	2.6	33.2	29.0	35.2

* - Excluding Northern and Eastern provinces

** - Including Eastern province but Excluding Northern province

*** - Excluding Mulathivu, Kilinochchi districts.

**** - All the districts are included



These figures are to be treated with caution as the corresponding CV (Coefficient of variation) values are high.

TABLE 11 - CURRENTLY UNEMPLOYED PERSONS BY SEX AND DURATION OF UNEMPLOYMENT

SEX	2006 3rd Quarter			
	TOTAL	DURATION		
		LESS THAN 6 MONTHS	6 TO LESS THAN 12 MONTHS	12 + MONTHS
BOTH SEXES	489863	138573	101534	249756
%	100.0	28.3	20.7	51.0
MALE	221053	64789	46636	109628
%	100.0	29.3	21.1	49.6
FEMALE	268810	73784	54898	140128
%	100.0	27.4	20.4	52.1

TABLE 12 - STANDARD ERROR AND COEFFICIENT OF VARIATION OF SELECTED VARIABLES

(3rd quarter 2006)

	Estimated Value	Standard Error	Coefficient of Variation (%)	Estimated Value (Ratio)	Standard Error	Coefficient of Variation (%)
General labour force characteristics						
Population (10 years & over)	14988913	212523	0.014	-	-	-
Employed Population	7111982	133257	0.019	-	-	-
Unemployed Population	489863	30071	0.061	-	-	-
Employment Rate	-	-	-	0.936	0.004	0.004
Unemployment Rate	-	-	-	0.064	0.004	0.061
Labour Force	7601845	135568	0.018	-	-	-
Not in Labour Force	7387068	135933	0.018	-	-	-
Employed persons by major industry Groups						
1	2122239	115179	0.054	-	-	-
2	1485770	66520	0.448	-	-	-
3	531747	31881	0.060	-	-	-
4	962062	45864	0.048	-	-	-
5	125716	14635	0.116	-	-	-
6	437726	27362	0.063	-	-	-
7	244160	21659	0.089	-	-	-
8	435800	28722	0.066	-	-	-
9	288526	23036	0.080	-	-	-
10	121672	14421	0.119	-	-	-
11	100798	12568	0.125	-	-	-
12	78593	16324	0.208	-	-	-
13	147340	18242	0.124	-	-	-
14	29834	6034	0.202	-	-	-
Unemployed persons by level of education						
Below grade 5	18276	4971	0.272	-	-	-
Grade 5 - 9/Year 6 - 10	198818	18244	0.092	-	-	-
G.C.E.(O/L)/N.C.G.E.	137492	14651	0.107	-	-	-
G.C.E.(A/L)/H.N.C.E. & above	135276	12562	0.093	-	-	-

Industry group

- | | |
|---|---|
| 1. Agriculture Forestry and Fishery (A,B) | 8. Public Administration and Defence,Compulsory Social Security (L) |
| 2. Manufacturing (D) | 9. Education (M) |
| 3. Construction, Mining & Quarrying ,
Electricity,Gas and Water supply (C,E,F) | 10. Health and Social work (N) |
| 4. Wholesale and Retail Trade,Repair of Motor Vehicles,
Motorcycles and Personal and Household Goods (G) | 11. Other Community,Social and Personal Service Activities
Extra Teritorial Organizations & bodies (O,Q) |
| 5. Hotels and Restaurants (H) | 12. Private Households with Employed Persons (P) |
| 6. Transport, Storage and Communication (I) | 13. Miscellaneous Labour work |
| 7. Financial Intermediation and Real Estate,
Renting and Business Activities (J,K) | 14. Industries not adequately described |

Explanatory Notes

Coverage

Sri Lanka Labour Force Survey was designed to measure the levels and trends of employment, unemployment and labour force in Sri Lanka. This survey is being conducted quarterly, since the first quarter of 1990.

This quarterly survey of households is conducted through a scientifically selected sample designed to represent the civilian non-institutional population. Respondents are interviewed to obtain information about the employment status etc. of each member of the household 10 years of age and older.

The field work of the survey is done during the third week of the each month, Monday through Sunday. This is known as the " survey week" . The inquiry relates to activity or status are referred in the preceding week of the survey week; referred to as the "reference week".

The concepts and definitions underlying labour force data are as follows.

Concepts and definitions

1. **Labour force** : The labour force is composed of the economically active population 10 years of age and over.
2. **The Economically Active Population** : is defined as those persons who are/were employed or unemployed during the reference period of the survey.
3. **Employed** : Persons, who during the reference period, worked as paid employees, employers, own account workers (self employed), or unpaid family workers are said to be employed. This includes persons with a job but not at work during the reference period.
4. **Unemployed** : Persons who are seeking and available for work, but had no employment during the reference period.
5. **Currently Economically Active** : A person who was employed or unemployed during the current reference period is considered to be currently economically active.
6. **Not in the Labour Force (not economically active)** : Persons who were neither working not available/looking for work are classified as "not in the labour force". Persons are not in the labour force for such reasons as: full time care of the household, full - time students, retired or old age, infirmed or disabled, or are not interested in working for one reason or another. Current and Usual definitions apply.

7. *Criteria for classification of underemployment*

In order to classify an employed persons as visibly underemployed,

(i) If the person has worked less than the normal duration in his/her main activity

In Sri Lanka scenario, 35 hours per week is taken as the cut-off point applicable to all workers, except government teachers. As in practice, though teachers do have a normal duration of work which is below the general cut-off point, they should be on a full time schedule according to the nature of their job. Further, those who do have a secondary job, or those who are employers, were considered as having worked the normal duration in their respective activity.

Therefore, if the person has worked less than the normal duration in his/her activity (as described above), then the person is further questioned to ascertain whether he/She is prepared and available for further work if provided. Such persons are considered underemployed in their respective employment.

(ii) If the person has worked more than the normal duration in his/her activity

If the person has worked even more than 35 hours as usually, but he has worked less than 35 hours actually in the reference period, only due to the off season or bad weather, such persons were also further questioned to check their underemployment situation, considering them as a special category.

8. *Informal Sector Employment*

In order to classify a person to be employed in informal sector employment, following information were used.

- (i) Registration of the organization
- (ii) Accounts keeping practices of the organization
- (iii) Total number of regular employees of the organization.

Reliability of the estimates

Statistics based on the quarterly labour force data are subject to both sampling and non-sampling errors. When a sample rather than the entire population is surveyed, there is a chance that the sample estimates may differ from the "true" population values they represent.

The exact differences, or sampling error, varies depending on the particular sample selected, and this variability is measured by the standard error of the estimate. There is about a 95 percent chance, or level of confidence, that an estimate based on a sample will differ by no more than 1.96 standard errors from the "true" population value, because of sampling error. Analyses relating to the Labour Force Survey are generally conducted at the 95 percent level of confidence.

For example, the confidence interval for the quarterly unemployment rate is on the order of ,

Estimated value *(of the unemployment rate)* \pm (standard error) * (1.96)

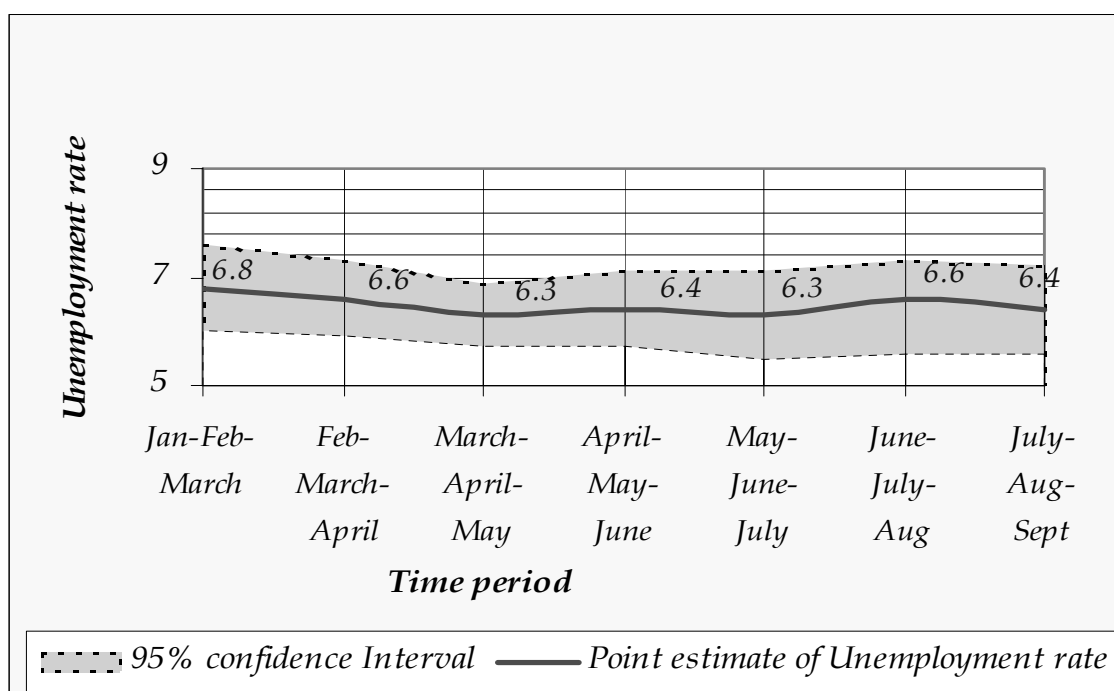
6.4 \pm (0.4) * (1.96)

(6.4 \pm 0.784)

This means, the 95 percent confidence interval on the quarterly unemployment rate could range from (5.6 to 7.2) . This implies that there is about 95 percent chance that the "true" unemployment rate lies within this interval. This range includes all the values range from 5.6 to 7.2 . When the comparison of this estimate is done between two quarters, if any of the value within the 95 percent confidence interval of one quarter overlaps with the confidence interval of the other , it means that the estimates of this two quarters *are not significantly different*.

Therefore, in each quarterly labour force report, a separate table is given including approximate standard errors for some selected variables, so that users could understand this statistical scenario clearly.

Unemployment rates and it's lower and upper limits 2006 (Jan-Sep)



As shown in the given figure, it is very clear that, there is no statistical significant differences between the quarterly unemployment rates reported in 2006, (since all the 95 percent confidence intervals overlap) when sampling error is considered.

Change in survey schedule

Current survey concepts and methods are very similar to those introduced at the beginning of the survey in 1990. However, some changes have been made over the years to improve the accuracy and usefulness of the data.

Beginning in January 2006, some improvements were made to the labour force survey schedule in order to fulfill the requirements of it's users and also to provide additional information for the planning purposes. This revision was made focusing on literacy, household economic activities, and informal sector employment and under employment etc.

Alternative Estimates of Employment, Unemployment and Labour Force Characteristics

◆ Official employment, unemployment and labour force characteristics are estimated at the Sri Lanka Labour Force Survey, based on the internationally comparable concepts and definitions recommended by the ILO. However the validity of the concepts and definitions used at the survey is questioned very often in some forums, for the appropriateness of these concepts and definitions in the Sri Lankan context.

The concepts and definitions, which were found to be controversial are as below.

(1) Number of Hours of Work :

A person who work **at least one hour** during the reference week, is considered **employed**, under these definitions.

(2) Working Age Population :

All persons of **age 10 years and over** are considered to be in the working age.

(3) Employment Status :

All, a) Paid employees, (those who work for wages/salaries).

b) Employers (who have at least one paid employee under them).

c) Own account workers (who carry out the economic activity without having any paid employees).

d) Unpaid family workers (who make their contribution to the economic activities carried out by their own household, without wages/salaries).

The validity of the above concepts and definitions is raised due to the following reasons.

(1) **Number of hours of Work** : Some point out that **one hour per week** is too low, to consider a person to be employed.

(2) **Working age Population** : Some point out that persons in the age group 10-14 yrs. are too young to consider to be in the working age.

(3) **Employment Status** : Some point out that 'unpaid family workers' may work in the family enterprise **without payment** because they have no other work, and so it is not appropriate to consider them as **employed**.

An attempt has been made to produce '**Alternative estimates of Employment, Unemployment and Labour Force Characteristics**,' by revising the original concepts and definitions so that the above issues are addressed as explained below.

The revisions made are,

(1) Number of Hours of Work :

Persons who work **20 hours or more per week only** are considered to be employed.

(2) Working Age Population :

Persons who are **over 15 yrs of age only** are considered to be in the working age.

(3) Unpaid Family Worker :

Unpaid family workers are **not** considered as employed. Those unpaid family workers who were reported to be seeking some other work are considered as **unemployed** and the rest of the unpaid family workers are considered as **economically inactive** (not in the labour force) so only, **a) paid employees b) employers and c) own account workers are considered to be employed**.

Following tables are based on the above alternative concepts and definitions.

TABLE 1 - LABOUR FORCE STATUS OF HOUSEHOLD POPULATION 15 YEARS & OVER (ALTERNATIVE ESTIMATES)

YEAR	HOUSEHOLD POPULATION (15 YEARS & OVER)	LABOUR FORCE						NOT IN LABOUR FORCE NUMBER
		TOTAL LABOUR FORCE	LABOUR FORCE PARTICI: RATE(%)	EMPLOYED		UNEMPLOYED		
				NUMBER	RATE (% TO TOTAL LABOUR FORCE)	NUMBER	RATE (% TO TOTAL LABOUR FORCE)	
*1998	11281913	5567813	49.4	4870332	87.5	697481	12.5	5714099
*1999	11582873	5632621	48.6	4974104	88.3	658517	11.7	5950382
*2000	11978962	5738351	47.9	5124615	89.3	613736	10.7	6241526
*2001	12258565	5893030	48.1	5292093	89.8	600937	10.2	6365944
*2002	12612657	6162963	48.9	5482779	89.0	680184	11.0	6450265
**2003	13839853	6547396	47.3	5849585	89.3	697811	10.7	7292837
***2004	14670217	7051951	48.1	6327524	89.7	724427	10.3	7618797
****2005	13630354	6565951	48.2	5964493	90.8	601458	9.2	7064403
*2006 Q1	13214347	7727829	58.5	7203407	93.2	524422	6.8	5486518
*2006 Q2	13251589	7623931	57.5	7167130	94.0	456801	6.0	5627659
*2006 Q3	13390459	7665322	57.2	7188341	93.8	476982	6.2	5725137

TABLE 2 - HISTORICAL TABLE OF NUMBER AND RATE OF UNEMPLOYMENT BY AGE (ALTERNATIVE ESTIMATES)

YEAR	AGE GROUP											
	TOTAL		15 - 19		20 - 24		25 - 29		30 - 39		40 & ABOVE	
	NO.	RATE	NO.	RATE	NO.	RATE	NO.	RATE	NO.	RATE	NO.	RATE
*1999	658517	11.7	158129	41.3	269327	31.9	113285	15.4	81121	5.7	36655	1.6
*2000	613736	10.7	126288	36.5	266306	30.7	117768	15.7	71019	4.9	32354	1.4
*2001	# 601026	10.2	130397	40.2	271672	30.5	105295	14.0	63668	4.4	29905	1.2
*2002	680184	11.0	136693	41.1	317071	32.7	113919.98	14.5	75086	4.9	37414	1.5
**2003	697811	10.7	141608.9	40.4	314693	32.2	121632	14.5	80467	4.8	39410	1.5
***2004	724427	10.3	134848	38.0	332229	31.2	122725	13.4	84461	4.8	50165	1.7
****2005	601458	9.2	122670	39.7	268331	28.4	99649	11.3	70764	4.4	40044	1.4
*2006 Q1	524422	6.8	116310	28.9	203018	21.6	103735	10.9	55168	3.0	46192	1.3
*2006Q2	456801	6.0	86502	22.3	187465	19.6	96281	9.7	50111	2.8	36442	1.0
*2006Q3	476982	6.2	75487	20.4	187961	20.7	120176	11.7	53155	3.0	40203	1.1

** Including Eastern province but excluding Northern province

*** Excluding kilinochchi, Vavunia and Mulathivu districts.

All the districts are included

Table 3 - Currently Employed persons by Industry group (No. and percentage) (Based on ISIC Third Revision) -
(Alternative estimates)

Year	Industry group														
	Total	1	2	3	4	5	6	7	8	9	10	11	12	13	14
*2002															
No.	5487325	1559133	983601	264384	723210	104151	292951	164062	518764	211281	80915	96911	91085	283032	113845
%	100.0	28.4	17.9	4.8	13.2	1.9	5.3	3.0	9.5	3.9	1.5	1.8	1.7	5.2	2.1
**2003															
No.	5860182	1682994	1038390	343650	744153	104923	344294	176993	510486	233874	91213	94491	74181	293951	126590
%	100.0	28.7	17.7	5.9	12.7	1.8	5.9	3.0	8.7	4.0	1.6	1.6	1.3	5.0	2.2
***2004															
No.	6337164	1792810	1191379	439936	794793	108521	402536	170027	526501	257965	102328	108076	65639	293621	83032
%	100.0	28.3	18.8	6.9	12.5	1.7	6.4	2.7	8.3	4.1	1.6	1.7	1.0	4.6	1.3
****2005															
No.	5971029	1573306	1147255	476851	739850	108424	422920	204139	465608	245956	118065	105175	47645	253367	62468
%	100.0	26.3	19.2	8.0	12.4	1.8	7.1	3.4	7.8	4.1	2.0	1.8	0.8	4.2	1.0
*2006 Q1															
No.	7221231	2346321	1332735	530161	974771	125906	404715	235820	406017	239391	110249	108934	90721	160726	154762
%	100.0	32.5	18.5	7.3	13.5	1.7	5.6	3.3	5.6	3.3	1.5	1.5	1.3	2.2	2.1
*2006 Q2															
No.	7208272	2423036	1249792	541434	884615	149599	403798	212971	368187	302943	91073	140764	90030	193322	156708
%	100.0	33.6	17.3	7.5	12.3	2.1	5.6	3.0	5.1	4.2	1.3	2.0	1.2	2.7	2.2
*2006 Q3															
No.	7204579	2122239	1485770	531747	962062	125715	437725	244160	435800	288526	121672	100798	78593	147340	122431
%	100.0	29.5	20.6	7.4	13.4	1.7	6.1	3.4	6.0	4.0	1.7	1.4	1.1	2.0	1.7

Industry group

- | | |
|---|--|
| 1 Agriculture Forestry and Fishery (A,B) | 8 Public Administration and Defence,Compulsory Social Security (L) |
| 2 Manufacturing (D) | 9 Education (M) |
| 3 Construction (F) | 10 Health and Social work (N) |
| 4 Wholesale and Retail Trade,Repair of Motor Vehicles, Motorcycles and Personal and Household Goods (G) | 11 Other Community,Social and Personal Service Activities (O) |
| 5 Hotels and Restaurants (H) | 12 Private Households with Employed Person (P) |
| 6 Transport, Storage and Communication (I) | 13 Miscellaneous Labour work |
| 7 Financial Intermediation and Real Estate, Renting and Business Activities (J,K) | 14 Other (C,E,Q) |
| | Minning & Quarrying (C) |
| | Electricity,Gas and Water supply (E) |
| | Extra Teritorial Organizations & bodies (Q) |
| | Industries not adequately described |

Note: The tabulation groups based on ISIC (Rev.3) are indicated as A,B,C.....Q. Due to the limitations on reliability (based on CV), some of these groups have been combined.