

Preface

Sri Lanka Labour Force Survey was designed to measure the levels and trends of employment, unemployment and labour force in Sri Lanka. This survey is being conducted quarterly, since the first quarter of 1990. A nationally representative annual sample of about 25,000 housing units have been selected for the survey in 2004. The present report, which is the fifty eighth in the series, is based on a sample of 4500 housing units and gives national estimates with a stipulated standard error of labour force characteristics as reported in the reference period of the third quarter of 2004. Third quarter of 2004, survey covers all districts in the island.

Planning and the execution of the survey was done by the staff of the Sample Surveys Division under the direction of Mr. G.Y.L. Fernando, Director (Sample Surveys) and under the supervision of Mr. J.A.P.Balasuriya, Deputy Director and Mrs. E.A.G. Perera, Senior Statistician.

The computer data processing was done by Mrs. W.A.S.M.P. Gunasekara and Mr. H.T. Fonseka, Statistical Officers, of Sample Surveys Division, under the direction of Mrs. Dharma Dissanayaka, Senior Statistician and under the supervision of Mr. P.A. Subawickrama, Statistician using Microcomputers.

This publication was organized and prepared by Mrs. Anoma Jayasekara, Senior Statistician under the direction of Mr. G.Y.L. Fernando, Director (Sample Surveys).

The Data Processing Division under the direction of Mrs. S.V. Nanayakkara, Director (Data Processing) and under the supervision of Mr. Migara Fernando, Systems Analyst/Programmer, was responsible for the survey data entry and preparation of computer edit and final tabulation programmes.

District field staff of the Department who worked on the survey deserve a special word of thanks. They include District Senior Statisticians/ Statisticians and field Statistical Officers, who worked hard at the data collection stage, to make this survey a success.

Printing of the report was done at the Printing Division, under the supervision of Mr. S.Hettiarachchie, Senior Statistician.

Finally, I wish to express my appreciation to all the respondents of the survey for their co-operation.

D.B.P.S. Vidyaratne
Acting Director General of Census and Statistics

Department of Census and Statistics,
15/12, Maitland Crescent,
Colombo 7.
09.03.2005.

Sri Lanka Labour Force Survey
Summary Statistics on Labour Force Characteristics
Third Quarter - 2004

10 years & over population

	Total	Male	Female	Urban	Rural
Population (10 years & over)	16702014	8081214	8620800	2260506	14441507
Labour force in this age group	7983613	5309677	2673936	1018339	6965274
Labour force participation rate	47.8	65.7	31.0	45.0	48.2
Employed population	7304547	4991170	2313377	940123	6364425
Employment rate	91.5	94.0	86.5	92.3	91.4
Unemployed population	679066	318507	360559	78217	600849
Unemployment rate	8.5	6.0	13.5	7.7	8.6
Not in labour force	8718400	2771537	5946864	1242167	7476233

15 years & over population

	Total	Male	Female	Urban	Rural
Population (15 years & over)	14732059	7070587	7661472	2036591	12695468
Labour force in this age group	7952713	5291761	2660952	1018339	6934373
Labour force participation rate	54.0	74.8	34.7	50.0	54.6
Employed population	7275389	4974996	2300393	940123	6335266
Employment rate	91.5	94.0	86.5	92.3	91.4
Unemployed population	677324	316765	360559	78217	599107
Unemployment rate	8.5	6.0	13.5	7.7	8.6
Not in labour force	6779346	1778826	5000520	1018252	5761095

20 years & over population

	Total	Male	Female	Urban	Rural
Population (20 years & over)	12891548	6142067	6749481	1800647	11090900
Labour force in this age group	7527568	5035959	2491610	982196	6545372
Labour force participation rate	58.4	82.0	36.9	54.5	59.0
Employed population	6959991	4777851	2182140	916188	6043803
Employment rate	92.5	94.9	87.6	93.3	92.3
Unemployed population	567577	258108	309470	66009	501569
Unemployment rate	7.5	5.1	12.4	6.7	7.7
Not in labour force	5363980	1106108	4257871	818451	4545528

Estimate of Confidence Intervals for some selected characteristics

Year/ Quarter	Labour Force			Employed			Unemployed			Unemployment Rate		
	No.	95% C.I.		No.	95% C.I.		No.	95% C.I.		No.	95% C.I.	
		Lower	Upper		Lower	Upper		Lower	Upper		Lower	Upper
2003 *	7653717	7480359	7827075	7012756	6850621	7174891	640961	600124	681798	0.084	0.079	0.089
2004 1st Q**	7986948	7676828	8297068	7336708	7040023	7633394	650240	570664	729815	0.081	0.072	0.091
2004 2nd Q***	8037830	7692146	8383514	7313647	7006799	7620495	724183	626715	821650	0.090	0.079	0.101
2004 3rd Q***	7983613	7714122	8253104	7304547	7047360	7561735	679066	594095	764036	0.085	0.075	0.095

* - Including Eastern province but Excluding Northern province

** - Excluding Vavunia, Mulathivu, Kilinochchi districts.

*** All the districts are included

CONTENTS

	Page No.
PREFACE	
WORKING AGE POPULATION	1
EMPLOYED POPULATION	2
UNEMPLOYED POPULATION	4
ALTERNATIVE ESTIMATES OF EMPLOYMENT, UNEMPLOYMENT AND LABOUR FORCE CHARACTERISTICS	5
SELECTED LABOUR FORCE INDICATORS	8
TABLES	
Table No.	
1. Historical table of Labour Force Status (current) of the Household Population, 10 years of Age and over - Both Sexes	9
1A. Historical table of Labour Force Status (current) of the Household Population, 10 years of Age and over - Male	10
1B. Historical table of Labour Force Status (current) of the Household Population, 10 years of Age and over - Female	10
2. Labour Force Status (current) of the Household Population 10 years of Age and over, by Age - Both Sexes	11
2A. Labour Force Status (current) of the Household Population 10 years of Age and over, by Age - Male	12
2B. Labour Force Status (current) of the Household Population 10 years of Age and over, by Age - Female	12
3. Historical table of Currently Employed persons by Age Groups (percentage) - Both Sexes	13
3A. Historical table of Currently Employed persons by Age Groups (percentage) - Male	14
3B. Historical table of Currently Employed persons by Age Groups (percentage) - Female	14
4. Historical table of Currently Employed persons by Level of Education (percentage) - Both Sexes	15
4A. Historical table of Currently Employed persons by Level of Education (percentage) - Male	16
4B. Historical table of Currently Employed persons by Level of Education (percentage) - Female	16
5. Historical table of Currently Employed persons by Employment Status (percentage) - Both Sexes	17
5A. Historical table of Currently Employed persons by Employment Status (percentage) - Male	18
5B. Historical table of Currently Employed persons by Employment Status (percentage) - Female	18
6. Currently employed persons by Industry group – Both sexes (Based on ISIC third revision)	19
6A. Currently employed persons by Industry group – Male (Based on ISIC third revision)	20
6B. Currently employed persons by Industry group – Female (Based on ISIC third revision)	20
7. Currently employed persons by Occupation group – Both sexes (Based on ISCO 88)	21
7A. Currently employed persons by Occupation group – Male (Based on ISCO 88)	22
7B. Currently employed persons by Occupation group – Female (Based on ISCO 88)	22
8. Currently Employed persons by hours per week actually worked at the main job and Major Industrial group (percentage) - Both Sexes	23
8A. Currently Employed persons by hours per week actually worked at the main job and Major Industrial group (percentage) - Male	24
8B. Currently Employed persons by hours per week actually worked at the main job and Major Industrial group (percentage) - Female	25

9.	Historical table of Currently Unemployed persons by Age Groups (percentage) - Both Sexes	26
9A.	Historical table of Currently Unemployed persons by Age Groups (percentage) - Male	27
9B.	Historical table of Currently Unemployed persons by Age Groups (percentage) - Female	27
10.	Historical table of Currently Unemployed persons by Level of Education (percentage) - Both Sexes	28
10A.	Historical table of Currently Unemployed persons by Level of Education (percentage) - Male	29
10B.	Historical table of Currently Unemployed persons by Level of Education (percentage) – Female	29
11.	Currently Unemployed Persons by Level of Education and Sector	30
11A.	Currently Unemployed Persons by Level of Education and Sector (Percentage)	30
12.	Currently Unemployed Persons by Sex and Duration of Unemployment	31
13.	Currently Unemployed Persons who never had a job by Sex and Sector	31
14.	Currently Unemployed Persons by Reasons for not actively seeking work Sex and Sector (percentage)	32
15.	Number of Persons not in the Labour force by Reasons for not in the Labour force Sex and Sector (percentage)	32
16.	Usual Labour Force Status (during the past 12 months) of the Household Population 10 years of age and over, by Age - Both Sexes	33
17.	Historical table of Usual Labour Force Status (during the past 12 months) of the Household Population 10 years of Age and over - Both Sexes	34
18.	Standard Error and Coefficient of Variation of selected variables	35

1. Introduction

As done in the 2004 second quarter, third quarter of 2004, Quarterly labour force survey covers all districts in the island. However, It should be noted that, in the first quarter of 2004, Labour Force Survey was not conducted in Kilinochchi, Mullativu and Vavunia districts. Therefore, it is not meaningful to compare these estimates directly with the estimates of the previous quarters.

The field work of the third quarter, 2004 survey was done in July and August 2004 and the current Labour Force Status of persons was measured as in the reference weeks of July and August 2004. Survey covers only the persons living in housing units and it excludes the institutional population.

2. Working Age Population (age 10 years & over)

Table (i) - Summary statistics on labour force

	Total	Male	Female	Urban	Rural
Population (10 years & over)	16702014	8081214	8620800	2260506	14441507
Labour force in this age group	7983613	5309677	2673936	1018339	6965274
Labour force participation rate	47.8	65.7	31.0	45.0	48.2
Employed population	7304547	4991170	2313377	940123	6364425
Employment rate	91.5	94.0	86.5	92.3	91.4
Unemployed population	679066	318507	360559	78217	600849
Unemployment rate	8.5	6.0	13.5	7.7	8.6
Not in labour force	8718400	2771537	5946864	1242167	7476233

- The survey estimated that 16.7 million persons are in the working age population during the survey period.

- Out of the total population nearly 87 percent persons are in the working age population.

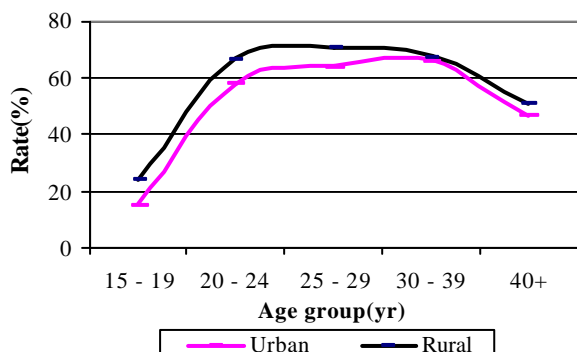
- The sex ratio of the working age population is about 94 percent which implies that there are more females than males in the working age population.

- It is noted that proportion of economically inactive females is more than double that of males.

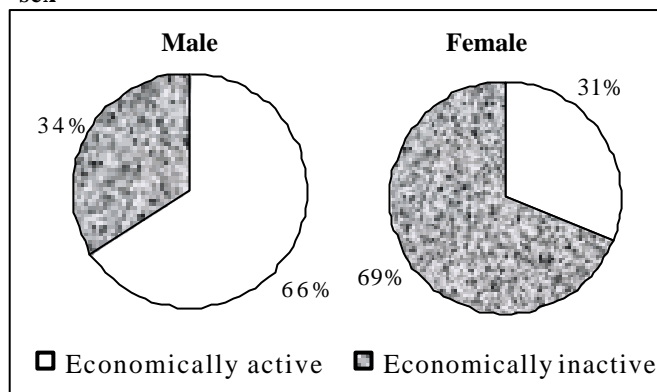
Table (iii) - Labour force participation rate by sector & age groups

Sector	Total	Age group (yrs)				
		15 - 19	20 - 24	25 - 29	30 - 39	40+
Total	47.8	23.1	66.0	69.5	67.3	50.1
Urban	45.0	15.3	57.9	64.0	66.3	46.8
Rural	48.2	24.2	67.2	70.2	67.5	50.7

Figure (iii) - Labour force participation rate by sector & age groups



Figure(i) - Distribution of working age population by sex

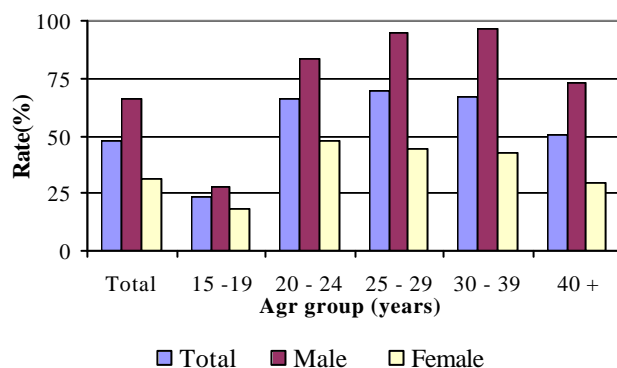


3. Economically Active Population

Table (ii) - Labour force participation rate by sex & age group

Sex	Total	Age group (yrs)				
		15 -19	20 - 24	25 - 29	30 - 39	40 +
Total	47.8	23.1	66.0	69.5	67.3	50.1
Male	65.7	27.5	83.7	95.0	96.3	72.7
Female	31.0	18.6	48.1	44.6	42.9	29.8

Figure (ii) - Labour force participation rate by sex & age group



- The overall labour force participation rate is reported as 47.8 percent. The labour force participation rate for males is 95 percent for those who are in the age range 25 - 29 yrs. This indicates that, the male participation has reached the maximum level in this age group.

- The highest participation rate for females is reported as 45 percent in the same age range.

4. Employed Population

- The employed population in Sri Lanka in third quarter, 2004 is estimated as 7.3 million.

Table (iv) - Distribution of Employed population by major industrial group by residential sector and sex

Residential sector	Total	Major industrial category		
		Agriculture	Industries	Services
Urban	100.0	6.7	26.2	67.1
Male	100.0	8.1	25.8	66.0
Female	100.0	3.6	27.0	69.5
Rural	100.0	38.2	22.4	39.4
Male	100.0	34.4	21.8	43.8
Female	100.0	46.3	23.6	30.1

Agriculture

Agriculture,
Forestry and Fishery

Industries

1. Manufacturing
2. Construction
3. Mining & Quarrying
4. Electricity, Gas and Water supply

Services

1. Wholesale and Retail Trade, Repair of Motor Vehicles, Motorcycles and Personal and Household Goods
2. Hotels and Restaurants
3. Transport, Storage and Communication
4. Financial Intermediation and Real Estate, Renting and Business Activities
5. Public Administration and Defence, Compulsory Social Security
6. Education
7. Health and Social work
8. Other Community, Social and Personal Service Activities
9. Private Households with Employed Persons
10. Miscellaneous Labour work
11. Extra Territorial Organizations & bodies
12. Industries not adequately described

Table (iv) gives the percentage distribution of employed population by major industrial category by sex & sector.

- It is clear that, within the urban sector the percentage share of 'Services' sector is about 67 percent, but with regard to the 'Agriculture' sector it is only 7 percent, within the rural sector these percentage shares are 39 percent and 38 percent respectively.

Figure (iv) - Distribution of Employed population by major industrial group by residential sector

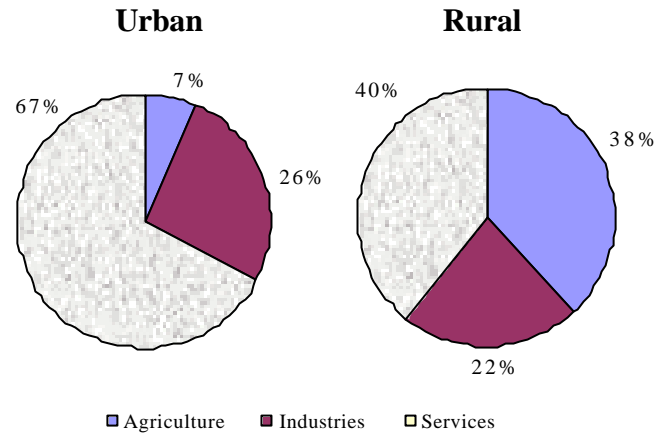
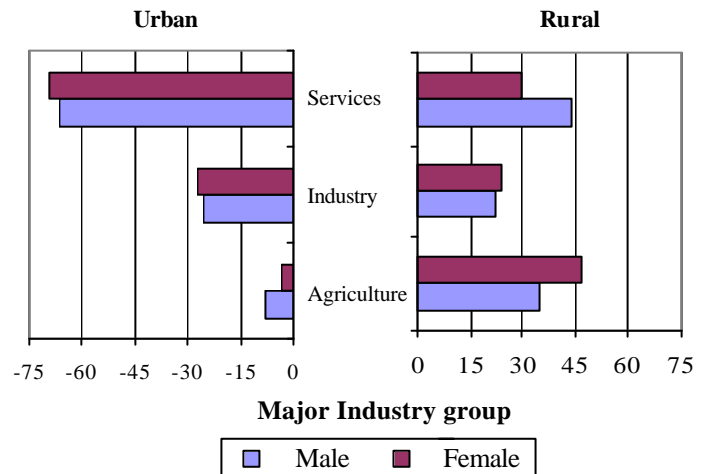


Figure (v) - Distribution of Employed population by major industrial group by residential sector & sex



- There is no much differences between urban and rural sectors when the major industry group 'Industries' is considered.

- It is also noted that, within the urban sector only 4 percent of females are employed in the 'Agriculture' sector and this contribution is 46 percent in the rural sector.

- The contribution to the 'Agriculture' sector made by males is reported to be 8 percent and 34 percent for urban and rural sector respectively.

Table (v) - Percentage distribution of employed population by major industrial category by sex

Industry group	Total	Sex	
		Male	Female
Total	100.0	100.0	100.0
1	34.1	31.0	40.9
2	16.7	13.6	23.3
3	4.7	6.7	0.5
4	12.8	14.8	8.4
5	1.1	1.3	0.5
6	5.7	8.2	0.3
7	2.6	2.4	2.9
8	7.0	7.9	5.2
9	3.6	1.7	7.8
10	1.6	0.9	3.0
11	1.5	1.6	1.2
12	0.9	0.3	2.2
13	4.7	5.8	2.4
14	3.0	3.7	1.3

Industry group

- 1 Agriculture, Forestry and Fishery (A,B)
- 2 Manufacturing (D)
- 3 Construction (F)
- 4 Wholesale and Retail Trade, Repair of Motor Vehicles, Motorcycles and Personal and Household Goods (G)
- 5 Hotels and Restaurants (H)
- 6 Transport, Storage and Communication (I)
- 7 Financial Intermediation and Real Estate, Renting and Business Activities (J,K)
- 8 Public Administration and Defence, Compulsory Social Security (L)
- 9 Education (M)
- 10 Health and Social work (N)
- 11 Other Community, Social and Personal Service Activities (O)
- 12 Private Households with Employed Persons (P)
- 13 Miscellaneous Labour work
- 14 Other (C,E,Q)

Other

- Minning & Quarrying (C)
- Electricity, Gas and Water supply (E)
- Extra Territorial Organizations & bodies (Q)
- Industries not adequately described

Note: The tabulation groups based on ISIC (Rev.3) are indicated as A,B,C,.....Q. Due to the limitations on reliability (based on CV), some of these groups have been combined.

• Table (vi) shows the percentage distribution of employed population by major industrial category by sex.

• The major industrial category 'Agriculture, Forestry and Fishery' remains the main group contributing 34 percent.

Table (vi) - Percentage distribution of Employed population by occupation group & residential sector

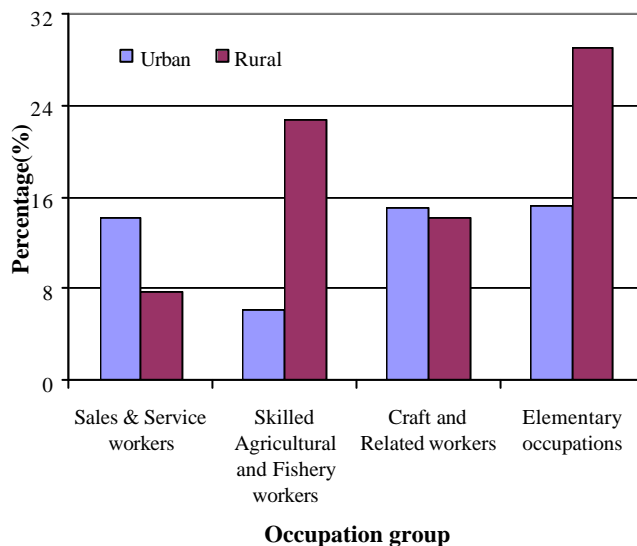
Occupation group	Total	Sector	
		Urban	Rural
Total	100.0	100.0	100.0
Senior Officials and Managers	1.8	4.7	1.4
Professionals	5.6	10.4	4.9
Technical and Associate Professionals	4.7	8.0	4.2
Clerks	4.1	8.5	3.5
Proprietors and Managers of Enterprises	5.9	10.2	5.3
Sale and Service workers	8.6	14.2	7.8
Skilled Agricultural and Fishery workers	20.7	6.2	22.8
Craft and Related workers	14.3	15.1	14.2
Plant and Machine operators and Assemblers	6.1	6.1	6.1
Elementary occupations	27.2	15.3	29.0
Unidentified	1.0	1.4	0.9

Note: It is to be noted here that these occupation groups are based on ISCO - 88, but they are not necessarily the Major Groups of ISCO - 88 classification

• It is noted that, percentage share of employed persons those who belong to the 'Agriculture' and 'Elementary occupation' groups together is about 48 percent

• The employees in 'Elementary' and 'Agriculture' occupation groups contributed about 52 percent to the rural sector together, while this percentage within the urban sector is about 21 percent.

Figure (vi) - Percentage distribution of Employed population by selected occupation groups & sector



5. Unemployed Population

Table (vii) - Percentage distribution of unemployed population by level of education & sector

Sector	Level of education				
	All levels	Below Gr.5	Gr. 5 - 9	G.C.E.(O/L)	G.C.E.(A/L) & above
All sectors	100.0	3.7	32.7	30.1	33.6
Urban	100.0	7.7	19.5	42.4	30.4
Rural	100.0	3.2	34.4	28.4	34.0

Table (viii) - Percentage distribution of unemployed population by level of education & sex

Sex	Level of education				
	All levels	Below Gr.5	Gr. 5 - 9	G.C.E.(O/L)	G.C.E.(A/L) & above
Both sexes	100.0	3.7	32.7	30.1	33.6
Male	100.0	4.6	40.6	28.2	26.6
Female	100.0	2.9	25.7	31.7	39.7

Figure (vii) - Unemployment rate by level of education & sex

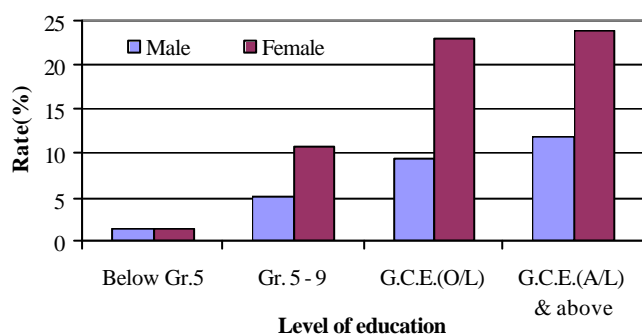


Table (xi) - Percentage distribution of currently unemployed persons by sex and duration of unemployment.

Sex	Total	Duration		
		Less than 6 months	6 to Less than 12 months	12 + months
Both sexes	100.0	15.1	12.4	72.5
Male	100.0	17.0	12.6	70.4
Female	100.0	13.3	12.2	74.5

? It is noted that percentage of unemployed for over 12 months is reported as 73 percent. These percentages are 70 percent and 75 percent for males and females respectively.

Table (ix) - Unemployment rate by level of education & sector

Sector	Total	Level of education			
		Below Gr.5	Gr. 5 - 9	G.C.E.(O/L)	G.C.E.(A/L) & above
All sectors	8.5	1.4	6.6	14.1	17.3
Urban	7.7	4.3	4.1	16.2	7.9
Rural	8.6	1.1	6.9	13.7	20.1

Table (x) - Unemployment rate by level of education & sex

Sex	Total	Level of education			
		Below Gr.5	Gr. 5 - 9	G.C.E.(O/L)	G.C.E.(A/L) & above
Both sexes	8.5	1.4	6.6	14.1	17.3
Male	6.0	1.3	5.2	9.4	11.9
Female	13.5	1.5	10.8	23.0	23.8

? The overall unemployment rate for the third quarter 2004 is reported as 8.5 percent.

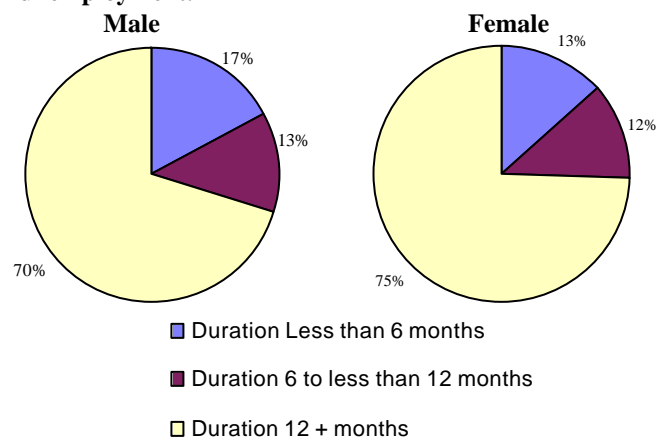
? 73 percent of unemployed population in urban sector is either G.C.E(O/L) qualified or have higher qualifications. This percentage within rural sector is 62 percent.

? When sex is considered, 71 percent of unemployed females have qualified with G.C.E.(O/L) and above. This percentage for male is 55 percent

? It is significant that, unemployment rates are higher among those who have higher educational qualifications.

? The unemployment rates of females are relatively higher than males for all level of educational groups.

Figure (viii) - Percentage distribution of currently unemployed persons by sex and duration of unemployment.



6. Statistical significance of the change in unemployment rate

? Estimated value of the unemployment rate in third quarter of year 2004 = 0.085

Estimated value of the unemployment rate in year 2003 = 0.084

The difference between the above estimated values is **not statistically significant** at 5 percent level of significance (two tail test)

7. Alternative Estimates of Employment, Unemployment and Labour Force Characteristics

? Official employment, unemployment and labour force characteristics are estimated at the Sri Lanka Labour Force Survey, based on the internationally comparable concepts and definitions recommended by the ILO. However the validity of the concepts and definitions used at the survey is questioned very often in some forums, for the appropriateness of these concepts and definitions in the Sri Lankan context.

The concepts and definitions, which were found to be controversial are as below.

(1) Number of Hours of Work :

A person who work **at least one hour** during the reference week, is considered **employed**, under these definitions.

(2) Working Age Population :

All persons of **age 10 years and over** are considered to be in the working age.

(3) Employment Status :

All, a) Paid employees, (those who work for wages/salaries).

b) Employers (who have at least one paid employee under them).

c) Own account workers (who carry out the economic activity without having any paid employees).

d) Unpaid family workers (who make their contribution to the economic activities carried out by their own household, without wages/salaries).

The validity of the above concepts and definitions is raised due to the following reasons.

(1) **Number of hours of Work** : Some point out that **one hour per week** is too low, to consider a person to be employed.

(2) **Working age Population** : Some point out that persons in the age group 10-14 yrs. are too young to consider to be in the working age.

(3) **Employment Status** : Some point out that 'unpaid family workers' may work in the family enterprise **without payment** because they have no other work, and so it is not appropriate to consider them as **employed**.

An attempt has been made to produce '**Alternative estimates of Employment, Unemployment and Labour Force Characteristics**,' by revising the original concepts and definitions so that the above issues are addressed as explained below.

The revisions made are,

(1) Number of Hours of Work :

Persons who work **20 hours or more per week only** are considered to be employed.

(2) Working Age Population :

Persons who are **over 15 yrs of age only** are considered to be in the working age.

(3) Unpaid Family Worker :

Unpaid family workers are **not** considered as employed. Those unpaid family workers who were reported to be seeking some other work are considered as **unemployed** and the rest of the unpaid family workers are considered as **economically inactive** (not in the labour force) so **only, a) paid employees b) employers and c) own account workers are considered to be employed.**

Following tables are based on the above alternative concepts and definitions.

TABLE 1 - LABOUR FORCE STATUS OF HOUSEHOLD POPULATION 15 YEARS & OVER (ALTERNATIVE ESTIMATES)

YEAR	HOUSEHOLD POPULATION (15 YEARS & OVER)	LABOUR FORCE						NOT IN LABOUR FORCE NUMBER
		TOTAL LABOUR FORCE	LABOUR FORCE PARTICI: RATE(%)	EMPLOYED		UNEMPLOYED		
				NUMBER	RATE (% TO TOTAL LABOUR FORCE)	NUMBER	RATE (% TO TOTAL LABOUR FORCE)	
*1998	11281913	5567813	49.4	4870332	87.5	697481	12.5	5714099
*1999	11582873	5632621	48.6	4974104	88.3	658517	11.7	5950382
*2000	11978962	5738351	47.9	5124615	89.3	613736	10.7	6241526
*2001	12258565	5893030	48.1	5292093	89.8	600937	10.2	6365944
*2002	12612657	6162963	48.9	5482779	89.0	680184	11.0	6450265
**2003	13839853	6547396	47.3	5849585	89.3	697811	10.7	7292837
***2004 1st Q	14422969	7075515	49.1	6363109	89.9	712406	10.1	7347454
# 2004 2nd Q	14650857	6933266	47.3	6171456	89.0	761810	11.0	7717591
# 2004 3rd Q	14724345	7057452	47.9	6312207	89.4	745245	10.6	7668736

TABLE 2 - HISTORICAL TABLE OF NUMBER AND RATE OF UNEMPLOYMENT BY AGE (ALTERNATIVE ESTIMATES)

YEAR	AGE GROUP											
	TOTAL		15 - 19		20 - 24		25 - 29		30 - 39		40 & ABOVE	
	NO.	RATE	NO.	RATE	NO.	RATE	NO.	RATE	NO.	RATE	NO.	RATE
*1999	658517	11.7	158129	41.3	269327	31.9	113285	15.4	81121	5.7	36655	1.6
*2000	613736	10.7	126288	36.5	266306	30.7	117768	15.7	71019	4.9	32354	1.4
*2001	601026	10.2	130397	40.2	271672	30.5	105295	14.0	63668	4.4	29905	1.2
*2002	680184	11.0	136693	41.1	317071	32.7	113919.98	14.5	75086	4.9	37414	1.5
**2003	697811	10.7	141608.9	40.4	314693	32.2	121632	14.5	80467	4.8	39410	1.5
***2004 1st Q	712406	10.1	155245	41.9	302368	27.9	116757	13.6	81047	4.5	56990	1.9
# 2004 2nd Q	761810	11.0	164386	43.6	338103	30.6	122739	14.2	88376	5.1	48205	1.7
# 2004 3rd Q	745245	10.6	124402	33.9	383435	34.6	127832	13.5	67205	3.9	42372	1.5

* Excluding Northern and Eastern province

** Including Eastern province but excluding Northern province

*** Excluding kilinochchi, Vavunia and Mulathivu districts.

All the districts are included

Table 3 - Currently Employed persons by Industry group (No. and percentage) (Based on ISIC Third Revision) - (Alternative estimates)

Year	Industry group														
	Total	1	2	3	4	5	6	7	8	9	10	11	12	13	14
*2002															
No.	5487325	1559133	983601	264384	723210	104151	292951	164062	518764	211281	80915	96911	91085	283032	113845
%	100.0	28.4	17.9	4.8	13.2	1.9	5.3	3.0	9.5	3.9	1.5	1.8	1.7	5.2	2.1
**2003															
No.	5860182	1682994	1038390	343650	744153	104923	344294	176993	510486	233874	91213	94491	74181	293951	126590
%	100.0	28.7	17.7	5.9	12.7	1.8	5.9	3.0	8.7	4.0	1.6	1.6	1.3	5.0	2.2
***2004 1st Q															
No.	6369078	1758744	1115066	355419	890984	119183	388437	167217	556712	282288	111520	100164	62567	299825	160954
%	100.0	27.6	17.5	5.6	14.0	1.9	6.1	2.6	8.7	4.4	1.8	1.6	1.0	4.7	2.5
# 2004 2nd Q															
No.	6177140	1894530	1116239	347901	773883	71529	431580	190816	477511	236262	85112	98195	75773	257949	119860
%	100.0	30.7	18.1	5.6	12.5	1.2	7.0	3.1	7.7	3.8	1.4	1.6	1.2	4.2	1.9
# 2004 3rd Q															
No.	6324313	1853654	1121750	323134	822806	76002	401205	179178	515193	244663	110757	93414	59569	317972	205016
%	100.0	29.3	17.7	5.1	13.0	1.2	6.3	2.8	8.1	3.9	1.8	1.5	0.9	5.0	3.2

Industry group

- | | |
|--|---|
| 1 Agriculture Forestry and Fishery (A,B) | 8 Public Administration and Defence, Compulsory Social Security (L) |
| 2 Manufacturing (D) | 9 Education (M) |
| 3 Construction (F) | 10 Health and Social work (N) |
| 4 Wholesale and Retail Trade, Repair of Motor Vehicles, Motorcycles and Personal and Household Goods (G) | 11 Other Community, Social and Personal Service Activities (O) |
| 5 Hotels and Restaurants (H) | 12 Private Households with Employed Person (P) |
| 6 Transport, Storage and Communication (I) | 13 Miscellaneous Labour work |
| 7 Financial Intermediation and Real Estate, Renting and Business Activities (J,K) | 14 Other (C,E,Q) |

Other

- Mining & Quarrying (C)
- Electricity, Gas and Water supply (E)
- Extra Territorial Organizations & bodies (Q)
- Industries not adequately described

Note: The tabulation groups based on ISIC (Rev.3) are indicated as A,B,C.....Q. Due to the limitations on reliability (based on CV), some of these groups have been combined.

* Excluding Northern and Eastern province

** Including Eastern province but excluding Northern province

*** Excluding kilinochchi, Vavunia and Mulathivu districts.

All the districts are included

Selected Labour Force Indicators

	Year						
	1996*	1998*	2000*	2001*	2002*	2003**	2004Q3***
Labour force participation rate							
by sex							
Both sexes	48.6	51.7	50.3	48.8	50.3	48.9	47.8
Male	65.9	67.5	67.2	66.2	67.9	67.2	65.7
Female	31.6	36.4	33.9	31.9	33.6	31.4	31.0
by residential sector							
Total	48.6	51.7	50.3	48.8	50.3	48.9	47.8
Urban	44.4	45.2	44.9	44.2	46.0	44.4	45.0
Rural	49.5	52.7	51.2	49.6	50.9	49.6	48.2
Unemployment rate							
by sex							
Both sexes	11.3	9.2	7.6	7.9	8.8	8.4	8.5
Male	8.2	6.5	5.8	6.2	6.6	6.0	6.0
Female	17.7	14.0	11.1	11.5	12.9	13.2	13.5
by selected age groups(yr)							
20 - 29	22.0	19.3	17.4	18.4	20.1	19.4	21.4
20 - 24	29.1	25.4	23.0	24.4	27.0	26.4	30.0
25 - 29	14.4	12.4	10.9	11.3	11.6	11.4	11.5
by selected educational levels							
G.C.E.(A/L) & above							
Both sexes	19.0	17.5	14.9	15.3	16.8	16.5	17.3
Male	10.1	9.4	8.8	10.1	10.8	10.4	11.9
Female	28.3	25.8	21.5	21.5	23.0	23.3	23.8
Employed population							
by sex							
Both sexes	5536216	6049388	6310247	6235588	6519415	7012755	7304547
Male	3856411	4004621	4241546	4248877	4395164	4833483	4991170
Female	1679805	2044767	2068701	1986711	2124250	2179272	2313377
by industry (percentage)							
Total	100.0	100.0	100.0	100.0	100.0	100.0	100.0
Agriculture	37.4	39.3	36.0	32.6	34.5	34.0	34.1
Manufacturing	14.6	14.9	16.6	17.0	16.5	16.5	16.7
Other	48.0	45.8	47.4	50.4	49.1	49.5	49.2
by no. of hours worked per week (percentage)							
Total	100.0	100.0	100.0	100.0	100.0	100.0	100.0
0 #	4.9	5.3	7.2	4.3	5.6	7.5	4.3
1 - 9	1.8	2.3	1.9	1.5	1.5	1.8	1.4
10 - 39	32.0	32.9	32.7	28.2	32.0	32.6	27.8
40+	61.3	59.6	58.2	66.1	60.9	58.1	66.5

* Excluding Northern & Eastern provinces

** Excluding Northern province

*** All the districts are included

Has a job but not at work during the reference week

TABLE 1 - HISTORICAL TABLE OF LABOUR FORCE STATUS (CURRENT) OF THE HOUSEHOLD POPULATION, 10 YEARS OF AGE AND OVER - BOTH SEXES

YEAR	HOUSEHOLD POPULATION (10 YEARS & OVER)	LABOUR FORCE						NOT IN LABOUR FORCE NUMBER
		TOTAL LABOUR FORCE	LABOUR FORCE PARTICI: RATE(%)	EMPLOYED		UNEMPLOYED		
				NUMBER	RATE (% TO TOTAL LABOUR FORCE)	NUMBER	RATE (% TO TOTAL LABOUR FORCE)	
1990	11573941	6001148	51.9	5047354	84.1	953794	5.9	5572793
1991	11795793	5877198	49.8	5015517	85.3	861680	14.7	5918596
1992	12058463	5808062	48.2	4962105	85.4	845957	14.6	6250400
1993	12278055	6032383	49.1	5201474	86.2	830910	13.8	6245675
1994	12492850	6078863	48.7	5281272	86.9	797591	13.1	6413985
1995	12736185	6106138	47.9	5357117	87.7	749021	12.3	6630048
1996	12831240	6241889	48.6	5537285	88.7	704604	11.3	6589365
1997	12870791	6266160	48.7	5607881	89.5	658279	10.5	6604630
1998	12881790	6660520	51.7	6049238	90.8	611285	9.2	6221274
1999	13169250	6673487	50.7	6082641	91.2	590846	8.9	6495782
2000	13564660	6827312	50.3	6310145	92.4	517168	7.6	6737345
2001	13870479	6772834	48.8	6235588	92.1	537246	7.9	7097644
2002	14201396	7145382	50.3	6519415	91.2	625967	8.8	7056014
*2003	15651479	7653716	48.9	7012755	91.6	640961	8.4	7997763
**2004 1st Q	16315638	7986948	49.0	7336708	91.9	650240	8.1	8328690
*** 2004 2nd Q	16524970	8037831	48.6	7313648	91.0	724183	9.0	8487138
*** 2004 3rd Q	16702014	7983613	47.8	7304547	91.5	679066	8.5	8718400

- STANDARD ERROR OF THE ESTIMATES ARE GIVEN IN TABLE - 18

(Note : Up to 2002 fourth quarter, both Northern & Eastern provinces are excluded from the estimates.)

* - Including Eastern province but Excluding Northern province

** - Excluding Vavunia, Mulathivu, Kilinochchi districts.

*** All the districts are included

TABLE 1A - HISTORICAL TABLE OF LABOUR FORCE STATUS (CURRENT) OF THE HOUSEHOLD POPULATION, 10 YEARS OF AGE AND OVER - MALE

YEAR	HOUSEHOLD POPULATION (10 YEARS & OVER)	LABOUR FORCE						NOT IN LABOUR FORCE NUMBER
		TOTAL LABOUR FORCE	LABOUR FORCE PARTICI: RATE(%)	EMPLOYED		UNEMPLOYED		
				NUMBER	RATE (% TO TOTAL LABOUR FORCE)	NUMBER	RATE (% TO TOTAL LABOUR FORCE)	
*1993	6109486	3989443	65.3	3601779	90.3	387663	9.7	2120044
*1994	6228064	4072937	65.4	3678648	90.3	394289	9.7	2155127
*1995	6318003	4068608	64.4	3700951	91.0	367656	9.0	2249395
*1996	6373670	4200886	65.9	3857147	91.8	343741	8.2	2172784
*1997	6372365	4184248	65.6	3862087	92.3	322168	7.7	2188110
*1998	6344453	4281996	67.5	4004504	93.5	277491	6.5	2062456
*1999	6506662	4402713	67.7	4107497	93.3	295217	6.7	2103953
*2000	6702871	4501597	67.2	4241477	94.2	260120	5.8	2201274
*2001	6837264	4529016	66.2	4248877	93.8	280139	6.2	2308248
*2002	6935012	4705586	67.9	4395164	93.4	310421	6.6	2229427
**2003	7657368	5144206	67.2	4833483	94.0	310723	6.0	2513162
***2004 1st Q	7969483	5369236	67.4	5037384	93.8	331852	6.2	2600247
**** 2004 2nd Q	7987960	5405771	67.7	5049101	93.4	356670	6.6	2582189
**** 2004 3rd Q	8081214	5309677	65.7	4991170	94.0	318507	6.0	2771537

TABLE 1B - HISTORICAL TABLE OF LABOUR FORCE STATUS (CURRENT) OF THE HOUSEHOLD POPULATION, 10 YEARS OF AGE AND OVER - FEMALE

YEAR	HOUSEHOLD POPULATION (10 YEARS & OVER)	LABOUR FORCE						NOT IN LABOUR FORCE NUMBER
		TOTAL LABOUR FORCE	LABOUR FORCE PARTICI: RATE(%)	EMPLOYED		UNEMPLOYED		
				NUMBER	RATE (% TO TOTAL LABOUR FORCE)	NUMBER	RATE (% TO TOTAL LABOUR FORCE)	
*1993	6168572	2042941	33.1	1599695	78.3	443247	21.7	4125631
*1994	6264782	2005927	32.0	1602625	79.9	403302	20.1	4258857
*1995	6418183	2037530	31.7	1656166	81.3	381364	18.7	4380652
*1996	6457583	2041002	31.6	1680138	82.3	360864	17.7	4416583
*1997	6498427	2081906	32.0	1745794	83.9	336112	16.1	4416521
*1998	6537344	2378526	36.4	2044732	86.0	333795	14.0	4158818
*1999	6662613	2270782	34.1	1975153	87.0	295629	13.0	4392047
*2000	6861794	2325716	33.9	2068667	89.0	257048	11.0	4536078
*2001	7033214	2243818	31.9	1986711	88.5	257107	11.5	4789396
*2002	7266384	2439796	33.6	2124250	87.1	315546	12.9	4826588
**2003	7994111	2509510	31.4	2179272	86.8	330238	13.2	5484600
***2004 1st Q	8346156	2617712	31.4	2299324	87.8	318388	12.2	5728444
**** 2004 2nd Q	8537007	2632059	30.8	2264546	86.0	367513	14.0	5904948
**** 2004 3rd Q	8620800	2673936	31.0	2313377	86.5	360559	13.5	5946864

* - Excluding Northern and Eastern provinces

** - Including Eastern province but Excluding Northern province

*** - Excluding Vavunia, Mulathivu, Kilinochchi districts.

**** - All the districts are included

TABLE 2 - LABOUR FORCE STATUS (CURRENT) OF THE HOUSEHOLD POPULATION 10 YEARS OF AGE AND OVER ,BY AGE - BOTH SEXES

(THIRD QUARTER 2004)								
AGE	HOUSEHOLD POP: (10 YEARS & OVER)	LABOUR FORCE						NOT IN LABOUR FORCE NUMBER
		TOTAL LABOUR FORCE	LABOUR FORCE PARTICI: RATE(%)	EMPLOYED		UNEMPLOYED		
				NUMBER	RATE	NUMBER	RATE	
ALL AGES	16702014	7983613	47.8	7304547	91.5	679066	8.5	8718400
10 - 14 YRS	*	*	*	*	*	*	*	*
15 - 19 YRS	1840512	425145	23.1	315398	74.2	109746	25.8	1415367
20 - 24 YRS	1795275	1184710	66.0	829101	70.0	355609	30.0	610565
25 - 29 YRS	1482580	1030074	69.5	911309	88.5	118765	11.5	452506
30 - 39 YRS	2875233	1934934	67.3	1877977	97.1	56956	2.9	940299
40 + YRS	6738460	3377851	50.1	3341604	98.9	36247	1.1	3360609

* Reliable estimates cannot be provided.

TABLE 2A - LABOUR FORCE STATUS (CURRENT) OF THE HOUSEHOLD POPULATION 10 YEARS OF AGE AND OVER ,BY AGE - MALE

(THIRD QUARTER 2004)

AGE	HOUSEHOLD POP: (10 YEARS & OVER)	LABOUR FORCE						NOT IN LABOUR FORCE NUMBER
		TOTAL LABOUR FORCE	LABOUR FORCE PARTICI: RATE(%)	EMPLOYED		UNEMPLOYED		
				NUMBER	RATE	NUMBER	RATE	
ALL AGES	8081214	5309677	65.7	4991170	94.0	318507	6.0	2771537
10 - 14 YRS	*	*	*	*	*	*	*	*
15 - 19 YRS	928520	255802	27.5	197145	77.1	58657	22.9	672718
20 - 24 YRS	903011	755437	83.7	586781	77.7	168656	22.3	147574
25 - 29 YRS	732597	695748	95.0	649656	93.4	46092	6.6	36849
30 - 39 YRS	1314236	1265193	96.3	1238603	97.9	26591	2.1	49043
40 + YRS	3192223	2319580	72.7	2302810	99.3	16769	0.7	872643

TABLE 2B - LABOUR FORCE STATUS (CURRENT) OF THE HOUSEHOLD POPULATION 10 YEARS OF AGE AND OVER ,BY AGE - FEMALE

(THIRD QUARTER 2004)

AGE	HOUSEHOLD POP: (10 YEARS & OVER)	LABOUR FORCE						NOT IN LABOUR FORCE NUMBER
		TOTAL LABOUR FORCE	LABOUR FORCE PARTICI: RATE(%)	EMPLOYED		UNEMPLOYED		
				NUMBER	RATE	NUMBER	RATE	
ALL AGES	8620800	2673936	31.0	2313377	86.5	360559	13.5	5946864
10 - 14 YRS	*	*	*	*	*	*	*	*
15 - 19 YRS	911991	169343	18.6	118253	69.8	51089	30.2	742649
20 - 24 YRS	892264	429273	48.1	242319	56.4	186953	43.6	462992
25 - 29 YRS	749983	334325	44.6	261653	78.3	72673	21.7	415657
30 - 39 YRS	1560997	669740	42.9	639374	95.5	30366	4.5	891257
40 + YRS	3546237	1058271	29.8	1038794	98.2	19478	1.8	2487966

* Reliable estimates cannot be provided due to small cell sizes.

These figures are to be treated with caution as the corresponding CV (Coefficient of variation) values are above 40 percent.

**TABLE 3 - HISTORICAL TABLE OF CURRENTLY EMPLOYED PERSONS BY AGE GROUPS
(PERCENTAGE) - BOTH SEXES**

Year	All Ages	Age Groups					
		10 - 14 YRS	15 - 19 YRS	20 - 24 YRS	25 - 29 YRS	30 - 39 YRS	40+ YRS
*1990	100.0	1.1	5.7	11.9	13.7	27.0	40.7
*1991	100.0	0.7	5.4	12.7	13.7	26.8	40.7
*1992	100.0	0.5	5.1	13.4	14.1	27.0	39.9
*1993	100.0	0.4	5.2	12.7	14.2	26.7	40.7
*1994	100.0	0.4	4.9	12.3	13.9	28.2	40.3
*1995	100.0	0.3	4.9	11.6	14.1	26.5	42.7
*1996	100.0	0.4	5.3	12.1	13.7	28.1	40.4
*1997	100.0	0.3	5.1	11.9	13.3	27.2	42.1
*1998	100.0	0.8	5.9	12.1	12.5	26.7	42.1
*1999	100.0	0.9	5.8	11.8	12.2	26.1	43.3
*2000	100.0	0.5	5.2	12.2	12.3	26.0	43.8
*2001	100.0	0.4	4.3	12.1	12.0	25.4	45.8
*2002	100.0	0.3	4.4	12.2	12.1	26.2	44.8
**2003	100.0	0.3	4.2	11.6	12.2	26.3	45.4
*** 2004 1st Q	100.0	0.4	4.1	12.4	11.4	26.0	45.7
**** 2004 2nd Q	100.0	0.3	4.0	12.4	11.8	26.1	45.3
**** 2004 3rd Q	100.0	0.4	4.3	11.4	12.5	25.7	45.7



These figures are to be treated with caution as the corresponding CV (Coefficient of variation) values are above 40 percent.

* - Excluding Northern and Eastern provinces

** - Including Eastern province but Excluding Northern province

*** - Excluding Vavunia, Mulathivu, Kilinochchi districts.

**** - All the districts are included

**TABLE 3A - HISTORICAL TABLE OF CURRENTLY EMPLOYED PERSONS BY AGE GROUPS
(PERCENTAGE) - MALE**

Year	All Ages	Age Groups					
		10 - 14 YRS	15 - 19 YRS	20 - 24 YRS	25 - 29 YRS	30 - 39 YRS	40+ YRS
*1990	100.0	1.0	5.7	11.7	13.3	26.3	42.1
*1991	100.0	0.6	5.2	12.6	13.2	25.7	42.8
*1992	100.0	0.4	4.7	13.2	13.9	26.2	41.6
*1993	100.0	0.4	4.8	11.5	14.8	26.2	42.2
*1994	100.0	0.4	4.7	11.9	13.5	27.2	42.2
*1995	100.0	0.3	4.8	11.0	14.0	26.0	43.8
*1996	100.0	0.4	5.0	11.7	13.4	27.8	41.7
*1997	100.0	0.3	4.8	11.1	13.0	27.1	43.6
*1998	100.0	0.7	5.6	11.9	12.3	26.2	43.3
*1999	100.0	0.7	5.8	11.8	11.8	25.7	44.1
*2000	100.0	0.4	5.2	12.0	12.3	25.4	44.7
*2001	100.0	0.3	4.1	12.0	12.1	25.0	46.4
*2002	100.0	0.3	4.2	11.8	11.8	26.2	45.8
**2003	100.0	0.3	3.9	11.4	12.7	25.7	46.1
***2004 1st Q	100.0	0.3	3.7	12.3	12.3	25.2	46.1
****2004 2nd Q	100.0	0.4	3.7	11.9	12.4	25.5	46.2
**** 2004 3rd Q	100.0	0.3	3.9	11.8	13.0	24.8	46.1

**TABLE 3B - HISTORICAL TABLE OF CURRENTLY EMPLOYED PERSONS BY AGE GROUPS
(PERCENTAGE) - FEMALE**

Year	All Ages	Age Groups					
		10 - 14 YRS	15 - 19 YRS	20 - 24 YRS	25 - 29 YRS	30 - 39 YRS	40+ YRS
*1990	100.0	1.2	5.6	12.4	14.5	28.4	38.0
*1991	100.0	0.9	6.0	13.0	14.6	29.1	36.4
*1992	100.0	0.8	5.9	13.9	14.4	29.2	35.8
*1993	100.0	0.4	5.9	15.4	12.9	27.7	37.7
*1994	100.0	0.5	5.3	13.2	14.8	30.4	35.9
*1995	100.0	0.4	5.0	12.9	14.3	27.3	40.1
*1996	100.0	0.5	6.0	13.1	14.2	28.8	37.4
*1997	100.0	0.3	5.7	13.7	14.0	27.6	38.7
*1998	100.0	1.0	6.4	12.4	12.8	27.6	39.7
*1999	100.0	1.1	5.9	11.7	12.9	27.1	41.4
*2000	100.0	0.7	5.3	12.6	12.1	27.4	41.9
*2001	100.0	0.5	4.7	12.4	11.8	26.2	44.5
*2002	100.0	0.5	4.7	13.1	12.6	26.2	42.9
**2003	100.0	0.4	4.7	12.2	11.2	27.6	43.9
***2004 1st Q	100.0	0.6	4.9	12.7	9.5	27.7	44.6
****2004 2nd Q	100.0	0.2	4.7	13.8	10.4	27.5	43.3
**** 2004 3rd Q	100.0	0.6	5.1	10.5	11.3	27.6	44.9

These figures are to be treated with caution as the corresponding CV (Coefficient of variation) values are above 40 percent.

* - Excluding Northern and Eastern provinces

** - Including Eastern province but Excluding Northern province

*** - Excluding Vavunia, Mulathivu, Kilinochchi districts.

**** - All the districts are included

**TABLE 4 - HISTORICAL TABLE OF CURRENTLY EMPLOYED PERSONS BY LEVEL OF EDUCATION
(PERCENTAGE) - BOTH SEXES**

Year	Total	Level of education			
		Below Grade 5	Grades 5 - 9/ Years 6 - 10	GCE (O.L.)/ NCGE	GCE (A.L.)/ HNCE and above
*1990	100.0	31.9	45.1	16.0	7.0
*1991	100.0	31.6	44.8	15.6	7.9
*1992	100.0	29.9	44.9	16.5	8.7
*1993	100.0	28.5	45.1	16.9	9.5
*1994	100.0	28.2	45.4	17.5	8.8
*1995	100.0	26.8	44.9	18.0	10.3
*1996	100.0	29.5	43.3	16.9	10.3
*1997	100.0	27.9	44.0	17.6	10.5
*1998	100.0	26.8	45.0	17.2	11.0
*1999	100.0	25.4	45.7	18.0	10.9
*2000	100.0	25.1	46.3	16.7	11.9
*2001	100.0	22.7	46.1	17.7	13.5
*2002	100.0	24.6	45.6	15.8	14.0
**2003	100.0	24.5	46.2	15.9	13.3
***2004 1st Q	100.0	23.1	45.2	17.5	14.2
**** 2004 2nd Q	100.0	26.0	45.6	15.5	12.9
**** 2004 3rd Q	100.0	25.0	43.1	17.1	14.9

* - Excluding Northern and Eastern provinces

** - Including Eastern province but Excluding Northern province

*** - Excluding Vavunia, Mulathivu, Kilinochchi districts.

**** - All the districts are included

**TABLE 4A - HISTORICAL TABLE OF CURRENTLY EMPLOYED PERSONS BY LEVEL OF EDUCATION
(PERCENTAGE) - MALE**

Year	Total	Level of education			
		Below Grade 5	Grades 5 - 9/ Years 6 - 10	GCE (O.L)/ NCGE	GCE (A.L)/ HNCE and above
*1990	100.0	29.6	48.3	16.1	5.9
*1991	100.0	28.0	49.0	15.5	7.5
*1992	100.0	27.4	48.2	17.0	7.4
*1993	100.0	25.4	49.8	17.2	7.7
*1994	100.0	25.5	49.6	17.7	7.2
*1995	100.0	25.1	48.2	18.3	8.4
*1996	100.0	27.7	47.1	16.8	8.4
*1997	100.0	26.5	47.2	17.5	8.7
*1998	100.0	25.3	48.5	17.0	9.2
*1999	100.0	24.0	49.4	17.7	9.0
*2000	100.0	24.1	49.6	16.6	9.8
*2001	100.0	21.5	49.3	17.8	11.4
*2002	100.0	23.5	49.1	16.0	11.4
**2003	100.0	23.8	49.2	16.2	10.8
***2004 1st Q	100.0	21.6	49.2	17.8	11.4
**** 2004 2nd Q	100.0	24.0	49.4	16.0	10.7
**** 2004 3rd Q	100.0	22.4	47.7	17.3	12.6

**TABLE 4B - HISTORICAL TABLE OF CURRENTLY EMPLOYED PERSONS BY LEVEL OF EDUCATION
(PERCENTAGE) - FEMALE**

Year	Total	Level of education			
		Below Grade 5	Grades 5 - 9/ Years 6 - 10	GCE (O.L)/ NCGE	GCE (A.L)/ HNCE and above
*1990	100.0	37.0	38.1	15.6	9.3
*1991	100.0	39.6	35.8	15.9	8.8
*1992	100.0	35.7	37.0	15.5	11.9
*1993	100.0	35.6	34.7	16.3	13.5
*1994	100.0	34.5	35.8	17.2	12.6
*1995	100.0	30.8	37.3	17.5	14.3
*1996	100.0	33.7	34.4	17.1	14.7
*1997	100.0	31.0	37.0	17.6	14.4
*1998	100.0	29.9	38.2	17.7	14.3
*1999	100.0	28.3	38.0	18.7	15.0
*2000	100.0	27.3	39.6	17.1	16.1
*2001	100.0	25.5	39.2	17.3	18.0
*2002	100.0	27.0	38.3	15.3	19.4
**2003	100.0	26.1	39.6	15.5	18.9
***2004 1st Q	100.0	26.4	36.6	16.7	20.3
**** 2004 2nd Q	100.0	30.5	37.2	14.5	17.8
**** 2004 3rd Q	100.0	30.4	33.2	16.5	19.9

* - Excluding Northern and Eastern provinces

** - Including Eastern province but Excluding Northern province

*** - Excluding Vavunia, Mulathivu, Kilinochchi districts.

**** - All the districts are included

**TABLE 5 - HISTORICAL TABLE OF CURRENTLY EMPLOYED PERSONS BY EMPLOYMENT STATUS
(PERCENTAGE) - BOTH SEXES**

YEAR	TOTAL EMPLOYED	EMPLOYEE			EMPLOYER	OWN ACCOUNT WORKER	UNPAID FAMILY WORKER
		TOTAL	PUBLIC	PRIVATE			
*1990	100.0	55.2	21.5	33.7	1.8	29.2	13.8
*1991	100.0	62.4	22.9	39.5	2.2	25.4	10.0
*1992	100.0	60.1	20.0	40.0	1.6	27.1	11.2
*1993	100.0	60.0	17.4	42.8	2.0	27.4	10.4
*1994	100.0	60.7	16.4	44.3	2.3	27.2	9.8
*1995	100.0	59.8	15.6	44.3	2.5	28.3	9.4
*1996	100.0	60.8	15.0	45.8	2.3	26.8	10.0
*1997	100.0	59.4	15.1	44.3	2.3	28.8	9.4
*1998	100.0	55.6	14.5	41.2	1.9	28.9	13.6
*1999	100.0	57.5	14.4	43.1	2.0	28.3	12.2
*2000	100.0	56.3	13.4	42.9	2.3	28.4	13.0
*2001	100.0	58.6	13.9	44.7	2.3	28.5	10.6
*2002	100.0	57.9	13.4	44.5	2.8	28.6	10.7
**2003	100.0	57.9	13.5	44.4	2.6	29.6	9.9
***2004 1st Q	100.0	61.1	13.8	47.3	2.8	27.6	8.5
**** 2004 2nd Q	100.0	59.4	12.4	47.0	3.3	28.8	8.5
**** 2004 3rd Q	100.0	60.1	12.9	47.2	2.4	28.7	8.8

* - Excluding Northern and Eastern provinces

** - Including Eastern province but Excluding Northern province

*** - Excluding Vavunia, Mulathivu, Kilinochchi districts.

**** - All the districts are included

**TABLE 5A - HISTORICAL TABLE OF CURRENTLY EMPLOYED PERSONS BY EMPLOYMENT STATUS
(PERCENTAGE) - MALE**

YEAR	EMPLOYEE					OWN ACCOUNT WORKER	UNPAID FAMILY WORKER
	TOTAL EMPLOYED	TOTAL	PUBLIC	PRIVATE	EMPLOYER		
*1990	100.0	55.2	19.7	35.5	2.3	34.6	7.9
*1991	100.0	61.5	20.3	41.2	2.9	29.8	5.9
*1992	100.0	58.7	18.4	40.3	2.0	32.2	7.2
*1993	100.0	57.7	15.6	42.0	2.6	33.0	6.7
*1994	100.0	59.3	15.9	43.4	2.9	32.0	5.9
*1995	100.0	58.4	14.6	43.7	3.1	33.5	5.1
*1996	100.0	59.5	14.1	45.4	3.2	31.2	6.1
*1997	100.0	58.3	14.4	43.9	3.0	33.2	5.5
*1998	100.0	55.8	14.1	41.7	2.5	34.8	6.8
*1999	100.0	57.7	13.8	43.9	2.7	33.5	6.2
*2000	100.0	56.6	12.6	44.0	3.1	33.8	6.5
*2001	100.0	57.9	12.9	45.0	3.1	33.4	5.5
*2002	100.0	57.5	12.6	44.8	3.7	34.0	4.8
**2003	100.0	57.4	12.6	44.9	3.4	34.5	4.8
***2004 1st Q	100.0	60.4	12.1	48.4	3.6	31.7	4.2
**** 2004 2nd Q	100.0	57.9	11.3	46.7	4.3	33.9	3.9
**** 2004 3rd Q	100.0	59.4	11.8	47.7	3.3	33.2	4.1

**TABLE 5B - HISTORICAL TABLE OF CURRENTLY EMPLOYED PERSONS BY EMPLOYMENT STATUS
(PERCENTAGE) - FEMALE**

YEAR	EMPLOYEE					OWN ACCOUNT WORKER	UNPAID FAMILY WORKER
	TOTAL EMPLOYED	TOTAL	PUBLIC	PRIVATE	EMPLOYER		
*1990	100.0	55.1	25.3	29.8	0.6	17.9	26.5
*1991	100.0	64.5	28.6	35.9	0.7	16.0	18.9
*1992	100.0	63.4	24.1	39.4	0.7	14.8	21.0
*1993	100.0	65.6	21.0	44.6	0.7	15.0	18.7
*1994	100.0	64.2	17.7	46.5	0.9	16.1	18.8
*1995	100.0	63.2	17.6	45.5	1.1	16.7	19.1
*1996	100.0	63.9	17.0	46.8	0.5	16.7	18.9
*1997	100.0	61.8	16.7	45.2	0.9	19.0	18.3
*1998	100.0	55.2	15.2	40.1	0.6	17.2	27.0
*1999	100.0	57.2	15.6	41.5	0.6	17.5	24.8
*2000	100.0	55.5	15.0	40.5	0.8	17.2	26.5
*2001	100.0	60.1	15.9	44.1	0.5	18.1	21.3
*2002	100.0	58.8	15.1	43.7	0.8	17.4	23.0
**2003	100.0	59.0	15.7	43.3	0.9	18.8	21.3
***2004 1st Q	100.0	62.4	17.5	44.9	1.0	18.6	18.0
**** 2004 2nd Q	100.0	62.7	15.0	47.7	0.9	17.4	18.9
**** 2004 3rd Q	100.0	61.7	15.4	46.3	0.5	18.8	19.0

* - Excluding Northern and Eastern provinces

** - Including Eastern province but Excluding Northern province

*** - Excluding Vavunia, Mulathivu, Kilinochchi districts.

**** - All the districts are included

Table 6 - Currently Employed person by Industry group (Based on ISIC Third Revision)

Year	Industry group														
	Total	1	2	3	4	5	6	7	8	9	10	11	12	13	14
*2002	6519415	2247602	1072720	286543	838796	117556	309553	168973	524724	227785	82260	108458	93252	317121	124072
**2003	7012755	2384397	1156682	371985	867131	121627	363393	191390	541070	262440	98107	108681	75858	333477	136519
***2004 1st Q	7336708	2354859	1242362	383344	1006731	133884	400525	170930	568978	296426	113818	112601	64905	321773	165571
****2004 2 nd Q	7313647	2608143	1239447	390334	879046	82110	460019	193161	503919	244823	89361	116973	78772	289233	138304
****2004 3rd Q	7304547	2492399	1220862	343535	934249	78609	418144	186874	514032	264829	113758	110453	65878	344400	216527

Industry group

- | | |
|--|--|
| 1 Agriculture Forestry and Fishery (A,B) | 8 Public Administration and Defence,Compulsory Social Security (L) |
| 2 Manufacturing (D) | 9 Education (M) |
| 3 Construction (F) | 10 Health and Social work (N) |
| 4 Wholesale and Retail Trade,Repair of Motor Vehicles,
Motorcycles and Personal and Household Goods (G) | 11 Other Community,Social and Personal Service Activities (O) |
| 5 Hotels and Restaurants (H) | 12 Private Households with Employed Persons (P) |
| 6 Transport, Storage and Communication (I) | 13 Miscellaneous Labour work |
| 7 Financial Intermediation and Real Estate,
Renting and Business Activities (J,K) | 14 Other (C,E,Q) |

Other

- Minning & Quarrying (C)
- Electricity,Gas and Water supply (E)
- Extra Teritorial Organizations & bodies (Q)
- Industries not adequately described

Note: The tabulation groups based on ISIC (Rev.3) are indicated as A,B,C.....Q. Due to the limitations on reliability (based on CV),some of these groups have been combined.

- * - Excluding Northern and Eastern provinces
- ** - Including Eastern province but Excluding Northern province
- *** - Excluding Vavunia,Mulathivu,Kilinochchi districts.
- **** - All the districts are included

Table 6A - Currently Employed person by Industry group - Male (Based on ISIC Third Revision)

Year	Total	Industry group						
		1	2	4	7	8	9	Other
*2002	4395164	1397423	569761	656505	115203	387301	70813	1198158
**2003	4833483	1529117	624791	681185	138146	405572	98074	1356598
***2004 1st Q	5037384	1479343	668667	813172	139335	388208	115026	1433633
**** 2004 2nd Q	5049101	1692915	663480	708990	136396	368932	99461	1378927
**** 2004 3rd Q	4991170	1545948	681218	739406	119443	393041	83358	1428756

Table 6B - Currently Employed person by Industry group - Female (Based on ISIC Third Revision)

Year	Total	Industry group						
		1	2	4	7	8	9	Other
*2002	2124250	850179	502959	182291	53770	137423	156972	240656
**2003	2179272	855280	531891	185946	53243	135498	164365	253049
***2004 1st Q	2299324	875516	573695	193559	31595	180770	181400	262789
**** 2004 2nd Q	2264546	915228	575968	170056	56765	134987	145362	266180
**** 2004 3rd Q	2313377	946450	539644	194843	67431	120991	181471	262547

Industry group

1 Agriculture Forestry and Fishery (A,B)

2 Manufacturing (D)

4 Wholesale and Retail Trade, Repair of Motor Vehicles,
Motorcycles and Personal and Household Goods (G)7 Financial Intermediation and Real Estate,
Renting and Business Activities (J,K)

8 Public Administration and Defence, Compulsory Social Security (L)

9 Education (M)

Other

Mining & Quarrying (C)

Electricity, Gas and Water supply (E)

Extra Territorial Organizations & bodies (Q)

Industries not adequately described

Construction (F)

Hotels and Restaurants (H)

Transport, Storage and Communication (I)

Classification categories of industries have been revised based on ISIC - Rev. 3, commencing from 2002 first quarter.

Note: The tabulation groups based on ISIC (Rev.3) are indicated as A,B,C.....Q. Due to the limitations on reliability (based on CV), some of these groups have been combined.

* - Excluding Northern and Eastern provinces

** - Including Eastern province but Excluding Northern province

*** - Excluding Vavunia, Mulathivu, Kilinochchi districts.

**** - All the districts are included

Table 7 - Currently Employed person by Occupation group (Based on ISCO 88)

Year	Total	Occupation group										
		1	2	3	4	5	6	7	8	9	10	0
*2002	6519415	85553	352238	316763	283719	406992	510148	1579024	935477	373588	1608511	67402
**2003	7012755	88043	367654	341634	303828	328796	628729	1634289	1084436	419540	1735336	80470
***2004 1st Q	7336708	85651	463832	390000	300840	304024	750201	1397102	1114835	502142	1962684	65397
****2004 2nd Q	7313647	100942	367989	362448	298814	443806	620898	1454905	1128503	454644	2039631	41066
****2004 3rd Q	7304547	132745	407918	341386	299129	431813	629286	1510828	1044826	447753	1986786	72078

Occupation group

- | | |
|---|--|
| 1 Senior Officials and Managers | 7 Skilled Agricultural and Fishery workers |
| 2 Professionals | 8 Craft and Related workers |
| 3 Technical and Associate Professionals | 9 Plant and Machine operators and Assemblers |
| 4 Clerks | 10 Elementary occupations |
| 5 Proprietors and Managers of Enterprises | 0 Unidentified |
| 6 Sale and Service workers | |

Note: It is to be noted here that these occupation groups are based on ISCO - 88, but they are not necessarily the **Major Groups** of ISCO - 88 classification

* - Excluding Northern and Eastern provinces

** - Including Eastern province but Excluding Northern province

*** - Excluding Vavunia, Mulathivu, Kilinochchi districts.

**** - All the districts are included

Table 7A - Currently Employed person by Occupation group - Male (Based on ISCO 88)

Year	Total	Occupation group										
		1	2	3	4	5	6	7	8	9	10	0
*2002	4395164	67276	146656	215548	151511	318172	379695	1024190	596472	335568	1097444	62633
**2003	4833483	71574	161375	236263	167584	260270	464633	1109200	711720	368452	1205366	77047
***2004 1st Q	5037384	62095	212829	265840	156222	256351	550478	921979	739623	460188	1347881	63897
****2004 2nd Q	5009079	73408	169102	247005	176146	373383	446487	983327	733192	426400	1380630	40022
****2004 3rd Q	4991170	101596	158439	239086	163700	345299	468504	1009301	687933	414298	1333030	69984

Table 7B - Currently Employed person by Occupation group - Female (Based on ISCO 88)

Year	Total	Occupation group										
		1	2	3	4	5	6	7	8	9	10	0
*2002	2124250	18277	205582	101215	132209	88819	130453	554835	339005	38020	511066	4769
**2003	2179272	16469	206279	105370	136245	68526	164096	525090	372716	51088	529971	3423
***2004 1st Q	2299324	23557	251004	124161	144618	47673	199722	475122	375212	41953	614803	1500
****2004 2nd Q	2263501	27535	198887	115444	122668	70422	174411	471578	395311	28244	659001	1044
****2004 3rd	2313377	31149	249480	102300	135428	86515	160781	501527	356893	33455	653756	2094

Occupation group

1 Senior Officials and Managers

2 Professionals

3 Technical and Associate Professionals

4 Clerks

5 Proprietors and Managers of Enterprises

6 Sale and Service workers

7 Skilled Agricultural and Fishery workers

8 Craft and Related workers

9 Plant and Machine operators and Assemblers

10 Elementary occupations

0 Unidentified

Note: It is to be noted here that these occupation groups are based on ISCO - 88, but they are not necessarily the **Major Groups** of ISCO - 88 classification

- The estimates in these cells have a CV value around 20 percent

* - Excluding Northern and Eastern provinces

** - Including Eastern province but Excluding Northern province

*** - Excluding Vavunia, Mulathivu, Kilinochchi districts.

**** - All the districts are included

TABLE 8 - CURRENTLY EMPLOYED PERSONS BY HOURS PER WEEK ACTUALLY WORKED AT THE MAIN JOB AND MAJOR INDUSTRIAL GROUP (PERCENTAGE) - BOTH SEXES

(THIRD QUARTER 2004)

MAJOR INDUSTRIAL GROUP	TOTAL	0 *	1 - 9	10 - 19	20 - 29	30 - 39	40 - 49	50 & OVER
Total	100.0	4.3	1.4	4.9	9.8	13.1	35.1	31.5
1	100.0	6.3	2.0	9.0	14.6	17.5	35.2	15.4
2	100.0	2.5	1.2	3.1	8.5	9.8	39.7	35.3
3	100.0	5.3	0.8	4.5	11.4	14.5	29.3	34.2
4	100.0	2.4	0.6	2.5	5.9	8.4	26.9	53.2
5	100.0	1.4		0.3	5.1	1.9	36.7	54.6
6	100.0	1.2	1.0	0.9	2.8	4.2	26.3	63.6
7	100.0	3.0	0.7	2.5	0.8	5.4	54.1	33.3
8	100.0	2.0	0.0	0.1	1.1	2.4	51.9	42.4
9	100.0	12.4	2.5	5.2	14.5	39.3	23.4	2.8
10	100.0	1.2	1.8	0.9	6.8	5.6	48.1	35.7
11	100.0	4.0	4.3	6.7	8.2	5.9	29.2	41.8
12	100.0		2.6	4.7	2.2	6.8	7.4	76.3
13	100.0	5.2	0.8	6.8	15.9	24.9	33.1	13.2
14	100.0	4.3	1.9	1.6	7.2	9.7	34.4	40.8

* Has a job but not at work during the reference week

.. Negligible

Industry group

1 Agriculture Forestry and Fishery (A,B)

2 Manufacturing (D)

3 Construction (F)

4 Wholesale and Retail Trade, Repair of Motor Vehicles, Motorcycles and Personal and Household Goods (G)

5 Hotels and Restaurants (H)

6 Transport, Storage and Communication (I)

7 Financial Intermediation and Real Estate, Renting and Business Activities (J,K)

8 Public Administration and Defence, Compulsory Social Security (L)

9 Education (M)

10 Health and Social work (N)

11 Other Community, Social and Personal Service Activities (O)

12 Private Households with Employed Persons (P)

13 Miscellaneous Labour work

14 Other (C,E,Q)

Other

Minning & Quarrying (C)

Electricity, Gas and Water supply (E)

Extra Territorial Organizations & bodies (Q)

Industries not adequately described

Note: The tabulation groups based on ISIC (Rev.3) are indicated as A,B,C.....Q. Due to the limitations on reliability (based on CV), some of these groups have been combined.

TABLE 8A - CURRENTLY EMPLOYED PERSONS BY HOURS PER WEEK ACTUALLY WORKED AT THE MAIN JOB AND MAJOR INDUSTRIAL GROUP (PERCENTAGE) - MALE

		(THIRD QUARTER 2004)							
MAJOR INDUSTRIAL GROUP	TOTAL	0 *	1 - 9	10 - 19	20 - 29	30 - 39	40 - 49	50 & OVER	
Total	100.0	4.2	1.0	4.0	8.1	11.9	33.7	37.2	
1	100.0	6.3	1.0	7.0	13.3	17.6	34.9	19.9	
2	100.0	3.1	1.3	2.7	3.7	8.3	41.3	39.6	
3	100.0	5.5	0.8	4.6	11.8	14.6	29.1	33.6	
4	100.0	2.7	0.0	1.8	4.3	6.8	27.7	56.6	
5	100.0			0.2	3.7		35.1	61.1	
6	100.0	1.2	0.9	0.9	2.9	3.8	25.9	64.5	
7	100.0	2.7	1.1	0.6	1.3	7.6	44.0	42.7	
8	100.0	2.2	0.0	0.0	1.3	0.6	44.1	51.7	
9	100.0	9.0	2.1	9.0	11.0	43.3	20.3	5.2	
10	100.0		4.5		10.5	7.2	36.8	41.0	
11	100.0	3.3	5.3	5.7	7.8	6.2	27.2	44.5	
12	100.0			9.2			10.0	80.8	
13	100.0	5.6	1.0	7.6	14.7	26.9	31.1	13.0	
14	100.0	4.5	2.2	1.9	8.4	10.8	30.1	42.1	

* Has a job but not at work during the reference week

..Negligible

Industry group

1 Agriculture Forestry and Fishery (A,B)

2 Manufacturing (D)

3 Construction (F)

4 Wholesale and Retail Trade, Repair of Motor Vehicles, Motorcycles and Personal and Household Goods (G)

5 Hotels and Restaurants (H)

6 Transport, Storage and Communication (I)

7 Financial Intermediation and Real Estate, Renting and Business Activities (J,K)

8 Public Administration and Defence, Compulsory Social Security (L)

9 Education (M)

10 Health and Social work (N)

11 Other Community, Social and Personal Service Activities (O)

12 Private Households with Employed Persons (P)

13 Miscellaneous Labour work

14 Other (C,E,Q)

Other

Minning & Quarrying (C)

Electricity, Gas and Water supply (E)

Extra Territorial Organizations & bodies (Q)

Industries not adequately described

Note: The tabulation groups based on ISIC (Rev.3) are indicated as A,B,C.....Q. Due to the limitations on reliability (based on CV), some of these groups have been combined.

TABLE 8B - CURRENTLY EMPLOYED PERSONS BY HOURS PER WEEK ACTUALLY WORKED AT THE MAIN JOB AND MAJOR INDUSTRIAL GROUP (PERCENTAGE) - FEMALE

(THIRD QUARTER 2004)

MAJOR INDUSTRIAL GROUP	TOTAL	0 *	1 - 9	10 - 19	20 - 29	30 - 39	40 - 49	50 & OVER
Total	100.0	4.6	2.3	7.0	13.4	15.5	38.1	19.0
1	100.0	6.2	3.7	12.1	16.7	17.5	35.8	8.0
2	100.0	1.7	1.0	3.6	14.6	11.8	37.6	29.9
3	100.0					12.7	33.7	53.6
4	100.0	1.4	2.7	5.3	12.0	14.8	23.7	40.2
5	100.0	9.4		1.0	14.0	13.1	46.8	15.5
6	100.0	4.4	9.4			26.9	51.7	7.6
7	100.0	3.7		5.8		1.6	72.2	16.7
8	100.0	1.5		0.3	0.5	8.3	77.3	12.2
9	100.0	13.9	2.6	3.4	16.0	37.5	24.8	1.7
10	100.0	2.1		1.4	4.3	4.5	55.5	32.2
11	100.0	6.0	1.2	9.5	9.3	4.8	35.0	34.2
12	100.0		3.4	3.4	2.9	8.7	6.6	75.0
13	100.0	3.0		2.8	21.9	14.2	43.9	14.3
14	100.0	3.6				3.0	60.6	32.8

* Has a job but not at work during the reference week

.. Negligible

Industry group

1 Agriculture Forestry and Fishery (A,B)

2 Manufacturing (D)

3 Construction (F)

4 Wholesale and Retail Trade,Repair of Motor Vehicles,
Motorcycles and Personal and Household Goods (G)

5 Hotels and Restaurants (H)

6 Transport, Storage and Communication (I)

7 Financial Intermediation and Real Estate,
Renting and Business Activities (J,K)

8 Public Administration and Defence,Compulsory Social Security (L)

9 Education (M)

10 Health and Social work (N)

11 Other Community,Social and Personal Service Activities (O)

12 Private Households with Employed Persons (P)

13 Miscellaneous Labour work

14 Other (C,E,Q)

Other

Minning & Quarrying (C)

Electricity,Gas and Water supply (E)

Extra Teritorial Organizations & bodies (Q)

Industries not adequately described

Note: The tabulation groups based on ISIC (Rev.3) are indicated as A,B,C.....Q.Due to the limitations on reliability (based on CV),some of these groups have been combined.

**TABLE 9 - HISTORICAL TABLE OF CURRENTLY UNEMPLOYED PERSONS BY AGE GROUPS
(PERCENTAGE) - BOTH SEXES**

YEAR	TOTAL	AGE GROUPS				
		15 - 19 YRS	20 - 24 YRS	25 - 29 YRS	30 - 39 YRS	40 + YRS
*1990	100.0	20.3	40.3	19.3	13.2	7.1
*1991	100.0	19.3	42.2	16.7	15.8	6.0
*1992	100.0	19.2	40.9	20.4	13.4	6.1
*1993	100.0	20.4	38.5	18.9	15.5	6.8
*1994	100.0	22.4	41.2	15.6	15.5	5.5
*1995	100.0	21.1	38.2	20.1	15.1	5.5
*1996	100.0	24.0	39.3	18.1	14.3	4.3
*1997	100.0	22.5	41.5	19.0	12.7	4.3
*1998	100.0	21.9	40.8	17.6	13.6	6.0
*1999	100.0	23.9	40.5	17.2	12.5	5.9
*2000	100.0	19.5	44.4	18.4	11.9	5.8
*2001	100.0	21.2	45.4	17.8	10.4	5.1
*2002	100.0	19.8	47.1	16.6	11.0	5.5
**2003	100.0	19.9	45.8	17.2	11.6	5.6
***2004 1st Q	100.0	21.6	42.4	16.5	11.5	8.0
**** 2004 2nd Q	100.0	21.2	44.6	16.1	12.1	6.0
**** 2004 3rd Q	100.0	16.2	52.5	17.5	8.4	5.4

* - Excluding Northern and Eastern provinces

** - Including Eastern province but Excluding Northern province

*** - Excluding Vavunia, Mulathivu, Kilinochchi districts.

**** - All the districts are included

**TABLE 9A - HISTORICAL TABLE OF CURRENTLY UNEMPLOYED PERSONS BY AGE GROUPS
(PERCENTAGE) - MALE**

YEAR	TOTAL	AGE GROUPS				
		15 - 19 YRS	20 - 24 YRS	25 - 29 YRS	30 - 39 YRS	40+ YRS
*1990	100.0	23.8	41.2	16.1	9.6	9.2
*1991	100.0	23.0	42.6	15.1	11.7	7.7
*1992	100.0	21.8	42.7	18.5	10.0	7.1
*1993	100.0	24.0	39.5	16.0	12.7	8.0
*1994	100.0	24.3	40.8	13.3	13.4	8.6
*1995	100.0	22.3	38.2	19.0	12.9	7.6
*1996	100.0	27.2	39.6	16.9	10.9	5.4
*1997	100.0	25.0	41.5	17.2	11.5	4.8
*1998	100.0	27.7	39.6	16.5	9.5	6.7
*1999	100.0	27.6	40.6	14.3	9.3	8.2
*2000	100.0	24.0	46.4	15.2	9.1	5.3
*2001	100.0	25.4	46.3	15.0	7.1	6.2
*2002	100.0	22.2	49.1	13.5	8.3	6.9
**2003	100.0	22.7	47.6	14.8	8.3	6.6
***2004 1st Q	100.0	21.9	47.0	14.3	7.5	9.3
**** 2004 2nd Q	100.0	24.1	42.5	14.4	10.7	8.2
**** 2004 3rd Q	100.0	18.5	53.2	14.6	8.4	5.3

**TABLE 9B - HISTORICAL TABLE OF CURRENTLY UNEMPLOYED PERSONS BY AGE GROUPS
(PERCENTAGE) - FEMALE**

YEAR	TOTAL	AGE GROUPS				
		15 - 19 YRS	20 - 24 YRS	25 - 29 YRS	30 - 39 YRS	40+ YRS
*1990	100.0	17.0	39.4	22.2	16.6	5.0
*1991	100.0	16.3	42.0	18.0	19.2	4.6
*1992	100.0	16.7	39.1	22.2	16.9	5.3
*1993	100.0	12.8	34.1	23.7	21.8	7.7
*1994	100.0	16.7	37.6	21.4	20.6	3.9
*1995	100.0	19.9	38.3	21.2	17.2	3.4
*1996	100.0	21.0	39.0	19.2	17.4	3.2
*1997	100.0	20.1	41.6	20.7	13.8	3.8
*1998	100.0	17.1	41.8	18.6	17.0	5.4
*1999	100.0	20.2	40.5	20.0	15.6	3.7
*2000	100.0	15.1	42.3	21.5	14.8	6.3
*2001	100.0	16.7	44.5	20.9	14.1	3.8
*2002	100.0	17.5	45.1	19.5	13.7	4.2
**2003	100.0	17.2	44.1	19.4	14.7	4.6
***2004 1st Q	100.0	21.4	37.5	18.8	15.8	6.6
**** 2004 2nd Q	100.0	18.3	46.6	17.8	13.4	3.9
**** 2004 3rd Q	100.0	14.2	51.9	20.2	8.4	5.4

* - Excluding Northern and Eastern provinces

** - Including Eastern province but Excluding Northern province

*** - Excluding Vavunia, Mulathivu, Kilinochchi districts.

**** - All the districts are included

TABLE 10 - HISTORICAL TABLE OF CURRENTLY UNEMPLOYED PERSONS BY LEVEL OF EDUCATION (PERCENTAGE) - BOTH SEXES

YEAR	TOTAL	LEVEL OF EDUCATION			
		BELOW GRADE 5	GRADES 5 - 9/ YEARS 6 - 10	GCE(O/L) NCGE	GCE(A/L) HNCE AND ABOVE
*1990	100.0	8.5	49.7	26.5	15.4
*1991	100.0	9.0	45.7	30.3	15.1
*1992	100.0	9.2	50.5	27.0	13.7
*1993	100.0	8.3	44.9	28.7	18.0
*1994	100.0	8.6	44.9	28.3	18.2
*1995	100.0	5.5	47.1	29.1	18.4
*1996	100.0	7.9	47.1	26.1	19.0
*1997	100.0	5.7	44.7	28.2	21.4
*1998	100.0	5.8	44.2	27.1	22.9
*1999	100.0	4.4	41.9	29.2	24.5
*2000	100.0	3.1	45.6	26.0	25.3
*2001	100.0	3.6	40.7	27.3	28.4
*2002	100.0	4.7	40.7	25.2	29.4
**2003	100.0	4.8	40.2	26.1	28.9
***2004 1st Q	100.0	6.6	40.1	25.8	27.5
**** 2004 2nd Q	100.0	6.3	39.8	23.3	30.6
**** 2004 3rd Q	100.0	3.7	32.7	30.1	33.6

* - Excluding Northern and Eastern provinces
 ** - Including Eastern province but Excluding Northern province
 *** - Excluding Vavunia, Mulathivu, Kilinochchi districts.
 **** - All the districts are included

TABLE 10A - HISTORICAL TABLE OF CURRENTLY UNEMPLOYED PERSONS BY LEVEL OF EDUCATION (PERCENTAGE) - MALE

YEAR	TOTAL	LEVEL OF EDUCATION			
		BELOW GRADE 5	GRADES 5 - 9/ YEARS 6 - 10	GCE(O/L) NCGE	GCE(A/L) HNCE AND ABOVE
*1990	100.0	10.6	57.7	23.3	8.4
*1991	100.0	11.2	53.2	25.0	10.5
*1992	100.0	9.9	57.4	25.1	7.9
*1993	100.0	11.4	47.7	28.0	12.9
*1994	100.0	11.4	50.3	27.0	11.3
*1995	100.0	5.3	54.4	29.4	10.9
*1996	100.0	8.7	56.9	23.8	10.6
*1997	100.0	7.0	54.5	25.0	13.5
*1998	100.0	6.7	54.8	24.7	13.9
*1999	100.0	4.8	48.3	29.1	17.8
*2000	100.0	3.9	54.7	26.0	15.4
*2001	100.0	4.4	50.9	25.2	19.5
*2002	100.0	5.6	50.1	24.7	19.6
**2003	100.0	5.5	47.3	27.7	19.5
***2004 1st Q	100.0	3.9	47.2	29.1	19.7
**** 2004 2nd Q	100.0	11.2	44.2	25.3	19.3
**** 2004 3rd Q	100.0	4.6	40.6	28.2	26.6

TABLE 10B - HISTORICAL TABLE OF CURRENTLY UNEMPLOYED PERSONS BY LEVEL OF EDUCATION (PERCENTAGE) - FEMALE

YEAR	TOTAL	LEVEL OF EDUCATION			
		BELOW GRADE 5	GRADES 5 - 9/ YEARS 6 - 10	GCE(O/L) NCGE	GCE(A/L) HNCE AND ABOVE
*1990	100.0	6.4	42.2	29.5	21.9
*1991	100.0	7.1	39.6	34.5	18.8
*1992	100.0	8.5	43.6	28.9	19.4
*1993	100.0	5.7	42.5	29.4	22.5
*1994	100.0	6.9	39.6	29.6	24.9
*1995	100.0	5.7	40.0	28.8	25.5
*1996	100.0	7.1	37.6	28.3	27.0
*1997	100.0	4.5	35.3	31.3	28.9
*1998	100.0	5.1	35.4	29.1	30.5
*1999	100.0	4.0	35.5	29.3	31.2
*2000	100.0	2.3	36.3	26.1	35.3
*2001	100.0	2.6	29.7	29.7	38.0
*2002	100.0	3.9	31.4	25.6	39.1
**2003	100.0	4.0	33.5	24.6	37.8
***2004 1st Q	100.0	9.3	32.8	22.4	35.5
**** 2004 2nd Q	100.0	1.5	35.6	21.4	41.5
**** 2004 3rd Q	100.0	2.9	25.7	31.7	39.7

* - Excluding Northern and Eastern provinces

** - Including Eastern province but Excluding Northern province

*** - Excluding Vavunia, Mulathivu, Kilinochchi districts.

**** - All the districts are included

TABLE 11 - CURRENTLY UNEMPLOYED PERSONS BY LEVEL OF EDUCATION AND SECTOR

(THIRD QUARTER 2004)

SECTOR	TOTAL	LEVEL OF EDUCATION			
		BELOW GRADE 5	GRADE 5 - 9/ YEAR 6 - 10	GCE(O/L)/ NCGE	GCE(A/L)/ HNCE AND ABOVE
BOTH SECTORS	679066	25169	221863	204119	227915
URBAN	78217	6025	15247	33198	23746
* RURAL	600849	19144	206615	170921	204169

* Including estate sector

**TABLE 11A - CURRENTLY UNEMPLOYED PERSONS BY LEVEL OF EDUCATION AND SECTOR
(PERCENTAGE)**

(THIRD QUARTER 2004)

SECTOR	TOTAL	LEVEL OF EDUCATION			
		BELOW GRADE 5	GRADE 5 - 9/ YEAR 6 - 10	GCE(O/L)/ NCGE	GCE(A/L)/ HNCE AND ABOVE
BOTH SECTORS	100.0	3.7	32.7	30.1	33.6
URBAN	100.0	7.7	19.5	42.4	30.4
* RURAL	100.0	3.2	34.4	28.4	34.0

* Including estate sector

TABLE 12 - CURRENTLY UNEMPLOYED PERSONS BY SEX AND DURATION OF UNEMPLOYMENT

(THIRD QUARTER 2004)

SEX	TOTAL	DURATION		
		LESS THAN 6 MONTHS	6 TO LESS THAN 12 MONTHS	12 + MONTHS
BOTH SEXES	630786	95194	78195	457397
%	100.0	15.1	12.4	72.5
MALE	303997	51667	38391	213939
%	100.0	17.0	12.6	70.4
FEMALE	326789	43527	39804	243458
%	100.0	13.3	12.2	74.5

TABLE 13 - CURRENTLY UNEMPLOYED PERSONS WHO NEVER HAD A JOB BY SEX AND SECTOR

(THIRD QUARTER 2004)

SEX	ALL ESIDENTIA SECTORS	URBAN SECTOR	RURAL SECTOR
BOTH SEXES	528997	55359	473638
%	100.0	10.5	89.5
MALE	224712	21158	203554
%	100.0	9.4	90.6
FEMALE	304285	34202	270083
%	100.0	11.2	88.8

TABLE 14 - CURRENTLY UNEMPLOYED PERSONS BY REASONS FOR NOT ACTIVELY SEEKING WORK SEX AND SECTOR (PERCENTAGE)

(THIRD QUARTER 2004)

SEX & SECTOR	REASONS FOR NOT ACTIVELY SEEKING WORK			
	TOTAL	DISCOURAGED NOT ABLE TO GET A JOB	BELIEVE NO SUITABLE WORK AVAILABLE	OTHER REASON
TOTAL	100.0	51.2	10.2	38.6
MALE	100.0	43.5	24.8	31.7
FEMALE	100.0	55.2	2.6	42.2
TOTAL	100.0	51.2	10.2	38.6
URBAN	100.0			100.0
* RURAL	100.0	54.2	10.8	35.0

.. Negligible

* Including estate sector

TABLE 15 - NUMBER OF PERSONS NOT IN THE LABOUR FORCE BY REASONS FOR NOT IN THE LABOUR FORCE SEX AND SECTOR (PERCENTAGE)

(THIRD QUARTER 2004)

SEX & SECTOR	TOTAL NOT IN LABOUR FORCE	REASONS				
		ENGAGED IN STUDIES	HOUSEHOLD WORK	DISABLE OR INFIRM	RETIRED	OTHER REASONS
TOTAL	100.0	37.5	39.7	2.6	15.5	4.7
MALE	100.0	59.9	2.9	5.0	23.8	8.4
FEMALE	100.0	27.0	56.9	1.5	11.6	2.9
TOTAL	100.0	37.5	39.7	2.6	15.5	4.7
URBAN	100.0	35.5	42.1	2.0	16.2	4.2
* RURAL	100.0	37.8	39.3	2.7	15.4	4.8

* Including estate sector

TABLE 16 - USUAL LABOUR FORCE STATUS (DURING THE PAST 12 MONTHS) OF THE HOUSEHOLD POPULATION 10 YEARS OF AGE AND OVER, BY AGE - BOTH SEXES

(THIRD QUARTER 2004)

AGE	HOUSEHOLD POP: (10 YEARS & OVER)	LABOUR FORCE						NOT IN LABOUR FORCE NUMBER
		TOTAL LABOUR FORCE	LABOUR FORCE PARTICI: RATE(%)	EMPLOYED		UNEMPLOYED		
				NUMBER	RATE (% TO TOTAL LABOUR FORCE)	NUMBER	RATE (% TO TOTAL LABOUR FORCE)	
ALL AGES	16702014	7703184	46.1	7078867	91.9	624317	8.1	8993454
10 - 14 YRS	*	*	*	*	*	*	*	*
15 - 19 YRS	1840512	381705	20.7	259767	68.1	121938	31.9	1458807
20 - 24 YRS	1795275	1108372	61.7	790648	71.3	317724	28.7	686903
25 - 29 YRS	1482580	1000852	67.5	901292	90.1	99560	9.9	481728
30 - 39 YRS	2875233	1886917	65.6	1838995	97.5	47922	2.5	985628
40 + YRS	6738460	3292515	48.9	3259006	99.0	33509	1.0	3444602

* Reliable estimates cannot be provided due to small cell sizes.

**TABLE 17 - HISTORICAL TABLE OF USUAL LABOUR FORCE STATUS (DURING THE PAST 12 MONTHS) OF THE HOUSEHOLD POPULATION
10 YEARS OF AGE AND OVER - BOTH SEXES**

YEAR	HOUSEHOLD POP: (10 YEARS & OVER)	LABOUR FORCE						NOT IN LABOUR FORCE NUMBER
		TOTAL LABOUR FORCE	LABOUR FORCE PARTICI: RATE(%)	EMPLOYED		UNEMPLOYED		
				NUMBER	RATE (% TO TOTAL LABOUR FORCE)	NUMBER	RATE (% TO TOTAL LABOUR FORCE)	
*1990	11573941	5423464	46.9	4480415	82.6	943049	17.4	6150477
*1991	11795793	5515831	46.8	4626243	83.9	889588	16.1	6279962
*1992	12058463	5524670	45.8	4630792	83.8	893878	16.2	6533791
*1993	12278055	5788175	47.1	4773069	82.5	1015107	17.5	6489882
*1994	12491815	5750618	46.0	5011626	87.1	738993	12.9	6741195
*1995	12735447	5787261	45.4	5090049	88.0	697213	12.0	6948187
*1996	12831240	5939606	46.3	5239568	88.2	700041	11.8	6891641
*1997	12869060	5985286	46.5	5290512	88.4	694778	11.6	6883788
*1998	12881060	6330442	49.2	5684159	89.8	646288	10.2	6550616
*1999	13168850	6385690	48.5	5791504	90.7	594187	9.3	6783178
*2000	13564020	6515494	48.0	5976066	91.7	539429	8.3	7048533
*2001	13871282	6441843	46.4	5922538	91.9	519305	8.1	7429439
*2002	14201396	6836316	48.1	6247168	91.4	589148	8.6	7368139
**2003	15651479	7416523	47.4	6799148	91.7	617375	8.3	8232348
***2004 1st Q	16315638	7800596	47.8	7124682	91.3	675914	8.7	8515042
****2004 2nd Q	16524967	7858495	47.6	7199531	91.6	658964	8.4	8666472
****2004 3rd Q	16702014	7703184	46.1	7078867	91.9	624317	8.1	8993454

* - Excluding Northern and Eastern provinces

** - Including Eastern province but Excluding Northern province

*** - Excluding Vavunia, Mulathivu, Kilinochchi districts.

**** - All the districts are included

TABLE 18 - STANDARD ERROR AND COEFFICIENT OF VARIATION OF SELECTED VARIABLES

	Estimated Value	Standard Error	Coefficient of Variation (%)	Estimated Value (Ratio)	Standard Error	Coefficient of Variation (%)
General labour force characteristics						
Population (10 years & over)	16702014	239020	1.43	-	-	-
Employed Population	7304547	131218	1.80	-	-	-
Unemployed Population	679066	43352	6.38	-	-	-
Employment Rate	-	-	-	0.92	0.005	0.57
Unemployment Rate	-	-	-	0.085	0.005	6.09
Labour Force	7983613	137496	1.72	-	-	-
Not in Labour Force	8718400	179246	2.06	-	-	-
Employed persons by major industry Groups						
1	2492399	129267	5.19	-	-	-
2	1220862	59100	4.84	-	-	-
3	343535	27362	7.96	-	-	-
4	934249	53791	5.76	-	-	-
5	78609	11621	14.78	-	-	-
6	418144	31313	7.49	-	-	-
7	186874	20071	10.74	-	-	-
8	514032	40691	7.92	-	-	-
9	264829	22607	8.54	-	-	-
10	113758	13970	12.28	-	-	-
11	110453	15254	13.81	-	-	-
12	65878	10038	15.24	-	-	-
13	344400	36944	10.73	-	-	-
14	216527	26341	12.17	-	-	-
Unemployed persons by level of education						
Below grade 5	25169	5669	22.52	-	-	-
Grade 5 - 9/Year 6 - 10	221863	21151	9.53	-	-	-
G.C.E.(O/L)/N.C.G.E.	204119	20625	10.1	-	-	-
G.C.E.(A/L)/H.N.C.E. & above	227915	22637	9.93	-	-	-

- | | |
|---|--|
| 1 Agriculture Forestry and Fishery (A,B) | 8 Public Administration and Defence,Compulsory Social Security (L) |
| 2 Manufacturing (D) | 9 Education (M) |
| 3 Construction (F) | 10 Health and Social work (N) |
| 4 Wholesale and Retail Trade,Repair of Motor Vehicles, Motorcycles and Personal and Household Goods (G) | 11 Other Community,Social and Personal Service Activities (O) |
| 5 Hotels and Restaurants (H) | 12 Private Households with Employed Person (P) |
| 6 Transport, Storage and Communication (I) | 13 Miscellaneous Labour work |
| 7 Financial Intermediation and Real Estate, Renting and Business Activities (J,K) | 14 Other (C,E,Q) |
| | Other |
| | Minning & Quarrying (C) |
| | Electricity,Gas and Water supply (E) |
| | Extra Teritorial Organizations & bodies (Q) |
| | Industries not adequately described |