



Colombo Consumer Price Index (CCPI)-(BASE 2021=100)

July 2024

31-07-2024

Department of Census and Statistics

Ministry of Finance, Economic Stabilization and National policies

The Department of Census and Statistics (DCS) is the authorized agency to compile Colombo Consumer Price Index (CCPI). Following internationally accepted guidelines, it has been arranged to revise the base year from 2013=100 to 2021=100 in order to accommodate the changing expenditure patterns and in cooperate changes of goods & services available in the market. Accordingly, with respect to the new base, CCPI (Base 2021=100) will be released monthly commencing from February 2023 on the last working day of each month. It is emphasized that index numbers or inflation figures compiled under different base years cannot be compared.

The CCPI is compiled to indicate average changes in the prices of goods and services purchased by households in urban areas of Colombo district. The price collection of the index (Base 2021=100) has covered 10 price collection centers in Peliyagoda, Maradana, Wellawatta, Dematagoda Grandpass, Kirulapone, Nugegoda, Rathmalana, and two Dedicated Economic Centers namely Narahenpita and Rathmalana.

Prices are collected weekly from the outlets located within each of the above market areas including Sathosa and a supermarket. The consumer basket includes 426 items, which represent the typical urban household consumption expenditure. The CPI weights are derived from the Household Income and Expenditure Survey (HIES) 2019.

- ▮ The CCPI for all items for the month of July 2024 was 194.7 and it records a decrease of 0.9 index points compared to June 2024, for which the index was 195.6.
- ▮ The overall rate of inflation as measured by CCPI on Y-on-Y basis is 2.4% in July 2024

Content

01. Variations in Colombo Consumer Price Index (Page 1)
02. Inflation:(Page 5)

[Source Publication](#) For more details on the revision of base year, please click here: [Technical Note on Base Year Revision](#)

statistics.gov.lk

1. Variations in Colombo Consumer Price Index

Month on month changes in the Colombo Consumer Price Index is briefly described below.

Table 1- Monthly Changes by main Groups of Market Basket

Major Group*	Index Number			Monthly Changes of the Expenditure Values(Rs.)			Monthly Changes of the Index (%) ¹		
	Jul.	Jun.	Jul.	Jul.	Jun.	Jul.	Jul.	Jun.	Jul.
	2023	2024	2024	2023	2024	2024	2023	2024	2024
All Items	190.2	195.6	194.7	-1973.38	1380.97	-788.98	-1.12	0.77	-0.44
Food and Non Alcoholic Beverages	235.8	239.1	239.4	25.56	1560.68	58.06	0.01	0.88	0.03
Non Food	173.9	180.1	178.8	-1998.94	-179.71	-847.04	-1.13	-0.10	-0.47
Alcoholic beverages Tobacco and Narcotic	199.2	235.1	238.9	318.08	-36.88	58.41	0.18	-0.02	0.03
Housing, Water, Electricity, Gas and Other Fuels	144.1	145.1	142.9	-2669.33	-129.77	-648.14	-1.51	-0.07	-0.36
Furnishing Household Equipment and Routine Household Maintenance	184.1	187.7	188.4	1.00	9.13	22.82	0.00	0.01	0.01
Health	173.4	178.3	179.1	-43.07	190.54	27.59	-0.02	0.11	0.02
Transport	221.8	236.7	233.8	22.56	-312.23	-329.79	0.01	-0.18	-0.18
Miscellaneous Goods and Services	183.6	189.6	190.1	7.98	-3.65	13.76	0.00	0.00	0.01
Other	187.5	194.6	194.6	363.84	103.15	8.32	0.21	0.06	0.00

Note 1 : There are 12 main groups of the market basket. Significant changes in July 2024 were noted in seven groups, details on which are given in Table2.

Note 2: Monthly change of the index (%) is calculated using expenditure values.

Note 3: ¹ Percentage of items does not tally with overall percentage due to rounding off.

1.1 Month on Month (M on M) Change of CCPI:

The CCPI for all items for the month of July 2024 was 194.7 and it records a decrease of 0.9 index points or 0.44 percentage compared to the month of June 2024 for which the index was 195.6. This represents a decrease in expenditure value by Rs 788.98 in the "Market Basket".

1.1.1 Contribution to M on M Changes:

Contributions to the change in CCPI from June 2024 to July 2024 are given in Table 02. The month-on-month change was contributed by an increase in Food items by 0.03% and decrease in Non Food items by 0.47% respectively.

1.1.2 Contribution of Food and Non-Alcoholic Beverages items: 0.03%

As shown in table 02, increases in value change were reported for Fresh Fruits (0.09%), Vegetables (0.08%), Coconut oil (0.06%), Rice (0.05%), Egg (0.04%), Potatoes (0.04%), Milk powder (0.03%), Turmeric powder (0.03%), Green chilies (0.02%), Ulundu flour (0.01%), Dried Fish (0.01%), Vegetable oil (0.01%) and Big onions (0.01%).

While decreases in value change were reported for Fresh Fish (0.23%), Lime (0.08%), Chicken (0.05%), Coconuts (0.02%), Green gram (0.01%), Gram (0.01%), Sugar (0.01%), Pepper (0.01%), Curry powder (0.01%) and Ginger (0.01%).

1.1.3 Contribution of Non-Food items: -0.47%

Among Non-Food groups, decreases in value change were reported for the groups of 'Housing, Water, Electricity, Gas and Other Fuels' (*Electricity Bill*) (0.36%) and group of 'Transport' (*bus fare*) (0.18%).

While increases in value change were reported for the groups of 'Alcoholic beverages Tobacco and Narcotic' (0.03%), 'Health' (0.02%), 'Furnishing Household Equipment and Routine Household Maintenance' (0.01%) and 'Miscellaneous Goods and Services' (0.01%). Further, very slight price increase was reported in group of Clothing and Footwear'. Meanwhile, the price indices of 'Education', 'Communication', 'Recreation and Culture' and 'Restaurant and Hotels' groups remained unchanged during the month.

Table 02: Contribution to the change in CCPI from June 2024 to July 2024 (Base2021=100)

	Value Change			
	Rs.Cts.	% change		
		Increase	Decrease	Net effect
Food	58.06	0.47	0.43	0.03
1 Rice	84.63	0.05		
<i>Rice - (Kekulu - red)</i>	45.47	0.03		
<i>Rice - (Samba)</i>	23.32	0.01		
2 Ulundu flour	20.95	0.01		
3 Green gram	-15.12		0.01	
4 Gram	-10.44		0.01	
5 Chicken	-88.00		0.05	
6 Fresh Fish	-405.17		0.23	
7 Dried Fish	21.61	0.01		
8 Milk powder	46.44	0.03		
9 Eggs	64.61	0.04		
10 Coconuts	-33.84		0.02	
11 Coconut oil	101.91	0.06		
12 Vegetable oil	17.24	0.01		
13 Fresh Fruits	166.49	0.09		
<i>Banana</i>	28.15	0.02		
<i>Papaw</i>	75.78	0.04		
14 Vegetables	143.35	0.08		
15 Potatoes	63.00	0.04		
16 Big onions	15.37	0.01		
17 Green chillies	30.88	0.02		
18 Sugar	-19.41		0.01	
19 Pepper	-12.63		0.01	
20 Curry powder	-10.72		0.01	
21 Turmeric powder	62.57	0.03		
22 Limes	-146.82		0.08	
23 Ginger	-21.42		0.01	
Others	-17.39		0.01	

Non Food		-847.04	0.07	0.54	-0.47
24	Alcoholic beverages Tobacco and Narcotic	58.41	0.03		
	<i>Areca nuts</i>	<i>48.85</i>	<i>0.03</i>		
25	Housing, Water, Electricity, Gas and Other Fuels	-648.14		0.36	
	<i>Electricity bill</i>	<i>-584.03</i>		<i>0.33</i>	
	<i>L. P. Gas</i>	<i>-65.91</i>		<i>0.04</i>	
26	Furnishing Household Equipment and Routine Household Maintenance	22.82	0.01		
	<i>Refrigerators</i>	<i>12.63</i>	<i>0.01</i>		
27	Health	27.59	0.02		
	<i>Fees to Aurvadic Doctors</i>	<i>27.59</i>	<i>0.02</i>		
28	Transport	-329.79		0.18	
	<i>Petrol</i>	<i>-240.47</i>		<i>0.13</i>	
	<i>bus fare</i>	<i>-82.30</i>		<i>0.05</i>	
29	Miscellaneous Goods and Services	13.76	0.01		
	<i>Hand bags</i>	<i>13.94</i>	<i>0.01</i>		
	Others	8.32	0.00		
	All Items	-788.98	0.54	0.98	-0.44

*Percentages of items do not tally with overall percentage due to rounding off.

2. Inflation

The CCPI is an economic indicator constructed to measure inflation which is defined as percentage change in CCPI over the year. There are two measures of inflation in general use. One measure is Year on Year base or Point to Point inflation (The percentage change in the CPI during the last 12 months). The other measure is Moving Average Inflation (The percentage difference between the average Price Index of last 12 months & the average Price Index of previous 12 months).

Table 03: Movements of the CCPI (Base: 2021=100)

Year	Month	All Item				Food				Non Food			
		Index Number	% Change Month on Month	Inflation %		Index Number	% Change Month on Month	Inflation %		Index Number	% Change Month on Month	Inflation %	
				Y on Y	12 Month Moving Avg.			Y on Y	12 Month Moving Avg.			Y on Y	12 Month Moving Avg.
2023	July	190.2	-1.1	6.3	235.8	0.0	-1.4	173.9	-1.7	10.5			
	August	190.1	-0.1	4.0	232.8	-1.3	-4.8	174.9	0.6	8.7			
	September	191.8	0.9	1.3	234.1	0.6	-5.2	176.7	1.0	4.7			
	October	191.4	-0.2	1.5	229.5	-2.0	-5.2	177.8	0.6	4.9			
	November	193.4	1.0	3.4	230.3	0.3	-3.6	180.2	1.3	6.8			
	December	195.1	0.9	4.0	238.9	3.7	0.3	12.1	179.5	-0.4	5.8	20.0	
2024	January	200.7	2.9	6.4	14.2	247.9	3.8	3.3	8.5	183.9	2.5	7.9	17.1
	February	200.6	0.0	5.9	11.3	242.8	-2.1	3.5	5.4	185.6	0.9	7.0	14.2
	March	196.7	-1.9	0.9	8.0	237.8	-2.1	3.8	2.9	182.1	-1.9	-0.5	10.5
	April	195.2	-0.8	1.5	5.7	235.4	-1.0	2.9	1.2	180.9	-0.7	0.9	7.9
	May	194.1	-0.6	0.9	3.9	232.6	-1.2	0.0	-0.3	180.3	-0.3	1.3	6.0
	June	195.6	0.8	1.7	3.1	239.1	2.8	1.4	-0.5	180.1	-0.1	1.8	4.9
	July	194.7	-0.5	2.4	2.8	239.4	0.1	1.5	-0.2	178.8	-0.7	2.8	4.3

Note: Year on Year inflation, 12 Month Moving Average inflation and Month on Month change were calculated using the rounding off index numbers

2.1 Year on Year (Y-on-Y) Inflation

The overall rate of inflation as measured by the CCPI on Y-on-Y basis is 2.4% in July 2024 and Y-on-Y inflation calculated for the month of June 2024 was 1.7% (Table 3). The Y-on-Y inflation of Food Group increased to 1.5% in July 2024 from 1.4% in June 2024 and the Y-on-Y inflation of Non Food Group increased to 2.8% in July 2024 from 1.8% in June 2024.

2.2 Contribution to Y on Y inflation:

For the month of July 2024, on Y-on-Y basis, contribution to inflation by food commodities was 0.49%.

The contribution of Non Food items was 1.90%. This was mainly due to price increases in groups of items 'Transport' (0.80%), 'Alcoholic beverages Tobacco and Narcotics' (0.35%), 'Education' (0.34%), 'Restaurants and Hotels' (0.23%), Health (0.12%), 'Miscellaneous Goods and Services' (0.11%), 'Furnishing Household Equipment and Routine Household Maintenance' (0.08%), Communication (0.07%) and 'Recreation and Culture' (0.04%). However, price decreases were recorded in the groups of 'Clothing and Footwear' (0.02%), 'Housing, Water, Electricity, Gas and Other Fuels' (0.20%) Compared to the month of July 2023.

Table 04: Contribution to the increase in CCPI from July 2023 July 2024
(Base 2021=100)

Sub Group/Commodity	Value Change	Increase	Decrease	Net effect
	Rs.Cts.	%	%	%
Food and Non-Alcoholic Beverages	862.56	1.70	1.21	0.49
Rice	914.16	0.52		
Wheat flour	-16.46		0.01	
Chicken	-609.03		0.35	
Sea fish	-1231.18		0.70	
Dried Fish	-178.43		0.10	
Milk powder	-186.56		0.11	
Eggs	-53.76		0.03	
Coconuts	219.05	0.13		
Coconut oil	158.87	0.09		
Fresh Fruits	47.52	0.03		
Vegetable	749.61	0.43		
Potatoes	55.13	0.03		
Big Onions	424.81	0.24		
Sugar	148.06	0.08		
Dried chillies	-153.53		0.09	
Ginger	145.33	0.08		
Tea dust/ leaves	112.68	0.06		
Non Food	3323.46	2.12	0.22	1.90
Alcoholic beverages Tobacco and Narcotic	609.34	0.35		
<i>Arrack</i>	<i>147.25</i>	<i>0.08</i>		
<i>Whiskey</i>	<i>94.70</i>	<i>0.05</i>		
<i>Beer</i>	<i>26.87</i>	<i>0.02</i>		
<i>Cigarettes</i>	<i>219.88</i>	<i>0.13</i>		
Clothing and Footwear	-38.40		0.02	
Housing, Water, Electricity, Gas and Other Fuels	-344.48		0.20	
<i>Maintenance/ Reconstruction</i>	<i>114.67</i>	<i>0.07</i>		
<i>Water bills</i>	<i>1533.67</i>	<i>0.88</i>		
<i>Electricity bill</i>	<i>-2739.66</i>		<i>1.57</i>	
<i>L. P. Gas</i>	<i>312.68</i>	<i>0.18</i>		
<i>Kerosene oil</i>	<i>-46.58</i>		<i>0.03</i>	
Furnishing Household Equipment and Routine Household Maintenance	139.37	0.08		
Health	207.90	0.12		
<i>Purchase of medical/ pharmacy products</i>	<i>-10.40</i>		0.01	
<i>Fees to private medical practices</i>	<i>190.54</i>	<i>0.11</i>		
<i>Consultation fees to specialists</i>	<i>53.70</i>	<i>0.03</i>		
Transport	1391.16	0.80		
<i>Petrol</i>	<i>442.04</i>	<i>0.25</i>		
<i>Diesel</i>	<i>23.03</i>	<i>0.01</i>		
<i>bus fare</i>	<i>-20.89</i>		<i>0.01</i>	
Communication	115.51	0.07		
Recreation and Culture	65.62	0.04		
Education	595.42	0.34		
Restaurant and hotels	393.69	0.23		
Miscellaneous Goods and Services	188.33	0.11		
All Items	4186.02	3.82	1.43	2.40

*Percentages of items do not tally with overall percentage due to rounding off.

Movements in the CCPI (Base 2021=100) for Head Line, Food, Non Food and Year on Year Inflation

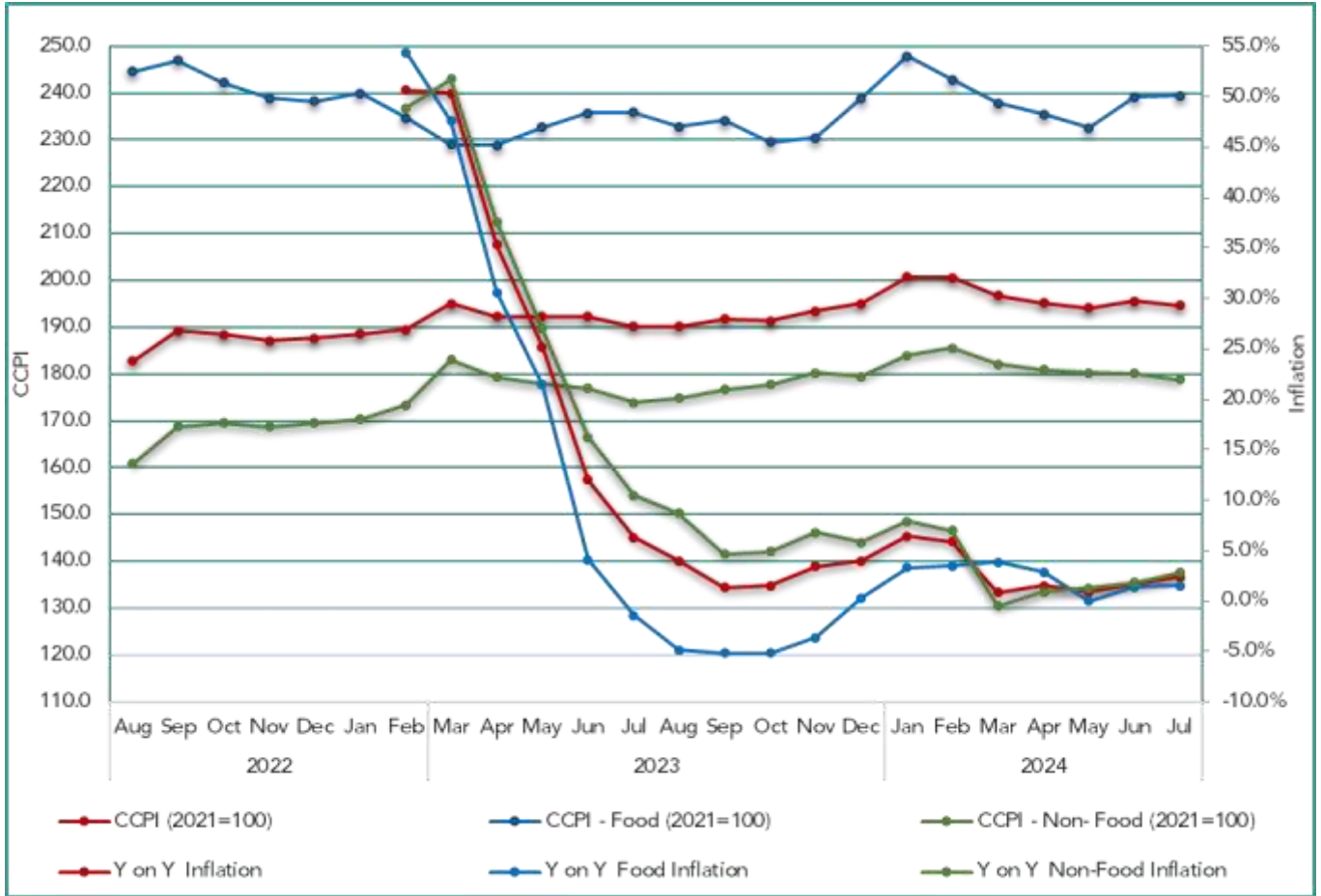


Table 05: Monthly average open market retail prices of selected items of Colombo Consumer Price Index July 2023, June & July 2024


Item	Unit	Retail Prices (Rs. Cts)			Retail Price Changes (%)	
		2023 Jul.	2024 Jun.	2024 Jul.	Jul. 24/ Jul. 23	Jul. 24 / Jun. 24
1. Rice– Kekulu – Red	Kg	157.82	198.09	204.90	29.83	3.44
2. Rice– Kekulu – White	Kg	192.45	211.35	212.36	10.35	0.48
3. Rice –Nadu - White	Kg	199.52	219.30	221.13	10.84	0.84
4. Rice –Nadu - Red	Kg	214.57	223.13	223.49	4.15	0.16
5. Rice– Samba	Kg	226.56	268.20	271.08	19.65	1.08
6. Cowpea	Kg	880.83	929.15	963.32	9.37	3.68
7.Green Grams	Kg	1205.01	1265.63	1213.51	0.71	-4.12
8. Coconut	Each	102.38	114.14	112.57	9.95	-1.38
9. Coconut Oil	750ml	456.43	481.67	526.83	15.42	9.38
10.Chicken	Kg	1417.38	1190.50	1152.18	-18.71	-3.22
11. Eggs	Each	55.13	49.05	52.37	-5.01	6.76
12. Red Onion	Kg	507.23	497.28	493.80	-2.65	-0.70
13. Big Onion	Kg	140.89	256.79	261.14	85.34	1.69
14. Potatoes	Kg	306.74	303.06	332.52	8.40	9.72
15. Garlic	Kg	641.50	647.01	633.45	-1.26	-2.10
16. Dried Chillies	Kg	1304.46	970.85	979.12	-24.94	0.85
17. Green Chillies	Kg	999.61	537.75	593.13	-40.66	10.30
18. Sugar	Kg	241.26	286.54	281.29	16.59	-1.83
19. Pepper	Kg	2548.83	2740.63	2671.34	4.81	-2.53
Vegetables-						
20. Ash Plantain	Kg	305.16	323.69	366.98	20.26	13.37
21. Carrot	Kg	499.99	390.85	547.82	9.57	40.16
22. Snake Gourd	Kg	404.19	460.48	411.29	1.76	-10.68
23. Tomatoes	Kg	496.38	442.17	577.36	16.31	30.57
24. Capsicum	Kg	573.24	639.87	901.96	57.34	40.96
25. Beetroot	Kg	472.57	621.98	645.58	36.61	3.79
26. Beans	Kg	614.93	804.70	737.76	19.97	-8.32
Fruits						
27. Banana	Kg	293.98	279.46	304.19	3.47	8.85
28. Papaw	Kg	227.05	222.52	256.21	12.84	15.14
29. Mangoes	Each	145.49	124.77	121.48	-16.50	-2.64
Fresh Fish –						
30. Seer	Kg	3916.44	3830.64	3631.19	-7.28	-5.21
31.Talapath	Kg	3098.92	2838.00	2881.16	-7.03	1.52
32.Paraw	Kg	2800.01	2537.06	2429.76	-13.22	-4.23
Dried Fish -						
33.Katta	Kg	2480.42	2198.46	2230.12	-10.09	1.44
34. Sprats	Kg	1285.13	1202.21	1217.71	-5.25	1.29
Fuel -						
35. Kerosene Oil	Lt	237.61	204.32	202.00	-14.99	-1.14
36. Petrol (CPC & IOC)	Lt	326.21	357.32	346.75	6.30	-2.96
37. Diesel (CPC & IOC)	Lt	308.36	319.86	317.00	2.80	-0.89
38. Gas- Avg.	12.5kg	3237.64	3811.52	3711.61	14.64	-2.62
	Litro	3047.57	3838.22	3722.15	22.13	-3.02
	Laughs	3807.86	3731.43	3680.00	-3.36	-1.38





The Vision of DCS





“To be the leader in the region in producing timely statistical information to achieve the country’s development goals.”

The Mission of DCS

“Making contribution in the socioeconomic development of the country by providing accurate timely statistics, more Effectively by means of new technology, and utilising the services of dedicated staff under a strategic leadership to become a prosperous nation in the globalised environment.”

 Department of Census & Statistics,
Sankyana Mandiraya
No. 306/71, Polduwa
Road, Battaramulla

 info@statistics.gov.lk
 +94 11 2147000
 +94 11 2147011
 statistics.gov.lk

This publication is produced by the Prices and Wages Division
 5th floor, Department of Census and Statistics
 prices@statistics.gov.lk
 +94 11 2147414  +94 11 2877945