



Issue No. 005

Department of Census & Statistics
ISSN 1800 – 1505

Bulletin of Semi Government Sector Employment – 2008

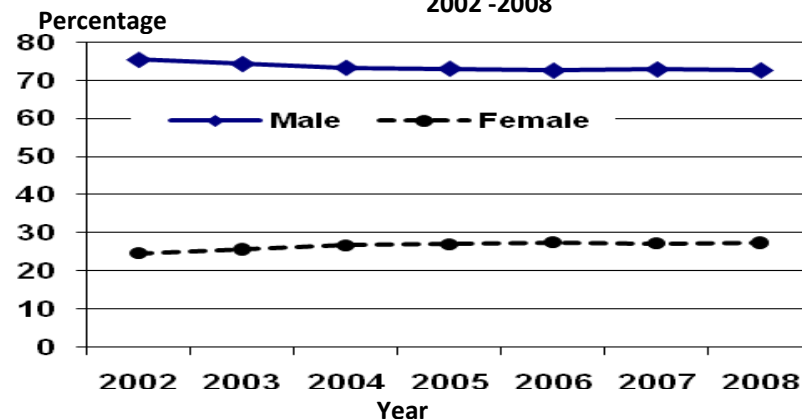
Annual Data Collection of Employment Statistics in Semi.Govt. Sector

Population Census & Demography Division
16/7, Albert Crescent, Colombo 7.
E – Mail : demography@statistics.gov.lk

Table 1: Distribution of Semi Government Sector Employees by Sex
2002 – 2008

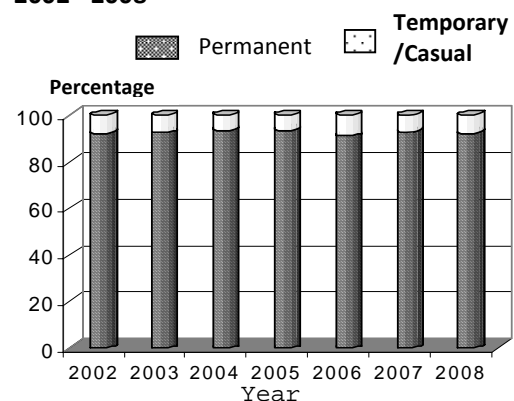
Year	Total	Sex			
		Male		Female	
		No.	%	No.	%
2002	272,111	205,056	75.4	67,055	24.6
2003	243,891	181,099	74.3	62,792	25.7
2004	231,519	169,553	73.2	61,966	26.8
2005	236,457	172,579	73	63,878	27
2006	226,306	164,011	72.5	62,295	27.5
2007	235,441	171,394	72.8	64,047	27.2
2008	235,831	171,058	72.5	64,773	27.5

Figure 1: Percentage Distribution of Semi – Govt. Sector Employees by Sex
2002 -2008



Since semi government sector consists mostly industrial oriented occupations, proportion of female employees was very low.

Figure 2: Percentage Distribution of Semi Govt. Sector employees by Status of Appointment
2002 - 2008



Introduction

- Annual data collection of Semi Government sector employees has long history since 1966, Department of Census and Statistics collects data continuously from the Semi Government Sector institutions.
- Corporations, Boards, Authorities, State Banks and Public Private Companies are included in Semi Government Sector.
- In 2008, there were 258 Semi Government Institutions and out of them 13 were not responded.
- The data are collected through the postal inquiry by filling the questionnaire individually from each institution.
- The list of semi government institutions is updated by using the Census of Public and Semi Government Sector Employment.
- This is the only source that collects data about Field Estate labourers.

Table 2: Distribution of Semi Government Sector Employees by Status of Appointment 2002 – 2008

Year	Status of Appointment							
	Permanent			%	Temporary/Casual			%
	Total	Male	Female		Total	Male	Female	
2002	251,125	189,071	62,054	92.3	20,986	15,985	5,001	7.7
2003	225,671	167,933	57,738	92.5	18,220	13,166	5,054	7.5
2004	215,974	159,661	56,313	93.3	15,545	9,892	5,653	6.7
2005	221,661	162,004	59,657	93.7	14,796	10,575	4,221	6.3
2006	206,222	149,567	56,655	91.1	20,084	14,444	5,640	8.9
2007	218,000	158,808	59,192	92.6	17,441	12,586	4,855	7.4
2008	217,412	158,122	59,290	92.2	18,419	12,936	5,483	7.8

According to figure 2, out of total semi government sector employees 92 % are permanent and 8 % are temporary/casual. Temporary/casual employees are appointed for short term period.

Table 3: Distribution of Semi Government Sector Employees by Major occupational Group, Status of Appointment & Sex - 2008

Major Occupational Group		Status of Appointment								
		Sex			Permanent			Temporary/Casual		
		Total	Male	Female	Total	Male	Female	Total	Male	Female
Total Employees	No	235831	171058	64773	217412	158122	59290	18419	12936	5483
	%	100.0	100.0	100.0	100.0	100.0	100.0	100.0	100.0	100.0
Senior Officials & Managers	No	13909	9611	4298	13424	9180	4244	485	431	54
	%	5.9	5.6	6.6	6.2	5.8	7.2	2.6	3.3	1
Professionals	No	15892	10076	5816	13260	8610	4650	2632	1466	1166
	%	6.7	5.9	9	6.1	5.4	7.9	14.3	11.3	21.3
Technicians & Associate Professionals	No	28546	20145	8401	26389	18732	7657	2157	1413	744
	%	12.1	11.8	13	12.1	11.8	12.9	11.7	10.9	13.6
Clerks & Related Workers	No	64678	32087	32591	62373	31290	31083	2305	797	1508
	%	27.4	18.8	50.3	28.7	19.9	52.4	12.5	6.2	27.5
Services & Sales Workers	No	23512	22605	907	21538	20754	784	1974	1851	123
	%	10	13.2	1.4	9.9	13.1	1.3	10.7	14.3	2.2
Craft & Related Workers	No	13725	13609	116	13148	13034	114	577	575	2
	%	5.8	7.9	0.2	6	8.2	0.2	3.1	4.4	0
Machine Operators & Related Workers	No	21629	21554	75	20582	20514	68	1047	1040	7
	%	9.2	12.6	0.1	9.5	13	0.1	5.8	8.1	0.1
Elementary Occupations	No	53940	41371	12569	46698	36008	10690	7242	5363	1879
	%	22.9	24.2	19.4	21.5	22.8	18	39.3	41.5	34.3

Figure 3: Percentage Distribution of Semi – Government Sector employees by Major Occupational Group - 2008

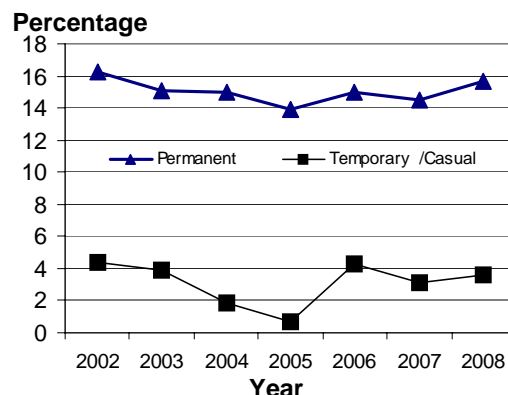


When concerning the percentage distribution of Major Occupational Groups, Clerks and related Workers Group is the highest among both males and females. Since the occupations are male oriented the female distribution in Craft & related Workers and Machine Operators & related Workers groups is very low. It is important to note that out of total female employees more than 50% are Clerks and related Workers.

Figure 4 : Percentage Distribution of Field Estate Labourers by Status of Appointment & Sex 2002- 2008

Table 4 : Distribution of Field Estate Labourers by Status of Appointment & Sex 2002- 2008

Year	Total	Sex				Status of Appointment			
		Male		Female		Permanent		Temporary/Casual	
		No	%	No	%	No	%	No	%
2002	20663	10492	50.8	10171	49.2	16297	78.9	4366	21.1
2003	18934	9418	49.7	9516	50.3	15039	79.4	3895	20.6
2004	16816	7427	44.2	9389	55.8	15008	89.2	1808	10.8
2005	14549	6309	43.4	8240	56.6	13875	89.2	674	4.3
2006	19346	8938	46.2	10408	53.8	15026	77.7	4320	22.3
2007	17597	8350	47.5	9247	52.5	14476	82.3	3121	17.7
2008	19228	8830	45.9	10398	54.1	15663	81.5	3565	18.5



The significant change of Sex & Status of Appointment of Field Estate Labourers cannot be seen from 2002 – 2008. Out of the Permanent Field Estate Labourers, the female employees are higher than that of males.

Table 5: Distribution of Semi - Government Sector Employees by Institution, Major Occupational Group and Sex

Institution	Total Employees	Senior Officials & Managers		Professionals		Technicians & Associate Professionals		Clerks & Related Workers		Services & Sales Workers		Craft & Related Workers		Mechine Operators & Related Workers		Elementary Occipations	
		Male	Female	Male	Female	Male	Female	Male	Female	Male	Female	Male	Female	Male	Female	Male	Female
Total	235,831	9,611	4,298	10,076	5,816	20,145	8,401	32,087	32,591	22,605	907	13,609	116	21,554	75	41,371	12,569
Sri Lanka Transport Board	34,497	560	75	383	31	1,735	219	4,433	936	9,744	2	5,158	0	9,276	1	1,906	38
Sri Lanka Samurdi Authority	25,566	26	5	1	1	1,037	1,196	11,110	12,119	0	0	0	0	34	0	35	2
Ceylon Electricity Board	14,625	76	5	602	95	1,167	198	2,114	1,209	694	8	2,111	0	1,665	0	4,626	55
Sri Lanka Ports Authority	13,658	104	36	170	41	1,502	56	1,459	871	1,912	122	931	0	1,575	0	4,843	36
National Water supply and Drainage Board (NWSDB)	8,947	79	17	1,081	286	154	70	1,275	789	241	22	1,059	3	1,271	7	2,529	64
Janatha Estate Development Board	6,618	49	1	7	64	160	6	51	72	57	5	15	0	42	0	2,564	3,525
Sri Lanka State Plantation Corporation	6,533	34	4	3	10	155	1	50	53	0	57	9	0	42	0	2,568	3,547
Mahaweli Authority of Sri Lanka and Agencies	4,751	151	16	348	89	776	279	272	427	837	17	112	0	455	0	878	94
Road Development Authority	3,964	79	11	588	111	612	211	677	336	23	0	80	0	687	0	530	19
Ceylon Petroleum Storage Terminals Limited	3,397	129	26	63	6	165	15	594	211	760	11	377	0	485	0	543	12
Airport and Aviation Services (Sri Lanka) Ltd.	3,132	50	5	78	15	331	69	140	387	811	129	184	0	206	0	715	12
State Engineering Corporation (SEC)	2,774	10	2	111	40	165	122	122	96	147	0	425	0	191	0	1,333	10
Ceylon Petroleum Corporation	2,686	64	6	80	26	432	34	369	285	474	7	221	0	160	0	493	35
National Livestock Development Board	2,617	59	4	7	1	141	10	62	96	117	49	0	0	113	0	1,635	323
State Timber Corporation	2,499	97	3	26	6	355	61	61	237	352	54	123	2	350	0	581	191
Associated Newspapers of Ceylon Ltd.,	2,371	105	10	82	17	489	135	385	223	100	7	341	0	151	0	322	4
Elkaduwa Plantation	2,315	23	1	7	6	120	3	22	30	0	0	0	0	3	0	921	1,179
National Housing Development Authority (NHDA)	2,226	115	88	49	43	533	246	204	386	221	4	39	0	91	0	204	3
Central Cultural Fund	2,221	15	2	53	16	130	49	50	112	215	14	0	0	72	0	1,062	431
Urban Development Authority (UDA)	1,717	114	61	111	156	104	99	98	278	258	10	19	0	122	0	265	22
Vocational Training Authority	1,565	74	4	3	1	719	437	56	80	1	0	5	1	32	0	135	17
National Youth Services Council	1,528	66	21	14	12	493	198	127	201	28	20	20	0	81	0	236	11
Milk Co (Pvt.) Ltd.	1,446	13	1	120	13	262	28	113	115	60	7	112	0	183	0	411	8
Sri Jayawardeneperu General Hospital	1,424	3	0	83	543	56	130	25	106	21	12	19	5	3	0	225	193
Kurunegala Plantations Ltd.	1,325	33	3	2	1	4	1	105	45	2	0	6	0	33	0	647	443
Central Bank of Sri Lanka	1,304	258	172	51	41	17	3	172	255	143	9	13	0	14	0	152	4
Lanka Electricity Company	1,278	19	1	30	5	630	26	105	63	254	0	0	0	142	0	3	0
Sri Lanka Land Reclamation and Development Corporation (SLLRDC)	1,219	24	12	66	27	82	21	67	85	81	0	171	0	174	0	404	5
Board of Investment of Sri Lanka	1,198	165	78	17	9	99	105	149	178	131	6	9	0	80	0	168	4
Chilaw Plantations Ltd.	1,171	41	3	1	0	0	0	66	44	0	0	0	0	5	0	535	476
Coconut Cultivation Board	1,028	76	7	0	0	233	17	64	138	2	2	0	0	33	0	259	197
National Apprenticeship and Industrial Training Authority	978	20	7	47	23	310	229	63	164	0	0	17	5	31	0	59	3
Sri Lanka Rupavahini Corporation	975	81	13	143	48	359	68	35	96	4	0	2	0	51	0	69	6
Central Engineering Consultancy Bureau	957	37	6	240	90	170	94	33	88	5	0	5	0	100	0	78	11
Sri Lanka Broadcasting Corporation	924	54	40	182	14	188	34	126	56	83	0	90	0	23	0	34	0
Tea Shakthi Fund	901	11	0	16	0	46	0	28	45	0	0	15	0	34	0	233	473
Employees Trust Fund Board	831	29	11	5	14	84	80	284	212	0	0	0	0	39	0	71	2
State Pharmaceutical Corporation of Sri Lanka	821	51	29	92	149	19	30	142	121	0	0	0	0	22	0	151	15
Sri Lanka Bureau of Foreign Employment	810	25	9	2	16	67	75	170	291	0	0	0	0	31	0	76	48
Ceylon Fisheries Corporation	742	43	17	4	2	38	6	59	87	77	19	38	0	91	8	246	7
Ceylon Ceramics Corporation (Brick and Tiles Division)	717	21	0	4	0	11	5	60	41	35	0	0	0	41	0	470	29
Ceylon Fishery Harbours Corporation	714	31	5	15	7	24	10	60	110	187	8	71	0	43	0	136	7
Coconut Research Institute	710	12	1	32	24	74	14	14	16	1	0	13	0	26	0	325	158
Central Environmental Authority	680	57	35	8	3	222	219	11	47	1	5	2	0	30	0	39	1
Maga Neguma Road Construction Equipment Co. Pvt. Ltd.	641	14	0	19	0	36	1	42	26	63	0	106	0	178	0	155	1
State Printing Corporation	638	12	1	1	1	16	1	34	33	65	10	178	3	80	0	184	19
Lanka Mineral Sands Co. Ltd.	638	7	1	10	3	60	9	60	61	47	2	48	0	39	0	283	8
Industrial Development Board	636	133	46	22	4	17	17	63	118	4	4	51	1	41	0	110	5
Youth Corps	557	62	1	0	0	210	162	31	40	0	0	0	0	0	0	44	7
State Development and Construction Corporation	542	12	1	74	23	30	3	48	52	42	0	68	0	101	0	87	1
National Paper Company Ltd.	531	5	1	11	2	51	1	28	28	0	0	2	0	249	14	133	6
National Institute of Education	525	18	9	93	95	25	26	22	115	7	10	0	0	31	0	59	15
National Equipment and Machinery Organization (NEMO)	485	6	0	16	2	27	7	26	53	85	0	10	0	214	0	39	0
Ceylon Fertilizer Co. Ltd.	463	23	0	3	3	31	13	61	37	77	0	16	0	29	0	170	0
Tea Small Holdings Development Authority	449	20	2	3	1	175	9	52	128	3	0	0	0	19	0	35	2
Independent Television Network	445	21	3	56	15	137	16	33	61	19	4	8	0	28	0	40	4
National Aquaculture Development Authority	426	7	1	51	15	60	6	16	40	4	0	0	0	22	0	191	13
Land Reform Commission	422	25	9	1	3	65	21	96	141	0	0	1	0	19	0	32	9
Sri Lanka Institute of Advanced Technical Education	402	6	3	95	94	18	8	13	62	6	7	3	0	14	0	57	16
Agricultural and Agrarian Insurance Board	390	35	5	1	0	113	5	30	133	0	0	0	0	26	0	38	4
Sri Lanka Handicraft Board	374	22	47	0	0	20	106	7	45	13	43	9	0	15	0	40	7
Rubber Research Institute of Sri Lanka(Board)	368	9	5	19	15	90	24	7	41	37	0	22	0	24	0	63	12
Cey-Nor Foundation Ltd.	346	13	1	3	1	20	3	25	15	11	1	29	0	180	29	14	1
National Institute of Technical Education	314	11	3	2	7	71	176	2	8	1	1	7	0	5	0	19	1
Sri Lanka Cashew Corporation	314	10	0	5	0	62	6	22	30	1	2	0	0	30	0	64	82

Table 5: Distribution of Semi - Government Sector Employees by Institution, Major Occupational Group and Sex

Institution	Total Employees	Senior Officials & Managers		Professionals		Technicians & Associate Professionals		Clerks & Related Workers		Services & Sales Workers		Craft & Related Workers		Mechine Operators & Related Workers		Elementary Occipations	
		Male	Female	Male	Female	Male	Female	Male	Female	Male	Female	Male	Female	Male	Female	Male	Female
National Engineering, Research and Development Centre (NERD)	312	4	0	24	14	25	14	9	37	0	0	166	0	7	0	12	0
Lanka Phosphate Ltd.	312	5	0	4	0	19	0	20	11	28	0	25	0	33	0	165	2
National Aquatic Resources Research and Development Agency	302	2	1	4	4	102	49	17	28	5	0	13	0	24	0	50	3
Sri Lanka Standards Institute	295	22	19	28	41	39	21	19	50	0	0	9	0	11	0	36	0
Lanka Salusala Limited	291	8	5	3	1	0	9	63	72	26	21	3	40	8	0	28	4
Housing Development and Finance Corporation (HDFC)	287	12	4	33	42	12	4	49	95	1	0	1	0	14	0	17	3
National Lotteries Board	286	29	5	3	0	1	0	35	80	50	15	0	0	45	0	23	0
Sri Lanka Export Development Board	285	38	35	11	34	9	17	6	58	0	0	3	0	27	0	46	1
Sri Lanka Southern Development Authority	283	72	27	3	0	20	8	23	50	0	0	0	0	49	0	28	3
Sri Lanka Tea Board	264	19	3	5	1	61	15	25	58	0	2	0	0	16	0	58	1
Institute of Construction, Training and Development (ICTAD)	262	9	8	17	2	11	7	26	43	35	0	28	0	39	0	37	0
Sugathadasa National Sports Complex Authority	258	6	5	0	0	4	2	11	15	78	12	9	0	7	0	88	21
National Transport Medical Institute	248	1	1	48	25	14	3	19	62	1	8	2	0	2	0	45	17
Ceylon-German Technical Training Institute & Vocational Education Insti	248	11	0	25	3	128	9	11	19	3	0	8	0	7	0	22	2
Sri Lanka Tea Research Institute	245	3	1	12	3	105	29	18	18	8	0	8	0	35	0	5	0
Sri Lanka Ayurvedic Drugs Corporation	243	8	1	1	4	14	4	27	35	15	1	1	0	15	0	76	41
Water Resources Board	242	8	0	7	6	33	4	15	14	19	2	37	0	21	0	76	0
Human Rights Commission of Sri Lanka	234	6	6	14	24	40	22	9	58	0	0	0	0	15	0	40	0
Geological Survey and Mines Bureau	234	21	7	22	5	22	8	44	51	4	0	0	0	24	0	26	0
Common Amenities Board (Condominium Management Authority)	229	6	3	14	2	0	1	16	18	17	0	12	0	10	0	116	14
Co-operative Wholesale Establishment	227	7	0	2	0	0	0	7	11	35	12	4	0	0	0	97	52
Lanka General Trading Company	216	29	5	0	1	3	7	29	50	32	11	6	0	6	1	34	2
Development Lotteries Board	214	19	6	5	0	5	0	24	60	0	0	0	0	44	0	56	0
National Gem and Jewellery Authority	203	12	2	5	5	22	4	34	69	3	0	2	0	15	0	28	2
Palmyrah Development Board	202	3	1	1	0	20	50	10	28	20	10	0	0	8	0	41	10
Kotalawala Defence Academy	197	1	0	10	6	5	1	10	25	49	0	9	0	2	0	76	3
University Grants Commission	195	8	5	6	7	27	25	17	55	1	0	3	0	12	0	26	3
National Film Corporation	192	5	1	4	2	20	12	43	43	1	0	2	0	20	0	39	0
National Institute of Fisheries and Nautical Engineering	192	8	0	3	2	51	14	21	25	1	3	0	0	19	0	41	4
State Pharmaceutical Manufacturing Corporation of Sri Lanka	190	7	2	4	6	34	16	11	15	0	0	51	19	10	0	15	0
Telecommunications Regulatory Commission of Sri Lanka	186	24	10	1	3	15	4	18	34	0	0	13	25	20	0	17	2
National Building Research Organization (NBRO)	186	1	0	29	23	16	11	13	27	1	0	56	0	0	0	9	0
Sri Lanka Sugar Cane Research Institute	186	7	0	12	9	16	5	7	10	12	0	8	0	18	0	81	1
Coconut Development Authority	185	10	3	1	0	51	21	18	40					14	0	25	2
LTL Holdings Pvt. Ltd.	174	15	1	17	1	13	3	5	11	3	0	38	0	10	0	57	0
Consumer Affairs Authority	170	10	9	0	3	73	21	6	24					12	0	11	1
Sri Lanka Tourism dev.Authority	163	29	6	3	2	0	1	25	30	28	0	1	0	9	0	28	1
BMICH	160	5	1	1	1	26	5	9	9			48	0	5	0	44	6
Hector Kobbekaduwa Agrarian Research and Training Institute	159	2	1	8	5	37	15	11	39	2	0	1	2	15	0	21	0
Institute of Indigenous Medicine	157	3	2	27	39	11	15	11	22	3	0	2	0	2	0	19	1
Ceylon Shipping Corporation Ltd.	148	26	9	7	2	1	7	31	40	0	0	1	0	13	0	10	1
National Library and Documentation Board	146	3	2	4	9	2	3	25	55			4	1	7	0	22	9
Social Security Board	144	36	27	0	0	0	3	7	26	0	0	0	0	9	3	23	10
National Transport Commission	139	8	2	5	5	13	33	15	43	0	0	0	0	8	0	7	0
Lakdiva Engineering Co. Limited	139	2	0	3	1	16	1	16	13	1	0	49	2	4	0	30	1
Mahaweli Livestock Enterprises Ltd.,	137	3	1	1	0	3	1	17	8	3	1	8	0	9	0	45	37
Superior Courts Complex	136	5	0	1	0	7	1	17	0	50	6	18	0	6	0	23	2
Thondaman Memorial Foundation	133	18	0	0	0	8	8	33	42	1	1			10	0	11	1
National Dangerous Drugs Control Board	130	8	0	0	1	24	14	32	28	0	0	0	0	12	0	11	0
National Institute of Business Management	125	6	1	0	2	21	22	14	32	0	0	3	0	6	0	18	0
Maga Neguma Emulsion Production Company Pvt. Ltd.	125	10	0	0	0	2	2	5	14	7	0	27	0	39	0	18	1
Mahaweli Livestock and Agro Enterprises (Pvt) Ltd.,	118	9	0	0	0	1	0	6	9	10	6	0	0	7	0	43	27
Wijaya Kumaratunga Memorial Hospital	117	0	0	22	39	5	1	1	4	2	1	0	0	2	0	19	21
Civil Aviation Authority	117	29	15	1	0	0	0	22	24	0	0	0	0	10	0	16	0
National Science Foundation	113	2	1	8	29	1	4	6	35	0	0	7	2	7	0	11	0
Sri Lanka Institute of Development Administration	111	4	1	14	6	5	7	5	38	0	0	0	0	8	0	21	2
Building Materials Corporation (BMC)	110	4	7	0	0	0	0	36	17	13	0	0	0	3	0	30	0
Sri Lanka Foundation	109	4	3	3	6	14	0	2	22	10	0	9	0	9	0	26	1
Colombo Commercial Fertilizer Company	109	6	0	4	0	10	5	26	24	3	0	4	0	6	0	21	0
Sri Lanka Institute of Tourism and Hotel Management	106	7	7	0	0	35	4	9	17	0	13	3	0	4	0	7	0
B.C.C. Lanka Ltd.	102	3	0	4	0	0	2	19	7	0	0	0	0	5	0	62	0
State Banks	24,153	4,758	2,896	202	231	1,565	1,272	3,490	5,583	2,408	27	41	0	362	0	1,301	17
Universities	13,554	125	78	3,565	2,538	1,067	708	709	1,253	771	60	381	5	297	2	1,756	239
Other	4,130	386	70	308	235	437	318	353	654	281	5	115	0	384	10	509	65

The list of semi - government sector consists of 258 institutions. 13 Institutions were not responded. 'Other' includes institutions of less than 100 employees.