



Bulletin of Semi Government Sector Employment - 2004

Demography & Social Statistics Division

E-Mail : demography@statistics.gov.lk

Issue No 001

Department of Census & Statistics

ISSN 1800 - 1505

Table 1: Distribution of Semi - Government Sector Employees by Status of Appointment & Sex, 1988 - 2004

Year	Total			Status of Appointment & sex					
	Total	Male	Female	Permanent			Temporary/Casual		
				Total	Male	Female	Total	Male	Female
1988	419,334	294,162	125,172	383,426	274,130	109,296	35,908	20,032	15,876
1989	378,820	283,242	95,578	354,089	267,360	86,729	24,731	15,882	8,849
1990	629,248	387,116	242,132	583,145	359,017	224,128	46,103	28,099	18,004
1991	616,023	362,363	253,660	563,746	331,908	231,838	52,277	30,455	21,822
1992	465,829	281,571	184,258	434,362	260,978	173,384	31,467	20,593	10,874
1993	541,263	337,090	204,173	501,906	310,651	191,255	39,357	26,439	12,918
1994	542,606	340,681	201,925	491,183	306,707	184,476	51,423	33,974	17,449
1995	502,616	319,672	182,944	442,986	280,965	162,021	59,630	38,707	20,923
1996	363,642	255,102	108,540	318,046	221,606	96,440	45,596	33,496	12,100
1997	355,799	250,026	105,773	313,657	219,204	94,453	42,142	30,822	11,320
1998	367,563	256,899	110,664	328,985	229,341	99,644	38,578	27,558	11,020
1999	373,357	260,325	113,032	328,706	226,696	102,010	44,651	33,629	11,022
2000	383,498	266,832	116,666	334,608	231,985	102,623	48,890	34,847	14,043
2001	370,350	256,692	113,658	330,549	227,871	102,678	39,801	28,821	10,980
2002	272,111	205,056	67,055	251,125	189,071	62,054	20,986	15,985	5,001
2003	243,891	181,099	62,792	225,671	167,933	57,738	18,220	13,166	5,054
2004	231,519	169,553	61,966	215,974	159,661	56,313	15,545	9,892	5,653

Introduction

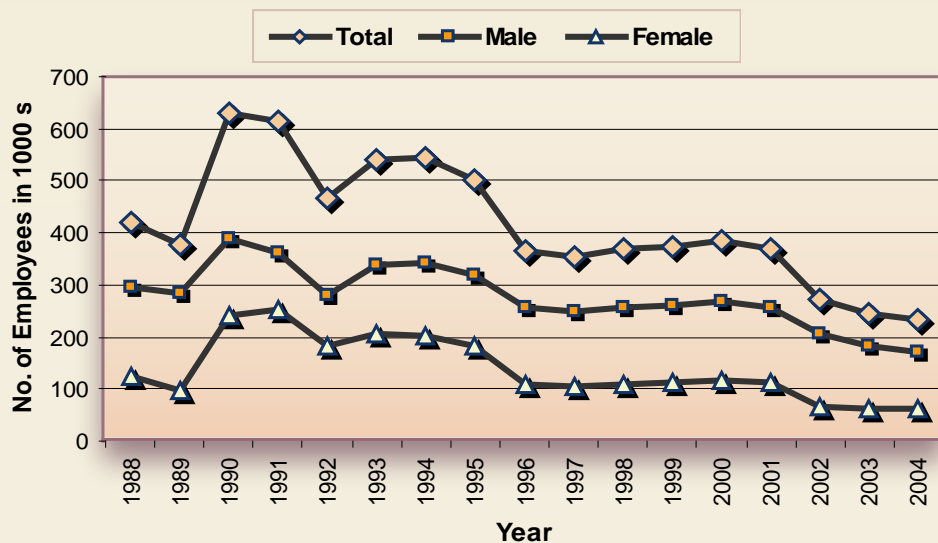
Annual data collection of Employment Statistics in Semi-Government Sector was started in 1966 by the Department of Census & Statistics. Corporations, Boards, Authorities, Institutions of Government Owned Business Undertaking were included in semi government sector. At the beginning data was collected on status of appointment basis. After 1988 it was collected on sex wise too.

In 1980, Department of Census and Statistics carried out the Census in both sectors, namely Public & Corporation Sector Employment for the first time. Next census was done in 1985 but annual collection of employment statistics in corporation sector was done continuously.

Even though demographic characteristics of the employees are collected through the employment census once in the four years, information of field labourers in State owned Estates are not included. Annual data collection of employment statistics in corporation sector is only the source collected data about Field Labourers in Estate Sector.

It is important to note that data has been collected annually as at 31st December. In Year 2004, the frame consists of 338 Institutions. The frame was updated by using frame of Census of Public and Semi-Government Sector Employment-2002.

Figure 1 : Distribution of Semi - Government Sector Employees by Sex, 1988 - 2004

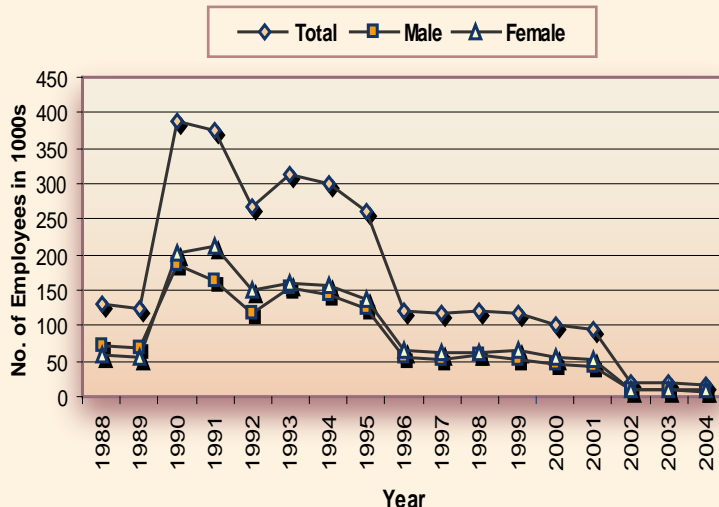


- Proportion of male employees were much higher than that of female employees since semi government consists mostly industrial oriented occupations.
- Highest number of semi government sector employees was reported in 1990. Then onwards it was decreasing.
- The fast growth of number of employees in 1989 to 1990 was due to an under coverage of Estate Labourers in 1989 and before due to under reporting.

Table 2 : Distribution of Estate Labourers by Status of Appointment & Sex 1988 - 2004

Year	Total			Status of Appointment					
				Permanent			Temporary/Casual		
	Total	Male	Female	Total	Male	Female	Total	Male	Female
1988	129,034	70,118	58,916	113,809	62,908	50,901	15,225	7,210	8,015
1989	124,830	68,015	56,815	111,588	61,806	49,782	13,242	6,209	7,033
1990	387,308	186,390	200,918	352,517	167,617	184,900	34,791	18,773	16,018
1991	375,734	162,770	212,964	339,946	146,021	193,925	35,788	16,749	19,039
1992	266,335	117,849	148,486	250,758	110,289	140,469	15,577	7,560	8,017
1993	313,076	152,718	160,358	290,670	140,329	150,341	22,406	12,389	10,017
1994	300,779	143,468	157,311	278,568	132,499	146,069	22,211	10,969	11,242
1995	260,969	123,702	137,267	234,328	110,572	123,756	26,641	13,130	13,511
1996	122,053	55,294	66,759	105,705	46,850	58,855	16,348	8,444	7,904
1997	116,873	53,603	63,270	101,854	46,079	55,775	15,019	7,524	7,495
1998	120,090	57,419	62,671	103,707	48,038	55,669	16,383	9,381	7,002
1999	116,180	51,702	64,478	100,057	43,177	56,880	16,123	8,525	7,598
2000	102,110	45,967	56,143	85,864	38,117	47,747	16,246	7,850	8,396
2001	93,884	41,710	52,174	80,405	35,155	45,250	13,479	6,555	6,924
2002	20,663	10,492	10,171	16,297	7,267	9,030	4,366	3,225	1,141
2003	18,934	9,418	9,516	15,039	6,671	8,368	3,895	2,747	1,148
2004	16,816	7,427	9,389	15,008	6,636	8,372	1,808	791	1,017

Figure 2 : Distribution of Estate Labourers by Sex 1988 - 2004

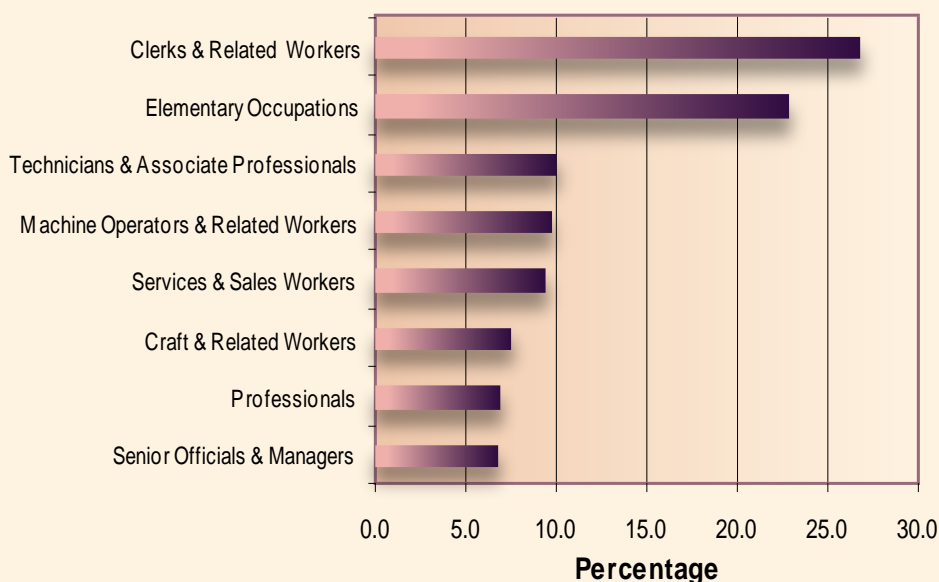


- Distribution of Estate Labourers in state owned estates (figure 2) shows the same distribution pattern as shown in figure 1.
- The decline in number of employees was mainly due to privatization of state owned estates.

Table 3 : Distribution of Semi – Government Sector Employees by Major Occupational Group , Status of Appointment & Sex - 2004

Major Occupational Group	Total			Status of Appointment & Sex					
				Permanent			Casual		
	T	M	F	T	M	F	T	M	F
Total	231519	169553	61966	215974	159661	56313	15545	9892	5653
Senior Officials & Managers	15646	11285	4361	15215	10927	4288	431	358	73
Professionals	15958	10654	5304	13625	9311	4314	2333	1343	990
Technicians & Associate Professionals	23154	17115	6039	22275	16456	5819	879	659	220
Clerks & Related Workers	61969	30999	30970	60347	30422	29925	1622	577	1045
Services & Sales Workers	21768	20762	1006	20396	19490	906	1372	1272	100
Craft & Related Workers	17410	16658	752	16704	15972	732	706	686	20
Machine Operators & Related Workers	22698	22616	82	21634	21586	48	1064	1030	34
Elementary Occupations	52916	39464	13452	45778	35497	10281	7138	3967	3171

Figure 3 : Percentage distribution of Semi – Government Sector Employees by Major Occupational Group - 2004



- The highest percentage of employees (27%) has been reported in 'Clerks and Related Workers' category.
- Skilled labourer and Unskilled labourer categories such as Craft and Related Workers, Machine Operators and Elementary Occupations has achieved 40% of total employees.

Table 4 : Distribution of Semi - Government Sector Employees by Institution, Major Occupational Group and Sex.

Institution	Total Employees	Major Occupational Group & Sex															
		Senior Officials & Managers		Professionals		Technicians & Associate Professionals		Clerks & Related Workers		Services & Sales Workers		Craft & Related Workers		Machine Operators & Related Workers		Elementary Occupations	
		M	F	M	F	M	F	M	F	M	F	M	F	M	F	M	F
	231,519	11,285	4,361	10,654	5,304	17,115	6,039	30,999	30,970	20,762	1,006	16,658	752	22,616	82	39,464	13,452
Sri Lanka Central Transport Board	41306	1,361	190	770	174	2,576	532	6,135	1,655	9,670	32	5,426	3	9,726	0	2,890	166
Samurdhi Authority of Sri Lanka	25171	25	5	1	3	896	1,098	11,493	11,577	0	0	0	0	46	0	27	0
Ceylon Electricity Board	13443	71	5	561	75	967	61	917	991	660	5	615	0	3,793	0	4,707	15
Sri Lanka Ports Authority	13314	86	23	288	35	1,101	147	1,353	664	1,667	135	1,231	25	2,485	1	3,960	113
Janatha Estates Development Board	8794	65	1	15	9	188	12	83	89	81	13	11	0	67	0	3,654	4,506
State Plantations Corporation	7902	43	5	14	24	179	3	67	84	1	55	2	0	62	0	3,157	4,206
National Water Supply and Drainage Board	7736	62	10	974	248	42	65	819	604	301	0	1,742	8	503	0	2,341	17
Sri Lanka Telecom	7165	181	64	242	56	945	265	561	1,447	217	25	2,431	38	307	0	386	0
Sri Lanka Mahaweli Authority	4801	165	12	310	65	769	212	254	420	819	49	133	0	384	0	1,091	118
State Timber Corporation	2995	102	2	31	6	401	37	73	214	370	72	67	0	325	0	982	313
Associated Newspapers of Ceylon Ltd	2992	105	7	102	16	718	179	475	225	57	1	91	0	140	0	876	0
Airport & Aviation Services Sri Lanka Ltd	2908	60	8	86	12	309	45	139	314	722	95	163	0	185	0	756	14
National Housing Development Authority (Rural Housing)	2766	210	94	116	42	623	267	253	446	278	3	47	0	107	0	265	15
Central Cultural Fund	2725	12	2	53	33	108	44	32	52	217	32	1,139	491	51	0	248	211
National Livestock Development Board	2519	70	6	9	1	137	12	60	80	7	0	0	0	123	0	332	1,682
Ceylon Petroleum Corporation	2452	151	12	80	10	444	70	183	209	585	6	167	0	33	1	470	31
Road Development Authority	2304	58	6	326	55	470	155	206	274	17	0	18	0	418	0	297	4
State Engineering Corporation	2178	5	0	85	11	139	65	120	65	179	0	407	0	52	0	1,042	8
Sri Jayawardeneperu General Hospital	1563	4	0	139	552	57	143	86	59	3	29	19	5	10	0	241	216
Vocational Training Authority	1454	68	3	512	427	71	56	42	78	2	0	0	0	28	0	144	23
Sri Lanka Land Reclamation and Development Corporation	1432	30	8	60	28	99	17	73	106	84	3	204	0	178	0	538	4
Lanka Electricity Company	1291	17	2	30	5	20	8	70	108	259	0	626	0	146	0	0	0
Milco (private) Ltd	1273	15	1	99	8	237	15	80	83	35	6	177	0	86	0	420	11
Central Bank of Sri Lanka	1156	172	81	67	34	51	35	165	243	183	8	2	0	11	0	104	0
Sri Lanka Broad Casting Corporation	1136	59	4	175	91	213	39	52	129	107	0	112	0	30	0	119	6
Board of Investment of Sri Lanka	1124	141	67	12	11	169	77	84	187	107	6	11	0	77	0	173	2
National Paper Company Ltd	1050	7	1	21	4	80	7	77	72	37	0	138	17	223	5	346	15
Coconut Cultivation Board	930	67	8	22	9	140	2	80	139	2	2	1	0	39	0	256	163
Sri Lanka Rupavahini Corporation	854	62	11	107	27	233	27	50	108	44	43	21	0	52	0	63	6
Ceylon Ceramics Corporation	843	3	0	3	0	82	7	14	40	42	0	0	0	23	0	591	38
Co-operative Wholesale Establishment	766	14	1	0	0	7	0	11	19	53	29	1	0	12	0	322	297
State Pharmaceutical Corporation of Sri Lanka	754	39	27	74	133	10	27	116	147	25	4	0	0	25	0	116	11
Employee's Trust Fund	710	24	5	2	12	21	14	208	351	0	0	7	0	0	0	57	9
Coconut Research Institute	699	8	1	20	15	83	17	19	22	2	0	9	0	29	0	300	174
Foreign Employment Bureau	675	33	10	10	13	40	42	125	258	0	4	0	0	40	0	58	42
Ceylon Fisheries Corporation	662	40	8	4	6	64	0	44	102	97	21	37	0	64	0	164	11
National Apprenticeship and Industrial Authority	646	32	15	111	18	114	56	50	149	0	0	19	5	29	0	48	0
State Development and Construction Corporation	623	8	0	84	14	39	12	65	58	45	1	89	0	77	0	130	1
National Equipment and Machinery Organization	619	12	2	30	1	41	5	29	56	89	0	77	0	247	0	30	0
Central Engineering Consultancy Bureau	619	14	0	149	37	95	29	55	98	0	0	12	0	83	0	47	0
Industrial Development Board	605	120	35	24	9	4	6	100	90	7	0	53	0	50	0	103	4
Ceylon Fishery Harbours Corporation	595	20	2	85	7	6	6	38	87	195	5	77	0	36	0	30	1
Central Environmental Authority	577	47	20	2	4	207	180	9	44	0	2	2	0	25	0	35	0
State Printing Corporation	557	11	0	2	1	23	2	49	32	65	7	203	3	68	0	85	6
Ceylon Hotels Corporation	512	15	2	22	0	18	6	111	23	250	2	8	0	9	0	46	0
Rubber Research Institute of Sri Lanka	503	5	0	19	8	31	0	3	36	11	0	8	0	18	0	200	164
Lanka Mineral Sands Company Ltd.	490	13	1	10	3	53	3	42	38	44	0	38	0	31	0	201	13
Sri Lanka Handicrafts Board	476	26	71	0	2	5	12	6	37	37	196	10	0	16	0	49	9
Tea Small Holder Development Authority	471	19	1	9	3	184	9	63	127	3	0	0	0	15	0	36	2
National Institute of Education	467	16	2	5	0	112	74	22	108	8	9	0	0	29	0	62	20
B. C. C Lanka Ltd	463	21	10	4	0	22	3	15	34	31	0	28	0	59	1	155	80
Land Reform Commission	386	26	14	2	2	49	20	51	152	0	0	1	0	16	0	49	4

Cntd.

Table 4 : Distribution of Semi - Government Sector Employees by Institution, Major Occupational Group and Sex.

Institution	Total Employees	Major Occupational Group & Sex															
		Senior Officials & Managers		Professionals		Technicians & Associate Professionals		Clerks & Related Workers		Services & Sales Workers		Craft & Related Workers		Machine Operators & Related Workers		Elementary Occupations	
		M	F	M	F	M	F	M	F	M	F	M	F	M	F	M	F
Agricultural and Agrarian Insurance Board	376	36	3	1	0	119	3	33	113	0	0	0	0	29	0	37	2
Cey- Nor Foundation Ltd	360	15	1	2	1	31	3	11	20	11	1	27	0	178	35	24	0
Building Materials Corporation	359	35	13	0	0	0	0	97	90	39	2	5	0	15	0	63	0
Sri Lanka Cashew Corporation	351	17	0	3	0	80	10	20	27	2	0	0	0	19	0	73	100
Ceylon Fertilizer Co. Ltd.	348	39	1	0	0	0	2	165	110	0	0	20	0	11	0	0	0
Lanka Salusala Limited	344	11	5	1	0	1	1	63	62	40	18	6	78	5	0	45	8
National Engineering, Research and Development Centre	340	3	0	34	9	21	16	14	34	0	0	0	0	12	0	197	0
Independence Television Network Ltd	336	15	3	45	19	99	12	20	34	1	0	21	0	27	0	38	2
Industrial Technology Institute	323	10	8	29	20	51	70	10	38	0	0	33	0	17	0	33	4
Lanka Phosphate Limited	305	6	0	6	0	13	0	22	9	30	0	24	0	23	0	172	0
Water Resource Board	305	10	0	19	7	39	8	18	19	16	0	14	0	40	0	115	0
Institute for Construction Training and Development	301	15	8	25	2	11	9	25	51	37	0	21	0	53	0	44	0
National Aquatic Resources Research and Development Agency	299	1	1	9	5	107	34	17	21	3	0	14	0	26	0	55	6
National Aquaculture Development Authority of Sri Lanka	297	7	0	16	7	49	4	13	31	1	0	0	0	21	0	139	9
Sri Lanka Standard Institute	295	23	14	33	25	38	21	27	57	0	0	14	0	10	0	33	0
Sri Lanka Export Development Board	290	44	40	7	13	14	22	8	66	0	0	5	0	25	0	45	1
Housing Development Finance Corporation of Sri Lanka	276	11	4	33	50	12	4	41	90	0	0	1	0	9	0	17	4
Lanka General Trading Company	271	22	3	1	1	3	4	50	65	29	9	7	0	10	0	63	4
Sri Lanka Tourist Board	267	30	9	24	5	0	0	44	61	29	0	3	0	9	0	51	2
Southern Development Authority	255	60	22	5	0	7	0	18	55	0	0	0	0	53	0	33	2
Tea Research Institute of Sri Lanka	250	5	0	58	22	39	13	25	24	7	0	23	0	34	0	0	0
National Lotteries Board	250	15	3	13	0	2	9	32	72	35	4	2	0	42	0	21	0
Sri Lanka Tea Board	248	23	5	5	2	44	6	29	60	0	3	0	0	16	0	55	0
Common Amenities Board	244	7	3	17	2	0	1	15	18	18	1	14	0	7	0	127	14
Ayurvedic Drugs Corporation	243	16	1	4	7	12	2	23	32	17	2	0	0	13	0	63	51
Sir Jone Kotalawala Defence Academy	217	2	1	14	6	5	0	11	32	57	0	8	0	2	0	76	3
Sri Lanka Sugar Cane Research Institute	209	5	0	14	3	31	4	9	7	1	0	12	0	18	0	104	1
National Gem and Jewellery Authority	207	27	1	4	3	22	8	30	54	4	0	4	0	16	0	34	0
National Film Corporation	207	11	5	2	2	10	5	58	44	4	0	2	0	16	0	47	1
Hector Kobbekaduwa Agrarian Research and Training Institute	204	2	1	36	15	49	9	15	32	1	0	2	2	13	0	26	1
National Building Research Organization (Subsidiary of ICTAD)	195	4	1	27	25	25	13	6	25	3	0	4	0	11	0	51	0
Palmyrah Development Board	185	6	0	5	42	17	0	24	18	18	9	0	0	5	0	24	17
University Grants Commission	169	8	8	3	5	18	38	12	31	2	0	2	0	10	0	29	3
National Institute of Fisheries and Nautical Engineering	166	8	0	21	10	36	1	22	27	0	0	0	0	14	0	25	2
Telecommunication Regulatory Commission of Sri Lanka	160	26	12	1	3	15	5	23	34	0	0	1	0	20	0	19	1
State Pharmaceutical Manufacturing Corporation of Sri Lanka	152	7	1	3	6	19	13	3	10	0	0	46	24	9	0	11	0
Coconut Development Authority	151	7	6	2	0	26	11	20	36	0	0	0	0	14	0	27	2
National Library and Documentation Services Board	144	5	0	3	9	4	3	27	47	0	0	4	1	7	0	23	11
Mahaveli Livestock Enterprises Ltd	142	9	2	0	0	0	0	31	16	0	0	0	0	0	0	0	84
Institute of Indigenous Medicine (Ayurveda)	140	3	0	16	36	14	5	7	20	0	0	5	0	3	0	14	17
Sri Lanka Cement Corporation	134	1	0	10	1	6	0	18	15	16	0	41	0	7	0	19	0
Human Rights Commission of Sri Lanka	133	7	4	18	22	1	1	6	39	0	0	0	0	6	0	29	0
Geological survey and Mines Bureau	133	6	0	24	7	12	2	10	29	0	0	0	0	21	0	22	0
Office of the Marshal	130	5	0	0	0	7	0	6	17	48	7	15	0	6	0	17	2
Ceylon Shipping Corporation Ltd	127	18	5	12	3	13	18	16	28	0	0	1	0	3	0	9	1
Upperwatershed Management Project	119	7	1	34	35	2	0	4	19	0	0	0	0	10	0	7	0
Sri Lanka Foundation	116	4	1	6	6	10	3	2	20	22	0	0	0	10	0	31	1
North Sea Limited	105	1	0	1	0	5	0	3	2	0	0	0	0	50	35	8	0
Sri Lanka Libiya Agriculture and Livestock Development Company	104	6	0	2	0	10	1	4	3	2	3	2	0	10	0	32	29
National Science Foundation in Sri Lanka	104	3	4	9	11	4	6	7	33	0	0	6	2	7	0	12	0
State Banks	22541	6,106	3,128	172	142	741	662	3,432	4,192	1,961	16	47	1	303	0	1,623	15
Universities	12835	108	41	3,392	2,090	1,078	506	722	1,262	468	27	457	11	270	3	2,196	204
Other	4305	367	127	455	266	451	246	304	789	125	4	65	38	363	1	607	97

Frame consists of 338 Institutions. Six Institutions were not responded.
'Other' includes Institutions of less than 100 Employees.