



# Colombo Consumer Price Index (CCPI)-(BASE 2021=100)

## May 2024

31-05-2024

Department of Census and Statistics

Ministry of Finance, Economic Stabilization and National policies

The Department of Census and Statistics (DCS) is the authorized agency to compile Colombo Consumer Price Index (CCPI). Following internationally accepted guidelines, it has been arranged to revise the base year from 2013=100 to 2021=100 in order to accommodate the changing expenditure patterns and in cooperate changes of goods & services available in the market. Accordingly, with respect to the new base, CCPI (Base 2021=100) will be released monthly commencing from February 2023 on the last working day of each month. It is emphasized that index numbers or inflation figures compiled under different base years cannot be compared.

The CCPI is compiled to indicate average changes in the prices of goods and services purchased by households in urban areas of Colombo district. The price collection of the index (Base 2021=100) has covered 10 price collection centers in Peliyagoda, Maradana, Wellawatta, Dematagoda Grandpass, Kirulapone, Nugegoda, Rathmalana, and two Dedicated Economic Centers namely Narahenpita and Rathmalana.

Prices are collected weekly from the outlets located within each of the above market areas including Sathosa and a supermarket. The consumer basket includes 426 items, which represent the typical urban household consumption expenditure. The CPI weights are derived from the Household Income and Expenditure Survey (HIES) 2019.

- ▮ The CCPI for all items for the month of May 2024 was 194.1 and it records a decrease of 1.1 index points compared to April 2024, for which the index was 195.2.
- ▮ The overall rate of inflation as measured by CCPI on Y-on-Y basis is 0.9% in May 2024

### Content

01. Variations in Colombo Consumer Price Index (Page 1)
02. Inflation:(Page 5)

[Source Publication](#) For more details on the revision of base year, please click here: [Technical Note on Base Year Revision](#)

statistics.gov.lk

## 1. Variations in Colombo Consumer Price Index

Month on month changes in the Colombo Consumer Price Index is briefly described below.

Table 1- Monthly Changes by main Groups of Market Basket

Major Group*	Index Number			Monthly Changes of the Expenditure Values (Rs.)			Monthly Changes of the Index (%) <sup>1</sup>		
	May	Apr.	May	May	Apr.	May	May	Apr.	May
	2023	2024	2024	2023	2024	2024	2023	2024	2024
All Items	192.3	195.2	194.1	-43.05	-1422.61	-1014.65	-0.02	-0.79	-0.57
Food and Non Alcoholic Beverages	232.7	235.4	232.6	943.11	-578.68	-662.24	0.53	-0.32	-0.37
Non Food	177.9	180.9	180.3	-986.16	-843.92	-352.41	-0.56	-0.47	-0.20
Alcoholic beverages Tobacco and Narcotic	179.5	242.3	237.5	-39.24	80.37	-74.29	-0.02	0.04	-0.04
Clothing and Footwear	239.7	242.1	243.3	-8.93	84.96	24.59	-0.01	0.05	0.01
Housing, Water, Electricity, Gas and Other Fuels	155.1	146.5	145.6	-299.90	-1159.63	-259.53	-0.17	-0.64	-0.14
Health	174.4	172.7	173.1	0.00	11.14	15.27	0.00	0.01	0.01
Transport	225.0	240.3	239.4	-439.98	89.01	-101.26	-0.25	0.05	-0.06
Miscellaneous Goods and Services	183.6	188.4	189.7	2.69	-6.37	38.38	0.00	0.00	0.02
Other	177.1	186.9	186.9	-200.80	56.59	4.43	-0.11	0.03	0.00

Note 1: There are 12 main groups of the market basket. Significant changes in May 2024 were noted in seven main groups, details on which are given in Table 2.

Note 2: Monthly change of the index (%) is calculated using expenditure values.

Note 3:<sup>1</sup> Percentage of items does not tally with overall percentage due to rounding off.

### 1.1 Month on Month (M on M) Change of CCPI:

The CCPI for all items for the month of May 2024 was 194.1 and it records a decrease of 1.1 index points or 0.57 percentage compared to the month of April 2024 for which the index was 195.2. This represents a decrease in expenditure value by Rs 1014.65 in the "Market Basket".

#### 1.1.1 Contribution to M on M Changes:

Contributions to the change in CCPI from April 2024 to May 2024 are given in Table 02. The month-on-month change was contributed by a decrease in Food items by 0.37% and Non Food items by 0.20% respectively.

#### 1.1.2 Contribution of Food and Non-Alcoholic Beverages items: -0.37%

As shown in table 02, decreases in value change were reported for Big Onions (0.37%), Fresh fruits (0.26%), Vegetables (0.13%), Chicken (0.10%), Milk powder (0.04%), Potatoes (0.03%), Green Chillies (0.02%), Dried Chillies (0.02%), Chili Powder (0.02%), Canned Fish (0.02%), Gram (0.01%), Noodles (0.01%), Egg (0.01%), Coconut oil (0.01%) and Pepper (0.01%).

While increases in value change were reported for Fresh Fish (0.36%), Lime (0.23%), Ginger (0.06%), Tea dust/leaves (0.03%), Rice (0.02%), Red onion (0.02%) and Vegetable oil (0.01%).

## 1.1.3 Contribution of Non-Food items: -0.20%

Among Non-Food groups, decrease in value change was reported for the group of 'Housing, Water, Electricity, Gas and Other Fuels' (0.14%), 'Transport' (0.06%) and 'Alcoholic beverages Tobacco and Narcotics' (0.04%).

While increases in value change were reported for the groups of 'Miscellaneous Goods and Services' (0.02%), 'Clothing and Footwear' (0.01%) and Health (0.01%). Further, very slight price increase was reported in group of 'Restaurant and Hotels' and very slight price decrease was reported in group of 'Furnishing Household Equipment and Routine Household Maintenance'. Meanwhile, the price indices of 'Education', 'Communication', 'Recreation and Culture' remained unchanged during the month

Table 02: Contribution to the change in CCPI from April 2024 to May 2024 (Base2021=100)

	Rs.Cts.	Value Change		Net effect
		Increase	Decrease	
Food	-662.24	0.73	1.10	-0.37
1 RICE	40.76	0.02		
<i>Rice - (Kekulu white)</i>	<i>12.39</i>	<i>0.01</i>		
<i>Rice - (Kekulu - red)</i>	<i>25.37</i>	<i>0.01</i>		
2 Gram	-20.88		0.01	
3 Noodles	-9.22		0.01	
4 Chicken	-178.91		0.10	
5 Fresh Fish	652.71	0.36		
6 Canned fish	-28.32		0.02	
7 Milk powder	-67.79		0.04	
8 Eggs	-14.50		0.01	
9 Coconut oil	-10.34		0.01	
10 Vegetable oil	9.66	0.01		
11 Fresh Fruits	-467.65		0.26	
<i>Banana</i>	<i>-66.38</i>		<i>0.04</i>	
<i>Mangoes</i>	<i>-300.37</i>		<i>0.17</i>	
12 Vegetables	-226.67		0.13	
13 Potatoes	-60.14		0.03	
14 Red onions	32.81	0.02		
15 Big onions	-670.15		0.37	
16 Green chillies	-41.79		0.02	
17 Chili powder	-29.80		0.02	
18 Pepper	-9.03		0.01	
19 Dried chillies	-37.95		0.02	
20 Limes	412.69	0.23		
21 Ginger	112.81	0.06		

22	Tea dust/ leaves	51.13	0.03		
23	Others	-101.67		0.06	
Non Food		-352.41	0.05	0.24	-0.20
24	Alcoholic beverages Tobacco and Narcotic	-74.29		0.04	
	<i>Beetle leaves</i>	<i>-78.33</i>		<i>0.04</i>	
25	Clothing and Footwear	24.59	0.01		
26	Housing, Water, Electricity, Gas and Other Fuels	-259.53		0.14	
	<i>Maintenance/ Reconstruction</i>	<i>-84.75</i>		<i>0.05</i>	
	<i>L. P. Gas</i>	<i>-141.42</i>		<i>0.08</i>	
	<i>Kerosene oil</i>	<i>-33.36</i>		<i>0.02</i>	
27	Health	15.27	0.01		
	<i>Consultation fees to specialists</i>	<i>13.22</i>	<i>0.01</i>		
28	Transport	-101.26		0.06	
	<i>Petrol</i>	<i>-51.18</i>		<i>0.03</i>	
	<i>Diesel</i>	<i>-68.39</i>		<i>0.04</i>	
	<i>Cost of servicing of vehicles</i>	<i>13.05</i>	<i>0.01</i>		
29	Miscellaneous Goods and Services	38.38	0.02		
	<i>Hair cutting and shaving charges</i>	<i>31.51</i>	<i>0.02</i>		
30	Others	4.43	0.00		
All Items		-1014.65	0.78	1.34	-0.57

\*Percentages of items do not tally with overall percentage due to rounding off.

## 2. Inflation

The CCPI is an economic indicator constructed to measure inflation which is defined as percentage change in CCPI over the year. There are two measures of inflation in general use. One measure is Year on Year base or Point to Point inflation (The percentage change in the CPI during the last 12 months). The other measure is Moving Average Inflation (The percentage difference between the average Price Index of last 12 months & the average Price Index of previous 12 months).

Table 03: Movements of the CCPI (Base: 2021=100)

Year	Month	All Item				Food				Non Food				
		Index Number	% Change Month on Month	Inflation %		Index Number	% Change Month on Month	Inflation %		Index Number	% Change Month on Month	Inflation %		
				Y on Y	12 Month Moving Avg.			Y on Y	12 Month Moving Avg.			Y on Y	12 Month Moving Avg.	
2023	May	192.3	0.0	25.2	232.7	1.7	21.5	177.9	-0.8	27.0				
	June	192.3	0.0	12.0	235.7	1.3	4.1	176.9	-0.6	16.2				
	July	190.2	-1.1	6.3	235.8	0.0	-1.4	173.9	-1.7	10.5				
	August	190.1	-0.1	4.0	232.8	-1.3	-4.8	174.9	0.6	8.7				
	September	191.8	0.9	1.3	234.1	0.6	-5.2	176.7	1.0	4.7				
	October	191.4	-0.2	1.5	229.5	-2.0	-5.2	177.8	0.6	4.9				
	November	193.4	1.0	3.4	230.3	0.3	-3.6	180.2	1.3	6.8				
	December	195.1	0.9	4.0	238.9	3.7	0.3	12.1	179.5	-0.4	5.8	20.0		
	2024	January	200.7	2.9	6.4	14.2	247.9	3.8	3.3	8.5	183.9	2.5	7.9	17.1
		February	200.6	0.0	5.9	11.3	242.8	-2.1	3.5	5.4	185.6	0.9	7.0	14.2
		March	196.7	-1.9	0.9	8.0	237.8	-2.1	3.8	2.9	182.1	-1.9	-0.5	10.5
		April	195.2	-0.8	1.5	5.7	235.4	-1.0	2.9	1.2	180.9	-0.7	0.9	7.9
May		194.1	-0.6	0.9	3.9	232.6	-1.2	0.0	-0.3	180.3	-0.3	1.3	6.0	

Note: Year on Year inflation, 12 Month Moving Average inflation and Month on Month change were calculated using the rounding off index numbers

### 2.1 Year on Year (Y-on-Y) Inflation

The overall rate of inflation as measured by the CCPI on Y-on-Y basis is 0.9% in May 2024 and Y-on-Y inflation calculated for the month of April 2024 was 1.5% (Table 3). The Y-on-Y inflation of Food Group decreased to 0.0% in May 2024 from 2.9% in April 2024 and the Y-on-Y inflation of Non Food Group increased to 1.3% in May 2024 from 0.9% in April 2024.

### 2.2 Contribution to Y on Y inflation:

For the month of May 2024, on Y-on-Y basis, contribution to inflation by food commodities was -0.01%.

The contribution of Non Food items was 0.94%. This was mainly due to price increases in groups of items Transport' (0.94%), 'Alcoholic beverages Tobacco and Narcotics' (0.50%), 'Education' (0.46%), 'Restaurants and Hotels' (0.33%), 'Miscellaneous Goods and Services' (0.10%), Communication (0.07%), 'Recreation and Culture' (0.06%), 'Clothing and Footwear' (0.04%), 'Furnishing Household Equipment and Routine Household Maintenance' (0.03%) and price decreases recorded in the groups of 'Housing, Water, Electricity, Gas and Other Fuels' (1.57%) and Health (0.03%) Compared to the month of May 2023.

Table 04: Contribution to the increase in CCPI from May 2023 May 2024  
(Base 2021=100)

Sub Group/Commodity	Value Change Rs.Cts.	Increase %	Decrease %	Net effect %
Food and Non Alcoholic Beverages	-14.07	1.75	1.76	-0.01
Rice	613.24	0.35		
Wheat flour	-37.77		0.02	
Green gram	-39.48		0.02	
Bread (Normal)	-127.41		0.07	
Chicken	-391.76		0.22	
Sea fish	-540.99		0.31	
Dried Fish	-115.57		0.07	
Milk powder	-470.56		0.27	
Eggs	-90.59		0.05	
Coconuts	-27.32		0.02	
Coconut oil	-193.48		0.11	
Fresh Fruits	-65.82		0.04	
Vegetable	1011.53	0.57		
Potatoes	6.82	0.00		
Big Onions	962.04	0.54		
Garlic	48.65	0.03		
Sugar	87.01	0.05		
Dried chillies	-187.68		0.11	
Ginger	199.68	0.11		
Tea dust/ leaves	160.86	0.09		
Non Food	1662.21	2.54	1.60	0.94
Alcoholic beverages Tobacco and Narcotic	890.43	0.50		
<i>Arrack</i>	<i>273.44</i>	<i>0.15</i>		
<i>Whiskey</i>	<i>132.58</i>	<i>0.08</i>		
<i>Beer</i>	<i>31.13</i>	<i>0.02</i>		
<i>Cigarettes</i>	<i>362.16</i>	<i>0.21</i>		
Clothing and Footwear	72.60	0.04		
Housing, Water, Electricity, Gas and Other Fuels	-2771.12		1.57	
<i>Maintenance/ Reconstruction</i>	<i>-204.85</i>		<i>0.12</i>	
<i>Water bills</i>	<i>1533.67</i>	<i>0.87</i>		
<i>Electricity bill</i>	<i>-4627.61</i>		<i>2.62</i>	
<i>L. P. Gas</i>	<i>141.77</i>	<i>0.08</i>		
<i>Kerosene oil</i>	<i>-94.84</i>		<i>0.05</i>	
Furnishing Household Equipment and Routine Household Maintenance	53.39	0.03		
Health	-46.99		0.03	
<i>Purchase of medical/ pharmacy products</i>	<i>-97.49</i>		<i>0.06</i>	
<i>Consultation fees to specialists</i>	<i>97.72</i>	<i>0.06</i>		
Transport	1664.29	0.94		
<i>Petrol</i>	<i>747.66</i>	<i>0.42</i>		
<i>Diesel</i>	<i>89.46</i>	<i>0.05</i>		
Communication	119.73	0.07		
Recreation and Culture	104.77	0.06		
Education	811.68	0.46		
Restaurant and hotels	583.11	0.33		
Miscellaneous Goods and Services	180.32	0.10		
All Items	1648.13	4.29	3.35	0.93

\*Percentages of items do not tally with overall percentage due to rounding off.

Movements in the CCPI (Base 2021=100) for Head Line, Food, Non Food and Year on Year Inflation

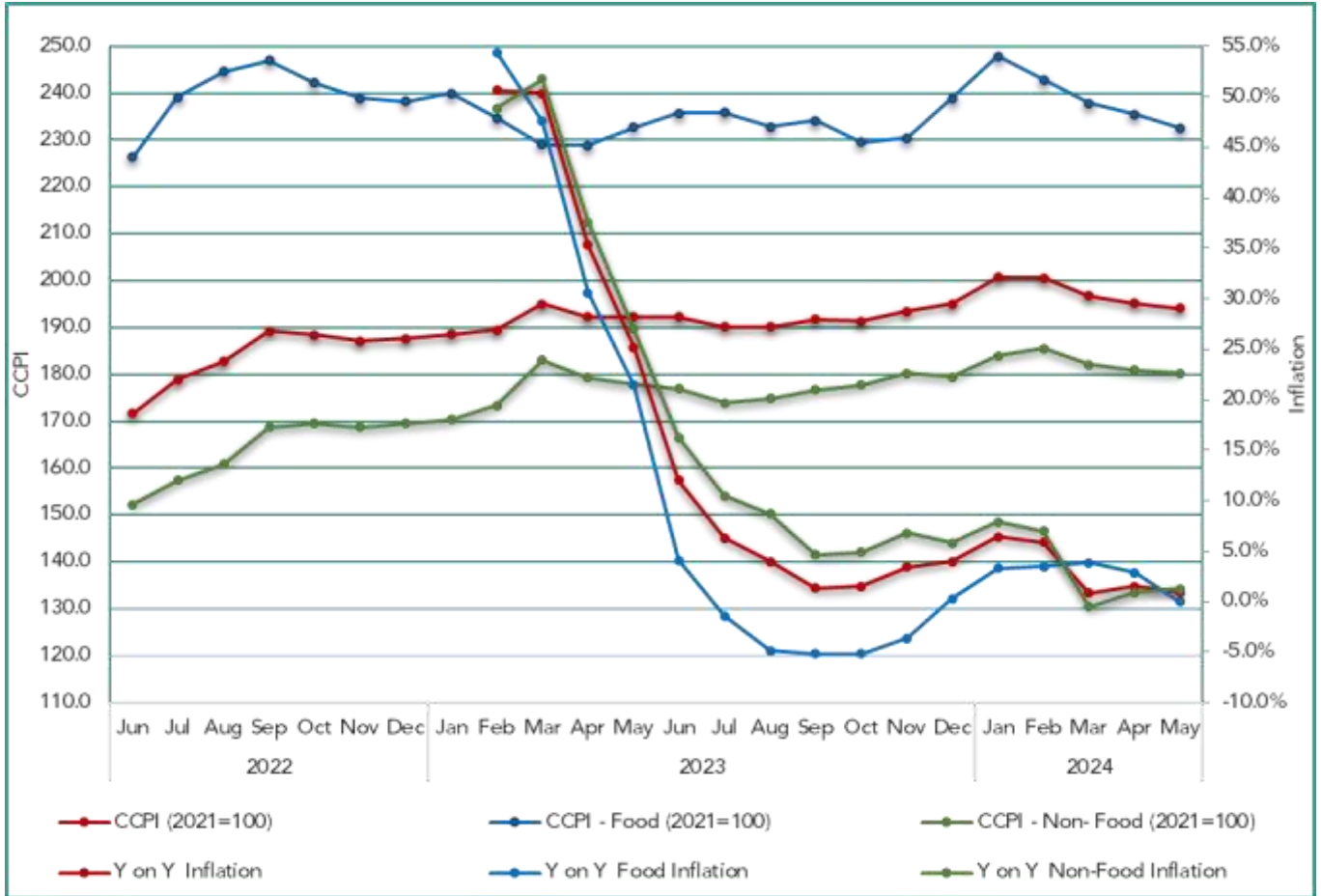


Table 05: Monthly average open market retail prices of selected items of Colombo Consumer Price Index May 2023, April &amp; May 2024

Item	Unit	Retail Prices (Rs. Cts)			Retail Price Changes (%)	
		2023 May.	2024 Apr.	2024 May.	May. 24/ May. 23	May. 24 / Apr. 24
1. Rice– Kekulu – Red	Kg	177.65	191.33	195.12	9.84	1.98
2. Rice– Kekulu – White	Kg	192.38	207.82	209.62	8.96	0.87
3. Rice –Nadu - White	Kg	201.92	218.20	218.91	8.42	0.33
4. Rice –Nadu - Red	Kg	223.16	222.74	223.43	0.12	0.31
5. Rice– Samba	Kg	226.50	264.33	264.21	16.65	-0.04
6. Cowpea	Kg	932.79	976.25	930.87	-0.21	-4.65
7.Green Grams	Kg	1573.24	1453.25	1437.14	-8.65	-1.11
8. Coconut	Each	112.18	111.17	110.91	-1.13	-0.23
9. Coconut Oil	750ml	531.95	450.79	446.21	-16.12	-1.02
10.Chicken	Kg	1347.91	1255.23	1177.32	-12.66	-6.21
11. Eggs	Each	52.36	48.45	47.71	-8.88	-1.54
12. Red Onion	Kg	418.15	373.27	415.74	-0.58	11.38
13. Big Onion	Kg	125.81	587.82	398.13	216.44	-32.27
14. Potatoes	Kg	259.14	290.45	262.33	1.23	-9.68
15. Garlic	Kg	562.79	660.57	648.65	15.26	-1.80
16. Dried Chillies	Kg	1354.62	1037.34	956.93	-29.36	-7.75
17. Green Chillies	Kg	505.60	441.20	366.27	-27.56	-16.98
18. Sugar	Kg	258.56	283.88	282.08	9.10	-0.63
19. Pepper	Kg	2603.77	2807.79	2758.26	5.93	-1.76
Vegetables-						
20. Ash Plantain	Kg	286.07	327.81	290.04	1.39	-11.52
21. Carrot	Kg	273.39	407.43	285.58	4.46	-29.91
22. Snake Gourd	Kg	356.61	314.05	359.58	0.83	14.50
23. Tomatoes	Kg	343.90	270.44	204.67	-40.49	-24.32
24. Capsicum	Kg	573.98	649.29	399.04	-30.48	-38.54
25. Beetroot	Kg	367.96	341.82	394.53	7.22	15.42
26. Beans	Kg	434.44	421.43	392.70	-9.61	-6.82
Fruits						
27. Banana	Kg	328.38	318.48	303.25	-7.65	-4.78
28. Papaw	Kg	259.57	292.26	219.90	-15.28	-24.76
29. Mangoes	Each	180.81	410.48	175.03	-3.20	-57.36
Fresh Fish –						
30. Seer	Kg	3129.70	3115.64	3422.63	9.36	9.85
31.Talapath	Kg	2769.47	2402.84	2543.94	-8.14	5.87
32.Paraw	Kg	2438.02	2196.51	2354.53	-3.42	7.19
Dried Fish -						
33.Katta	Kg	2435.85	2186.14	2177.36	-10.61	-0.40
34. Sprats	Kg	1259.87	1258.92	1245.21	-1.16	-1.09
Fuel -						
35. Kerosene Oil	Lt	295.00	248.00	222.50	-24.58	-10.28
36. Petrol (CPC & IOC)	Lt	334.75	371.00	368.75	10.16	-0.61
37. Diesel (CPC & IOC)	Lt	313.75	363.00	340.50	8.53	-6.20
38. Gas- Avg.	12.5kg	3750.11	4179.37	3965.00	5.73	-5.13
Litro	12.5kg	3670.14	4148.75	3983.75	8.54	-3.98
Laughs	12.5kg	3990.00	4271.25	3908.75	-2.04	-8.49




The Vision of DCS





“To be the leader in the region in producing timely statistical information to achieve the country’s development goals.”





The Mission of DCS

“Making contribution in the socioeconomic development of the country by providing accurate timely statistics, more Effectively by means of new technology, and utilising the services of dedicated staff under a strategic leadership to become a prosperous nation in the globalised environment.”

---

 Department of Census & Statistics,  
Sankyana Mandiraya  
No. 306/71, Polduwa  
Road, Battaramulla

 [info@statistics.gov.lk](mailto:info@statistics.gov.lk)  
 +94 11 2147000  
 +94 11 2147011  
 [statistics.gov.lk](http://statistics.gov.lk)

This publication is produced by the Prices and Wages Division  
 5<sup>th</sup> floor, Department of Census and Statistics  
 [prices@statistics.gov.lk](mailto:prices@statistics.gov.lk)  
 +94 11 2147414  +94 11 2877945