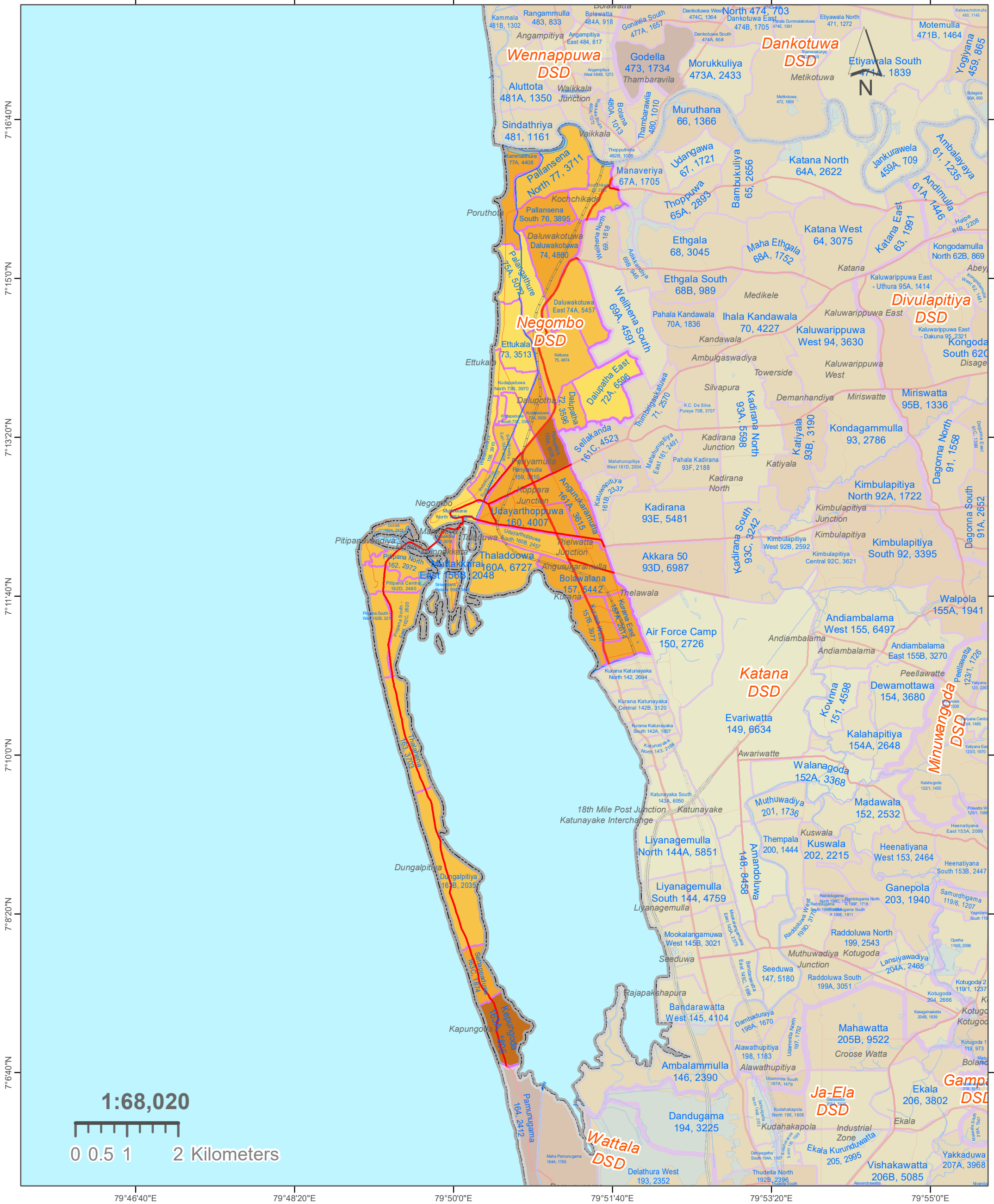


MAP 1203 A: GN DIVISIONS OF NEGOMBO DS DIVISION, GAMPAHA DISTRICT. (14)

OVERLAYED WITH DEPENDANCY RATIO - 2012 (Percentage of Age less than 15 & over 60 Population)



	District Boundaries		Water Areas		52.6 - 59.9
	DSD Boundaries		Streams / Rivers		60.0 - 66.5
	Expressways	GND - Dependency Ratio**			66.6 - 74.8
	Main Roads		0.0 - 29.3		74.9 - 92.7
	Secondary Roads		29.4 - 52.5		92.8 - 158.9
	Tertiary Roads	**Dependency Ratio = (Persons Aged below 15 years and above 59 years / Persons Aged 15 to 59 years) * 100			

Label Descriptions:

GN Div. Name Place Names
 GND Num., Population

Ex: Siyambalape South Daranagama
 274A, 6127

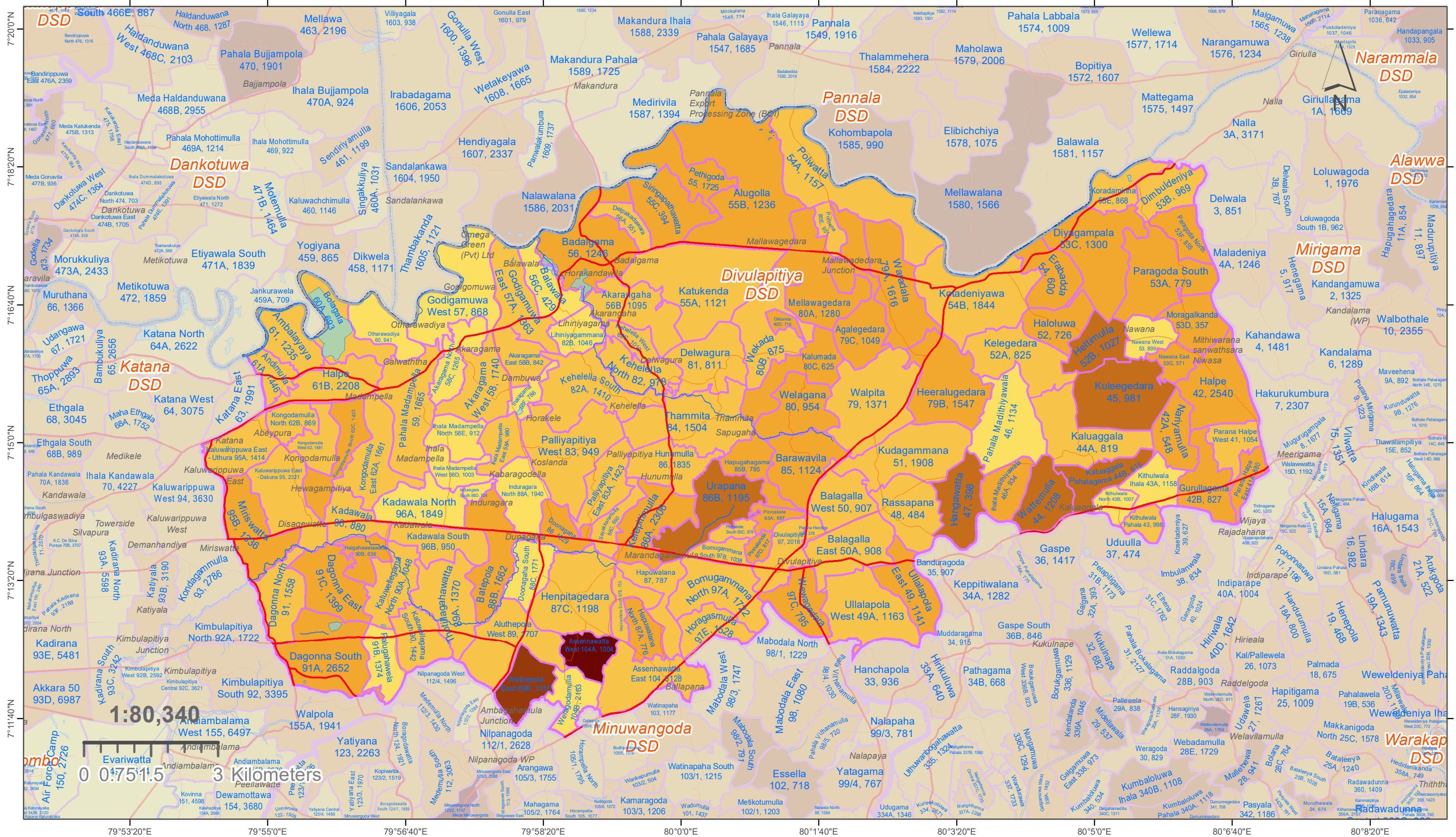
Note:
 Used 2011/12 data-sets of Administrative Division (District / DSD / GND) Boundaries and Population data sets of Department of Census & Statistics.

Used 2020 Open Street Map Layers used for Feature Layers (Roads / Places / Water Bodies / Streams).

Software Used: Arc Map of Esri Organisation.

Prepared by the Cartography Division of Department of Census & Statistics.

MAP 1209 A: GN DIVISIONS OF DIVULAPITIYA DS DIVISION, GAMPAHA DISTRICT. (16) OVERLAYED WITH DEPENDANCY RATIO - 2012 (Percentage of Age less than 15 & over 60 Population)



Legend

	District Boundaries		Expressways
	DSD Boundaries		Main Roads
	0.0 - 29.3		Secondary Roads
	29.4 - 52.5		Tertiary Roads
	Water Areas		Streams / Rivers

Label Descriptions:

GN Div. Name
GND Num., Population
Place Names

Ex: Siyambalape South
274A, 6127
Daranagama

****Dependency Ratio =**
(Persons Aged below 15 years
and above 59 years /
Persons Aged 15 to 59 years) * 100

Note:
Used 2011/12 data-sets of Administrative Division (District / DSD / GND)
Boundaries and Population data sets of Department of Census & Statistics.

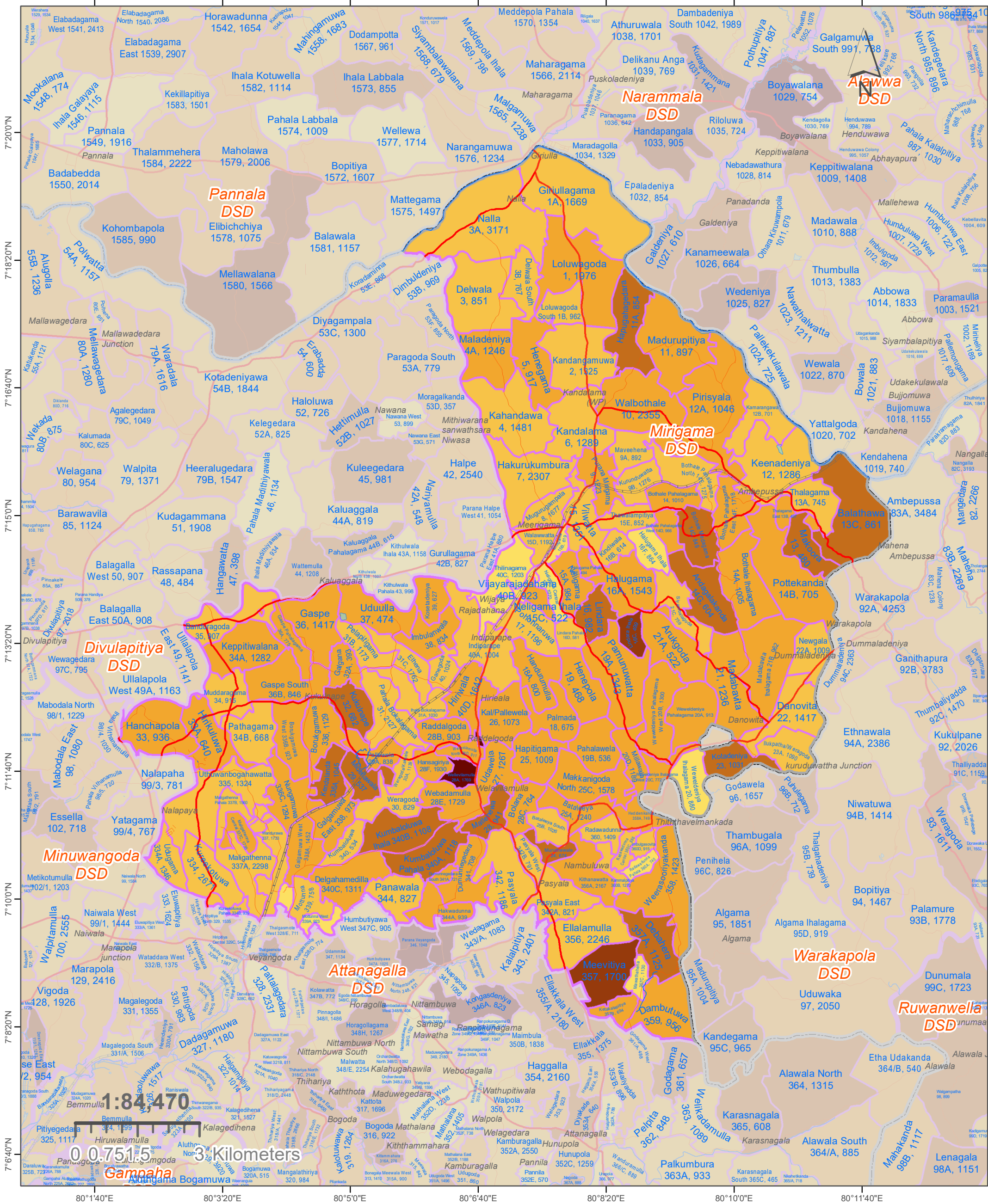
Used 2020 Open Street Map Layers used for Feature Layers
(Roads / Places / Water Bodies / Streams).

Software Used: Arc Map of Esri Organisation.

Prepared by the Cartography Division of Department of Census & Statistics.

MAP 1212 A: GN DIVISIONS OF MIRIGAMA DS DIVISION, GAMPAHA DISTRICT. (17)

OVERLAYED WITH DEPENDANCY RATIO - 2012 (Percentage of Age less than 15 & over 60 Population)



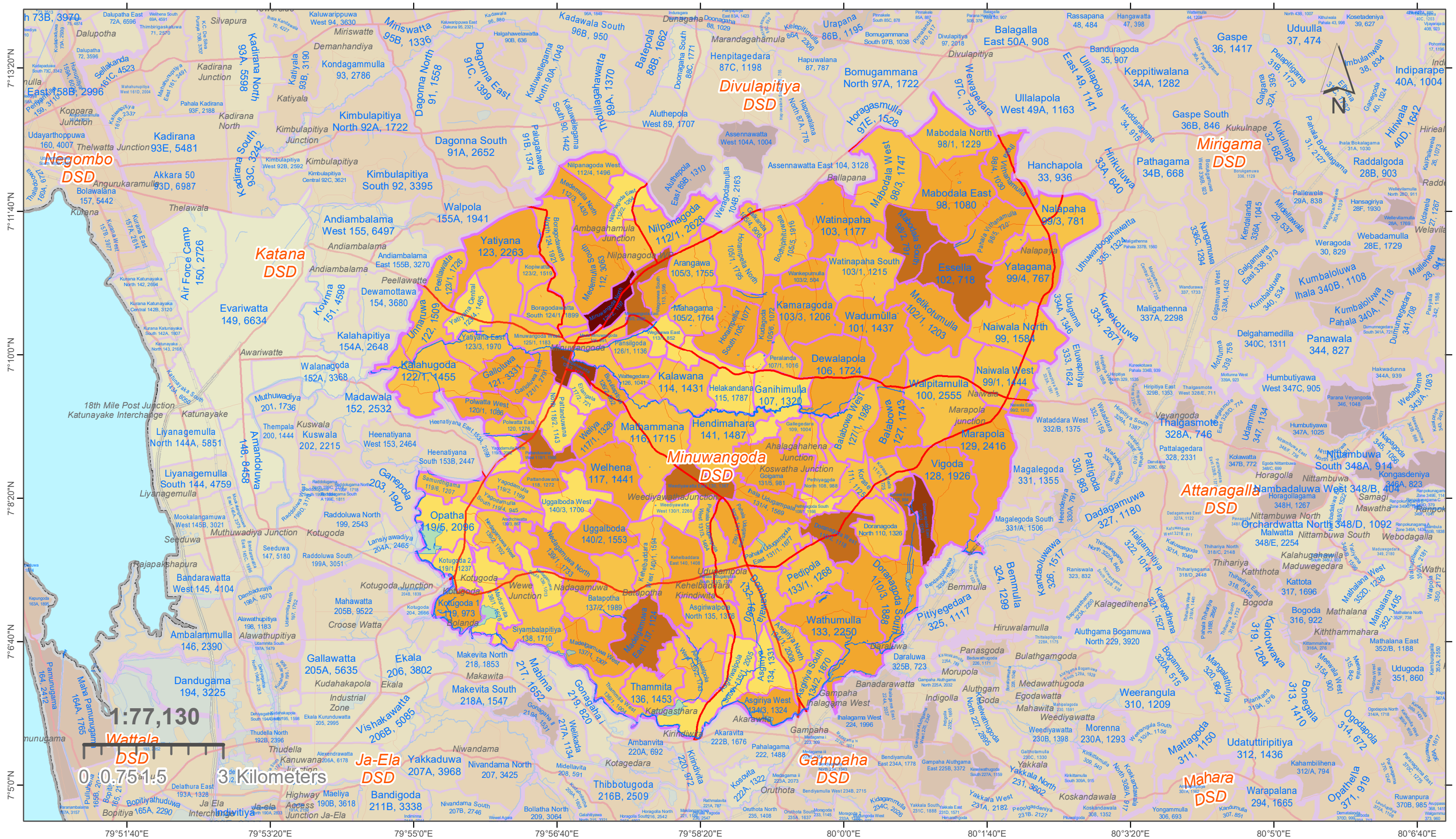
	District Boundaries		Water Areas		52.6 - 59.9
	DSD Boundaries		Streams / Rivers		60.0 - 66.5
	Expressways		GN Div. Name		66.6 - 74.8
	Main Roads		GND Num., Population		74.9 - 92.7
	Secondary Roads		Place Names		92.8 - 158.9
	Tertiary Roads				

****Dependency Ratio =**
 $(\text{Persons Aged below 15 years and above 59 years} / \text{Persons Aged 15 to 59 years}) * 100$

Label Descriptions:
 GN Div. Name
 GND Num., Population
 Ex: Siyambalape South 274A, 6127

Software Used: Arc Map of Esri Organisation.
 Prepared by the Cartography Division of Department of Census & Statistics.

MAP 1215 A: GN DIVISIONS OF MINUWANGODA DS DIVISION, GAMPAHA DISTRICT. (18) OVERLAYED WITH DEPENDANCY RATIO - 2012 (Percentage of Age less than 15 & over 60 Population)



Legend

	District Boundaries		Expressways
	DSD Boundaries		Main Roads
	GND - Dependency Ratio**		Secondary Roads
	0.0 - 29.3		Tertiary Roads
	29.4 - 52.5		Water Areas
	52.6 - 59.9		Streams / Rivers
	60.0 - 66.5		
	66.6 - 74.8		
	74.9 - 92.7		
	92.8 - 158.9		

**Dependency Ratio =
(Persons Aged below 15 years
and above 59 years /
Persons Aged 15 to 59 years) * 100

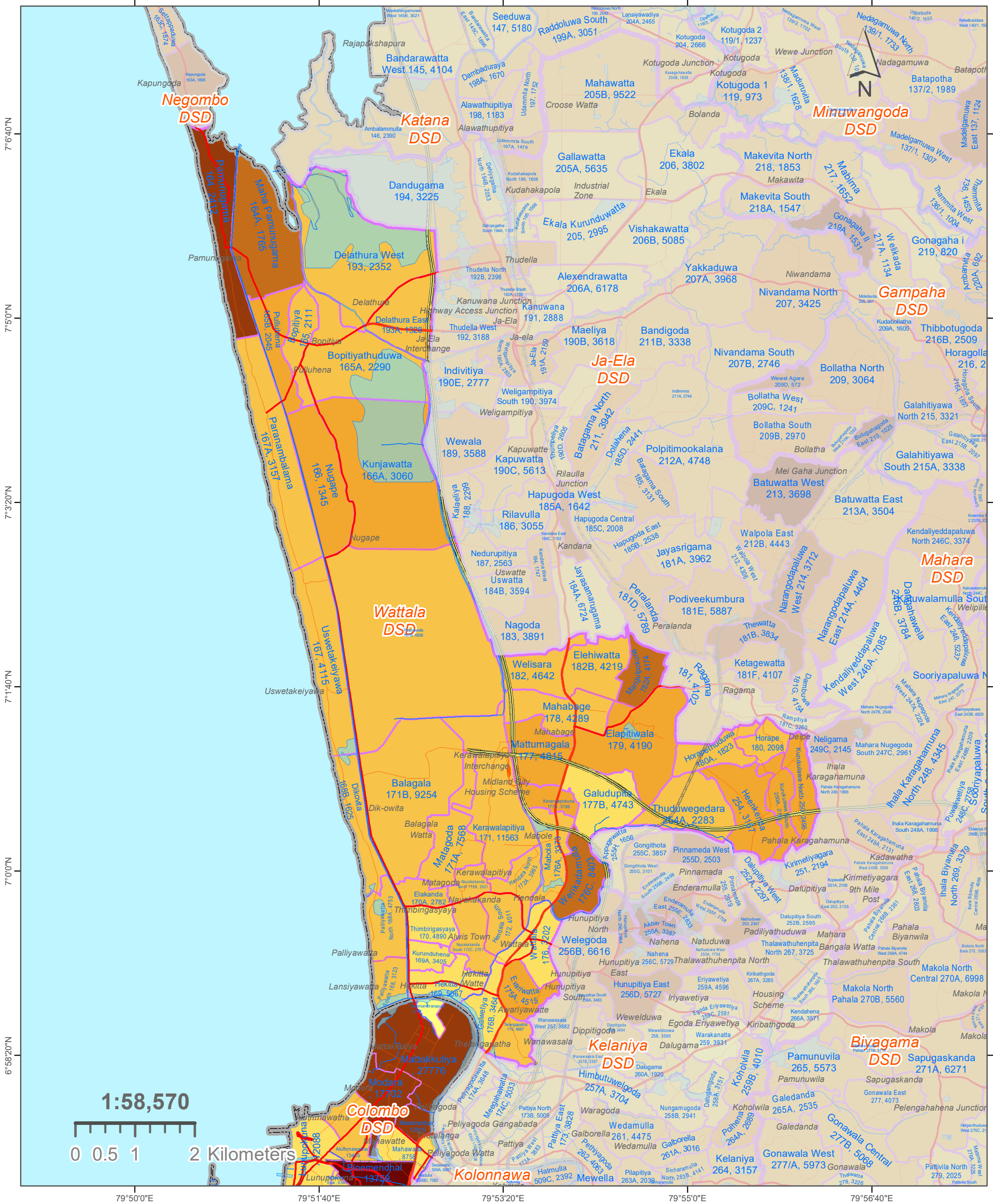
Label Descriptions:
GN Div. Name
GND Num., Population
Place Names
Ex: Siyambalape South
274A, 6127
Daranagama



Note:
Used 2011/12 data-sets of Administrative Division (District / DSD / GND)
Boundaries and Population data sets of Department of Census & Statistics.
Used 2020 Open Street Map Layers used for Feature Layers
(Roads / Places / Water Bodies / Streams).
Software Used: Arc Map of Esri Organisation.
Prepared by the Cartography Division of Department of Census & Statistics.

MAP 1218 A: GN DIVISIONS OF WATTALA DS DIVISION, GAMPAHA DISTRICT. (19)

OVERLAYED WITH DEPENDANCY RATIO - 2012 (Percentage of Age less than 15 & over 60 Population)



- District Boundaries
- DSD Boundaries
- Expressways
- Main Roads
- Secondary Roads
- Tertiary Roads
- Water Areas
- Streams / Rivers

GND - Dependency Ratio**

- 0.0 - 29.3
- 29.4 - 52.5
- 52.6 - 59.9
- 60.0 - 66.5
- 66.6 - 74.8
- 74.9 - 92.7
- 92.8 - 158.9

**Dependency Ratio =
(Persons Aged below 15 years and above 59 years / Persons Aged 15 to 59 years) * 100

Label Descriptions:

GN Div. Name *Place Names*
GND Num., Population

Ex: Siyambalape South Daranagama
 274A, 6127



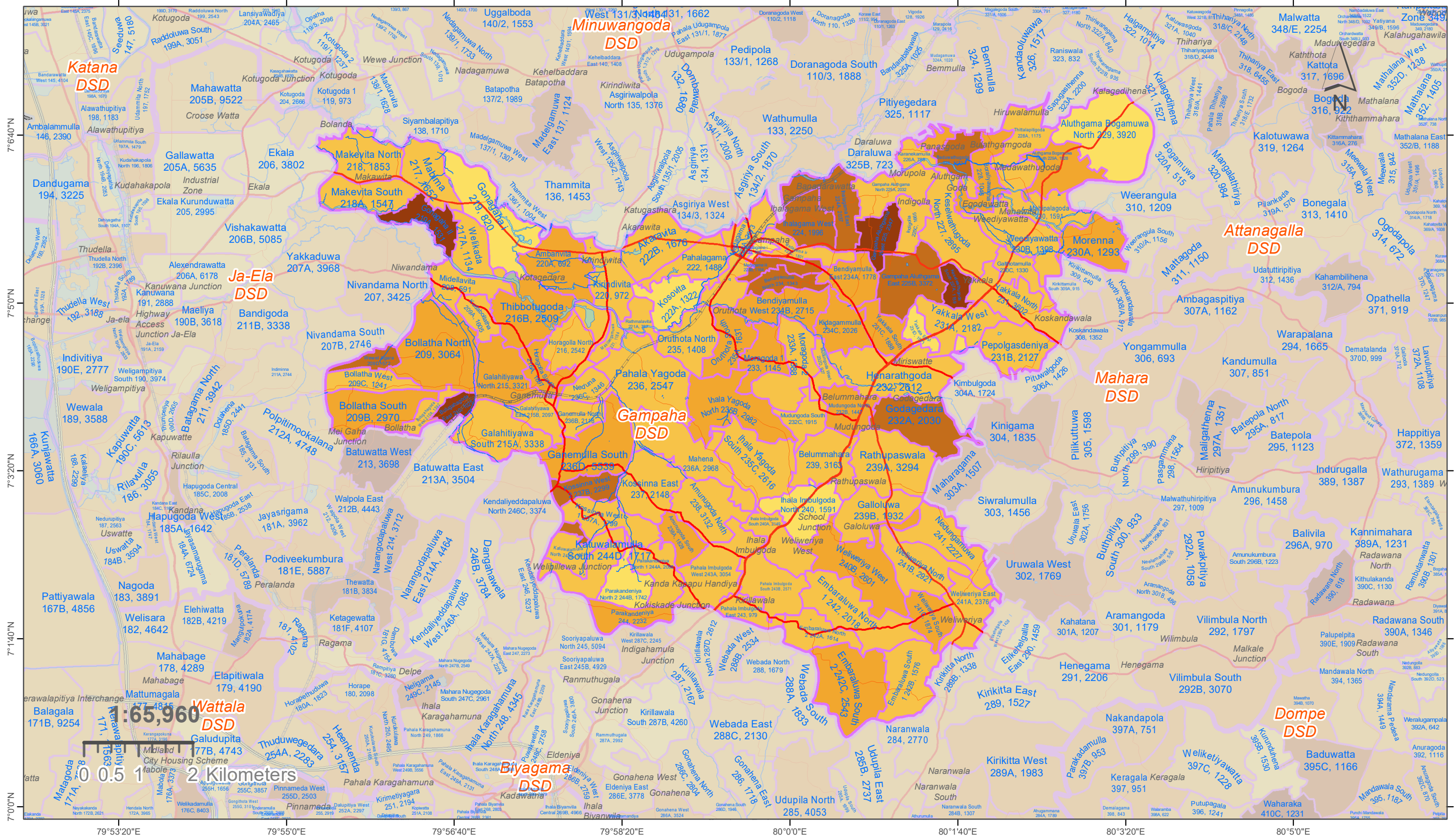
Note:
 Used 2011/12 data-sets of Administrative Division (District / DSD / GND) Boundaries and Population data sets of Department of Census & Statistics.

Used 2020 Open Street Map Layers used for Feature Layers (Roads / Places / Water Bodies / Streams).

Software Used: Arc Map of Esri Organisation.

Prepared by the Cartography Division of Department of Census & Statistics.

MAP 1224 A: GN DIVISIONS OF GAMPAHA DS DIVISION, GAMPAHA DISTRICT. (21) OVERLAYED WITH DEPENDANCY RATIO - 2012 (Percentage of Age less than 15 & over 60 Population)



Legend

- District Boundaries
- DSD Boundaries
- GND - Dependency Ratio****
- 0.0 - 29.3
- 29.4 - 52.5
- 52.6 - 59.9
- 60.0 - 66.5
- 66.6 - 74.8
- 74.9 - 92.7
- 92.8 - 158.9
- Expressways
- Main Roads
- Secondary Roads
- Tertiary Roads
- Water Areas
- Streams / Rivers

**Dependency Ratio =
(Persons Aged below 15 years
and above 59 years /
Persons Aged 15 to 59 years) * 100

Label Descriptions:

GN Div. Name
GND Num., Population
Place Names

Ex: Siyambalape South
274A, 6127
Daranagama



Note:
Used 2011/12 data-sets of Administrative Division (District / DSD / GND)
Boundaries and Population data sets of Department of Census & Statistics.
Used 2020 Open Street Map Layers used for Feature Layers
(Roads / Places / Water Bodies / Streams).
Software Used: Arc Map of Esri Organisation.
Prepared by the Cartography Division of Department of Census & Statistics.

MAP 1227 A: GN DIVISIONS OF ATTANAGALLA DS DIVISION, GAMPAHA DISTRICT. (22) OVERLAYED WITH DEPENDANCY RATIO - 2012 (Percentage of Age less than 15 & over 60 Population)



Legend

	District Boundaries		Expressways
	DSD Boundaries		Main Roads
GND - Dependency Ratio**			Secondary Roads
	0.0 - 29.3		Tertiary Roads
	29.4 - 52.5		Water Areas
	52.6 - 59.9		Streams / Rivers
	60.0 - 66.5		
	66.6 - 74.8		
	74.9 - 92.7		
	92.8 - 158.9		

Label Descriptions:

GN Div. Name
GND Num., Population
Place Names

Ex: Siyambalape South
274A, 6127
Daranagama

**Dependency Ratio =
(Persons Aged below 15 years
and above 59 years /
Persons Aged 15 to 59 years) * 100

Note:
Used 2011/12 data-sets of Administrative Division (District / DSD / GND)
Boundaries and Population data sets of Department of Census & Statistics.

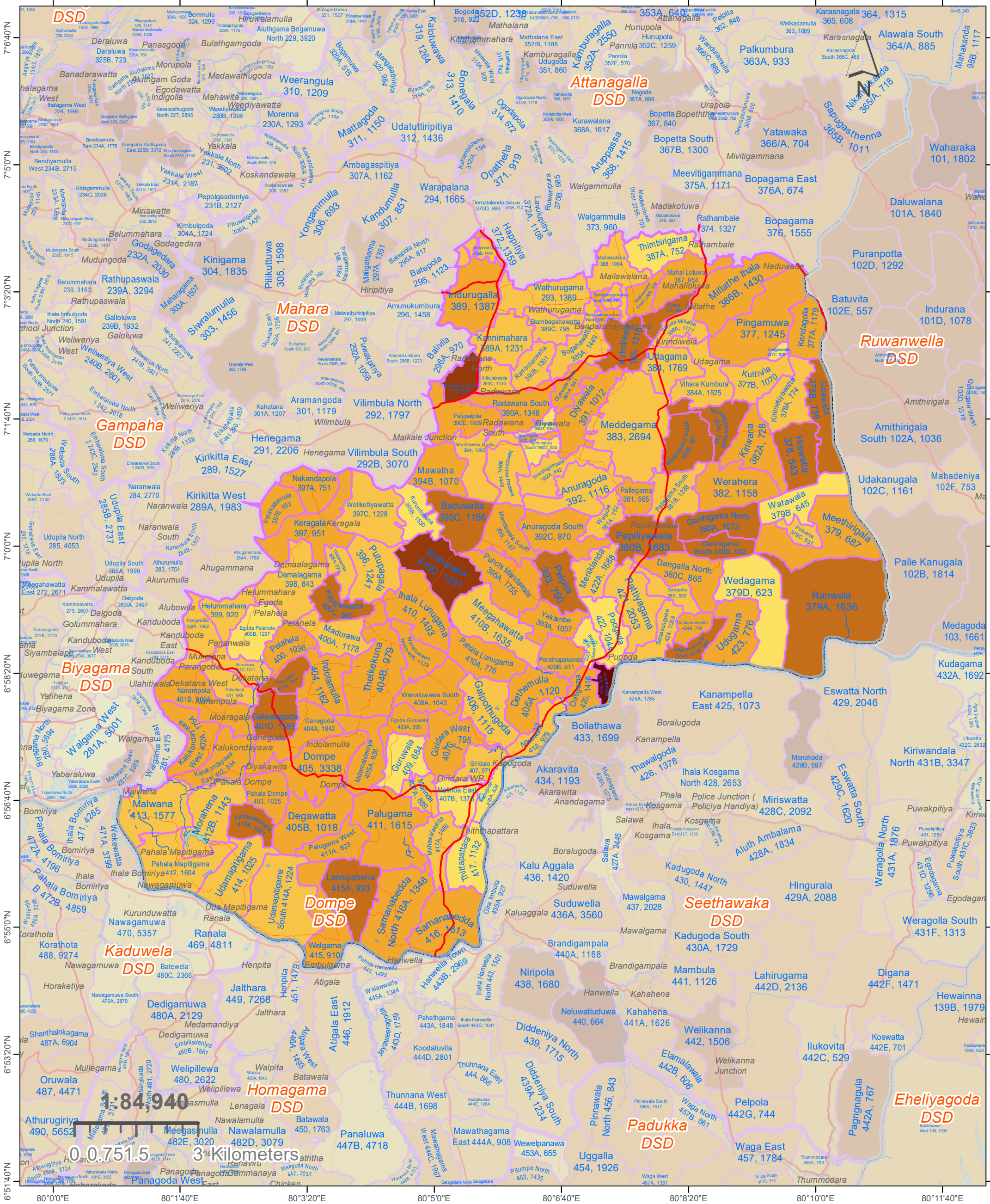
Used 2020 Open Street Map Layers used for Feature Layers
(Roads / Places / Water Bodies / Streams).

Software Used: Arc Map of Esri Organisation.

Prepared by the Cartography Division of Department of Census & Statistics.

MAP 1230 A: GN DIVISIONS OF DOMPE DS DIVISION, GAMPAHA DISTRICT. (23)

OVERLAYED WITH DEPENDANCY RATIO - 2012 (Percentage of Age less than 15 & over 60 Population)



	District Boundaries		Water Areas		52.6 - 59.9
	DSD Boundaries		Streams / Rivers		60.0 - 66.5
	Expressways		GN - Dependency Ratio**		66.6 - 74.8
	Main Roads				74.9 - 92.7
	Secondary Roads				92.8 - 158.9
	Tertiary Roads				

**Dependency Ratio = (Persons Aged below 15 years and above 59 years / Persons Aged 15 to 59 years) * 100

Label Descriptions:

GN Div. Name Place Names
 GND Num., Population

Ex: Siyambalape South Daranagama
 274A, 6127

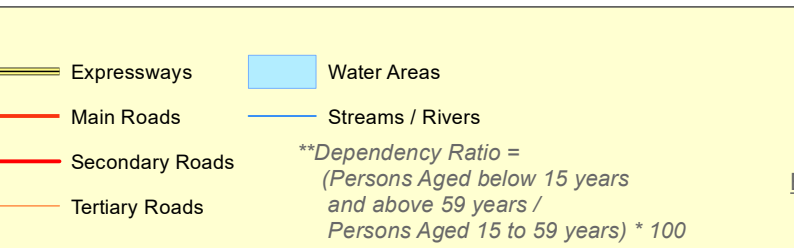
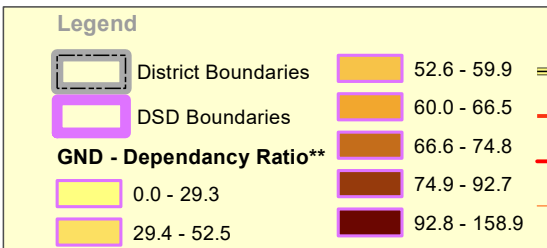
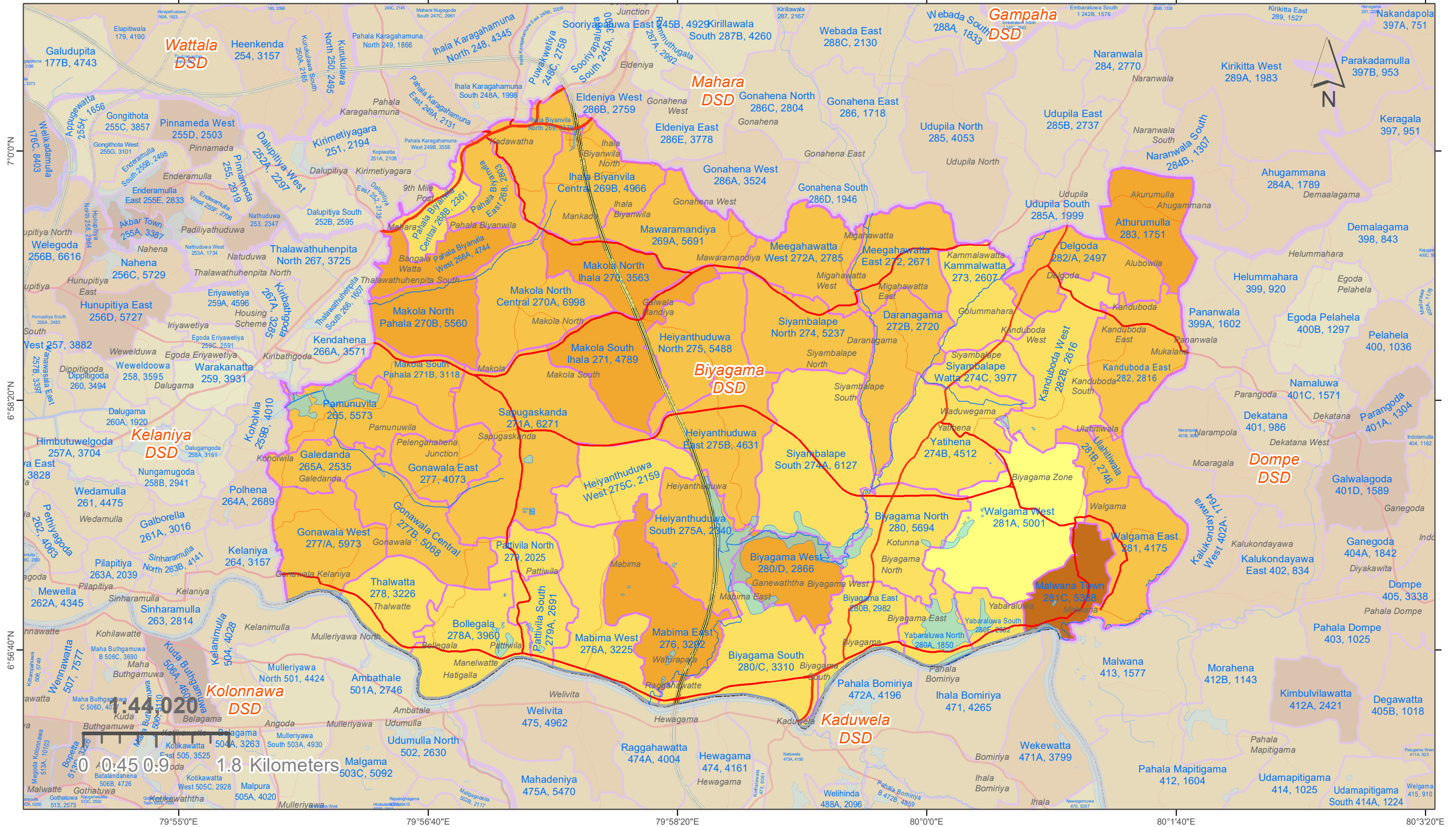
Note:
 Used 2011/12 data-sets of Administrative Division (District / DSD / GND) Boundaries and Population data sets of Department of Census & Statistics.

Used 2020 Open Street Map Layers used for Feature Layers (Roads / Places / Water Bodies / Streams).

Software Used: Arc Map of Esri Organisation.

Prepared by the Cartography Division of Department of Census & Statistics.

MAP 1239 A: GN DIVISIONS OF BIYAGAMA DS DIVISION, GAMPAHA DISTRICT. (26) OVERLAYED WITH DEPENDANCY RATIO - 2012 (Percentage of Age less than 15 & over 60 Population)



Label Descriptions:

GN Div. Name
GND Num., Population

Place Names

Ex: Siyambalape South
274A, 6127

Daranagama



Note:
Used 2011/12 data-sets of Administrative Division (District / DSD / GND) Boundaries and Population data sets of Department of Census & Statistics.

Used 2020 Open Street Map Layers used for Feature Layers (Roads / Places / Water Bodies / Streams).

Software Used: Arc Map of Esri Organisation.

Prepared by the Cartography Division of Department of Census & Statistics.