



Sri Lanka Labour Force Statistics

Quarterly Bulletin, Second Quarter 2022

Department of Census and Statistics

Ministry of Finance, Economic Stabilization and National Policies

Sri Lanka Labour Force Survey (LFS) is designed to measure the levels and trends of employment, unemployment and labour force in Sri Lanka. LFS has been conducted quarterly, since the first quarter of 1990.

This bulletin contains labour force, employment and unemployment statistics for the second quarter 2022 based on the data collected in April, May and June in 2022 covering the whole country.

This bulletin is based on the quarterly sample of 6440 housing units. The survey covers persons living in housing units only and it excludes the institutional population.

-
- Labour force participation rate is 50.1% for the second quarter of 2022.
 - Unemployment rate for the survey period is 4.6%.
-

Content

Labour force (Page 1)

Employment (Page 1- 2)

Unemployment (Page 3)

Selected Labour Force Indicators (Page 4)

Source Publication

<http://www.statistics.gov.lk/LabourForce/StatisticalInformation/Bulletins/2ndQuarter2022>

Labour Force

All persons aged 15 years & over who are currently economically active during the reference period (Labour Force = employed persons + unemployed persons)

Reference Period:

Previous week of the survey week
(3rd week of every month)

Labour force participation rate (LFPR)

Labour force as a percentage of the population aged 15 years and over.

Labour Force (Economically Active Population)**Table 1: Economically active population by gender and sector, second quarter - 2022**

Sector	Economically Active Population					
	Total	%	Male	%	Female	%
Sri Lanka	8,575,758	100	5,628,003	65.6	2,947,755	34.4
Urban	1,424,032	100	955,015	67.1	469,017	32.9
Rural	6,754,322	100	4,434,436	65.7	2,319,886	34.3
Estate	397,404	100	238,552	60.0	158,852	40.0

Table 2: Economically inactive population by gender and sector, second quarter - 2022

Sector	Economically Inactive Population					
	Total	%	Male	%	Female	%
Sri Lanka	8,550,237	100	2,312,593	27.0	6,237,643	73.0
Urban	1,565,520	100	439,196	28.1	1,126,324	71.9
Rural	6,673,057	100	1,768,508	26.5	4,904,549	73.5
Estate	311,660	100	104,889	33.7	206,770	66.3

According to the Table 1, the estimated economically active population is about 8.6 million in the second quarter 2022. Of which 65.6 percent are males and 34.4 percent are females. The economically inactive population is about 8.6 million. Out of the economically inactive population 27.0 percent are males and 73.0 percent are females. (Table 2)

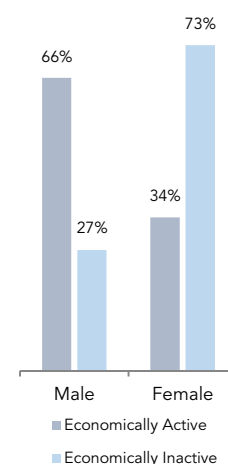
Table 3: LFPR by gender and year, 2017 - 2022Q2

Year	Total	Male	Female
2017	54.1	74.5	36.6
2018	51.8	73.0	33.6
2019	52.3	73.0	34.5
2020	50.6	71.9	32.0
2021	49.9	71.0	31.8
2020 Q2	50.2	71.7	31.6
2021 Q2	49.8	71.1	30.9
2022 Q1	51.2	71.8	33.6
2022 Q2	50.1	70.9	32.1

Table 3 provides the information on LFPRs by gender since year 2017. Referring the Table 3, it is important to note that, male participation to the labour force is always higher than that of female.

Table 4: LFPR by age group and gender, second quarter - 2022

Age group (Years)	Total	Male	Female
Sri Lanka	50.1	70.9	32.1
15 - 19	8.3	10.8	5.7
20 - 24	49.3	62.9	36.6
25 - 29	64.8	89.6	44.0
30 - 34	63.5	94.7	39.3
35 - 39	68.1	96.0	44.5
40 - 44	69.2	96.8	44.8
45 - 49	69.9	94.7	47.4
50 - 54	67.0	94.7	42.9
55 - 59	57.5	84.0	34.6
60+	29.9	47.9	15.8

Figure 1: Distribution of economically active vs inactive population, second quarter 2022

Considering the Table 4, the distribution of LFPR by age group and by gender depicts high male participation compared to female in all age groups. The highest participation rate for male is reported from age group 40 - 44 years (96.8%), while that for female is reported from 45 - 49 age group (47.4%).

Employment**Employed**

Persons, who worked at least one hour during the reference period, as paid employees, employers, own account workers or contributing family workers are said to be employed. This also includes persons with a job but not at work during the reference period.

Employment Rate

The proportion of employed population to the total labour force.

Table 5: Distribution of employed population by main industry (second quarter 2021 - second quarter 2022)

Quarter	Sri Lanka	Major Industry Group		
		Agriculture	Industries	Services
2021 Q2	8,082,303	2,250,273	2,041,674	3,790,355
(%)	100.0	27.8	25.3	46.9
2021 Q3	8,043,868	2,390,849	1,969,427	3,683,592
(%)	100.0	29.7	24.5	45.8
2021 Q4	8,146,367	2,127,835	2,198,797	3,819,735
(%)	100.0	26.1	27.0	46.9
2022 Q1	8,388,531	2,098,143	2,342,511	3,947,877
(%)	100.0	25.0	27.9	47.1
2022 Q2	8,177,045	2,125,240	2,267,064	3,784,742
(%)	100.0	26.0	27.7	46.3

Table 5 shows the percentage distribution of employed population by main industry from second quarter 2021 to second quarter 2022. During second quarter of 2022, the total number of employed persons in Sri Lanka is estimated as 8.2 million. Of which, about 46.3 percent engaged in service sector, 27.7 percent in industry sector and 26.0 percent in agriculture sector. In the second quarter of 2022, there is an increase in employed persons in industry sector compared to the second quarter of 2021.

Main industry categories and sub sectors

Agriculture

Agriculture Forestry and Fishery (A)

Industries

1. Mining & Quarrying (B)
2. Manufacturing (C)
3. Construction, Electricity, gas, steam and air conditioning supply, Water supply, sewerage, waste management and remediation activities (D, E, F)

Services

1. Wholesale and retail trade, repair of motor vehicles and motor cycles (G)
2. Transportation and storage (H)
3. Accommodation and food services activities (I)
4. Information and communication (J)
5. Financial and insurance activities (K)
6. Professional, scientific and technical activities (M)
7. Administrative and support service activities (N)
8. Public administration and defence compulsory social security (O)
9. Education (P)
10. Human health and social work activities (Q)
11. Other service activities (S)
12. Activities of households as employers; undifferentiated goods and services - producing activities of households for own use (T)
13. Real estate activities (L) Arts, entertainment and recreation (R) Activities of extra territorial organizations & bodies (U)

Table 6: Distribution of employed population by employment status in agriculture and non - agriculture sectors, second quarter - 2022

Employment Status	Sector					
	Sri Lanka		Agriculture		Non-Agriculture	
	No.	%	No.	%	No.	%
Sri Lanka	8,177,045	100.0	2,125,240	26.0	6,051,805	74.0
Employee	4,729,284	100.0	704,794	14.9	4,024,490	85.1
Public	1,234,407	100.0	34,726	2.8	1,199,681	97.2
Private	3,494,877	100.0	670,068	19.2	2,824,809	80.8
Employer	253,639	100.0	29,001	11.4	224,638	88.6
Own Account Worker	2,664,571	100.0	1,088,366	40.8	1,576,205	59.2
Contributing Family Worker	529,552	100.0	303,079	57.2	226,473	42.8

According to the Table 6 Majority of the workforce are private sector employees followed by own account workers. Non agriculture sector covers 74.0 percent of employed population in Sri Lanka, employees and own account workers are highly constraining in that sector.

Table 7 depicts the percentage distribution of male and female employed population by main industry sectors. Highest employment share is in service sector and this is true for both male & female, while the lowest shares are for agriculture sector. Among employed females 25.2 percent is in agriculture sector while this share is 26.4 percent for males.

Figure 2 : Distribution of employed population by employment status and Agriculture/ Non- Agriculture sector, second quarter - 2022

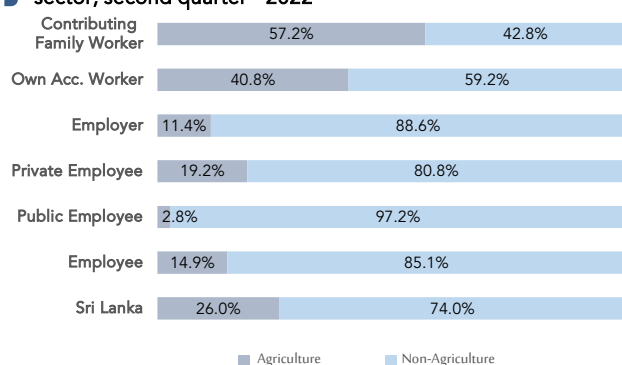


Table 7: Percentage distribution of Employed population by major industry group & gender, second quarter – 2022

Major Industry group	Sri Lanka	Gender	
		Male	Female
Sri Lanka	100.0	100.0	100.0
Agriculture	26.0	26.4	25.2
Industry	27.7	28.6	26.0
Services	46.3	45.0	48.8

Unemployment

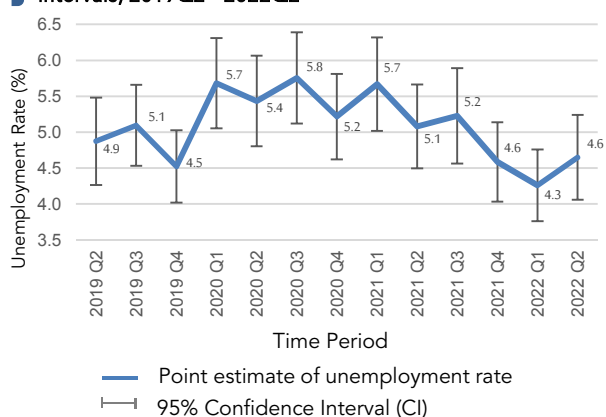
Unemployed

Persons available and/or looking for work, and who did not work and taken steps to find a job during last four weeks and ready to accept a job given a work opportunity within next two weeks are defined as be unemployed.

Unemployment Rate

The proportion of unemployed population to the total labour force.

Figure 3 : Unemployment rates and it's 95% confidence intervals, 2019Q2 - 2022Q2



The number of unemployed persons is estimated as 398,713 during the second quarter 2022. The unemployment rate for the second quarter 2022 is 4.6 percent.

As shown in Figure 3, it is very important to note that, when the changes in unemployment rate is explained the corresponding sampling errors¹ and the confidence limits need to be considered.

Table 8: Number of unemployed and unemployment rate by age group and gender, second quarter - 2022

Age group (Years)	Unemployment Rate (%)			
	Sri Lanka	Gender		
		Number	Sri Lanka	Male
Sri Lanka	398,713	4.6	3.7	6.5
15 - 24	204,741	23.8	21.2	28.1
25 - 29	90,599	11.0	6.6	18.4
Over 30	103,373	1.5	1.3	1.9

1 Sampling error

When a sample, rather than the entire population, is surveyed, estimates differ from the true values of population they represent. This difference, or sampling error, occurs by chance, and its variability is measured by the sampling error of the estimate.

For more details, please refer the explanatory note given under the labour force link in the DCS website; www.statistics.gov.lk

Figure 4 : Unemployment rate by age group and gender, second quarter 2022



As per the table 8, overall unemployment rate reported for female is 6.5 percent and it is 3.7 percent for male. Youth unemployment rate (age 15 – 24 years) corresponding to the second quarter 2022 is 23.8 percent and that is the highest reported unemployment rate among all age groups. Further the unemployment rates for males and females are 21.2 and 28.1 percent respectively for age group 15 - 24.

The survey results further reveals that the unemployment among females is higher than that of males, in all age groups. Youth and female unemployment contribute more to the overall unemployment of the country.

Table 9: Number of unemployed and unemployment rate by level of education, second quarter - 2022

Level of Education	Sri Lanka	Unemployment Rate (%)		
		Gender		
	Number	Sri Lanka	Male	Female
Sri Lanka	398,713	4.6	3.7	6.5
Below GCE O/L	129,677	2.6	2.6	2.8
GCE O/L	103,261	6.6	6.5	7.0
GCE A/L & above	165,775	7.8	4.5	11.3

Figure 5 : Unemployment rate by level of education and gender, second quarter 2022



The highest unemployment rate is reported from the G.C.E.(A/L) and above group which is 7.8 percent. Corresponding percentages are 4.5 percent and 11.3 percent for males and females respectively. Female unemployment rates are higher than those of males in all levels of education.

Survey results further shows that the problem of unemployment is more acute in the case of educated females than educated males, which was observed consistently over the results of previous survey rounds as well.

Selected Labour Force Indicators

Indicator	Year								
	2017	2018	2019	2020	2021	2020Q2	2021Q2	2022Q1	2022Q2
Labour force participation rate									
by gender									
Total	54.1	51.8	52.3	50.6	49.9	50.2	49.8	51.2	50.1
Male	74.5	73.0	73.0	71.9	71.0	71.7	71.1	71.8	70.9
Female	36.6	33.6	34.5	32.0	31.8	31.6	30.9	33.6	32.1
by residential sector									
Total	54.1	51.8	52.3	50.6	49.9	50.2	49.8	51.2	50.1
Urban	50.5	49.6	50.2	47.0	46.9	46.4	46.6	48.4	47.6
Rural	54.8	52.3	52.7	51.3	50.5	51.0	50.5	51.8	50.6
Unemployment rate									
by gender									
Total	4.2	4.4	4.8	5.5	5.1	5.4	5.1	4.3	4.6
Male	2.9	3.0	3.3	4.0	3.7	4.1	3.8	3.0	3.7
Female	6.5	7.1	7.4	8.5	7.9	8.2	7.7	6.5	6.5
by selected age group (year)									
20 – 29	13.5	15.0	15.3	18.1	18.3	18.2	18.2	14.2	17.1
20 – 24	17.8	20.1	20.3	25.2	26.8	26.5	30.2	19.0	24.2
25 – 29	9.5	10.4	11.0	12.0	11.4	11.0	9.2	10.2	11.0
by selected educational level									
GCE A/L an above									
Total	8.1	9.1	8.5	9.8	9.1	10.0	9.1	7.5	7.8
Male	5.0	5.1	5.0	6.2	6.2	6.3	6.1	5.1	4.5
Female	11.3	13.2	11.9	13.6	12.2	14.2	12.5	9.9	11.3
Employed population									
by gender									
Total	8,208,179	8,015,166	8,180,693	7,999,093	8,113,507	7,977,000	8,082,303	8,388,531	8,177,045
Male	5,279,158	5,300,310	5,368,896	5,372,947	5,414,280	5,369,119	5,504,060	5,492,427	5,421,108
Female	2,929,021	2,714,855	2,811,796	2,626,146	2,699,228	2,607,881	2,578,243	2,896,104	2,755,937
by industry (percentage)									
Total	8,208,179	8,015,166	8,180,693	7,999,093	8,113,507	7,977,000	8,082,303	8,388,531	8,177,045
%	100.0	100.0	100.0	100.0	100.0	100.0	100.0	100.0	100.0
Agriculture	2,140,185	2,043,698	2,071,940	2,169,679	2,213,015	2,159,609	2,250,273	2,098,143	2,125,240
%	26.1	25.5	25.3	27.1	27.3	27.1	27.8	25.0	26.0
Industry	2,331,494	2,239,262	2,258,421	2,152,746	2,109,482	2,146,862	2,041,674	2,342,511	2,267,064
%	28.4	27.9	27.6	26.9	26.0	26.9	25.3	27.9	27.7
Services	3,736,500	3,732,206	3,850,332	3,676,668	3,791,011	3,670,528	3,790,355	3,947,877	3,784,742
%	45.5	46.6	47.1	46.0	46.7	46.0	46.9	47.1	46.3
by no. of hours worked per week (percentage)									
Total	100.0	100.0	100.0	100.0	100.0	100.0	100.0	100.0	100.0
0*	4.7	5.6	6.4	14.6	9.6	31.5	15.9	4.1	7.7
1 – 9	1.7	1.7	1.7	2.1	2.0	2.5	2.9	2.1	2.4
10 – 39	26.1	25.7	26.8	27.1	29.6	25.5	31.4	27.7	34.1
40 & above	67.5	66.9	65.1	56.2	58.7	40.6	49.8	66.1	55.8

* has a job but not at work during the reference week


Note: Working age population considered as age 15 & over population

The Vision of DCS

To be the leader in the region in producing timely statistical information to achieve the country's development goals.

The Mission of DCS

Making contribution in the socio-economic development of the country by providing accurate timely statistics, more effectively by means of new technology, and utilising the services of dedicated staff under a strategic leadership to become a prosperous nation in the globalised environment.

 Department of Census & Statistics,
Sankyana Mandiraya
No. 306/71, Polduwa Road,
Battaramulla

 info@statistics.gov.lk
 +94 11 2147000
 +94 11 2147011
 statistics.gov.lk

This publication is produced by the Sample Survey Division
 7th floor, Department of Census and Statistics
 Sample.survey@statistics.gov.lk
 +94 112147458  +94 112147447